



ACTIVITIES AND ORGANIZATIONS

GE 11

CRIST



1924

The Beacon

Editor-in-Chief

W. LEONARD H. BENNETT, '24

Managing Editor

WILLIS J. SNOW, '25

Business Manager

OLIVER J. WORTHINGTON, '24

Contributing Editors

LEONA R. PECKHAM, '24

JAMES C. TWEDELL, '24

NEWS STAFF

Associate Board

EDWARD P. LAKE, '26, *Athletic*

GLADYS J. L. PECKHAM, '24, *Co-ed*

GRACE E. HARRIBINE, '24, *Feature*

DONALD R. KINZIE, '26, *Campus*

News Board

HELEN C. DREW, '24

GEORGE E. PARR, '26

EMERSON TOWER, '25

GEORGE E. PIERCE, '26

ERDENE GAGE, '25

RAYMOND LUFT, '26

STANLEY GILMORE, '26

HOPE DYER, '26

RAYMOND S. SUTCLIFFE, '25

WILLIAM H. FORD, '27

Business Department

Circulation Manager

EARLE SISWICK, '25

Advertising Manager

WILLIAM F. LUCKER, '25

Subscription Manager

EVERETT P. ARNOLD, '25

Business Staff

ARTHUR W. GROVER, '26

STANLEY C. BOUCHARD, '26

CARLO CIASULLO, JR., '26

G. PARKER LAWTON, '26

GRIST



1924

Rhode Island Club Roll

THOMAS KIRBY
LESLIE T. SMITH
WENDELL R. TURNER

President
Vice-President
Secretary-Treasurer

1924

WILLIAM H. BROWN
FRED N. CLARKE, JR.
GEORGE S. HASLAM
ROY W. HOWARD
THOMAS KIRBY
HENRY R. LITTLE
THOMAS MALIFF
ROY PERRY

MILTON P. STEERE
JAMES C. TWEDELL
JOHN V. TOWER
WENDELL R. TURNER
WALTER R. LITTLE
CHARLES S. NORTH
EARL S. EDWARDS
THOMAS W. SMITH

1925

ANDREW CHRISTENSEN
EDWARD J. COONEY
WILLIS B. GIFFORD
ALBERT E. MAKIN
RAYMOND C. NORTHUP
JAMES A. WRIGHT

ADONIS PATTERSON
WALTER SHEA
LESLIE T. SMITH
RAYMOND HUDSON
RAYMOND W. TURNER
JOSEPH W. PINTO

1926

CALVIN LAMONT
IRA D. MCINTOSH
EMERY H. HALL
CHESTER W. JENSEN

JAMES S. HASLAM
ROBERT B. STRONG
HARRY WILBOURN
GEORGE A. MACKENZIE

CLIFFORD K. BOSWORTH

The Athletic Association

- JAMES C. TWEDELL, '24. *President*
- THOMAS W. SMITH, '24 *Vice-President*
- CHARLES STEWART NORTH, '24 *Secretary*



The Engineering Society

- TIMOTHY E. GEARY, '23. *President*
- LUKE CLARKE, '24 *Vice-President*
- JOHN CRIMMINS, '24 *Secretary-Treasurer*



The Lecture Association

- VASLET L. HOWE, '23. *President*
- EVERETT P. ARNOLD, '25 *Vice-President*
- GLADYS J. L. PECKHAM, '24 *Secretary*
- HELEN E. PECK *Treasurer and Faculty Member*
- GEORGE V. MARSH. *Village Member*



Y. M. C. A.

- LUKE CLARKE, '24 *President*
- WILLIAM F. LUCKER, '25 *Secretary and Treasurer*

Through the organization the Sunday evening discussion groups were supervised.

It was also through the organization that two delegates, L. Edward Tilley and Everett Christopher, were sent to the International Conference held at Indianapolis.

G
L
E
E



C
L
U
B

Glee Club and Orchestra

1922-23

LUKE CLARKE, *Manager*
DR. JULES JORDAN, *Director*

GEORGE PARR, *Leader Glee Club*
KENNETH RILEY, *Leader Orchestra*

Quartet

THOMAS MALIFE JOHN NYE EVERETT CHRISTOPHER HARRY SEAMAN
MATHEW CHAPPELL, *Reader* GEORGE PIERCE, *Accompanist*
R. LITTLE and J. PIACIFELLI, *Guitar Soloists*

Concerts

Lippitt Hall, Kingston	January 5, 1923
Lafayette Village Improvement Association, Lafayette	February 2, 1923
American Legion, Wickford	May 16, 1923
Narragansett Pier Athletic Association, Narragansett Pier	May 17, 1923
High-Y Club, Newport	May 22, 1923
Lippitt Hall, Kingston	May 25, 1923

1923-24

LUKE CLARKE, *Manager*
DONALD KINZIE, *Asst. Manager*
DR. JULES JORDAN, *Director*

EVERETT CHRISTOPHER, *Leader Glee Club*
ROY HOWARD, *Leader Orchestra*
AMOS ROWELL, *Treasurer*

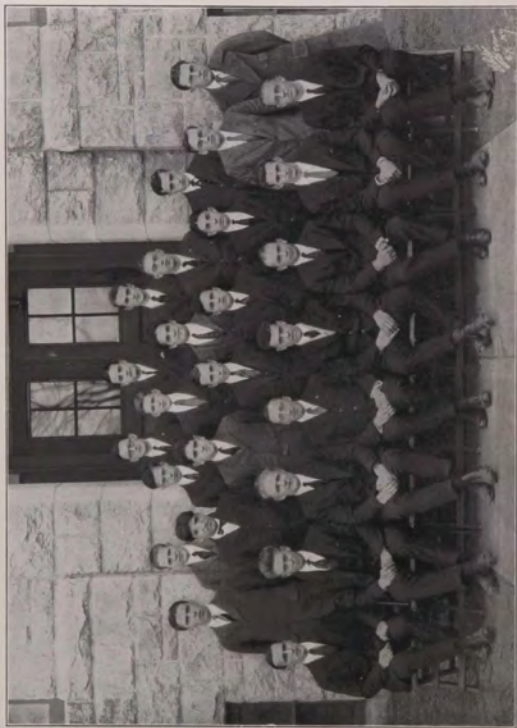
Quartet

ALBERT GAGE R. OSBORN EVERETT CHRISTOPHER DONALD KINZIE
MATHEW CHAPPELL, *Reader* R. LITTLE, *Guitar Soloist*
GEORGE PIERCE, *Accompanist* JOSEPH LAMB, *Impersonator*

Concerts

Richmond Parent-Teachers' Association, Hope Valley	January 18, 1924
Narragansett Pier Athletic Association, Wakefield	February 8, 1924
American Legion, Merrill Post No. 16, Westerly	February 12, 1924
West Warwick High School, Westcott	March 28, 1924

CRIST



1924

Campus Club

Officers

FARRAR LOOMIS LAMPREY, '24	<i>President</i>
CHARLES STEWART NORTH, '24	<i>Vice-President</i>
ARTHUR BAXTER MILLER, '25	<i>Secretary</i>
HENRY RAYMOND LITTLE, '24	<i>Treasurer</i>
DONALD BURCH BROWN, '25	<i>Sergeant-at-Arms</i>
JOHN EDWARDS HARVEY, JR., '26	<i>Membership Secretary</i>

Members

CHARLES NICKEL ALLAIRE, '26	EARLE KRAMER JOHNSON, '25
GEORGE JOSEPH ALLAIRE, '26	CARNIG PETER KACHIDOODRIAN, '25
JABEZ KENDALL BLACKEBY, '26	LEO HENRY LAFLEUR, '24
SIDNEY JAQUITH BRAGG, '26	WALTER BRADFORD LITTLE, '24
LESLIE GRANT BURLINGAME, '25	ALBERICO CRISPINO MANSOLILLO, '26
JOHN JOSEPH CALLANAN, '25	WILLIAM VICTOR McKECHNIE, '25
MATTHEW CHAPPELL, '24	ERLAND LAMBERT SANDBERG, '25
VINCENT PAUL CUMMINGS, '26	THEOBALD HERMAN SCHOELLER, '26
JOHN SHAW COOLIDGE, '25	WILLIAM FRANCIS SMITH, '24
HARRY THURSTON ELLSTROM, '26	FRANK REGER WARDEN, '25
WINSTON FINUCANE, '26	HAROLD COLVILLE WARDEN, '25
HENRY HOPKINS, '26	ALBERT EDWARD WORRALL, '26

WILLIAM HOWARTH, '26



Aggie Club

- | | |
|--------------------------|-----------------------|
| RAYMOND A. ELDREDGE, '23 | <i>President</i> |
| STEPHEN D. WHEELER, '24 | <i>Vice-President</i> |
| WILLIAM H. BROWN, '24 | <i>Treasurer</i> |
| FRED N. CLARKE, JR., '24 | <i>Secretary</i> |

The Agricultural Club at Rhode Island State College was founded in 1907. Meetings are held the first and third Wednesdays of each month, at which some faculty member or other foremost agriculturist delivers an address. It might be said that it is doing as much to boost Rhode Island State College as any department of the Institution. It holds an Annual Ball, the proceeds of which are spent in securing for the club meeting, speakers who are prominent in some phase of agriculture.

The club pays the expenses of the judging team to fairs in and out of the State. It is at these places that "Little Rhody" is heard from.

So popular has become the Annual Aggie Ball, that the faculty voted it should rank as one of the big dances of the year.

CRIST

STUDENT



COUNCIL

1924

Student Council

WILLIAM H. BROWN, '24	<i>President</i>
MILTON P. STEERE, '24	<i>Vice-President</i>
WILLIAM O. SCHATTLE, '24.	<i>Treasurer</i>
ESTHER E. FORT, '24	<i>Secretary</i>

COMMITTEES

Activities

THOMAS MALIFF, '24
 THOMAS J. KIRBY, '24
 GEORGE S. HASLAM, '24
 STELLA COHEN, '25
 FRANK J. SHIELDS, '25

Athletics

FARRAR LOOMIS LAMPREY, '24
 WILLIAM V. MCKECHNIE, '25
 W. LEONARD H. BENNETT, '24
 WILLIAM F. LUCKER, '25
 GEORGE T. GADDES, '25

Judiciary

WILLIAM H. BROWN, '24
 MILTON P. STEERS, '24
 CLINTON L. ARMSTRONG, '27
 CHESTER W. JENSEN, '26
 RAYMOND S. SUTCLIFFE, '25

College Development

THOMAS KIRBY, '24
 WILLIAM O. SCHATTLE, '24
 CHESTER W. JENSEN, '26
 FLORENCE A. MOONEY, '25
 ESTHER E. FORT, '24



Phi Delta

FRED N. CLARKE, JR., '24

President

ELVIM J. ANDREWS, '23

Vice-President

GRACE E. HARRIBINE, '24

Secretary

LUKE CLARKE, '24.

Treasurer

MISS HELEN E. PECK

Director and Coach

The purpose of Phi Delta is to promote talent in acting before the public, and create an interest in dramatics among the students at Rhode Island State College.

Membership is open to all students who have shown ability to act or who have done definite work for the production of a play.

This year Phi Delta is going to produce "The Dover Road", special arrangement having been made with Samuel French of New York. The play will be given during Junior Week.

Tau Kappa Alpha

GEORGE H. CRESSY	<i>President</i>
J. CLIFTON RICKETTS	<i>Secretary and Treasurer</i>

Members

GEORGE H. CRESSY, '24	MARK GIFFORD, '26
EHLER J. ERNST, '24	WILLIAM F. LUCKER, '25
J. CLIFTON RICKETTS, '24	PARKER C. LAWTON, '26
L. EDWARD TILLEY, '25	JOHN J. CALLANAN, '25
RAYMOND S. SUTCLIFFE, '25	OLIVER J. WORTHINGTON, '24

Debating Society

RAYMOND S. SUTCLIFFE, '25	<i>President</i>
WILLIAM F. LUCKER, '25	<i>Secretary and Treasurer</i>

The Debating Society has charge of the Freshman-Sophomore Debate and the intercollegiate debates.

Two intercollegiate debates have taken place to date:—
 R. I. S. C. versus Univ. of Maine at R. I. S. C., Feb. 14, 1923.
 Univ. of N. H. versus R. I. S. C. at N. H., Feb. 14, 1924.



Y. W. C. U.

Officers 1923-1924

<i>President</i>	GRACE HARRIBINE
<i>Vice-President</i>	HELEN BURDICK
<i>Secretary</i>	FLOSSIE E. BUXTON
<i>Treasurer</i>	R. ERDENE GAGE
<i>Publicity Chairman</i>	EVELYN BURDICK
<i>World Fellowship</i>	MARTHA O. SAYLES
<i>Social Committee</i>	VERA SWAN

The Young Women's Christian Union has been exceedingly active during 1923-1924. The able leader with her "staff" has done a great deal to make the organization a growing one. The weekly programs have been most interesting, and our social committee always has a surprise for us once a month. Our new bulletin board has created much attention! It bears so many good things worth knowing about. The Christmas Sale was indeed successful.

The "Y. M." on the campus has co-operated with us in having joint discussion groups, whereby the students may discuss world problems. They also gave us their support last spring with our Sunday evening song services "under the elms."

The association has many plans for the coming year. The greatest of these is to send as many delegates to Camp Maqua as possible.

Blanket Tax Committee

FRED N. CLARKE, '24
Football Manager

CHARLES BRADY, '24
Basketball Manager

HARRY R. SEAMAN, '23
Track Manager

WILLIAM H. BROWN, '24
Baseball Manager

OLIVER J. WORTHINGTON, '24
Beacon Representative

RAYMOND S. SUTCLIFFE, '25
Debating Society

LUKE CLARKE, '24
Glee Club Manager

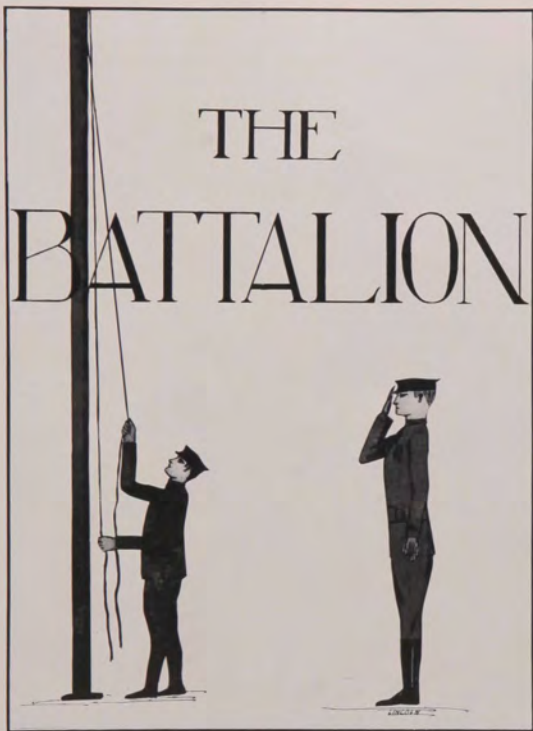
MISS ALICE L. EDWARDS
Lecture Association Representative

Faculty Members

PROF. TYLER
PROF. BARLOW

PROF. WALES
MR. KEANEY

THE BATTALION



GRIST



1924

The Battalion

Commandant

CLAUDE J. HAMMOND, CAPTAIN, INF., D. O. L.

Staff

JOSEPH CHURCH, CAPTAIN, INF., D. O. L.
JESSE M. PRIME, TECH. SERGEANT, D. E. M. L.
ELMER C. LINDSEY, SERGEANT, D. E. M. M.

Headquarters Detachment

Major

First Lieutenant (Adjutant)
First Lieutenant (Band Leader)
First Sergeant (Drum Major)
Color Sergeant
Band Sergeant
Band Corporal

HAROLD F. KERN
EVERETT P. ARNOLD
ROY W. HOWARD
GEORGE E. PARR
JAMES H. HASLAM
HARRY B. GRIFFITH
HENRY HOPKINS

Company A

Captain

First Sergeant

First Platoon

F. LOOMIS LAMPREY
WILLIAM O. SCHATTLE
NORMAN B. GRANT
WARREN D. NICHOLS

1st Lieut. (Plat. Comdr.)
Platoon Sergeant
Sgt. R. G. Ldr. 1st Sec.
Sgt. L. G. Ldr. 2nd Sec.

RALPH S. SHAW
WHARTON W. KRESGE

Second Platoon

JOHN H. SPOONER
RAYMOND N. BIRKEDAL
ERLAND L. SANDBERG
HARVEY W. GAY

Company B

Captain

First Sergeant

First Platoon

HARRY C. CHANDLER
CARRIG P. KACHIDOORIAN
WILLIAM V. MCKECHNIE
G. PARKER LAWTON

1st Lieut. (Plat. Comdr.)
Platoon Sergeant
Sgt. R. G. Ldr. 1st Sec.
Sgt. L. G. Ldr. 2nd Sec.

WILLIAM H. BROWN
CHARLES L. GLEDHILL

Second Platoon

ARTHUR J. SCHALLER
JOHN S. COOLIDGE
DONALD B. BROWN
HERBERT E. RADCLIFFE

Company C

Captain

First Sergeant

First Platoon

JOHN V. TOWER
WILLIAM F. SMITH
EMERSON TOWER
NORMAN W. SMITH

1st Lieut. (Plat. Comdr.)
Platoon Sergeant
Sgt. R. G. Ldr. 1st Sec.
Sgt. L. G. Ldr. 2nd Sec.

JAMES C. TWEDELL
HAROLD C. WARDEN

Second Platoon

EHLER J. ERNST
LEONARD B. HATHAWAY
MILTON H. BIDWELL
ALBERT E. ARNOLD



A FRESHMAN



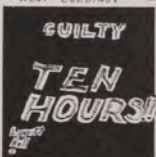
WENT COORDING.



WAS CAUGHT.



EAST HALL



AND SHOVELED COAL.



Wells House
The scene of Mary Patton



WEDS WROTE WITH THIS LINE



FRESHMEN INITIATION



The Freshmen Lost The Rope Pull, But

Won The Football Game.

gob