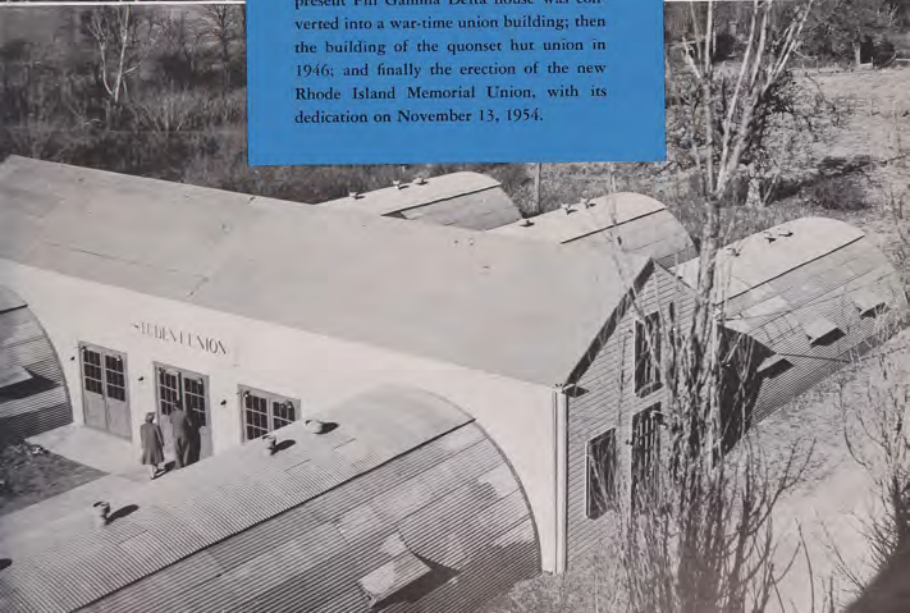


THE UNION STORY

The following few pages are dedicated to a progressive pictorial history of our Student Union — starting in 1943 when the present Phi Gamma Delta house was converted into a war-time union building; then the building of the quonset hut union in 1946; and finally the erection of the new Rhode Island Memorial Union, with its dedication on November 13, 1954.



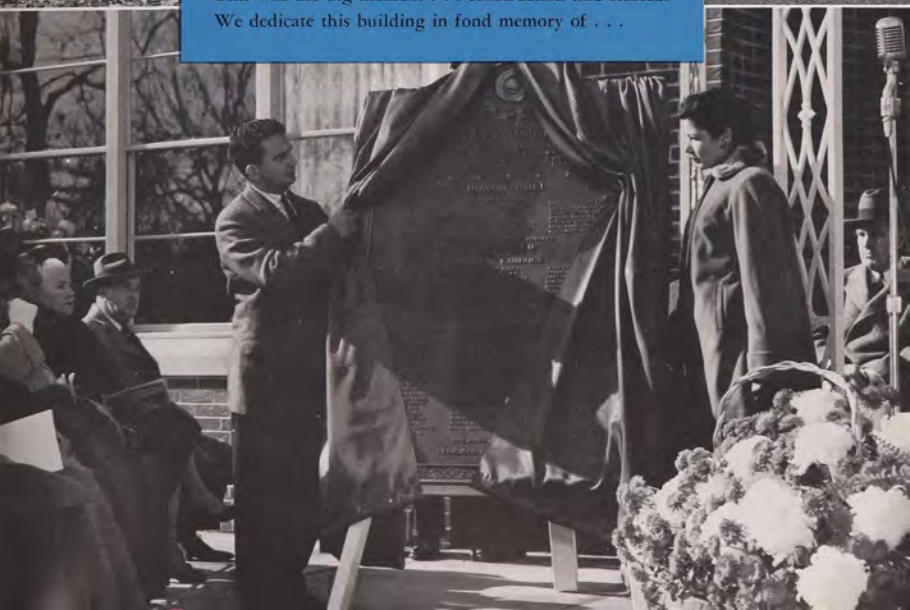


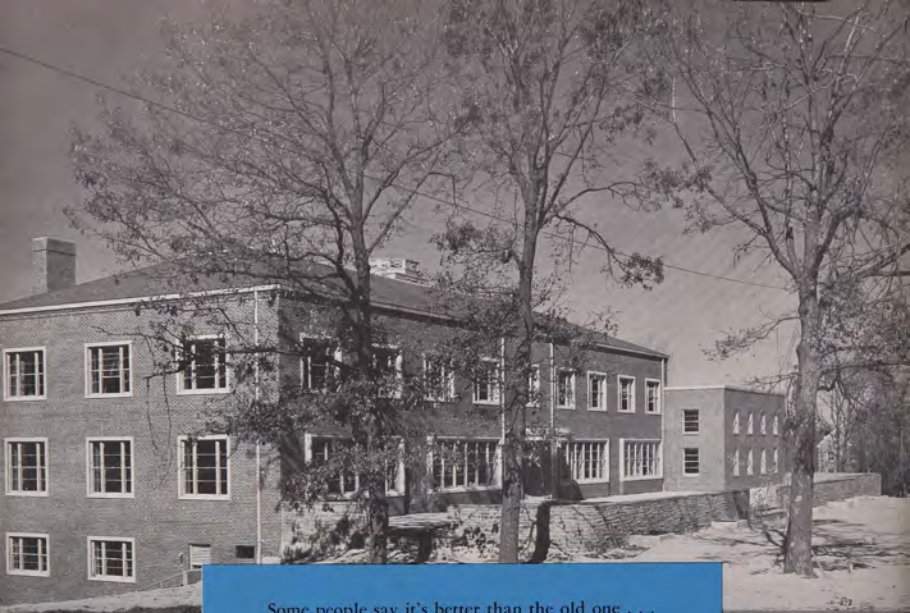
This was a luxury . . . then!
The wheels of progress begin to roll . . .





This was the big moment . . . construction had started!
We dedicate this building in fond memory of . . .



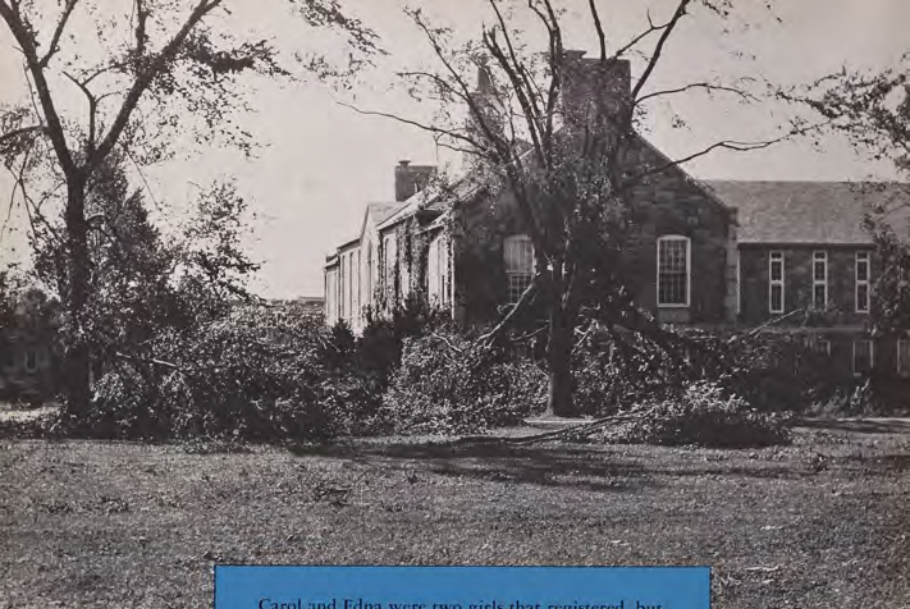


Some people say it's better than the old one . . .
This is a luxury . . . now!





An evening class in Union 34.



Carol and Edna were two girls that registered, but didn't stay around for Freshman Week.

