

## FACULTY



## THE CORPORATION OF RHODE ISLAND STATE COLLEGE

JAMES F. ROCKETT, *Director of Education*

FOOTNOTE:—" Under the proposed reorganization plan, which as yet has not passed the legislature, a board of regents will be appointed to take the place of the old board of managers. Until that time comes, the Director of Education is, and has been since his appointment, technically and legally the only one in whose hands the authority of the previous board of managers exists."



RAYMOND G. BRESSLER

**E**ACH year the opportunity given to the President of Rhode Island State College by the Editor of the *Grist* to say a final word to the Senior Class becomes a serious challenge. My message this time is best couched in the words of the immortal Tennyson:

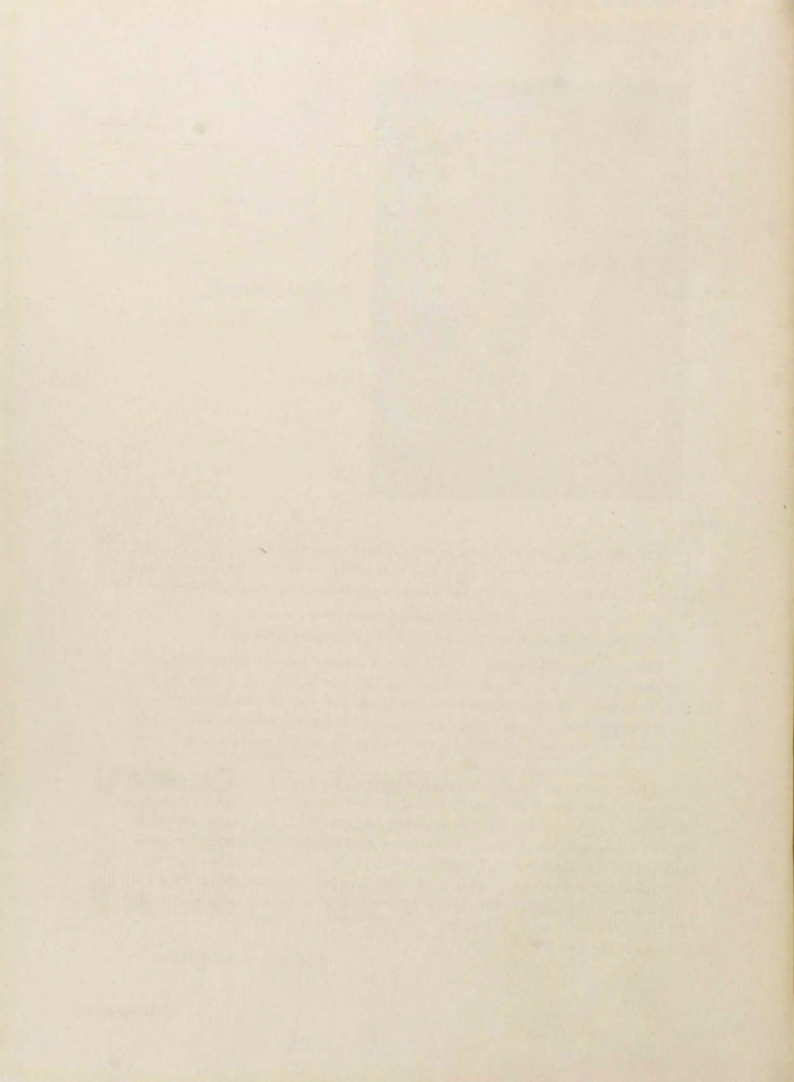
"Yet I doubt not thro' the ages one increasing purpose runs,  
And the thoughts of men are widen'd with the process of the suns."

This conviction in the inevitability of the growth of human nature is the conviction that you must maintain if you hope to accomplish the best in life. It is easy for one to be pessimistic. Particularly is this true of individuals of your age who have had incessantly drummed into your ears during the past three years that you were inheriting a pretty bad world, that the present generation has made a mess of it, and that on you rests the burden of lifting the world from its doldrums.

It is my feeling that you are inheriting nothing much worse than my generation inherited twenty-five years ago. It has been the way of age from time everlasting to tell youth that the present is rather bad and that only the young can improve it. Consider the attitude of the old woman and take heart: "The old today were the young yesterday. The young today will be the old tomorrow. Let us Pray!"

You are blessed with untold material benefits. You have conveniences that kings and Croesuses never dreamed of. And, best of all, you have all of these at prices available to the man of meager income. So keep your head high. If you don't get what you like, turn around and like what you get!

RAYMOND G. BRESSLER



SCHOOL OF AGRICULTURE AND HOME ECONOMICS



George E. Adams  
*Dean of Agriculture and  
Home Economics*  
B. S., M. Agr.



Basil E. Gilbert  
*Vice Dean and Director of Research*  
M. A., Ph. D.



Margaret Whittenore  
*Vice-Dean*  
B. S., A. M.



Theodore E. Olland  
B. S., M. S.



Homer O. Stuart  
B. S., M. S.



John E. Ladd  
B. S., M. S., A.



George H. Baldwin  
B. S.



Grace C. Whaley  
B. E.



William R. Gordon  
B. S.

SCHOOL OF AGRICULTURE AND HOME ECONOMICS



Arthur L. Walker  
B. S., M. S.



Laura E. Andrews  
B. S., M. A.



John B. Smith  
B. S., M. S.



Everett P. Christopher  
M. S., PH. D.



Howland Burdick  
B. S.



George B. Durham  
B. S., M. S.



Crawford P. Hart  
B. S., M. AGR.



Elisabeth Stillman  
B. S.



John P. Deleplane  
D. U. M., M. S.

## SCHOOL OF AGRICULTURE AND HOME ECONOMICS



Dorothy Gatton  
B. A., M. A.



Mary R. Scott  
B. S.

## DEPARTMENT OF MILITARY SCIENCE



Major Thomas W. Freeman



Captain Richard Sandusky



Captain Jasper E. Brady

Sergt. Jesse Prime

Sergt. August Friel

## SCHOOL OF ENGINEERING



Royal L. Wales  
*Dean of Engineering*  
B. S.



Marshall H. Tyler  
B. S., A. M.



Samuel H. Webster  
A. B., B. S.



William Anderson  
A. M., M. S.



Igor I. Sikorsky



C. Lester Coggins  
B. S.



Frank H. Bills  
B. S.



Ralph E. Brown  
B. E. E., S. M.



Carroll D. Billmyer  
B. S.



## SCHOOL OF ENGINEERING



Eison I. Schock  
B. S.



Nicholas Alexander  
M. S., D.



Frank F. Archibald



Donald E. Sterns  
B. S., M. S.



William J. Mobray



William D. Archibald



Maurice W. Ahnfeldt  
B. S.



Leon C. Breault  
B. S., M. S.



J. James Devine  
B. S.

SCHOOL OF SCIENCE AND BUSINESS ADMINISTRATION



John Barlow  
*Vice-President of College  
Dean of Science and Business*  
A. M., M. C. D.



Helen E. Peck  
*Dean of Women*  
B. A., A. M.



Frank W. Keaney  
*Director of Athletics*  
A. B.



John C. Woldin  
*Vice-Dean of Freshmen*  
M. S., Ph. D.



Herman Churchill  
A. B., A. M.



Joseph W. Ince  
A. B., A. M.



Harold W. Browning  
M. S., Ph. D.



Andrew J. Newman  
*Director of the Placement Service*  
M. A., Ph. D.



Philip E. Douglass  
A. B., Ph. D.

SCHOOL OF SCIENCE AND BUSINESS ADMINISTRATION



Victor H. Noll  
M. A., PH. D.



Frederick D. Tootell  
A. B.



Mabel D. Eldred  
B. S.



Herbert M. Emery  
B. S.



Wilbur G. Parks  
M. A., PH. D.



Charles J. Fish  
B. M., PH. D., PH. D.



Robert Rockafellow  
B. S., M. A.



George E. Brooks  
B. L. I., M. A.



Herbert M. Hofford  
PH. B.

SCHOOL OF SCIENCE AND BUSINESS ADMINISTRATION



Kenneth L. Knickerbocker  
M. A., Ph. D.



Mabel E. Dickson  
B. S., A. M.



George W. Phillips  
A. B.



Franz Karbaum



Elizabeth W. Christopher  
A. B., A. M.



Robert A. DeWolf  
B. S., M. S.



Kenneth E. Wright  
B. S., M. S.



Arthur A. Vernon  
M. S., Ph. D.



Ralph K. Carleton  
M. A., Ph. D.

SCHOOL OF SCIENCE AND BUSINESS ADMINISTRATION



Josephine L. Russell  
*Secretary to the President*  
B. S.



Frank L. Howard  
B. S., PH. D.



Lester E. Erwin  
B. S., M. S.



J. Richard Jones  
B. S., M. A.



Margaret M. Parks  
M. A., PH. D.



Lee C. McCauley  
B. P. S. M.



William M. H. Beck, Jr.  
PH. D.



Catherine N. Stearns  
B. S., M. A.



Leonard H. Russell  
B. S., M. S.

## SCHOOL OF SCIENCE AND BUSINESS ADMINISTRATION



Harry J. Prebluda  
B. S., M. S.



Helen E. Boardman



Harry S. McCready



Lucy I. Rawlings

## COLLEGE OFFICERS



William J. Whelan  
*Purchasing Agent*



Lucy C. Tucker  
*Registrar*



Margaret R. Van Ingen  
*Librarian*



Hortense Anderson  
*Assistant Librarian*



Hannah A. Birch  
*Curator of Libraries*

## EXPERIMENT STATION STAFF

RAYMOND G. BRESSLER	<i>President of the College, Ex-Officio Member</i>
GEORGE E. ADAMS	<i>Director</i>
BASIL E. GILBERT	<i>Director of Research and Plant Physiologist</i>
A. L. WALKER	<i>Agricultural Economist</i>
JOHN L. TENNANT	<i>Associate Agricultural Economist</i>
THEODORE E. ODLAND	<i>Agronomist</i>
FRED K. CRANDALL	<i>Assistant Agronomist</i>
H. F. A. NORTH	<i>Assistant Agronomist</i>
ANDREW E. STENE	<i>Pomologist</i>
EVERETT P. CHRISTOPHER	<i>Associate Pomologist</i>
JOHN B. SMITH	<i>Chemist</i>
FREDERICK R. PEMBER	<i>Associate Plant Physiologist</i>
LESTER E. ERWIN	<i>Assistant Plant Pathologist</i>
WALDO L. ADAMS	<i>Associate Chemist</i>
FRANK S. SCHLENKER	<i>Assistant Chemist</i>
DONALD R. WILLARD	<i>Assistant Chemist</i>
MARGARET WHITTEMORE	<i>Home Economist</i>
BLANCHE M. KUSCHKE	<i>Assistant Home Economist</i>
HOMER O. STUART	<i>Head, Animal Industry</i>
JOHN P. DELAPLANE	<i>Assistant Animal Industry</i>
CRAWFORD P. HART	<i>Assistant Animal Industry</i>
WILLIAM R. GORDON	<i>Sociologist</i>
KENNETH KRAUSCHIE	<i>Graduate Assistant</i>
ARNOLD S. KNOWLES	<i>Junior Assistant Chemist</i>
WILLIAM J. CHAMPLIN	<i>Field Assistant and Meteorologist</i>
RAYMOND P. REED	<i>Farm Foreman</i>
THOMAS C. HIGGINS	<i>Plant Foreman</i>
GEORGE GEE	<i>Greenhouse Assistant</i>
J. W. STANTON, JR.	<i>Laboratory Assistant</i>

## EXTENSION SERVICE PERSONNEL—R. I.

GEORGE E. ADAMS	<i>Director and State Leader of County Agent Work</i>
SARA E. COYNE	<i>State Leader of Home Demonstration Work</i>
LORENZO F. KINNEY, JR.	<i>State Leader of 4-H Club Work</i>

## FIELD STAFF

*Eastern Rhode Island District*

SUMNER D. HOLLIS	<i>County Agricultural Agent</i>
NETTIE H. SIMMONS	<i>County Home Demonstration Agent</i>
CARL B. GAREY	<i>County Club Agent</i>

