



Dr. Harold Browning  
*Dean, College of Arts and Sciences*



Dr. George Ballentine  
*Dean, College of Business Administration*



Miss Olga Brucher  
*Dean, College of Home Economics*

*DE*



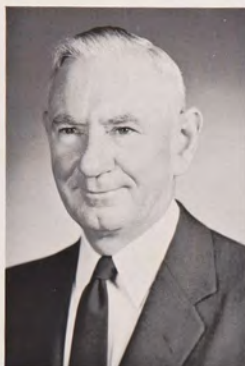
Dr. William Wiley  
*Dean, College of Agriculture*



Miss Evelyn Morris  
*Dean of Women*



Miss Martha Sayles  
*Director, School of Nursing*



Dr. Stephen Crawford  
*Dean, College of Engineering*



Mr. Henry Dux  
*Asst. Dean of Men*



Dr. John Quinn  
*Dean of Men*



Dr. Herber Youngken, Jr.  
*Dean, College of Pharmacy*

ANS



*CHILD DEVELOPMENT CENTER*

*HUTCHINSON HALL*



*ADMINISTRATION BUILDING*





*CHRIST THE KING CHURCH*



*WOODWARD HALL*

*WOMEN'S CAFETERIA*





*ENGINEERING BUILDING*

*STUDENTS APARTMENTS*



*ADAMS HALL*





*FACULTY APARTMENTS*



*CANTERBURY HOUSE*

*POTTER INFIRMARY*





*GENERAL CLASSROOM BUILDING*

*PECK HALL*

