

university of
rhode island

grist

1952



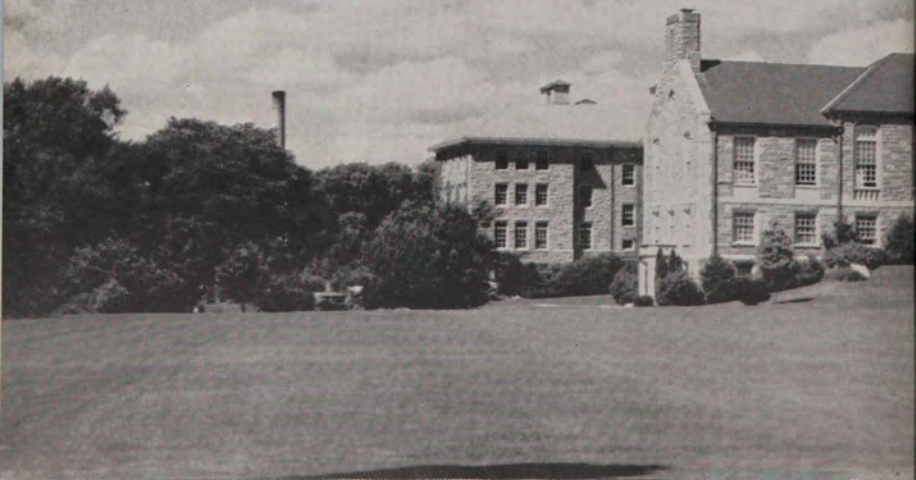


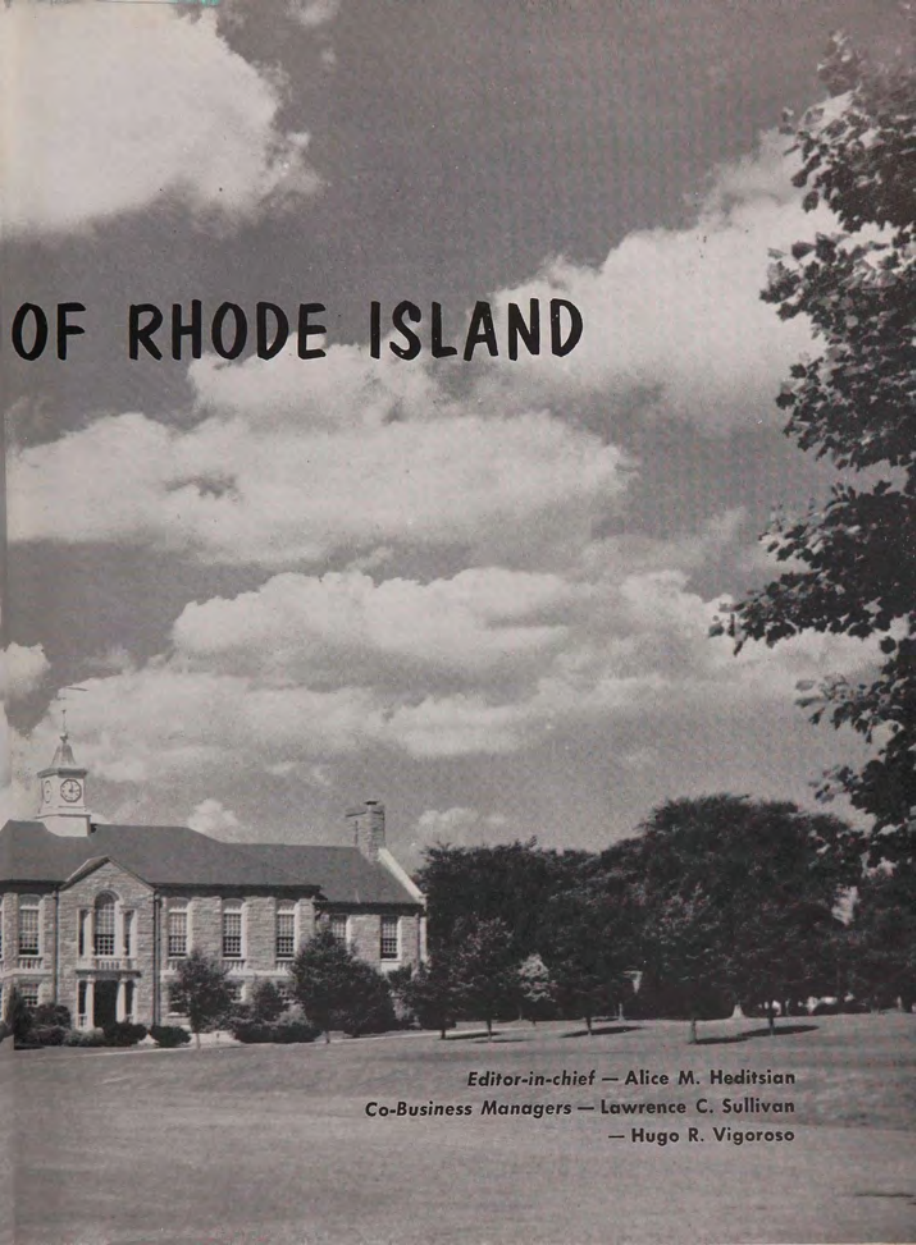


THE 1952

GRIST

UNIVERSITY





OF RHODE ISLAND

Editor-in-chief — Alice M. Heditsian
Co-Business Managers — Lawrence C. Sullivan
— Hugo R. Vigoroso

table of contents

President's Message	6
Board of Trustees	6
Executive Council	7
Grist Board	8
SENIOR SECTION	10
Class Advisor's Message	12
Senior Class Officers	12
COLLEGES	60
ACTIVITIES	70
Student Governing Associations	72
Honorary Societies	76
Social-Technical-Vocational	80
Arts	96
Spiritual	106
WOMEN'S RESIDENCE	110
MEN'S RESIDENCE	126
WOMEN'S ATHLETICS	146
MEN'S ATHLETICS	154
AND THEN THE BOOKS WERE PUT AWAY	176
ACKNOWLEDGMENTS	189
ADVERTISEMENTS	190
UNDERGRADUATE DIRECTORY	209

inter | action

We dream a dream and wonder if anyone else dreamed
the same dream . . .

We think a thought and look around for someone else who
has thought the same thought . . .

When we find him, we find a part of ourselves, someone
with whom to share ideas, someone to help answer our
questions . . . relieve our doubts.

We search for him when studies get us down . . . when fears
and worries wear us thin. We search for him when a new
revelation comes to us and we share it . . . giving of our-
selves . . . becoming more complete.

All we did was speak and a similar heart heard. Friendship
becomes more than the bummed cigarette or borrowed car.

All this just because we spoke . . . and shared the most
precious of all . . . our minds.

President's Message



Dr. and Mrs. Woodward in their living room.

To the Members of the Class of 1952:

College is sometimes regarded as a preparation for life. True, a college education, wisely ordered and seriously pursued, can be an important part of one's preparation for a career.

On the other hand, I prefer to think of college not simply as preparation for life, but as an important part of life itself. The student who reaps the greatest benefit from four years of college is not the one who enrolls with the sole objective of self-gain. He benefits most from college experience who seeks to give of himself as a responsible member of the university community, as a campus citizen, dedicating a share of his time and his effort to advance the best interests of the university.

The GRISTS as they appear from year to year are the annals which record the activities of our university community. These pages reflect the diversity of interests and of activities which together comprise student life on a typical American land-grant university campus. Peruse this volume and you will understand what I mean when I say that college is not only a preparation for life, but an important segment of life itself.

For sixty years your alma mater has been growing from small and humble beginnings to its present stature and vigor. You have had part in its development and during your undergraduate years you have seen it reach the status of a full-fledged university.

Here is the record of rich and rewarding years on this campus. You will treasure their memory as long as you live. These pages will always stand as reminders of a period in your life which gave you self-confidence, breadth of view, understanding of your fellow men, and faith in the future.

Faithfully yours,

Carl R. Woodward



Board of
Trustees

• Row 1: Mrs. C. Gordon MacLeod, A. B., Sara L. Kerr, M. Ed., Secretary. • Row 2: Henry J. Blais, Jr., LL. B., Vice Chairman, A. Livingston Kelly, A. B., Chairman, Francis I. McCanna LL. M., Michael F. Walsh, Ed. D.
• Absent: R. A. De Bucci, B. S.



• JOHN CHILCOTE WELDIN, Dean of Administration and Registrar • OLGA PAULINE BRUCHER, Dean and Professor of Home Economics • JOHN F. QUINN, Dean of Men • MASON HERBERT CAMPBELL, Dean of the College of Agriculture, Director of Agricultural Experimental Station • CARL RAYMOND WOODWARD, President of the University • WILLIAM IITER, Faculty Representative of the College of Arts and Sciences • ARLENE TILTON, Faculty Representative of the College of Home Economics • EVELYN BELLE MORRIS, Dean of Women • THOMAS STEPHEN CRAWFORD, Dean of College of Engineering, Director of Engineering Experimental Station, and Professor of Chemical Engineering • GEORGE ANDREW BALLENTINE, Dean of the College of Business Administration • HAROLD WILLIAM BROWNING, Vice President of the University and Dean of College of Arts and Sciences.

The Executive Council

The 1952 GRIST BOARD



well trim our whiskers . . .

we did it, we finally finished the book! Don't think we didn't have our apprehensions. How many weeks was it that we slept restlessly, dreaming of bad copy, lost photos, trying to match names to unfamiliar group pictures, and actually seeing visions of selling apples to pay off our creditors?

After pawing through fashionable magazines for interesting layouts and planning scented quilted covers for the girls and tobacco pouch covers for the boys, we were foiled by a good realistic talk with our printer, engraver, cover maker, photographer and business managers, and quietly, ears down, we put our expensive, eccentric ideas in the circular file . . . But, as Coach Kopp said, "Here I am", and here we are.



The brain trust



The trust fund

Editor-In-Chief: Alice M. Heditsian

Business Managers: Hugo R. Vigoroso

Lawrence C. Sullivan



● Row 1: M. Chamberlain, D. Atkinson, L. Sullivan, A. Heditsian, E. Nelson, W. Anthony, P. Wilkey.
● Row 2: S. Schmuger, N. Ludman, G. Miles, R. Hawes, J. Tabor, A. Trembly, N. Santaniello, D. Noyes.
● Row 3: G. Rogosto, B. Johnson, G. Rogers, A. Avedesian, J. Pickup, J. Kenyon, P. Emerson.

MANAGING EDITOR

Eric Nelson

ASSISTANT MANAGING EDITOR

Avedis Avedesian

PHOTOGRAPHY EDITOR

Joan Blease

Robert Linne, Asst. Ed.
Sally Davenport, Asst. Ed.
Robert Black
Gloria Rogosto
Grace Miles
Clarence Moore
Patricia Heath
Warren Anthony

ART EDITOR

Paulene Wilkey

Anthony Pitacelli
Betty Johnson
Avedis Avedesian
Margaret Emerson
Catherine Brody

FEATURES EDITOR

Milton Chamberlain

Burton Hoffman
John Smith
Isabelle Goddard
Betty Proctor
Lillian Newman
James Cooper
Ruth Benson
Joan Cavanaugh
Barbara Wise
Velma Kennedy
Selma Schmuger

COPY EDITOR

Doris Atkinson

Jacquelyn Kenyon
Barbara Johnson
Marjorie Kent
Marjorie Dinwoodie
Doris Noyes

WOMEN'S RESIDENCE EDITOR

Joan Blease

Bette Cannon
James Cooper
Doris Noyes
House Representatives

MEN'S RESIDENCE EDITOR

Jeffery Tabor

James Cooper
Paul Howland
Edwin Roche
House Representatives

WOMEN'S SPORTS EDITOR

Norma Ludman

Joy Blackman
Martha Freeman
Joyce Giblin
Patricia Heath
Jeanne Moran
Ruth Rutledge
Lois Salk
Doreene Schwartz
Gloria Siegel

MEN'S SPORTS EDITOR

Richard Hawes

John Cawley
Theodora Bloom
David Sugarman
Burton Hoffman

CLUBS EDITOR

Ann Trembly

Rita Handler
Selma Schmuger
Barbara Amber
Nancy Hodgson
John Pickup

BUSINESS STAFF

ADVERTISING MANAGER

Shirley Mangini

CIRCULATION MANAGER

Robert Wilson

John Schmid
Holmes Lomas
John Baxter
Reginald Gadrow
Madelyn Geisser
Betty Ann Ludenslager

FACULTY ADVISOR

John F. Quinn