

2018

Cellulose Microfibril Structure: Inspirations from Plant Diversity

Alison Roberts

University of Rhode Island, aroberts@uri.edu

Creative Commons License



This work is licensed under a [Creative Commons Attribution 3.0 License](https://creativecommons.org/licenses/by/3.0/).

Follow this and additional works at: https://digitalcommons.uri.edu/bio_facpubs

Citation/Publisher Attribution

Roberts, A.W. Cellulose Microfibril structure: Inspirations from Plant Diversity (2018) *IOP Conference Series: Earth and Environmental Science*, 130(1), art. no. 012001. DOI: 10.1088/1755-1315/130/1/012001

This Article is brought to you for free and open access by the Biological Sciences at DigitalCommons@URI. It has been accepted for inclusion in Biological Sciences Faculty Publications by an authorized administrator of DigitalCommons@URI. For more information, please contact digitalcommons@etal.uri.edu.

PAPER • OPEN ACCESS

Cellulose microfibril structure: inspirations from plant diversity

To cite this article: A W Roberts 2018 *IOP Conf. Ser.: Earth Environ. Sci.* **130** 012001

View the [article online](#) for updates and enhancements.

Related content

- [Possibilities of Using Cellulose Fibres in Building Materials](#)
V Hospodarova, N Stevulova and A Sicakova
- [Direct and indirect impacts of climatic change on species diversity and genetic diversity](#)
Tetsukazu Yahara, M Donoghue and A Hendry
- [Stochastic Hype-Resonance Caused by Coupling for a Globally Coupled Linear System](#)
Li Jing-Hui



IOP | ebooks™

Bringing you innovative digital publishing with leading voices to create your essential collection of books in STEM research.

Start exploring the collection - download the first chapter of every title for free.

Cellulose microfibril structure: inspirations from plant diversity

A W Roberts

Department of Biological Sciences, University of Rhode Island, 120 Flagg Road, Kingston RI 02881 USA

Email: aroberts@uri.edu

Abstract. Cellulose microfibrils are synthesized at the plasma membrane by cellulose synthase catalytic subunits that associate to form cellulose synthesis complexes. Variation in the organization of these complexes underlies the variation in cellulose microfibril structure among diverse organisms. However, little is known about how the catalytic subunits interact to form complexes with different morphologies. We are using an evolutionary approach to investigate the roles of different catalytic subunit isoforms in organisms that have rosette-type cellulose synthesis complexes.

1. Diversity in cellulose microfibril structure and biosynthesis

Cellulose is an important component of many commercial products and a carbon-neutral energy source. It is produced by diverse organisms in the form of microfibrils, which consist of bundles of 1,4- β -glucan chains stabilized by inter-chain hydrogen bonds. These microfibrils are synthesized by cellulose synthase catalytic subunits that associate in the plasma membrane to form Cellulose Synthesis Complexes (CSC). The number and arrangement of catalytic subunits varies among different taxa, and this variation in CSC organization has been correlated with variation in cellulose microfibril structure [1]. For example, linear CSCs in bacteria [2], brown algae [3], dinoflagellates [4], and red algae [5, 6] produce ribbon-like cellulose microfibrils. In some chlorophycean green algae, large CSCs produce microfibrils containing more than 100 glucan chains [7]. The CSCs of land plant and their close charophycean green algal relative are hexagonal structures known as rosettes [8], which contain 18 catalytic subunits and therefore produce cellulose microfibrils consisting of 18 glucan chains [9]. These rosette CSCs are composed of specialized cellulose synthases designated CESAs [10, 11] and it has been proposed that domains unique to CESAs participate in CSC assembly [12]. The CESAs diversified early in the evolution of the seed plant lineage to form a medium-sized family whose members are functionally-specialized [13]. Although nearly all commercial cellulose is derived from organisms that have CESAs and rosette CSCs, we know little about the evolutionary origin of CESA proteins or the selective pressures that drove their functional specialization.



2. CESAs functional specialization in Arabidopsis

The specialized functions of the ten members of the Arabidopsis CESA family have been well characterized. First, it has been shown that different CESAs are responsible for primary and secondary cell wall deposition. Specifically, the cellulose microfibrils in secondary cell walls are synthesized by AtCESA4, -7 and -8 [14] and those in the primary cell walls are synthesized by AtCESA1, -3, and members of the 6-like group [15, 16]. However, promoter swap experiments have shown that at least some primary AtCESAs can substitute for secondary AtCESAs and vice versa, i.e. *AtCESA3pro::AtCESA7* partially rescues *atcesa3* and *AtCESA8pro::AtCESA1* partially rescues *atcesa8* [17]. This is consistent with a role for sub-functionalization in the evolution of seed plant CESAs. A role for neo-functionalization is reflected in the shared phenotype of *atcesa4*, *atcesa7*, and *atcesa8* null mutants [18] and the inability to complement these mutants by expressing one of the other secondary AtCESAs with the promoter for the missing isoform [19]. This, combined with similar studies of the primary AtCESAs [15, 16], suggests a requirement for three functionally distinct, non-interchangeable CESA isoforms for both primary and secondary cell wall biosynthesis. In addition, there is some functional redundancy among the 6-like members of the AtCESA family, AtCESA2, -5, -6 and -9 [16].

3. *Physcomitrella patens* as a model for investigating CESA and CSC evolution

Physcomitrella patens represents the mosses, a lineage of non-vascular plants that diverged from the seed plant lineage over 440 million years ago [20]. The life cycle of *P. patens* [21] includes a haploid phase consisting of a system of protonemal filaments and leafy gametophores (Fig. 1), and a diploid phase that consists of short-stalked sporangia. Although true vascular tissue is lacking, the leaf midribs of *P. patens* contain supportive stereid cells with thick secondary cell walls and thin-walled hydroids that function in transport [22]. The ability to make targeted changes in the *P. patens* genome by homologous recombination [23] along with a sequenced genome [24, 25] has led to the extensive use of this organism to study the evolution of developmental mechanisms in plants [26, 27].

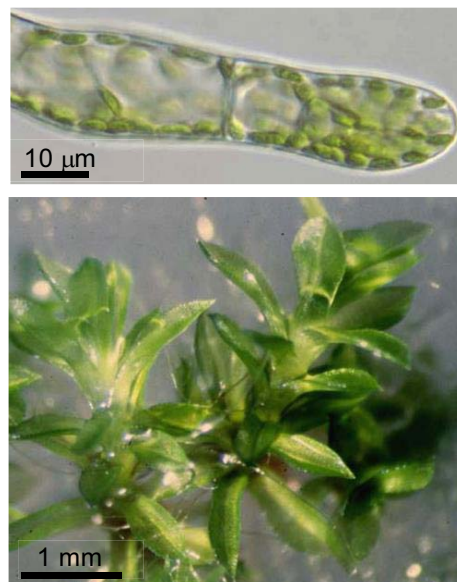


Figure 1. Protonemal filament (top) and leafy gametophores (bottom) of *P. patens*.

Like other land plants, *P. patens* has rosette CSCs [9, 28]. The genome of *P. patens* contains seven *CESA* genes and phylogenetic analysis has shown that the moss and seed plant *CESA* families evolved independently from a single common ancestral gene [19, 29-31]. Thus, the diversification and functional specialization of *CESAs* followed independent paths in the two lineages [28]. We have investigated *CESA* functional specialization in *P. patens* using a targeted gene knockout approach in an effort to better understand the selective pressures that drove the evolution of *CESA* families.

4. *CESA* functional specialization in *P. patens*

Knock out of individual *PpCESAs* revealed that *PpCESA5* is the only family member with an obvious single-knockout morphological phenotype. The *ppcesa5KO* lines are distinguished by their inability to produce leafy gametophores (Fig. 2). Gametophore buds develop normally through the 4-cell stage, but these cells expand and divide abnormally, producing irregular cell clumps instead of an organized leaf-generating meristem [32]. The defects in cell division and cell expansion are consistent with a role for *PpCESA5* in biosynthesis of the primary cell wall.



Figure 2. Phenotype of *ppcesa5KO* with irregular clumps of tissue (arrows, left), in place of wild type leafy gametophores (right).

The production of double knockouts revealed phenotypes for *ppcesa3/8KO*, *ppcesa6/7KO* and *ppcesa4/10KO*. In *ppcesa3/8KO* and *ppcesa6/7KO* lines, the leaf midribs showed reduced birefringence and staining with the cellulose binding dye Pontamine Fast Scarlet 4B (S4B; Fig. 3), consistent with cellulose deficiency [33]. Labeling of sections with the carbohydrate binding module 3A indicated that the secondary cell walls of the stereid cells in the leaf midribs were cellulose deficient [33]. Quantitative analysis of S4B fluorescence revealed a slight deficiency in midrib cellulose deposition in *ppcesa8KO*. However, the *ppcesa3KO*s were indistinguishable from the wild type, indicating that *PpCESA3* and *PpCESA8* are partially redundant. The *ppcesa3/8KO* phenotype could not be rescued by expressing *PpCESA6*, *PpCESA7*, *PpCESA4* or *PpCESA10* under control of the *PpCESA8* promoter, indicating that the evolutionary history of the *PpCESA* family included neofunctionalization. However, we were able to rescue the *ppcesa3/8KO* by expressing *PpCESA5* under control of the *PpCESA8* promoter. This indicates that evolution of the *PpCESA* family also involved subfunctionalization. The *ppcesa4/10KO* lines have defects in protonemal growth (unpublished) and are currently being investigated.

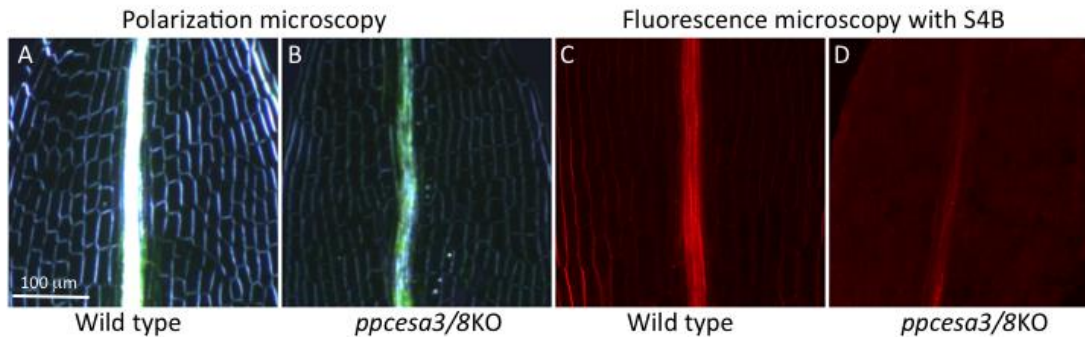


Figure 3. Polarization and fluorescence microscopy of leaves from wild type and *ppcesa3/8KO* *P. patens* showing cellulose deficiency in midribs.

5. Conclusion

Phylogenetic analysis has confirmed that the *CESA* families of seed plants and mosses diversified independently from a single common ancestor [19, 29-31]. However, there are similarities in functional specialization of the *PpCESA* and *AtCESA* families that are attributable to convergent evolution. First, the *CESAs* that deposit secondary cell walls (*PpCESA3*, -6 and -7) and primary cell walls (*PpCESA5*) are functionally differentiated [32, 33]. Second, subfunctionalization has occurred as indicated by the ability of *PpCESA5*, which is normally functions in primary cell wall deposition, to rescue the *ppcesa3/8KO* secondary cell wall phenotype when expressed with the *PpCESA8* promoter. Third, neofunctionalization is indicated by the shared phenotype of *ppcesa3/8KO* and *ppcesa6/7KO* and the inability of *PpCESA8pro::PpCESA7* to complement the *ppcesa3/8KO* phenotype. We are currently investigating whether the secondary *PpCESAs* physically interact to form a CSC. Finally, there is some functional redundancy in the *PpCESA* family since a strong secondary cell wall phenotype is observed only when *PpCESA3* and -8 or *PpCESA6* and -7 are knocked out together [33].

Acknowledgment

Work reviewed here was supported by the National Science Foundation under Award IOS-1257047 and the Center for LignoCellulose Structure and Formation, an Energy Frontier Research Center funded by the U.S. Department of Energy, Office of Science, Office of Basic Energy Sciences under Award DE-SC0001090.

References

- [1] Tsekos I (1999) The sites of cellulose synthesis in algae: Diversity and evolution of cellulose-synthesizing enzyme complexes *J Phycol* **35** 635-55
- [2] Brown R M, Jr., Willison J H M and Richardson C L (1976) Cellulose biosynthesis in *Acetobacter xylinum*: Visualization of the site of synthesis and direct measurement of the *in vivo* process *Proc. Natl. Acad. Sci. USA* **73** 4565-9
- [3] Peng H B and Jaffe L F (1976) Cell-wall formation in *Pelvetia* embryos. A freeze-fracture study *Planta* **133** 57-71
- [4] Sekida S, Horiguchi T and Okuda K (2004) Development of thecal plates and pellicle in the dinoflagellate *Scrippsiella hexapraecingula* (Peridinales, Dinophyceae) elucidated

- by changes in stainability of the associated membranes *European Journal of Phycology* **39** 105-14
- [5] Tsekos I and Reiss H-D (1992) Occurrence of the putative microfibril-synthesizing complexes (linear terminal complexes) in the plasma membrane of the epiphytic marine red alga *Erythrocladia subintegra* Rosenv. *Protoplasma* **169** 57-67
- [6] Tsekos I, Reiss H D and Schnepf E (1993) Cell-wall structure and supramolecular organization of the plasma membrane of marine red algae visualized by freeze-fracture *Acta Botanica Neerlandica* **92** 119-32
- [7] Itoh T (1990) Cellulose synthesizing complexes in some giant marine algae *J. Cell Sci.* **95** 309-19
- [8] Mueller S C and Brown R M, Jr. (1980) Evidence for an intramembrane component associated with a cellulose microfibril-synthesizing complex in higher plants *J Cell Biol* **84** 315-26
- [9] Nixon B T, Mansouri K, Singh A, Du J, Davis J K, Lee J G, Slabaugh E, Vandavasi V G, O'Neill H, Roberts E M, Roberts A W, Yingling Y G and Haigler C H (2016) Comparative structural and computational analysis supports eighteen cellulose synthases in the plant cellulose synthesis complex *Sci Rep* **6** 28696
- [10] Pear J R, Kawagoe Y, Schreckengost W E, Delmer D P and Stalker D M (1996) Higher plants contain homologs of the bacterial *celA* genes encoding the catalytic subunit of cellulose synthase *Proc Natl Acad Sci U S A* **93** 12637-42
- [11] Kimura S, Laosinchai W, Itoh T, Cui X, Linder C R and Brown R M, Jr. (1999) Immunogold labeling of rosette terminal cellulose-synthesizing complexes in the vascular plant *Vigna angularis* *Plant Cell* **11** 2075-85
- [12] Delmer D P (1999) Cellulose biosynthesis: Exciting times for a difficult field of study *Annu Rev Plant Physiol Plant Mol Biol* **50** 245-76
- [13] Somerville C (2006) Cellulose synthesis in higher plants *Annu Rev Cell Dev Biol* **22** 53-78
- [14] Taylor N G, Howells R M, Huttly A K, Vickers K and Turner S R (2003) Interactions among three distinct CesA proteins essential for cellulose synthesis *Proc Natl Acad Sci U S A* **100** 1450-5
- [15] Desprez T, Juraniec M, Crowell E F, Jouy H, Pochylova Z, Parcy F, Hofte H, Gonneau M and Vernhettes S (2007) Organization of cellulose synthase complexes involved in primary cell wall synthesis in *Arabidopsis thaliana* *Proc Natl Acad Sci U S A* **104** 15572-7
- [16] Persson S, Paredes A, Carroll A, Palsdottir H, Doblin M, Poindexter P, Khitrov N, Auer M and Somerville C R (2007) Genetic evidence for three unique components in primary cell-wall cellulose synthase complexes in *Arabidopsis* *Proc Natl Acad Sci U S A* **104** 15566-71
- [17] Carroll A, Mansoori N, Li S, Lei L, Vernhettes S, Visser R G, Somerville C, Gu Y and Trindade L M (2012) Complexes with mixed primary and secondary cellulose synthases are functional in *Arabidopsis* plants *Plant Physiol* **160** 726-37
- [18] Taylor N G, Laurie S and Turner S R (2000) Multiple cellulose synthase catalytic subunits are required for cellulose synthesis in *Arabidopsis* *Plant Cell* **12** 2529-39

- [19] Kumar M, Atanassov I and Turner S (2016) Functional analysis of cellulose synthase CESA protein class-specificity *Plant Physiol* **173** 970-83
- [20] Pires N D and Dolan L (2012) Morphological evolution in land plants: new designs with old genes *Philos Trans R Soc Lond B Biol Sci* **367** 508-18
- [21] Cove D J and Knight C D (1993) The moss *Physcomitrella patens*, a model system with potential for the study of plant reproduction *Plant Cell* **5** 1483-8
- [22] Xu B, Ohtani M, Yamaguchi M, Toyooka K, Wakazaki M, Sato M, Kubo M, Nakano Y, Sano R, Hiwatashi Y, Murata T, Kurata T, Yoneda A, Kato K, Hasebe M and Demura T (2014) Contribution of NAC transcription factors to plant adaptation to land *Science* **343** 1505-8
- [23] Schaefer D G and Zryd J P (1997) Efficient gene targeting in the moss *Physcomitrella patens* *Plant J* **11** 1195-206
- [24] Zimmer A D, Lang D, Buchta K, Rombauts S, Nishiyama T, Hasebe M, Van de Peer Y, Rensing S A and Reski R (2013) Reannotation and extended community resources for the genome of the non-seed plant *Physcomitrella patens* provide insights into the evolution of plant gene structures and functions *BMC Genomics* **14** 498
- [25] Rensing S A, Lang D, Zimmer A D, Terry A, Salamov A, Shapiro H, Nishiyama T, Perroud P F, Lindquist E A, Kamisugi Y, Tanahashi T, Sakakibara K, Fujita T, Oishi K, Shin I T, Kuroki Y, Toyoda A, Suzuki Y, Hashimoto S, Yamaguchi K, Sugano S, Kohara Y, Fujiyama A, Anterola A, Aoki S, Ashton N, Barbazuk W B, Barker E, Bennetzen J L, Blankenship R, Cho S H, Dutcher S K, Estelle M, Fawcett J A, Gundlach H, Hanada K, Heyl A, Hicks K A, Hughes J, Lohr M, Mayer K, Melkozernov A, Murata T, Nelson D R, Pils B, Prigge M, Reiss B, Renner T, Rombauts S, Rushton P J, Sanderfoot A, Schween G, Shiu S H, Stueber K, Theodoulou F L, Tu H, Van de Peer Y, Verrier P J, Waters E, Wood A, Yang L, Cove D, Cuming A C, Hasebe M, Lucas S, Mishler B D, Reski R, Grigoriev I V, Quatrano R S and Boore J L (2008) The *Physcomitrella* genome reveals evolutionary insights into the conquest of land by plants *Science* **319** 64-9
- [26] Cove D, Benzanilla M, Harries P and Quatrano R (2006) Mosses as model systems for the study of metabolism and development *Annu Rev Plant Biol* **57** 497-520
- [27] Prigge M J and Bezanilla M (2010) Evolutionary crossroads in developmental biology: *Physcomitrella patens* *Development* **137** 3535-43
- [28] Roberts A W, Roberts E M and Haigler C H (2012) Moss cell walls: structure and biosynthesis *Front Plant Sci* **3** 166
- [29] Roberts A W and Bushoven J T (2007) The cellulose synthase (*CESA*) gene superfamily of the moss *Physcomitrella patens* *Plant Mol Biol* **63** 207-19
- [30] Yin Y, Huang J and Xu Y (2009) The cellulose synthase superfamily in fully sequenced plants and algae *BMC Plant Biol* **9** 99
- [31] Harholt J, Sørensen I, Fangel J, Roberts A, Willats W G T, Scheller H V, Petersen B L, Banks J A and Ulvskov P (2012) The glycosyltransferase repertoire of the spikemoss *Selaginella moellendorffii* and a comparative study of its cell wall *PLoS One* **7** e35846
- [32] Goss C A, Brockmann D J, Bushoven J T and Roberts A W (2012) A *CELLULOSE SYNTHASE* (*CESA*) gene essential for gametophore morphogenesis in the moss *Physcomitrella patens* *Planta* **235** 1355-67

- [33] Norris J H, Li X, Huang S, Van de Meene A M L, Tran M L, Killeavy E, Chaves A M, Mallon B, Mercure D, Tan H-T, Burton R A, Doblin M S, Kim S H and Roberts A W (2017) Functional specialization of cellulose synthase isoforms in a moss shows parallels with seed plants *Plant Physiol* **175** 210-22