

2018

## Division of Research and Economic Development Monthly Report for April 2018

URI Division of Research and Economic Development

Follow this and additional works at: [https://digitalcommons.uri.edu/researchecondev\\_reports](https://digitalcommons.uri.edu/researchecondev_reports)

---

### Recommended Citation

URI Division of Research and Economic Development, "Division of Research and Economic Development Monthly Report for April 2018" (2018). *Reports (Research and Economic Development)*. Paper 114.  
[https://digitalcommons.uri.edu/researchecondev\\_reports/114](https://digitalcommons.uri.edu/researchecondev_reports/114)

This Periodical is brought to you by the University of Rhode Island. It has been accepted for inclusion in Reports (Research and Economic Development) by an authorized administrator of DigitalCommons@URI. For more information, please contact [digitalcommons-group@uri.edu](mailto:digitalcommons-group@uri.edu). For permission to reuse copyrighted content, contact the author directly.

THE  
UNIVERSITY  
OF RHODE ISLAND

Division of Research and Economic Development

# April FY18 Monthly Awards Report

THINK BIG  WE DO™



Table 1. FY18 Awards through the Division of Research and Economic Development including awards through URIRF as of April FY18

Month	FY14				FY15			
	Number		Amount Awarded		Number		Amount Awarded	
	Count	Cum. Ct.	Amount	Cum. Amt.	Count	Cum. Ct.	Amount	Cum. Amt.
July	39	39	\$4,139,716.95	\$4,139,716.95	56	56	\$9,320,986.14	\$9,320,986.14
August	50	89	\$10,961,168.50	\$15,100,885.45	44	100	\$12,358,916.05	\$21,679,902.19
September	44	133	\$13,495,443.00	\$28,596,328.45	54	154	\$9,752,946.59	\$31,432,848.78
October	30	163	\$4,306,251.98	\$32,902,580.43	40	194	\$10,524,688.48	\$41,957,537.26
November	16	179	\$3,117,236.86	\$36,019,817.29	33	227	\$4,659,283.60	\$46,616,820.86
December	29	208	\$2,366,159.91	\$38,385,977.20	23	250	\$4,928,269.75	\$51,545,090.61
January	30	238	\$3,780,011.56	\$42,165,988.76	22	272	\$2,793,419.35	\$54,338,509.96
February	30	268	\$2,076,599.68	\$44,242,588.44	32	304	\$3,760,154.75	\$58,098,664.71
March	29	297	\$4,062,350.95	\$48,304,939.39	26	330	\$4,144,522.17	\$62,243,186.88
April	28	325	\$4,427,811.05	\$52,732,750.44	33	363	\$10,761,617.18	\$73,004,804.06
May	37	362	\$3,839,315.32	\$56,572,065.76	33	396	\$5,594,823.50	\$78,599,627.56
June	34	396	\$12,209,552.37	\$68,781,618.13	30	426	\$5,826,873.64	\$84,426,501.20
<b>Total</b>	<b>396</b>	<b>396</b>	<b>\$68,781,618.13</b>	<b>\$68,781,618.13</b>	<b>426</b>	<b>426</b>	<b>\$84,426,501.20</b>	<b>\$84,426,501.20</b>

Month	FY16				FY17				FY18			
	Number		Amount Awarded		Number		Amount Awarded		Number		Amount Awarded	
	Count	Cum. Ct.	Amount	Cum. Amt.	Count	Cum. Ct.	Amount	Cum. Amt.	Count	Cum. Ct.	Amount	Cum. Amt.
July	37	37	\$8,259,292.12	\$8,259,292.12	37	37	\$4,339,118.27	\$4,339,118.27	46	46	\$8,177,016.53	\$8,177,016.53
August	50	87	\$11,559,380.86	\$19,818,672.98	57	94	\$8,539,822.58	\$12,878,940.85	52	98	\$7,651,420.00	\$15,828,436.53
September	47	134	\$15,419,750.42	\$35,238,423.40	32	126	\$4,627,289.24	\$17,506,230.09	43	141	\$11,976,231.67	\$27,804,668.20
October	29	163	\$5,505,924.11	\$40,744,347.51	44	170	\$10,495,024.28	\$28,001,254.37	62	203	\$9,245,698.88	\$37,050,367.08
November	20	183	\$1,782,290.00	\$42,526,637.51	29	199	\$1,964,267.24	\$29,965,521.61	19	222	\$5,861,135.05	\$42,911,502.13
December	23	206	\$5,157,323.68	\$47,683,961.19	21	220	\$2,559,332.00	\$32,524,853.61	31	253	\$4,528,216.61	\$47,439,718.74
January	18	224	\$2,301,715.00	\$49,985,676.19	28	248	\$4,267,124.83	\$36,791,978.44	34	287	\$6,785,649.61	\$54,225,368.35
February	36	260	\$7,503,614.82	\$57,489,291.01	33	281	\$5,870,893.25	\$42,662,871.69	25	312	\$3,433,279.00	\$57,658,647.35
March	28	288	\$3,653,643.41	\$61,142,934.42	37	318	\$5,531,665.34	\$48,194,537.03	31	343	\$8,048,833.96	\$65,707,481.31
April	30	318	\$7,850,054.40	\$68,992,988.82	19	337	\$7,231,667.00	\$55,426,204.03	27	370	\$7,317,376.27	\$73,024,857.58
May	38	356	\$8,421,608.95	\$77,414,597.77	33	370	\$3,555,246.01	\$58,981,450.04				
June	37	393	\$8,166,192.24	\$85,580,790.01	62	432	\$13,550,894.81	\$72,532,344.85				
<b>Total</b>	<b>393</b>	<b>393</b>	<b>\$85,580,790.01</b>	<b>\$85,580,790.01</b>	<b>432</b>	<b>432</b>	<b>\$72,532,344.85</b>	<b>\$72,532,344.85</b>	<b>370</b>	<b>370</b>	<b>\$73,024,857.58</b>	<b>\$73,024,857.58</b>

Fig 1a. FY18 Cumulative totals of numbers of awards through the Division of Research & Economic Development including awards through URIRF as of April FY18

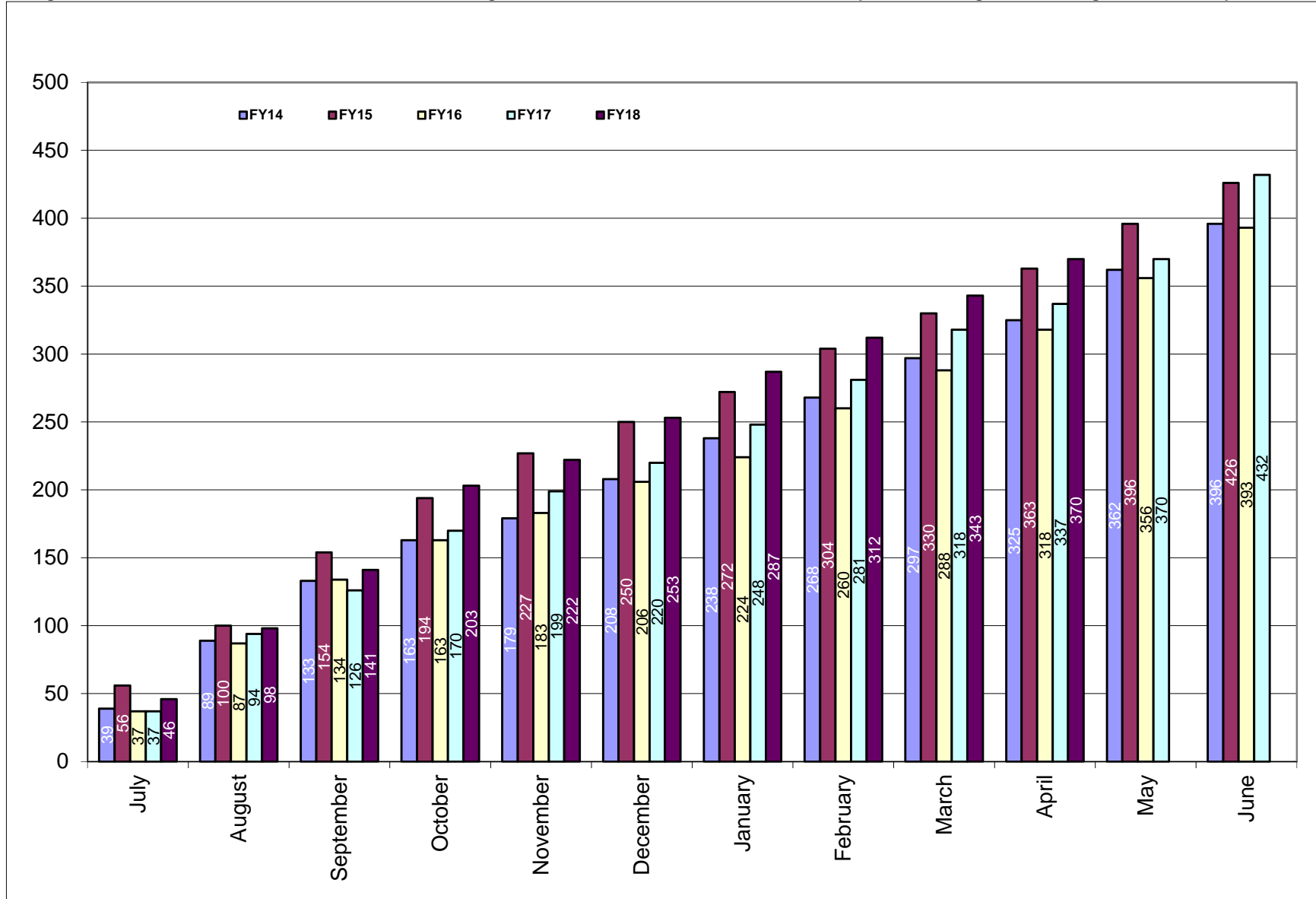
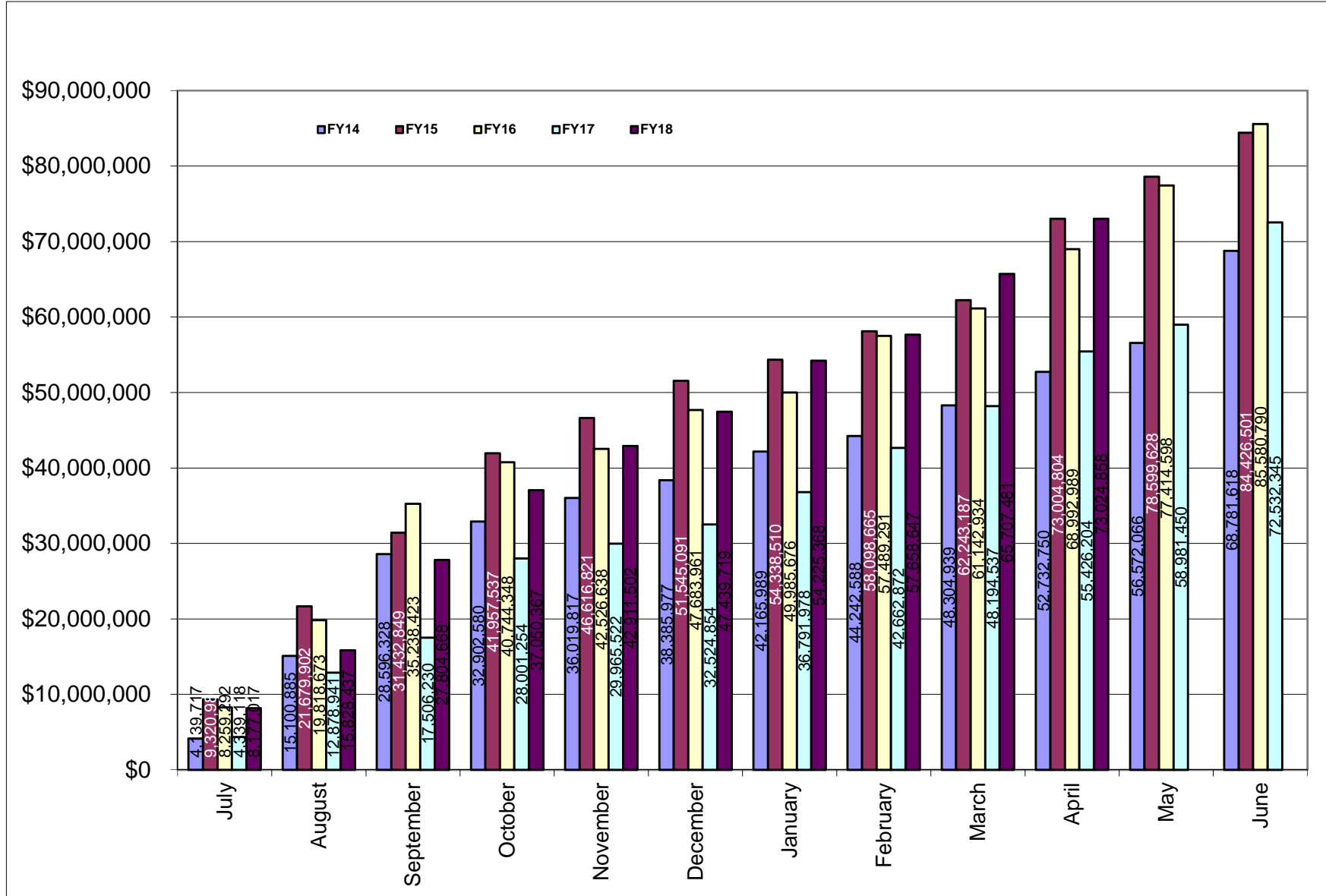


Fig 1b. Cumulative totals of awards received through the Division of Research & Economic Development including awards through URIRF as of April FY18



**Table 2. Summary of awards received by administrative and academic units FY14 through April FY18 YTD**

<b>Administrative</b>	<b><u>FY14</u></b>	<b><u>FY15</u></b>	<b><u>FY16</u></b>	<b><u>FY17</u></b>	<b><u>FY18</u></b>	<b><u>Totals</u></b>
PRESIDENT'S OFFICE	\$0.00	\$0.00	\$0.00	\$0.00	\$0.00	\$0.00
PROVOST	\$66,522.90	\$333,665.52	\$347,327.90	\$0.00	\$0.00	\$747,516.32
VP, ADMINISTRATION	\$934,258.37	\$12,176.00	\$0.00	\$24,923.00	\$0.00	\$971,357.37
VP, RESEARCH & ECON DEV	\$4,177,835.54	\$5,781,973.31	\$5,019,163.69	\$4,130,075.00	\$3,221,091.00	\$22,330,138.54
VP, STUDENT AFFAIRS	\$261,091.70	\$267,287.19	\$124,215.60	\$0.00	\$0.00	\$652,594.49
<b>Academic</b>						
ARTS & SCIENCES	\$4,245,460.88	\$6,966,881.21	\$5,807,093.79	\$4,796,076.54	\$3,045,615.82	\$24,861,128.24
BUSINESS ADMINISTRATION	\$72,332.00	\$255,549.40	\$367,079.80	\$0.00	\$50,000.00	\$744,961.20
COLLEGE OF EDU & PROF STUDIES	\$2,077,426.92	\$1,832,419.00	\$2,191,844.01	\$415,936.50	\$739,220.44	
CONTINUING EDUCATION	\$199,568.70	\$148,136.04	\$118,215.60	NA	\$0.00	\$465,920.34
ENGINEERING	\$3,487,206.08	\$6,367,872.33	\$8,940,566.89	\$4,693,118.34	\$11,618,524.95	\$35,107,288.59
ENVIRONMENT & LIFE SCIENCES	\$16,144,544.99	\$19,928,754.89	\$16,957,974.00	\$12,246,360.67	\$14,972,981.02	\$80,250,615.57
GRADUATE SCHOOL	\$0.00	\$0.00	\$0.00	\$0.00	\$0.00	\$0.00
HUMAN SCIENCE & SERVICES	\$899,862.05	\$858,426.62	\$1,147,091.45	NA	\$0.00	\$2,905,380.12
HEALTH SCIENCES	\$4,771,423.00	\$4,989,606.93	\$4,915,700.32	\$4,961,859.39	\$4,153,545.39	\$23,792,135.03
ACADEMIC HEALTH COLLABORATIVE				\$1,408,568.66	\$1,445,600.67	\$2,854,169.33
NURSING	\$1,298,944.60	\$682,403.25	\$1,807,216.30	\$1,512,030.27	\$153,644.56	\$5,454,238.98
OCEANOGRAPHY	\$22,981,661.90	\$25,356,628.31	\$31,099,397.41	\$30,870,365.04	\$25,049,228.88	\$135,357,281.54
PHARMACY	\$6,963,909.80	\$10,644,721.20	\$6,549,687.65	\$6,356,777.70	\$6,048,236.85	\$36,563,333.20
UNIVERSITY COLLEGE	\$199,568.70	\$0.00	\$188,215.60	\$0.00	\$0.00	\$387,784.30
UNIVERSITY LIBRARY				\$1,116,253.68	\$2,527,168.00	\$3,643,421.68
<b>Totals</b>	<b>\$68,781,618.13</b>	<b>\$84,426,501.20</b>	<b>\$85,580,790.01</b>	<b>\$72,532,344.79</b>	<b>\$73,024,857.58</b>	<b>\$377,089,264.84</b>

NA - NOT APPLICABLE (Unit does not exist)

CANCER PREV RESEARCH CTR - Prior to FY17 was reported in Arts and Sciences

CENTER FOR HUMAN SERVICES - Prior to FY17 was reported in Human Science and Services

EDUCATION - Prior to FY17 was reported in Human Science and Services

HUMAN DEV/COUNSEL/FAM STUDIES - Prior to FY17 was reported in Human Science and Services

NUTRITION AND FOOD SCIENCES - Prior to FY17 was reported in Environment and Life Sciences

PHYSICAL THERAPY - Prior to FY17 was reported in Human Science and Services

PSYCHOLOGY - Prior to FY17 was reported in Arts and Sciences

**Table 2a. Awards received by departments within colleges FY14 through April FY18 YTD**

<u>College</u>	<u>FY14</u>	<u>FY15</u>	<u>FY16</u>	<u>FY17</u>	<u>FY18 YTD</u>	<u>Totals</u>
<b>Arts and Sciences</b>	<b>\$4,245,460.88</b>	<b>\$6,966,881.21</b>	<b>\$5,807,093.79</b>	<b>\$4,796,076.54</b>	<b>\$3,045,615.82</b>	<b>\$24,861,128.24</b>
ARCHEOLOGY AND APPLIED HISTORY	\$0.00	\$4,898.00	\$0.00	\$0.00	\$0.00	\$4,898.00
ART	\$0.00	\$0.00	\$0.00	\$0.00	\$0.00	\$0.00
CHEMISTRY	\$1,860,329.55	\$4,959,626.45	\$3,407,452.84	\$2,369,873.50	\$1,703,699.00	\$14,300,981.34
COMMUNICATION STUDIES	\$0.00	\$0.00	\$0.00	\$69,146.00	\$0.00	\$69,146.00
COMPUTER SCIENCE/STATISTICS	\$159,245.55	\$50,250.00	\$826,544.98	\$491,657.00	\$113,820.72	\$1,641,518.25
DEAN'S OFFICE	\$22,302.98	\$23,478.36	\$24,924.04	\$0.00	\$0.00	\$70,705.38
ECONOMICS	\$0.00	\$6,250.00	\$0.00	\$0.00	\$0.00	\$6,250.00
ENGLISH		\$475,980.00	\$0.00	\$25,000.00	\$0.00	\$500,980.00
FEINSTEIN HUNGER CTR(DEAN'S OFFICE)	\$797,488.00	\$555,216.00	\$570,233.00	\$555,216.00	\$0.00	\$2,478,153.00
HISTORY	\$248,515.00	\$60,480.00	\$1,982.00	\$211,921.00	\$0.00	\$522,898.00
INTERNATIONAL ENGINEERING PROG	\$0.00	\$0.00	\$0.00	\$0.00	\$0.00	\$0.00
LANGUAGES	\$419,870.00	\$377,995.80	\$15,000.00	\$761,273.04	\$742,350.00	\$2,316,488.84
LIBRARY AND INFORMATION STUDIES	\$50,000.00	\$0.00	\$0.00	\$0.00	\$0.00	\$50,000.00
MATHEMATICS	\$108,832.55	\$0.00	\$0.00	\$0.00	\$32,648.20	\$141,480.75
PHILOSOPHY				\$2,000.00	\$0.00	\$2,000.00
PHYSICS	\$504,034.50	\$219,162.00	\$237,748.00	\$217,875.00	\$21,788.00	\$1,200,607.50
POLITICAL SCIENCE		\$162,083.60	\$517,787.30	\$31,502.00	\$289,844.90	\$1,001,217.80
SOCIOLOGY/ANTHROPOLOGY	\$30,118.75	\$0.00	\$110,426.00	\$50,613.00	\$141,465.00	\$332,622.75
THEATRE	\$0.00	\$0.00	\$0.00	\$0.00	\$0.00	\$0.00
GENDER AND WOMEN'S STUDIES	\$0.00	\$0.00	\$0.00	\$0.00	\$0.00	\$0.00
WRITING AND RHETORIC	\$44,724.00	\$71,461.00	\$94,995.63	\$10,000.00	\$0.00	\$221,180.63
<b>Business Administration</b>	<b>\$72,332.00</b>	<b>\$255,549.40</b>	<b>\$367,079.80</b>	<b>\$0.00</b>	<b>\$50,000.00</b>	<b>\$744,961.20</b>
ACCOUNTING	\$0.00	\$0.00	\$0.00	\$0.00	\$0.00	\$0.00
DEAN'S OFFICE	\$0.00	\$234,712.00	\$331,719.40	\$0.00	\$50,000.00	\$616,431.40
FACULTY - INSTRUCTION	\$72,332.00	\$20,837.40	\$35,360.40	\$0.00	\$0.00	\$128,529.80
MANAGEMENT	\$0.00	\$0.00	\$0.00	\$0.00	\$0.00	\$0.00

<u>College</u>	<u>FY14</u>	<u>FY15</u>	<u>FY16</u>	<u>FY17</u>	<u>FY18 YTD</u>	<u>Totals</u>
<b>College of Education &amp; Prof. Studies</b>	<b>\$2,077,426.92</b>	<b>\$1,832,419.00</b>	<b>\$2,191,844.01</b>	<b>\$415,936.50</b>	<b>\$739,220.44</b>	<b>\$7,256,846.87</b>
BIOTECH MANUFACTURING PVD COHORT					\$74,384.00	\$74,384.00
CENTER FOR HUMAN SERVICES	\$524,558.00	\$237,256.00	\$237,256.00	\$237,256.00	\$0.00	\$1,236,326.00
CEPS STRATEGIC INITIATIVES					\$237,256.00	
EDUCATION	\$1,552,868.92	\$1,595,163.00	\$1,954,588.01	\$178,680.50	\$427,580.44	\$5,708,880.87
<b>Engineering</b>	<b>\$3,487,206.08</b>	<b>\$6,367,872.33</b>	<b>\$8,940,566.89</b>	<b>\$4,693,118.34</b>	<b>\$11,618,524.95</b>	<b>\$35,107,288.59</b>
CHEMICAL ENGINEERING	\$1,017,782.78	\$1,147,777.99	\$638,045.12	\$532,058.37	\$4,372,526.86	\$7,708,191.12
CIVIL/ENVIRONMENTAL ENGINEERING	\$679,694.60	\$358,795.80	\$626,548.76	\$612,973.05	\$575,192.60	\$2,853,204.81
DEAN'S OFFICE	\$107,273.00	\$65,999.00	\$319,912.80	\$64,876.00	\$286,064.00	\$844,124.80
ELECTRICAL ENGINEERING	\$221,001.00	\$2,903,823.72	\$3,390,875.31	\$737,022.59	\$3,962,262.70	\$11,214,985.32
ENGINEERING COMPUTER CTR	\$42,572.00	\$0.00	\$0.00	\$0.00	\$0.00	\$42,572.00
INTERNATIOANAL ENG PROGRAM		\$17,692.80	\$15,000.00	\$25,000.00	\$0.00	\$57,692.80
MECHANICAL & INDUSTRIAL SYS EGR	\$350,143.00	\$586,746.91	\$1,993,862.41	\$1,103,170.00	\$585,060.38	\$4,618,982.70
OCEAN ENGINEERING	\$1,068,739.70	\$1,287,036.11	\$1,956,322.49	\$1,618,018.33	\$1,837,418.41	\$7,767,535.04
<b>Environment and Life Sciences</b>	<b>\$16,144,544.99</b>	<b>\$19,928,754.89</b>	<b>\$16,957,974.00</b>	<b>\$12,246,360.67</b>	<b>\$14,972,981.02</b>	<b>\$80,250,615.57</b>
BIOLOGICAL SCIENCES	\$1,205,548.39	\$409,221.00	\$253,638.00	\$330,500.00	\$0.00	\$2,198,907.39
CELL AND MOLECULAR BIOLOGY	\$7,148,772.86	\$430,581.00	\$0.00	\$60,697.00	\$60,697.00	\$7,700,747.86
CELLS ACADEMIC UNIT 1		\$2,817,060.20	\$4,150,538.11	\$2,509,767.82	\$1,347,770.49	\$10,825,136.62
CELLS ACADEMIC UNIT 2		\$3,661,919.60	\$4,189,228.41	\$2,933,492.89	\$5,073,345.76	\$15,857,986.66
CELLS ACADEMIC UNIT 3	\$8,000.00	\$5,610,346.18	\$5,712,508.68	\$4,422,068.04	\$5,043,484.80	\$20,796,407.70
CELLS DEAN / ADMINISTRATION				\$28,112.00	\$2,028,284.00	\$2,056,396.00
COMMUNITY PLANNING/AREA DEVEL	\$0.00	\$0.00	\$0.00	\$0.00	\$0.00	\$0.00
COOPERATIVE EXTENSION	\$303,615.00	\$117,786.70	\$8,250.00	\$0.00	\$0.00	\$429,651.70
DEAN'S OFFICE	\$1,671,668.43	\$802,988.20	\$1,639,130.50	\$1,785,936.00	\$0.00	\$5,899,723.13
ENV & NAT RESOURCE ECONOMICS	\$780,131.00	\$570,754.00	\$335,567.20	\$0.00	\$340,632.40	\$2,027,084.60
FISHERIES, ANIMAL & VET SCIENCE	\$958,878.97	\$569,213.69	\$176,211.10	\$83,288.92	\$791,434.57	\$2,579,027.25
GEOSCIENCES	\$566,452.87	\$1,116,544.24	\$113,544.00	\$88,898.00	\$0.00	\$1,885,439.11
MARINE AFFAIRS	\$3,837.00	\$0.00	\$0.00	\$0.00	\$0.00	\$3,837.00



NATURAL RESOURCES SCIENCE	\$3,014,274.22	\$3,753,730.08	\$354,263.00	\$3,600.00	\$170,000.00	\$7,295,867.30
PLANT SCIENCE	\$483,366.25	\$68,610.00	\$25,095.00	\$0.00	\$117,332.00	\$694,403.25

<u>College</u>	<u>FY14</u>	<u>FY15</u>	<u>FY16</u>	<u>FY17</u>	<u>FY18 YTD</u>	<u>Totals</u>
<b>Graduate School</b>	<b>\$0.00</b>	<b>\$0.00</b>	<b>\$0.00</b>	<b>\$0.00</b>	<b>\$0.00</b>	<b>\$0.00</b>
<b>Human Science and Services</b>	<b>\$632,784.95</b>	<b>\$320,639.22</b>	<b>\$41,750.00</b>	<b>NA*</b>	<b>NA*</b>	<b>\$995,174.17</b>
COMMUNICATIVE DISORDERS	\$0.00	\$0.00	\$24,250.00			\$24,250.00
DEAN'S OFFICE	\$588,623.00	\$319,709.00	\$0.00			\$908,332.00
KINGSTON CHILD DEVELOPMENT CTR	\$7,162.95	\$930.22	\$0.00			\$8,093.17
TEXTILES/FASHION MERCHAND/DESIGN	\$36,999.00	\$0.00	\$17,500.00			\$54,499.00
<b>College of Health Sciences</b>	<b>\$5,038,500.10</b>	<b>\$5,527,394.33</b>	<b>\$6,021,041.77</b>	<b>\$4,961,859.39</b>	<b>\$4,153,545.39</b>	<b>\$25,702,340.98</b>
CANCER PREV RESEARCH CTR	\$1,236,062.50	\$2,284,271.90	\$3,030,564.52	\$1,668,136.64	\$663,207.93	\$8,882,243.49
GERONTOLOGY	\$267,077.10	\$537,787.40	\$1,100,341.45	\$550,451.85	\$0.00	\$2,455,657.80
HUMAN DEV/COUNSEL/FAM STUDIES	\$116,886.00	\$109,355.00	\$226,093.95	\$117,292.45	\$96,345.00	\$665,972.40
KINESIOLOGY	\$0.00	\$0.00	\$5,000.00	\$3,000.00	\$0.00	\$8,000.00
NUTRITION AND FOOD SCIENCES	\$2,847,405.50	\$2,132,969.00	\$334,417.00	\$1,663,532.00	\$2,252,359.53	\$9,230,683.03
PHYSICAL THERAPY	\$341,442.00	\$87,892.00	\$840,254.65	\$540,230.45	\$716,118.00	\$2,525,937.10
PSYCHOLOGY	\$229,627.00	\$375,119.03	\$484,370.20	\$419,216.00	\$425,514.93	\$1,933,847.16
<b>ACADEMIC HEALTH COLLABORATIVE</b>				<b>\$1,408,568.66</b>	<b>\$1,445,600.67</b>	<b>\$2,854,169.33</b>
IIHI ADMINISTRATION				\$1,408,568.66	\$1,445,600.67	\$2,854,169.33
<b>Nursing</b>	<b>\$1,298,944.60</b>	<b>\$682,403.25</b>	<b>\$1,807,216.30</b>	<b>\$1,512,030.27</b>	<b>\$153,644.56</b>	<b>\$5,454,238.98</b>

<b>Oceanography</b>	<b>\$22,981,661.90</b>	<b>\$25,356,628.31</b>	<b>\$31,099,397.41</b>	<b>\$30,870,365.04</b>	<b>\$25,049,228.88</b>	<b>\$135,357,281.54</b>
---------------------	------------------------	------------------------	------------------------	------------------------	------------------------	-------------------------

<b>Pharmacy</b>	<b>\$6,963,909.80</b>	<b>\$10,644,721.20</b>	<b>\$6,549,687.65</b>	<b>\$6,356,777.70</b>	<b>\$6,048,236.85</b>	<b>\$36,363,333.20</b>
BIOMEDICAL & PHARMACEUTICAL SCI	\$5,544,086.00	\$6,272,151.75	\$5,773,671.13	\$5,728,968.10	\$5,554,285.08	\$28,873,162.06
CRIME LAB	\$33,092.00	\$30,770.75	\$14,333.75	\$31,094.25	\$24,374.75	\$133,665.50
DEAN'S OFFICE	\$0.00	\$0.00	\$0.00	\$0.00	\$0.00	\$0.00
ELDERLY MEDICATION	\$0.00	\$0.00	\$0.00	\$0.00	\$0.00	\$0.00
LIVING RITE/HEALTH POLICY	\$811,359.00	\$2,988,425.40	\$0.00	\$0.00	\$0.00	\$3,799,784.40
PHARMACY PRACTICE	\$575,372.80	\$1,353,373.30	\$761,682.77	\$596,715.35	\$269,577.02	\$3,556,721.24
RYAN INSTITUTE NEUROSCIENCE					\$200,000.00	\$200,000.00

<u>College</u>	<u>FY14</u>	<u>FY15</u>	<u>FY16</u>	<u>FY17</u>	<u>FY18 YTD</u>	<u>Totals</u>
<b>University College</b>	<b>\$199,568.70</b>	<b>\$0.00</b>	<b>\$188,215.60</b>	<b>\$0.00</b>	<b>\$0.00</b>	<b>\$387,784.30</b>

<u>College</u>	<u>FY14</u>	<u>FY15</u>	<u>FY16</u>	<u>FY17</u>	<u>FY18 YTD</u>	<u>Totals</u>
<b>University Library</b>	<b>\$0.00</b>	<b>\$0.00</b>	<b>\$0.00</b>	<b>\$1,116,253.68</b>	<b>\$2,527,168.00</b>	<b>\$3,643,421.68</b>
DATASPARK				\$1,116,253.68	\$2,527,168.00	\$3,643,421.68

NA - NOT APPLICABLE (Unit does not exist)

CANCER PREV RESEARCH CTR - Prior to FY17 was reported in Arts and Sciences

CENTER FOR HUMAN SERVICES - Prior to FY17 was reported in Human Science and Services

EDUCATION - Prior to FY17 was reported in Human Science and Services

GERONTOLOGY - Prior to FY17 was reported in Human Science and Services

HUMAN DEV/COUNSEL/FAM STUDIES - Prior to FY17 was reported in Human Science and Services

NUTRITION AND FOOD SCIENCES - Prior to FY17 was reported in Environment and Life Sciences

PHYSICAL THERAPY - Prior to FY17 was reported in Human Science and Services

PSYCHOLOGY - Prior to FY17 was reported in Arts and Sciences

**Table 2b. Awards received by units within administrative divisions FY14 through April FY18 YTD**

<u>Administrative Unit</u>	<u>FY14</u>	<u>FY15</u>	<u>FY16</u>	<u>FY17</u>	<u>FY18 YTD</u>	<u>Totals</u>
<b>President's Office</b>	<b>\$0.00</b>	<b>\$0.00</b>	<b>\$0.00</b>	<b>\$0.00</b>	<b>\$0.00</b>	<b>\$0.00</b>
<b>Provost</b>	<b>\$66,522.90</b>	<b>\$333,665.52</b>	<b>\$347,327.90</b>	<b>\$0.00</b>	<b>\$0.00</b>	<b>\$747,516.32</b>
ADVANCE OFFICE	\$0.00	\$0.00	\$0.00	\$0.00	\$0.00	\$0.00
LABOR RESEARCH CENTER	\$0.00	\$143,874.60	\$243,922.70	\$0.00	\$0.00	\$387,797.30
NETWORK AND TELECOM SERVICES	\$0.00	\$0.00	\$0.00	\$0.00	\$0.00	\$0.00
PROVOST	\$66,522.90	\$189,790.92	\$103,405.20	\$0.00	\$0.00	\$359,719.02
<b>VP, Administration</b>	<b>\$934,258.37</b>	<b>\$12,176.00</b>	<b>\$0.00</b>	<b>\$24,923.00</b>	<b>\$0.00</b>	<b>\$12,176.00</b>
POLICE				\$24,923.00	\$0.00	\$24,923.00
TRANSPORTATION CENTER	\$934,258.37	NA	NA	NA	NA	\$934,258.37
ADMINISTRATION	\$0.00	\$12,176.00	\$0.00	\$0.00	\$0.00	\$12,176.00
<b>VP, Research &amp; Economic Development</b>	<b>\$4,177,835.54</b>	<b>\$5,781,973.31</b>	<b>\$5,019,163.69</b>	<b>\$4,130,075.00</b>	<b>\$3,221,091.00</b>	<b>\$14,115,780.54</b>
SMALL BUSINESS DEVELOPMENT CTR	\$172,400.00	\$1,090,101.00	\$650,000.00	\$0.00	\$126,000.00	\$2,038,501.00
RESEARCH	\$4,005,435.54	\$4,011,596.00	\$0.00	\$1,650,626.00	\$484,299.00	\$10,151,956.54
TRANSPORTATION CENTER		\$680,276.31	\$1,044,239.69	\$192,007.00	\$8,800.00	\$1,925,323.00
URI RESEARCH FOUNDATION			\$3,324,924.00	\$2,287,442.00	\$2,601,992.00	\$8,214,358.00
<b>VP, Student Affairs</b>	<b>\$261,091.70</b>	<b>\$267,287.19</b>	<b>\$124,215.60</b>	<b>\$0.00</b>	<b>\$0.00</b>	<b>\$652,594.49</b>
STUDENT LIFE	\$61,523.00	\$0.00	\$0.00	\$0.00	\$0.00	\$61,523.00
TALENT DEVELOPMENT	\$199,568.70	\$142,343.19	\$118,215.60	\$0.00	\$0.00	\$460,127.49
VICE PRESIDENT STUDENT AFFAIRS		\$124,944.00	\$0.00	\$0.00	\$0.00	\$124,944.00
WOMENS CENTER			\$6,000.00	\$0.00	\$0.00	\$6,000.00

NA - Not Applicable (unit did not exist or was in another division)

# DIVISION OF RESEARCH AND ECONOMIC DEVELOPMENT

## Awards for College of Arts & Sciences

From: 7/1/2017 To: 4/30/2018

Investigator Award Total: \$3,045,615.82

### Chemistry

**Total: \$1,703,699.00**

AWARD DATE	AWARD ID	SPONSOR	INVESTIGATOR	ROLE	AWARD AMT	CREDIT	PORTION AMT	TITLE	BEGIN DATE	END DATE
1/11/2018	AWD06372	RI Commerce Corporation	Deboef,Brenton	AWPI	50000	100	\$50,000.00	Synthesis of Chemical Probes for Alcinous Pharmaceuticals	1/10/2018	12/20/2018
10/23/2017	AWD06197	Electro Standards Laboratories	Lucht,Brett	AWPI	147202	50	\$73,601.00	Tradeoff in Chemistry of Lithium Ion Battery for Energy/Power with External Lithium Ion Super Capacitor	9/8/2017	9/7/2018
7/19/2017	AWD04251	BASF Chemical Company	Lucht,Brett L	AWPI	297849	100	\$297,849.00	Development of Electrolytes for Lithium Ion Batteries	1/1/2017	12/31/2018
12/22/2017	AWD04251	BASF Chemical Company	Lucht,Brett L	AWPI	257021	100	\$257,021.00	Development of Electrolytes for Lithium Ion Batteries	1/1/2018	12/31/2018
10/4/2017	AWD06076	United States Army	Oxley,Jimmie	AWPI	202392	50	\$101,196.00	Controlled Release of Additives for Modification of Energetic Materials	9/1/2017	9/1/2018
8/21/2017	AWD03809	Northeastern University	Oxley,Jimmie C	AWPI	172836	100	\$172,836.00	AWARENESS AND LOCALIZATION OF EXPLOSIVES-RELATED THREATS (ALERT)	8/25/2013	6/30/2018
8/21/2017	AWD04284	DEFENSE THREAT REDUCTION AGENCY	Oxley,Jimmie C	AWPI	180000	50	\$90,000.00	Unique Polymer Packaging and Delivery of ADW	5/19/2014	10/1/2018
8/21/2017	AWD03809	Northeastern University	Oxley,Jimmie C	AWPI	470000	100	\$470,000.00	AWARENESS AND LOCALIZATION OF EXPLOSIVES-RELATED THREATS (ALERT)	8/25/2013	6/30/2018
10/4/2017	AWD06076	United States Army	Smith,James	WCPI	202392	50	\$101,196.00	Controlled Release of Additives for Modification of Energetic Materials	9/1/2017	9/1/2018
8/21/2017	AWD04284	DEFENSE THREAT REDUCTION AGENCY	Smith,James L	WCPI	180000	50	\$90,000.00	Unique Polymer Packaging and Delivery of ADW	5/19/2014	10/1/2018

## DIVISION OF RESEARCH AND ECONOMIC DEVELOPMENT

### Computer Science

**Total: \$113,820.72**

AWARD DATE	AWARD ID	SPONSOR	INVESTIGATOR	ROLE	AWARD AMT	CREDIT	PORTION AMT	TITLE	BEGIN DATE	END DATE
3/7/2018	AWD05906	US Department of Agriculture	Brown,David	WCPI	50000	25	\$12,500.00	Testing and Promoting Automated Green Laser Scarecrows to Reduce Bird Damage to Peri-Urban Specialty Crops	4/1/2018	3/31/2020
7/28/2017	AWD06051	RI Commerce_Corporation	Daniels,Noah	AWPI	50000	100	\$50,000.00	Prediction of Network Equipment Failure	7/17/2017	12/31/2017
7/31/2017	AWD04800	National Science Foundation	Fay-Wolfe,Victor	AWPI	45178	34	\$15,360.52	STEM+C: Computing-Based Science Investigations	9/15/2015	8/31/2018
4/2/2018	AWD04800	National Science Foundation	Fay-Wolfe,Victor	AWPI	49530	34	\$16,840.20	STEM+C: Computing-Based Science Investigations	9/15/2015	8/31/2018
9/26/2017	AWD06083	Brown University	Puggioni,Gavino	AWPI	19120	100	\$19,120.00	RI Center for Clinical and Translational Research	5/1/2017	4/30/2018

### Languages

**Total: \$742,350.00**

AWARD DATE	AWARD ID	SPONSOR	INVESTIGATOR	ROLE	AWARD AMT	CREDIT	PORTION AMT	TITLE	BEGIN DATE	END DATE
1/29/2018	AWD06010	Embassy of France in the United States	De Bruin,Karen	AWPI	10000	100	\$10,000.00	French and Pharmaceutical Sciences J-term: Transatlantic Friendship and Mobility Initiative	1/4/2018	1/21/2018
8/21/2017	AWD05196	Institute for International Education	He,Wayne Wenchao	AWPI	325860	100	\$325,860.00	Chinese Flagship 2016-2020	6/1/2017	5/31/2018
12/21/2017	AWD05961	Institute for International Education	He,Wayne Wenchao	AWPI	19015	100	\$19,015.00	Chinese Flagship-Student Support Program 2017-2018	4/1/2017	5/31/2018
1/16/2018	AWD05960	Institute for International Education	He,Wayne Wenchao	AWPI	325860	100	\$325,860.00	Chinese Flagship Program 2017-2018	6/1/2017	5/31/2018
7/28/2017	AWD05461	US Department of Education	Magidow,Alexander	AWPI	61615	100	\$61,615.00	Building Towards an International Business Program in Arabic at URI	10/1/2017	9/30/2018

## DIVISION OF RESEARCH AND ECONOMIC DEVELOPMENT

### Mathematics

**Total: \$32,648.20**

AWARD DATE	AWARD ID	SPONSOR	INVESTIGATOR	ROLE	AWARD AMT	CREDIT	PORTION AMT	TITLE	BEGIN DATE	END DATE
10/23/2017	AWD06128	RI Office of Postsecondary Commissioner	Hersey,Nicole	WCPI	326482	10	\$32,648.20	Program of Instructional Support for Teachers of English Language Learners	9/1/2017	12/1/2018

### Physics

**Total: \$21,788.00**

AWARD DATE	AWARD ID	SPONSOR	INVESTIGATOR	ROLE	AWARD AMT	CREDIT	PORTION AMT	TITLE	BEGIN DATE	END DATE
10/2/2017	AWD04732	Yale University	Andreev,Oleg	AWPI	21788	50	\$10,894.00	Mechanism and Uses of Transmembrane Helix Insertion by Soluble Peptides	1/1/2017	12/31/2017
10/2/2017	AWD04732	Yale University	Reshetnyak,Yana	WCPI	21788	50	\$10,894.00	Mechanism and Uses of Transmembrane Helix Insertion by Soluble Peptides	1/1/2017	12/31/2017

### Political Science

**Total: \$289,844.90**

AWARD DATE	AWARD ID	SPONSOR	INVESTIGATOR	ROLE	AWARD AMT	CREDIT	PORTION AMT	TITLE	BEGIN DATE	END DATE
8/16/2017	AWD05816	National Science Foundation	Krueger,Brian	WCPI	99439	15	\$14,915.85	SCC-Planning: Smart and Connected Residential Water Quality Community	8/15/2017	7/31/2018
2/28/2018	AWD06014	US Department of Agriculture	Pearson-Merkowitz,Shanna	AWPI	499871	55	\$274,929.05	CI - Municipal Finance and Land Conservation	2/15/2018	2/14/2022

### Sociology & Anthropology

**Total: \$141,465.00**

## DIVISION OF RESEARCH AND ECONOMIC DEVELOPMENT

AWARD DATE	AWARD ID	SPONSOR	INVESTIGATOR	ROLE	AWARD AMT	CREDIT	PORTION AMT	TITLE	BEGIN DATE	END DATE
1/24/2018	AWD05377	University of Puerto Rico	Garcia-Quijano, Carlos	AWPI	41465	70	\$29,025.50	CI - Coastal Forest Fisheries: A Study of Estuarine Forest Resource Dependency in the Southern Coast of Puerto Rico	2/1/2016	11/30/2018
4/17/2018	AWD06067	US Department of Agriculture	Keller, Julie	WCPI	500000	20	\$100,000.00	CI - Distributional Impacts of Farm and Open Space Conservation	4/15/2018	4/14/2021
1/24/2018	AWD05377	University of Puerto Rico	Poggie, Jonathan	WCPI	41465	30	\$12,439.50	CI - Coastal Forest Fisheries: A Study of Estuarine Forest Resource Dependency in the Southern Coast of Puerto Rico	2/1/2016	11/30/2018

# DIVISION OF RESEARCH AND ECONOMIC DEVELOPMENT

## Awards for College of Business Administration

From: 7/1/2017 To: 4/30/2018

Investigator Award Total: \$50,000.00

### Dean-Coll-Bus

**Total: \$50,000.00**

AWARD DATE	AWARD ID	SPONSOR	INVESTIGATOR	ROLE	AWARD AMT	CREDIT	PORTION AMT	TITLE	BEGIN DATE	END DATE
8/28/2017	AWD05956	Foundation for Food & Agriculture Resear	Atlas,Stephen	WCPI	100000	50	\$50,000.00	IIHI - Targeted Incentives, Food Purchases and Health Outcomes	9/1/2017	8/31/2018



## DIVISION OF RESEARCH AND ECONOMIC DEVELOPMENT

### Awards for College of Education and Professional Studies

From 7/1/2017 To: 4/30/2018

Investigator Award Total: \$739,220.44

#### Biotech Mfg Providence Cohort

**Total: \$74,384.00**

AWARD DATE	AWARD ID	SPONSOR	INVESTIGATOR	ROLE	AWARD AMT	CREDIT	PORTION AMT	TITLE	BEGIN DATE	END DATE
8/7/2017	AWD05810	Education Development Center, Inc.	Bozzi,Edward	AWPI	74384	100	\$74,384.00	RI Amgen Biotechnology Experience	7/1/2017	6/30/2018

#### CEPS Strategic Initiatives

**Total: \$237,256.00**

AWARD DATE	AWARD ID	SPONSOR	INVESTIGATOR	ROLE	AWARD AMT	CREDIT	PORTION AMT	TITLE	BEGIN DATE	END DATE
1/12/2018	AWD06354	RI Dept of Human Services	Mathews,Deborah	AWPI	38080	100	\$38,080.00	DHS Training Grant 2018 MEDICAID with AWDs 06341,06352,06353	10/1/2017	9/30/2018
1/12/2018	AWD06353	RI Dept of Human Services	Mathews,Deborah	AWPI	52956	100	\$52,956.00	RIDHS Training Grant 2018 SNAP with AWDs 06341,06352,06354	10/1/2017	9/30/2018
1/12/2018	AWD06352	RI Dept of Human Services	Mathews,Deborah	AWPI	14306	100	\$14,306.00	DHS Training Grant TANF Part of AWDs 06341,06353,06354	10/1/2017	9/30/2018
1/12/2018	AWD06341	RI Dept of Human Services	Mathews,Deborah	AWPI	131914	100	\$131,914.00	DHS Training and Consult Initiative FY18 Part of awds 06352, 06353, 06345	10/1/2017	9/30/2018

#### School of Education

**Total: \$427,580.44**

## DIVISION OF RESEARCH AND ECONOMIC DEVELOPMENT

AWARD DATE	AWARD ID	SPONSOR	INVESTIGATOR	ROLE	AWARD AMT	CREDIT	PORTION AMT	TITLE	BEGIN DATE	END DATE
10/23/2017	AWD06128	RI Office of Postsecondary Commissioner	Adamy, Peter	WCPI	326482	30	\$97,944.60	Program of Instructional Support for Teachers of English Language Learners	9/1/2017	12/1/2018
10/23/2017	AWD06128	RI Office of Postsecondary Commissioner	Byrd, David	AWPI	326482	30	\$97,944.60	Program of Instructional Support for Teachers of English Language Learners	9/1/2017	12/1/2018
11/29/2017	AWD06086	Jumpstart for Young Children, Inc.	Byrd, David	AWPI	87493	100	\$87,493.00	JUMPSTART 2018	9/1/2017	8/31/2018
1/8/2018	AWD06369	RI Innovation Education Innovation Resea	Coiro, Julie	AWPI	15000	34	\$5,100.00	Personalized Learning	8/1/2017	8/1/2018
10/23/2017	AWD06128	RI Office of Postsecondary Commissioner	Correia, Amy	WCPI	326482	30	\$97,944.60	Program of Instructional Support for Teachers of English Language Learners	9/1/2017	12/1/2018
1/8/2018	AWD06369	RI Innovation Education Innovation Resea	Deeney, Theresa	WCPI	15000	33	\$4,950.00	Personalized Learning	8/1/2017	8/1/2018
1/8/2018	AWD06369	RI Innovation Education Innovation Resea	Fogleman Jr, Jay	WCPI	15000	33	\$4,950.00	Personalized Learning	8/1/2017	8/1/2018
7/31/2017	AWD04800	National Science Foundation	Fogleman Jr, Jay A	WCPI	45178	33	\$14,908.74	STEM+C: Computing-Based Science Investigations	9/15/2015	8/31/2018
4/2/2018	AWD04800	National Science Foundation	Fogleman Jr, Jay A	WCPI	49530	33	\$16,344.90	STEM+C: Computing-Based Science Investigations	9/15/2015	8/31/2018

## DIVISION OF RESEARCH AND ECONOMIC DEVELOPMENT

### Awards for College of Engineering

From: 7/1/2017 To: 4/30/2018

Investigator Award Total: \$11,618,524.95

#### Chemical Engineering

**Total: \$4,372,526.86**

AWARD DATE	AWARD ID	SPONSOR	INVESTIGATOR	ROLE	AWARD AMT	CREDIT	PORTION AMT	TITLE	BEGIN DATE	END DATE
8/11/2017	AWD04741	University of Maryland	Bothun,Geoffrey	AWPI	28178	100	\$28,178.00	Molecular Engineering of Food-Grade Dispersants as Highly Efficient and Safe Products for the Treatment of Oil Spills	1/1/2016	12/31/2017
9/21/2017	AWD05500	National Science Foundation	Bothun,Geoffrey	AWPI	4535519	75	\$3,401,639.25	RII Track-1: Enhancing Rhode Island's Coastal Environment to Enable Growth in a Blue Economy	8/1/2017	7/31/2022
9/22/2017	AWD05994	RI Commerce Corporation	Bothun,Geoffrey	AWPI	50000	100	\$50,000.00	Evaluation of a New Cleaning Process for Medical Devices	5/21/2017	12/31/2017
10/4/2017	AWD05308	National Institute of Health	Bothun,Geoffrey	WCPI	1669877	11.7	\$195,375.60	CI - STEEP - Sources, Transport, Exposure and Effects of Perfluoroalkyl Substances	7/1/2017	3/31/2018
3/7/2018	AWD06454	RI Science and Technology Advisory Council	Bothun,Geoffrey	AWPI	380000	100	\$380,000.00	EPSCoR: RII Track 1: STAC match	9/1/2017	8/31/2022
3/8/2018	AWD04741	University of Maryland	Bothun,Geoffrey	AWPI	29276	100	\$29,276.00	Molecular Engineering of Food-Grade Dispersants as Highly Efficient and Safe Products for the Treatment of Oil Spills	1/1/2016	12/31/2018
3/30/2018	AWD05308	National Institute of Health	Bothun,Geoffrey	WCPI	1599436	11.7	\$187,134.01	CI - STEEP - Sources, Transport, Exposure and Effects of Perfluoroalkyl Substances	7/1/2017	3/31/2019
3/9/2018	AWD04597	North Carolina State University	Greenfield,Michael	AWPI	100924	100	\$100,924.00	INSPIRE: An Evolutionary Paradigm in Design and Engineering of Bio-Adhesives from Bio-Mass	9/1/2017	8/31/2019

#### Civil and Environmental Engine

**Total: \$575,192.60**

## DIVISION OF RESEARCH AND ECONOMIC DEVELOPMENT

AWARD DATE	AWARD ID	SPONSOR	INVESTIGATOR	ROLE	AWARD AMT	CREDIT	PORTION AMT	TITLE	BEGIN DATE	END DATE
2/13/2018	AWD05825	The Woodard & Curran Foundation	Akanda,Ali	WCPI	33333	50	\$16,666.50	Designing Sustainable Water Systems for Climate Change: A Case Study in Rural Dominican Republic	11/1/2016	10/30/2019
12/21/2017	AWD06042	RI Dept. of Transportation	Bradshaw,Aaron	AWPI	249430	100	\$249,430.00	Reticulated Micropiles for Preservation and Rehabilitation of Transportation Infrastructure	10/10/2017	1/31/2018
7/14/2017	AWD05857	National Science Foundation	Craver,Vinka	AWPI	40025	100	\$40,025.00	Collaborative Research: Pan American Nanotechnology Conference: Shaping the Future	8/1/2017	7/31/2018
8/8/2017	AWD05857	National Science Foundation	Craver,Vinka	AWPI	7000	100	\$7,000.00	Collaborative Research: Pan American Nanotechnology Conference: Shaping the Future	8/1/2017	7/31/2018
8/16/2017	AWD05816	National Science Foundation	Craver,Vinka	AWPI	99439	40	\$39,775.60	SCC-Planning: Smart and Connected Residential Water Quality Community	8/15/2017	7/31/2018
2/13/2018	AWD05825	The Woodard & Curran Foundation	Craver,Vinka	AWPI	33333	50	\$16,666.50	Designing Sustainable Water Systems for Climate Change: A Case Study in Rural Dominican Republic	11/1/2016	10/30/2019
7/5/2017	AWD03893	National Science Foundation	Craver,Vinka A	PI	6631	100	\$6,631.00	CAREER: BACTERIAL ADAPTATION MECHANISM TO CHRONIC EXPOSURE TO NANOPARTICLES AND ITS IMPLICATIONS TO NANOMANUFACTURING AND PUBLIC HEALTH	5/1/2014	4/30/2019
7/14/2017	AWD03893	National Science Foundation	Craver,Vinka A	PI	49966	100	\$49,966.00	CAREER: BACTERIAL ADAPTATION MECHANISM TO CHRONIC EXPOSURE TO NANOPARTICLES AND ITS IMPLICATIONS TO NANOMANUFACTURING AND PUBLIC HEALTH	5/1/2014	4/30/2019
10/22/2017	AWD03893	National Science Foundation	Craver,Vinka A	PI	88732	100	\$88,732.00	CAREER: BACTERIAL ADAPTATION MECHANISM TO CHRONIC EXPOSURE TO NANOPARTICLES AND ITS IMPLICATIONS TO NANOMANUFACTURING AND PUBLIC HEALTH	5/1/2014	4/30/2019
8/17/2017	AWD06138	Rhode Island Marine Trade Association	Das,Sumanta	AWPI	45000	34	\$15,300.00	Phase 1: Composite Materials for Bridges in Rhode Island	8/29/2017	12/31/2017
8/30/2017	AWD06175	Rhode Island Marine Trade Association	Das,Sumanta	AWPI	45000	34	\$15,300.00	Phase 1: Composite Materials for Bridges in Rhode Island	8/29/2017	12/31/2017
8/17/2017	AWD06138	Rhode Island Marine Trade Association	Tsiatas,George	WCPI	45000	33	\$14,850.00	Phase 1: Composite Materials for Bridges in Rhode Island	8/29/2017	12/31/2017
8/30/2017	AWD06175	Rhode Island Marine Trade Association	Tsiatas,George	WCPI	45000	33	\$14,850.00	Phase 1: Composite Materials for Bridges in Rhode Island	8/29/2017	12/31/2017

## DIVISION OF RESEARCH AND ECONOMIC DEVELOPMENT

### Dean Engineering

**Total: \$286,064.00**

AWARD DATE	AWARD ID	SPONSOR	INVESTIGATOR	ROLE	AWARD AMT	CREDIT	PORTION AMT	TITLE	BEGIN DATE	END DATE
8/7/2017	AWD05770	National Science Foundation	He,Haibo	AWPI	221188	100	\$221,188.00	Collaborative Research: Enabling Dynamic Spectrum Access for Future Broadband Wireless Networks Using Neuromorphic Computing	8/15/2017	7/31/2020
10/10/2017	AWD05137	University of Connecticut STORRS	Wright,Raymond	AWPI	64876	100	\$64,876.00	Northeast LSAMP Senior Alliance: 2016-2021	9/1/2016	8/31/2018

### Elec. Computer & Bio Engr

**Total: \$3,962,262.70**

AWARD DATE	AWARD ID	SPONSOR	INVESTIGATOR	ROLE	AWARD AMT	CREDIT	PORTION AMT	TITLE	BEGIN DATE	END DATE
7/21/2017	AWD05595	National Science Foundation	Besio,Walter	AWPI	199999	100	\$199,999.00	FromLab to Market - Transcranial Focal Electrical Stimulation (TFS) for Epilepsy	7/15/2017	12/31/2018
9/20/2017	AWD04693	National Science Foundation	Besio,Walter	AWPI	2999965	65	\$1,949,977.25	RII Track -2 FEC: Innovative, Broadly Accessible Tools for Brain Imaging, Decoding, and Modulation	8/1/2015	7/31/2019
9/20/2017	AWD04693	National Science Foundation	Kennedy,Stephen	WCPI	2999965	15	\$449,994.75	RII Track -2 FEC: Innovative, Broadly Accessible Tools for Brain Imaging, Decoding, and Modulation	8/1/2015	7/31/2019
7/18/2017	AWD05689	National Science Foundation	Li,Bin	AWPI	301430	100	\$301,430.00	NETS:Small:Principles and Protocols for traffic-insensitive performance in wireless networks	10/1/2017	9/30/2020
7/7/2017	AWD05100	Rhode Island Hospital	Mankodiya,Kunal	AWPI	14731	100	\$14,731.00	Understanding the Interplay of Social Context and Physiology on Psychological Outcomes in Trauma-Exposed Adolescents	4/1/2017	3/31/2018
7/11/2017	AWD05662	Pet Tech	Mankodiya,Kunal	AWPI	50000	100	\$50,000.00	PetRover - A Robotized Entertaining Pet Toy Integrated with Internet-of-things Technology	5/1/2017	4/30/2018
8/7/2017	AWD05912	RI Commerce Corporation	Mankodiya,Kunal	AWPI	50000	100	\$50,000.00	Smart Billboards: An Internet of Infrastructure for Smart Cities	6/1/2017	4/30/2018
8/16/2017	AWD05816	National Science Foundation	Mankodiya,Kunal	WCPI	99439	30	\$29,831.70	SCC-Planning: Smart and Connected Residential Water Quality Community	8/15/2017	7/31/2018
9/20/2017	AWD04693	National Science Foundation	Mankodiya,Kunal	WCPI	2999965	20	\$599,993.00	RII Track -2 FEC: Innovative, Broadly Accessible Tools for Brain Imaging, Decoding, and Modulation	8/1/2015	7/31/2019

## DIVISION OF RESEARCH AND ECONOMIC DEVELOPMENT

AWARD DATE	AWARD ID	SPONSOR	INVESTIGATOR	ROLE	AWARD AMT	CREDIT	PORTION AMT	TITLE	BEGIN DATE	END DATE
10/23/2017	AWD06197	Electro Standards Laboratories	Vaccaro, Richard	WCPI	147202	50	\$73,601.00	Tradeoff in Chemistry of Lithium Ion Battery for Energy/Power with External Lithium Ion Super Capacitor	9/8/2017	9/7/2018
7/31/2017	AWD05665	US of Office of Naval Research	Wei, Tao	AWPI	170000	100	\$170,000.00	ONR YIP: Sub-Terahertz-Range-Interrogated Fiber-Optic Devices for High-Speed Distributed Sensing Applications	6/1/2017	5/30/2020
9/12/2017	AWD05693	URI Research Foundation	Wei, Tao	AWPI	72705	100	\$72,705.00	Joint Research Project Between Dapu Tech and URI	8/25/2016	8/25/2018

### Mech., Ind., Sys. Engineering

**Total: \$585,060.38**

AWARD DATE	AWARD ID	SPONSOR	INVESTIGATOR	ROLE	AWARD AMT	CREDIT	PORTION AMT	TITLE	BEGIN DATE	END DATE
7/5/2017	AWD05612	U.S. Nuclear Regulatory Commission	Nassersharif, Bahram	AWPI	126880	100	\$126,880.00	NEEPRI-NRC Scholarships	6/30/2017	6/29/2019
7/12/2017	AWD05891	RI Commerce Corporation	Nassersharif, Bahram	AWPI	49895	100	\$49,895.00	Design Investigation of Body Armor	6/12/2017	12/12/2018
2/23/2018	AWD06087	RI Commerce Corporation	Rousseau, Carl-Ernst	AWPI	48106	50	\$24,053.00	Innovation Voucher: CBC 160KW Turbine	1/1/2018	12/31/2018
7/21/2017	AWD05621	US of Office of Naval Research	Shukla, Arun	AWPI	5000	100	\$5,000.00	Implosion of Advanced Composite Structures Within Complex Underwater Environments	1/1/2017	12/31/2019
8/17/2017	AWD06138	Rhode Island Marine Trade Association	Shukla, Arun	WCPI	45000	33	\$14,850.00	Phase 1: Composite Materials for Bridges in Rhode Island	8/29/2017	12/31/2017
8/30/2017	AWD06175	Rhode Island Marine Trade Association	Shukla, Arun	WCPI	45000	33	\$14,850.00	Phase 1: Composite Materials for Bridges in Rhode Island	8/29/2017	12/31/2017
9/7/2017	AWD05915	University of Connecticut STORRS	Shukla, Arun	WCPI	204114	33	\$67,357.62	Southeast New England Naval STEM Coalition: Advancing the Navy's STEM Education and Workforce Capabilities	9/1/2017	8/30/2018
12/13/2017	AWD05621	US of Office of Naval Research	Shukla, Arun	AWPI	30000	100	\$30,000.00	Implosion of Advanced Composite Structures Within Complex Underwater Environments	1/1/2017	12/31/2017
2/14/2018	AWD04897	Naval Undersea Warfare Center	Shukla, Arun	AWPI	108723	100	\$108,723.00	Shock Response of Composite Materials Subjected to Aggressive Marine Environments: An Experimental and Computational Investigation	2/10/2016	7/1/2018

## DIVISION OF RESEARCH AND ECONOMIC DEVELOPMENT

AWARD DATE	AWARD ID	SPONSOR	INVESTIGATOR	ROLE	AWARD AMT	CREDIT	PORTION AMT	TITLE	BEGIN DATE	END DATE
8/1/2017	AWD05916	RI Commerce Corporation	Taggart,David	AWPI	50000	50	\$25,000.00	Simulation Models for Inflatable Drop Stitch Structures	7/1/2017	6/30/2018
9/7/2017	AWD05915	University of Connecticut STORRS	Taggart,David	AWPI	204114	34	\$69,398.76	Southeast New England Naval STEM Coalition: Advancing the Navy's STEM Education and Workforce Capabilities	9/1/2017	8/30/2018
2/23/2018	AWD06087	RI Commerce Corporation	Taggart,David G	WCPI	48106	50	\$24,053.00	Innovation Voucher: CBC 160KW Turbine	1/1/2018	12/31/2018
8/1/2017	AWD05916	RI Commerce Corporation	Tsiatas,George	WCPI	50000	50	\$25,000.00	Simulation Models for Inflatable Drop Stitch Structures	7/1/2017	6/30/2018

### Ocean Engineering

**Total: \$1,837,418.41**

AWARD DATE	AWARD ID	SPONSOR	INVESTIGATOR	ROLE	AWARD AMT	CREDIT	PORTION AMT	TITLE	BEGIN DATE	END DATE
7/20/2017	AWD05503	US of Office of Naval Research	Dahl,Jason	WCPI	50000	50	\$25,000.00	Further Development and Validation of an Efficient Hybrid-BEM-LBM Model for Fluid-Structure Interaction Problems	9/1/2016	8/31/2021
10/26/2017	AWD05370	US of Office of Naval Research	Dahl,Jason	AWPI	100000	100	\$100,000.00	Integrated Experiments and Simulation for Hydrodynamic Control and Detection	9/1/2016	8/31/2020
3/15/2018	AWD06049	Creare LLC	Dahl,Jason	AWPI	37650	34	\$12,801.00	Estimation of Sea State Based on Measured ship Response	1/11/2018	6/29/2018
3/16/2018	AWD05503	US of Office of Naval Research	Dahl,Jason	WCPI	130000	50	\$65,000.00	Further Development and Validation of an Efficient Hybrid-BEM-LBM Model for Fluid-Structure Interaction Problems	9/1/2016	8/31/2021
3/16/2018	AWD05370	US of Office of Naval Research	Dahl,Jason	AWPI	50000	100	\$50,000.00	Integrated Experiments and Simulation for Hydrodynamic Control and Detection	9/1/2016	8/31/2020
10/4/2017	AWD06212	RI Coastal Res Mgt.Council	Grilli,Annette	AWPI	266823	100	\$266,823.00	HUD VI Design Elevation Maps	10/1/2017	1/31/2019
10/10/2017	AWD06217	RI Coastal Res Mgt.Council	Grilli,Annette	WCPI	50000	50	\$25,000.00	A Hydrodynamic Model Study to Assess the Impact of Dredging the Channels Connecting Ninigret and Green Hill Pont on Circulation and Flushing of Green Hill Pont, Charlestown, RI	10/4/2017	4/15/2018
10/12/2017	AWD05983	University of Delaware	Grilli,Annette	WCPI	49953	50	\$24,976.50	Modeling Tsunami Inundation and Hazard for the US East Coast (Phase 6)	9/1/2017	8/31/2019

## DIVISION OF RESEARCH AND ECONOMIC DEVELOPMENT

AWARD DATE	AWARD ID	SPONSOR	INVESTIGATOR	ROLE	AWARD AMT	CREDIT	PORTION AMT	TITLE	BEGIN DATE	END DATE
12/22/2017	AWD05699	RI Coastal Res Mgt.Council	Grilli,Annette	WCPI	137467	68	\$93,477.56	CI - Developing the Rhode Island Coastal Environmental Risk Index to Inform State and Local Planning and Decision Making	10/1/2017	12/31/2018
2/22/2018	AWD06170	National Science Foundation	Grilli,Annette	WCPI	488653	50	\$244,326.50	NSFGEO-NERC Caldera-Forming Eruption-Generated Tsunamis	3/1/2018	2/28/2021
3/15/2018	AWD06049	Creare LLC	Grilli,Annette	WCPI	37650	33	\$12,424.50	Estimation of Sea State Based on Measured ship Response	1/11/2018	6/29/2018
7/20/2017	AWD05503	US of Office of Naval Research	Grilli,Stephan	AWPI	50000	50	\$25,000.00	Further Development and Validation of an Efficient Hybrid-BEM-LBM Model for Fluid-Structure Interaction Problems	9/1/2016	8/31/2021
10/12/2017	AWD05983	University of Delaware	Grilli,Stephan	AWPI	49953	50	\$24,976.50	Modeling Tsunami Inundation and Hazard for the US East Coast (Phase 6)	9/1/2017	8/31/2019
2/22/2018	AWD06170	National Science Foundation	Grilli,Stephan	AWPI	488653	25	\$122,163.25	NSFGEO-NERC Caldera-Forming Eruption-Generated Tsunamis	3/1/2018	2/28/2021
3/15/2018	AWD06049	Creare LLC	Grilli,Stephan	WCPI	37650	33	\$12,424.50	Estimation of Sea State Based on Measured ship Response	1/11/2018	6/29/2018
3/16/2018	AWD05503	US of Office of Naval Research	Grilli,Stephan	AWPI	130000	50	\$65,000.00	Further Development and Validation of an Efficient Hybrid-BEM-LBM Model for Fluid-Structure Interaction Problems	9/1/2016	8/31/2021
10/3/2017	AWD06155	RI Coastal Res Mgt.Council	Hashemi,S. M. Reza	WCPI	189900	50	\$94,950.00	CI - HUD V BEACH SAMP	10/1/2017	1/28/2019
10/10/2017	AWD06217	RI Coastal Res Mgt.Council	Hashemi,S. M. Reza	AWPI	50000	50	\$25,000.00	A Hydrodynamic Model Study to Assess the Impact of Dredging the Channels Connecting Ninigret and Green Hill Pont on Circulation and Flushing of Green Hill Pont, Charlestown, RI	10/4/2017	4/15/2018
10/12/2017	AWD04881	Naval Undersea Warfare Center	Licht,Stephen	AWPI	104258.82	100	\$104,258.82	NEEC: Modeling and Control of Agile Biologically Inspired Unmanned Underwater Vehicles	9/30/2016	9/29/2018
7/7/2017	AWD06012	Deepwater Wind LLC	Miller,James	AWPI	40000	34	\$13,600.00	Technology Demonstration for Real Time Passive Whale Tracking Near Offshore Wind Energy Facilities	6/15/2017	8/31/2018
7/14/2017	AWD05336	US of Office of Naval Research	Miller,James	AWPI	80000	50	\$40,000.00	Low Frequency Acoustic Propagation: The Effects of Sediment Properties	4/1/2016	9/30/2019
9/7/2017	AWD05915	University of Connecticut STORRS	Miller,James	WCPI	204114	33	\$67,357.62	Southeast New England Naval STEM Coalition: Advancing the Navy's STEM Education and Workforce Capabilities	9/1/2017	8/30/2018
9/22/2017	AWD06011	US Dept of Interior	Miller,James	WCPI	166551	20	\$33,310.20	CI - Assessing Movements of Nanotagged Birds Near the Block Island Wind Farm: A Validation Study	9/22/2017	1/22/2020



## DIVISION OF RESEARCH AND ECONOMIC DEVELOPMENT

AWARD DATE	AWARD ID	SPONSOR	INVESTIGATOR	ROLE	AWARD AMT	CREDIT	PORTION AMT	TITLE	BEGIN DATE	END DATE
10/11/2017	AWD06078	HDR / e2M	Miller,James	AWPI	51550	50	\$25,775.00	Summer 2017 BIWF Program and Quicklook Data Analyses	8/22/2017	2/28/2018
12/6/2017	AWD04743	Brown University	Miller,James	AWPI	50000	50	\$25,000.00	Remote Sensing of Sub-Surface Structure of Exterrestrial Bodies Using Laser Doppler Velocimetry Measurements of Rayleigh Waves	5/6/2015	5/5/2018
1/29/2018	AWD06238	HDR / e2M	Miller,James	AWPI	3462.62	5	\$173.13	Supplement 2 : Underwater Acoustic Data Analysis and Measurements for the Block Island Wind Farm Construction and Operation	7/21/2017	12/31/2017
7/7/2017	AWD06012	Deepwater Wind LLC	Potty,Gopu	WCPI	40000	33	\$13,200.00	Technology Demonstration for Real Time Passive Whale Tracking Near Offshore Wind Energy Facilities	6/15/2017	8/31/2018
7/14/2017	AWD05336	US of Office of Naval Research	Potty,Gopu	WCPI	80000	50	\$40,000.00	Low Frequency Acoustic Propagation: The Effects of Sediment Properties	4/1/2016	9/30/2019
9/22/2017	AWD06011	US Dept of Interior	Potty,Gopu	WCPI	166551	20	\$33,310.20	CI - Assessing Movements of Nanotagged Birds Near the Block Island Wind Farm: A Validation Study	9/22/2017	1/22/2020
10/11/2017	AWD06078	HDR / e2M	Potty,Gopu	WCPI	51550	50	\$25,775.00	Summer 2017 BIWF Program and Quicklook Data Analyses	8/22/2017	2/28/2018
12/6/2017	AWD04743	Brown University	Potty,Gopu	WCPI	50000	50	\$25,000.00	Remote Sensing of Sub-Surface Structure of Exterrestrial Bodies Using Laser Doppler Velocimetry Measurements of Rayleigh Waves	5/6/2015	5/5/2018
1/29/2018	AWD06238	HDR / e2M	Potty,Gopu	WCPI	3462.62	5	\$173.13	Supplement 2 : Underwater Acoustic Data Analysis and Measurements for the Block Island Wind Farm Construction and Operation	7/21/2017	12/31/2017
7/7/2017	AWD06012	Deepwater Wind LLC	Van Uffelen,Lora	WCPI	40000	33	\$13,200.00	Technology Demonstration for Real Time Passive Whale Tracking Near Offshore Wind Energy Facilities	6/15/2017	8/31/2018
12/7/2017	AWD05506	US of Office of Naval Research	Van Uffelen,Lora	AWPI	87942	100	\$87,942.00	Glider-Based Measurements of Acoustic Tomography Signals:Modeling and Experiment in the Canada Basin and Philippine Sea	3/15/2017	12/31/2019

## DIVISION OF RESEARCH AND ECONOMIC DEVELOPMENT

### Awards for College of the Environment and Life Sciences

From: 7/1/2017 To: 4/30/2018

Investigator Award Total: \$14,972,981.02

#### Biochem-Microb-Molecular Gen.

**Total: \$60,697.00**

AWARD DATE	AWARD ID	SPONSOR	INVESTIGATOR	ROLE	AWARD AMT	CREDIT	PORTION AMT	TITLE	BEGIN DATE	END DATE
8/7/2017	AWD04282	University of California at Davis	Rothman,Alan	AWPI	60697	100	\$60,697.00	Quantifying Heterogeneities in Dengue Virus Transmission Dynamics	5/1/2015	4/30/2017

#### CELS Academic Unit 1

**Total: \$1,347,770.49**

AWARD DATE	AWARD ID	SPONSOR	INVESTIGATOR	ROLE	AWARD AMT	CREDIT	PORTION AMT	TITLE	BEGIN DATE	END DATE
11/22/2017	AWD06037	National Crop Insurance Services	Alm,Steven	AWPI	122395	100	\$122,395.00	Risk Management and Crop Insurance Education for Rhode Island Growers 2017-18	10/1/2017	9/30/2018
1/16/2018	AWD06324	eXtension Foundation	Alm,Steven	AWPI	22575	100	\$22,575.00	Rhode Island Pesticide Safety Education Program 2018	1/1/2018	12/31/2018
3/23/2018	AWD06046	US Golf Association Foundation	Alm,Steven	AWPI	10000	100	\$10,000.00	Biorational Control of Annual Bluegrass Weevil Adults and Larvae with Petroleum-Derived Spray Oils and Soil Surfactants	1/1/2018	12/31/2018
1/19/2018	AWD05923	US Department of Agriculture	Brown,Rebecca	AWPI	74952	100	\$74,952.00	Innovative Cover Cropping Strategies for Management of Soil Carbon, Nitrogen, and Phosphorus on Peri-urban Farms	12/20/2017	9/30/2020
3/7/2018	AWD05906	US Department of Agriculture	Brown,Rebecca	AWPI	50000	75	\$37,500.00	Testing and Promoting Automated Green Laser Scarecrows to Reduce Bird Damage to Peri-Urban Specialty Crops	4/1/2018	3/31/2020
4/4/2018	AWD06569	RI Dept of Environ Magt	Brown,Rebecca	AWPI	50000	100	\$50,000.00		4/1/2018	3/31/2020
10/6/2017	AWD05979	University of Vermont	Faubert,Heather	AWPI	20500	100	\$20,500.00	Season Extension with Caterpillar Tunnels on Rhode Island Farms	10/1/2017	10/31/2018

## DIVISION OF RESEARCH AND ECONOMIC DEVELOPMENT

AWARD DATE	AWARD ID	SPONSOR	INVESTIGATOR	ROLE	AWARD AMT	CREDIT	PORTION AMT	TITLE	BEGIN DATE	END DATE
12/4/2017	AWD05412	Cornell University	Faubert,Heather	AWPI	20060	100	\$20,060.00	Northeast Plant Diagnostic Network FY 2016/2018	9/1/2016	8/31/2018
9/12/2017	AWD05028	US Department of Agriculture	Gomez-Chiarri,Marta	AWPI	47481	100	\$47,481.00	Defining Disease Resistant and Tolerant Phenotypes Among Selectively Bred Oyster Families	9/1/2015	8/30/2020
9/26/2017	AWD06153	Auburn University	Gomez-Chiarri,Marta	AWPI	10000	100	\$10,000.00	CELS: NRSP8 Auburn - Evaluating the Genetic Potential for Environmental Adaptation in Eastern Oysters Through Resequencing E	8/1/2017	7/31/2018
10/3/2017	AWD04240	US Department of Agriculture	Gomez-Chiarri,Marta	AWPI	41850	100	\$41,850.00	CI - Sequencing the Genome of the Eastern Oyster	2/1/2015	1/31/2018
10/13/2017	AWD06054	RI Commerce_Corporation	Gomez-Chiarri,Marta	AWPI	50000	100	\$50,000.00	RI Innovation Voucher: The Matunuck Hatchery: Product Diversification and Vertical Integration in a Sustainable Seafood Business	9/5/2017	7/31/2018
11/22/2017	AWD06040	US Department of Agriculture	Gomez-Chiarri,Marta	AWPI	403.48	100	\$403.48	USDA RESEARCH SERVICES AGREEMENT 2017/2018	7/1/2017	6/30/2018
4/24/2018	AWD06610	The Nature Conservancy	Gomez-Chiarri,Marta	AWPI	12000	50	\$6,000.00	Effects of Estuarine Acidification on Adult Eastern Oyster Microbiomes and Health in Narragansett Bay	3/1/2018	12/31/2018
12/1/2017	AWD06250	Kansas State University	Horan,Kristina	WCPI	22496	5	\$1,124.80	RI 2018 4-H Military Partnership Grant	10/1/2017	9/30/2018
8/24/2017	AWD05393	US Dept of Commerce NOAA	Humphries,Austin	AWPI	299434	60	\$179,660.40	Optimizing Kelp and Oyster Integrated Multi-Trophic Aquaculture: Developing a Spatially Explicit Ecosystem Model	9/1/2017	8/31/2019
1/18/2018	AWD05702	Institut Pertanian Bogor	Humphries,Austin	AWPI	12600	20	\$2,520.00	USAID SHERA: Interdisciplinary Research Towards an Integrated Ecosystem Approach to Management of Coral Reef Fisheries and Tourism in Indonesia	12/10/2017	2/28/2018
4/19/2018	AWD06593	The Nature Conservancy	Humphries,Austin	AWPI	12000	100	\$12,000.00	The Ecological Potential for Gear Solutions in Coral Reef Fisheries Conservation and Management	3/1/2018	12/31/2018
3/14/2018	AWD05779	University of Maine	Lee,Chong	AWPI	5000	100	\$5,000.00	A Novel Approach To Prevent Super Chill In Atlantic Salmon	10/1/2016	9/30/2018
11/21/2017	AWD06295	Western Connecticut State University	Mather,Thomas	AWPI	188565	100	\$188,565.00	Spatially Scalable Integrated Tick Vector/Rodent Reservoir Management Reduce Human Risk of Exposure to Ixodes Scapularis Ticks Infected with Lyme Disease Spirochetes	9/1/2017	8/31/2018
12/1/2017	AWD06250	Kansas State University	Morreira,Marcia	WCPI	22496	5	\$1,124.80	RI 2018 4-H Military Partnership Grant	10/1/2017	9/30/2018

## DIVISION OF RESEARCH AND ECONOMIC DEVELOPMENT

AWARD DATE	AWARD ID	SPONSOR	INVESTIGATOR	ROLE	AWARD AMT	CREDIT	PORTION AMT	TITLE	BEGIN DATE	END DATE
9/6/2017	AWD04651	University of Vermont	Petersson,Katherine	AWPI	18545	100	\$18,545.00	New Approaches for Improving Integrated Parasite Control Strategies in the Northeast	9/1/2015	12/31/2018
9/22/2017	AWD06079	University of Vermont	Petersson,Katherine	AWPI	14640	100	\$14,640.00	The Effect of Season Upon the Life Cycle and Development of Haemonchus Contortus in Experimentally Infected Lambs	7/24/2017	5/31/2019
8/21/2017	AWD05374	RI Department of Health	Pivarnik,Lori	AWPI	40975	100	\$40,975.00	RI Plan to Enhance produce Safety by Implementing the DFA FSMA produce Safety Rule	7/1/2017	6/30/2018
12/8/2017	AWD06085	University of Massachusetts, Amherst	Pivarnik,Lori	WCPI	109580	30	\$32,874.00	Food Safety Management Training for Small and Emerging Food Businesses: Integrating a Food Safety Culture from Concept to Commercialization	9/1/2017	8/31/2020
12/21/2017	AWD05678	University of Maryland	Rice,Michael	AWPI	8000	100	\$8,000.00	Inventory of Barriers in the Northeast that Limit the Aquaculture Industry	10/1/2017	9/30/2018
1/18/2018	AWD05702	Institut Pertanian Bogor	Rice,Michael	WCPI	12600	10	\$1,260.00	USAID SHERA: Interdisciplinary Research Towards an Integrated Ecosystem Approach to Management of Coral Reef Fisheries and Tourism in Indonesia	12/10/2017	2/28/2018
12/8/2017	AWD06085	University of Massachusetts, Amherst	Richard,Nicole	AWPI	109580	70	\$76,706.00	Food Safety Management Training for Small and Emerging Food Businesses: Integrating a Food Safety Culture from Concept to Commercialization	9/1/2017	8/31/2020
9/5/2017	AWD03778	US Department of Agriculture	Sebelia,Linda	AWPI	140000	100	\$140,000.00	CELS: INTEGRATING NUTRITION EDUCATION INTO PROVIDENCE FULL SERVICE SCHOOLS IN PROVIDENCE RI	9/1/2013	8/31/2018
2/27/2018	AWD06428	RI Dept of Environ Magt	Somers,Barbara	AWPI	52000	100	\$52,000.00	Research Vessel Cap'n Bert Engine Repower	12/15/2017	8/31/2018
10/2/2017	AWD05789	University of Connecticut STORRS	Tewksbury,Elizabeth	AWPI	4000	100	\$4,000.00	Biological Control of the Lily Leaf Beetle	4/1/2017	3/31/2018
3/19/2018	AWD06417	US Department of Agriculture	Tewksbury,Elizabeth	AWPI	6451	100	\$6,451.00	Biological Control of Mile-a-Minute Weed	3/1/2017	6/1/2018
3/27/2018	AWD06418	US Department of Agriculture	Tewksbury,Elizabeth	AWPI	14301	100	\$14,301.00	Rearing, Release and Monitoring of Hypenapopulenta	3/1/2018	2/28/2019
7/28/2017	AWD05799	Providence Parks and Recreation	Venturini,Kate	AWPI	6800	100	\$6,800.00	Learning Landscape Field Trips at Roger Williams Park Botanical Center	1/1/2016	12/31/2017
4/19/2018	AWD06540	RI Office of Energy Resources	Venturini,Kate	AWPI	7260.61	100	\$7,260.61	RI Office of Energy Resources 2018 Policy Fellowships	2/1/2018	12/31/2018
12/1/2017	AWD06250	Kansas State University	Wright,Heidi	AWPI	22496	90	\$20,246.40	RI 2018 4-H Military Partnership Grant	10/1/2017	9/30/2018

## DIVISION OF RESEARCH AND ECONOMIC DEVELOPMENT

### CELS Academic Unit 2

**Total: \$5,073,345.76**

AWARD DATE	AWARD ID	SPONSOR	INVESTIGATOR	ROLE	AWARD AMT	CREDIT	PORTION AMT	TITLE	BEGIN DATE	END DATE
7/18/2017	AWD05905	US Fish and Wildlife Service	August, Peter	AWPI	45203	100	\$45,203.00	CI - Long Island Sound Eelgrass Mapping and Trends Analysis	7/11/2017	6/30/2018
7/20/2017	AWD05894	Rhode Island Division of Planning	August, Peter	AWPI	56000	100	\$56,000.00	CI - FY18 Sustaining and Enhancing Access to the Rhode Island Geographic Information System (RIGIS)	7/1/2017	6/30/2018
7/31/2017	AWD05695	RI Dept of Environ Magt	August, Peter	AWPI	12620	100	\$12,620.00	CI - GPS Elevation Analysis for Tier 3 of Salt Marsh Monitoring and Assessment Plan for the State of Rhode Island	7/14/2017	5/31/2018
8/29/2017	AWD04871	US Dept of Interior	August, Peter	AWPI	92070	25	\$23,017.50	CI - Resource Based Geospatial and Enterprise GIS Support to the NER of the NPS FY15	8/24/2017	9/15/2018
9/20/2017	AWD05886	US Dept of Interior	August, Peter	AWPI	35000	100	\$35,000.00	CI - Development of a Web-Based System to Geoenable NER Parks and Programs	9/15/2017	3/1/2018
10/10/2017	AWD06219	McLaughlin Research Corporation	August, Peter	AWPI	10626	100	\$10,626.00	CI - GIS Support Services for the Naval Undersea Warfare (NUWC DIVNPT) Center's Marine Environmental Planning Laboratory (MEP) FY18	9/21/2017	12/31/2017
12/5/2017	AWD06260	RI Coastal Res Mgt. Council	August, Peter	AWPI	568807	100	\$568,807.00	CI - Technical Support for Salt Marsh Restoration	11/22/2017	10/31/2018
2/22/2018	AWD06510	McLaughlin Research Corporation	August, Peter	AWPI	9945	100	\$9,945.00	CI - GIS Support Services for the Naval Undersea Warfare (NUWC DIVNPT) Center's Marine Environmental Planning Laboratory (MEP)	1/19/2018	9/30/2018
7/13/2017	AWD04872	US Army Corps of Engineers	Becker, Austin H	AWPI	39700	100	\$39,700.00	CI - Measuring Risk to Inform Resilience: Pilot Study for North Atlantic Medium and High Use Maritime Freight Nodes	6/20/2016	12/19/2017
8/24/2017	AWD04872	US Army Corps of Engineers	Becker, Austin H	AWPI	94555	100	\$94,555.00	CI - Measuring Risk to Inform Resilience: Pilot Study for North Atlantic Medium and High Use Maritime Freight Nodes	6/20/2016	12/19/2018
4/18/2018	AWD04872	US Army Corps of Engineers	Becker, Austin H	AWPI	40552	100	\$40,552.00	CI - Measuring Risk to Inform Resilience: Pilot Study for North Atlantic Medium and High Use Maritime Freight Nodes	6/20/2016	12/19/2018
4/30/2018	AWD05485	Craig H. Neilsen Foundation	Bourbonniere, Annette M	WCPI	99404	30	\$29,821.20	Using Stated Preferences to Examine Disincentives to Employment for Persons with Spinal Cord Injuries	4/30/2017	4/30/2019
9/15/2017	AWD05913	RI Office of Housing & Comm Development	Boving, Thomas	WCPI	582913	50	\$291,456.50	Assessment and Modeling of Saltwater Intrusion into Coastal Aquifers of Rhode Island	8/25/2017	8/30/2019

## DIVISION OF RESEARCH AND ECONOMIC DEVELOPMENT

AWARD DATE	AWARD ID	SPONSOR	INVESTIGATOR	ROLE	AWARD AMT	CREDIT	PORTION AMT	TITLE	BEGIN DATE	END DATE
9/12/2017	AWD06148	RI Resource Conservation & Development C	Buffum,William	AWPI	40000	100	\$40,000.00	Forestry Assistance to NRCS	10/1/2017	9/30/2018
7/18/2017	AWD06047	Brown University	Cardace,Dawn	AWPI	8925	100	\$8,925.00	Microbial Attachment Processes in Rock-Powered Ecosystems	6/1/2017	8/31/2017
7/18/2017	AWD06048	Brown University	Cardace,Dawn	AWPI	33453	100	\$33,453.00	Mapping Carbonaceous Matter in Serpentinites: Occurrence and Importance to Astrobiology	9/1/2017	5/31/2018
9/7/2017	AWD04224	University of Colorado Boulder	Cardace,Dawn	AWPI	111895	100	\$111,895.00	Rock Powered Life: Revealing Mechanisms of Energy Transfer from the Lithosphere to the Biosphere	4/29/2015	12/31/2019
8/29/2017	AWD04871	US Dept of Interior	Cressman,Jessica A.	WCPI	92070	25	\$23,017.50	CI - Resource Based Geospatial and Enterprise GIS Support to the NER of the NPS FY15	8/24/2017	9/15/2018
1/5/2018	AWD06193	RI Dept of Environ Magt	Dalton,Tracey	AWPI	22722	100	\$22,722.00	Collecting Fishers' Knowledge to Inform Jonah Crab Research and Management in Southern New England	1/1/2018	12/31/2018
7/24/2017	AWD05405	US Dept of Interior	Druschke,Caroline	AWPI	69994	100	\$69,994.00	CI - Science Communication Outreach for the Northeast Coastal and Barrier Network	6/15/2016	9/30/2018
10/6/2017	AWD04699	University of New Hampshire	Druschke,Caroline	WCPI	851581	20	\$170,316.20	CI - RII Track-2 FEC: Strengthening the Scientific Basis for Decision-Making About Dams: Multi-Scale, Coupled-Systems Research on Ecological, Social, and Economic Trade-Offs	8/1/2015	7/31/2019
8/29/2017	AWD04871	US Dept of Interior	Duhaime,Roland	WCPI	92070	25	\$23,017.50	CI - Resource Based Geospatial and Enterprise GIS Support to the NER of the NPS FY15	8/24/2017	9/15/2018
3/20/2018	AWD05814	Earthwatch Institute, Inc.	Engelhart,Simon	AWPI	14450	100	\$14,450.00	Reconstructing Sea-Level Rise in New England Salt Marshes	2/13/2017	4/1/2018
4/27/2018	AWD06032	INQUA	Engelhart,Simon	AWPI	6100	100	\$6,100.00	Late Quaternary Records of Coastal Inundation Due to Earth Surface Deformation, Tsunami, and Storms	1/1/2017	12/31/2018
4/30/2018	AWD06627	United Nations Educational, Scientific	Engelhart,Simon	AWPI	8000	100	\$8,000.00	Sea-Level Changes from Minutes to Millennia	4/30/2016	12/31/2018
8/3/2017	AWD06004	RI Department of Health	Gold,Arthur	WCPI	525000	33	\$173,250.00	CI - Municipal Capacity Training and Public Outreach Source Water Protection Project	7/1/2017	6/30/2020
10/6/2017	AWD04699	University of New Hampshire	Gold,Arthur	AWPI	851581	20	\$170,316.20	CI - RII Track-2 FEC: Strengthening the Scientific Basis for Decision-Making About Dams: Multi-Scale, Coupled-Systems Research on Ecological, Social, and Economic Trade-Offs	8/1/2015	7/31/2019

## DIVISION OF RESEARCH AND ECONOMIC DEVELOPMENT

AWARD DATE	AWARD ID	SPONSOR	INVESTIGATOR	ROLE	AWARD AMT	CREDIT	PORTION AMT	TITLE	BEGIN DATE	END DATE
10/24/2017	AWD06072	RI Dept of Environ Magt	Gold,Arthur	WCPI	20000	10	\$2,000.00	CI - RI Lake and Stream Volunteer-Based Monitoring	9/18/2017	6/30/2019
11/15/2017	AWD06110	US Fish and Wildlife Service	Gold,Arthur	WCPI	99000	10	\$9,900.00	CI - Coastal Resilience Monitoring	10/23/2017	9/30/2022
2/13/2018	AWD06072	RI Dept of Environ Magt	Gold,Arthur	WCPI	50000	10	\$5,000.00	CI - RI Lake and Stream Volunteer-Based Monitoring	9/18/2017	6/30/2019
4/16/2018	AWD06572	US Fish and Wildlife Service	Gold,Arthur	AWPI	30275	10	\$3,027.50	CI - Telemetry Data to Evaluate Passage of Migratory Fish in the Pawcatuck River	3/29/2018	4/30/2020
10/24/2017	AWD06072	RI Dept of Environ Magt	Green,Linda	AWPI	20000	45	\$9,000.00	CI - RI Lake and Stream Volunteer-Based Monitoring	9/18/2017	6/30/2019
2/13/2018	AWD06072	RI Dept of Environ Magt	Green,Linda	AWPI	50000	45	\$22,500.00	CI - RI Lake and Stream Volunteer-Based Monitoring	9/18/2017	6/30/2019
10/24/2017	AWD06072	RI Dept of Environ Magt	Herron,Elizabeth	WCPI	20000	45	\$9,000.00	CI - RI Lake and Stream Volunteer-Based Monitoring	9/18/2017	6/30/2019
2/13/2018	AWD06072	RI Dept of Environ Magt	Herron,Elizabeth	WCPI	50000	45	\$22,500.00	CI - RI Lake and Stream Volunteer-Based Monitoring	9/18/2017	6/30/2019
8/3/2017	AWD06004	RI Department of Health	Joubert,Lorraine	AWPI	525000	34	\$178,500.00	CI - Municipal Capacity Training and Public Outreach Source Water Protection Project	7/1/2017	6/30/2020
1/18/2018	AWD05702	Institut Pertanian Bogor	Karraker,Nancy	WCPI	12600	10	\$1,260.00	USAID SHERA: Interdisciplinary Research Towards an Integrated Ecosystem Approach to Management of Coral Reef Fisheries and Tourism in Indonesia	12/10/2017	2/28/2018
10/12/2017	AWD06237	US Department of Agriculture	Kirby,John	AWPI	46448	100	\$46,448.00	Renewable Resources "Extension Act FY 18 (RREA)	10/1/2017	9/30/2019
8/29/2017	AWD04871	US Dept of Interior	Labash,Charles	WCPI	92070	25	\$23,017.50	CI - Resource Based Geospatial and Enterprise GIS Support to the NER of the NPS FY15	8/24/2017	9/15/2018
2/1/2018	AWD06178	University of California at Davis	Lang,Corey	AWPI	31244	100	\$31,244.00	The Effect of Electricity Rate Structures on Energy Efficiency Investments	1/1/2018	12/31/2019
2/28/2018	AWD06014	US Department of Agriculture	Lang,Corey	WCPI	499871	45	\$224,941.95	CI - Municipal Finance and Land Conservation	2/15/2018	2/14/2022
4/17/2018	AWD06067	US Department of Agriculture	Lang,Corey	AWPI	500000	80	\$400,000.00	CI - Distributional Impacts of Farm and Open Space Conservation	4/15/2018	4/14/2021

## DIVISION OF RESEARCH AND ECONOMIC DEVELOPMENT

AWARD DATE	AWARD ID	SPONSOR	INVESTIGATOR	ROLE	AWARD AMT	CREDIT	PORTION AMT	TITLE	BEGIN DATE	END DATE
10/6/2017	AWD04699	University of New Hampshire	Lowder,Kelly Addy	WCPI	851581	20	\$170,316.20	CI - RII Track-2 FEC: Strengthening the Scientific Basis for Decision-Making About Dams: Multi-Scale, Coupled-Systems Research on Ecological, Social, and Economic Trade-Offs	8/1/2015	7/31/2019
3/14/2018	AWD06496	RI Dept of Environ Magt	McGreevy Jr,Thomas	AWPI	25000	100	\$25,000.00	Brook Trout Conservation Genetics	3/1/2018	6/30/2018
8/3/2017	AWD06004	RI Department of Health	Mccann,Alyson	WCPI	525000	33	\$173,250.00	CI - Municipal Capacity Training and Public Outreach Source Water Protection Project	7/1/2017	6/30/2020
10/4/2017	AWD05308	National Institute of Health	Mccann,Alyson	WCPI	1669877	8.8	\$146,949.17	CI - STEEP - Sources, Transport, Exposure and Effects of Perfluoroalkyl Substances	7/1/2017	3/31/2018
3/30/2018	AWD05308	National Institute of Health	Mccann,Alyson	WCPI	1599436	8.8	\$140,750.36	CI - STEEP - Sources, Transport, Exposure and Effects of Perfluoroalkyl Substances	7/1/2017	3/31/2019
10/26/2017	AWD06189	Rutgers University	Menezes,Sunshine	AWPI	14956	100	\$14,956.00	Building Leadership in Science Communication: SEARCH Professional Development Workshop	9/1/2017	12/31/2017
1/18/2018	AWD05702	Institut Pertanian Bogor	Moore,Amelia	WCPI	12600	20	\$2,520.00	USAID SHERA: Interdisciplinary Research Towards an Integrated Ecosystem Approach to Management of Coral Reef Fisheries and Tourism in Indonesia	12/10/2017	2/28/2018
9/12/2017	AWD04989	University of North Carolina - CH	Opaluch,James	WCPI	238992	24	\$57,358.08	CI - Dept. of Homeland Security Coastal Resilience Center of Excellence Projects	1/1/2016	6/30/2018
12/11/2017	AWD06277	Cape Cod Commission	Opaluch,James	AWPI	75000	100	\$75,000.00	CI - Value of Cape Cod Ecosystem Services	12/1/2017	6/30/2018
4/30/2018	AWD05485	Craig H. Neilsen Foundation	Opaluch,James	AWPI	99404	40	\$39,761.60	Using Stated Preferences to Examine Disincentives to Employment for Persons with Spinal Cord Injuries	4/30/2017	4/30/2019
8/14/2017	AWD06141	US Fish and Wildlife Service	Paton,Peter	AWPI	60000	100	\$60,000.00	Technical Assistance for Digital VHF Telemetry projects in the Northeast	8/31/2017	1/31/2019
9/22/2017	AWD06011	US Dept of Interior	Paton,Peter	AWPI	166551	60	\$99,930.60	CI - Assessing Movements of Nanotagged Birds Near the Block Island Wind Farm: A Validation Study	9/22/2017	1/22/2020
1/10/2018	AWD04360	RI Dept of Environ Magt	Paton,Peter	AWPI	198977	100	\$198,977.00	CI - Rhode Island breeding Bird Atlas	4/1/2014	3/31/2019
9/15/2017	AWD05913	RI Office of Housing & Comm Development	Pradhanang,Soni	AWPI	582913	50	\$291,456.50	Assessment and Modeling of Saltwater Intrusion into Coastal Aquifers of Rhode Island	8/25/2017	8/30/2019
4/30/2018	AWD05485	Craig H. Neilsen Foundation	Roush,Susan	WCPI	99404	30	\$29,821.20	Using Stated Preferences to Examine Disincentives to Employment for Persons with Spinal Cord Injuries	4/30/2017	4/30/2019



## DIVISION OF RESEARCH AND ECONOMIC DEVELOPMENT

AWARD DATE	AWARD ID	SPONSOR	INVESTIGATOR	ROLE	AWARD AMT	CREDIT	PORTION AMT	TITLE	BEGIN DATE	END DATE
11/15/2017	AWD06110	US Fish and Wildlife Service	Still,Brett	AWPI	99000	90	\$89,100.00	CI - Coastal Resilience Monitoring	10/23/2017	9/30/2022
4/16/2018	AWD06572	US Fish and Wildlife Service	Still,Brett	WCPI	30275	90	\$27,247.50	CI - Telemetry Data to Evaluate Passage of Migratory Fish in the Pawcatuck River	3/29/2018	4/30/2020
7/24/2017	AWD06092	The Nature Conservancy	Stolt,Mark	AWPI	12000	100	\$12,000.00	Using Thin-Layer Deposition to Manage Sea-Level Rise in Tidal Marshes	3/1/2017	12/31/2017
9/28/2017	AWD06136	US Department of Agriculture	Stolt,Mark	AWPI	100000	100	\$100,000.00	Soil Carbon Stocks, Hydrology, and Hydric Soils of Northeastern Vernal Pools	9/6/2017	9/30/2019
1/18/2018	AWD05702	Institut Pertanian Bogor	Thompson,Robert	WCPI	12600	20	\$2,520.00	USAID SHERA: Interdisciplinary Research Towards an Integrated Ecosystem Approach to Management of Coral Reef Fisheries and Tourism in Indonesia	12/10/2017	2/28/2018
7/20/2017	AWD06126	National Science Foundation	Zawia,Nasser	AWPI	195333	100	\$195,333.00	GRFP 2017 - 2022 Felicia Woods, Danielle Perry	8/1/2017	7/31/2022

### CELS Academic Unit 3

**Total: \$5,043,484.80**

AWARD DATE	AWARD ID	SPONSOR	INVESTIGATOR	ROLE	AWARD AMT	CREDIT	PORTION AMT	TITLE	BEGIN DATE	END DATE
2/27/2018	AWD06516	National Science Foundation	Camberg,Jodi	AWPI	256309	100	\$256,309.00	Mechanism of Cell Division in Prokaryotes	3/1/2018	2/28/2019
3/5/2018	AWD06174	National Science Foundation	Jenkins,Bethany	AWPI	724796	100	\$724,796.00	Collaborative Research: Diatoms, Food Webs and Carbon Export - Leveraging NASA Exports to Test the Role of Diatom Physiology in the Biological Carbon Pump	3/1/2018	2/28/2022
7/21/2017	AWD04237	National Science Foundation	Kausch,Albert	AWPI	535399	100	\$535,399.00	Transforming Cereal Genomics: Tooling up for Empowered Cereal Crop Phenotyping Platforms	8/1/2015	7/31/2019
10/7/2017	AWD05839	Donald Danforth Plant Science Center	Kausch,Albert	AWPI	327483	100	\$327,483.00	Biosystems Design to Enable Next-Generation Biofuels and Bioproducts	9/15/2017	9/14/2018
12/22/2017	AWD06317	National Science Foundation	Kolbe,Jason	AWPI	75691	100	\$75,691.00	Hurricane-Induced Natural Selection Reverses the Direction of Morphological Adaptation in Anolis Lizards	12/15/2017	11/30/2018
8/4/2017	AWD04773	National Science Foundation	Lane,Christopher	AWPI	134469	100	\$134,469.00	GoLife: Bringing the Diverse Microbial Clade Stramenopila + Alveolata + Rhizaria (SAR) into a Modern Genomic Content	9/1/2015	8/31/2020

## DIVISION OF RESEARCH AND ECONOMIC DEVELOPMENT

AWARD DATE	AWARD ID	SPONSOR	INVESTIGATOR	ROLE	AWARD AMT	CREDIT	PORTION AMT	TITLE	BEGIN DATE	END DATE
2/13/2018	AWD04773	National Science Foundation	Lane, Christopher	AWPI	9612	100	\$9,612.00	GoLife: Bringing the Diverse Microbial Clade Stramenopila + Alveolata + Rhizaria (SAR) into a Modern Genomic Content	9/1/2015	8/31/2020
1/18/2018	AWD05702	Institut Pertanian Bogor	Lane, Christopher J	WCPI	12600	20	\$2,520.00	USAID SHERA: Interdisciplinary Research Towards an Integrated Ecosystem Approach to Management of Coral Reef Fisheries and Tourism in Indonesia	12/10/2017	2/28/2018
9/15/2017	AWD04885	Restore America's Estuaries	Moseman-Valtierra, Serena	AWPI	3707	100	\$3,707.00	Expanding Blue Carbon Implementation: Increasing GHG Model Application in Tidally Restricted and Restored New England Salt Marshes	1/1/2016	8/31/2018
10/3/2017	AWD06080	Colcom Foundation	Preisser, Evan	AWPI	112000	100	\$112,000.00	A Natural Approach to Hemlock Forest Restoration in Southwestern, PA	9/1/2017	8/31/2019
9/22/2017	AWD06206	US-Israel Binational Foundation	Putnam, Hollie	AWPI	30000	100	\$30,000.00	Function of Acid-Rich Proteins in Coral Biomineralization Across Diverse Climates	9/1/2017	8/31/2018
3/5/2018	AWD06264	University of Washington	Putnam, Hollie M	AWPI	93380	100	\$93,380.00	Development of Environmental Conditioning Practices to Decrease Impacts of Climate Change on Shellfish Aquaculture	1/1/2018	12/31/2018
3/15/2018	AWD06434	Bermuda Institute of Ocean Sciences	Putnam, Hollie M	AWPI	73357	100	\$73,357.00	How Resilient are Coral Reefs to Global Climate Change?	12/1/2017	11/30/2018
9/25/2017	AWD03994	Pennsylvania State University	Roberts, Alison	AWPI	108917	100	\$108,917.00	CENTER FOR LIGNOCELLULOSE STRUCTURE AND FORMATION (CLSF)	8/1/2014	7/31/2018
7/17/2017	AWD05988	National Institute of Health	Rothman, Alan	AWPI	2249648	100	\$2,249,648.00	FLAVIVIRUS INFECTIONS: PATHOGENESIS AND PREVENTION	7/1/2017	6/30/2018
9/14/2017	AWD04971	CHEROKEE NATION TECHNOLOGY SOLUTIONS	Rothman, Alan	AWPI	29594	100	\$29,594.00	Development of Immunology Research Agenda To Support the WRAIR...	8/1/2015	3/31/2018
8/24/2017	AWD05393	US Dept of Commerce NOAA	Thornber, Carol	WCPI	299434	20	\$59,886.80	Optimizing Kelp and Oyster Integrated Multi-Trophic Aquaculture: Developing a Spatially Explicit Ecosystem Model	9/1/2017	8/31/2019
3/5/2018	AWD04929	National Science Foundation	Zhang, Ying	AWPI	216716	100	\$216,716.00	CAREER: Integrated Annotation and Comparative Analysis of Metabolic Models	4/1/2016	3/31/2021

**Dean Environment Life Science**

**Total: \$2,028,284.00**

## DIVISION OF RESEARCH AND ECONOMIC DEVELOPMENT

AWARD DATE	AWARD ID	SPONSOR	INVESTIGATOR	ROLE	AWARD AMT	CREDIT	PORTION AMT	TITLE	BEGIN DATE	END DATE
10/1/2017	AWD05614	US Department of Agriculture	Kirby,John	AWPI	4351	100	\$4,351.00	FY 17 Coop Extension 3(b)3(c)	10/1/2016	9/30/2021
10/1/2017	AWD05583	US Department of Agriculture	Kirby,John	AWPI	367959	100	\$367,959.00	Hatch Regional FY 17	5/1/2017	9/30/2018
11/9/2017	AWD06292	US Department of Agriculture	Kirby,John	AWPI	1137893	100	\$1,137,893.00	FY 18 Cooperative Extension 3(b)3(c)	10/1/2017	6/30/2022
11/25/2017	AWD06297	US Department of Agriculture	Kirby,John	AWPI	518081	100	\$518,081.00	Hatch Regional FY18	10/1/2017	9/30/2018

### Env. and Nat. Res. Economics

**Total: \$340,632.40**

AWARD DATE	AWARD ID	SPONSOR	INVESTIGATOR	ROLE	AWARD AMT	CREDIT	PORTION AMT	TITLE	BEGIN DATE	END DATE
10/6/2017	AWD04699	University of New Hampshire	Guilfoos,Todd	WCPI	851581	20	\$170,316.20	CI - RII Track-2 FEC: Strengthening the Scientific Basis for Decision-Making About Dams: Multi-Scale, Coupled-Systems Research on Ecological, Social, and Economic Trade-Offs	8/1/2015	7/31/2019
10/6/2017	AWD04699	University of New Hampshire	Uchida,Emi	WCPI	851581	20	\$170,316.20	CI - RII Track-2 FEC: Strengthening the Scientific Basis for Decision-Making About Dams: Multi-Scale, Coupled-Systems Research on Ecological, Social, and Economic Trade-Offs	8/1/2015	7/31/2019

### Fish-Animal-Vet-Science

**Total: \$791,434.57**

AWARD DATE	AWARD ID	SPONSOR	INVESTIGATOR	ROLE	AWARD AMT	CREDIT	PORTION AMT	TITLE	BEGIN DATE	END DATE
10/12/2017	AWD03911	University of Connecticut Avery Point	Bengtson,David A	AWPI	24997	100	\$24,997.00	ALTERNATIVE FEEDS AND PROCESSING FOR FRESHWATER FISH	10/1/2013	2/28/2018
10/26/2017	AWD03136	GreenFins,LLC	Bradley,Terence	AWPI	735025	100	\$735,025.00	Investigation of methods for culture of bluefin tuna	9/1/2010	9/29/2020

## DIVISION OF RESEARCH AND ECONOMIC DEVELOPMENT

AWARD DATE	AWARD ID	SPONSOR	INVESTIGATOR	ROLE	AWARD AMT	CREDIT	PORTION AMT	TITLE	BEGIN DATE	END DATE
11/28/2017	AWD04129	US Department of Agriculture	Rhodes III, Richard C	WCPI	314125.75	10	\$31,412.57	CI- WEST AFRICA ANALYTICAL SUPPORT SERVICES AND EVALUATIONS FOR	3/1/2014	3/19/2019

### Natural Res. Science

**Total: \$170,000.00**

AWARD DATE	AWARD ID	SPONSOR	INVESTIGATOR	ROLE	AWARD AMT	CREDIT	PORTION AMT	TITLE	BEGIN DATE	END DATE
1/29/2018	AWD04305	RI Dept. of Transportation	Gold, Arthur J	WCPI	170000	33	\$56,100.00	CI - Storm Water Phase II Public Outreach, Education, Involvement and Participation	2/1/2014	1/31/2019
1/29/2018	AWD04305	RI Dept. of Transportation	Joubert, Lorraine B	AWPI	170000	34	\$57,800.00	CI - Storm Water Phase II Public Outreach, Education, Involvement and Participation	2/1/2014	1/31/2019
1/29/2018	AWD04305	RI Dept. of Transportation	Philo, Lisa	WCPI	170000	33	\$56,100.00	CI - Storm Water Phase II Public Outreach, Education, Involvement and Participation	2/1/2014	1/31/2019

### Plant Science

**Total: \$117,332.00**

AWARD DATE	AWARD ID	SPONSOR	INVESTIGATOR	ROLE	AWARD AMT	CREDIT	PORTION AMT	TITLE	BEGIN DATE	END DATE
10/2/2017	AWD05976	US Department of Agriculture	Casagrande, Richard	AWPI	116132	50	\$58,066.00	Extension Implementation Program for Rhode Island: Novel Pests, Innovative Approaches	9/1/2017	8/31/2018
10/2/2017	AWD05976	US Department of Agriculture	Faubert, Heather	WCPI	116132	25	\$29,033.00	Extension Implementation Program for Rhode Island: Novel Pests, Innovative Approaches	9/1/2017	8/31/2018
4/20/2018	AWD06600	US Geological Survey	Lebrun, Roger	AWPI	1200	100	\$1,200.00	BPA to Cover Overhead Costs of USGS Field Station at URI	10/1/2017	9/30/2018
10/2/2017	AWD05976	US Department of Agriculture	Tewksbury, Elizabeth	WCPI	116132	25	\$29,033.00	Extension Implementation Program for Rhode Island: Novel Pests, Innovative Approaches	9/1/2017	8/31/2018

## DIVISION OF RESEARCH AND ECONOMIC DEVELOPMENT

### Awards for Graduate School of Oceanography

From: 7/1/2017 To: 4/30/2018

Investigator Award Total: \$25,049,228.88

#### GSO Coastal Institute

**Total: \$313,507.46**

AWARD DATE	AWARD ID	SPONSOR	INVESTIGATOR	ROLE	AWARD AMT	CREDIT	PORTION AMT	TITLE	BEGIN DATE	END DATE
10/4/2017	AWD05308	National Institute of Health	Rohr,Nicole	WCPI	1669877	4.55	\$75,979.40	CI - STEEP - Sources, Transport, Exposure and Effects of Perfluoroalkyl Substances	7/1/2017	3/31/2018
3/30/2018	AWD05308	National Institute of Health	Rohr,Nicole	WCPI	1599436	4.55	\$72,774.33	CI - STEEP - Sources, Transport, Exposure and Effects of Perfluoroalkyl Substances	7/1/2017	3/31/2019
8/31/2017	AWD06176	US Dept of Interior	Swift,Judith	AWPI	16000	100	\$16,000.00	CI - CESU Host - Leadership, Coordination and Administrative Oversight for the North Atlantic Coast Cooperative	8/30/2017	12/31/2020
10/4/2017	AWD05308	National Institute of Health	Swift,Judith	WCPI	1669877	4.55	\$75,979.40	CI - STEEP - Sources, Transport, Exposure and Effects of Perfluoroalkyl Substances	7/1/2017	3/31/2018
3/30/2018	AWD05308	National Institute of Health	Swift,Judith	WCPI	1599436	4.55	\$72,774.33	CI - STEEP - Sources, Transport, Exposure and Effects of Perfluoroalkyl Substances	7/1/2017	3/31/2019

#### GSO Coastal Resources Center

**Total: \$8,436,578.63**

AWARD DATE	AWARD ID	SPONSOR	INVESTIGATOR	ROLE	AWARD AMT	CREDIT	PORTION AMT	TITLE	BEGIN DATE	END DATE
11/17/2017	AWD04536	US Agcy for International Dev.	Crawford,Brian	AWPI	1000000	50	\$500,000.00	CI - Ghana Sustainable Fisheries Management Project	10/22/2014	10/31/2019
4/24/2018	AWD04536	US Agcy for International Dev.	Crawford,Brian	AWPI	2387786	50	\$1,193,893.00	CI - Ghana Sustainable Fisheries Management Project	10/22/2014	10/31/2019
10/3/2017	AWD06155	RI Coastal Res Mgt.Council	Crean,Teresa	AWPI	189900	50	\$94,950.00	CI - HUD V BEACH SAMP	10/1/2017	1/28/2019

## DIVISION OF RESEARCH AND ECONOMIC DEVELOPMENT

AWARD DATE	AWARD ID	SPONSOR	INVESTIGATOR	ROLE	AWARD AMT	CREDIT	PORTION AMT	TITLE	BEGIN DATE	END DATE
12/22/2017	AWD05699	RI Coastal Res Mgt.Council	Crean,Teresa	AWPI	137467	32	\$43,989.44	CI - Developing the Rhode Island Coastal Environmental Risk Index to Inform State and Local Planning and Decision Making	10/1/2017	12/31/2018
10/19/2017	AWD05931	The Cadmus Group, Inc.	Kent,Karen	AWPI	1029	50	\$514.50	CI - Environment Sector Review	4/18/2017	4/30/2018
11/21/2017	AWD05531	US Agcy for International Dev.	Kent,Karen	WCPI	1825838.16	50	\$912,919.08	CI - GSO/CI Comfish Plus Project	10/1/2016	9/30/2018
11/28/2017	AWD04129	US Department of Agriculture	Kent,Karen L	AWPI	314125.75	90	\$282,713.17	CI- WEST AFRICA ANALYTICAL SUPPORT SERVICES AND EVALUATIONS FOR	3/1/2014	3/19/2019
8/25/2017	AWD05481	RI Coastal Res Mgt.Council	Mccann,Jennifer	AWPI	12148	100	\$12,148.00	CI - Update and Revision of the Metro Bay SAMP Documents and 1978 Energy Amendments	7/1/2016	7/31/2018
4/3/2018	AWD06099	International Union for Conservation of	Ricci,Glenn	AWPI	199258	50	\$99,629.00	CI - Central America Regional Coastal Biodiversity Project	2/15/2018	9/30/2018
4/5/2018	AWD06296	US Agcy for International Dev.	Ricci,Glenn	WCPI	2000000	50	\$1,000,000.00	CI - 2017 FISH RIGHT_USAID Philippines	3/30/2018	3/29/2019
11/17/2017	AWD04536	US Agcy for International Dev.	Robadue Jr,Donald	WCPI	1000000	50	\$500,000.00	CI - Ghana Sustainable Fisheries Management Project	10/22/2014	10/31/2019
4/24/2018	AWD04536	US Agcy for International Dev.	Robadue Jr,Donald	WCPI	2387786	50	\$1,193,893.00	CI - Ghana Sustainable Fisheries Management Project	10/22/2014	10/31/2019
10/10/2017	AWD06103	RI Coastal Res Mgt.Council	Rubinoff,Pamela	AWPI	20000	100	\$20,000.00	CI - To Complete the RI Beach SAMP Document and Provide Outreach and Engagement to Communicate Information	11/1/2017	1/31/2018
10/20/2017	AWD06240	Eastern Research Group	Smythe,Tiffany	AWPI	42273	100	\$42,273.00	CI - Partner Network Analysis of Agencies and Organizations that Collaborate with the National Winter Center	9/1/2017	5/31/2018
11/21/2017	AWD05531	US Agcy for International Dev.	Tobey,James	AWPI	1825838.16	50	\$912,919.08	CI - GSO/CI Comfish Plus Project	10/1/2016	9/30/2018
10/19/2017	AWD05931	The Cadmus Group, Inc.	Torell,Elin	WCPI	1029	50	\$514.50	CI - Environment Sector Review	4/18/2017	4/30/2018
12/28/2017	AWD06143	Playa Linda Beach Resort	Torell,Elin	WCPI	28980	50	\$14,490.00	Assessing the Water Quality and Underlying Factors at the Playa Linda Resort, Aruba	8/4/2017	9/30/2017
4/3/2018	AWD06099	International Union for Conservation of	Torell,Elin	WCPI	199258	50	\$99,629.00	CI - Central America Regional Coastal Biodiversity Project	2/15/2018	9/30/2018

## DIVISION OF RESEARCH AND ECONOMIC DEVELOPMENT

AWARD DATE	AWARD ID	SPONSOR	INVESTIGATOR	ROLE	AWARD AMT	CREDIT	PORTION AMT	TITLE	BEGIN DATE	END DATE
4/5/2018	AWD06296	US Agcy for International Dev.	Torell,Elin	AWPI	2000000	50	\$1,000,000.00	CI - 2017 FISH RIGHT_USAID Philippines	3/30/2018	3/29/2019
11/9/2017	AWD04495	PACT	Torell,Elin C	AWPI	117872	100	\$117,872.00	CI- FISHERIES INTEGRATION OF SOCIETY AND HABITS FISH	9/10/2014	8/9/2019
12/14/2017	AWD04495	PACT	Torell,Elin C	AWPI	394231.86	100	\$394,231.86	CI- FISHERIES INTEGRATION OF SOCIETY AND HABITS FISH	9/10/2014	8/9/2019

### GSO Dean

**Total: \$6,000.00**

AWARD DATE	AWARD ID	SPONSOR	INVESTIGATOR	ROLE	AWARD AMT	CREDIT	PORTION AMT	TITLE	BEGIN DATE	END DATE
4/24/2018	AWD06610	The Nature Conservancy	Stevick,Rebecca J	WCPI	12000	50	\$6,000.00	Effects of Estuarine Acidification on Adult Eastern Oyster Microbiomes and Health in Narragansett Bay	3/1/2018	12/31/2018

### GSO Facilities

**Total: \$327,160.90**

AWARD DATE	AWARD ID	SPONSOR	INVESTIGATOR	ROLE	AWARD AMT	CREDIT	PORTION AMT	TITLE	BEGIN DATE	END DATE
8/2/2017	AWD05041	AIR FORCE RESEARCH LABORATORY	Bao,Xueyang	WCPI	145000	30	\$43,500.00	Integrated Deterministic and Stochastic Full-Waveform Earth Models for Broadband Wave Propagation and Prediction	5/10/2016	10/31/2018
8/2/2017	AWD05041	AIR FORCE RESEARCH LABORATORY	Bao,Xueyang	WCPI	35000	30	\$10,500.00	Integrated Deterministic and Stochastic Full-Waveform Earth Models for Broadband Wave Propagation and Prediction	5/10/2016	10/31/2018
9/21/2017	AWD05041	AIR FORCE RESEARCH LABORATORY	Bao,Xueyang	WCPI	20000	30	\$6,000.00	Integrated Deterministic and Stochastic Full-Waveform Earth Models for Broadband Wave Propagation and Prediction	5/10/2016	12/31/2017
10/5/2017	AWD05041	AIR FORCE RESEARCH LABORATORY	Bao,Xueyang	WCPI	50000	30	\$15,000.00	Integrated Deterministic and Stochastic Full-Waveform Earth Models for Broadband Wave Propagation and Prediction	5/10/2016	12/31/2017
4/4/2018	AWD05041	AIR FORCE RESEARCH LABORATORY	Bao,Xueyang	WCPI	57203	30	\$17,160.90	Integrated Deterministic and Stochastic Full-Waveform Earth Models for Broadband Wave Propagation and Prediction	5/10/2016	6/30/2018

## DIVISION OF RESEARCH AND ECONOMIC DEVELOPMENT

AWARD DATE	AWARD ID	SPONSOR	INVESTIGATOR	ROLE	AWARD AMT	CREDIT	PORTION AMT	TITLE	BEGIN DATE	END DATE
		Y								
7/31/2017	AWD04094	US Dept of Commerce NOAA	Murray,Cynthia J	AWPI	235000	100	\$235,000.00	A Proposal for the Support of Continuing and New Activities of the National Sea Grant Library	3/1/2014	2/28/2018

### GSO Faculty

**Total: \$13,672,932.89**

AWARD DATE	AWARD ID	SPONSOR	INVESTIGATOR	ROLE	AWARD AMT	CREDIT	PORTION AMT	TITLE	BEGIN DATE	END DATE
7/18/2017	AWD04236	National Science Foundation	Alberts,Jonathan	AWPI	154520	50	\$77,260.00	UNIVERSIEY-NATIONAL OCEANOGRAPHIC LABORATORY SYSTEM	5/1/2014	4/30/2019
9/26/2017	AWD04236	National Science Foundation	Alberts,Jonathan	AWPI	107647	50	\$53,823.50	UNIVERSIEY-NATIONAL OCEANOGRAPHIC LABORATORY SYSTEM	5/1/2014	4/30/2019
8/22/2017	AWD05851	National Science Foundation	Beinart,Roxanne	AWPI	585618	100	\$585,618.00	The Impact of Symbiont-Larval Interactions on Species Distribution Across Southwestern Pacific Hydrothermal Vents	9/1/2018	8/31/2021
3/21/2018	AWD06299	National Science Foundation	Beinart,Roxanne	AWPI	86157	100	\$86,157.00	Collab. Research: Ecosystem Dynamics of Western Pacific Hydrothermala Vent Communities Associated with Polymetallic Sulfate Deposits	12/1/2017	11/30/2018
2/22/2018	AWD06170	National Science Foundation	Carey,Steven	WCPI	488653	25	\$122,163.25	NSFGEO-NERC Caldera-Forming Eruption-Generated Tsunamis	3/1/2018	2/28/2021
7/7/2017	AWD05119	National Science Foundation	Coleman,Dwight	WCPI	746400	15	\$111,960.00	CI - Northwest Passage Project	7/1/2016	8/31/2019
7/13/2017	AWD06077	OCEAN EXPLORATION TRUST	Coleman,Dwight	AWPI	85000	100	\$85,000.00	OET Partnership with the URI Inner Space Center to Support Systematic Ocean Exploration	7/1/2017	6/30/2018
7/21/2017	AWD06091	Naval Undersea Warfare Center	Coleman,Dwight	AWPI	20000	100	\$20,000.00	NUWC Collaboration with the URI Inner Space Center for Educational Outreach	7/22/2017	7/21/2018
8/18/2017	AWD06144	OCEAN EXPLORATION TRUST	Coleman,Dwight	AWPI	118000	100	\$118,000.00	OET Partnership with the URI Inner Space Center to Support Systematic Ocean Exploration - 2017-2018 E/V Nautilus Season	8/1/2017	12/31/2017
8/22/2017	AWD05119	National Science Foundation	Coleman,Dwight	WCPI	113754	15	\$17,063.10	CI - Northwest Passage Project	7/1/2016	8/31/2019



## DIVISION OF RESEARCH AND ECONOMIC DEVELOPMENT

AWARD DATE	AWARD ID	SPONSOR	INVESTIGATOR	ROLE	AWARD AMT	CREDIT	PORTION AMT	TITLE	BEGIN DATE	END DATE
9/1/2017	AWD06129	US Dept of Commerce NOAA	Coleman,Dwight	AWPI	300000	100	\$300,000.00	NOAA_OER Partnership with the URI Inner Space Center to Support Systematic Ocean Exploration - 2017 and 2018	9/1/2017	8/31/2019
7/28/2017	AWD03707	US Dept of Interior	Collie,Jeremy	AWPI	400000	50	\$200,000.00	CI SOUTHERN NEW ENGLAND VENTLESS TRAP SURVEY	7/3/2013	7/15/2019
8/10/2017	AWD05378	NatAeronautics & Space Admin	Cornillon,Peter	AWPI	130751	60	\$78,450.60	Improved Spatial Resolution Sea Surface Temperature Fields from AMSR-E	4/18/2016	4/17/2019
1/31/2018	AWD05505	Brown University	Cornillon,Peter	AWPI	28109	100	\$28,109.00	Beyond Spectra: Macroturbulence Observations Select High-Resolution Ocean Models	11/1/2016	8/31/2018
4/19/2018	AWD05378	NatAeronautics & Space Admin	Cornillon,Peter	AWPI	133839	60	\$80,303.40	Improved Spatial Resolution Sea Surface Temperature Fields from AMSR-E	4/18/2016	4/17/2019
1/10/2018	AWD05220	University of Southern California	D'Hondt,Steven	AWPI	113377	100	\$113,377.00	C-DEBI Postdoctoral Fellow: Discrimination of Detrital Genes from Marine Sediments	1/1/2017	12/30/2018
7/18/2017	AWD04236	National Science Foundation	Desilva,Annette	WCPI	154520	50	\$77,260.00	UNIVERSIEY-NATIONAL OCEANOGRAPHIC LABORATORY SYSTEM	5/1/2014	4/30/2019
9/26/2017	AWD04236	National Science Foundation	Desilva,Annette	WCPI	107647	50	\$53,823.50	UNIVERSIEY-NATIONAL OCEANOGRAPHIC LABORATORY SYSTEM	5/1/2014	4/30/2019
8/21/2017	AWD04733	National Science Foundation	Donohue,Kathleen	WCPI	75666	50	\$37,833.00	Collab. Research: The Oleander Project High Resolution Observations of the Dynamic Ocean Between New Jersey and Bermuda	9/15/2015	8/31/2020
4/19/2018	AWD04449	National Science Foundation	Donohue,Kathleen	WCPI	122928	40	\$49,171.20	REU SURFO	4/15/2018	3/31/2020
9/12/2017	AWD04989	University of North Carolina - CH	Ginis,Isaac	WCPI	238992	52	\$124,275.84	CI - Dept. of Homeland Security Coastal Resilience Center of Excellence Projects	1/1/2016	6/30/2018
2/22/2018	AWD06159	National Science Foundation	Ginis,Isaac	AWPI	445813	50	\$222,906.50	CI - Collaborative Research: Surface Wave Impacts on Upper Ocean Response to Tropical Cyclones	3/1/2018	2/28/2021
3/14/2018	AWD06003	KOREA INSTITUTE OF OCEAN SCIENCE & TECHN	Ginis,Isaac	AWPI	40000	100	\$40,000.00	CI - KIOST: Cooperative Process Modeling Study of Rapidly Intensifying Typhoon with Warm Eddy and Wind Drag Parameterizations	6/15/2017	12/31/2021
9/28/2017	AWD06102	National Science Foundation	Graham,Rebecca	AWPI	390647	100	\$390,647.00	Collab. Research: Tracking the Subtropical Front Across the Mid Pleistocene Transition Using Sea Surface Temperature and Nutrients	9/1/2017	8/31/2020
2/8/2018	AWD05152	Lamont-Doherty Earth Observatory	Graham,Rebecca	AWPI	1343	100	\$1,343.00	Participation in IODP Expedition #361 - Southern African Climates	2/1/2016	2/28/2019

## DIVISION OF RESEARCH AND ECONOMIC DEVELOPMENT

AWARD DATE	AWARD ID	SPONSOR	INVESTIGATOR	ROLE	AWARD AMT	CREDIT	PORTION AMT	TITLE	BEGIN DATE	END DATE
2/22/2018	AWD06159	National Science Foundation	Hara,Tetsu	WCPI	445813	50	\$222,906.50	CI - Collaborative Research: Surface Wave Impacts on Upper Ocean Response to Tropical Cyclones	3/1/2018	2/28/2021
1/5/2018	AWD05555	Brown University	Heil Jr,Clifford	AWPI	98522	90	\$88,669.80	Testing New Methods to Assess the Environmental and Flora/Faunal Responses	9/1/2016	8/31/2018
1/20/2018	AWD05555	Brown University	Heil Jr,Clifford	AWPI	66000	90	\$59,400.00	Testing New Methods to Assess the Environmental and Flora/Faunal Responses	9/1/2016	8/31/2018
8/8/2017	AWD04940	US Dept of Commerce NOAA	Kenney,Robert D	AWPI	99999	100	\$99,999.00	Maintain and Curate the North Atlantic Right Whale Sightings Database.	9/1/2015	8/31/2018
8/24/2017	AWD05393	US Dept of Commerce NOAA	Kincaid,Christopher	WCPI	299434	20	\$59,886.80	Optimizing Kelp and Oyster Integrated Multi-Trophic Aquaculture: Developing a Spatially Explicit Ecosystem Model	9/1/2017	8/31/2019
12/21/2017	AWD06314	US Army Corps of Engineers	Kincaid,Christopher	AWPI	34154.75	100	\$34,154.75	CI - Hydrodynamic Modeling and Analysis Services for the U.S. Army Corps of Engineers-New England District in Support of Edgewood Shoals, Providence, RI	12/19/2017	9/18/2018
7/28/2017	AWD03707	US Dept of Interior	King,John	WCPI	400000	50	\$200,000.00	CI SOUTHERN NEW ENGLAND VENTLESS TRAP SURVEY	7/3/2013	7/15/2019
10/27/2017	AWD06251	Town of South Kingstown	King,John	AWPI	25000	68	\$17,000.00	CI - Green Hill Pond Study - Phase 1: Studies to Support the Modeling Effort	11/1/2017	6/30/2018
1/5/2018	AWD05555	Brown University	King,John	WCPI	98522	10	\$9,852.20	Testing New Methods to Assess the Environmental and Flora/Faunal Responses	9/1/2016	8/31/2018
1/20/2018	AWD05555	Brown University	King,John	WCPI	66000	10	\$6,600.00	Testing New Methods to Assess the Environmental and Flora/Faunal Responses	9/1/2016	8/31/2018
1/29/2018	AWD06238	HDR / e2M	King,John	WCPI	3462.62	90	\$3,116.35	Supplement 2 : Underwater Acoustic Data Analysis and Measurements for the Block Island Wind Farm Construction and Operation	7/21/2017	12/31/2017
3/30/2018	AWD06366	US Dept of Interior	King,John	AWPI	694511	100	\$694,511.00	CI - M17PS00057 Electromagnetic Field Impacts on American Eel Movement and Migration from Direct Current Cables	3/1/2018	3/29/2020
9/29/2017	AWD04109	National Science Foundation	King,John W	AWPI	1535	100	\$1,535.00	Collab. Research: Sediment Pathways, Sedimentation Processes, and Structural Growth Along the Tohoku Segment of the Japan Subduction Margin: Role of Megathrust Earthquakes	8/1/2014	7/31/2017
10/2/2017	AWD06210	Environment & Climate Change Canada	Lohmann,Rainer	AWPI	6543	100	\$6,543.00	Preparation and Analysis of Passive Samplers for Organic Contaminants in Lakes and Seawater	8/15/2017	3/31/2018
10/4/2017	AWD05308	National Institute of Health	Lohmann,Rainer	AWPI	1669877	38.1	\$636,223.13	CI - STEEP - Sources, Transport, Exposure and Effects of Perfluoroalkyl Substances	7/1/2017	3/31/2018

## DIVISION OF RESEARCH AND ECONOMIC DEVELOPMENT

AWARD DATE	AWARD ID	SPONSOR	INVESTIGATOR	ROLE	AWARD AMT	CREDIT	PORTION AMT	TITLE	BEGIN DATE	END DATE
10/11/2017	AWD05865	Hudson River Foundation	Lohmann,Rainer	AWPI	265845.62	100	\$265,845.62	Contaminant Assessment and Reduction Program II	3/23/2017	3/23/2020
3/30/2018	AWD05308	National Institute of Health	Lohmann,Rainer	AWPI	1599436	38.1	\$609,385.11	CI - STEEP - Sources, Transport, Exposure and Effects of Perfluoroalkyl Substances	7/1/2017	3/31/2019
7/7/2017	AWD05119	National Science Foundation	Loose,Brice	WCPI	746400	15	\$111,960.00	CI - Northwest Passage Project	7/1/2016	8/31/2019
8/22/2017	AWD05119	National Science Foundation	Loose,Brice	WCPI	113754	15	\$17,063.10	CI - Northwest Passage Project	7/1/2016	8/31/2019
4/19/2018	AWD04449	National Science Foundation	Maranda,Lucie	AWPI	122928	40	\$49,171.20	REU SURFO	4/15/2018	3/31/2020
3/6/2018	AWD06430	National Science Foundation	McMahon,Kelton	AWPI	139795	100	\$139,795.00	Collaborative Research: Investigating Holocene Shifts in the Diets and Paleohistory of Antarctic Krill Predators	11/1/2017	7/31/2019
10/4/2017	AWD05970	NatAeronautics & Space Admin	Menden-Deuer,Susanne	AWPI	100000	50	\$50,000.00	CI - Quantifying Plankton Predation Rates and Effects on Primary Production, Phytoplankton Community Composition, Size Spectra and Potential for Export	9/19/2017	9/18/2020
10/6/2017	AWD05482	Woods Hole Oce Institution	Menden-Deuer,Susanne	AWPI	87905	50	\$43,952.50	CI - LTER: Linking Pelagic Community Structure with Ecosystem Dynamics and Production Regimes on the Changing Northeast US Shelf	9/1/2017	8/31/2022
11/3/2017	AWD05970	NatAeronautics & Space Admin	Menden-Deuer,Susanne	AWPI	261550	50	\$130,775.00	CI - Quantifying Plankton Predation Rates and Effects on Primary Production, Phytoplankton Community Composition, Size Spectra and Potential for Export	9/19/2017	9/18/2020
4/1/2018	AWD06163	National Science Foundation	Mouw,Colleen	AWPI	406223	100	\$406,223.00	Continuity and Enhancement of MPOWR	4/1/2018	3/31/2022
12/20/2017	AWD05590	Massachusetts Institute of Technology	Mouw,Colleen B	AWPI	96463	100	\$96,463.00	Assessing Ecosystem Vulnerability to Climate Change through Optics, Imagery and Models	8/25/2016	8/24/2019
3/5/2018	AWD06399	US Dept of Commerce NOAA	Murray,Cynthia	AWPI	285188	100	\$285,188.00	A Proposal for the Support of Continuing and New Activities of the National Sea Grant Library	3/1/2018	2/29/2020
8/17/2017	AWD05945	US of Office of Naval Research	Omand,Melissa	AWPI	40151	100	\$40,151.00	Penetrative Flux, Barrier Layer Collapse, and ISO Feedbacks	8/1/2017	7/31/2019
10/18/2017	AWD05955	Skidmore College	Omand,Melissa	AWPI	58492.89	100	\$58,492.89	Linking Sinking Particle Chemistry and Biology with Changes in the Magnitude and Efficiency of Carbon Export into the Deep Ocean	9/8/2017	9/7/2018
11/21/2017	AWD05955	Skidmore College	Omand,Melissa	AWPI	38949.11	100	\$38,949.11	Linking Sinking Particle Chemistry and Biology with Changes in the Magnitude and Efficiency of Carbon Export into the Deep Ocean	9/8/2017	9/7/2018

## DIVISION OF RESEARCH AND ECONOMIC DEVELOPMENT

AWARD DATE	AWARD ID	SPONSOR	INVESTIGATOR	ROLE	AWARD AMT	CREDIT	PORTION AMT	TITLE	BEGIN DATE	END DATE
11/30/2017	AWD05944	University of Washington	Omand,Melissa	AWPI	15342	100	\$15,342.00	AMPLIFY: Autonomous Monitoring of Export Pathways: Lagrangian Insight from Femtoseconds to Years	9/8/2017	9/7/2018
12/19/2017	AWD05322	Woods Hole Oce Institution	Omand,Melissa	AWPI	20537	100	\$20,537.00	Modeling Studies for EXPORTS in a Dynamic Ocean Environment	8/25/2016	8/24/2018
10/17/2017	AWD05354	NERACOOS	Oviatt,Candace	WCPI	60000	50	\$30,000.00	CI - Data Transfer to NERACOOS from NBFSMN Stations Operated by URI/GSO	6/1/2016	5/31/2018
3/12/2018	AWD03084	RI Dept of Environ Magt	Oviatt,Candace A	AWPI	560262	100	\$560,262.00	Technical Support of the Fixed-Site Monitoring Network in Narragansett	11/1/2010	12/31/2019
7/5/2017	AWD05946	National Science Foundation	Palter,Jaime	AWPI	290962	100	\$290,962.00	Analysis Phase of the Lagrangian Isopycnal Dispersion Experiment (AP-LIDEX)	9/1/2017	8/30/2020
7/31/2017	AWD04800	National Science Foundation	Pockalny,Robert	WCPI	45178	33	\$14,908.74	STEM+C: Computing-Based Science Investigations	9/15/2015	8/31/2018
10/27/2017	AWD06251	Town of South Kingstown	Pockalny,Robert	WCPI	25000	32	\$8,000.00	CI - Green Hill Pond Study - Phase 1: Studies to Support the Modeling Effort	11/1/2017	6/30/2018
3/26/2018	AWD06547	Alfred P. Sloan Foundation	Pockalny,Robert	AWPI	600000	95	\$570,000.00	The Road to 2019 and Beyond	4/1/2018	12/31/2019
4/2/2018	AWD04800	National Science Foundation	Pockalny,Robert	WCPI	49530	33	\$16,344.90	STEM+C: Computing-Based Science Investigations	9/15/2015	8/31/2018
3/26/2018	AWD06547	Alfred P. Sloan Foundation	Pratt,Catherine A	WCPI	600000	5	\$30,000.00	The Road to 2019 and Beyond	4/1/2018	12/31/2019
8/10/2017	AWD05378	NatAeronautics & Space Admin	Puggioni,Gavino	WCPI	130751	40	\$52,300.40	Improved Spatial Resolution Sea Surface Temperature Fields from AMSR-E	4/18/2016	4/17/2019
4/19/2018	AWD05378	NatAeronautics & Space Admin	Puggioni,Gavino	WCPI	133839	40	\$53,535.60	Improved Spatial Resolution Sea Surface Temperature Fields from AMSR-E	4/18/2016	4/17/2019
7/24/2017	AWD06093	US Dept of Commerce NOAA	Roman,Christopher	AWPI	58214	100	\$58,214.00	CI Use of a Lagrangian Camera Float in Association with Surveys to Examine Benthic Habitats and Associated Fish: Operational Test to Improving Survey-Based Estimates of Abundance	7/19/2017	8/31/2018
9/1/2017	AWD05752	US Dept of Commerce NOAA	Roman,Christopher	AWPI	290621	100	\$290,621.00	Integration of Acoustic Echosounding into the Wire Flyer Profiling Vehicle to Investigate Scattering Layer Distribution and Oxygen Coupling	9/1/2017	8/31/2019
8/21/2017	AWD04733	National Science Foundation	Rossby,Hans T	AWPI	75666	50	\$37,833.00	Collab. Research: The Oleander Project High Resolution Observations of the Dynamic Ocean Between New Jersey and Bermuda	9/15/2015	8/31/2020

## DIVISION OF RESEARCH AND ECONOMIC DEVELOPMENT

AWARD DATE	AWARD ID	SPONSOR	INVESTIGATOR	ROLE	AWARD AMT	CREDIT	PORTION AMT	TITLE	BEGIN DATE	END DATE
9/21/2017	AWD05500	National Science Foundation	Rothstein,Lewis	WCPI	4535519	25	\$1,133,879.75	RII Track-1: Enhancing Rhode Island's Coastal Environment to Enable Growth in a Blue Economy	8/1/2017	7/31/2022
10/4/2017	AWD05970	NatAeronautics & Space Admin	Rynearson,Tatiana	WCPI	100000	50	\$50,000.00	CI - Quantifying Plankton Predation Rates and Effects on Primary Production, Phytoplankton Community Composition, Size Spectra and Potential for Export	9/19/2017	9/18/2020
10/6/2017	AWD05482	Woods Hole Oce Institution	Rynearson,Tatiana	WCPI	87905	50	\$43,952.50	CI - LTER: Linking Pelagic Community Structure with Ecosystem Dynamics and Production Regimes on the Changing Northeast US Shelf	9/1/2017	8/31/2022
11/3/2017	AWD05970	NatAeronautics & Space Admin	Rynearson,Tatiana	WCPI	261550	50	\$130,775.00	CI - Quantifying Plankton Predation Rates and Effects on Primary Production, Phytoplankton Community Composition, Size Spectra and Potential for Export	9/19/2017	9/18/2020
7/7/2017	AWD05119	National Science Foundation	Scowcroft,Gail	AWPI	746400	70	\$522,480.00	CI - Northwest Passage Project	7/1/2016	8/31/2019
7/18/2017	AWD05136	US of Office of Naval Research	Scowcroft,Gail	AWPI	97545	100	\$97,545.00	Discovery of Sound in the Sea	1/1/2016	12/31/2017
8/22/2017	AWD05119	National Science Foundation	Scowcroft,Gail	AWPI	113754	70	\$79,627.80	CI - Northwest Passage Project	7/1/2016	8/31/2019
12/5/2017	AWD06157	US of Office of Naval Research	Scowcroft,Gail	AWPI	10000	100	\$10,000.00	Discovery of Sound in the Sea 2018-2019	1/1/2018	12/31/2019
2/1/2018	AWD06157	US of Office of Naval Research	Scowcroft,Gail	AWPI	117000	100	\$117,000.00	Discovery of Sound in the Sea 2018-2019	1/1/2018	12/31/2019
2/13/2018	AWD06157	US of Office of Naval Research	Scowcroft,Gail	AWPI	106308	100	\$106,308.00	Discovery of Sound in the Sea 2018-2019	1/1/2018	12/31/2019
3/8/2018	AWD06157	US of Office of Naval Research	Scowcroft,Gail	AWPI	115618	100	\$115,618.00	Discovery of Sound in the Sea 2018-2019	1/1/2018	12/31/2019
8/2/2017	AWD05041	AIR FORCE RESEARCH LABORATORY	Shen,Yang	AWPI	35000	70	\$24,500.00	Integrated Deterministic and Stochastic Full-Waveform Earth Models for Broadband Wave Propagation and Prediction	5/10/2016	10/31/2018
8/2/2017	AWD05041	AIR FORCE RESEARCH LABORATORY	Shen,Yang	AWPI	145000	70	\$101,500.00	Integrated Deterministic and Stochastic Full-Waveform Earth Models for Broadband Wave Propagation and Prediction	5/10/2016	10/31/2018
9/21/2017	AWD05616	AIR FORCE RESEARCH LABORATORY	Shen,Yang	AWPI	78000	95	\$74,100.00	Pinpointing Seismic Events with Body Waves Scattered by Topography Near the Source Region	5/31/2017	8/31/2019
9/21/2017	AWD05041	AIR FORCE RESEARCH LABORATORY	Shen,Yang	AWPI	20000	70	\$14,000.00	Integrated Deterministic and Stochastic Full-Waveform Earth Models for Broadband Wave Propagation and Prediction	5/10/2016	12/31/2017

## DIVISION OF RESEARCH AND ECONOMIC DEVELOPMENT

AWARD DATE	AWARD ID	SPONSOR	INVESTIGATOR	ROLE	AWARD AMT	CREDIT	PORTION AMT	TITLE	BEGIN DATE	END DATE
10/5/2017	AWD05041	AIR FORCE RESEARCH LABORATORY	Shen, Yang	AWPI	50000	70	\$35,000.00	Integrated Deterministic and Stochastic Full-Waveform Earth Models for Broadband Wave Propagation and Prediction	5/10/2016	12/31/2017
3/14/2018	AWD05616	AIR FORCE RESEARCH LABORATORY	Shen, Yang	AWPI	55000	95	\$52,250.00	Pinpointing Seismic Events with Body Waves Scattered by Topography Near the Source Region	5/31/2017	8/31/2019
4/4/2018	AWD05041	AIR FORCE RESEARCH LABORATORY	Shen, Yang	AWPI	57203	70	\$40,042.10	Integrated Deterministic and Stochastic Full-Waveform Earth Models for Broadband Wave Propagation and Prediction	5/10/2016	6/30/2018
4/19/2018	AWD04449	National Science Foundation	Smith, David	WCPI	122928	20	\$24,585.60	REU SURFO	4/15/2018	3/31/2020
12/28/2017	AWD06143	Playa Linda Beach Resort	Spivack, Arthur	WCPI	28980	50	\$14,490.00	Assessing the Water Quality and Underlying Factors at the Playa Linda Resort, Aruba	8/4/2017	9/30/2017
7/7/2017	AWD06137	Commonwealth of Massachusetts	Stoffel, Heather	AWPI	114220	100	\$114,220.00	CI- EXPANSION OF THE NARRAGANSETT BAY FIXED SITE YEAR 2	7/1/2017	6/30/2018
10/17/2017	AWD05354	NERACOOS	Stoffel, Heather	AWPI	60000	50	\$30,000.00	CI - Data Transfer to NERACOOS from NBFSMN Stations Operated by URI/GSO	6/1/2016	5/31/2018
10/25/2017	AWD05001	Rutgers University	Ullman, David	AWPI	5287.55	100	\$5,287.55	CONTINUATION OF PREVIOUS PO 2384074	6/1/2016	5/31/2018
1/31/2018	AWD03297	Rutgers University	Ullman, David S	AWPI	15000	100	\$15,000.00	MARACOOS: Mid Atlantic Regional Association Coastal Ocean Observing System	6/1/2011	5/31/2018
9/21/2017	AWD05616	AIR FORCE RESEARCH LABORATORY	Wang, Nian	WCPI	78000	5	\$3,900.00	Pinpointing Seismic Events with Body Waves Scattered by Topography Near the Source Region	5/31/2017	8/31/2019
3/14/2018	AWD05616	AIR FORCE RESEARCH LABORATORY	Wang, Nian	WCPI	55000	5	\$2,750.00	Pinpointing Seismic Events with Body Waves Scattered by Topography Near the Source Region	5/31/2017	8/31/2019
8/18/2017	AWD06015	University of Cape Town	Watts, D Randolph	AWPI	5832	100	\$5,832.00	Release Rearing Kits for Agulhas-South Atlantic Studies	5/1/2017	4/30/2020
8/18/2017	AWD05949	KOREA INSTITUTE OF OCEAN SCIENCE & TECHN	Watts, D Randolph	AWPI	43000	100	\$43,000.00	Kuroshio Observations by Korean Institute of Ocean Science (KIOST): 1 PIES, CM-ready	4/1/2017	3/31/2020
8/18/2017	AWD05950	KOREA INSTITUTE OF OCEAN SCIENCE & TECHN	Watts, D Randolph	AWPI	19537	100	\$19,537.00	Kuroshio Observations by Korean Institute of Ocean Science and Technology (KIOST): Current Meter Option	4/1/2017	3/31/2020

## DIVISION OF RESEARCH AND ECONOMIC DEVELOPMENT

AWARD DATE	AWARD ID	SPONSOR	INVESTIGATOR	ROLE	AWARD AMT	CREDIT	PORTION AMT	TITLE	BEGIN DATE	END DATE
8/18/2017	AWD05951	KOREA INSTITUTE OF OCEAN SCIENCE & TECHN	Watts,D Randolph	AWPI	62537	100	\$62,537.00	Keep Studies by Korean Institute of Ocean Science and Technology (KIOST): 1 combined CPIES	4/1/2017	3/31/2020
9/14/2017	AWD05746	SEISMIC MARINE TECHNOLOGY LIMITED	Watts,D Randolph	AWPI	1450	100	\$1,450.00	Observing the North Equatorial Current Using 2 PIES	12/20/2016	12/19/2019
10/4/2017	AWD06216	University of Gothenberg	Watts,D Randolph	AWPI	17300	100	\$17,300.00	Antarctic Glacier-Base Studies Using Four TPOPs	9/27/2017	8/30/2020
10/25/2017	AWD06252	University of Washington	Watts,D Randolph	AWPI	7553	100	\$7,553.00	Repair and Upgrade 1 PIES for University of Washington	10/15/2017	9/30/2020
10/27/2017	AWD06256	University of Miami	Watts,D Randolph	AWPI	57800	100	\$57,800.00	Upgrade 5 URI CPIES for University of Miami Deployment Across Agulhas Current	8/1/2017	7/31/2018
11/17/2017	AWD06293	GEOMAR HELMHOLTZ CENTRE FOR OCEAN	Watts,D Randolph	AWPI	540	100	\$540.00	PIES Accessories - Partial Release Kits for GEOMAR	11/14/2017	11/13/2019
1/11/2018	AWD05019	Massachusetts Institute of Technology	Watts,D Randolph	AWPI	9052	100	\$9,052.00	Investigating flow features near abrupt topography in the Mariana Basin: PIES for the FLEAT Program	10/1/2015	9/30/2018
2/22/2018	AWD06446	UNIVERSITY OF BREMEN-DEU	Watts,D Randolph	AWPI	11814	100	\$11,814.00	Bremen University North Atlantic Circulation Studies - Refurbish and Upgrade PIES SN075	1/1/2018	12/31/2020
4/17/2018	AWD06340	FAPESP	Watts,D Randolph	AWPI	258936	100	\$258,936.00	South Atlantic Meridional Overturning Circulation (SAMOC), using CPIES and PDS	2/1/2018	12/20/2020
4/18/2018	AWD06539	KOREA INSTITUTE OF OCEAN SCIENCE & TECHN	Watts,D Randolph	AWPI	10000	100	\$10,000.00	Kuroshio Extension Technical Consulting	2/1/2018	10/31/2018
8/7/2017	AWD05476	National Science Foundation	Wei,Meng	AWPI	601553	100	\$601,553.00	Career: Integration of Rate-and-State Friction and Viscoelastic Flow to Model Earthquake Cycles on an Oceanic Transform Fault	8/1/2017	7/31/2022

**GSO Marine Office**  
**Total: \$1,128,565.00**

## DIVISION OF RESEARCH AND ECONOMIC DEVELOPMENT

AWARD DATE	AWARD ID	SPONSOR	INVESTIGATOR	ROLE	AWARD AMT	CREDIT	PORTION AMT	TITLE	BEGIN DATE	END DATE
10/3/2017	AWD06214	John Hopkins University	Glennon,Thomas	AWPI	163845	100	\$163,845.00	Johns Hopkins / APL Charter of Support Vessel to Support Sea Test October 2017	10/3/2017	10/13/2017
12/14/2017	AWD06084	Fisheries and Oceans Canada DFO	Glennon,Thomas	AWPI	819720	100	\$819,720.00	Vessel and Crew to Support the Fisheries and Oceans Canada (DFO), Maritimes Region, Ocean Monitoring Program - Fall 2017	10/18/2017	12/31/2017
2/12/2018	AWD06484	Woods Hole Oce Institution	Glennon,Thomas	AWPI	45000	100	\$45,000.00	WHOI Science Mission Aboard RV Endeavor - East Coast Oceanographic Consortium	3/1/2018	2/28/2019
2/12/2018	AWD06485	University of New Hampshire	Glennon,Thomas	AWPI	100000	100	\$100,000.00	UNH Science Mission Aboard RV Endeavor - East Coast Oceanographic Consortium	3/1/2018	2/28/2019

### GSO Rhode Island Sea Grant

**Total: \$1,164,484.00**

AWARD DATE	AWARD ID	SPONSOR	INVESTIGATOR	ROLE	AWARD AMT	CREDIT	PORTION AMT	TITLE	BEGIN DATE	END DATE
2/8/2018	AWD06263	US Dept of Commerce NOAA	Nixon,Dennis	AWPI	376600	100	\$376,600.00	RI Sea Grant 2018-2022 Omnibus Program Administration Program	2/1/2018	1/31/2022
3/7/2018	AWD05940	DOC/NOAA Coastal Services Center	Nixon,Dennis	AWPI	61500	100	\$61,500.00	2018 Knauss Marine Policy Fellow KATELYN SZURA	2/1/2018	2/28/2019
4/4/2018	AWD06263	US Dept of Commerce NOAA	Nixon,Dennis	AWPI	641200	100	\$641,200.00	RI Sea Grant 2018-2022 Omnibus Program Administration Program	2/1/2018	1/31/2022
8/17/2017	AWD03971	US Dept of Commerce NOAA	Nixon,Dennis W	AWPI	25000	100	\$25,000.00	RHODE ISLAND SEA GRANT 2014-2018 OMNIBUS	4/1/2017	1/31/2019
10/5/2017	AWD03971	US Dept of Commerce NOAA	Nixon,Dennis W	AWPI	60184	100	\$60,184.00	RHODE ISLAND SEA GRANT 2014-2018 OMNIBUS	4/1/2017	1/31/2019



# DIVISION OF RESEARCH AND ECONOMIC DEVELOPMENT

## Awards for College of Health Sciences

From: 7/1/2017 To: 4/30/2018

Investigator Award Total: \$4,153,545.39

### Cancer Prevention Res. Ctr

**Total: \$663,207.93**

AWARD DATE	AWARD ID	SPONSOR	INVESTIGATOR	ROLE	AWARD AMT	CREDIT	PORTION AMT	TITLE	BEGIN DATE	END DATE
9/27/2017	AWD05074	Brown University	Laforge,Robert	AWPI	89485	100	\$89,485.00	Motivational and Contextual Influences on Patterns of Simultaneous Alcohol and Marijuana Use: A Daily Assessment Study	5/1/2017	4/30/2018
10/5/2017	AWD04804	RI Dept of Behavioral Healthcare, Development	Paiva,Andrea	AWPI	81270	100	\$81,270.00	BHDDH School Survey	7/1/2017	6/30/2018
9/12/2017	AWD04989	University of North Carolina - CH	Prochaska,James O	WCPI	238992	24	\$57,358.08	CI - Dept. of Homeland Security Coastal Resilience Center of Excellence Projects	1/1/2016	6/30/2018
8/16/2017	AWD05816	National Science Foundation	Redding,Colleen	WCPI	99439	15	\$14,915.85	SCC-Planning: Smart and Connected Residential Water Quality Community	8/15/2017	7/31/2018
9/13/2017	AWD05091	Yale University	Redding,Colleen	AWPI	125133	100	\$125,133.00	Enhancing Engagement in Advance Care Planning	9/27/2016	6/30/2018
10/2/2017	AWD05088	Brown University	Spillane,Nichea	AWPI	13417	100	\$13,417.00	Positive Psychotherapy for Smoking Cessation Enhanced with Text Messaging: A Randomized Controlled Trial	7/1/2017	6/30/2018
9/7/2017	AWD04811	Kent Center	Stein,Lynda	AWPI	12500	100	\$12,500.00	Healthy Transitions - The Kent Center	10/1/2015	9/29/2018
9/15/2017	AWD04809	RI Dept of Behavioral Healthcare, Development	Stein,Lynda	AWPI	124060	100	\$124,060.00	Healthy Transitions - BHDDH	1/1/2015	9/29/2018
10/12/2017	AWD04810	Community Care Alliance	Stein,Lynda	AWPI	12500	100	\$12,500.00	Healthy Transitions - Community Care Alliance	10/1/2015	9/29/2018
10/13/2017	AWD05396	The Miriam Hospital	Stein,Lynda	AWPI	12569	100	\$12,569.00	Evaluating the Implementation and Impact of a Novel Medication-Assisted Treatment Program in a Unified Jail and Prison System	9/1/2017	8/31/2018
4/26/2018	AWD06530	RI Dept of Behavioral Healthcare, Development	Stein,Lynda	AWPI	120000	100	\$120,000.00	RI Youth Treatment Implementation	5/1/2018	4/30/2019

## DIVISION OF RESEARCH AND ECONOMIC DEVELOPMENT

### Food Science And Nutrition

**Total: \$5,344.00**

AWARD DATE	AWARD ID	SPONSOR	INVESTIGATOR	ROLE	AWARD AMT	CREDIT	PORTION AMT	TITLE	BEGIN DATE	END DATE
10/13/2017	AWD04558	US Department of Agriculture	Kirby, John D	AWPI	5344	100	\$5,344.00	FY2015 3B3C Formula Funds	10/1/2014	9/30/2019

### Human Development & Family Stu

**Total: \$96,345.00**

AWARD DATE	AWARD ID	SPONSOR	INVESTIGATOR	ROLE	AWARD AMT	CREDIT	PORTION AMT	TITLE	BEGIN DATE	END DATE
10/2/2017	AWD05483	Rhode Island College	Mccurdy, Karen	AWPI	19458	100	\$19,458.00	Recruitment and Retention of Early Childhood Professionals in Early Intervention Programs	7/1/2016	9/30/2017
1/31/2018	AWD06220	Rhode Island College	Mccurdy, Karen	AWPI	26887	100	\$26,887.00	Recruitment and Retention of Early Childhood Professionals in Early Intervention Programs	9/30/2017	10/1/2018
9/27/2017	AWD06016	The Spencer Foundation	Vaccaro, Annemarie	PI	50000	100	\$50,000.00	IIHI - Making Disability Visible in Higher Education Research: Addressing Quantitative, Qualitative, and Theoretical Limitations	11/1/2017	10/31/2018

### Nutrition & Food Sciences

**Total: \$2,247,015.53**

AWARD DATE	AWARD ID	SPONSOR	INVESTIGATOR	ROLE	AWARD AMT	CREDIT	PORTION AMT	TITLE	BEGIN DATE	END DATE
10/12/2017	AWD06221	US Department of Agriculture	Kirby, John	AWPI	385645	100	\$385,645.00	EFNEP FY 2018	10/1/2017	9/30/2022
8/3/2017	AWD05509	RI Dept of Human Services	Sebelia, Linda	AWPI	359470	100	\$359,470.00	RI SNAP-Ed 2017	10/1/2014	9/30/2017
3/20/2018	AWD06134	RI Dept of Human Services	Sebelia, Linda	AWPI	1334026	100	\$1,334,026.00	IIHI - RI SNAP Ed	10/1/2017	9/30/2018

## DIVISION OF RESEARCH AND ECONOMIC DEVELOPMENT

AWARD DATE	AWARD ID	SPONSOR	INVESTIGATOR	ROLE	AWARD AMT	CREDIT	PORTION AMT	TITLE	BEGIN DATE	END DATE
10/17/2017	AWD05987	Brown University	Tovar,Alison	AWPI	68808	100	\$68,808.00	Improving nutrition and physical activity supplement for student	6/1/2017	5/31/2018
1/23/2018	AWD05787	Brown University	Tovar,Alison	AWPI	43071	100	\$43,071.00	Improving Nutrition and Physical Activity Environments In Home -Based Child Care	8/1/2014	5/31/2018
7/28/2017	AWD06116	Produce for Better Health Foundation	Vadivelloo,Maya	AWPI	5995.53	100	\$5,995.53	PBH Grant Transfer: Manipulating the Sensory Variety of Fruits and Vegetables to Increase Their Intake	10/15/2015	6/30/2018
8/28/2017	AWD05956	Foundation for Food & Agriculture Resear	Vadivelloo,Maya	AWPI	100000	50	\$50,000.00	IIHI - Targeted Incentives, Food Purchases and Health Outcomes	9/1/2017	8/31/2018

### Physical Therapy

**Total: \$716,118.00**

AWARD DATE	AWARD ID	SPONSOR	INVESTIGATOR	ROLE	AWARD AMT	CREDIT	PORTION AMT	TITLE	BEGIN DATE	END DATE
7/10/2017	AWD06060	RI Dept of Behavioral Healthcare, Develop	Hulme,Janice	AWPI	179811	100	\$179,811.00	URI/BHDDH Collaborative Agreement for Physical Therapy Services	7/1/2017	6/30/2018
11/1/2017	AWD06274	RI Commerce Corporation	Konin,Jeffrey	AWPI	50000	100	\$50,000.00	The Effects of a Wearable Exercise Device on Musculoskeletal Characteristics	7/4/2017	7/4/2018
10/2/2017	AWD06211	National Institute of Health	Roush,Susan	AWPI	207633	100	\$207,633.00	RIDDC FFY 2017	10/1/2016	9/30/2018
10/2/2017	AWD06211	National Institute of Health	Roush,Susan	AWPI	185600	100	\$185,600.00	RIDDC FFY 2017	10/1/2016	9/30/2018
10/2/2017	AWD06211	National Institute of Health	Roush,Susan	AWPI	93074	100	\$93,074.00	RIDDC FFY 2017	10/1/2016	9/30/2018

### Psychology

**Total: \$425,514.93**

## DIVISION OF RESEARCH AND ECONOMIC DEVELOPMENT

AWARD DATE	AWARD ID	SPONSOR	INVESTIGATOR	ROLE	AWARD AMT	CREDIT	PORTION AMT	TITLE	BEGIN DATE	END DATE
7/2/2017	AWD05909	RI Dept of Behavioral Healthcare,Development	Florin,Paul	AWPI	142114	50	\$71,057.00	IIHI - Evaluation of Statewide Rhode Island Prevention Infrastructure Innovation	7/26/2017	6/30/2018
8/11/2017	AWD03834	RI Dept of Behavioral Healthcare,Development	Florin,Paul R	AWPI	83270	100	\$83,270.00	STATE LEVEL EVALUATION BUDGET FOR RI PARTNERSHIP FOR SUCCESS	9/30/2015	9/30/2017
8/11/2017	AWD03835	RI Dept of Behavioral Healthcare,Development	Florin,Paul R	AWPI	182464	100	\$182,464.00	LOCAL LEVEL EVALUATION OF PARTNERSHIPS FOR SUCCESS	9/30/2013	9/30/2017
7/2/2017	AWD05909	RI Dept of Behavioral Healthcare,Development	Skierkowski,Dorothy	WCPI	142114	50	\$71,057.00	IIHI - Evaluation of Statewide Rhode Island Prevention Infrastructure Innovation	7/26/2017	6/30/2018
4/26/2018	AWD05965	National Institute of Health	Weiss,Nicole H	AWPI	17666.93	100	\$17,666.93	IIHI - PTSD, Negative and Positive Emotion Dysfunction and Substance USE in IPV Victims	7/1/2017	5/31/2018

## DIVISION OF RESEARCH AND ECONOMIC DEVELOPMENT

### Awards for College of Nursing

From: 7/1/2017 To: 4/30/2018

Investigator Award Total: \$153,644.56

#### Dean Nursing

**Total: \$12,469.56**

AWARD DATE	AWARD ID	SPONSOR	INVESTIGATOR	ROLE	AWARD AMT	CREDIT	PORTION AMT	TITLE	BEGIN DATE	END DATE
11/30/2017	AWD05244	R.I. Department of Elderly Affairs	Burbank,Patricia	AWPI	12469.56	100	\$12,469.56	Building Long Term Sustainability in State Lifespan	9/1/2015	8/31/2016

#### Nursing Instruction

**Total: \$141,175.00**

AWARD DATE	AWARD ID	SPONSOR	INVESTIGATOR	ROLE	AWARD AMT	CREDIT	PORTION AMT	TITLE	BEGIN DATE	END DATE
12/29/2017	AWD06312	R.I. Department of Elderly Affairs	Burbank,Patricia	AWPI	30000	100	\$30,000.00	Lifespan Respite Program	9/1/2017	8/31/2018
11/6/2017	AWD05977	American Nurses Foundation	Cotton,Brandi	AWPI	4120	100	\$4,120.00	Dyadic Influences on Methadone Maintenance Treatment	9/1/2017	5/31/2018
12/21/2017	AWD04052	RI Foundation	Dunphy,Lynne M	AWPI	25000	100	\$25,000.00	Developing RI Ph.D. Nurse Leaders to Transform Health Care	8/31/2014	8/31/2018
2/6/2018	AWD06209	Brown University	Wolfe,Barbara	PI	82055	100	\$82,055.00	Southern Rhode Island Area Health Education Center (sriAHEC)	9/1/2017	8/31/2018

## DIVISION OF RESEARCH AND ECONOMIC DEVELOPMENT

### Awards for Academic Health Collaborative

From: 7/1/2017 To: 4/30/2018

Investigator Award Total: \$1,445,600.67

#### IIHI Administration

**Total: \$1,445,600.67**

AWARD DATE	AWARD ID	SPONSOR	INVESTIGATOR	ROLE	AWARD AMT	CREDIT	PORTION AMT	TITLE	BEGIN DATE	END DATE
9/20/2017	AWD05570	State of Rhode Island	Blissmer,Bryan	AWPI	133931.67	100	\$133,931.67	State Innovation Model (SIM) Test Grant Evaluation	7/1/2017	6/30/2018
11/7/2017	AWD05411	Integra Community Care Network	Blissmer,Bryan	AWPI	66498	100	\$66,498.00	The INTEGRA Accountable Health Communities Partnership	5/1/2017	4/30/2018
12/12/2017	AWD06213	Exec.Office of Health and Human Services	Blissmer,Bryan	AWPI	267595	100	\$267,595.00	IIHI - Infrastructure - DSHP/SA/EOHHS	11/1/2017	6/30/2018
12/20/2017	AWD06213	Exec.Office of Health and Human Services	Blissmer,Bryan	AWPI	252921	100	\$252,921.00	IIHI - Infrastructure - DSHP/SA/EOHHS	11/1/2017	6/30/2018
1/1/2018	AWD06460	Exec.Office of Health and Human Services	Blissmer,Bryan	AWPI	724655	100	\$724,655.00	IIHI - URI ISA ACCOUNTABLE INTITIES TECHNICAL ASSISTANCE	11/1/2017	12/31/2018

# DIVISION OF RESEARCH AND ECONOMIC DEVELOPMENT

## Awards for College of Pharmacy

From: 7/1/2017 To: 4/30/2018

Investigator Award Total: \$6,048,236.85

### Biomedical & Pharm. Sciences

**Total: \$5,554,285.08**

AWARD DATE	AWARD ID	SPONSOR	INVESTIGATOR	ROLE	AWARD AMT	CREDIT	PORTION AMT	TITLE	BEGIN DATE	END DATE
9/14/2017	AWD04688	National Institute of Health	Chen,Xinyuan	AWPI	\$245,645.00	100	\$245,645.00	Delivery and Adjuvantation of Nicotine Vaccine by Laser Illumination	6/15/2015	5/31/2018
8/22/2017	AWD05630	National Institute of Health	Cho,Bongsup	AWPI	\$209,154.00	100	\$209,154.00	Arylamine DNA Adduct Recognition in Eukaryotic Nucleotide Excision Repair	9/1/2017	8/31/2018
10/4/2017	AWD05308	National Institute of Health	Cho,Bongsup	WCPI	\$1,669,877.00	8.8	\$146,949.17	CI - STEEP - Sources, Transport, Exposure and Effects of Perfluoroalkyl Substances	7/1/2017	3/31/2018
3/30/2018	AWD05308	National Institute of Health	Cho,Bongsup	WCPI	\$1,599,436.00	8.8	\$140,750.36	CI - STEEP - Sources, Transport, Exposure and Effects of Perfluoroalkyl Substances	7/1/2017	3/31/2019
1/10/2018	AWD05930	National Institute of Health	Deng,Ruitang	AWPI	\$344,755.00	100	\$344,755.00	Interplay of Bile Acid and Estrogen Signaling	1/1/2018	12/31/2018
8/25/2017	AWD05933	Brown University	Ghonem,Nisanne	AWPI	\$216,400.00	100	\$216,400.00	An In Vivo Study of Treprostinil, a Prostacyclin Analog, in the Prevention of Ischemia-Reperfusion Injury to the Kidney	7/1/2017	6/30/2018
8/4/2017	AWD04927	Moleculera Labs	Kovoor,Abraham	AWPI	\$11,000.00	100	\$11,000.00	Preparation of D2 Dopamine Receptor-Expressing SF9 Cell Membranes	8/1/2015	7/31/2018
7/28/2017	AWD05820	National Institute of Health	Li,Deyu	AWPI	\$410,961.00	100	\$410,961.00	Inhibitory Effect of Nitric Oxide on DNA Repair Enzymes	8/1/2017	7/31/2020
12/22/2017	AWD06316	National Institute of Health	Li,Deyu	AWPI	\$460,426.00	100	\$460,426.00	Mutational Spectra of Bulky DNA Lesions	1/1/2018	12/31/2018
10/4/2017	AWD06215	National Institute of Health	Quinlan,Katharina	AWPI	\$318,023.00	100	\$318,023.00	RYAN INST - Impairment of Spinal Development in Cerebral Palsy	9/1/2017	6/30/2018
2/26/2018	AWD06350	US Department of Agriculture	Seeram,Navindra	AWPI	\$150,000.00	100	\$150,000.00	Quality, Shelf-Life Stability, and Authenticity of Commercial Maple Water Products	3/1/2018	2/28/2019

## DIVISION OF RESEARCH AND ECONOMIC DEVELOPMENT

AWARD DATE	AWARD ID	SPONSOR	INVESTIGATOR	ROLE	AWARD AMT	CREDIT	PORTION AMT	TITLE	BEGIN DATE	END DATE
4/2/2018	AWD02922	Federation of Quebec Maple Syrup Produce	Seeram,Navindra P	AWPI	\$40,000.00	100	\$40,000.00	Routine analyses of samples to identify factors which contribute to variability of maple syrup (URI coded project E)	7/1/2010	12/31/2020
8/18/2017	AWD05893	National Institute of Health	Shaikh,Zahir	AWPI	\$371,916.00	100	\$371,916.00	Rhode Island IDeA Network for Biomedical Research Excellence	5/1/2017	4/30/2018
10/4/2017	AWD05308	National Institute of Health	Slitt,Angela	WCPI	\$1,669,877.00	23.5	\$392,421.09	CI - STEEP - Sources, Transport, Exposure and Effects of Perfluoroalkyl Substances	7/1/2017	3/31/2018
3/30/2018	AWD05308	National Institute of Health	Slitt,Angela	WCPI	\$1,599,436.00	23.5	\$375,867.46	CI - STEEP - Sources, Transport, Exposure and Effects of Perfluoroalkyl Substances	7/1/2017	3/31/2019
10/31/2017	AWD06223	Yale University	Van Nostrand,William	AWPI	\$696,078.00	100	\$696,078.00	RyanInst. - Characterizing the Glymphatic Peri-Vascular Connectome and its Disruption in AD	11/1/2016	6/30/2021
1/8/2018	AWD06342	National Institute of Health	Van Nostrand,William	AWPI	\$314,675.00	100	\$314,675.00	IIHI - Modeling Exercise Regiments: Prevention and Amelioration of Amyloid Pathologies and Cognitive Impairment	1/1/2018	5/31/2019
1/22/2018	AWD06222	National Institute of Health	Van Nostrand,William	AWPI	\$325,514.00	100	\$325,514.00	RyanInst - Understanding the Origins of Amyloid Deposition in Cerebral Amyloid Angiopathy	10/1/2017	3/31/2018
1/26/2018	AWD06302	National Institute of Health	Van Nostrand,William	AWPI	\$383,750.00	100	\$383,750.00	RI - The Role of Copper in Cerebral Amyloid Angiopathy	10/1/2017	4/30/2018

### Crime Lab

**Total: \$24,374.75**

AWARD DATE	AWARD ID	SPONSOR	INVESTIGATOR	ROLE	AWARD AMT	CREDIT	PORTION AMT	TITLE	BEGIN DATE	END DATE
4/4/2018	AWD06542	RI Department of Public Safety	Hilliard,Dennis	AWPI	\$24,374.75	100	\$24,374.75	FU 2017 Cover dell Crime Laboratory Improvement Program	1/1/2018	12/31/2018

### Pharmacy Practice

**Total: \$269,577.02**



## DIVISION OF RESEARCH AND ECONOMIC DEVELOPMENT

AWARD DATE	AWARD ID	SPONSOR	INVESTIGATOR	ROLE	AWARD AMT	CREDIT	PORTION AMT	TITLE	BEGIN DATE	END DATE
9/25/2017	AWD04875	Boston University Medical Center	Bratberg, Jeffrey	AWPI	\$12,106.00	100	\$12,106.00	Advancing Patient Safety Implementation through Pharmacy - Based Opioid Medication Use Research	8/1/2015	6/30/2018
8/6/2017	AWD05563	Harvard University	Buchanan, Ashley	AWPI	\$37,029.00	100	\$37,029.00	New Methods for the Design and Evaluation of Large HIV Prevention Interventions	9/1/2016	5/31/2018
12/20/2017	AWD05551	Harvard University	Buchanan, Ashley	AWPI	\$37,752.00	100	\$37,752.00	A Comprehensive Translational Science Analytics Toolkit for the Global Health Agenda Today	9/1/2016	7/31/2018
9/14/2017	AWD05935	Arkansas Children's Research Institute	Caffrey, Aisling	AWPI	\$15,683.00	100	\$15,683.00	IIHI - Patient and Stakeholder Alliance for SATB2-Associated Syndrome	6/1/2017	5/31/2018
8/11/2017	AWD06139	VERASTEM, INC.	Kogut, Stephen	AWPI	\$49,887.00	50	\$24,943.50	Pharmacoeconomics of Chronic Lymphocytic Leukemia: Focus on Novel Oral Targeted Therapies	6/1/2017	5/1/2018
10/19/2017	AWD06239	Ocean State Research Institute, Inc	Laplante, Kerry	AWPI	\$23,113.00	100	\$23,113.00	Acute Bacterial Skin and Skin Structure Infections (ABSSI) among Veterans Treated with Vancomycin: Treatment Epidemiology after Hospital Discharge	8/1/2017	12/31/2017
4/5/2018	AWD05561	RI Department of Corrections	Marcoux, Rita	AWPI	\$81,640.02	50	\$40,820.01	Pharmacy Program Oversight/Utilization Review	1/1/2017	12/31/2018
4/5/2018	AWD05561	RI Department of Corrections	Szumita, Lisa B	WCPI	\$81,640.02	50	\$40,820.01	Pharmacy Program Oversight/Utilization Review	1/1/2017	12/31/2018
10/31/2017	AWD04515	Brown University	Temkin, Cynthia	AWPI	\$12,367.00	100	\$12,367.00	The Rhode Island Center for Clinical and Transitional Science	7/1/2016	4/30/2018
8/11/2017	AWD06139	VERASTEM, INC.	Vyas, Ami	WCPI	\$49,887.00	25	\$12,471.75	Pharmacoeconomics of Chronic Lymphocytic Leukemia: Focus on Novel Oral Targeted Therapies	6/1/2017	5/1/2018
8/11/2017	AWD06139	VERASTEM, INC.	Wen, Xuerong	WCPI	\$49,887.00	25	\$12,471.75	Pharmacoeconomics of Chronic Lymphocytic Leukemia: Focus on Novel Oral Targeted Therapies	6/1/2017	5/1/2018

### Ryan Institute Neuroscience

**Total: \$200,000.00**

AWARD DATE	AWARD ID	SPONSOR	INVESTIGATOR	ROLE	AWARD AMT	CREDIT	PORTION AMT	TITLE	BEGIN DATE	END DATE
9/26/2017	AWD06207	RI Commerce Corporation	Brackee, Gordon	AWPI	\$50,000.00	100	\$50,000.00	Ryan Institute - In Vivo Imaging and Behavioral Pharmacology Support for Alzheimer's Drug Development	1/1/2017	12/31/2017

## DIVISION OF RESEARCH AND ECONOMIC DEVELOPMENT

AWARD DATE	AWARD ID	SPONSOR	INVESTIGATOR	ROLE	AWARD AMT	CREDIT	PORTION AMT	TITLE	BEGIN DATE	END DATE
2/21/2018	AWD05733	Cure Alzheimer's Fund	Grammas, Paula	AWPI	\$150,000.00	100	\$150,000.00	Cerebrovascular dysfunction in AD:targeting the mechanisms of vascular activation	3/1/2018	2/28/2019

# DIVISION OF RESEARCH AND ECONOMIC DEVELOPMENT

## Awards for University Library

From: 7/1/2017 To: 4/30/2018

Investigator Award Total: \$2,527,168.00

### DataSpark

**Total: \$2,527,168.00**

AWARD DATE	AWARD ID	SPONSOR	INVESTIGATOR	ROLE	AWARD AMT	CREDIT	PORTION AMT	TITLE	BEGIN DATE	END DATE
1/17/2018	AWD05993	RI Dept of Labor & Training	Pierson, Kimberly	AWPI	1700000	100	\$1,700,000.00	Library, DataSpark, WDQI 6, 2017	7/1/2017	6/30/2020
12/8/2017	AWD06298	RI Department of Education	Swindal, Megan	AWPI	200000	100	\$200,000.00	Library, DataSpark, RIDE InfoWorks, 2018	7/1/2017	6/30/2018
12/28/2017	AWD06349	United Way of Rhode Island	Swindal, Megan	AWPI	15000	100	\$15,000.00	Library, DataSpark, United Way HSLI, 2018	7/1/2017	2/28/2018
1/10/2018	AWD06370	United Way of Rhode Island	Swindal, Megan	AWPI	30000	100	\$30,000.00	Library, Data Spark, UW Yr 2 Data Coaching, 2018	8/16/2017	6/30/2018
1/25/2018	AWD06318	RI Department of Education	Swindal, Megan	AWPI	152938	100	\$152,938.00	Library, DataSpark, RIDE Sandbox, 2018	7/1/2017	6/30/2018
2/19/2018	AWD06287	RI Department of Health	Swindal, Megan	AWPI	123625	100	\$123,625.00	RIDOH Data Utilization 2018	12/1/2017	11/30/2018
2/19/2018	AWD06500	RI Department of Health	Swindal, Megan	AWPI	9925	100	\$9,925.00	RIDOH Data Utilization 2018	12/1/2017	11/30/2018
3/15/2018	AWD06459	Exec. Office of Health and Human Services	Swindal, Megan	AWPI	295680	100	\$295,680.00	Library, DataSpark, United Way HSLI, 2018	3/1/2018	6/30/2019

# DIVISION OF RESEARCH AND ECONOMIC DEVELOPMENT

## Awards for Research & Economic Development

From: 7/1/2017 To: 4/30/2018

Investigator Award Total: \$619,099.00

### Research

**Total: \$484,299.00**

AWARD DATE	AWARD ID	SPONSOR	INVESTIGATOR	ROLE	AWARD AMT	CREDIT	PORTION AMT	TITLE	BEGIN DATE	END DATE
8/10/2017	AWD05557	US Small Business Admin	Huttenhower,Edward	AWPI	484299	100	\$484,299.00	Rhode Island Small Business Development Center - 2017	1/1/2017	12/31/2017

### Small Business Development Ctr

**Total: \$126,000.00**

AWARD DATE	AWARD ID	SPONSOR	INVESTIGATOR	ROLE	AWARD AMT	CREDIT	PORTION AMT	TITLE	BEGIN DATE	END DATE
2/2/2018	AWD06150	US Small Business Admin	Huttenhower,Edward	AWPI	126000	100	\$126,000.00	Rhode Island Small Business Development Center - 2018	1/1/2018	6/30/2018

### Transportation Center

**Total: \$8,800.00**

AWARD DATE	AWARD ID	SPONSOR	INVESTIGATOR	ROLE	AWARD AMT	CREDIT	PORTION AMT	TITLE	BEGIN DATE	END DATE
8/11/2017	AWD06117	Electrification Coalition	Lucht,Wendy	AWPI	8800	100	\$8,800.00	Drive Electric Orlando	7/1/2017	12/31/2017