

2017

# Division of Research and Economic Development Monthly Report for December 2017

URI Division of Research and Economic Development

Follow this and additional works at: [http://digitalcommons.uri.edu/researchecondev\\_reports](http://digitalcommons.uri.edu/researchecondev_reports)

---

## Recommended Citation

URI Division of Research and Economic Development, "Division of Research and Economic Development Monthly Report for December 2017" (2017). *Reports (Research and Economic Development)*. Paper 102.  
[http://digitalcommons.uri.edu/researchecondev\\_reports/102](http://digitalcommons.uri.edu/researchecondev_reports/102)[http://digitalcommons.uri.edu/researchecondev\\_reports/102](http://digitalcommons.uri.edu/researchecondev_reports/102)

This Periodical is brought to you for free and open access by the Division of Research and Economic Development at DigitalCommons@URI. It has been accepted for inclusion in Reports (Research and Economic Development) by an authorized administrator of DigitalCommons@URI. For more information, please contact [digitalcommons@etal.uri.edu](mailto:digitalcommons@etal.uri.edu).



THE  
UNIVERSITY  
OF RHODE ISLAND

Division of Research and Economic Development

## December FY18 Monthly Awards Report

THINK BIG  WE DO™



Table 1. FY17 Awards through the Division of Research and Economic Development including awards through URIRF as of December FY18

Month	FY14				FY15			
	Number		Amount Awarded		Number		Amount Awarded	
	Count	Cum. Ct.	Amount	Cum. Amt.	Count	Cum. Ct.	Amount	Cum. Amt.
July	39	39	\$4,139,716.95	\$4,139,716.95	56	56	\$9,320,986.14	\$9,320,986.14
August	50	89	\$10,961,168.50	\$15,100,885.45	44	100	\$12,358,916.05	\$21,679,902.19
September	44	133	\$13,495,443.00	\$28,596,328.45	54	154	\$9,752,946.59	\$31,432,848.78
October	30	163	\$4,306,251.98	\$32,902,580.43	40	194	\$10,524,688.48	\$41,957,537.26
November	16	179	\$3,117,236.86	\$36,019,817.29	33	227	\$4,659,283.60	\$46,616,820.86
December	29	208	\$2,366,159.91	\$38,385,977.20	23	250	\$4,928,269.75	\$51,545,090.61
January	30	238	\$3,780,011.56	\$42,165,988.76	22	272	\$2,793,419.35	\$54,338,509.96
February	30	268	\$2,076,599.68	\$44,242,588.44	32	304	\$3,760,154.75	\$58,098,664.71
March	29	297	\$4,062,350.95	\$48,304,939.39	26	330	\$4,144,522.17	\$62,243,186.88
April	28	325	\$4,427,811.05	\$52,732,750.44	33	363	\$10,761,617.18	\$73,004,804.06
May	37	362	\$3,839,315.32	\$56,572,065.76	33	396	\$5,594,823.50	\$78,599,627.56
June	34	396	\$12,209,552.37	\$68,781,618.13	30	426	\$5,826,873.64	\$84,426,501.20
<b>Total</b>	<b>396</b>	<b>396</b>	<b>\$68,781,618.13</b>	<b>\$68,781,618.13</b>	<b>426</b>	<b>426</b>	<b>\$84,426,501.20</b>	<b>\$84,426,501.20</b>

Month	FY16				FY17				FY18			
	Number		Amount Awarded		Number		Amount Awarded		Number		Amount Awarded	
	Count	Cum. Ct.	Amount	Cum. Amt.	Count	Cum. Ct.	Amount	Cum. Amt.	Count	Cum. Ct.	Amount	Cum. Amt.
July	37	37	\$8,259,292.12	\$8,259,292.12	37	37	\$4,339,118.27	\$4,339,118.27	45	45	\$8,131,838.53	\$8,131,838.53
August	50	87	\$11,559,380.86	\$19,818,672.98	57	94	\$8,539,822.58	\$12,878,940.85	51	96	\$7,651,420.00	\$15,783,258.53
September	47	134	\$15,419,750.42	\$35,238,423.40	32	126	\$4,627,289.24	\$17,506,230.09	43	139	\$11,945,424.00	\$27,728,682.53
October	29	163	\$5,505,924.11	\$40,744,347.51	44	170	\$10,495,024.28	\$28,001,254.37	61	200	\$9,145,698.84	\$36,874,381.37
November	20	183	\$1,782,290.00	\$42,526,637.51	29	199	\$1,964,267.24	\$29,965,521.61	18	218	\$5,860,731.57	\$42,735,112.94
December	23	206	\$5,157,323.68	\$47,683,961.19	21	220	\$2,559,332.00	\$32,524,853.61	30	248	\$4,431,753.61	\$47,166,866.55
January	18	224	\$2,301,715.00	\$49,985,676.19	28	248	\$4,267,124.83	\$36,791,978.44				
February	36	260	\$7,503,614.82	\$57,489,291.01	33	281	\$5,870,893.25	\$42,662,871.69				
March	28	288	\$3,653,643.41	\$61,142,934.42	37	318	\$5,531,665.34	\$48,194,537.03				
April	30	318	\$7,850,054.40	\$68,992,988.82	19	337	\$7,231,667.00	\$55,426,204.03				
May	38	356	\$8,421,608.95	\$77,414,597.77	33	370	\$3,555,246.01	\$58,981,450.04				
June	37	393	\$8,166,192.24	\$85,580,790.01	62	432	\$13,550,894.81	\$72,532,344.85				
<b>Total</b>	<b>393</b>	<b>393</b>	<b>\$85,580,790.01</b>	<b>\$85,580,790.01</b>	<b>432</b>	<b>432</b>	<b>\$72,532,344.85</b>	<b>\$72,532,344.85</b>	<b>248</b>	<b>248</b>	<b>\$47,166,866.55</b>	<b>\$47,166,866.55</b>

Fig 1a. FY17 Cumulative totals of numbers of awards through the Division of Research & Economic Development including awards through URIRF as of December FY18

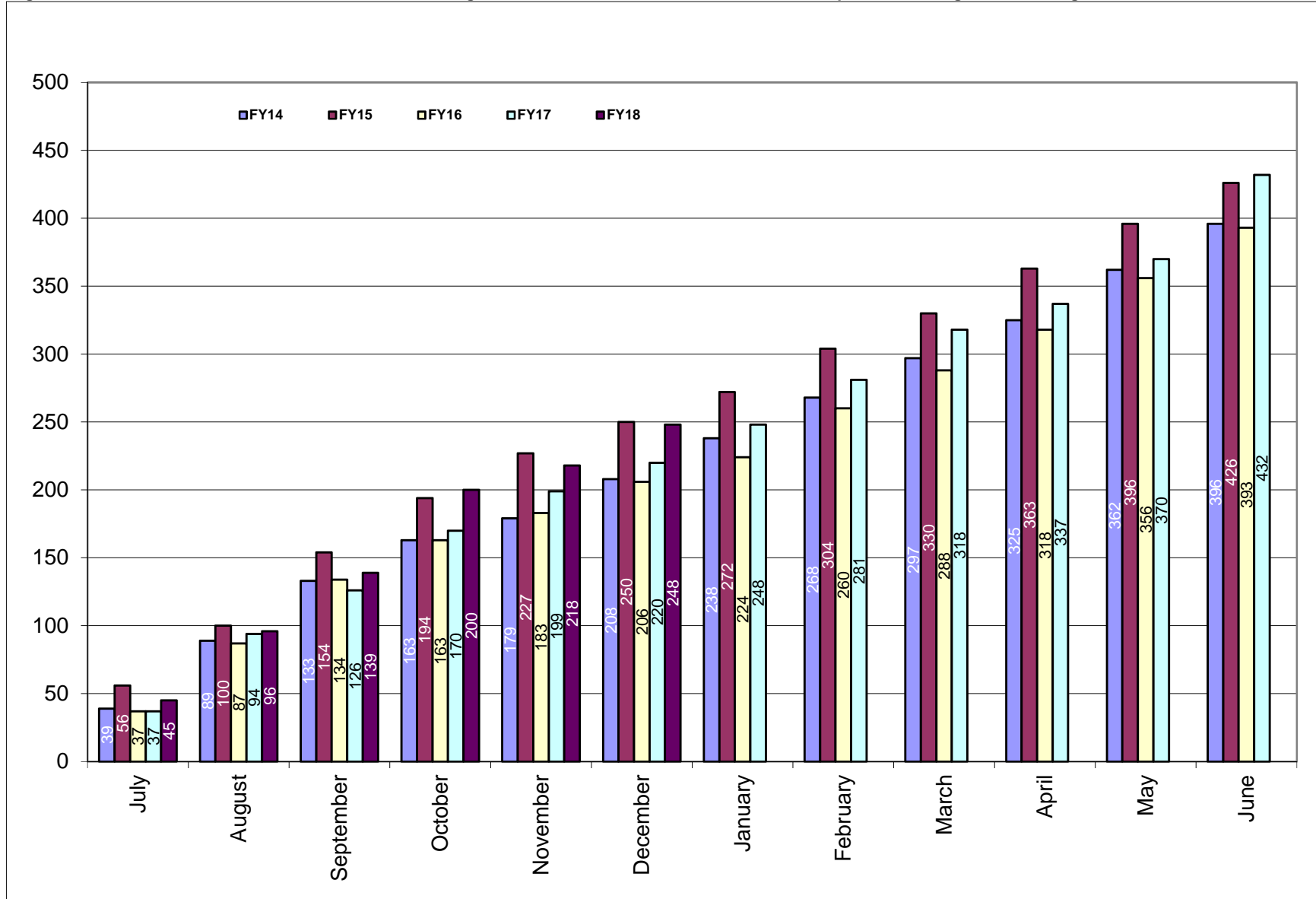
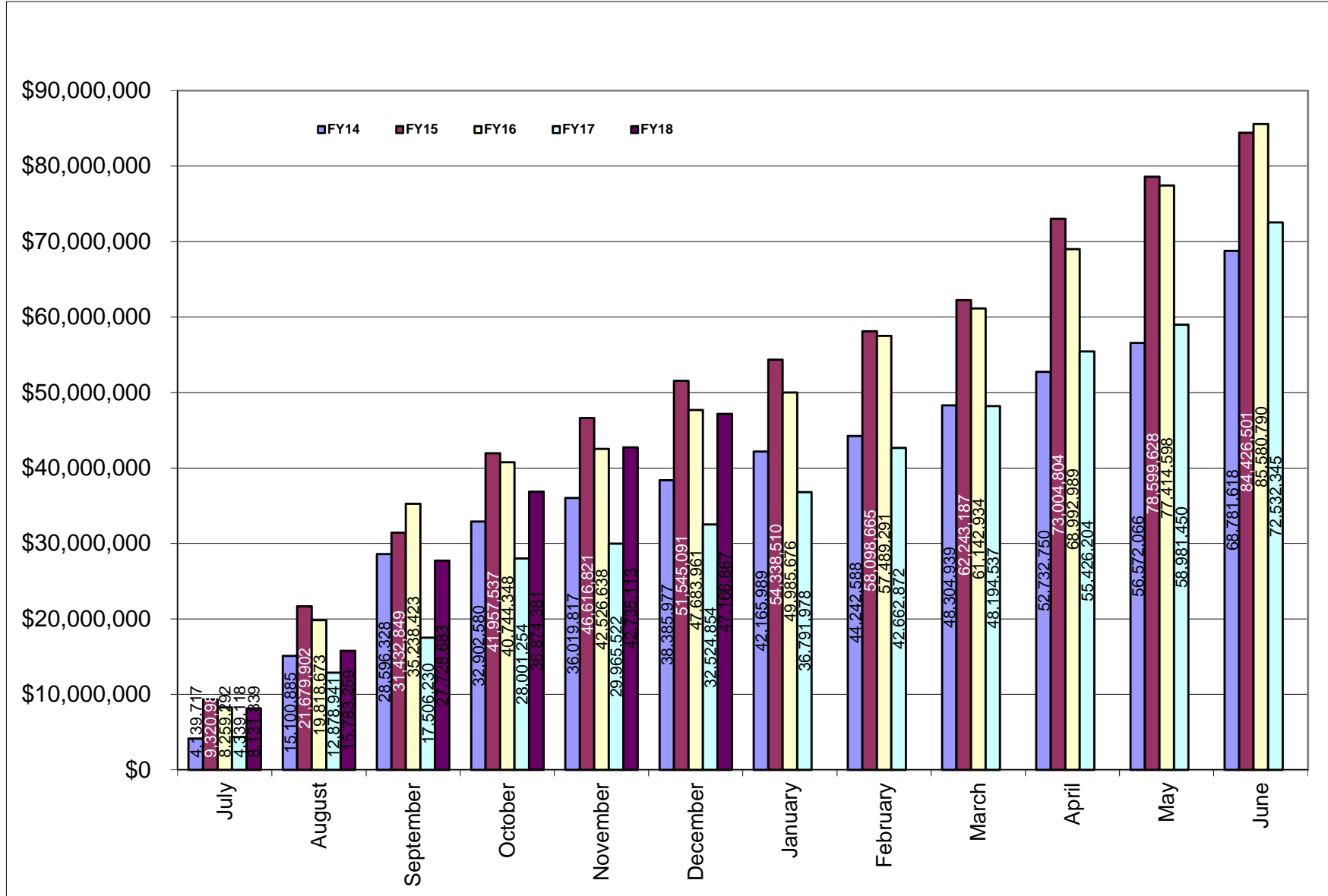


Fig 1b. Cumulative totals of awards received through the Division of Research & Economic Development including awards through URIRF as of December FY18



**Table 2. Summary of awards received by administrative and academic units FY14 through December FY18 YTD**

<b>Administrative</b>	<b><u>FY14</u></b>	<b><u>FY15</u></b>	<b><u>FY16</u></b>	<b><u>FY17</u></b>	<b><u>FY18</u></b>	<b><u>Totals</u></b>
PRESIDENT'S OFFICE	\$0.00	\$0.00	\$0.00	\$0.00	\$0.00	\$0.00
PROVOST	\$66,522.90	\$333,665.52	\$347,327.90	\$0.00	\$0.00	\$747,516.32
VP, ADMINISTRATION	\$934,258.37	\$12,176.00	\$0.00	\$24,923.00	\$0.00	\$971,357.37
VP, RESEARCH & ECON DEV	\$4,177,835.54	\$5,781,973.31	\$5,019,163.69	\$4,130,075.00	\$1,650,256.00	\$20,759,303.54
VP, STUDENT AFFAIRS	\$261,091.70	\$267,287.19	\$124,215.60	\$0.00	\$0.00	\$652,594.49
<b>Academic</b>						
ARTS & SCIENCES	\$4,245,460.88	\$6,966,881.21	\$5,807,093.79	\$4,796,076.54	\$2,198,661.05	\$24,014,173.47
BUSINESS ADMINISTRATION	\$72,332.00	\$255,549.40	\$367,079.80	\$0.00	\$50,000.00	\$744,961.20
COLLEGE OF EDU & PROF STUDIES	\$2,077,426.92	\$1,832,419.00	\$2,191,844.01	\$415,936.50	\$455,710.80	
CONTINUING EDUCATION	\$199,568.70	\$148,136.04	\$118,215.60	NA	\$0.00	\$465,920.34
ENGINEERING	\$3,487,206.08	\$6,367,872.33	\$8,940,566.89	\$4,693,118.34	\$10,046,542.93	\$33,535,306.57
ENVIRONMENT & LIFE SCIENCES	\$16,144,544.99	\$19,928,754.89	\$16,957,974.00	\$12,246,360.67	\$11,814,206.62	\$77,091,841.17
GRADUATE SCHOOL	\$0.00	\$0.00	\$0.00	\$0.00	\$0.00	\$0.00
HUMAN SCIENCE & SERVICES	\$899,862.05	\$858,426.62	\$1,147,091.45	NA	\$0.00	\$2,905,380.12
HEALTH SCIENCES	\$4,771,423.00	\$4,989,606.93	\$4,915,700.32	\$4,961,859.39	\$2,611,894.46	\$22,250,484.10
ACADEMIC HEALTH COLLABORATIVE				\$1,408,568.66	\$690,138.00	\$2,098,706.66
NURSING	\$1,298,944.60	\$682,403.25	\$1,807,216.30	\$1,512,030.27	\$71,589.56	\$5,372,183.98
OCEANOGRAPHY	\$22,981,661.90	\$25,356,628.31	\$31,099,397.41	\$30,870,365.04	\$13,645,956.87	\$123,954,009.53
PHARMACY	\$6,963,909.80	\$10,644,721.20	\$6,549,687.65	\$6,356,777.70	\$3,716,910.26	\$34,232,006.61
UNIVERSITY COLLEGE	\$199,568.70	\$0.00	\$188,215.60	\$0.00	\$0.00	\$387,784.30
UNIVERSITY LIBRARY				\$1,116,253.68	\$215,000.00	\$1,331,253.68
<b>Totals</b>	<b>\$68,781,618.13</b>	<b>\$84,426,501.20</b>	<b>\$85,580,790.01</b>	<b>\$72,532,344.79</b>	<b>\$47,166,866.55</b>	<b>\$351,514,783.45</b>

NA - NOT APPLICABLE (Unit does not exist)

CANCER PREV RESEARCH CTR - Prior to FY17 was reported in Arts and Sciences

CENTER FOR HUMAN SERVICES - Prior to FY17 was reported in Human Science and Services

EDUCATION - Prior to FY17 was reported in Human Science and Services

HUMAN DEV/COUNSEL/FAM STUDIES - Prior to FY17 was reported in Human Science and Services

NUTRITION AND FOOD SCIENCES - Prior to FY17 was reported in Environment and Life Sciences

PHYSICAL THERAPY - Prior to FY17 was reported in Human Science and Services

PSYCHOLOGY - Prior to FY17 was reported in Arts and Sciences

**Table 2a. Awards received by departments within colleges FY14 through December FY18 YTD**

<u>College</u>	<u>FY14</u>	<u>FY15</u>	<u>FY16</u>	<u>FY17</u>	<u>FY18 YTD</u>	<u>Totals</u>
<b>Arts and Sciences</b>	<b>\$4,245,460.88</b>	<b>\$6,966,881.21</b>	<b>\$5,807,093.79</b>	<b>\$4,796,076.54</b>	<b>\$2,198,661.05</b>	<b>\$24,014,173.47</b>
ARCHEOLOGY AND APPLIED HISTORY	\$0.00	\$4,898.00	\$0.00	\$0.00	\$0.00	\$4,898.00
ART	\$0.00	\$0.00	\$0.00	\$0.00	\$0.00	\$0.00
CHEMISTRY	\$1,860,329.55	\$4,959,626.45	\$3,407,452.84	\$2,369,873.50	\$1,653,699.00	\$14,250,981.34
COMMUNICATION STUDIES	\$0.00	\$0.00	\$0.00	\$69,146.00	\$0.00	\$69,146.00
COMPUTER SCIENCE/STATISTICS	\$159,245.55	\$50,250.00	\$826,544.98	\$491,657.00	\$69,120.00	\$1,596,817.53
DEAN'S OFFICE	\$22,302.98	\$23,478.36	\$24,924.04	\$0.00	\$0.00	\$70,705.38
ECONOMICS	\$0.00	\$6,250.00	\$0.00	\$0.00	\$0.00	\$6,250.00
ENGLISH		\$475,980.00	\$0.00	\$25,000.00	\$0.00	\$500,980.00
FEINSTEIN HUNGER CTR(DEAN'S OFFICE)	\$797,488.00	\$555,216.00	\$570,233.00	\$555,216.00	\$0.00	\$2,478,153.00
HISTORY	\$248,515.00	\$60,480.00	\$1,982.00	\$211,921.00	\$0.00	\$522,898.00
INTERNATIONAL ENGINEERING PROG	\$0.00	\$0.00	\$0.00	\$0.00	\$0.00	\$0.00
LANGUAGES	\$419,870.00	\$377,995.80	\$15,000.00	\$761,273.04	\$406,490.00	\$1,980,628.84
LIBRARY AND INFORMATION STUDIES	\$50,000.00	\$0.00	\$0.00	\$0.00	\$0.00	\$50,000.00
MATHEMATICS	\$108,832.55	\$0.00	\$0.00	\$0.00	\$32,648.20	\$141,480.75
PHILOSOPHY				\$2,000.00	\$0.00	\$2,000.00
PHYSICS	\$504,034.50	\$219,162.00	\$237,748.00	\$217,875.00	\$21,788.00	\$1,200,607.50
POLITICAL SCIENCE		\$162,083.60	\$517,787.30	\$31,502.00	\$14,915.85	\$726,288.75
SOCIOLOGY/ANTHROPOLOGY	\$30,118.75	\$0.00	\$110,426.00	\$50,613.00	\$0.00	\$191,157.75
THEATRE	\$0.00	\$0.00	\$0.00	\$0.00	\$0.00	\$0.00
GENDER AND WOMEN'S STUDIES	\$0.00	\$0.00	\$0.00	\$0.00	\$0.00	\$0.00
WRITING AND RHETORIC	\$44,724.00	\$71,461.00	\$94,995.63	\$10,000.00	\$0.00	\$221,180.63
<b>Business Administration</b>	<b>\$72,332.00</b>	<b>\$255,549.40</b>	<b>\$367,079.80</b>	<b>\$0.00</b>	<b>\$50,000.00</b>	<b>\$744,961.20</b>
ACCOUNTING	\$0.00	\$0.00	\$0.00	\$0.00	\$0.00	\$0.00
DEAN'S OFFICE	\$0.00	\$234,712.00	\$331,719.40	\$0.00	\$50,000.00	\$616,431.40
FACULTY - INSTRUCTION	\$72,332.00	\$20,837.40	\$35,360.40	\$0.00	\$0.00	\$128,529.80
MANAGEMENT	\$0.00	\$0.00	\$0.00	\$0.00	\$0.00	\$0.00

<u>College</u>	<u>FY14</u>	<u>FY15</u>	<u>FY16</u>	<u>FY17</u>	<u>FY18 YTD</u>	<u>Totals</u>
<b>College of Education &amp; Prof. Studies</b>	<b>\$2,077,426.92</b>	<b>\$1,832,419.00</b>	<b>\$2,191,844.01</b>	<b>\$415,936.50</b>	<b>\$455,710.80</b>	<b>\$6,973,337.23</b>
BIOTECH MANUFACTURING PVD COHORT					\$74,384.00	\$74,384.00
CENTER FOR HUMAN SERVICES	\$524,558.00	\$237,256.00	\$237,256.00	\$237,256.00	\$0.00	\$1,236,326.00
EDUCATION	\$1,552,868.92	\$1,595,163.00	\$1,954,588.01	\$178,680.50	\$381,326.80	\$5,662,627.23
<b>Engineering</b>	<b>\$3,487,206.08</b>	<b>\$6,367,872.33</b>	<b>\$8,940,566.89</b>	<b>\$4,693,118.34</b>	<b>\$10,046,542.93</b>	<b>\$33,535,306.57</b>
CHEMICAL ENGINEERING	\$1,017,782.78	\$1,147,777.99	\$638,045.12	\$532,058.37	\$3,675,192.85	\$7,010,857.11
CIVIL/ENVIRONMENTAL ENGINEERING	\$679,694.60	\$358,795.80	\$626,548.76	\$612,973.05	\$541,859.60	\$2,819,871.81
DEAN'S OFFICE	\$107,273.00	\$65,999.00	\$319,912.80	\$64,876.00	\$286,064.00	\$844,124.80
ELECTRICAL ENGINEERING	\$221,001.00	\$2,903,823.72	\$3,390,875.31	\$737,022.59	\$3,962,262.70	\$11,214,985.32
ENGINEERING COMPUTER CTR	\$42,572.00	\$0.00	\$0.00	\$0.00	\$0.00	\$42,572.00
INTERNATIOANAL ENG PROGRAM		\$17,692.80	\$15,000.00	\$25,000.00	\$0.00	\$57,692.80
MECHANICAL & INDUSTRIAL SYS EGR	\$350,143.00	\$586,746.91	\$1,993,862.41	\$1,103,170.00	\$428,231.38	\$4,462,153.70
OCEAN ENGINEERING	\$1,068,739.70	\$1,287,036.11	\$1,956,322.49	\$1,618,018.33	\$1,152,932.40	\$7,083,049.03
<b>Environment and Life Sciences</b>	<b>\$16,144,544.99</b>	<b>\$19,928,754.89</b>	<b>\$16,957,974.00</b>	<b>\$12,246,360.67</b>	<b>\$11,814,206.62</b>	<b>\$77,091,841.17</b>
BIOLOGICAL SCIENCES	\$1,205,548.39	\$409,221.00	\$253,638.00	\$330,500.00	\$0.00	\$2,198,907.39
CELL AND MOLECULAR BIOLOGY	\$7,148,772.86	\$430,581.00	\$0.00	\$60,697.00	\$60,697.00	\$7,700,747.86
CELLS ACADEMIC UNIT 1		\$2,817,060.20	\$4,150,538.11	\$2,509,767.82	\$1,045,547.40	\$10,522,913.53
CELLS ACADEMIC UNIT 2		\$3,661,919.60	\$4,189,228.41	\$2,933,492.89	\$3,764,684.45	\$14,549,325.35
CELLS ACADEMIC UNIT 3	\$8,000.00	\$5,610,346.18	\$5,712,508.68	\$4,422,068.04	\$3,666,794.80	\$19,419,717.70
CELLS DEAN / ADMINISTRATION				\$28,112.00	\$2,028,284.00	\$2,056,396.00
COMMUNITY PLANNING/AREA DEVEL	\$0.00	\$0.00	\$0.00	\$0.00	\$0.00	\$0.00
COOPERATIVE EXTENSION	\$303,615.00	\$117,786.70	\$8,250.00	\$0.00	\$0.00	\$429,651.70
DEAN'S OFFICE	\$1,671,668.43	\$802,988.20	\$1,639,130.50	\$1,785,936.00	\$0.00	\$5,899,723.13
ENV & NAT RESOURCE ECONOMICS	\$780,131.00	\$570,754.00	\$335,567.20	\$0.00	\$340,632.40	\$2,027,084.60
FISHERIES, ANIMAL & VET SCIENCE	\$958,878.97	\$569,213.69	\$176,211.10	\$83,288.92	\$791,434.57	\$2,579,027.25
GEOSCIENCES	\$566,452.87	\$1,116,544.24	\$113,544.00	\$88,898.00	\$0.00	\$1,885,439.11
MARINE AFFAIRS	\$3,837.00	\$0.00	\$0.00	\$0.00	\$0.00	\$3,837.00
NATURAL RESOURCES SCIENCE	\$3,014,274.22	\$3,753,730.08	\$354,263.00	\$3,600.00	\$0.00	\$7,125,867.30



PLANT SCIENCE	\$483,366.25	\$68,610.00	\$25,095.00	\$0.00	\$116,132.00	\$693,203.25
<b>College</b>	<b>FY14</b>	<b>FY15</b>	<b>FY16</b>	<b>FY17</b>	<b>FY18 YTD</b>	<b>Totals</b>
<b>Graduate School</b>	<b>\$0.00</b>	<b>\$0.00</b>	<b>\$0.00</b>	<b>\$0.00</b>	<b>\$0.00</b>	<b>\$0.00</b>
<b>Human Science and Services</b>	<b>\$632,784.95</b>	<b>\$320,639.22</b>	<b>\$41,750.00</b>	<b>NA*</b>	<b>NA*</b>	<b>\$995,174.17</b>
COMMUNICATIVE DISORDERS	\$0.00	\$0.00	\$24,250.00			\$24,250.00
DEAN'S OFFICE	\$588,623.00	\$319,709.00	\$0.00			\$908,332.00
KINGSTON CHILD DEVELOPMENT CTR	\$7,162.95	\$930.22	\$0.00			\$8,093.17
TEXTILES/FASHION MERCHAND/DESIGN	\$36,999.00	\$0.00	\$17,500.00			\$54,499.00
<b>College of Health Sciences</b>	<b>\$5,038,500.10</b>	<b>\$5,527,394.33</b>	<b>\$6,021,041.77</b>	<b>\$4,961,859.39</b>	<b>\$2,611,894.46</b>	<b>\$24,160,690.05</b>
CANCER PREV RESEARCH CTR	\$1,236,062.50	\$2,284,271.90	\$3,030,564.52	\$1,668,136.64	\$543,207.93	\$8,762,243.49
GERONTOLOGY	\$267,077.10	\$537,787.40	\$1,100,341.45	\$550,451.85	\$0.00	\$2,455,657.80
HUMAN DEV/COUNSEL/FAM STUDIES	\$116,886.00	\$109,355.00	\$226,093.95	\$117,292.45	\$69,458.00	\$639,085.40
KINESIOLOGY	\$0.00	\$0.00	\$5,000.00	\$3,000.00	\$0.00	\$8,000.00
NUTRITION AND FOOD SCIENCES	\$2,847,405.50	\$2,132,969.00	\$334,417.00	\$1,663,532.00	\$875,262.53	\$7,853,586.03
PHYSICAL THERAPY	\$341,442.00	\$87,892.00	\$840,254.65	\$540,230.45	\$716,118.00	\$2,525,937.10
PSYCHOLOGY	\$229,627.00	\$375,119.03	\$484,370.20	\$419,216.00	\$407,848.00	\$1,916,180.23
<b>ACADEMIC HEALTH COLLABORATIVE</b>				<b>\$1,408,568.66</b>	<b>\$690,138.00</b>	<b>\$2,098,706.66</b>
IIHI ADMINISTRATION				\$1,408,568.66	\$690,138.00	\$2,098,706.66
<b>Nursing</b>	<b>\$1,298,944.60</b>	<b>\$682,403.25</b>	<b>\$1,807,216.30</b>	<b>\$1,512,030.27</b>	<b>\$71,589.56</b>	<b>\$5,372,183.98</b>
<b>Oceanography</b>	<b>\$22,981,661.90</b>	<b>\$25,356,628.31</b>	<b>\$31,099,397.41</b>	<b>\$30,870,365.04</b>	<b>\$13,645,956.00</b>	<b>\$123,954,008.66</b>

<b>Pharmacy</b>	<b>\$6,963,909.80</b>	<b>\$10,644,721.20</b>	<b>\$6,549,687.65</b>	<b>\$6,356,777.70</b>	<b>\$3,716,910.26</b>	<b>\$34,182,006.61</b>
BIOMEDICAL & PHARMACEUTICAL SCI	\$5,544,086.00	\$6,272,151.75	\$5,773,671.13	\$5,728,968.10	\$3,478,973.26	\$26,797,850.24
CRIME LAB	\$33,092.00	\$30,770.75	\$14,333.75	\$31,094.25	\$0.00	\$109,290.75
DEAN'S OFFICE	\$0.00	\$0.00	\$0.00	\$0.00	\$0.00	\$0.00
ELDERLY MEDICATION	\$0.00	\$0.00	\$0.00	\$0.00	\$0.00	\$0.00
LIVING RITE/HEALTH POLICY	\$811,359.00	\$2,988,425.40	\$0.00	\$0.00	\$0.00	\$3,799,784.40
PHARMACY PRACTICE	\$575,372.80	\$1,353,373.30	\$761,682.77	\$596,715.35	\$187,937.00	\$3,475,081.22
RYAN INSTITUTE NEUROSCIENCE					\$50,000.00	

<u>College</u>	<u>FY14</u>	<u>FY15</u>	<u>FY16</u>	<u>FY17</u>	<u>FY18 YTD</u>	<u>Totals</u>
<b>University College</b>	<b>\$199,568.70</b>	<b>\$0.00</b>	<b>\$188,215.60</b>	<b>\$0.00</b>	<b>\$0.00</b>	<b>\$387,784.30</b>

<u>College</u>	<u>FY14</u>	<u>FY15</u>	<u>FY16</u>	<u>FY17</u>	<u>FY18 YTD</u>	<u>Totals</u>
<b>University Library</b>	<b>\$0.00</b>	<b>\$0.00</b>	<b>\$0.00</b>	<b>\$1,116,253.68</b>	<b>\$215,000.00</b>	<b>\$1,331,253.68</b>
DATASPARK				\$1,116,253.68	\$215,000.00	\$1,331,253.68

NA - NOT APPLICABLE (Unit does not exist)

CANCER PREV RESEARCH CTR - Prior to FY17 was reported in Arts and Sciences

CENTER FOR HUMAN SERVICES - Prior to FY17 was reported in Human Science and Services

EDUCATION - Prior to FY17 was reported in Human Science and Services

GERONTOLOGY - Prior to FY17 was reported in Human Science and Services

HUMAN DEV/COUNSEL/FAM STUDIES - Prior to FY17 was reported in Human Science and Services

NUTRITION AND FOOD SCIENCES - Prior to FY17 was reported in Environment and Life Sciences

PHYSICAL THERAPY - Prior to FY17 was reported in Human Science and Services

PSYCHOLOGY - Prior to FY17 was reported in Arts and Sciences

**Table 2b. Awards received by units within administrative divisions FY14 through December FY18 YTD**

<u>Administrative Unit</u>	<u>FY14</u>	<u>FY15</u>	<u>FY16</u>	<u>FY17</u>	<u>FY18 YTD</u>	<u>Totals</u>
<b>President's Office</b>	<b>\$0.00</b>	<b>\$0.00</b>	<b>\$0.00</b>	<b>\$0.00</b>	<b>\$0.00</b>	<b>\$0.00</b>
<b>Provost</b>	<b>\$66,522.90</b>	<b>\$333,665.52</b>	<b>\$347,327.90</b>	<b>\$0.00</b>	<b>\$0.00</b>	<b>\$747,516.32</b>
ADVANCE OFFICE	\$0.00	\$0.00	\$0.00	\$0.00	\$0.00	\$0.00
LABOR RESEARCH CENTER	\$0.00	\$143,874.60	\$243,922.70	\$0.00	\$0.00	\$387,797.30
NETWORK AND TELECOM SERVICES	\$0.00	\$0.00	\$0.00	\$0.00	\$0.00	\$0.00
PROVOST	\$66,522.90	\$189,790.92	\$103,405.20	\$0.00	\$0.00	\$359,719.02
<b>VP, Administration</b>	<b>\$934,258.37</b>	<b>\$12,176.00</b>	<b>\$0.00</b>	<b>\$24,923.00</b>	<b>\$0.00</b>	<b>\$12,176.00</b>
POLICE				\$24,923.00	\$0.00	\$24,923.00
TRANSPORTATION CENTER	\$934,258.37	NA	NA	NA	NA	\$934,258.37
VICE PRESIDENT FOR ADMINISTRATION	\$0.00	\$12,176.00	\$0.00	\$0.00	\$0.00	\$12,176.00
<b>VP, Research &amp; Economic Development</b>	<b>\$4,177,835.54</b>	<b>\$5,781,973.31</b>	<b>\$5,019,163.69</b>	<b>\$4,130,075.00</b>	<b>\$1,650,256.00</b>	<b>\$13,989,780.54</b>
SMALL BUSINESS DEVELOPMENT CTR	\$172,400.00	\$1,090,101.00	\$650,000.00	\$0.00	\$0.00	\$1,912,501.00
VICE PRESIDENT FOR RESEARCH	\$4,005,435.54	\$4,011,596.00	\$0.00	\$1,650,626.00	\$484,299.00	\$10,151,956.54
TRANSPORTATION CENTER		\$680,276.31	\$1,044,239.69	\$192,007.00	\$8,800.00	\$1,925,323.00
URI RESEARCH FOUNDATION			\$3,324,924.00	\$2,287,442.00	\$1,157,157.00	\$6,769,523.00
<b>VP, Student Affairs</b>	<b>\$261,091.70</b>	<b>\$267,287.19</b>	<b>\$124,215.60</b>	<b>\$0.00</b>	<b>\$0.00</b>	<b>\$652,594.49</b>
STUDENT LIFE	\$61,523.00	\$0.00	\$0.00	\$0.00	\$0.00	\$61,523.00
TALENT DEVELOPMENT	\$199,568.70	\$142,343.19	\$118,215.60	\$0.00	\$0.00	\$460,127.49
VICE PRESIDENT STUDENT AFFAIRS		\$124,944.00	\$0.00	\$0.00	\$0.00	\$124,944.00
WOMENS CENTER			\$6,000.00	\$0.00	\$0.00	\$6,000.00

NA - Not Applicable (unit did not exist or was in another division)

# DIVISION OF RESEARCH AND ECONOMIC DEVELOPMENT

## Awards for College of Arts & Sciences

From: 7/1/2017 To: 12/31/2017

Investigator Award Total: \$2,198,661.05

### Chemistry

**Total: \$1,653,699.00**

AWARD DATE	AWARD ID	SPONSOR	INVESTIGATOR	ROLE	AWARD AMT	CREDIT	PORTION AMT	TITLE	BEGIN DATE	END DATE
10/23/2017	AWD06197	Electro Standards Laboratories	Lucht,Brett	AWPI	147202	50	\$73,601.00	Tradeoff in Chemistry of Lithium Ion Battery for Energy/Power with External Lithium Ion Super Capacitor	9/8/2017	9/7/2018
7/19/2017	AWD04251	BASF Chemical Company	Lucht,Brett L	AWPI	297849	100	\$297,849.00	Development of Electrolytes for Lithium Ion Batteries	1/1/2017	12/31/2018
12/22/2017	AWD04251	BASF Chemical Company	Lucht,Brett L	AWPI	257021	100	\$257,021.00	Development of Electrolytes for Lithium Ion Batteries	1/1/2018	12/31/2018
10/4/2017	AWD06076	United States Army	Oxley,Jimmie	AWPI	202392	50	\$101,196.00	Controlled Release of Additives for Modification of Energetic Materials	9/1/2017	9/1/2018
8/21/2017	AWD04284	DEFENSE THREAT REDUCTION AGENCY	Oxley,Jimmie C	AWPI	180000	50	\$90,000.00	Unique Polymer Packaging and Delivery of ADW	5/19/2014	10/1/2018
8/21/2017	AWD03809	Northeastern University	Oxley,Jimmie C	AWPI	470000	100	\$470,000.00	AWARENESS AND LOCALIZATION OF EXPLOSIVES-RELATED THREATS (ALERT)	8/25/2013	6/30/2018
8/21/2017	AWD03809	Northeastern University	Oxley,Jimmie C	AWPI	172836	100	\$172,836.00	AWARENESS AND LOCALIZATION OF EXPLOSIVES-RELATED THREATS (ALERT)	8/25/2013	6/30/2018
10/4/2017	AWD06076	United States Army	Smith,James	WCPI	202392	50	\$101,196.00	Controlled Release of Additives for Modification of Energetic Materials	9/1/2017	9/1/2018
8/21/2017	AWD04284	DEFENSE THREAT REDUCTION AGENCY	Smith,James L	WCPI	180000	50	\$90,000.00	Unique Polymer Packaging and Delivery of ADW	5/19/2014	10/1/2018

### Computer Science

**Total: \$69,120.00**

## DIVISION OF RESEARCH AND ECONOMIC DEVELOPMENT

AWARD DATE	AWARD ID	SPONSOR	INVESTIGATOR	ROLE	AWARD AMT	CREDIT	PORTION AMT	TITLE	BEGIN DATE	END DATE
7/28/2017	AWD06051	RI Commerce_Corporation	Daniels,Noah	AWPI	50000	100	\$50,000.00	Prediction of Network Equipment Failure	7/17/2017	12/31/2017
9/26/2017	AWD06083	Brown University	Puggioni,Gavino	AWPI	19120	100	\$19,120.00	RI Center for Clinical and Translational Research	5/1/2017	4/30/2018

### Languages

**Total: \$406,490.00**

AWARD DATE	AWARD ID	SPONSOR	INVESTIGATOR	ROLE	AWARD AMT	CREDIT	PORTION AMT	TITLE	BEGIN DATE	END DATE
8/21/2017	AWD05196	Institute for International Education	He,Wayne Wenchao	AWPI	325860	100	\$325,860.00	Chinese Flagship 2016-2020	6/1/2017	5/31/2018
12/21/2017	AWD05961	Institute for International Education	He,Wayne Wenchao	AWPI	19015	100	\$19,015.00	Chinese Flagship Student Support Program 2017-2018	4/1/2017	5/31/2018
7/28/2017	AWD05461	US Department of Education	Magidow,Alexander	AWPI	61615	100	\$61,615.00	Building Towards an International Business Program in Arabic at URI	10/1/2017	9/30/2018

### Mathematics

**Total: \$32,648.20**

AWARD DATE	AWARD ID	SPONSOR	INVESTIGATOR	ROLE	AWARD AMT	CREDIT	PORTION AMT	TITLE	BEGIN DATE	END DATE
10/23/2017	AWD06128	RI Office of Postsecondary Commissioner	Hersey,Nicole	WCPI	326482	10	\$32,648.20	Program of Instructional Support for Teachers of English Language Learners	9/1/2017	12/1/2018

### Physics

**Total: \$21,788.00**

## DIVISION OF RESEARCH AND ECONOMIC DEVELOPMENT

AWARD DATE	AWARD ID	SPONSOR	INVESTIGATOR	ROLE	AWARD AMT	CREDIT	PORTION AMT	TITLE	BEGIN DATE	END DATE
10/2/2017	AWD04732	Yale University	Andreev,Oleg	AWPI	21788	50	\$10,894.00	Mechanism and Uses of Transmembrane Helix Insertion by Soluble Peptides	1/1/2017	12/31/2017
10/2/2017	AWD04732	Yale University	Reshetnyak,Yana	WCPI	21788	50	\$10,894.00	Mechanism and Uses of Transmembrane Helix Insertion by Soluble Peptides	1/1/2017	12/31/2017

### Political Science

**Total: \$14,915.85**

AWARD DATE	AWARD ID	SPONSOR	INVESTIGATOR	ROLE	AWARD AMT	CREDIT	PORTION AMT	TITLE	BEGIN DATE	END DATE
8/16/2017	AWD05816	National Science Foundation	Krueger,Brian	WCPI	99439	15	\$14,915.85	SCC-Planning: Smart and Connected Residential Water Quality Community	8/15/2017	7/31/2018

# DIVISION OF RESEARCH AND ECONOMIC DEVELOPMENT

## Awards for College of Business Administration

From: 7/1/2017 To: 12/31/2017

Investigator Award Total: \$50,000.00

### Dean-Coll-Bus-Adm

**Total: \$50,000.00**

AWARD DATE	AWARD ID	SPONSOR	INVESTIGATOR	ROLE	AWARD AMT	CREDIT	PORTION AMT	TITLE	BEGIN DATE	END DATE
8/28/2017	AWD05956	Foundation for Food & Agriculture Resear	Atlas,Stephen	WCPI	100000	50	\$50,000.00	IIHI - Targeted Incentives, Food Purchases and Health Outcomes	9/1/2017	8/31/2018

# DIVISION OF RESEARCH AND ECONOMIC DEVELOPMENT

## Awards for College of Education and Professional Studies

From 7/1/2017 To: 12/31/2017

Investigator Award Total: \$455,710.80

### Biotech Mfg Providence Cohort

**Total: \$74,384.00**

AWARD DATE	AWARD ID	SPONSOR	INVESTIGATOR	ROLE	AWARD AMT	CREDIT	PORTION AMT	TITLE	BEGIN DATE	END DATE
8/7/2017	AWD05810	Education Development Center, Inc.	Bozzi,Edward	AWPI	74384	100	\$74,384.00	RI Amgen Biotechnology Experience	7/1/2017	6/30/2018

### School of Education

**Total: \$381,326.80**

AWARD DATE	AWARD ID	SPONSOR	INVESTIGATOR	ROLE	AWARD AMT	CREDIT	PORTION AMT	TITLE	BEGIN DATE	END DATE
10/23/2017	AWD06128	RI Office of Postsecondary Commission	Adamy,Peter	WCPI	326482	30	\$97,944.60	Program of Instructional Support for Teachers of English Language Learners	9/1/2017	12/1/2018
10/23/2017	AWD06128	RI Office of Postsecondary Commission	Byrd,David	AWPI	326482	30	\$97,944.60	Program of Instructional Support for Teachers of English Language Learners	9/1/2017	12/1/2018
11/29/2017	AWD06086	Jumpstart for Young Children, Inc.	Byrd,David	AWPI	87493	100	\$87,493.00	JUMPSTART 2018	9/1/2017	8/31/2018
10/23/2017	AWD06128	RI Office of Postsecondary Commission	Correia,Amy	WCPI	326482	30	\$97,944.60	Program of Instructional Support for Teachers of English Language Learners	9/1/2017	12/1/2018



## DIVISION OF RESEARCH AND ECONOMIC DEVELOPMENT

### Awards for College of Engineering

From: 7/1/2017 To: 12/31/2017

Investigator Award Total: \$10,046,542.93

#### Chemical Engineering

**Total: \$3,675,192.85**

AWARD DATE	AWARD ID	SPONSOR	INVESTIGATOR	ROLE	AWARD AMT	CREDIT	PORTION AMT	TITLE	BEGIN DATE	END DATE
8/11/2017	AWD04741	University of Maryland	Bothun,Geoffrey	AWPI	28178	100	\$28,178.00	Molecular Engineering of Food-Grade Dispersants as Highly Efficient and Safe Products for the Treatment of Oil Spills	1/1/2016	12/31/2017
9/21/2017	AWD05500	National Science Foundation	Bothun,Geoffrey	AWPI	4535519	75	\$3,401,639.25	RII Track-1: Enhancing Rhode Island's Coastal Environment to Enable Growth in a Blue Economy	8/1/2017	7/31/2022
9/22/2017	AWD05994	RI Commerce Corporation	Bothun,Geoffrey	AWPI	50000	100	\$50,000.00	Evaluation of a New Cleaning Process for Medical Devices	5/21/2017	12/31/2017
10/4/2017	AWD05308	National Institute of Health	Bothun,Geoffrey	WCPI	1669877	11.7	\$195,375.60	CI - STEEP - Sources, Transport, Exposure and Effects of Perfluoroalkyl Substances	7/1/2017	3/31/2018

#### Civil and Environmental Engine

**Total: \$541,859.60**

AWARD DATE	AWARD ID	SPONSOR	INVESTIGATOR	ROLE	AWARD AMT	CREDIT	PORTION AMT	TITLE	BEGIN DATE	END DATE
12/21/2017	AWD06042	RI Dept. of Transportation	Bradshaw,Aaron	AWPI	249430	100	\$249,430.00	Reticulated Micropiles for Preservation and Rehabilitation of Transportation Infrastructure	10/10/2017	1/31/2018
7/14/2017	AWD05857	National Science Foundation	Craver,Vinka	AWPI	40025	100	\$40,025.00	Collaborative Research: Pan American Nanotechnology Conference: Shaping the Future	8/1/2017	7/31/2018
8/8/2017	AWD05857	National Science Foundation	Craver,Vinka	AWPI	7000	100	\$7,000.00	Collaborative Research: Pan American Nanotechnology Conference: Shaping the Future	8/1/2017	7/31/2018
8/16/2017	AWD05816	National Science Foundation	Craver,Vinka	AWPI	99439	40	\$39,775.60	SCC-Planning: Smart and Connected Residential Water Quality Community	8/15/2017	7/31/2018

## DIVISION OF RESEARCH AND ECONOMIC DEVELOPMENT

AWARD DATE	AWARD ID	SPONSOR	INVESTIGATOR	ROLE	AWARD AMT	CREDIT	PORTION AMT	TITLE	BEGIN DATE	END DATE
7/5/2017	AWD03893	National Science Foundation	Craver,Vinka A	PI	6631	100	\$6,631.00	CAREER: BACTERIAL ADAPTATION MECHANISM TO CHRONIC EXPOSURE TO NANOPARTICLES AND ITS IMPLICATIONS TO NANOMANUFACTURING AND PUBLIC HEALTH	5/1/2014	4/30/2019
7/14/2017	AWD03893	National Science Foundation	Craver,Vinka A	PI	49966	100	\$49,966.00	CAREER: BACTERIAL ADAPTATION MECHANISM TO CHRONIC EXPOSURE TO NANOPARTICLES AND ITS IMPLICATIONS TO NANOMANUFACTURING AND PUBLIC HEALTH	5/1/2014	4/30/2019
10/22/2017	AWD03893	National Science Foundation	Craver,Vinka A	PI	88732	100	\$88,732.00	CAREER: BACTERIAL ADAPTATION MECHANISM TO CHRONIC EXPOSURE TO NANOPARTICLES AND ITS IMPLICATIONS TO NANOMANUFACTURING AND PUBLIC HEALTH	5/1/2014	4/30/2019
8/17/2017	AWD06138	Rhode Island Marine Trade Association	Das,Sumanta	AWPI	45000	34	\$15,300.00	Phase 1: Composite Materials for Bridges in Rhode Island	8/29/2017	12/31/2017
8/30/2017	AWD06175	Rhode Island Marine Trade Association	Das,Sumanta	AWPI	45000	34	\$15,300.00	Phase 1: Composite Materials for Bridges in Rhode Island	8/29/2017	12/31/2017
8/17/2017	AWD06138	Rhode Island Marine Trade Association	Tsiatas,George	WCPI	45000	33	\$14,850.00	Phase 1: Composite Materials for Bridges in Rhode Island	8/29/2017	12/31/2017
8/30/2017	AWD06175	Rhode Island Marine Trade Association	Tsiatas,George	WCPI	45000	33	\$14,850.00	Phase 1: Composite Materials for Bridges in Rhode Island	8/29/2017	12/31/2017

**Dean Engineering**  
**Total: \$286,064.00**

AWARD DATE	AWARD ID	SPONSOR	INVESTIGATOR	ROLE	AWARD AMT	CREDIT	PORTION AMT	TITLE	BEGIN DATE	END DATE
8/7/2017	AWD05770	National Science Foundation	He,Haibo	AWPI	221188	100	\$221,188.00	Collaborative Research: Enabling Dynamic Spectrum Access for Future Broadband Wireless Networks Using Neuromorphic Computing	8/15/2017	7/31/2020
10/10/2017	AWD05137	University of Connecticut STORRS	Wright,Raymond	AWPI	64876	100	\$64,876.00	Northeast LSAMP Senior Alliance: 2016-2021	9/1/2016	8/31/2018

**Elec, Computer & Bio Engr**  
**Total: \$3,962,262.70**

## DIVISION OF RESEARCH AND ECONOMIC DEVELOPMENT

AWARD DATE	AWARD ID	SPONSOR	INVESTIGATOR	ROLE	AWARD AMT	CREDIT	PORTION AMT	TITLE	BEGIN DATE	END DATE
7/21/2017	AWD05595	National Science Foundation	Besio,Walter	AWPI	199999	100	\$199,999.00	FromLab to Market - Transcranial Focal Electrical Stimulation (TFS) for Epilepsy	7/15/2017	12/31/2018
9/20/2017	AWD04693	National Science Foundation	Besio,Walter	AWPI	2999965	65	\$1,949,977.25	RII Track -2 FEC: Innovative, Broadly Accessible Tools for Brain Imaging, Decoding, and Modulation	8/1/2015	7/31/2019
9/20/2017	AWD04693	National Science Foundation	Kennedy,Stephen	WCPI	2999965	15	\$449,994.75	RII Track -2 FEC: Innovative, Broadly Accessible Tools for Brain Imaging, Decoding, and Modulation	8/1/2015	7/31/2019
7/18/2017	AWD05689	National Science Foundation	Li,Bin	AWPI	301430	100	\$301,430.00	Emulating Round-Robin in Wireless Networks	10/1/2017	9/30/2020
7/7/2017	AWD05100	Rhode Island Hospital	Mankodiya,Kunal	AWPI	14731	100	\$14,731.00	Understanding the Interplay of Social Context and Physiology on Psychological Outcomes in Trauma-Exposed Adolescents	4/1/2017	3/31/2018
7/11/2017	AWD05662	Pet Tech	Mankodiya,Kunal	AWPI	50000	100	\$50,000.00	PetRover - A Robotized Entertaining Pet Toy Integrated with Internet-of-things Technology	5/1/2017	4/30/2018
8/7/2017	AWD05912	RI Commerce Corporation	Mankodiya,Kunal	AWPI	50000	100	\$50,000.00	Smart Billboards: An Internet of Infrastructure for Smart Cities	6/1/2017	4/30/2018
8/16/2017	AWD05816	National Science Foundation	Mankodiya,Kunal	WCPI	99439	30	\$29,831.70	SCC-Planning: Smart and Connected Residential Water Quality Community	8/15/2017	7/31/2018
9/20/2017	AWD04693	National Science Foundation	Mankodiya,Kunal	WCPI	2999965	20	\$599,993.00	RII Track -2 FEC: Innovative, Broadly Accessible Tools for Brain Imaging, Decoding, and Modulation	8/1/2015	7/31/2019
10/23/2017	AWD06197	Electro Standards Laboratories	Vaccaro,Richard	WCPI	147202	50	\$73,601.00	Tradeoff in Chemistry of Lithium Ion Battery for Energy/Power with External Lithium Ion Super Capacitor	9/8/2017	9/7/2018
7/31/2017	AWD05665	US of Office of Naval Research	Wei,Tao	AWPI	170000	100	\$170,000.00	ONR YIP: Sub-Terahertz-Range-Interrogated Fiber-Optic Devices for High-Speed Distributed Sensing Applications	6/1/2017	5/30/2020
9/12/2017	AWD05693	URI Research Foundation	Wei,Tao	AWPI	72705	100	\$72,705.00	Joint Research Project Between Dapu Tech and URI	8/25/2016	8/25/2018

**Mech., Ind., Sys. Engineering**

**Total: \$428,231.38**

## DIVISION OF RESEARCH AND ECONOMIC DEVELOPMENT

AWARD DATE	AWARD ID	SPONSOR	INVESTIGATOR	ROLE	AWARD AMT	CREDIT	PORTION AMT	TITLE	BEGIN DATE	END DATE
7/5/2017	AWD05612	U.S. Nuclear Regulatory Commission	Nassersharif,Bahram	AWPI	126880	100	\$126,880.00	NEEPRI-NRC Scholarships	6/30/2017	6/29/2019
7/12/2017	AWD05891	RI Commerce Corporation	Nassersharif,Bahram	AWPI	49895	100	\$49,895.00	Design Investigation of Body Armor	6/12/2017	12/12/2018
7/21/2017	AWD05621	US of Office of Naval Research	Shukla,Arun	AWPI	5000	100	\$5,000.00	Implosion of Advanced Composite Structures Within Complex Underwater Environments	1/1/2017	12/31/2019
8/17/2017	AWD06138	Rhode Island Marine Trade Association	Shukla,Arun	WCPI	45000	33	\$14,850.00	Phase 1: Composite Materials for Bridges in Rhode Island	8/29/2017	12/31/2017
8/30/2017	AWD06175	Rhode Island Marine Trade Association	Shukla,Arun	WCPI	45000	33	\$14,850.00	Phase 1: Composite Materials for Bridges in Rhode Island	8/29/2017	12/31/2017
9/7/2017	AWD05915	University of Connecticut STORRS	Shukla,Arun	WCPI	204114	33	\$67,357.62	Southeast New England Naval STEM Coalition: Advancing the Navy's STEM Education and Workforce Capabilities	9/1/2017	8/30/2018
12/13/2017	AWD05621	US of Office of Naval Research	Shukla,Arun	AWPI	30000	100	\$30,000.00	Implosion of Advanced Composite Structures Within Complex Underwater Environments	1/1/2017	12/31/2017
8/1/2017	AWD05916	RI Commerce Corporation	Taggart,David	AWPI	50000	50	\$25,000.00	Simulation Models for Inflatable Drop Stitch Structures	7/1/2017	6/30/2018
9/7/2017	AWD05915	University of Connecticut STORRS	Taggart,David	AWPI	204114	34	\$69,398.76	Southeast New England Naval STEM Coalition: Advancing the Navy's STEM Education and Workforce Capabilities	9/1/2017	8/30/2018
8/1/2017	AWD05916	RI Commerce Corporation	Tsiatas,George	WCPI	50000	50	\$25,000.00	Simulation Models for Inflatable Drop Stitch Structures	7/1/2017	6/30/2018

### Ocean Engineering

**Total: \$1,152,932.40**

AWARD DATE	AWARD ID	SPONSOR	INVESTIGATOR	ROLE	AWARD AMT	CREDIT	PORTION AMT	TITLE	BEGIN DATE	END DATE
7/20/2017	AWD05503	US of Office of Naval Research	Dahl,Jason	WCPI	50000	50	\$25,000.00	Further Development and Validation of an Efficient Hybrid-BEM-LBM Model for Fluid-Structure Interaction Problems	9/1/2016	8/31/2021
10/4/2017	AWD06212	RI Coastal Res Mgt. Council	Grilli,Annette	AWPI	266823	100	\$266,823.00	HUD VI Design Elevation Maps	10/1/2017	1/31/2019

## DIVISION OF RESEARCH AND ECONOMIC DEVELOPMENT

AWARD DATE	AWARD ID	SPONSOR	INVESTIGATOR	ROLE	AWARD AMT	CREDIT	PORTION AMT	TITLE	BEGIN DATE	END DATE
10/10/2017	AWD06217	RI Coastal Res Mgt.Council	Grilli,Annette	WCPI	50000	50	\$25,000.00	A Hydrodynamic Model Study to Assess the Impact of Dredging the Channels Connecting Ninigret and Green Hill Pont on Circulation and Flushing of Green Hill Pont, Charlestown, RI	10/4/2017	4/15/2018
10/12/2017	AWD05983	University of Delaware	Grilli,Annette	WCPI	49953	50	\$24,976.50	Modeling Tsunami Inundation and Hazard for the US East Coast (Phase 6)	9/1/2017	8/31/2019
12/22/2017	AWD05699	RI Coastal Res Mgt.Council	Grilli,Annette	WCPI	137467	68	\$93,477.56	CI - Developing the Rhode Island Coastal Environmental Risk Index to Inform State and Local Planning and Decision Making	10/1/2017	12/31/2018
7/20/2017	AWD05503	US of Office of Naval Research	Grilli,Stephan	AWPI	50000	50	\$25,000.00	Further Development and Validation of an Efficient Hybrid-BEM-LBM Model for Fluid-Structure Interaction Problems	9/1/2016	8/31/2021
10/12/2017	AWD05983	University of Delaware	Grilli,Stephan	AWPI	49953	50	\$24,976.50	Modeling Tsunami Inundation and Hazard for the US East Coast (Phase 6)	9/1/2017	8/31/2019
10/3/2017	AWD06155	RI Coastal Res Mgt.Council	Hashemi,S. M. Reza	WCPI	189900	50	\$94,950.00	CI - HUD V BEACH SAMP	10/1/2017	1/28/2019
10/10/2017	AWD06217	RI Coastal Res Mgt.Council	Hashemi,S. M. Reza	AWPI	50000	50	\$25,000.00	A Hydrodynamic Model Study to Assess the Impact of Dredging the Channels Connecting Ninigret and Green Hill Pont on Circulation and Flushing of Green Hill Pont, Charlestown, RI	10/4/2017	4/15/2018
10/12/2017	AWD04881	Naval Undersea Warfare Center	Licht,Stephen	AWPI	104258.82	100	\$104,258.82	NEEC: Modeling and Control of Agile Biologically Inspired Unmanned Underwater Vehicles	9/30/2016	9/29/2018
7/7/2017	AWD06012	Deepwater Wind LLC	Miller,James	AWPI	40000	34	\$13,600.00	Technology Demonstration for Real Time Passive Whale Tracking Near Offshore Wind Energy Facilities	6/15/2017	8/31/2018
7/14/2017	AWD05336	US of Office of Naval Research	Miller,James	AWPI	80000	50	\$40,000.00	Low Frequency Acoustic Propagation: The Effects of Sediment Properties	4/1/2016	9/30/2019
9/7/2017	AWD05915	University of Connecticut STORRS	Miller,James	WCPI	204114	33	\$67,357.62	Southeast New England Naval STEM Coalition: Advancing the Navy's STEM Education and Workforce Capabilities	9/1/2017	8/30/2018
9/22/2017	AWD06011	US Dept of Interior	Miller,James	WCPI	166551	20	\$33,310.20	CI - Assessing Movements of Nanotagged Birds Near the Block Island Wind Farm: A Validation Study	9/22/2017	1/22/2020
10/11/2017	AWD06078	HDR / e2M	Miller,James	AWPI	51550	50	\$25,775.00	Summer 2017 BIWF Program and Quicklook Data Analyses	8/22/2017	2/28/2018
12/6/2017	AWD04743	Brown University	Miller,James	AWPI	50000	50	\$25,000.00	Remote Sensing of Sub-Surface Structure of Extraterrestrial Bodies Using Laser Doppler Velocimetry Measurements of Rayleigh Waves	5/6/2015	5/5/2018

## DIVISION OF RESEARCH AND ECONOMIC DEVELOPMENT

AWARD DATE	AWARD ID	SPONSOR	INVESTIGATOR	ROLE	AWARD AMT	CREDIT	PORTION AMT	TITLE	BEGIN DATE	END DATE
7/7/2017	AWD06012	Deepwater Wind LLC	Potty,Gopu	WCPI	40000	33	\$13,200.00	Technology Demonstration for Real Time Passive Whale Tracking Near Offshore Wind Energy Facilities	6/15/2017	8/31/2018
7/14/2017	AWD05336	US of Office of Naval Research	Potty,Gopu	WCPI	80000	50	\$40,000.00	Low Frequency Acoustic Propagation: The Effects of Sediment Properties	4/1/2016	9/30/2019
9/22/2017	AWD06011	US Dept of Interior	Potty,Gopu	WCPI	166551	20	\$33,310.20	CI - Assessing Movements of Nanotagged Birds Near the Block Island Wind Farm: A Validation Study	9/22/2017	1/22/2020
10/11/2017	AWD06078	HDR / e2M	Potty,Gopu	WCPI	51550	50	\$25,775.00	Summer 2017 BIWF Program and Quicklook Data Analyses	8/22/2017	2/28/2018
12/6/2017	AWD04743	Brown University	Potty,Gopu	WCPI	50000	50	\$25,000.00	Remote Sensing of Sub-Surface Structure of Extraterrestrial Bodies Using Laser Doppler Velocimetry Measurements of Rayleigh Waves	5/6/2015	5/5/2018
7/7/2017	AWD06012	Deepwater Wind LLC	Van Uffelen,Lora	WCPI	40000	33	\$13,200.00	Technology Demonstration for Real Time Passive Whale Tracking Near Offshore Wind Energy Facilities	6/15/2017	8/31/2018
12/7/2017	AWD05506	US of Office of Naval Research	Van Uffelen,Lora	AWPI	87942	100	\$87,942.00	Glider-Based Measurements of Acoustic Tomography Signals:Modeling and Experiment in the Canada Basin and Philippine Sea	3/15/2017	12/31/2019

## DIVISION OF RESEARCH AND ECONOMIC DEVELOPMENT

### Awards for College of the Environment and Life Sciences

From: 7/1/2017 To: 12/31/2017

Investigator Award Total: \$11,814,206.62

#### Biochem-Microb-Molecular Gen.

**Total: \$60,697.00**

AWARD DATE	AWARD ID	SPONSOR	INVESTIGATOR	ROLE	AWARD AMT	CREDIT	PORTION AMT	TITLE	BEGIN DATE	END DATE
8/7/2017	AWD04282	University of California at Davis	Rothman,Alan	AWPI	60697	100	\$60,697.00	Quantifying Heterogeneities in Dengue Virus Transmission Dynamics	5/1/2015	4/30/2017

#### CELS Academic Unit 1

**Total: \$1,045,547.40**

AWARD DATE	AWARD ID	SPONSOR	INVESTIGATOR	ROLE	AWARD AMT	CREDIT	PORTION AMT	TITLE	BEGIN DATE	END DATE
11/22/2017	AWD06037	National Crop Insurance Services	Alm,Steven	AWPI	122395	100	\$122,395.00	Risk Management and Crop Insurance Education for Rhode Island Growers 2017-18	10/1/2017	9/30/2018
10/6/2017	AWD05979	University of Vermont	Faubert,Heather	AWPI	20500	100	\$20,500.00	Season Extension with Caterpillar Tunnels on Rhode Island Farms	10/1/2017	10/31/2018
12/4/2017	AWD05412	Cornell University	Faubert,Heather	AWPI	20060	100	\$20,060.00	Northeast Plant Diagnostic Network FY 2016/2018	9/1/2016	8/31/2018
9/12/2017	AWD05028	US Department of Agriculture	Gomez-Chiarri,Marta	AWPI	47481	100	\$47,481.00	Defining Disease Resistant and Tolerant Phenotypes Among Selectively Bred Oyster Families	9/1/2015	8/30/2020
9/26/2017	AWD06153	Auburn University	Gomez-Chiarri,Marta	AWPI	10000	100	\$10,000.00	CELS: NRSP8 Auburn - Evaluating the Genetic Potential for Environmental Adaptation in Eastern Oysters Through Resequencing	8/1/2017	7/31/2018
10/3/2017	AWD04240	US Department of Agriculture	Gomez-Chiarri,Marta	AWPI	41850	100	\$41,850.00	CI - Sequencing the Genome of the Eastern Oyster	2/1/2015	1/31/2018
10/13/2017	AWD06054	RI Commerce_Corporation	Gomez-Chiarri,Marta	AWPI	50000	100	\$50,000.00	RI Innovation Voucher: The Matunuck Hatchery: Product Diversification and Vertical Integration in a Sustainable Seafood Business	9/5/2017	7/31/2018

## DIVISION OF RESEARCH AND ECONOMIC DEVELOPMENT

AWARD DATE	AWARD ID	SPONSOR	INVESTIGATOR	ROLE	AWARD AMT	CREDIT	PORTION AMT	TITLE	BEGIN DATE	END DATE
12/1/2017	AWD06250	Kansas State University	Horan,Kristina	WCPI	22496	5	\$1,124.80	RI 2018 4-H Military Partnership Grant	10/1/2017	9/30/2018
8/24/2017	AWD05393	US Dept of Commerce NOAA	Humphries,Austin	AWPI	299434	60	\$179,660.40	Optimizing Kelp and Oyster Integrated Multi-Trophic Aquaculture: Developing a Spatially Explicit Ecosystem Model	9/1/2017	8/31/2019
11/21/2017	AWD06295	Western Connecticut State University	Mather,Thomas	AWPI	188565	100	\$188,565.00	Spatially Scalable Integrated Tick Vector/Rodent Reservoir Management Reduce Human Risk of Exposure to Ixodes Scapularis Ticks Infected with Lyme Disease Spirochetes	9/1/2017	8/31/2018
12/1/2017	AWD06250	Kansas State University	Morreira,Marcia	WCPI	22496	5	\$1,124.80	RI 2018 4-H Military Partnership Grant	10/1/2017	9/30/2018
9/6/2017	AWD04651	University of Vermont	Petersson,Katherine	AWPI	18545	100	\$18,545.00	New Approaches for Improving Integrated Parasite Control Strategies in the Northeast	9/1/2015	12/31/2018
9/22/2017	AWD06079	University of Vermont	Petersson,Katherine	AWPI	14640	100	\$14,640.00	The Effect of Season Upon the Life Cycle and Development of Haemonchus Contortus in Experimentally Infected Lambs	7/24/2017	5/31/2019
8/21/2017	AWD05374	RI Department of Health	Pivarnik,Lori	AWPI	40975	100	\$40,975.00	RI Plan to Enhance produce Safety by Implementing the DFA FSMA produce Safety Rule	7/1/2017	6/30/2018
12/8/2017	AWD06085	University of Massachusetts, Amherst	Pivarnik,Lori	WCPI	109580	30	\$32,874.00	Food Safety Management Training for Small and Emerging Food Businesses: Integrating a Food Safety Culture from Concept to Commercialization	9/1/2017	8/31/2020
12/21/2017	AWD05678	University of Maryland	Rice,Michael	AWPI	8000	100	\$8,000.00	Inventory of Barriers in the Northeast that Limit the Aquaculture Industry	10/1/2017	9/30/2018
12/8/2017	AWD06085	University of Massachusetts, Amherst	Richard,Nicole	AWPI	109580	70	\$76,706.00	Food Safety Management Training for Small and Emerging Food Businesses: Integrating a Food Safety Culture from Concept to Commercialization	9/1/2017	8/31/2020
9/5/2017	AWD03778	US Department of Agriculture	Sebelia,Linda	AWPI	140000	100	\$140,000.00	CELS: INTEGRATING NUTRITION EDUCATION INTO PROVIDENCE FULL SERVICE SCHOOLS IN PROVIDENCE RI	9/1/2013	8/31/2018
10/2/2017	AWD05789	University of Connecticut STORRS	Tewksbury,Elizabeth	AWPI	4000	100	\$4,000.00	Biological Control of the Lily Leaf Beetle	4/1/2017	3/31/2018
7/28/2017	AWD05799	Providence Parks and Recreation	Venturini,Kate	AWPI	6800	100	\$6,800.00	Learning Landscape Field Trips at Roger Williams Park Botanical Center	1/1/2016	12/31/2017
12/1/2017	AWD06250	Kansas State University	Wright,Heidi	AWPI	22496	90	\$20,246.40	RI 2018 4-H Military Partnership Grant	10/1/2017	9/30/2018



## DIVISION OF RESEARCH AND ECONOMIC DEVELOPMENT

### CELS Academic Unit 2

**Total: \$3,764,684.45**

AWARD DATE	AWARD ID	SPONSOR	INVESTIGATOR	ROLE	AWARD AMT	CREDIT	PORTION AMT	TITLE	BEGIN DATE	END DATE
7/18/2017	AWD05905	US Fish and Wildlife Service	August, Peter	AWPI	45203	100	\$45,203.00	CI - Long Island Sound Eelgrass Mapping and Trends Analysis	7/11/2017	6/30/2018
7/20/2017	AWD05894	Rhode Island Division of Planning	August, Peter	AWPI	56000	100	\$56,000.00	CI - FY18 Sustaining and Enhancing Access to the Rhode Island Geographic Information System (RIGIS)	7/1/2017	6/30/2018
7/31/2017	AWD05695	RI Dept of Environ Magt	August, Peter	AWPI	12620	100	\$12,620.00	CI - GPS Elevation Analysis for Tier 3 of Salt Marsh Monitoring and Assessment Plan for the State of Rhode Island	7/14/2017	5/31/2018
8/29/2017	AWD04871	US Dept of Interior	August, Peter	AWPI	92070	25	\$23,017.50	CI - Resource Based Geospatial and Enterprise GIS Support to the NER of the NPS FY15	8/24/2017	9/15/2018
9/20/2017	AWD05886	US Dept of Interior	August, Peter	AWPI	35000	100	\$35,000.00	CI - Development of a Web-Based System to Geoenable NER Parks and Programs	9/15/2017	3/1/2018
10/10/2017	AWD06219	McLaughlin Research Corporation	August, Peter	AWPI	10626	100	\$10,626.00	CI - GIS Support Services for the Naval Undersea Warfare (NUWC/DIVNPT) Center's Marine Environmental Planning Laboratory (MEP) FY18	9/21/2017	12/31/2017
12/5/2017	AWD06260	RI Coastal Res Mgt. Council	August, Peter	AWPI	568807	100	\$568,807.00	CI - Technical Support for Salt Marsh Restoration	11/22/2017	10/31/2018
7/13/2017	AWD04872	US Army Corps of Engineers	Becker, Austin H	AWPI	39700	100	\$39,700.00	CI - Measuring Risk to Inform Resilience: Pilot Study for North Atlantic Medium and High Use Maritime Freight Nodes	6/20/2016	12/19/2017
8/24/2017	AWD04872	US Army Corps of Engineers	Becker, Austin H	AWPI	94555	100	\$94,555.00	CI - Measuring Risk to Inform Resilience: Pilot Study for North Atlantic Medium and High Use Maritime Freight Nodes	6/20/2016	12/19/2018
9/15/2017	AWD05913	RI Office of Housing & Comm Development	Boving, Thomas	WCPI	582913	50	\$291,456.50	Assessment and Modeling of Saltwater Intrusion into Coastal Aquifers of Rhode Island	8/25/2017	8/30/2019
9/12/2017	AWD06148	RI Resource Conservation & Development C	Buffum, William	AWPI	40000	100	\$40,000.00	Forestry Assistance to NRCS	10/1/2017	9/30/2018
7/18/2017	AWD06047	Brown University	Cardace, Dawn	AWPI	8925	100	\$8,925.00	Microbial Attachment Processes in Rock-Powered Ecosystems	6/1/2017	8/31/2017
7/18/2017	AWD06048	Brown University	Cardace, Dawn	AWPI	33453	100	\$33,453.00	Mapping Carbonaceous Matter in Serpentinites: Occurrence and Importance to Astrobiology	9/1/2017	5/31/2018

## DIVISION OF RESEARCH AND ECONOMIC DEVELOPMENT

AWARD DATE	AWARD ID	SPONSOR	INVESTIGATOR	ROLE	AWARD AMT	CREDIT	PORTION AMT	TITLE	BEGIN DATE	END DATE
9/7/2017	AWD04224	University of Colorado Boulder	Cardace,Dawn	AWPI	111895	100	\$111,895.00	Rock Powered Life: Revealing Mechanisms of Energy Transfer from the Lithosphere to the Biosphere	4/29/2015	12/31/2019
8/29/2017	AWD04871	US Dept of Interior	Cressman,Jessica A.	WCPI	92070	25	\$23,017.50	CI - Resource Based Geospatial and Enterprise GIS Supplort to the NER of the NPS FY15	8/24/2017	9/15/2018
7/24/2017	AWD05405	US Dept of Interior	Druschke,Caroline	AWPI	69994	100	\$69,994.00	CI - Science Communication Outreach for the Northeast Coastal and Barrier Network	6/15/2016	9/30/2018
10/6/2017	AWD04699	University of New Hampshire	Druschke,Caroline	WCPI	851581	20	\$170,316.20	CI - RII Track-2 FEC: Strengthening the Scientific Basis for Decision-Making About Dams: Multi-Scale, Coupled-Systems Research on Ecological, Social, and Economic Trade-Offs	8/1/2015	7/31/2019
8/29/2017	AWD04871	US Dept of Interior	Duhaime,Roland	WCPI	92070	25	\$23,017.50	CI - Resource Based Geospatial and Enterprise GIS Supplort to the NER of the NPS FY15	8/24/2017	9/15/2018
8/3/2017	AWD06004	RI Department of Health	Gold,Arthur	WCPI	525000	33	\$173,250.00	CI - Municipal Capacity Training and Public Outreach Source Water Protection Project	7/1/2017	6/30/2020
10/6/2017	AWD04699	University of New Hampshire	Gold,Arthur	AWPI	851581	20	\$170,316.20	CI - RII Track-2 FEC: Strengthening the Scientific Basis for Decision-Making About Dams: Multi-Scale, Coupled-Systems Research on Ecological, Social, and Economic Trade-Offs	8/1/2015	7/31/2019
10/24/2017	AWD06072	RI Dept of Environ Magt	Gold,Arthur	WCPI	20000	10	\$2,000.00	CI - RI Lake and Stream Volunteer-Based Monitoring	9/18/2017	6/30/2019
11/15/2017	AWD06110	US Fish and Wildlife Service	Gold,Arthur	WCPI	99000	10	\$9,900.00	CI - Coastal Resilience Monitoring	10/23/2017	9/30/2022
10/24/2017	AWD06072	RI Dept of Environ Magt	Green,Linda	AWPI	20000	45	\$9,000.00	CI - RI Lake and Stream Volunteer-Based Monitoring	9/18/2017	6/30/2019
10/24/2017	AWD06072	RI Dept of Environ Magt	Herron,Elizabeth	WCPI	20000	45	\$9,000.00	CI - RI Lake and Stream Volunteer-Based Monitoring	9/18/2017	6/30/2019
8/3/2017	AWD06004	RI Department of Health	Joubert,Lorraine	AWPI	525000	34	\$178,500.00	CI - Municipal Capacity Training and Public Outreach Source Water Protection Project	7/1/2017	6/30/2020
10/12/2017	AWD06237	US Department of Agriculture	Kirby,John	AWPI	46448	100	\$46,448.00	Renewable Resources "Extension Act FY 18 (RREA)	10/1/2017	9/30/2019
8/29/2017	AWD04871	US Dept of Interior	Labash,Charles	WCPI	92070	25	\$23,017.50	CI - Resource Based Geospatial and Enterprise GIS Supplort to the NER of the NPS FY15	8/24/2017	9/15/2018
10/6/2017	AWD04699	University of New Hampshire	Lowder,Kelly Addy	WCPI	851581	20	\$170,316.20	CI - RII Track-2 FEC: Strengthening the Scientific Basis for Decision-Making About Dams: Multi-Scale, Coupled-Systems Research on Ecological, Social, and	8/1/2015	7/31/2019

## DIVISION OF RESEARCH AND ECONOMIC DEVELOPMENT

AWARD DATE	AWARD ID	SPONSOR	INVESTIGATOR	ROLE	AWARD AMT	CREDIT	PORTION AMT	TITLE	BEGIN DATE	END DATE
								Economic Trade-Offs		
8/3/2017	AWD06004	RI Department of Health	Mccann,Alyson	WCPI	525000	33	\$173,250.00	CI - Municipal Capacity Training and Public Outreach Source Water Protection Project	7/1/2017	6/30/2020
10/4/2017	AWD05308	National Institute of Health	Mccann,Alyson	OTH	1669877	8.8	\$146,949.17	CI - STEEP - Sources, Transport, Exposure and Effects of Perfluoroalkyl Substances	7/1/2017	3/31/2018
10/26/2017	AWD06189	Rutgers University	Menezes,Sunshine	AWPI	14956	100	\$14,956.00	Building Leadership in Science Communication: SEARCH Professional Development Workshop	9/1/2017	12/31/2017
9/12/2017	AWD04989	University of North Carolina - CH	Opaluch,James	WCPI	238992	24	\$57,358.08	CI - Dept. of Homeland Security Coastal Resilience Center of Excellence Projects	1/1/2016	6/30/2018
12/11/2017	AWD06277	Cape Cod Commission	Opaluch,James	AWPI	75000	100	\$75,000.00	CI - Value of Cape Cod Ecosystem Services	12/1/2017	6/30/2018
8/14/2017	AWD06141	US Fish and Wildlife Service	Paton,Peter	AWPI	60000	100	\$60,000.00	Technical Assistance for Digital VHF Telemetry projects in the Northeast	8/31/2017	1/31/2019
9/22/2017	AWD06011	US Dept of Interior	Paton,Peter	AWPI	166551	60	\$99,930.60	CI - Assessing Movements of Nanotagged Birds Near the Block Island Wind Farm: A Validation Study	9/22/2017	1/22/2020
9/15/2017	AWD05913	RI Office of Housing & Comm Development	Pradhanang,Soni	AWPI	582913	50	\$291,456.50	Assessment and Modeling of Saltwater Intrusion into Coastal Aquifers of Rhode Island	8/25/2017	8/30/2019
11/15/2017	AWD06110	US Fish and Wildlife Service	Still,Brett	AWPI	99000	90	\$89,100.00	CI - Coastal Resilience Monitoring	10/23/2017	9/30/2022
7/24/2017	AWD06092	The Nature Conservancy	Stolt,Mark	AWPI	12000	100	\$12,000.00	Using Thin-Layer Deposition to Manage Sea-Level Rise in Tidal Marshes	3/1/2017	12/31/2017
9/28/2017	AWD06136	US Department of Agriculture	Stolt,Mark	AWPI	100000	100	\$100,000.00	Soil Carbon Stocks, Hydrology, and Hydric Soils of Northeastern Vernal Pools	9/6/2017	9/30/2019
7/20/2017	AWD06126	National Science Foundation	Zawia,Nasser	AWPI	195333	100	\$195,333.00	Felicia Woods, Danielle Perry	8/1/2017	7/31/2022

### CELS Academic Unit 3

**Total: \$3,666,794.80**

## DIVISION OF RESEARCH AND ECONOMIC DEVELOPMENT

AWARD DATE	AWARD ID	SPONSOR	INVESTIGATOR	ROLE	AWARD AMT	CREDIT	PORTION AMT	TITLE	BEGIN DATE	END DATE
7/21/2017	AWD04237	National Science Foundation	Kausch,Albert	AWPI	535399	100	\$535,399.00	Transforming Cereal Genomics: Toolng up for Empowered Cereal Crop Phenotyping Platforms	8/1/2015	7/31/2019
10/7/2017	AWD05839	Donald Danforth Plant Science Center	Kausch,Albert	AWPI	327483	100	\$327,483.00	Biosystems Design to Enable Next-Generation Biofuels and Bioproducts	9/15/2017	9/14/2018
12/22/2017	AWD06317	National Science Foundation	Kolbe,Jason	AWPI	75691	100	\$75,691.00	Hurricane-Induced Natural Selection Reverses the Direction of Morphological Adaptation in Anolis Lizards	12/15/2017	11/30/2018
8/4/2017	AWD04773	National Science Foundation	Lane,Christopher	AWPI	134469	100	\$134,469.00	GoLife: Bringing the Diverse Microbial Clade Stramenopila + Alveolata + Rhizaria (SAR) into a Modern Genomic Content	9/1/2015	8/31/2020
9/15/2017	AWD04885	Restore America's Estuaries	Moseman-Valtierra,Serena	AWPI	3707	100	\$3,707.00	Expanding Blue Carbon Implementation: Increasing GHG Model Application in Tidally Restricted and Restored New England Salt Marshes	1/1/2016	8/31/2018
10/3/2017	AWD06080	Colcom Foundation	Preisser,Evan	AWPI	112000	100	\$112,000.00	A Natural Approach to Hemlock Forest Restoration in Southwestern, PA	9/1/2017	8/31/2019
9/22/2017	AWD06206	US-Israel Binational Foundation	Putnam,Hollie	AWPI	30000	100	\$30,000.00	Function of Acid-Rich Proteins in Coral Biomineralization Across Diverse Climates	9/1/2017	8/31/2018
9/25/2017	AWD03994	Pennsylvania State University	Roberts,Alison	AWPI	108917	100	\$108,917.00	CENTER FOR LIGNOCELLULOSE STRUCTURE AND FORMATION (CLSF)	8/1/2014	7/31/2018
7/17/2017	AWD05988	National Institute of Health	Rothman,Alan	AWPI	2249648	100	\$2,249,648.00	FLAVIVIRUS INFECTIONS: PATHOGENESIS AND PREVENTION	7/1/2017	6/30/2018
9/14/2017	AWD04971	CHEROKEE NATION TECHNOLOGY SOLUTIONS	Rothman,Alan	AWPI	29594	100	\$29,594.00	Development of Immunology Research Agenda To Support the WRAIR...	8/1/2015	3/31/2018
8/24/2017	AWD05393	US Dept of Commerce NOAA	Thornber,Carol	WCPI	299434	20	\$59,886.80	Optimizing Kelp and Oyster Integrated Multi-Trophic Aquaculture: Developing a Spatially Explicit Ecosystem Model	9/1/2017	8/31/2019

### Dean Environment Life Science

**Total: \$2,028,284.00**

AWARD DATE	AWARD ID	SPONSOR	INVESTIGATOR	ROLE	AWARD AMT	CREDIT	PORTION AMT	TITLE	BEGIN DATE	END DATE
10/1/2017	AWD05614	US Department of Agriculture	Kirby,John	AWPI	4351	100	\$4,351.00	FY 17 Coop Extension 3(b)3(c)	10/1/2016	9/30/2021

## DIVISION OF RESEARCH AND ECONOMIC DEVELOPMENT

AWARD DATE	AWARD ID	SPONSOR	INVESTIGATOR	ROLE	AWARD AMT	CREDIT	PORTION AMT	TITLE	BEGIN DATE	END DATE
10/1/2017	AWD05583	US Department of Agriculture	Kirby,John	AWPI	367959	100	\$367,959.00	Hatch Regional FY 17	5/1/2017	9/30/2018
11/9/2017	AWD06292	US Department of Agriculture	Kirby,John	AWPI	1137893	100	\$1,137,893.00	FY18 Cooperative Extension 3(b) 3(c)	10/1/2017	6/30/2022
11/25/2017	AWD06297	US Department of Agriculture	Kirby,John	AWPI	518081	100	\$518,081.00	Hatch Regional FY 18	10/1/2017	9/30/2018

### Env. and Nat. Res. Economics

**Total: \$340,632.40**

AWARD DATE	AWARD ID	SPONSOR	INVESTIGATOR	ROLE	AWARD AMT	CREDIT	PORTION AMT	TITLE	BEGIN DATE	END DATE
10/6/2017	AWD04699	University of New Hampshire	Guilfoos,Todd	WCPI	851581	20	\$170,316.20	CI - RII Track-2 FEC: Strengthening the Scientific Basis for Decision-Making About Dams: Multi-Scale, Coupled-Systems Research on Ecological, Social, and Economic Trade-Offs	8/1/2015	7/31/2019
10/6/2017	AWD04699	University of New Hampshire	Uchida,Emi	WCPI	851581	20	\$170,316.20	CI - RII Track-2 FEC: Strengthening the Scientific Basis for Decision-Making About Dams: Multi-Scale, Coupled-Systems Research on Ecological, Social, and Economic Trade-Offs	8/1/2015	7/31/2019

### Fish-Animal-Vet-Science

**Total: \$791,434.57**

AWARD DATE	AWARD ID	SPONSOR	INVESTIGATOR	ROLE	AWARD AMT	CREDIT	PORTION AMT	TITLE	BEGIN DATE	END DATE
10/12/2017	AWD03911	University of Connecticut Avery Point	Bengtson,David A	AWPI	24997	100	\$24,997.00	ALTERNATIVE FEEDS AND PROCESSING FOR FRESHWATER FISH	10/1/2013	2/28/2018
10/26/2017	AWD03136	GreenFins,LLC	Bradley,Terence	AWPI	735025	100	\$735,025.00	Investigation of methods for culture of bluefin tuna	9/1/2010	9/29/2020
11/28/2017	AWD04129	US Department of Agriculture	Rhodes III,Richard C	WCPI	314125.75	10	\$31,412.57	CI- WEST AFRICA ANALYTICAL SUPPORT SERVICES AND EVALUATIONS FOR	3/1/2014	3/19/2019

## DIVISION OF RESEARCH AND ECONOMIC DEVELOPMENT

### Plant Science

**Total: \$116,132.00**

AWARD DATE	AWARD ID	SPONSOR	INVESTIGATOR	ROLE	AWARD AMT	CREDIT	PORTION AMT	TITLE	BEGIN DATE	END DATE
10/2/2017	AWD05976	US Department of Agriculture	Casagrande,Richard	AWPI	116132	50	\$58,066.00	Extension Implementation Program for Rhode Island: Novel Pests, Innovative Approaches	9/1/2017	8/31/2018
10/2/2017	AWD05976	US Department of Agriculture	Faubert,Heather	WCPI	116132	25	\$29,033.00	Extension Implementation Program for Rhode Island: Novel Pests, Innovative Approaches	9/1/2017	8/31/2018
10/2/2017	AWD05976	US Department of Agriculture	Tewksbury,Elizabeth	WCPI	116132	25	\$29,033.00	Extension Implementation Program for Rhode Island: Novel Pests, Innovative Approaches	9/1/2017	8/31/2018

## DIVISION OF RESEARCH AND ECONOMIC DEVELOPMENT

### Awards for Graduate School of Oceanography

From: 7/1/2017 To: 12/31/2017

Investigator Award Total: \$13,645,956.87

#### GSO Coastal Institute

**Total: \$167,958.80**

AWARD DATE	AWARD ID	SPONSOR	INVESTIGATOR	ROLE	AWARD AMT	CREDIT	PORTION AMT	TITLE	BEGIN DATE	END DATE
10/4/2017	AWD05308	National Institute of Health	Rohr,Nicole	WCPI	1669877	4.55	\$75,979.40	CI - STEEP - Sources, Transport, Exposure and Effects of Perfluoroalkyl Substances	7/1/2017	3/31/2018
8/31/2017	AWD06176	US Dept of Interior	Swift,Judith	AWPI	16000	100	\$16,000.00	CI - CESU Host - Leadership, Coordination and Administrative Oversight for the North Atlantic Coast Cooperative	8/30/2017	12/31/2020
10/4/2017	AWD05308	National Institute of Health	Swift,Judith	WCPI	1669877	4.55	\$75,979.40	CI - STEEP - Sources, Transport, Exposure and Effects of Perfluoroalkyl Substances	7/1/2017	3/31/2018

#### GSO Coastal Resources Center

**Total: \$3,849,534.63**

AWARD DATE	AWARD ID	SPONSOR	INVESTIGATOR	ROLE	AWARD AMT	CREDIT	PORTION AMT	TITLE	BEGIN DATE	END DATE
11/17/2017	AWD04536	US Agcy for International Dev.	Crawford,Brian	AWPI	1000000	50	\$500,000.00	CI - Ghana Sustainable Fisheries Management Project	10/22/2014	10/31/2019
10/3/2017	AWD06155	RI Coastal Res Mgt.Council	Crean,Teresa	AWPI	189900	50	\$94,950.00	CI - HUD V BEACH SAMP	10/1/2017	1/28/2019
12/22/2017	AWD05699	RI Coastal Res Mgt.Council	Crean,Teresa	AWPI	137467	32	\$43,989.44	CI - Developing the Rhode Island Coastal Environmental Risk Index to Inform State and Local Planning and Decision Making	10/1/2017	12/31/2018
10/19/2017	AWD05931	The Cadmus Group, Inc.	Kent,Karen	AWPI	1029	50	\$514.50	CI - Environment Sector Review	4/18/2017	4/30/2018
11/21/2017	AWD05531	US Agcy for International Dev.	Kent,Karen	WCPI	1825838.16	50	\$912,919.08	CI - GSO/CI Comfish Plus Project	10/1/2016	9/30/2018

## DIVISION OF RESEARCH AND ECONOMIC DEVELOPMENT

AWARD DATE	AWARD ID	SPONSOR	INVESTIGATOR	ROLE	AWARD AMT	CREDIT	PORTION AMT	TITLE	BEGIN DATE	END DATE
11/28/2017	AWD04129	US Department of Agriculture	Kent,Karen L	AWPI	314125.75	90	\$282,713.17	CI- WEST AFRICA ANALYTICAL SUPPORT SERVICES AND EVALUATIONS FOR	3/1/2014	3/19/2019
8/25/2017	AWD05481	RI Coastal Res Mgt.Council	Mccann,Jennifer	AWPI	12148	100	\$12,148.00	CI - Update and Revision of the Metro Bay SAMP Documents and 1978 Energy Amendments	7/1/2016	7/31/2018
11/17/2017	AWD04536	US Agcy for International Dev.	Robadue Jr,Donald	WCPI	1000000	50	\$500,000.00	CI - Ghana Sustainable Fisheries Management Project	10/22/2014	10/31/2019
10/10/2017	AWD06103	RI Coastal Res Mgt.Council	Rubinoff,Pamela	AWPI	20000	100	\$20,000.00	CI - To Complete the RI Beach SAMP Document and Provide Outreach and Engagement to Communicate Information	11/1/2017	1/31/2018
10/20/2017	AWD06240	Eastern Research Group	Smythe,Tiffany	AWPI	42273	100	\$42,273.00	CI - Partner Network Analysis of Agencies and Organizations that Collaborate with the National Winter Center	9/1/2017	5/31/2018
11/21/2017	AWD05531	US Agcy for International Dev.	Tobey,James	AWPI	1825838.16	50	\$912,919.08	CI - GSO/CI Comfish Plus Project	10/1/2016	9/30/2018
10/19/2017	AWD05931	The Cadmus Group, Inc.	Torell,Elin	WCPI	1029	50	\$514.50	CI - Environment Sector Review	4/18/2017	4/30/2018
12/28/2017	AWD06143	Playa Linda Beach Resort	Torell,Elin	WCPI	28980	50	\$14,490.00	Assessing the Water Quality and Underlying Factors at the Playa Linda Resort, Aruba	8/4/2017	9/30/2017
11/9/2017	AWD04495	PACT	Torell,Elin C	AWPI	117872	100	\$117,872.00	CI- FISHERIES INTEGRATION OF SOCIETY AND HABITS FISH	9/10/2014	8/9/2019
12/14/2017	AWD04495	PACT	Torell,Elin C	AWPI	394231.86	100	\$394,231.86	CI- FISHERIES INTEGRATION OF SOCIETY AND HABITS FISH	9/10/2014	8/9/2019

### GSO Facilities

**Total: \$310,000.00**

AWARD DATE	AWARD ID	SPONSOR	INVESTIGATOR	ROLE	AWARD AMT	CREDIT	PORTION AMT	TITLE	BEGIN DATE	END DATE
8/2/2017	AWD05041	AIR FORCE RESEARCH LABORATORY	Bao,Xueyang	WCPI	35000	30	\$10,500.00	Integrated Deterministic and Stochastic Full-Waveform Earth Models for Broadband Wave Propagation and Prediction	5/10/2016	10/31/2018
8/2/2017	AWD05041	AIR FORCE RESEARCH LABORATORY	Bao,Xueyang	WCPI	145000	30	\$43,500.00	Integrated Deterministic and Stochastic Full-Waveform Earth Models for Broadband Wave Propagation and Prediction	5/10/2016	10/31/2018



## DIVISION OF RESEARCH AND ECONOMIC DEVELOPMENT

AWARD DATE	AWARD ID	SPONSOR	INVESTIGATOR	ROLE	AWARD AMT	CREDIT	PORTION AMT	TITLE	BEGIN DATE	END DATE
9/21/2017	AWD05041	AIR FORCE RESEARCH LABORATORY	Bao,Xueyang	WCPI	20000	30	\$6,000.00	Integrated Deterministic and Stochastic Full-Waveform Earth Models for Broadband Wave Propagation and Prediction	5/10/2016	12/31/2017
10/5/2017	AWD05041	AIR FORCE RESEARCH LABORATORY	Bao,Xueyang	WCPI	50000	30	\$15,000.00	Integrated Deterministic and Stochastic Full-Waveform Earth Models for Broadband Wave Propagation and Prediction	5/10/2016	12/31/2017
7/31/2017	AWD04094	US Dept of Commerce NOAA	Murray,Cynthia J	AWPI	235000	100	\$235,000.00	A Proposal for the Support of Continuing and New Activities of the National Sea Grant Library	3/1/2014	2/28/2018

### GSO Faculty

**Total: \$8,249,714.44**

AWARD DATE	AWARD ID	SPONSOR	INVESTIGATOR	ROLE	AWARD AMT	CREDIT	PORTION AMT	TITLE	BEGIN DATE	END DATE
7/18/2017	AWD04236	National Science Foundation	Alberts,Jonathan	AWPI	154520	50	\$77,260.00	UNIVERSIEY-NATIONAL OCEANOGRAPHIC LABORATORY SYSTEM	5/1/2014	4/30/2019
9/26/2017	AWD04236	National Science Foundation	Alberts,Jonathan	AWPI	107647	50	\$53,823.50	UNIVERSIEY-NATIONAL OCEANOGRAPHIC LABORATORY SYSTEM	5/1/2014	4/30/2019
8/22/2017	AWD05851	National Science Foundation	Beinart,Roxanne	AWPI	585618	100	\$585,618.00	The Impact of Symbiont-Larval Interactions on Species Distribution Across Southwestern Pacific Hydrothermal Vents	9/1/2018	8/31/2021
7/7/2017	AWD05119	National Science Foundation	Coleman,Dwight	WCPI	746400	15	\$111,960.00	CI - Northwest Passage Project	7/1/2016	8/31/2019
7/13/2017	AWD06077	OCEAN EXPLORATION TRUST	Coleman,Dwight	AWPI	85000	100	\$85,000.00	OET Partnership with the URI Inner Space Center to Support Systematic Ocean Exploration	7/1/2017	6/30/2018
7/21/2017	AWD06091	Naval Undersea Warfare Center	Coleman,Dwight	AWPI	20000	100	\$20,000.00	NUWC Collaboration with the URI Inner Space Center for Educational Outreach	7/22/2017	7/21/2018
8/18/2017	AWD06144	OCEAN EXPLORATION TRUST	Coleman,Dwight	AWPI	118000	100	\$118,000.00	OET Partnership with the URI Inner Space Center to Support Systematic Ocean Exploration - 2017-2018 E/V Nautilus Season	8/1/2017	12/31/2017
8/22/2017	AWD05119	National Science Foundation	Coleman,Dwight	WCPI	113754	15	\$17,063.10	CI - Northwest Passage Project	7/1/2016	8/31/2019
9/1/2017	AWD06129	US Dept of Commerce NOAA	Coleman,Dwight	AWPI	300000	100	\$300,000.00	NOAA_OER Partnership with the URI Inner Space Center to Support Systematic Ocean Exploration - 2017 and 2018	9/1/2017	8/31/2019

## DIVISION OF RESEARCH AND ECONOMIC DEVELOPMENT

AWARD DATE	AWARD ID	SPONSOR	INVESTIGATOR	ROLE	AWARD AMT	CREDIT	PORTION AMT	TITLE	BEGIN DATE	END DATE
7/28/2017	AWD03707	US Dept of Interior	Collie,Jeremy	AWPI	400000	50	\$200,000.00	CI SOUTHERN NEW ENGLAND VENTLESS TRAP SURVEY	7/3/2013	7/15/2019
8/10/2017	AWD05378	NatAeronautics & Space Admin	Cornillon,Peter	AWPI	130751	60	\$78,450.60	Improved Spatial Resolution Sea Surface Temperature Fields from AMSR-E	4/18/2016	4/17/2019
7/18/2017	AWD04236	National Science Foundation	Desilva,Annette	WCPI	154520	50	\$77,260.00	UNIVERSIEY-NATIONAL OCEANOGRAPHIC LABORATORY SYSTEM	5/1/2014	4/30/2019
9/26/2017	AWD04236	National Science Foundation	Desilva,Annette	WCPI	107647	50	\$53,823.50	UNIVERSIEY-NATIONAL OCEANOGRAPHIC LABORATORY SYSTEM	5/1/2014	4/30/2019
8/21/2017	AWD04733	National Science Foundation	Donohue,Kathleen	WCPI	75666	50	\$37,833.00	Collab. Research: The Oleander Project High Resolution Observations of the Dynamic Ocean Between New Jersey and Bermuda	9/15/2015	8/31/2020
9/12/2017	AWD04989	University of North Carolina - CH	Ginis,Isaac	WCPI	238992	52	\$124,275.84	CI - Dept. of Homeland Security Coastal Resilience Center of Excellence Projects	1/1/2016	6/30/2018
9/28/2017	AWD06102	National Science Foundation	Graham,Rebecca	AWPI	390647	100	\$390,647.00	Collab. Research: Tracking the Subtropical Front Across the Mid Pleistocene Transition Using Sea Surface Temperature and Nutrients	9/1/2017	8/31/2020
8/8/2017	AWD04940	US Dept of Commerce NOAA	Kenney,Robert D	AWPI	99999	100	\$99,999.00	Maintain and Curate the North Atlantic Right Whale Sightings Database.	9/1/2015	8/31/2018
8/24/2017	AWD05393	US Dept of Commerce NOAA	Kincaid,Christopher	WCPI	299434	20	\$59,886.80	Optimizing Kelp and Oyster Integrated Multi-Trophic Aquaculture: Developing a Spatially Explicit Ecosystem Model	9/1/2017	8/31/2019
12/21/2017	AWD06314	US Army Corps of Engineers	Kincaid,Christopher	AWPI	34154.75	100	\$34,154.75	CI - Hydrodynamic Modeling and Analysis Services for the U.S. Army Corps of Engineers-New England District in Support of Edgewood Shoals, Providence, RI	12/19/2017	9/18/2018
7/28/2017	AWD03707	US Dept of Interior	King,John	WCPI	400000	50	\$200,000.00	CI SOUTHERN NEW ENGLAND VENTLESS TRAP SURVEY	7/3/2013	7/15/2019
10/27/2017	AWD06251	Town of South Kingstown	King,John	AWPI	25000	68	\$17,000.00	CI - Green Hill Pond Study - Phase 1: Studies to Support the Modeling Effort	11/1/2017	6/30/2018
9/29/2017	AWD04109	National Science Foundation	King,John W	AWPI	1535	100	\$1,535.00	Collab. Research: Sediment Pathways, Sedimentation Processes, and Structural Growth Along the Tohoku Segment of the Japan Subduction Margin: Role of Megathrust Earthquakes	8/1/2014	7/31/2017
10/2/2017	AWD06210	Environment & Climate Change Canada	Lohmann,Rainer	AWPI	6543	100	\$6,543.00	Preparation and Analysis of Passive Samplers for Organic Contaminants in Lakes and Seawater	8/15/2017	3/31/2018
10/4/2017	AWD05308	National Institute of Health	Lohmann,Rainer	AWPI	1669877	38.1	\$636,223.13	CI - STEEP - Sources, Transport, Exposure and Effects of Perfluoroalkyl Substances	7/1/2017	3/31/2018

## DIVISION OF RESEARCH AND ECONOMIC DEVELOPMENT

AWARD DATE	AWARD ID	SPONSOR	INVESTIGATOR	ROLE	AWARD AMT	CREDIT	PORTION AMT	TITLE	BEGIN DATE	END DATE
10/11/2017	AWD05865	Hudson River Foundation	Lohmann,Rainer	AWPI	265845.62	100	\$265,845.62	Contaminant Assessment and Reduction Program II	3/23/2017	3/23/2020
7/7/2017	AWD05119	National Science Foundation	Loose,Brice	WCPI	746400	15	\$111,960.00	CI - Northwest Passage Project	7/1/2016	8/31/2019
8/22/2017	AWD05119	National Science Foundation	Loose,Brice	WCPI	113754	15	\$17,063.10	CI - Northwest Passage Project	7/1/2016	8/31/2019
10/4/2017	AWD05970	NatAeronautics & Space Admin	Menden-Deuer,Susanne	AWPI	100000	50	\$50,000.00	CI - Quantifying Plankton Predation Rates and Effects on Primary Production, Phytoplankton Community Composition, Size Spectra and Potential for Export	9/19/2017	9/18/2020
10/6/2017	AWD05482	Woods Hole Oce Institution	Menden-Deuer,Susanne	AWPI	87905	50	\$43,952.50	CI - LTER: Linking Pelagic Community Structure with Ecosystem Dynamics and Production Regimes on the Changing Northeast US Shelf	9/1/2017	8/31/2022
11/3/2017	AWD05970	NatAeronautics & Space Admin	Menden-Deuer,Susanne	AWPI	261550	50	\$130,775.00	CI - Quantifying Plankton Predation Rates and Effects on Primary Production, Phytoplankton Community Composition, Size Spectra and Potential for Export	9/19/2017	9/18/2020
8/17/2017	AWD05945	US of Office of Naval Research	Omand,Melissa	AWPI	40151	100	\$40,151.00	Penetrative Flux, Barrier Layer Collapse, and ISO Feedbacks	8/1/2017	7/31/2019
10/18/2017	AWD05955	Skidmore College	Omand,Melissa	AWPI	58492.89	100	\$58,492.89	Linking Sinking Particle Chemistry and Biology with Changes in the Magnitude and Efficiency of Carbon Export into the Deep Ocean	9/8/2017	9/7/2018
11/21/2017	AWD05955	Skidmore College	Omand,Melissa	AWPI	38949.11	100	\$38,949.11	Linking Sinking Particle Chemistry and Biology with Changes in the Magnitude and Efficiency of Carbon Export into the Deep Ocean	9/8/2017	9/7/2018
11/30/2017	AWD05944	University of Washington	Omand,Melissa	AWPI	15342	100	\$15,342.00	AMPLIFY: Autonomous Monitoring of Export Pathways: Lagrangian Insight from Femtoseconds to Years	9/8/2017	9/7/2018
12/19/2017	AWD05322	Woods Hole Oce Institution	Omand,Melissa	AWPI	20537	100	\$20,537.00	Modeling Studies for EXPORTS in a Dynamic Ocean Environment	8/25/2016	8/24/2018
10/17/2017	AWD05354	NERACOOS	Oviatt,Candace	WCPI	60000	50	\$30,000.00	CI - Data Transfer to NERACOOS from NBFSMN Stations Operated by URI/GSO	6/1/2016	5/31/2018
7/5/2017	AWD05946	National Science Foundation	Palter,Jaime	AWPI	290962	100	\$290,962.00	Analysis Phase of the Lagrangian Isopycnal Dispersion Experiment (AP-LIDEX)	9/1/2017	8/30/2020
10/27/2017	AWD06251	Town of South Kingstown	Pockalny,Robert	WCPI	25000	32	\$8,000.00	CI - Green Hill Pond Study - Phase 1: Studies to Support the Modeling Effort	11/1/2017	6/30/2018
8/10/2017	AWD05378	NatAeronautics & Space Admin	Puggioni,Gavino	WCPI	130751	40	\$52,300.40	Improved Spatial Resolution Sea Surface Temperature Fields from AMSR-E	4/18/2016	4/17/2019

## DIVISION OF RESEARCH AND ECONOMIC DEVELOPMENT

AWARD DATE	AWARD ID	SPONSOR	INVESTIGATOR	ROLE	AWARD AMT	CREDIT	PORTION AMT	TITLE	BEGIN DATE	END DATE
7/24/2017	AWD06093	US Dept of Commerce NOAA	Roman,Christopher	AWPI	58214	100	\$58,214.00	CI Use of a Lagrangian Camera Float in Association with Surveys to Examine Benthic Habitats and Associated Fish: Operational Test to Improving Survey-Based Estimates of Abundance	7/19/2017	8/31/2018
9/1/2017	AWD05752	US Dept of Commerce NOAA	Roman,Christopher	AWPI	290621	100	\$290,621.00	Integration of Acoustic Echosounding into the Wire Flyer Profiling Vehicle to Investigate Scattering Layer Distribution and Oxygen Coupling	9/1/2017	8/31/2019
8/21/2017	AWD04733	National Science Foundation	Rosby,Hans T	AWPI	75666	50	\$37,833.00	Collab. Research: The Oleander Project High Resolution Observations of the Dynamic Ocean Between New Jersey and Bermuda	9/15/2015	8/31/2020
9/21/2017	AWD05500	National Science Foundation	Rothstein,Lewis	WCPI	4535519	25	\$1,133,879.75	RII Track-1: Enhancing Rhode Island's Coastal Environment to Enable Growth in a Blue Economy	8/1/2017	7/31/2022
10/4/2017	AWD05970	NatAeronautics & Space Admin	Rynearson,Tatiana	WCPI	100000	50	\$50,000.00	CI - Quantifying Plankton Predation Rates and Effects on Primary Production, Phytoplankton Community Composition, Size Spectra and Potential for Export	9/19/2017	9/18/2020
10/6/2017	AWD05482	Woods Hole Oce Institution	Rynearson,Tatiana	WCPI	87905	50	\$43,952.50	CI - LTER: Linking Pelagic Community Structure with Ecosystem Dynamics and Production Regimes on the Changing Northeast US Shelf	9/1/2017	8/31/2022
11/3/2017	AWD05970	NatAeronautics & Space Admin	Rynearson,Tatiana	WCPI	261550	50	\$130,775.00	CI - Quantifying Plankton Predation Rates and Effects on Primary Production, Phytoplankton Community Composition, Size Spectra and Potential for Export	9/19/2017	9/18/2020
7/7/2017	AWD05119	National Science Foundation	Scowcroft,Gail	AWPI	746400	70	\$522,480.00	CI - Northwest Passage Project	7/1/2016	8/31/2019
7/18/2017	AWD05136	US of Office of Naval Research	Scowcroft,Gail	AWPI	97545	100	\$97,545.00	Discovery of Sound in the Sea	1/1/2016	12/31/2017
8/22/2017	AWD05119	National Science Foundation	Scowcroft,Gail	AWPI	113754	70	\$79,627.80	CI - Northwest Passage Project	7/1/2016	8/31/2019
12/5/2017	AWD06157	US of Office of Naval Research	Scowcroft,Gail	AWPI	10000	100	\$10,000.00	Discovery of Sound in the Sea 2018-2019	1/1/2018	12/31/2019
8/2/2017	AWD05041	AIR FORCE RESEARCH LABORATORY	Shen,Yang	AWPI	145000	70	\$101,500.00	Integrated Deterministic and Stochastic Full-Waveform Earth Models for Broadband Wave Propagation and Prediction	5/10/2016	10/31/2018
8/2/2017	AWD05041	AIR FORCE RESEARCH LABORATORY	Shen,Yang	AWPI	35000	70	\$24,500.00	Integrated Deterministic and Stochastic Full-Waveform Earth Models for Broadband Wave Propagation and Prediction	5/10/2016	10/31/2018
9/21/2017	AWD05041	AIR FORCE RESEARCH LABORATORY	Shen,Yang	AWPI	20000	70	\$14,000.00	Integrated Deterministic and Stochastic Full-Waveform Earth Models for Broadband Wave Propagation and Prediction	5/10/2016	12/31/2017

## DIVISION OF RESEARCH AND ECONOMIC DEVELOPMENT

AWARD DATE	AWARD ID	SPONSOR	INVESTIGATOR	ROLE	AWARD AMT	CREDIT	PORTION AMT	TITLE	BEGIN DATE	END DATE
9/21/2017	AWD05616	AIR FORCE RESEARCH LABORATORY	Shen,Yang	AWPI	78000	95	\$74,100.00	Pinpointing Seismic Events with Body Waves Scattered by Topography Near the Source Region	5/31/2017	8/31/2019
10/5/2017	AWD05041	AIR FORCE RESEARCH LABORATORY	Shen,Yang	AWPI	50000	70	\$35,000.00	Integrated Deterministic and Stochastic Full-Waveform Earth Models for Broadband Wave Propagation and Prediction	5/10/2016	12/31/2017
12/28/2017	AWD06143	Playa Linda Beach Resort	Spivack,Arthur	WCPI	28980	50	\$14,490.00	Assessing the Water Quality and Underlying Factors at the Playa Linda Resort, Aruba	8/4/2017	9/30/2017
7/7/2017	AWD06137	Commonwealth of Massachusetts	Stoffel,Heather	AWPI	114220	100	\$114,220.00	CI- EXPANSION OF THE NARRAGANSETT BAY FIXED SITE YEAR 2	7/1/2017	6/30/2018
10/17/2017	AWD05354	NERACOOS	Stoffel,Heather	AWPI	60000	50	\$30,000.00	CI - Data Transfer to NERACOOS from NBFSMN Stations Operated by URI/GSO	6/1/2016	5/31/2018
10/25/2017	AWD05001	Rutgers University	Ullman,David	AWPI	5287.55	100	\$5,287.55	CONTINUATION OF PREVIOUS PO 2384074	6/1/2016	5/31/2018
9/21/2017	AWD05616	AIR FORCE RESEARCH LABORATORY	Wang,Nian	WCPI	78000	5	\$3,900.00	Pinpointing Seismic Events with Body Waves Scattered by Topography Near the Source Region	5/31/2017	8/31/2019
8/18/2017	AWD05951	KOREA INSTITUTE OF OCEAN SCIENCE & TECHN	Watts,D Randolph	AWPI	62537	100	\$62,537.00	Keep Studies by Korean Institute of Ocean Science and Technology (KIOST): 1 combined CRIES	4/1/2017	3/31/2020
8/18/2017	AWD05949	KOREA INSTITUTE OF OCEAN SCIENCE & TECHN	Watts,D Randolph	AWPI	43000	100	\$43,000.00	Kuroshio Observations by Korean Institute of Ocean Science (KIOST): 1 PIES, CM-ready	4/1/2017	3/31/2020
8/18/2017	AWD05950	KOREA INSTITUTE OF OCEAN SCIENCE & TECHN	Watts,D Randolph	AWPI	19537	100	\$19,537.00	Kuroshio Observations by Korean Institute of Ocean Science and Technology (KIOST): Current Meter Option	4/1/2017	3/31/2020
8/18/2017	AWD06015	University of Cape Town	Watts,D Randolph	AWPI	5832	100	\$5,832.00	Release Rearing Kits for Agulhas-South Atlantic Studies	5/1/2017	4/30/2020
9/14/2017	AWD05746	SEISMIC MARINE TECHNOLOGY LIMITED	Watts,D Randolph	AWPI	1450	100	\$1,450.00	Observing the North Equatorial Current Using 2 PIES	12/20/2016	12/19/2019
10/4/2017	AWD06216	University of Gothenberg	Watts,D Randolph	AWPI	17300	100	\$17,300.00	Antarctic Glacier-Base Studies Using Four TPOPs	9/27/2017	8/30/2020
10/25/2017	AWD06252	University of Washington	Watts,D Randolph	AWPI	7553	100	\$7,553.00	Repair and Upgrade 1 PIES for University of Washington	10/15/2017	9/30/2020

## DIVISION OF RESEARCH AND ECONOMIC DEVELOPMENT

AWARD DATE	AWARD ID	SPONSOR	INVESTIGATOR	ROLE	AWARD AMT	CREDIT	PORTION AMT	TITLE	BEGIN DATE	END DATE
10/27/2017	AWD06256	University of Miami	Watts,D Randolph	AWPI	57800	100	\$57,800.00	Upgrade 5 URI CPIES for University of Miami Deployment Across Agulhas Current	8/1/2017	7/31/2018
11/17/2017	AWD06293	GEOMAR HELMHOLTZ CENTRE FOR OCEAN	Watts,D Randolph	AWPI	540	100	\$540.00	PIES Accessories - Partial Release Kits for GEOMAR	11/14/2017	11/13/2019
8/7/2017	AWD05476	National Science Foundation	Wei,Meng	AWPI	601553	100	\$601,553.00	Career: Integration of Rate-and-State Friction and Viscoelastic Flow to Model Earthquake Cycles on an Oceanic Transform Fault	8/1/2017	7/31/2022

### GSO Marine Office

**Total: \$983,565.00**

AWARD DATE	AWARD ID	SPONSOR	INVESTIGATOR	ROLE	AWARD AMT	CREDIT	PORTION AMT	TITLE	BEGIN DATE	END DATE
10/3/2017	AWD06214	John Hopkins University	Glennon,Thomas	AWPI	163845	100	\$163,845.00	Johns Hopkins / APL Charter of Support Vessel to Support Sea Test October 2017	10/3/2017	10/13/2017
12/14/2017	AWD06084	Fisheries and Oceans Canada DFO	Glennon,Thomas	AWPI	819720	100	\$819,720.00	Vessel and Crew to Support the Fisheries and Oceans Canada (DFO), Maritimes Region, Ocean Monitoring Program - Fall 2017	10/18/2017	12/31/2017

### GSO Rhode Island Sea Grant

**Total: \$85,184.00**

AWARD DATE	AWARD ID	SPONSOR	INVESTIGATOR	ROLE	AWARD AMT	CREDIT	PORTION AMT	TITLE	BEGIN DATE	END DATE
8/17/2017	AWD03971	US Dept of Commerce NOAA	Nixon,Dennis W	AWPI	25000	100	\$25,000.00	RHODE ISLAND SEA GRANT 2014-2018 OMNIBUS	4/1/2017	1/31/2019
10/5/2017	AWD03971	US Dept of Commerce NOAA	Nixon,Dennis W	AWPI	60184	100	\$60,184.00	RHODE ISLAND SEA GRANT 2014-2018 OMNIBUS	4/1/2017	1/31/2019

## DIVISION OF RESEARCH AND ECONOMIC DEVELOPMENT

### Awards for College of Health Sciences

From: 7/1/2017 To: 12/31/2017

Investigator Award Total: \$2,611,894.46

#### Cancer Prevention Res. Ctr

**Total: \$543,207.93**

AWARD DATE	AWARD ID	SPONSOR	INVESTIGATOR	ROLE	AWARD AMT	CREDIT	PORTION AMT	TITLE	BEGIN DATE	END DATE
9/27/2017	AWD05074	Brown University	Laforge,Robert	AWPI	89485	100	\$89,485.00	Motivational and Contextual Influences on Patterns of Simultaneous Alcohol and Marijuana Use: A Daily Assessment Study	5/1/2017	4/30/2018
10/5/2017	AWD04804	RI Dept of Behavioral Healthcare, Develop	Paiva,Andrea	AWPI	81270	100	\$81,270.00	BHDDH School Survey	7/1/2017	6/30/2018
9/12/2017	AWD04989	University of North Carolina - CH	Prochaska,James O	WCPI	238992	24	\$57,358.08	CI - Dept. of Homeland Security Coastal Resilience Center of Excellence Projects	1/1/2016	6/30/2018
8/16/2017	AWD05816	National Science Foundation	Redding,Colleen	WCPI	99439	15	\$14,915.85	SCC-Planning: Smart and Connected Residential Water Quality Community	8/15/2017	7/31/2018
9/13/2017	AWD05091	Yale University	Redding,Colleen	AWPI	125133	100	\$125,133.00	Enhancing Engagement in Advance Care Planning	9/27/2016	6/30/2018
10/2/2017	AWD05088	Brown University	Spillane,Nichea	AWPI	13417	100	\$13,417.00	Positive Psychotherapy for Smoking Cessation Enhanced with Text Messaging: A Randomized Controlled Trial	7/1/2017	6/30/2018
9/7/2017	AWD04811	Kent Center	Stein,Lynda	AWPI	12500	100	\$12,500.00	Healthy Transitions - The Kent Center	10/1/2015	9/29/2018
9/15/2017	AWD04809	RI Dept of Behavioral Healthcare, Develop	Stein,Lynda	AWPI	124060	100	\$124,060.00	Healthy Transitions - BHDDH	1/1/2015	9/29/2018
10/12/2017	AWD04810	Community Care Alliance	Stein,Lynda	AWPI	12500	100	\$12,500.00	Healthy Transitions - Community Care Alliance	10/1/2015	9/29/2018
10/13/2017	AWD05396	The Miriam Hospital	Stein,Lynda	AWPI	12569	100	\$12,569.00	Evaluating the Implementation and Impact of a Novel Medication-Assisted Treatment Program in a Unified Jail and Prison System	9/1/2017	8/31/2018

## DIVISION OF RESEARCH AND ECONOMIC DEVELOPMENT

### Food Science And Nutrition

**Total: \$5,344.00**

AWARD DATE	AWARD ID	SPONSOR	INVESTIGATOR	ROLE	AWARD AMT	CREDIT	PORTION AMT	TITLE	BEGIN DATE	END DATE
10/13/2017	AWD04558	US Department of Agriculture	Kirby,John D	AWPI	5344	100	\$5,344.00	FY2015 3B3C Formula Funds	10/1/2014	9/30/2019

### Human Development & Family Stu

**Total: \$69,458.00**

AWARD DATE	AWARD ID	SPONSOR	INVESTIGATOR	ROLE	AWARD AMT	CREDIT	PORTION AMT	TITLE	BEGIN DATE	END DATE
10/2/2017	AWD05483	Rhode Island College	Mccurdy,Karen	AWPI	19458	100	\$19,458.00	Recruitment and Retention of Early Childhood Professionals in Early Intervention Programs	7/1/2016	9/30/2017
9/27/2017	AWD06016	The Spencer Foundation	Vaccaro,Annemarie	PI	50000	100	\$50,000.00	IIHI - Making Disability Visible in Higher Education Research: Addressing Quantitative, Qualitative, and Theoretical Limitations	11/1/2017	10/31/2018

### Nutrition & Food Sciences

**Total: \$869,918.53**

AWARD DATE	AWARD ID	SPONSOR	INVESTIGATOR	ROLE	AWARD AMT	CREDIT	PORTION AMT	TITLE	BEGIN DATE	END DATE
10/12/2017	AWD06221	US Department of Agriculture	Kirby,John	AWPI	385645	100	\$385,645.00	EFNEP FY 2018	10/1/2017	9/30/2022
8/3/2017	AWD05509	RI Dept of Human Services	Sebelia,Linda	AWPI	359470	100	\$359,470.00	RI SNAP-Ed 2017	10/1/2014	9/30/2017
10/17/2017	AWD05987	Brown University	Tovar,Alison	AWPI	68808	100	\$68,808.00	Improving nutrition and physical activity supplement for student	6/1/2017	5/31/2018
7/28/2017	AWD06116	Produce for Better Health Foundation	Vadiveloo,Maya	AWPI	5995.53	100	\$5,995.53	PBH Grant Transfer: Manipulating the Sensory Variety of Fruits and Vegetables to Increase Their Intake	10/15/2015	6/30/2018



## DIVISION OF RESEARCH AND ECONOMIC DEVELOPMENT

AWARD DATE	AWARD ID	SPONSOR	INVESTIGATOR	ROLE	AWARD AMT	CREDIT	PORTION AMT	TITLE	BEGIN DATE	END DATE
8/28/2017	AWD05956	Foundation for Food & Agriculture Resear	Vadivelloo,Maya	AWPI	100000	50	\$50,000.00	IIHI - Targeted Incentives, Food Purchases and Health Outcomes	9/1/2017	8/31/2018

### Physical Therapy

**Total: \$716,118.00**

AWARD DATE	AWARD ID	SPONSOR	INVESTIGATOR	ROLE	AWARD AMT	CREDIT	PORTION AMT	TITLE	BEGIN DATE	END DATE
7/10/2017	AWD06060	RI Dept of Behavioral Healthcare,Development	Hulme,Janice	AWPI	179811	100	\$179,811.00	URI/BHDDH Collaborative Agreement for Physical Therapy Services	7/1/2017	6/30/2018
11/1/2017	AWD06274	RI Commerce Corporation	Konin,Jeffrey	AWPI	50000	100	\$50,000.00	The Effects of a Wearable Exercise Device on Musculoskeletal Characteristics	7/4/2017	7/4/2018
10/2/2017	AWD06211	National Institute of Health	Roush,Susan	AWPI	93074	100	\$93,074.00	RIDDC FFY 2017	10/1/2016	9/30/2018
10/2/2017	AWD06211	National Institute of Health	Roush,Susan	AWPI	207633	100	\$207,633.00	RIDDC FFY 2017	10/1/2016	9/30/2018
10/2/2017	AWD06211	National Institute of Health	Roush,Susan	AWPI	185600	100	\$185,600.00	RIDDC FFY 2017	10/1/2016	9/30/2018

### Psychology

**Total: \$407,848.00**

AWARD DATE	AWARD ID	SPONSOR	INVESTIGATOR	ROLE	AWARD AMT	CREDIT	PORTION AMT	TITLE	BEGIN DATE	END DATE
7/2/2017	AWD05909	RI Dept of Behavioral Healthcare,Development	Florin,Paul	AWPI	142114	50	\$71,057.00	IIHI - Evaluation of Statewide Rhode Island Prevention Infrastructure Innovation	7/26/2017	6/30/2018
8/11/2017	AWD03835	RI Dept of Behavioral Healthcare,Development	Florin,Paul R	AWPI	182464	100	\$182,464.00	LOCAL LEVEL EVALUATION OF PARTNERSHIPS FOR SUCCESS	9/30/2013	9/30/2017
8/11/2017	AWD03834	RI Dept of Behavioral Healthcare,Development	Florin,Paul R	AWPI	83270	100	\$83,270.00	STATE LEVEL EVALUATION BUDGET FOR RI PARTNERSHIP FOR SUCCESS	9/30/2015	9/30/2017

## DIVISION OF RESEARCH AND ECONOMIC DEVELOPMENT

AWARD DATE	AWARD ID	SPONSOR	INVESTIGATOR	ROLE	AWARD AMT	CREDIT	PORTION AMT	TITLE	BEGIN DATE	END DATE
		evelop								
7/2/2017	AWD05909	RI Dept of Behavioral Healthcare, D evelop	Skierkowski, Dorothy	WCPI	142114	50	\$71,057.00	IIHI - Evaluation of Statewide Rhode Island Prevention Infrastructure Innovation	7/26/2017	6/30/2018

## DIVISION OF RESEARCH AND ECONOMIC DEVELOPMENT

### Awards for College of Nursing

From: 7/1/2017 To: 12/31/2017

Investigator Award Total: \$71,589.56

#### Dean Nursing

**Total: \$12,469.56**

AWARD DATE	AWARD ID	SPONSOR	INVESTIGATOR	ROLE	AWARD AMT	CREDIT	PORTION AMT	TITLE	BEGIN DATE	END DATE
11/30/2017	AWD05244	R.I. Department of Elderly Affairs	Burbank,Patricia	AWPI	12469.56	100	\$12,469.56	Building Long Term Sustainability in State Lifespan	9/1/2015	8/31/2016

#### Nursing Instruction

**Total: \$59,120.00**

AWARD DATE	AWARD ID	SPONSOR	INVESTIGATOR	ROLE	AWARD AMT	CREDIT	PORTION AMT	TITLE	BEGIN DATE	END DATE
12/29/2017	AWD06312	R.I. Department of Elderly Affairs	Burbank,Patricia	AWPI	30000	100	\$30,000.00	Lifespan Respite Program	9/1/2017	8/31/2018
11/6/2017	AWD05977	American Nurses Foundation	Cotton,Brandi	AWPI	4120	100	\$4,120.00	Dyadic Influences on Methadone Maintenance Treatment	9/1/2017	5/31/2018
12/21/2017	AWD04052	RI Foundation	Dunphy,Lynne M	AWPI	25000	100	\$25,000.00	Developing RI Ph.D. Nurse Leaders to Transform Health Care	8/31/2014	8/31/2018

## DIVISION OF RESEARCH AND ECONOMIC DEVELOPMENT

### Awards for Academic Health Collaborative

From: 7/1/2017 To: 12/31/2017

Investigator Award Total: \$690,138.00

#### IIHI Administration

**Total: \$690,138.00**

AWARD DATE	AWARD ID	SPONSOR	INVESTIGATOR	ROLE	AWARD AMT	CREDIT	PORTION AMT	TITLE	BEGIN DATE	END DATE
9/20/2017	AWD05570	State of Rhode Island	Blissmer,Bryan	AWPI	103124	100	\$103,124.00	State Innovation Model (SIM) Test Grant Evaluation	7/1/2017	6/30/2018
11/7/2017	AWD05411	Integra Community Care Network	Blissmer,Bryan	AWPI	66498	100	\$66,498.00	The INTEGRA Accountable Health Communities Partnership	5/1/2017	4/30/2018
12/12/2017	AWD06213	Exec.Office of Health and Human Services	Blissmer,Bryan	AWPI	267595	100	\$267,595.00	IIHI - Infrastructure - DSHP/SA/EOHHS	11/1/2017	6/30/2018
12/20/2017	AWD06213	Exec.Office of Health and Human Services	Blissmer,Bryan	AWPI	252921	100	\$252,921.00	IIHI - Infrastructure - DSHP/SA/EOHHS	11/1/2017	6/30/2018

## DIVISION OF RESEARCH AND ECONOMIC DEVELOPMENT

### Awards for College of Pharmacy

From: 7/1/2017 To: 12/31/2017

Investigator Award Total: \$3,716,910.26

#### Biomedical & Pharm. Sciences

**Total: \$3,478,973.26**

AWARD DATE	AWARD ID	SPONSOR	INVESTIGATOR	ROLE	AWARD AMT	CREDIT	PORTION AMT	TITLE	BEGIN DATE	END DATE
9/14/2017	AWD04688	National Institute of Health	Chen,Xinyuan	AWPI	\$245,645.00	100	\$245,645.00	Delivery and Adjuvantation of Nicotine Vaccine by Laser Illumination	6/15/2015	5/31/2018
8/22/2017	AWD05630	National Institute of Health	Cho,Bongsup	AWPI	\$209,154.00	100	\$209,154.00	Arylamine DNA Adduct Recognition in Eukaryotic Nucleotide Excision Repair	9/1/2017	8/31/2018
10/4/2017	AWD05308	National Institute of Health	Cho,Bongsup	WCPI	\$1,669,877.00	8.8	\$146,949.17	CI - STEEP - Sources, Transport, Exposure and Effects of Perfluoroalkyl Substances	7/1/2017	3/31/2018
8/25/2017	AWD05933	Brown University	Ghonem,Nisanne	AWPI	\$216,400.00	100	\$216,400.00	An In Vivo Study of Treprostinil, a Prostacyclin Analog, in the Prevention of Ischemia-Reperfusion Injury to the Kidney	7/1/2017	6/30/2018
8/4/2017	AWD04927	Moleculera Labs	Kovoor,Abraham	AWPI	\$11,000.00	100	\$11,000.00	Preparation of D2 Dopamine Receptor-Expressing SF9 Cell Membranes	8/1/2015	7/31/2018
7/28/2017	AWD05820	National Institute of Health	Li,Deyu	AWPI	\$410,961.00	100	\$410,961.00	Inhibitory Effect of Nitric Oxide on DNA Repair Enzymes	8/1/2017	7/31/2020
12/22/2017	AWD06316	National Institute of Health	Li,Deyu	AWPI	\$460,426.00	100	\$460,426.00	Mutational Spectra of Bulky DNA Lesions	1/1/2018	12/31/2018
10/4/2017	AWD06215	National Institute of Health	Quinlan,Katharina	AWPI	\$318,023.00	100	\$318,023.00	RYAN INST - Impairment of Spinal Development in Cerebral Palsy	9/1/2017	6/30/2018
8/18/2017	AWD05893	National Institute of Health	Shaikh,Zahir	AWPI	\$371,916.00	100	\$371,916.00	Rhode Island IDeA Network for Biomedical Research Excellence	5/1/2017	4/30/2018
10/4/2017	AWD05308	National Institute of Health	Slitt,Angela	WCPI	\$1,669,877.00	23.5	\$392,421.09	CI - STEEP - Sources, Transport, Exposure and Effects of Perfluoroalkyl Substances	7/1/2017	3/31/2018
10/31/2017	AWD06223	Yale University	Van Nostrand,William	AWPI	\$696,078.00	100	\$696,078.00	RyanInst. - Characterizing the Glymphatic Peri-Vascular Connectome and its Disruption in AD	11/1/2016	6/30/2021

## DIVISION OF RESEARCH AND ECONOMIC DEVELOPMENT

### Pharmacy Practice

**Total: \$187,937.00**

AWARD DATE	AWARD ID	SPONSOR	INVESTIGATOR	ROLE	AWARD AMT	CREDIT	PORTION AMT	TITLE	BEGIN DATE	END DATE
9/25/2017	AWD04875	Boston University Medical Center	Bratberg, Jeffrey	AWPI	\$12,106.00	100	\$12,106.00	Advancing Patient Safety Implementation through Pharmacy - Based Opioid Medication Use Research	8/1/2015	6/30/2018
8/6/2017	AWD05563	Harvard University	Buchanan, Ashley	AWPI	\$37,029.00	100	\$37,029.00	New Methods for the Design and Evaluation of Large HIV Prevention Interventions	9/1/2016	5/31/2018
12/20/2017	AWD05551	Harvard University	Buchanan, Ashley	AWPI	\$37,752.00	100	\$37,752.00	A Comprehensive Translational Science Analytics Toolkit for the Global Health Agenda Today	9/1/2016	7/31/2018
9/14/2017	AWD05935	Arkansas Children's Research Institute	Caffrey, Aisling	AWPI	\$15,683.00	100	\$15,683.00	IIHI - Patient and Stakeholder Alliance for SATB2-Associated Syndrome	6/1/2017	5/31/2018
8/11/2017	AWD06139	VERASTEM, INC.	Kogut, Stephen	AWPI	\$49,887.00	50	\$24,943.50	Pharmacoeconomics of Chronic Lymphocytic Leukemia: Focus on Novel Oral Targeted Therapies	6/1/2017	5/1/2018
10/19/2017	AWD06239	Ocean State Research Institute, Inc	Laplante, Kerry	AWPI	\$23,113.00	100	\$23,113.00	Acute Bacterial Skin and Skin Structure Infections (ABSSI) among Veterans Treated with Vancomycin: Treatment Epidemiology after Hospital Discharge	8/1/2017	12/31/2017
10/31/2017	AWD04515	Brown University	Temkin, Cynthia	AWPI	\$12,367.00	100	\$12,367.00	The Rhode Island Center for Clinical and Transitional Science	7/1/2016	4/30/2018
8/11/2017	AWD06139	VERASTEM, INC.	Vyas, Ami	WCPI	\$49,887.00	25	\$12,471.75	Pharmacoeconomics of Chronic Lymphocytic Leukemia: Focus on Novel Oral Targeted Therapies	6/1/2017	5/1/2018
8/11/2017	AWD06139	VERASTEM, INC.	Wen, Xuerong	WCPI	\$49,887.00	25	\$12,471.75	Pharmacoeconomics of Chronic Lymphocytic Leukemia: Focus on Novel Oral Targeted Therapies	6/1/2017	5/1/2018

### Ryan Institute Neuroscience

**Total: \$50,000.00**

AWARD DATE	AWARD ID	SPONSOR	INVESTIGATOR	ROLE	AWARD AMT	CREDIT	PORTION AMT	TITLE	BEGIN DATE	END DATE
9/26/2017	AWD06207	RI Commerce Corporation	Brackee, Gordon	AWPI	\$50,000.00	100	\$50,000.00	Ryan Institute - In Vivo Imaging and Behavioral Pharmacology Support for Alzheimer's Drug Development	1/1/2017	12/31/2017

# DIVISION OF RESEARCH AND ECONOMIC DEVELOPMENT

## Awards for University Library

From: 7/1/2017 To: 12/31/2017

Investigator Award Total: \$215,000.00

### DataSpark

**Total: \$215,000.00**

AWARD DATE	AWARD ID	SPONSOR	INVESTIGATOR	ROLE	AWARD AMT	CREDIT	PORTION AMT	TITLE	BEGIN DATE	END DATE
12/8/2017	AWD06298	RI Department of Education	Swindal,Megan	AWPI	200000	100	\$200,000.00	Library, DataSpark, RIDE InfoWorks, 2018	7/1/2017	6/30/2018
12/28/2017	AWD06349	United Way of Rhode Island	Swindal,Megan	AWPI	15000	100	\$15,000.00	Library, DataSpark, United Way HSLI, 2018	7/1/2017	2/28/2018

# DIVISION OF RESEARCH AND ECONOMIC DEVELOPMENT

## Awards for Research & Economic Development

From: 7/1/2017 To: 12/31/2017

Investigator Award Total: \$493,099.00

### Research

**Total: \$484,299.00**

AWARD DATE	AWARD ID	SPONSOR	INVESTIGATOR	ROLE	AWARD AMT	CREDIT	PORTION AMT	TITLE	BEGIN DATE	END DATE
8/10/2017	AWD05557	US Small Business Admin	Huttenhower,Edward	AWPI	484299	100	\$484,299.00	Rhode Island Small Business Development Center - 2017	1/1/2017	12/31/2017

### Transportation Center

**Total: \$8,800.00**

AWARD DATE	AWARD ID	SPONSOR	INVESTIGATOR	ROLE	AWARD AMT	CREDIT	PORTION AMT	TITLE	BEGIN DATE	END DATE
8/11/2017	AWD06117	Electrification Coalition	Lucht,Wendy	AWPI	8800	100	\$8,800.00	Drive Electric Orlando	7/1/2017	12/31/2017