

University of Rhode Island

DigitalCommons@URI

---

Reports (Research and Economic Development)

Division of Research and Economic  
Development

---

2017

## Division of Research and Economic Development Monthly Report for September 2017

URI Division of Research and Economic Development

Follow this and additional works at: [https://digitalcommons.uri.edu/researchecondev\\_reports](https://digitalcommons.uri.edu/researchecondev_reports)

---

### Recommended Citation

URI Division of Research and Economic Development, "Division of Research and Economic Development Monthly Report for September 2017" (2017). *Reports (Research and Economic Development)*. Paper 104. [https://digitalcommons.uri.edu/researchecondev\\_reports/104](https://digitalcommons.uri.edu/researchecondev_reports/104)

This Periodical is brought to you for free and open access by the Division of Research and Economic Development at DigitalCommons@URI. It has been accepted for inclusion in Reports (Research and Economic Development) by an authorized administrator of DigitalCommons@URI. For more information, please contact [digitalcommons-group@uri.edu](mailto:digitalcommons-group@uri.edu).



THE  
UNIVERSITY  
OF RHODE ISLAND

Division of Research and Economic Development

# September FY18 Monthly Awards Report

THINK BIG  WE DO™



Table 1. FY17 Awards through the Division of Research and Economic Development including awards through URIRF as of September FY18

Month	FY14				FY15			
	Number		Amount Awarded		Number		Amount Awarded	
	Count	Cum. Ct.	Amount	Cum. Amt.	Count	Cum. Ct.	Amount	Cum. Amt.
July	39	39	\$4,139,716.95	\$4,139,716.95	56	56	\$9,320,986.14	\$9,320,986.14
August	50	89	\$10,961,168.50	\$15,100,885.45	44	100	\$12,358,916.05	\$21,679,902.19
September	44	133	\$13,495,443.00	\$28,596,328.45	54	154	\$9,752,946.59	\$31,432,848.78
October	30	163	\$4,306,251.98	\$32,902,580.43	40	194	\$10,524,688.48	\$41,957,537.26
November	16	179	\$3,117,236.86	\$36,019,817.29	33	227	\$4,659,283.60	\$46,616,820.86
December	29	208	\$2,366,159.91	\$38,385,977.20	23	250	\$4,928,269.75	\$51,545,090.61
January	30	238	\$3,780,011.56	\$42,165,988.76	22	272	\$2,793,419.35	\$54,338,509.96
February	30	268	\$2,076,599.68	\$44,242,588.44	32	304	\$3,760,154.75	\$58,098,664.71
March	29	297	\$4,062,350.95	\$48,304,939.39	26	330	\$4,144,522.17	\$62,243,186.88
April	28	325	\$4,427,811.05	\$52,732,750.44	33	363	\$10,761,617.18	\$73,004,804.06
May	37	362	\$3,839,315.32	\$56,572,065.76	33	396	\$5,594,823.50	\$78,599,627.56
June	34	396	\$12,209,552.37	\$68,781,618.13	30	426	\$5,826,873.64	\$84,426,501.20
<b>Total</b>	<b>396</b>	<b>396</b>	<b>\$68,781,618.13</b>	<b>\$68,781,618.13</b>	<b>426</b>	<b>426</b>	<b>\$84,426,501.20</b>	<b>\$84,426,501.20</b>

Month	FY16				FY17				FY18			
	Number		Amount Awarded		Number		Amount Awarded		Number		Amount Awarded	
	Count	Cum. Ct.	Amount	Cum. Amt.	Count	Cum. Ct.	Amount	Cum. Amt.	Count	Cum. Ct.	Amount	Cum. Amt.
July	37	37	\$8,259,292.12	\$8,259,292.12	37	37	\$4,339,118.27	\$4,339,118.27	45	45	\$8,131,838.53	\$8,131,838.53
August	50	87	\$11,559,380.86	\$19,818,672.98	57	94	\$8,539,822.58	\$12,878,940.85	51	96	\$7,642,620.00	\$15,774,458.53
September	47	134	\$15,419,750.42	\$35,238,423.40	32	126	\$4,627,289.24	\$17,506,230.09	43	139	\$11,945,424.00	\$27,719,882.53
October	29	163	\$5,505,924.11	\$40,744,347.51	44	170	\$10,495,024.28	\$28,001,254.37				
November	20	183	\$1,782,290.00	\$42,526,637.51	29	199	\$1,964,267.24	\$29,965,521.61				
December	23	206	\$5,157,323.68	\$47,683,961.19	21	220	\$2,559,332.00	\$32,524,853.61				
January	18	224	\$2,301,715.00	\$49,985,676.19	28	248	\$4,267,124.83	\$36,791,978.44				
February	36	260	\$7,503,614.82	\$57,489,291.01	33	281	\$5,870,893.25	\$42,662,871.69				
March	28	288	\$3,653,643.41	\$61,142,934.42	37	318	\$5,531,665.34	\$48,194,537.03				
April	30	318	\$7,850,054.40	\$68,992,988.82	19	337	\$7,231,667.00	\$55,426,204.03				
May	38	356	\$8,421,608.95	\$77,414,597.77	33	370	\$3,555,246.01	\$58,981,450.04				
June	37	393	\$8,166,192.24	\$85,580,790.01	62	432	\$13,550,894.81	\$72,532,344.85				
<b>Total</b>	<b>393</b>	<b>393</b>	<b>\$85,580,790.01</b>	<b>\$85,580,790.01</b>	<b>432</b>	<b>432</b>	<b>\$72,532,344.85</b>	<b>\$72,532,344.85</b>	<b>139</b>	<b>139</b>	<b>\$27,719,882.53</b>	<b>\$27,719,882.53</b>

Fig 1a. FY17 Cumulative totals of numbers of awards through the Division of Research & Economic Development including awards through URIRF as of September FY18

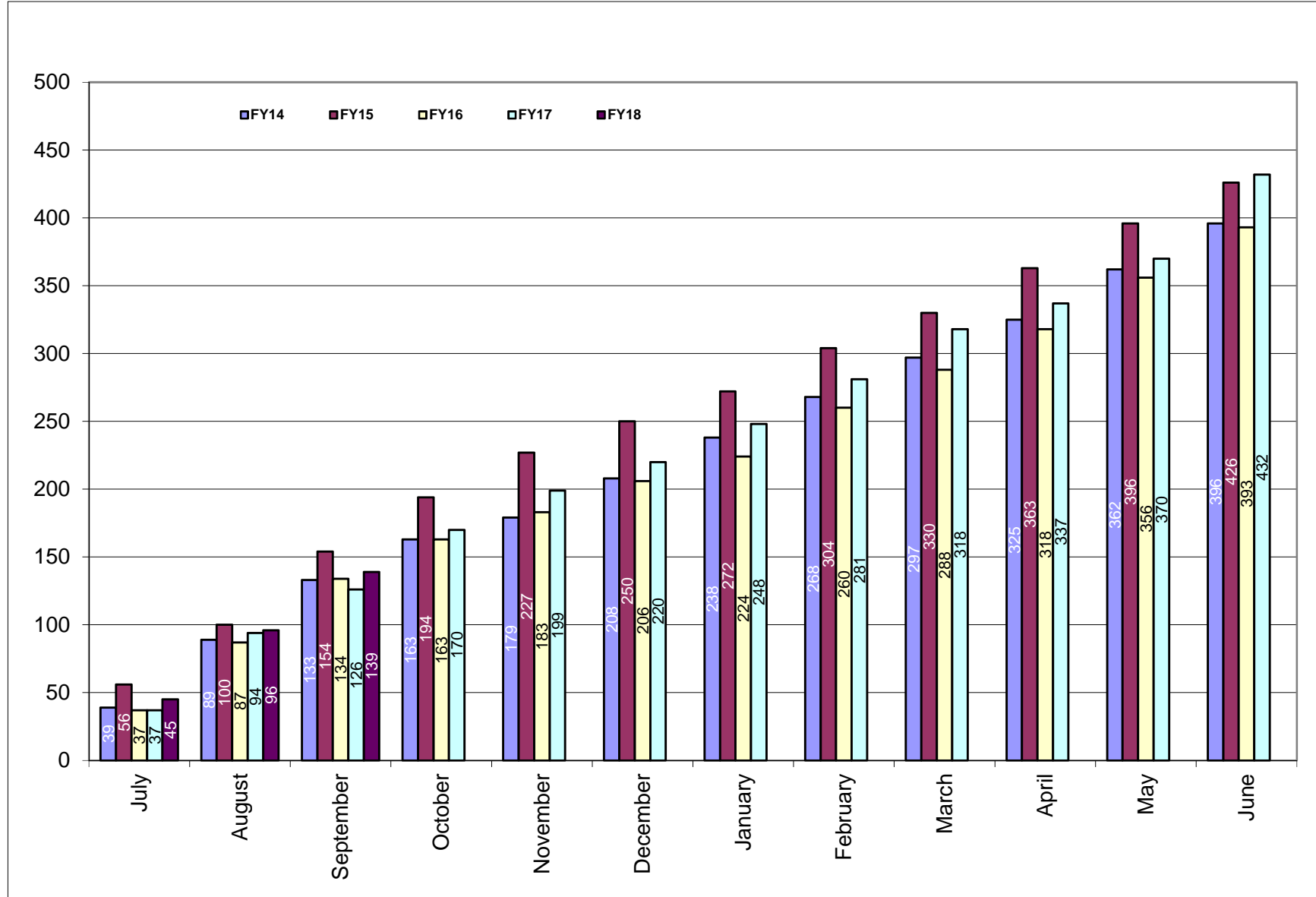
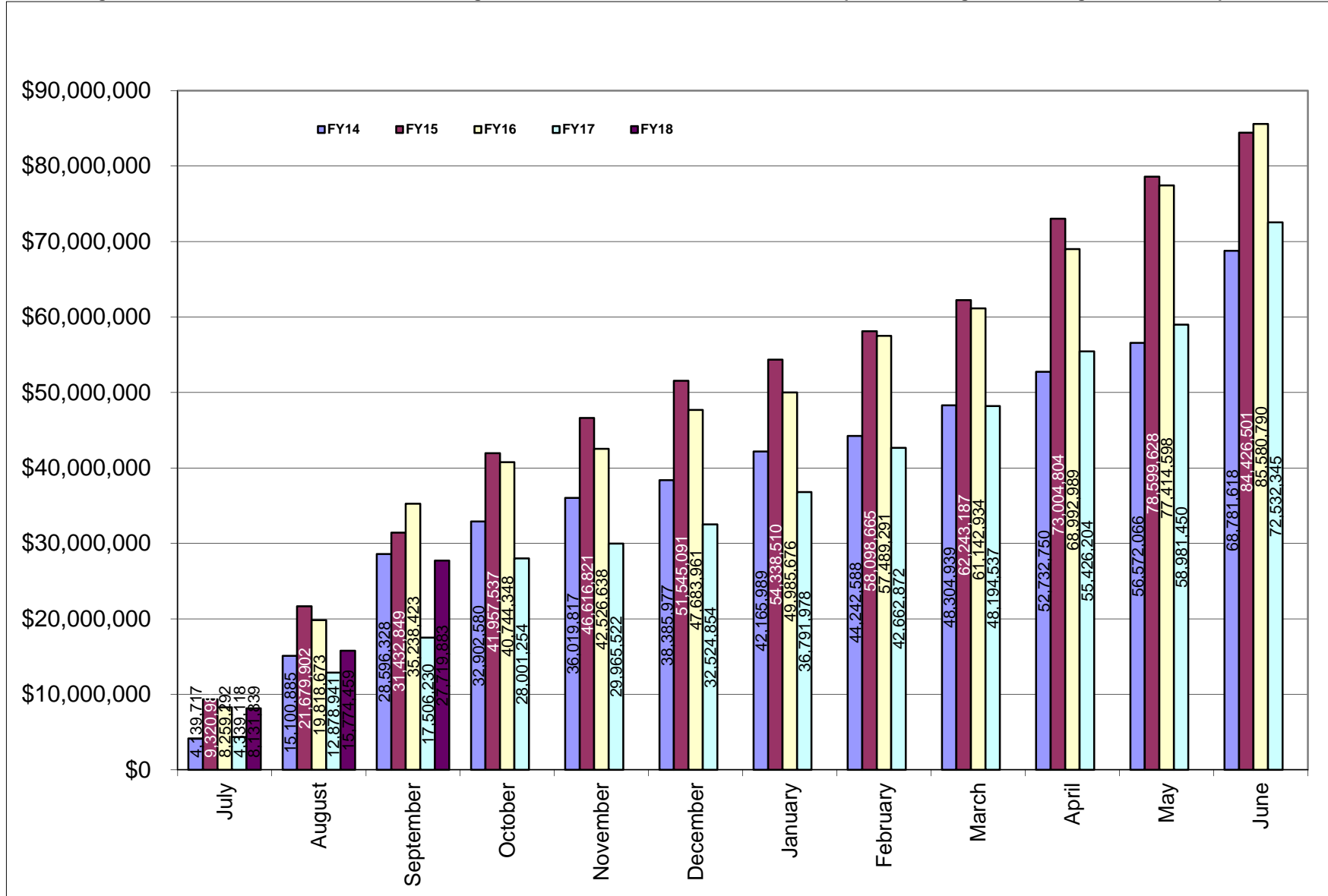


Fig 1b. Cumulative totals of awards received through the Division of Research & Economic Development including awards through URIRF as of September FY18



**Table 2. Summary of awards received by administrative and academic units FY14 through September FY18 YTD**

<b>Administrative</b>	<b><u>FY14</u></b>	<b><u>FY15</u></b>	<b><u>FY16</u></b>	<b><u>FY17</u></b>	<b><u>FY18</u></b>	<b><u>Totals</u></b>
PRESIDENT'S OFFICE	\$0.00	\$0.00	\$0.00	\$0.00	\$0.00	\$0.00
PROVOST	\$66,522.90	\$333,665.52	\$347,327.90	\$0.00	\$0.00	\$747,516.32
VP, ADMINISTRATION	\$934,258.37	\$12,176.00	\$0.00	\$24,923.00	\$0.00	\$971,357.37
VP, RESEARCH & ECON DEV	\$4,177,835.54	\$5,781,973.31	\$5,019,163.69	\$4,130,075.00	\$1,516,529.00	\$20,625,576.54
VP, STUDENT AFFAIRS	\$261,091.70	\$267,287.19	\$124,215.60	\$0.00	\$0.00	\$652,594.49
<b>Academic</b>						
ARTS & SCIENCES	\$4,245,460.88	\$6,966,881.21	\$5,807,093.79	\$4,796,076.54	\$1,592,195.85	\$23,407,708.27
BUSINESS ADMINISTRATION	\$72,332.00	\$255,549.40	\$367,079.80	\$0.00	\$50,000.00	\$744,961.20
COLLEGE OF EDU & PROF STUDIES	\$2,077,426.92	\$1,832,419.00	\$2,191,844.01	\$415,936.50	\$74,384.00	
CONTINUING EDUCATION	\$199,568.70	\$148,136.04	\$118,215.60	NA	\$0.00	\$465,920.34
ENGINEERING	\$3,487,206.08	\$6,367,872.33	\$8,940,566.89	\$4,693,118.34	\$8,495,573.95	\$31,984,337.59
ENVIRONMENT & LIFE SCIENCES	\$16,144,544.99	\$19,928,754.89	\$16,957,974.00	\$12,246,360.67	\$5,942,368.88	\$71,220,003.43
GRADUATE SCHOOL	\$0.00	\$0.00	\$0.00	\$0.00	\$0.00	\$0.00
HUMAN SCIENCE & SERVICES	\$899,862.05	\$858,426.62	\$1,147,091.45	NA	\$0.00	\$2,905,380.12
HEALTH SCIENCES	\$4,771,423.00	\$4,989,606.93	\$4,915,700.32	\$4,961,859.39	\$1,476,576.46	\$21,115,166.10
ACADEMIC HEALTH COLLABORATIVE				\$1,408,568.66	\$103,124.00	\$1,511,692.66
NURSING	\$1,298,944.60	\$682,403.25	\$1,807,216.30	\$1,512,030.27	\$0.00	\$5,300,594.42
OCEANOGRAPHY	\$22,981,661.90	\$25,356,628.31	\$31,099,397.41	\$30,870,365.04	\$6,839,349.39	\$117,147,402.05
PHARMACY	\$6,963,909.80	\$10,644,721.20	\$6,549,687.65	\$6,356,777.70	\$1,629,781.00	\$32,144,877.35
UNIVERSITY COLLEGE	\$199,568.70	\$0.00	\$188,215.60	\$0.00	\$0.00	\$387,784.30
UNIVERSITY LIBRARY				\$1,116,253.68	\$0.00	\$1,116,253.68
<b>Totals</b>	<b>\$68,781,618.13</b>	<b>\$84,426,501.20</b>	<b>\$85,580,790.01</b>	<b>\$72,532,344.79</b>	<b>\$27,719,882.53</b>	<b>\$332,449,126.23</b>

NA - NOT APPLICABLE (Unit does not exist)

CANCER PREV RESEARCH CTR - Prior to FY17 was reported in Arts and Sciences

CENTER FOR HUMAN SERVICES - Prior to FY17 was reported in Human Science and Services

EDUCATION - Prior to FY17 was reported in Human Science and Services

HUMAN DEV/COUNSEL/FAM STUDIES - Prior to FY17 was reported in Human Science and Services

NUTRITION AND FOOD SCIENCES - Prior to FY17 was reported in Environment and Life Sciences

PHYSICAL THERAPY - Prior to FY17 was reported in Human Science and Services

PSYCHOLOGY - Prior to FY17 was reported in Arts and Sciences

**Table 2a. Awards received by departments within colleges FY14 through September FY18 YTD**

<u>College</u>	<u>FY14</u>	<u>FY15</u>	<u>FY16</u>	<u>FY17</u>	<u>FY18 YTD</u>	<u>Totals</u>
<b>Arts and Sciences</b>	<b>\$4,245,460.88</b>	<b>\$6,966,881.21</b>	<b>\$5,807,093.79</b>	<b>\$4,796,076.54</b>	<b>\$1,592,195.85</b>	<b>\$23,407,708.27</b>
ARCHEOLOGY AND APPLIED HISTORY	\$0.00	\$4,898.00	\$0.00	\$0.00	\$0.00	\$4,898.00
ART	\$0.00	\$0.00	\$0.00	\$0.00	\$0.00	\$0.00
CHEMISTRY	\$1,860,329.55	\$4,959,626.45	\$3,407,452.84	\$2,369,873.50	\$1,120,685.00	\$13,717,967.34
COMMUNICATION STUDIES	\$0.00	\$0.00	\$0.00	\$69,146.00	\$0.00	\$69,146.00
COMPUTER SCIENCE/STATISTICS	\$159,245.55	\$50,250.00	\$826,544.98	\$491,657.00	\$69,120.00	\$1,596,817.53
DEAN'S OFFICE	\$22,302.98	\$23,478.36	\$24,924.04	\$0.00	\$0.00	\$70,705.38
ECONOMICS	\$0.00	\$6,250.00	\$0.00	\$0.00	\$0.00	\$6,250.00
ENGLISH		\$475,980.00	\$0.00	\$25,000.00	\$0.00	\$500,980.00
FEINSTEIN HUNGER CTR(DEAN'S OFFICE)	\$797,488.00	\$555,216.00	\$570,233.00	\$555,216.00	\$0.00	\$2,478,153.00
HISTORY	\$248,515.00	\$60,480.00	\$1,982.00	\$211,921.00	\$0.00	\$522,898.00
INTERNATIONAL ENGINEERING PROG	\$0.00	\$0.00	\$0.00	\$0.00	\$0.00	\$0.00
LANGUAGES	\$419,870.00	\$377,995.80	\$15,000.00	\$761,273.04	\$387,475.00	\$1,961,613.84
LIBRARY AND INFORMATION STUDIES	\$50,000.00	\$0.00	\$0.00	\$0.00	\$0.00	\$50,000.00
MATHEMATICS	\$108,832.55	\$0.00	\$0.00	\$0.00	\$0.00	\$108,832.55
PHILOSOPHY				\$2,000.00	\$0.00	\$2,000.00
PHYSICS	\$504,034.50	\$219,162.00	\$237,748.00	\$217,875.00	\$0.00	\$1,178,819.50
POLITICAL SCIENCE		\$162,083.60	\$517,787.30	\$31,502.00	\$14,915.85	\$726,288.75
SOCIOLOGY/ANTHROPOLOGY	\$30,118.75	\$0.00	\$110,426.00	\$50,613.00	\$0.00	\$191,157.75
THEATRE	\$0.00	\$0.00	\$0.00	\$0.00	\$0.00	\$0.00
GENDER AND WOMEN'S STUDIES	\$0.00	\$0.00	\$0.00	\$0.00	\$0.00	\$0.00
WRITING AND RHETORIC	\$44,724.00	\$71,461.00	\$94,995.63	\$10,000.00	\$0.00	\$221,180.63
<b>Business Administration</b>	<b>\$72,332.00</b>	<b>\$255,549.40</b>	<b>\$367,079.80</b>	<b>\$0.00</b>	<b>\$50,000.00</b>	<b>\$744,961.20</b>
ACCOUNTING	\$0.00	\$0.00	\$0.00	\$0.00	\$0.00	\$0.00
DEAN'S OFFICE	\$0.00	\$234,712.00	\$331,719.40	\$0.00	\$50,000.00	\$616,431.40
FACULTY - INSTRUCTION	\$72,332.00	\$20,837.40	\$35,360.40	\$0.00	\$0.00	\$128,529.80
MANAGEMENT	\$0.00	\$0.00	\$0.00	\$0.00	\$0.00	\$0.00

<u>College</u>	<u>FY14</u>	<u>FY15</u>	<u>FY16</u>	<u>FY17</u>	<u>FY18 YTD</u>	<u>Totals</u>
<b>College of Education &amp; Prof. Studies</b>	<b>\$2,077,426.92</b>	<b>\$1,832,419.00</b>	<b>\$2,191,844.01</b>	<b>\$415,936.50</b>	<b>\$74,384.00</b>	<b>\$6,592,010.43</b>
BIOTECH MANUFACTURING PVD COHORT					\$74,384.00	\$74,384.00
CENTER FOR HUMAN SERVICES	\$524,558.00	\$237,256.00	\$237,256.00	\$237,256.00	\$0.00	\$1,236,326.00
EDUCATION	\$1,552,868.92	\$1,595,163.00	\$1,954,588.01	\$178,680.50	\$0.00	\$5,281,300.43
<b>Engineering</b>	<b>\$3,487,206.08</b>	<b>\$6,367,872.33</b>	<b>\$8,940,566.89</b>	<b>\$4,693,118.34</b>	<b>\$8,495,573.95</b>	<b>\$31,984,337.59</b>
CHEMICAL ENGINEERING	\$1,017,782.78	\$1,147,777.99	\$638,045.12	\$532,058.37	\$3,479,817.25	\$6,815,481.51
CIVIL/ENVIRONMENTAL ENGINEERING	\$679,694.60	\$358,795.80	\$626,548.76	\$612,973.05	\$203,697.60	\$2,481,709.81
DEAN'S OFFICE	\$107,273.00	\$65,999.00	\$319,912.80	\$64,876.00	\$221,188.00	\$779,248.80
ELECTRICAL ENGINEERING	\$221,001.00	\$2,903,823.72	\$3,390,875.31	\$737,022.59	\$3,888,661.70	\$11,141,384.32
ENGINEERING COMPUTER CTR	\$42,572.00	\$0.00	\$0.00	\$0.00	\$0.00	\$42,572.00
INTERNATIOANAL ENG PROGRAM		\$17,692.80	\$15,000.00	\$25,000.00	\$0.00	\$57,692.80
MECHANICAL & INDUSTRIAL SYS EGR	\$350,143.00	\$586,746.91	\$1,993,862.41	\$1,103,170.00	\$398,231.38	\$4,432,153.70
OCEAN ENGINEERING	\$1,068,739.70	\$1,287,036.11	\$1,956,322.49	\$1,618,018.33	\$303,978.02	\$6,234,094.65
<b>Environment and Life Sciences</b>	<b>\$16,144,544.99</b>	<b>\$19,928,754.89</b>	<b>\$16,957,974.00</b>	<b>\$12,246,360.67</b>	<b>\$5,942,368.88</b>	<b>\$71,220,003.43</b>
BIOLOGICAL SCIENCES	\$1,205,548.39	\$409,221.00	\$253,638.00	\$330,500.00	\$0.00	\$2,198,907.39
CELL AND MOLECULAR BIOLOGY	\$7,148,772.86	\$430,581.00	\$0.00	\$60,697.00	\$60,697.00	\$7,700,747.86
CELLS ACADEMIC UNIT 1		\$2,817,060.20	\$4,150,538.11	\$2,509,767.82	\$458,101.40	\$9,935,467.53
CELLS ACADEMIC UNIT 2		\$3,661,919.60	\$4,189,228.41	\$2,933,492.89	\$2,271,949.68	\$13,056,590.58
CELLS ACADEMIC UNIT 3	\$8,000.00	\$5,610,346.18	\$5,712,508.68	\$4,422,068.04	\$3,151,620.80	\$18,904,543.70
CELLS DEAN / ADMINISTRATION				\$28,112.00	\$0.00	\$28,112.00
COMMUNITY PLANNING/AREA DEVEL	\$0.00	\$0.00	\$0.00	\$0.00	\$0.00	\$0.00
COOPERATIVE EXTENSION	\$303,615.00	\$117,786.70	\$8,250.00	\$0.00	\$0.00	\$429,651.70
DEAN'S OFFICE	\$1,671,668.43	\$802,988.20	\$1,639,130.50	\$1,785,936.00	\$0.00	\$5,899,723.13
ENV & NAT RESOURCE ECONOMICS	\$780,131.00	\$570,754.00	\$335,567.20	\$0.00	\$0.00	\$1,686,452.20
FISHERIES, ANIMAL & VET SCIENCE	\$958,878.97	\$569,213.69	\$176,211.10	\$83,288.92	\$0.00	\$1,787,592.68
GEOSCIENCES	\$566,452.87	\$1,116,544.24	\$113,544.00	\$88,898.00	\$0.00	\$1,885,439.11
MARINE AFFAIRS	\$3,837.00	\$0.00	\$0.00	\$0.00	\$0.00	\$3,837.00
NATURAL RESOURCES SCIENCE	\$3,014,274.22	\$3,753,730.08	\$354,263.00	\$3,600.00	\$0.00	\$7,125,867.30



PLANT SCIENCE	\$483,366.25	\$68,610.00	\$25,095.00	\$0.00	\$0.00	\$577,071.25
<b>College</b>	<b>FY14</b>	<b>FY15</b>	<b>FY16</b>	<b>FY17</b>	<b>FY18 YTD</b>	<b>Totals</b>
<b>Graduate School</b>	<b>\$0.00</b>	<b>\$0.00</b>	<b>\$0.00</b>	<b>\$0.00</b>	<b>\$0.00</b>	<b>\$0.00</b>
<b>Human Science and Services</b>	<b>\$632,784.95</b>	<b>\$320,639.22</b>	<b>\$41,750.00</b>	<b>NA*</b>	<b>NA*</b>	<b>\$995,174.17</b>
COMMUNICATIVE DISORDERS	\$0.00	\$0.00	\$24,250.00			\$24,250.00
DEAN'S OFFICE	\$588,623.00	\$319,709.00	\$0.00			\$908,332.00
KINGSTON CHILD DEVELOPMENT CTR	\$7,162.95	\$930.22	\$0.00			\$8,093.17
TEXTILES/FASHION MERCHAND/DESIGN	\$36,999.00	\$0.00	\$17,500.00			\$54,499.00
<b>College of Health Sciences</b>	<b>\$5,038,500.10</b>	<b>\$5,527,394.33</b>	<b>\$6,021,041.77</b>	<b>\$4,961,859.39</b>	<b>\$1,476,576.46</b>	<b>\$23,025,372.05</b>
CANCER PREV RESEARCH CTR	\$1,236,062.50	\$2,284,271.90	\$3,030,564.52	\$1,668,136.64	\$423,451.93	\$8,642,487.49
GERONTOLOGY	\$267,077.10	\$537,787.40	\$1,100,341.45	\$550,451.85	\$0.00	\$2,455,657.80
HUMAN DEV/COUNSEL/FAM STUDIES	\$116,886.00	\$109,355.00	\$226,093.95	\$117,292.45	\$50,000.00	\$619,627.40
KINESIOLOGY	\$0.00	\$0.00	\$5,000.00	\$3,000.00	\$0.00	\$8,000.00
NUTRITION AND FOOD SCIENCES	\$2,847,405.50	\$2,132,969.00	\$334,417.00	\$1,663,532.00	\$415,465.53	\$7,393,789.03
PHYSICAL THERAPY	\$341,442.00	\$87,892.00	\$840,254.65	\$540,230.45	\$179,811.00	\$1,989,630.10
PSYCHOLOGY	\$229,627.00	\$375,119.03	\$484,370.20	\$419,216.00	\$407,848.00	\$1,916,180.23
<b>ACADEMIC HEALTH COLLABORATIVE</b>				<b>\$1,408,568.66</b>	<b>\$103,124.00</b>	<b>\$1,511,692.66</b>
IIHI ADMINISTRATION				\$1,408,568.66	\$103,124.00	\$1,511,692.66
<b>Nursing</b>	<b>\$1,298,944.60</b>	<b>\$682,403.25</b>	<b>\$1,807,216.30</b>	<b>\$1,512,030.27</b>	<b>\$0.00</b>	<b>\$5,300,594.42</b>
<b>Oceanography</b>	<b>\$22,981,661.90</b>	<b>\$25,356,628.31</b>	<b>\$31,099,397.41</b>	<b>\$30,870,365.04</b>	<b>\$6,839,349.39</b>	<b>\$117,147,402.05</b>

<b>Pharmacy</b>	<b>\$6,963,909.80</b>	<b>\$10,644,721.20</b>	<b>\$6,549,687.65</b>	<b>\$6,356,777.70</b>	<b>\$1,629,781.00</b>	<b>\$32,094,877.35</b>
BIOMEDICAL & PHARMACEUTICAL SCI	\$5,544,086.00	\$6,272,151.75	\$5,773,671.13	\$5,728,968.10	\$1,465,076.00	\$24,783,952.98
CRIME LAB	\$33,092.00	\$30,770.75	\$14,333.75	\$31,094.25	\$0.00	\$109,290.75
DEAN'S OFFICE	\$0.00	\$0.00	\$0.00	\$0.00	\$0.00	\$0.00
ELDERLY MEDICATION	\$0.00	\$0.00	\$0.00	\$0.00	\$0.00	\$0.00
LIVING RITE/HEALTH POLICY	\$811,359.00	\$2,988,425.40	\$0.00	\$0.00	\$0.00	\$3,799,784.40
PHARMACY PRACTICE	\$575,372.80	\$1,353,373.30	\$761,682.77	\$596,715.35	\$114,705.00	\$3,401,849.22
RYAN INSTITUTE NEUROSCIENCE					\$50,000.00	

<u>College</u>	<u>FY14</u>	<u>FY15</u>	<u>FY16</u>	<u>FY17</u>	<u>FY18 YTD</u>	<u>Totals</u>
<b>University College</b>	<b>\$199,568.70</b>	<b>\$0.00</b>	<b>\$188,215.60</b>	<b>\$0.00</b>	<b>\$0.00</b>	<b>\$387,784.30</b>

<u>College</u>	<u>FY14</u>	<u>FY15</u>	<u>FY16</u>	<u>FY17</u>	<u>FY18 YTD</u>	<u>Totals</u>
<b>University Library</b>	<b>\$0.00</b>	<b>\$0.00</b>	<b>\$0.00</b>	<b>\$1,116,253.68</b>	<b>\$0.00</b>	<b>\$1,116,253.68</b>
DATASPARK				\$1,116,253.68	\$0.00	\$1,116,253.68

NA - NOT APPLICABLE (Unit does not exist)

CANCER PREV RESEARCH CTR - Prior to FY17 was reported in Arts and Sciences

CENTER FOR HUMAN SERVICES - Prior to FY17 was reported in Human Science and Services

EDUCATION - Prior to FY17 was reported in Human Science and Services

GERONTOLOGY - Prior to FY17 was reported in Human Science and Services

HUMAN DEV/COUNSEL/FAM STUDIES - Prior to FY17 was reported in Human Science and Services

NUTRITION AND FOOD SCIENCES - Prior to FY17 was reported in Environment and Life Sciences

PHYSICAL THERAPY - Prior to FY17 was reported in Human Science and Services

PSYCHOLOGY - Prior to FY17 was reported in Arts and Sciences

**Table 2b. Awards received by units within administrative divisions FY14 through September FY18 YTD**

<u>Administrative Unit</u>	<u>FY14</u>	<u>FY15</u>	<u>FY16</u>	<u>FY17</u>	<u>FY18 YTD</u>	<u>Totals</u>
<b>President's Office</b>	<b>\$0.00</b>	<b>\$0.00</b>	<b>\$0.00</b>	<b>\$0.00</b>	<b>\$0.00</b>	<b>\$0.00</b>
<b>Provost</b>	<b>\$66,522.90</b>	<b>\$333,665.52</b>	<b>\$347,327.90</b>	<b>\$0.00</b>	<b>\$0.00</b>	<b>\$747,516.32</b>
ADVANCE OFFICE	\$0.00	\$0.00	\$0.00	\$0.00	\$0.00	\$0.00
LABOR RESEARCH CENTER	\$0.00	\$143,874.60	\$243,922.70	\$0.00	\$0.00	\$387,797.30
NETWORK AND TELECOM SERVICES	\$0.00	\$0.00	\$0.00	\$0.00	\$0.00	\$0.00
PROVOST	\$66,522.90	\$189,790.92	\$103,405.20	\$0.00	\$0.00	\$359,719.02
<b>VP, Administration</b>	<b>\$934,258.37</b>	<b>\$12,176.00</b>	<b>\$0.00</b>	<b>\$24,923.00</b>	<b>\$0.00</b>	<b>\$12,176.00</b>
POLICE				\$24,923.00	\$0.00	\$24,923.00
TRANSPORTATION CENTER	\$934,258.37	NA	NA	NA	NA	\$934,258.37
VICE PRESIDENT FOR ADMINISTRATION	\$0.00	\$12,176.00	\$0.00	\$0.00	\$0.00	\$12,176.00
<b>VP, Research &amp; Economic Development</b>	<b>\$4,177,835.54</b>	<b>\$5,781,973.31</b>	<b>\$5,019,163.69</b>	<b>\$4,130,075.00</b>	<b>\$1,516,529.00</b>	<b>\$13,980,980.54</b>
SMALL BUSINESS DEVELOPMENT CTR	\$172,400.00	\$1,090,101.00	\$650,000.00	\$0.00	\$0.00	\$1,912,501.00
VICE PRESIDENT FOR RESEARCH	\$4,005,435.54	\$4,011,596.00	\$0.00	\$1,650,626.00	\$484,299.00	\$10,151,956.54
TRANSPORTATION CENTER		\$680,276.31	\$1,044,239.69	\$192,007.00	\$0.00	\$1,916,523.00
URI RESEARCH FOUNDATION			\$3,324,924.00	\$2,287,442.00	\$1,032,230.00	\$6,644,596.00
<b>VP, Student Affairs</b>	<b>\$261,091.70</b>	<b>\$267,287.19</b>	<b>\$124,215.60</b>	<b>\$0.00</b>	<b>\$0.00</b>	<b>\$652,594.49</b>
STUDENT LIFE	\$61,523.00	\$0.00	\$0.00	\$0.00	\$0.00	\$61,523.00
TALENT DEVELOPMENT	\$199,568.70	\$142,343.19	\$118,215.60	\$0.00	\$0.00	\$460,127.49
VICE PRESIDENT STUDENT AFFAIRS		\$124,944.00	\$0.00	\$0.00	\$0.00	\$124,944.00
WOMENS CENTER			\$6,000.00	\$0.00	\$0.00	\$6,000.00

NA - Not Applicable (unit did not exist or was in another division)

## DIVISION OF RESEARCH AND ECONOMIC DEVELOPMENT

### Awards for College of Arts & Sciences

From: 7/1/2017 To: 9/30/2017

Investigator Award Total: \$1,592,195.85

#### Chemistry

**Total: \$1,120,685.00**

AWARD DATE	AWARD ID	SPONSOR	INVESTIGATOR	ROLE	AWARD AMT	CREDIT	PORTION AMT	TITLE	BEGIN DATE	END DATE
7/19/2017	AWD04251	BASF Chemical Company	Lucht,Brett L	AWPI	297849	100	\$297,849.00	Development of Electrolytes for Lithium Ion Batteries	1/1/2017	12/31/2018
8/21/2017	AWD04284	DEFENSE THREAT REDUCTION AGENCY	Oxley,Jimmie C	AWPI	180000	50	\$90,000.00	Unique Polymer Packaging and Delivery of ADW	5/19/2014	10/1/2018
8/21/2017	AWD03809	Northeastern University	Oxley,Jimmie C	AWPI	172836	100	\$172,836.00	AWARENESS AND LOCALIZATION OF EXPLOSIVES-RELATED THREATS (ALERT)	8/25/2013	6/30/2018
8/21/2017	AWD03809	Northeastern University	Oxley,Jimmie C	AWPI	470000	100	\$470,000.00	AWARENESS AND LOCALIZATION OF EXPLOSIVES-RELATED THREATS (ALERT)	8/25/2013	6/30/2018
8/21/2017	AWD04284	DEFENSE THREAT REDUCTION AGENCY	Smith,James L	WCPI	180000	50	\$90,000.00	Unique Polymer Packaging and Delivery of ADW	5/19/2014	10/1/2018

#### Computer Science

**Total: \$69,120.00**

AWARD DATE	AWARD ID	SPONSOR	INVESTIGATOR	ROLE	AWARD AMT	CREDIT	PORTION AMT	TITLE	BEGIN DATE	END DATE
7/28/2017	AWD06051	RI Commerce_C orporation	Daniels,Noah	AWPI	50000	100	\$50,000.00	Prediction of Network Equipment Failure	7/17/2017	12/31/2017
9/26/2017	AWD06083	Brown University	Puggioni,Gavino	AWPI	19120	100	\$19,120.00	RI Center for Clinical and Translational Research	5/1/2017	4/30/2018

## DIVISION OF RESEARCH AND ECONOMIC DEVELOPMENT

### Languages

**Total: \$387,475.00**

AWARD DATE	AWARD ID	SPONSOR	INVESTIGATOR	ROLE	AWARD AMT	CREDIT	PORTION AMT	TITLE	BEGIN DATE	END DATE
8/21/2017	AWD05196	Institute for International Education	He, Wayne Wenchao	AWPI	325860	100	\$325,860.00	Chinese Flagship 2016-2020	6/1/2017	5/31/2018
7/28/2017	AWD05461	US Department of Education	Magidow, Alexander	AWPI	61615	100	\$61,615.00	Building Towards an International Business Program in Arabic at URI	10/1/2017	9/30/2018

### Political Science

**Total: \$14,915.85**

AWARD DATE	AWARD ID	SPONSOR	INVESTIGATOR	ROLE	AWARD AMT	CREDIT	PORTION AMT	TITLE	BEGIN DATE	END DATE
8/16/2017	AWD05816	National Science Foundation	Krueger, Brian	WCPI	99439	15	\$14,915.85	SCC-Planning: Smart and Connected Residential Water Quality Community	8/15/2017	7/31/2018

## DIVISION OF RESEARCH AND ECONOMIC DEVELOPMENT

### Awards for College of Business Administration

From: 7/1/2017 To: 9/30/2017

Investigator Award Total: \$50,000.00

#### Dean-Coll-Bus-Adm

**Total: \$50,000.00**

AWARD DATE	AWARD ID	SPONSOR	INVESTIGATOR	ROLE	AWARD AMT	CREDIT	PORTION AMT	TITLE	BEGIN DATE	END DATE
8/28/2017	AWD05956	Foundation for Food & Agriculture Resear	Atlas,Stephen	WCPI	100000	50	\$50,000.00	IIHI - Targeted Incentives, Food Purchases and Health Outcomes	9/1/2017	8/31/2018

# DIVISION OF RESEARCH AND ECONOMIC DEVELOPMENT

## Awards for College of Education and Professional Studies

From 7/1/2017 To: 9/30/2017

Investigator Award Total: \$74,384.00

### Biotech Mfg Providence Cohort

**Total: \$74,384.00**

AWARD DATE	AWARD ID	SPONSOR	INVESTIGATOR	ROLE	AWARD AMT	CREDIT	PORTION AMT	TITLE	BEGIN DATE	END DATE
8/7/2017	AWD05810	Education Development Center, Inc.	Bozzi,Edward	AWPI	74384	100	\$74,384.00	RI Amgen Biotechnology Experience	7/1/2017	6/30/2018

## DIVISION OF RESEARCH AND ECONOMIC DEVELOPMENT

### Awards for College of Engineering

From: 7/1/2017 To: 9/30/2017

Investigator Award Total: \$8,495,573.95

#### Chemical Engineering

**Total: \$3,479,817.25**

AWARD DATE	AWARD ID	SPONSOR	INVESTIGATOR	ROLE	AWARD AMT	CREDIT	PORTION AMT	TITLE	BEGIN DATE	END DATE
8/11/2017	AWD04741	University of Maryland	Bothun,Geoffrey	AWPI	28178	100	\$28,178.00	Molecular Engineering of Food-Grade Dispersants as Highly Efficient and Safe Products for the Treatment of Oil Spills	1/1/2016	12/31/2017
9/21/2017	AWD05500	National Science Foundation	Bothun,Geoffrey	AWPI	4535519	75	\$3,401,639.25	RII Track-1: Enhancing Rhode Island's Coastal Environment to Enable Growth in a Blue Economy	8/1/2017	7/31/2022
9/22/2017	AWD05994	RI Commerce Corporation	Bothun,Geoffrey	AWPI	50000	100	\$50,000.00	Evaluation of a New Cleaning Process for Medical Devices	5/21/2017	12/31/2017

#### Civil and Environmental Engine

**Total: \$203,697.60**

AWARD DATE	AWARD ID	SPONSOR	INVESTIGATOR	ROLE	AWARD AMT	CREDIT	PORTION AMT	TITLE	BEGIN DATE	END DATE
7/14/2017	AWD05857	National Science Foundation	Craver,Vinka	AWPI	40025	100	\$40,025.00	Collaborative Research: Pan American Nanotechnology Conference: Shaping the Future	8/1/2017	7/31/2018
8/8/2017	AWD05857	National Science Foundation	Craver,Vinka	AWPI	7000	100	\$7,000.00	Collaborative Research: Pan American Nanotechnology Conference: Shaping the Future	8/1/2017	7/31/2018
8/16/2017	AWD05816	National Science Foundation	Craver,Vinka	AWPI	99439	40	\$39,775.60	SCC-Planning: Smart and Connected Residential Water Quality Community	8/15/2017	7/31/2018
7/5/2017	AWD03893	National Science Foundation	Craver,Vinka A	PI	6631	100	\$6,631.00	CAREER: BACTERIAL ADAPTATION MECHANISM TO CHRONIC EXPOSURE TO NANOPARTICLES AND ITS IMPLICATIONS TO NANOMANUFACTURING AND PUBLIC HEALTH	5/1/2014	4/30/2019
7/14/2017	AWD03893	National Science Foundation	Craver,Vinka A	PI	49966	100	\$49,966.00	CAREER: BACTERIAL ADAPTATION MECHANISM TO CHRONIC EXPOSURE TO NANOPARTICLES AND ITS IMPLICATIONS TO NANOMANUFACTURING	5/1/2014	4/30/2019



## DIVISION OF RESEARCH AND ECONOMIC DEVELOPMENT

AWARD DATE	AWARD ID	SPONSOR	INVESTIGATOR	ROLE	AWARD AMT	CREDIT	PORTION AMT	TITLE	BEGIN DATE	END DATE
								AND PUBLIC HEALTH		
8/17/2017	AWD06138	Rhode Island Marine Trade Association	Das,Sumanta	AWPI	45000	34	\$15,300.00	Phase 1: Composite Materials for Bridges in Rhode Island	8/29/2017	12/31/2017
8/30/2017	AWD06175	Rhode Island Marine Trade Association	Das,Sumanta	AWPI	45000	34	\$15,300.00	Phase 1: Composite Materials for Bridges in Rhode Island	8/29/2017	12/31/2017
8/17/2017	AWD06138	Rhode Island Marine Trade Association	Tsiatas,George	WCPI	45000	33	\$14,850.00	Phase 1: Composite Materials for Bridges in Rhode Island	8/29/2017	12/31/2017
8/30/2017	AWD06175	Rhode Island Marine Trade Association	Tsiatas,George	WCPI	45000	33	\$14,850.00	Phase 1: Composite Materials for Bridges in Rhode Island	8/29/2017	12/31/2017

**Dean Engineering**  
**Total: \$221,188.00**

AWARD DATE	AWARD ID	SPONSOR	INVESTIGATOR	ROLE	AWARD AMT	CREDIT	PORTION AMT	TITLE	BEGIN DATE	END DATE
8/7/2017	AWD05770	National Science Foundation	He,Haibo	AWPI	221188	100	\$221,188.00	Collaborative Research: Enabling Dynamic Spectrum Access for Future Broadband Wireless Networks Using Neuromorphic Computing	8/15/2017	7/31/2020

**Elec, Computer & Bio Engr**  
**Total: \$3,888,661.70**

AWARD DATE	AWARD ID	SPONSOR	INVESTIGATOR	ROLE	AWARD AMT	CREDIT	PORTION AMT	TITLE	BEGIN DATE	END DATE
7/21/2017	AWD05595	National Science Foundation	Besio,Walter	AWPI	199999	100	\$199,999.00	FromLab to Market - Transcranial Focal Electrical Stimulation (TFS) for Epilepsy	7/15/2017	12/31/2018
9/20/2017	AWD04693	National Science Foundation	Besio,Walter	AWPI	2999965	65	\$1,949,977.25	RII Track -2 FEC: Innovative, Broadly Accessible Tools for Brain Imaging, Decoding, and Modulation	8/1/2015	7/31/2019
9/20/2017	AWD04693	National Science Foundation	Kennedy,Stephen	WCPI	2999965	15	\$449,994.75	RII Track -2 FEC: Innovative, Broadly Accessible Tools for Brain Imaging, Decoding, and Modulation	8/1/2015	7/31/2019

## DIVISION OF RESEARCH AND ECONOMIC DEVELOPMENT

AWARD DATE	AWARD ID	SPONSOR	INVESTIGATOR	ROLE	AWARD AMT	CREDIT	PORTION AMT	TITLE	BEGIN DATE	END DATE
7/18/2017	AWD05689	National Science Foundation	Li,Bin	AWPI	301430	100	\$301,430.00	Emulating Round-Robin in Wireless Networks	10/1/2017	9/30/2020
7/7/2017	AWD05100	Rhode Island Hospital	Mankodiya,Kunal	AWPI	14731	100	\$14,731.00	Understanding the Interplay of Social Context and Physiology on Psychological Outcomes in Trauma-Exposed Adolescents	4/1/2017	3/31/2018
7/11/2017	AWD05662	Pet Tech	Mankodiya,Kunal	AWPI	50000	100	\$50,000.00	PetRover - A Robotized Entertaining Pet Toy Integrated with Internet-of-things Technology	5/1/2017	4/30/2018
8/7/2017	AWD05912	RI Commerce Corporation	Mankodiya,Kunal	AWPI	50000	100	\$50,000.00	Smart Billboards: An Internet of Infrastructure for Smart Cities	6/1/2017	4/30/2018
8/16/2017	AWD05816	National Science Foundation	Mankodiya,Kunal	WCPI	99439	30	\$29,831.70	SCC-Planning: Smart and Connected Residential Water Quality Community	8/15/2017	7/31/2018
9/20/2017	AWD04693	National Science Foundation	Mankodiya,Kunal	WCPI	2999965	20	\$599,993.00	RII Track -2 FEC: Innovative, Broadly Accessible Tools for Brain Imaging, Decoding, and Modulation	8/1/2015	7/31/2019
7/31/2017	AWD05665	US of Office of Naval Research	Wei,Tao	AWPI	170000	100	\$170,000.00	ONR YIP: Sub-Terahertz-Range-Interrogated Fiber-Optic Devices for High-Speed Distributed Sensing Applications	6/1/2017	5/30/2020
9/12/2017	AWD05693	URI Research Foundation	Wei,Tao	AWPI	72705	100	\$72,705.00	Joint Research Project Between Dapu Tech and URI	8/25/2016	8/25/2018

### Mech., Ind., Sys. Engineering

**Total: \$398,231.38**

AWARD DATE	AWARD ID	SPONSOR	INVESTIGATOR	ROLE	AWARD AMT	CREDIT	PORTION AMT	TITLE	BEGIN DATE	END DATE
7/5/2017	AWD05612	U.S. Nuclear Regulatory Commission	Nassersharif,Bahram	AWPI	126880	100	\$126,880.00	NEEPRI-NRC Scholarships	6/30/2017	6/29/2019
7/12/2017	AWD05891	RI Commerce Corporation	Nassersharif,Bahram	AWPI	49895	100	\$49,895.00	Design Investigation of Body Armor	6/12/2017	12/12/2018
7/21/2017	AWD05621	US of Office of Naval Research	Shukla,Arun	AWPI	5000	100	\$5,000.00	Implosion of Advanced Composite Structures Within Complex Underwater Environments	1/1/2017	12/31/2019
8/17/2017	AWD06138	Rhode Island Marine Trade Association	Shukla,Arun	WCPI	45000	33	\$14,850.00	Phase 1: Composite Materials for Bridges in Rhode Island	8/29/2017	12/31/2017

## DIVISION OF RESEARCH AND ECONOMIC DEVELOPMENT

AWARD DATE	AWARD ID	SPONSOR	INVESTIGATOR	ROLE	AWARD AMT	CREDIT	PORTION AMT	TITLE	BEGIN DATE	END DATE
8/30/2017	AWD06175	Rhode Island Marine Trade Association	Shukla,Arun	WCPI	45000	33	\$14,850.00	Phase 1: Composite Materials for Bridges in Rhode Island	8/29/2017	12/31/2017
9/7/2017	AWD05915	University of Connecticut STORRS	Shukla,Arun	WCPI	204114	33	\$67,357.62	Southeast New England Naval STEM Coalition: Advancing the Navy's STEM Education and Workforce Capabilities	9/1/2017	8/30/2018
8/1/2017	AWD05916	RI Commerce Corporation	Taggart,David	AWPI	50000	50	\$25,000.00	Simulation Models for Inflatable Drop Stitch Structures	7/1/2017	6/30/2018
9/7/2017	AWD05915	University of Connecticut STORRS	Taggart,David	AWPI	204114	34	\$69,398.76	Southeast New England Naval STEM Coalition: Advancing the Navy's STEM Education and Workforce Capabilities	9/1/2017	8/30/2018
8/1/2017	AWD05916	RI Commerce Corporation	Tsiatas,George	WCPI	50000	50	\$25,000.00	Simulation Models for Inflatable Drop Stitch Structures	7/1/2017	6/30/2018

### Ocean Engineering

**Total: \$303,978.02**

AWARD DATE	AWARD ID	SPONSOR	INVESTIGATOR	ROLE	AWARD AMT	CREDIT	PORTION AMT	TITLE	BEGIN DATE	END DATE
7/20/2017	AWD05503	US of Office of Naval Research	Dahl,Jason	WCPI	50000	50	\$25,000.00	Further Development and Validation of an Efficient Hybrid-BEM-LBM Model for Fluid-Structure Interaction Problems	9/1/2016	8/31/2021
7/20/2017	AWD05503	US of Office of Naval Research	Grilli,Stephan	AWPI	50000	50	\$25,000.00	Further Development and Validation of an Efficient Hybrid-BEM-LBM Model for Fluid-Structure Interaction Problems	9/1/2016	8/31/2021
7/7/2017	AWD06012	Deepwater Wind LLC	Miller,James	AWPI	40000	34	\$13,600.00	Technology Demonstration for Real Time Passive Whale Tracking Near Offshore Wind Energy Facilities	6/15/2017	8/31/2018
7/14/2017	AWD05336	US of Office of Naval Research	Miller,James	AWPI	80000	50	\$40,000.00	Low Frequency Acoustic Propagation: The Effects of Sediment Properties	4/1/2016	9/30/2019
9/7/2017	AWD05915	University of Connecticut STORRS	Miller,James	WCPI	204114	33	\$67,357.62	Southeast New England Naval STEM Coalition: Advancing the Navy's STEM Education and Workforce Capabilities	9/1/2017	8/30/2018
9/22/2017	AWD06011	US Dept of Interior	Miller,James	WCPI	166551	20	\$33,310.20	CI - Assessing Movements of Nanotagged Birds Near the Block Island Wind Farm: A Validation Study	9/22/2017	1/22/2020
7/7/2017	AWD06012	Deepwater Wind LLC	Potty,Gopu	WCPI	40000	33	\$13,200.00	Technology Demonstration for Real Time Passive Whale Tracking Near Offshore Wind Energy Facilities	6/15/2017	8/31/2018

## DIVISION OF RESEARCH AND ECONOMIC DEVELOPMENT

AWARD DATE	AWARD ID	SPONSOR	INVESTIGATOR	ROLE	AWARD AMT	CREDIT	PORTION AMT	TITLE	BEGIN DATE	END DATE
7/14/2017	AWD05336	US of Office of Naval Research	Potty,Gopu	WCPI	80000	50	\$40,000.00	Low Frequency Acoustic Propagation: The Effects of Sediment Properties	4/1/2016	9/30/2019
9/22/2017	AWD06011	US Dept of Interior	Potty,Gopu	WCPI	166551	20	\$33,310.20	CI - Assessing Movements of Nanotagged Birds Near the Block Island Wind Farm: A Validation Study	9/22/2017	1/22/2020
7/7/2017	AWD06012	Deepwater Wind LLC	Van Uffelen,Lora	WCPI	40000	33	\$13,200.00	Technology Demonstration for Real Time Passive Whale Tracking Near Offshore Wind Energy Facilities	6/15/2017	8/31/2018

## DIVISION OF RESEARCH AND ECONOMIC DEVELOPMENT

### Awards for College of the Environment and Life Sciences

From: 7/1/2017 To: 9/30/2017

Investigator Award Total: \$5,942,368.88

#### Biochem-Microb-Molecular Gen.

**Total: \$60,697.00**

AWARD DATE	AWARD ID	SPONSOR	INVESTIGATOR	ROLE	AWARD AMT	CREDIT	PORTION AMT	TITLE	BEGIN DATE	END DATE
8/7/2017	AWD04282	University of California at Davis	Rothman,Alan	AWPI	60697	100	\$60,697.00	Quantifying Heterogeneities in Dengue Virus Transmission Dynamics	5/1/2015	4/30/2017

#### CELS Academic Unit 1

**Total: \$458,101.40**

AWARD DATE	AWARD ID	SPONSOR	INVESTIGATOR	ROLE	AWARD AMT	CREDIT	PORTION AMT	TITLE	BEGIN DATE	END DATE
9/12/2017	AWD05028	US Department of Agriculture	Gomez-Chiarri,Marta	AWPI	47481	100	\$47,481.00	Defining Disease Resistant and Tolerant Phenotypes Among Selectively Bred Oyster Families	9/1/2015	8/30/2020
9/26/2017	AWD06153	Auburn University	Gomez-Chiarri,Marta	AWPI	10000	100	\$10,000.00	CELS: NRSP8 Auburn - Evaluating the Genetic Potential for Environmental Adaptation in Eastern Oysters Through Resequencing	8/1/2017	7/31/2018
8/24/2017	AWD05393	US Dept of Commerce NOAA	Humphries,Austin	AWPI	299434	60	\$179,660.40	Optimizing Kelp and Oyster Integrated Multi-Trophic Aquaculture: Developing a Spatially Explicit Ecosystem Model	9/1/2017	8/31/2019
9/6/2017	AWD04651	University of Vermont	Petersson,Katherine	AWPI	18545	100	\$18,545.00	New Approaches for Improving Integrated Parasite Control Strategies in the Northeast	9/1/2015	12/31/2018
9/22/2017	AWD06079	University of Vermont	Petersson,Katherine	AWPI	14640	100	\$14,640.00	The Effect of Season Upon the Life Cycle and Development of Haemonchus Contortus in Experimentally Infected Lambs	7/24/2017	5/31/2019
8/21/2017	AWD05374	RI Department of Health	Pivarnik,Lori	AWPI	40975	100	\$40,975.00	RI Plan to Enhance produce Safety by Implementing the DFA FSMA produce Safety Rule	7/1/2017	6/30/2018
9/5/2017	AWD03778	US Department of Agriculture	Sebelia,Linda	AWPI	140000	100	\$140,000.00	CELS: INTEGRATING NUTRITION EDUCATION INTO PROVIDENCE FULL SERVICE SCHOOLS IN PROVIDENCE RI	9/1/2013	8/31/2018

## DIVISION OF RESEARCH AND ECONOMIC DEVELOPMENT

AWARD DATE	AWARD ID	SPONSOR	INVESTIGATOR	ROLE	AWARD AMT	CREDIT	PORTION AMT	TITLE	BEGIN DATE	END DATE
7/28/2017	AWD05799	Providence Parks and Recreation	Venturini, Kate	AWPI	6800	100	\$6,800.00	Learning Landscape Field Trips at Roger Williams Park Botanical Center	1/1/2016	12/31/2017

### CELS Academic Unit 2

**Total: \$2,271,949.68**

AWARD DATE	AWARD ID	SPONSOR	INVESTIGATOR	ROLE	AWARD AMT	CREDIT	PORTION AMT	TITLE	BEGIN DATE	END DATE
7/18/2017	AWD05905	US Fish and Wildlife Service	August, Peter	AWPI	45203	100	\$45,203.00	CI - Long Island Sound Eelgrass Mapping and Trends Analysis	7/11/2017	6/30/2018
7/20/2017	AWD05894	Rhode Island Division of Planning	August, Peter	AWPI	56000	100	\$56,000.00	CI - FY18 Sustaining and Enhancing Access to the Rhode Island Geographic Information System (RIGIS)	7/1/2017	6/30/2018
7/31/2017	AWD05695	RI Dept of Environ Magt	August, Peter	AWPI	12620	100	\$12,620.00	CI - GPS Elevation Analysis for Tier 3 of Salt Marsh Monitoring and Assessment Plan for the State of Rhode Island	7/14/2017	5/31/2018
8/29/2017	AWD04871	US Dept of Interior	August, Peter	AWPI	92070	25	\$23,017.50	CI - Resource Based Geospatial and Enterprise GIS Support to the NER of the NPS FY15	8/24/2017	9/15/2018
9/20/2017	AWD05886	US Dept of Interior	August, Peter	AWPI	35000	100	\$35,000.00	CI - Development of a Web-Based System to Geoenable NER Parks and Programs	9/15/2017	3/1/2018
7/13/2017	AWD04872	US Army Corps of Engineers	Becker, Austin H	AWPI	39700	100	\$39,700.00	CI - Measuring Risk to Inform Resilience: Pilot Study for North Atlantic Medium and High Use Maritime Freight Nodes	6/20/2016	12/19/2017
8/24/2017	AWD04872	US Army Corps of Engineers	Becker, Austin H	AWPI	94555	100	\$94,555.00	CI - Measuring Risk to Inform Resilience: Pilot Study for North Atlantic Medium and High Use Maritime Freight Nodes	6/20/2016	12/19/2018
9/15/2017	AWD05913	RI Office of Housing & Comm Development	Boving, Thomas	WCPI	582913	50	\$291,456.50	Assessment and Modeling of Saltwater Intrusion into Coastal Aquifers of Rhode Island	8/25/2017	8/30/2019
9/12/2017	AWD06148	RI Resource Conservation & Development C	Buffum, William	AWPI	40000	100	\$40,000.00	Forestry Assistance to NRCS	10/1/2017	9/30/2018
7/18/2017	AWD06047	Brown University	Cardace, Dawn	AWPI	8925	100	\$8,925.00	Microbial Attachment Processes in Rock-Powered Ecosystems	6/1/2017	8/31/2017
7/18/2017	AWD06048	Brown University	Cardace, Dawn	AWPI	33453	100	\$33,453.00	Mapping Carbonaceous Matter in Serpentinites: Occurrence and Importance to Astrobiology	9/1/2017	5/31/2018

## DIVISION OF RESEARCH AND ECONOMIC DEVELOPMENT

AWARD DATE	AWARD ID	SPONSOR	INVESTIGATOR	ROLE	AWARD AMT	CREDIT	PORTION AMT	TITLE	BEGIN DATE	END DATE
9/7/2017	AWD04224	University of Colorado Boulder	Cardace,Dawn	AWPI	111895	100	\$111,895.00	Rock Powered Life: Revealing Mechanisms of Energy Transfer from the Lithosphere to the Biosphere	4/29/2015	12/31/2019
8/29/2017	AWD04871	US Dept of Interior	Cressman,Jessica A.	WCPI	92070	25	\$23,017.50	CI - Resource Based Geospatial and Enterprise GIS Supplort to the NER of the NPS FY15	8/24/2017	9/15/2018
7/24/2017	AWD05405	US Dept of Interior	Druschke,Caroline	AWPI	69994	100	\$69,994.00	CI - Science Communication Outreach for the Northeast Coastal and Barrier Network	6/15/2016	9/30/2018
8/29/2017	AWD04871	US Dept of Interior	Duhaime,Roland	WCPI	92070	25	\$23,017.50	CI - Resource Based Geospatial and Enterprise GIS Supplort to the NER of the NPS FY15	8/24/2017	9/15/2018
8/3/2017	AWD06004	RI Department of Health	Gold,Arthur	WCPI	525000	33	\$173,250.00	CI - Municipal Capacity Training and Public Outreach Source Water Protection Project	7/1/2017	6/30/2020
8/3/2017	AWD06004	RI Department of Health	Joubert,Lorraine	AWPI	525000	34	\$178,500.00	CI - Municipal Capacity Training and Public Outreach Source Water Protection Project	7/1/2017	6/30/2020
8/29/2017	AWD04871	US Dept of Interior	Labash,Charles	WCPI	92070	25	\$23,017.50	CI - Resource Based Geospatial and Enterprise GIS Supplort to the NER of the NPS FY15	8/24/2017	9/15/2018
8/3/2017	AWD06004	RI Department of Health	Mccann,Alyson	WCPI	525000	33	\$173,250.00	CI - Municipal Capacity Training and Public Outreach Source Water Protection Project	7/1/2017	6/30/2020
9/12/2017	AWD04989	University of North Carolina - CH	Opaluch,James	WCPI	238992	24	\$57,358.08	CI - Dept. of Homeland Security Coastal Resilience Center of Excellence Projects	1/1/2016	6/30/2018
8/14/2017	AWD06141	US Fish and Wildlife Service	Paton,Peter	AWPI	60000	100	\$60,000.00	Technical Assistance for Digital VHF Telemetry projects in the Northeast	8/31/2017	1/31/2019
9/22/2017	AWD06011	US Dept of Interior	Paton,Peter	AWPI	166551	60	\$99,930.60	CI - Assessing Movements of Nanotagged Birds Near the Block Island Wind Farm: A Validation Study	9/22/2017	1/22/2020
9/15/2017	AWD05913	RI Office of Housing & Comm Development	Pradhanang,Soni	AWPI	582913	50	\$291,456.50	Assessment and Modeling of Saltwater Intrusion into Coastal Aquifers of Rhode Island	8/25/2017	8/30/2019
7/24/2017	AWD06092	The Nature Conservancy	Stolt,Mark	AWPI	12000	100	\$12,000.00	Using Thin-Layer Deposition to Manage Sea-Level Rise in Tidal Marshes	3/1/2017	12/31/2017
9/28/2017	AWD06136	US Department of Agriculture	Stolt,Mark	AWPI	100000	100	\$100,000.00	Soil Carbon Stocks, Hydrology, and Hydric Soils of Northeastern Vernal Pools	9/6/2017	9/30/2019
7/20/2017	AWD06126	National Science Foundation	Zawia,Nasser	AWPI	195333	100	\$195,333.00	Felicia Woods, Danielle Perry	8/1/2017	7/31/2022

## DIVISION OF RESEARCH AND ECONOMIC DEVELOPMENT

### CELS Academic Unit 3

Total: \$3,151,620.80

AWARD DATE	AWARD ID	SPONSOR	INVESTIGATOR	ROLE	AWARD AMT	CREDIT	PORTION AMT	TITLE	BEGIN DATE	END DATE
7/21/2017	AWD04237	National Science Foundation	Kausch,Albert	AWPI	535399	100	\$535,399.00	Transforming Cereal Genomics: Toolng up for Empowered Cereal Crop Phenotyping Platforms	8/1/2015	7/31/2019
8/4/2017	AWD04773	National Science Foundation	Lane,Christopher	AWPI	134469	100	\$134,469.00	GoLife: Bringing the Diverse Microbial Clade Stramenopila + Alveolata + Rhizaria (SAR) into a Modern Genomic Content	9/1/2015	8/31/2020
9/15/2017	AWD04885	Restore America's Estuaries	Moseman-Valtierra,Serena	AWPI	3707	100	\$3,707.00	Expanding Blue Carbon Implementation: Increasing GHG Model Application in Tidally Restricted and Restored New England Salt Marshes	1/1/2016	8/31/2018
9/22/2017	AWD06206	US-Israel Binational Foundation	Putnam,Hollie	AWPI	30000	100	\$30,000.00	Function of Acid-Rich Proteins in Coral Biomineralization Across Diverse Climates	9/1/2017	8/31/2018
9/25/2017	AWD03994	Pennsylvania State University	Roberts,Alison	AWPI	108917	100	\$108,917.00	CENTER FOR LIGNOCELLULOSE STRUCTURE AND FORMATION (CLSF)	8/1/2014	7/31/2018
7/17/2017	AWD05988	National Institute of Health	Rothman,Alan	AWPI	2249648	100	\$2,249,648.00	FLAVIVIRUS INFECTIONS: PATHOGENESIS AND PREVENTION	7/1/2017	6/30/2018
9/14/2017	AWD04971	CHEROKEE NATION TECHNOLOGY SOLUTIONS	Rothman,Alan	AWPI	29594	100	\$29,594.00	Development of Immunology Research Agenda To Support the WRAIR...	8/1/2015	3/31/2018
8/24/2017	AWD05393	US Dept of Commerce NOAA	Thornber,Carol	WCPI	299434	20	\$59,886.80	Optimizing Kelp and Oyster Integrated Multi-Trophic Aquaculture: Developing a Spatially Explicit Ecosystem Model	9/1/2017	8/31/2019



# DIVISION OF RESEARCH AND ECONOMIC DEVELOPMENT

## Awards for Graduate School of Oceanography

From: 7/1/2017 To: 9/30/2017

Investigator Award Total: \$6,839,349.39

### GSO Coastal Institute

**Total: \$16,000.00**

AWARD DATE	AWARD ID	SPONSOR	INVESTIGATOR	ROLE	AWARD AMT	CREDIT	PORTION AMT	TITLE	BEGIN DATE	END DATE
8/31/2017	AWD06176	US Dept of Interior	Swift, Judith	AWPI	16000	100	\$16,000.00	CI - CESU Host - Leadership, Coordination and Administrative Oversight for the North Atlantic Coast Cooperative	8/30/2017	12/31/2020

### GSO Coastal Resources Center

**Total: \$12,148.00**

AWARD DATE	AWARD ID	SPONSOR	INVESTIGATOR	ROLE	AWARD AMT	CREDIT	PORTION AMT	TITLE	BEGIN DATE	END DATE
8/25/2017	AWD05481	RI Coastal Res Mgt. Council	Mccann, Jennifer	AWPI	12148	100	\$12,148.00	CI - Update and Revision of the Metro Bay SAMP Documents and 1978 Energy Amendments	7/1/2016	7/31/2018

### GSO Facilities

**Total: \$295,000.00**

AWARD DATE	AWARD ID	SPONSOR	INVESTIGATOR	ROLE	AWARD AMT	CREDIT	PORTION AMT	TITLE	BEGIN DATE	END DATE
8/2/2017	AWD05041	AIR FORCE RESEARCH LABORATORY	Bao, Xueyang	WCPI	35000	30	\$10,500.00	Integrated Deterministic and Stochastic Full-Waveform Earth Models for Broadband Wave Propagation and Prediction	5/10/2016	10/31/2018
8/2/2017	AWD05041	AIR FORCE RESEARCH LABORATORY	Bao, Xueyang	WCPI	145000	30	\$43,500.00	Integrated Deterministic and Stochastic Full-Waveform Earth Models for Broadband Wave Propagation and Prediction	5/10/2016	10/31/2018
9/21/2017	AWD05041	AIR FORCE RESEARCH LABORATORY	Bao, Xueyang	WCPI	20000	30	\$6,000.00	Integrated Deterministic and Stochastic Full-Waveform Earth Models for Broadband Wave Propagation and Prediction	5/10/2016	12/31/2017

## DIVISION OF RESEARCH AND ECONOMIC DEVELOPMENT

AWARD DATE	AWARD ID	SPONSOR	INVESTIGATOR	ROLE	AWARD AMT	CREDIT	PORTION AMT	TITLE	BEGIN DATE	END DATE
7/31/2017	AWD04094	US Dept of Commerce NOAA	Murray,Cynthia J	AWPI	235000	100	\$235,000.00	A Proposal for the Support of Continuing and New Activities of the National Sea Grant Library	3/1/2014	2/28/2018

### GSO Faculty

**Total: \$6,491,201.39**

AWARD DATE	AWARD ID	SPONSOR	INVESTIGATOR	ROLE	AWARD AMT	CREDIT	PORTION AMT	TITLE	BEGIN DATE	END DATE
7/18/2017	AWD04236	National Science Foundation	Alberts,Jonathan	AWPI	154520	50	\$77,260.00	UNIVERSIEY-NATIONAL OCEANOGRAPHIC LABORATORY SYSTEM	5/1/2014	4/30/2019
9/26/2017	AWD04236	National Science Foundation	Alberts,Jonathan	AWPI	107647	50	\$53,823.50	UNIVERSIEY-NATIONAL OCEANOGRAPHIC LABORATORY SYSTEM	5/1/2014	4/30/2019
8/22/2017	AWD05851	National Science Foundation	Beinart,Roxanne	AWPI	585618	100	\$585,618.00	The Impact of Symbiont-Larval Interactions on Species Distribution Across Southwestern Pacific Hydrothermal Vents	9/1/2018	8/31/2021
7/7/2017	AWD05119	National Science Foundation	Coleman,Dwight	WCPI	746400	15	\$111,960.00	CI - Northwest Passage Project	7/1/2016	8/31/2019
7/13/2017	AWD06077	OCEAN EXPLORATION TRUST	Coleman,Dwight	AWPI	85000	100	\$85,000.00	OET Partnership with the URI Inner Space Center to Support Systematic Ocean Exploration	7/1/2017	6/30/2018
7/21/2017	AWD06091	Naval Undersea Warfare Center	Coleman,Dwight	AWPI	20000	100	\$20,000.00	NUWC Collaboration with the URI Inner Space Center for Educational Outreach	7/22/2017	7/21/2018
8/18/2017	AWD06144	OCEAN EXPLORATION TRUST	Coleman,Dwight	AWPI	118000	100	\$118,000.00	OET Partnership with the URI Inner Space Center to Support Systematic Ocean Exploration - 2017-2018 E/V Nautilus Season	8/1/2017	12/31/2017
8/22/2017	AWD05119	National Science Foundation	Coleman,Dwight	WCPI	113754	15	\$17,063.10	CI - Northwest Passage Project	7/1/2016	8/31/2019
9/1/2017	AWD06129	US Dept of Commerce NOAA	Coleman,Dwight	AWPI	300000	100	\$300,000.00	NOAA_OER Partnership with the URI Inner Space Center to Support Systematic Ocean Exploration - 2017 and 2018	9/1/2017	8/31/2019
7/28/2017	AWD03707	US Dept of Interior	Collie,Jeremy	AWPI	400000	50	\$200,000.00	CI SOUTHERN NEW ENGLAND VENTLESS TRAP SURVEY	7/3/2013	7/15/2019
8/10/2017	AWD05378	NatAeronautics & Space Admin	Cornillon,Peter	AWPI	130751	60	\$78,450.60	Improved Spatial Resolution Sea Surface Temperature Fields from AMSR-E	4/18/2016	4/17/2019

## DIVISION OF RESEARCH AND ECONOMIC DEVELOPMENT

AWARD DATE	AWARD ID	SPONSOR	INVESTIGATOR	ROLE	AWARD AMT	CREDIT	PORTION AMT	TITLE	BEGIN DATE	END DATE
7/18/2017	AWD04236	National Science Foundation	Desilva,Annette	WCPI	154520	50	\$77,260.00	UNIVERSIEY-NATIONAL OCEANOGRAPHIC LABORATORY SYSTEM	5/1/2014	4/30/2019
9/26/2017	AWD04236	National Science Foundation	Desilva,Annette	WCPI	107647	50	\$53,823.50	UNIVERSIEY-NATIONAL OCEANOGRAPHIC LABORATORY SYSTEM	5/1/2014	4/30/2019
8/21/2017	AWD04733	National Science Foundation	Donohue,Kathleen	WCPI	75666	50	\$37,833.00	Collab. Research: The Oleander Project High Resolution Observations of the Dynamic Ocean Between New Jersey and Bermuda	9/15/2015	8/31/2020
9/12/2017	AWD04989	University of North Carolina - CH	Ginis,Isaac	WCPI	238992	52	\$124,275.84	CI - Dept. of Homeland Security Coastal Resilience Center of Excellence Projects	1/1/2016	6/30/2018
9/28/2017	AWD06102	National Science Foundation	Graham,Rebecca	AWPI	390647	100	\$390,647.00	Collab. Research: Tracking the Subtropical Front Across the Mid Pleistocene Transition Using Sea Surface Temperature and Nutrients	9/1/2017	8/31/2020
8/8/2017	AWD04940	US Dept of Commerce NOAA	Kenney,Robert D	AWPI	99999	100	\$99,999.00	Maintain and Curate the North Atlantic Right Whale Sightings Database.	9/1/2015	8/31/2018
8/24/2017	AWD05393	US Dept of Commerce NOAA	Kincaid,Christopher	WCPI	299434	20	\$59,886.80	Optimizing Kelp and Oyster Integrated Multi-Trophic Aquaculture: Developing a Spatially Explicit Ecosystem Model	9/1/2017	8/31/2019
7/28/2017	AWD03707	US Dept of Interior	King,John	WCPI	400000	50	\$200,000.00	CI SOUTHERN NEW ENGLAND VENTLESS TRAP SURVEY	7/3/2013	7/15/2019
9/29/2017	AWD04109	National Science Foundation	King,John W	AWPI	1535	100	\$1,535.00	Collab. Research: Sediment Pathways, Sedimentation Processes, and Structural Growth Along the Tohoku Segment of the Japan Subduction Margin: Role of Megathrust Earthquakes	8/1/2014	7/31/2017
7/7/2017	AWD05119	National Science Foundation	Loose,Brice	WCPI	746400	15	\$111,960.00	CI - Northwest Passage Project	7/1/2016	8/31/2019
8/22/2017	AWD05119	National Science Foundation	Loose,Brice	WCPI	113754	15	\$17,063.10	CI - Northwest Passage Project	7/1/2016	8/31/2019
8/17/2017	AWD05945	US of Office of Naval Research	Omand,Melissa	AWPI	40151	100	\$40,151.00	Penetrative Flux, Barrier Layer Collapse, and ISO Feedbacks	8/1/2017	7/31/2019
7/5/2017	AWD05946	National Science Foundation	Palter,Jaime	AWPI	290962	100	\$290,962.00	Analysis Phase of the Lagrangian Isopycnal Dispersion Experiment (AP-LIDEX)	9/1/2017	8/30/2020
8/10/2017	AWD05378	NatAeronautics & Space Admin	Puggioni,Gavino	WCPI	130751	40	\$52,300.40	Improved Spatial Resolution Sea Surface Temperature Fields from AMSR-E	4/18/2016	4/17/2019
7/24/2017	AWD06093	US Dept of Commerce NOAA	Roman,Christopher	AWPI	58214	100	\$58,214.00	CI Use of a Lagrangian Camera Float in Association with Surveys to Examine Benthic Habitats and Associated Fish: Operational Test to Improving Survey-	7/19/2017	8/31/2018

## DIVISION OF RESEARCH AND ECONOMIC DEVELOPMENT

AWARD DATE	AWARD ID	SPONSOR	INVESTIGATOR	ROLE	AWARD AMT	CREDIT	PORTION AMT	TITLE	BEGIN DATE	END DATE
								Based Estimates of Abundance		
9/1/2017	AWD05752	US Dept of Commerce NOAA	Roman,Christopher	AWPI	290621	100	\$290,621.00	Integration of Acoustic Echosounding into the Wire Flyer Profiling Vehicle to Investigate Scattering Layer Distribution and Oxygen Coupling	9/1/2017	8/31/2019
8/21/2017	AWD04733	National Science Foundation	Rosby,Hans T	AWPI	75666	50	\$37,833.00	Collab. Research: The Oleander Project High Resolution Observations of the Dynamic Ocean Between New Jersey and Bermuda	9/15/2015	8/31/2020
9/21/2017	AWD05500	National Science Foundation	Rothstein,Lewis	WCPI	4535519	25	\$1,133,879.75	RII Track-1: Enhancing Rhode Island's Coastal Environment to Enable Growth in a Blue Economy	8/1/2017	7/31/2022
7/7/2017	AWD05119	National Science Foundation	Scowcroft,Gail	AWPI	746400	70	\$522,480.00	CI - Northwest Passage Project	7/1/2016	8/31/2019
7/18/2017	AWD05136	US of Office of Naval Research	Scowcroft,Gail	AWPI	97545	100	\$97,545.00	Discovery of Sound in the Sea	1/1/2016	12/31/2017
8/22/2017	AWD05119	National Science Foundation	Scowcroft,Gail	AWPI	113754	70	\$79,627.80	CI - Northwest Passage Project	7/1/2016	8/31/2019
8/2/2017	AWD05041	AIR FORCE RESEARCH LABORATORY	Shen,Yang	AWPI	145000	70	\$101,500.00	Integrated Deterministic and Stochastic Full-Waveform Earth Models for Broadband Wave Propagation and Prediction	5/10/2016	10/31/2018
8/2/2017	AWD05041	AIR FORCE RESEARCH LABORATORY	Shen,Yang	AWPI	35000	70	\$24,500.00	Integrated Deterministic and Stochastic Full-Waveform Earth Models for Broadband Wave Propagation and Prediction	5/10/2016	10/31/2018
9/21/2017	AWD05616	AIR FORCE RESEARCH LABORATORY	Shen,Yang	AWPI	78000	95	\$74,100.00	Pinpointing Seismic Events with Body Waves Scattered by Topography Near the Source Region	5/31/2017	8/31/2019
9/21/2017	AWD05041	AIR FORCE RESEARCH LABORATORY	Shen,Yang	AWPI	20000	70	\$14,000.00	Integrated Deterministic and Stochastic Full-Waveform Earth Models for Broadband Wave Propagation and Prediction	5/10/2016	12/31/2017
7/7/2017	AWD06137	Commonwealth of Massachusetts	Stoffel,Heather	AWPI	114220	100	\$114,220.00	CI- EXPANSION OF THE NARRAGANSETT BAY FIXED SITE YEAR 2	7/1/2017	6/30/2018
9/21/2017	AWD05616	AIR FORCE RESEARCH LABORATORY	Wang,Nian	WCPI	78000	5	\$3,900.00	Pinpointing Seismic Events with Body Waves Scattered by Topography Near the Source Region	5/31/2017	8/31/2019
8/18/2017	AWD05951	KOREA INSTITUTE OF OCEAN SCIENCE & TECHN	Watts,D Randolph	AWPI	62537	100	\$62,537.00	Keep Studies by Korean Institute of Ocean Science and Technology (KIOST): 1 combined CPIES	4/1/2017	3/31/2020

## DIVISION OF RESEARCH AND ECONOMIC DEVELOPMENT

AWARD DATE	AWARD ID	SPONSOR	INVESTIGATOR	ROLE	AWARD AMT	CREDIT	PORTION AMT	TITLE	BEGIN DATE	END DATE
8/18/2017	AWD05949	KOREA INSTITUTE OF OCEAN SCIENCE & TECHN	Watts,D Randolph	AWPI	43000	100	\$43,000.00	Kuroshio Observations by Korean Institute of Ocean Science (KIOST): 1 PIES, CM-ready	4/1/2017	3/31/2020
8/18/2017	AWD05950	KOREA INSTITUTE OF OCEAN SCIENCE & TECHN	Watts,D Randolph	AWPI	19537	100	\$19,537.00	Kuroshio Observations by Korean Institute of Ocean Science and Technology (KIOST): Current Meter Option	4/1/2017	3/31/2020
8/18/2017	AWD06015	University of Cape Town	Watts,D Randolph	AWPI	5832	100	\$5,832.00	Release Rearing Kits for Agulhas-South Atlantic Studies	5/1/2017	4/30/2020
9/14/2017	AWD05746	SEISMIC MARINE TECHNOLOGY LIMITED	Watts,D Randolph	AWPI	1450	100	\$1,450.00	Observing the North Equatorial Current Using 2 PIES	12/20/2016	12/19/2019
8/7/2017	AWD05476	National Science Foundation	Wei,Meng	AWPI	601553	100	\$601,553.00	Career: Integration of Rate-and-State Friction and Viscoelastic Flow to Model Earthquake Cycles on an Oceanic Transform Fault	8/1/2017	7/31/2022

### GSO Rhode Island Sea Grant

**Total: \$25,000.00**

AWARD DATE	AWARD ID	SPONSOR	INVESTIGATOR	ROLE	AWARD AMT	CREDIT	PORTION AMT	TITLE	BEGIN DATE	END DATE
8/17/2017	AWD03971	US Dept of Commerce NOAA	Nixon,Dennis W	AWPI	25000	100	\$25,000.00	RHODE ISLAND SEA GRANT 2014-2018 OMNIBUS	4/1/2017	1/31/2019

## DIVISION OF RESEARCH AND ECONOMIC DEVELOPMENT

### Awards for College of Health Sciences

From: 7/1/2017 To: 9/30/2017

Investigator Award Total: \$1,476,576.46

#### Cancer Prevention Res. Ctr

**Total: \$423,451.93**

AWARD DATE	AWARD ID	SPONSOR	INVESTIGATOR	ROLE	AWARD AMT	CREDIT	PORTION AMT	TITLE	BEGIN DATE	END DATE
9/27/2017	AWD05074	Brown University	Laforge,Robert	AWPI	89485	100	\$89,485.00	Motivational and Contextual Influences on Patterns of Simultaneous Alcohol and Marijuana Use: A Daily Assessment Study	5/1/2017	4/30/2018
9/12/2017	AWD04989	University of North Carolina - CH	Prochaska,James O	WCPI	238992	24	\$57,358.08	CI - Dept. of Homeland Security Coastal Resilience Center of Excellence Projects	1/1/2016	6/30/2018
8/16/2017	AWD05816	National Science Foundation	Redding,Colleen	WCPI	99439	15	\$14,915.85	SCC-Planning: Smart and Connected Residential Water Quality Community	8/15/2017	7/31/2018
9/13/2017	AWD05091	Yale University	Redding,Colleen	AWPI	125133	100	\$125,133.00	Enhancing Engagement in Advance Care Planning	9/27/2016	6/30/2018
9/7/2017	AWD04811	Kent Center	Stein,Lynda	AWPI	12500	100	\$12,500.00	Healthy Transitions - The Kent Center	10/1/2015	9/29/2018
9/15/2017	AWD04809	RI Dept of Behavioral Healthcare,Develop	Stein,Lynda	AWPI	124060	100	\$124,060.00	Healthy Transitions - BHDDH	1/1/2015	9/29/2018

#### Human Development & Family Stu

**Total: \$50,000.00**

AWARD DATE	AWARD ID	SPONSOR	INVESTIGATOR	ROLE	AWARD AMT	CREDIT	PORTION AMT	TITLE	BEGIN DATE	END DATE
9/27/2017	AWD06016	The Spencer Foundation	Vaccaro,Annemarie	PI	50000	100	\$50,000.00	IIHI - Making Disability Visible in Higher Education Research: Addressing Quantitative, Qualitative, and Theoretical Limitations	11/1/2017	10/31/2018

## DIVISION OF RESEARCH AND ECONOMIC DEVELOPMENT

### Nutrition & Food Sciences

**Total: \$415,465.53**

AWARD DATE	AWARD ID	SPONSOR	INVESTIGATOR	ROLE	AWARD AMT	CREDIT	PORTION AMT	TITLE	BEGIN DATE	END DATE
8/3/2017	AWD05509	RI Dept of Human Services	Sebelia,Linda	AWPI	359470	100	\$359,470.00	RI SNAP-Ed 2017	10/1/2014	9/30/2017
7/28/2017	AWD06116	Produce for Better Health Foundation	Vadivelloo,Maya	AWPI	5995.53	100	\$5,995.53	PBH Grant Transfer: Manipulating the Sensory Variety of Fruits and Vegetables to Increase Their Intake	10/15/2015	6/30/2018
8/28/2017	AWD05956	Foundation for Food & Agriculture Resear	Vadivelloo,Maya	AWPI	100000	50	\$50,000.00	IIHI - Targeted Incentives, Food Purchases and Health Outcomes	9/1/2017	8/31/2018

### Physical Therapy

**Total: \$179,811.00**

AWARD DATE	AWARD ID	SPONSOR	INVESTIGATOR	ROLE	AWARD AMT	CREDIT	PORTION AMT	TITLE	BEGIN DATE	END DATE
7/10/2017	AWD06060	RI Dept of Behavioral Healthcare,Develop	Hulme,Janice	AWPI	179811	100	\$179,811.00	URI/BHDDH Collaborative Agreement for Physical Therapy Services	7/1/2017	6/30/2018

### Psychology

**Total: \$407,848.00**

AWARD DATE	AWARD ID	SPONSOR	INVESTIGATOR	ROLE	AWARD AMT	CREDIT	PORTION AMT	TITLE	BEGIN DATE	END DATE
7/2/2017	AWD05909	RI Dept of Behavioral Healthcare,Develop	Florin,Paul	AWPI	142114	50	\$71,057.00	IIHI - Evaluation of Statewide Rhode Island Prevention Infrastructure Innovation	7/26/2017	6/30/2018
8/11/2017	AWD03835	RI Dept of Behavioral Healthcare,Develop	Florin,Paul R	AWPI	182464	100	\$182,464.00	LOCAL LEVEL EVALUATION OF PARTNERSHIPS FOR SUCCESS	9/30/2013	9/30/2017
8/11/2017	AWD03834	RI Dept of Behavioral Healthcare,Develop	Florin,Paul R	AWPI	83270	100	\$83,270.00	STATE LEVEL EVALUATION BUDGET FOR RI PARTNERSHIP FOR SUCCESS	9/30/2015	9/30/2017

## DIVISION OF RESEARCH AND ECONOMIC DEVELOPMENT

AWARD DATE	AWARD ID	SPONSOR	INVESTIGATOR	ROLE	AWARD AMT	CREDIT	PORTION AMT	TITLE	BEGIN DATE	END DATE
7/2/2017	AWD05909	RI Dept of Behavioral Healthcare, D evelop	Skierkowski, Dorothy	WCPI	142114	50	\$71,057.00	IIHI - Evaluation of Statewide Rhode Island Prevention Infrastructure Innovation	7/26/2017	6/30/2018



## DIVISION OF RESEARCH AND ECONOMIC DEVELOPMENT

### Awards for College of Pharmacy

From: 7/1/2017 To: 9/30/2017

Investigator Award Total: \$1,629,781.00

#### Biomedical & Pharm. Sciences

**Total: \$1,465,076.00**

AWARD DATE	AWARD ID	SPONSOR	INVESTIGATOR	ROLE	AWARD AMT	CREDIT	PORTION AMT	TITLE	BEGIN DATE	END DATE
9/14/2017	AWD04688	National Institute of Health	Chen,Xinyuan	AWPI	\$245,645.00	100	\$245,645.00	Delivery and Adjuvantation of Nicotine Vaccine by Laser Illumination	6/15/2015	5/31/2018
8/22/2017	AWD05630	National Institute of Health	Cho,Bongsup	AWPI	\$209,154.00	100	\$209,154.00	Arylamine DNA Adduct Recognition in Eukaryotic Nucleotide Excision Repair	9/1/2017	8/31/2018
8/25/2017	AWD05933	Brown University	Ghonem,Nisanne	AWPI	\$216,400.00	100	\$216,400.00	An In Vivo Study of Treprostinil, a Prostacyclin Analog, in the Prevention of Ischemia-Reperfusion Injury to the Kidney	7/1/2017	6/30/2018
8/4/2017	AWD04927	Moleculera Labs	Kovoor,Abraham	AWPI	\$11,000.00	100	\$11,000.00	Preparation of D2 Dopamine Receptor-Expressing SF9 Cell Membranes	8/1/2015	7/31/2018
7/28/2017	AWD05820	National Institute of Health	Li,Deyu	AWPI	\$410,961.00	100	\$410,961.00	Inhibitory Effect of Nitric Oxide on DNA Repair Enzymes	8/1/2017	7/31/2020
8/18/2017	AWD05893	National Institute of Health	Shaikh,Zahir	AWPI	\$371,916.00	100	\$371,916.00	Rhode Island IDeA Network for Biomedical Research Excellence	5/1/2017	4/30/2018

#### Pharmacy Practice

**Total: \$114,705.00**

AWARD DATE	AWARD ID	SPONSOR	INVESTIGATOR	ROLE	AWARD AMT	CREDIT	PORTION AMT	TITLE	BEGIN DATE	END DATE
9/25/2017	AWD04875	Boston University Medical Center	Bratberg,Jeffrey	AWPI	\$12,106.00	100	\$12,106.00	Advancing Patient Safety Implementation through Pharmacy - Based Opioid Medication Use Research	8/1/2015	6/30/2018
8/6/2017	AWD05563	Harvard University	Buchanan,Ashley	AWPI	\$37,029.00	100	\$37,029.00	New Methods for the Design and Evaluation of Large HIV Prevention Interventions	9/1/2016	5/31/2018

## DIVISION OF RESEARCH AND ECONOMIC DEVELOPMENT

AWARD DATE	AWARD ID	SPONSOR	INVESTIGATOR	ROLE	AWARD AMT	CREDIT	PORTION AMT	TITLE	BEGIN DATE	END DATE
9/14/2017	AWD05935	Arkansas Children's Research Institute	Caffrey,Aisling	AWPI	\$15,683.00	100	\$15,683.00	IIHI - Patient and Stakeholder Alliance for SATB2-Associated Syndrome	6/1/2017	5/31/2018
8/11/2017	AWD06139	VERASTEM, INC.	Kogut,Stephen	AWPI	\$49,887.00	50	\$24,943.50	Pharmacoeconomics of Chronic Lymphocytic Leukemia: Focus on Novel Oral Targeted Therapies	6/1/2017	5/1/2018
8/11/2017	AWD06139	VERASTEM, INC.	Vyas,Ami	WCPI	\$49,887.00	25	\$12,471.75	Pharmacoeconomics of Chronic Lymphocytic Leukemia: Focus on Novel Oral Targeted Therapies	6/1/2017	5/1/2018
8/11/2017	AWD06139	VERASTEM, INC.	Wen,Xuerong	WCPI	\$49,887.00	25	\$12,471.75	Pharmacoeconomics of Chronic Lymphocytic Leukemia: Focus on Novel Oral Targeted Therapies	6/1/2017	5/1/2018

### Ryan Institute Neuroscience

**Total: \$50,000.00**

AWARD DATE	AWARD ID	SPONSOR	INVESTIGATOR	ROLE	AWARD AMT	CREDIT	PORTION AMT	TITLE	BEGIN DATE	END DATE
9/26/2017	AWD06207	RI Commerce Corporation	Brackee,Gordon	AWPI	\$50,000.00	100	\$50,000.00	Ryan Institute - In Vivo Imaging and Behavioral Pharmacology Support for Alzheimer's Drug Development	1/1/2017	12/31/2017

# DIVISION OF RESEARCH AND ECONOMIC DEVELOPMENT

## Awards for Research & Economic Development

From: 7/1/2017 To: 9/30/2017

Investigator Award Total: \$484,299.00

### Research

**Total: \$484,299.00**

AWARD DATE	AWARD ID	SPONSOR	INVESTIGATOR	ROLE	AWARD AMT	CREDIT	PORTION AMT	TITLE	BEGIN DATE	END DATE
8/10/2017	AWD05557	US Small Business Admin	Huttenhower,Edward	AWPI	484299	100	\$484,299.00	Rhode Island Small Business Development Center - 2017	1/1/2017	12/31/2017