

2017

# Division of Research and Economic Development Monthly Report for May 2017

URI Division of Research and Economic Development

Follow this and additional works at: [http://digitalcommons.uri.edu/researchecondev\\_reports](http://digitalcommons.uri.edu/researchecondev_reports)

---

## Recommended Citation

URI Division of Research and Economic Development, "Division of Research and Economic Development Monthly Report for May 2017" (2017). *Reports (Research and Economic Development)*. Paper 92.  
[http://digitalcommons.uri.edu/researchecondev\\_reports/92](http://digitalcommons.uri.edu/researchecondev_reports/92)[http://digitalcommons.uri.edu/researchecondev\\_reports/92](http://digitalcommons.uri.edu/researchecondev_reports/92)

This Periodical is brought to you for free and open access by the Division of Research and Economic Development at DigitalCommons@URI. It has been accepted for inclusion in Reports (Research and Economic Development) by an authorized administrator of DigitalCommons@URI. For more information, please contact [digitalcommons@etal.uri.edu](mailto:digitalcommons@etal.uri.edu).



THE  
UNIVERSITY  
OF RHODE ISLAND

Division of Research and Economic Development

## May FY17 Monthly Awards Report

THINK BIG  WE DO™



Table 1. FY17 Awards through the Division of Research and Economic Development including awards through URIRF as of May FY17

Month	FY13				FY14			
	Number		Amount Awarded		Number		Amount Awarded	
	Count	Cum. Ct.	Amount	Cum. Amt.	Count	Cum. Ct.	Amount	Cum. Amt.
July	18	18	\$2,130,245.92	\$2,130,245.92	39	39	\$4,139,716.95	\$4,139,716.95
August	51	69	\$13,973,655.37	\$16,103,901.29	50	89	\$10,961,168.50	\$15,100,885.45
September	27	96	\$3,729,908.56	\$19,833,809.85	44	133	\$13,495,443.00	\$28,596,328.45
October	39	135	\$6,553,741.92	\$26,387,551.77	30	163	\$4,306,251.98	\$32,902,580.43
November	24	159	\$3,306,500.92	\$29,694,052.69	16	179	\$3,117,236.86	\$36,019,817.29
December	18	177	\$2,790,458.11	\$32,484,510.80	29	208	\$2,366,159.91	\$38,385,977.20
January	36	213	\$4,699,661.52	\$37,184,172.32	30	238	\$3,780,011.56	\$42,165,988.76
February	43	256	\$6,131,201.28	\$43,315,373.60	30	268	\$2,076,599.68	\$44,242,588.44
March	36	292	\$6,280,723.57	\$49,596,097.17	29	297	\$4,062,350.95	\$48,304,939.39
April	22	314	\$1,799,922.54	\$51,396,019.71	28	325	\$4,427,811.05	\$52,732,750.44
May	30	344	\$5,597,725.78	\$56,993,745.49	37	362	\$3,839,315.32	\$56,572,065.76
June	50	394	\$19,534,036.04	\$76,527,781.53	34	396	\$12,209,552.37	\$68,781,618.13
<b>Total</b>	<b>394</b>	<b>394</b>	<b>\$76,527,781.53</b>	<b>\$76,527,781.53</b>	<b>396</b>	<b>396</b>	<b>\$68,781,618.13</b>	<b>\$68,781,618.13</b>

Month	FY15				FY16				FY17			
	Number		Amount Awarded		Number		Amount Awarded		Number		Amount Awarded	
	Count	Cum. Ct.	Amount	Cum. Amt.	Count	Cum. Ct.	Amount	Cum. Amt.	Count	Cum. Ct.	Amount	Cum. Amt.
July	56	56	\$9,320,986.14	\$9,320,986.14	37	37	\$8,259,292.12	\$8,259,292.12	36	36	\$4,008,618.27	\$4,008,618.27
August	44	100	\$12,358,916.05	\$21,679,902.19	50	87	\$11,559,380.86	\$19,818,672.98	53	89	\$8,235,000.58	\$12,243,618.85
September	54	154	\$9,752,946.59	\$31,432,848.78	47	134	\$15,419,750.42	\$35,238,423.40	32	121	\$4,388,368.24	\$16,631,987.09
October	40	194	\$10,524,688.48	\$41,957,537.26	29	163	\$5,505,924.11	\$40,744,347.51	44	165	\$10,495,024.28	\$27,127,011.37
November	33	227	\$4,659,283.60	\$46,616,820.86	20	183	\$1,782,290.00	\$42,526,637.51	29	194	\$1,964,267.24	\$29,091,278.61
December	23	250	\$4,928,269.75	\$51,545,090.61	23	206	\$5,157,323.68	\$47,683,961.19	21	215	\$2,559,332.00	\$31,650,610.61
January	22	272	\$2,793,419.35	\$54,338,509.96	18	224	\$2,301,715.00	\$49,985,676.19	28	243	\$4,267,124.83	\$35,917,735.44
February	32	304	\$3,760,154.75	\$58,098,664.71	36	260	\$7,503,614.82	\$57,489,291.01	33	276	\$5,870,893.21	\$41,788,628.65
March	26	330	\$4,144,522.17	\$62,243,186.88	28	288	\$3,653,643.41	\$61,142,934.42	37	313	\$5,655,240.33	\$47,443,868.98
April	33	363	\$10,761,617.18	\$73,004,804.06	30	318	\$7,850,054.40	\$68,992,988.82	19	332	\$7,231,667.00	\$54,675,535.98
May	33	396	\$5,594,823.50	\$78,599,627.56	38	356	\$8,421,608.95	\$77,414,597.77	32	364	\$3,522,917.01	\$58,198,452.99
June	30	426	\$5,826,873.64	\$84,426,501.20	37	393	\$8,166,192.24	\$85,580,790.01				
<b>Total</b>	<b>426</b>	<b>426</b>	<b>\$84,426,501.20</b>	<b>\$84,426,501.20</b>	<b>393</b>	<b>393</b>	<b>\$85,580,790.01</b>	<b>\$85,580,790.01</b>	<b>364</b>	<b>364</b>	<b>\$58,198,452.99</b>	<b>\$58,198,452.99</b>

Fig 1a. FY17 Cumulative totals of numbers of awards through the Division of Research & Economic Development including awards through URIRF as of May FY17

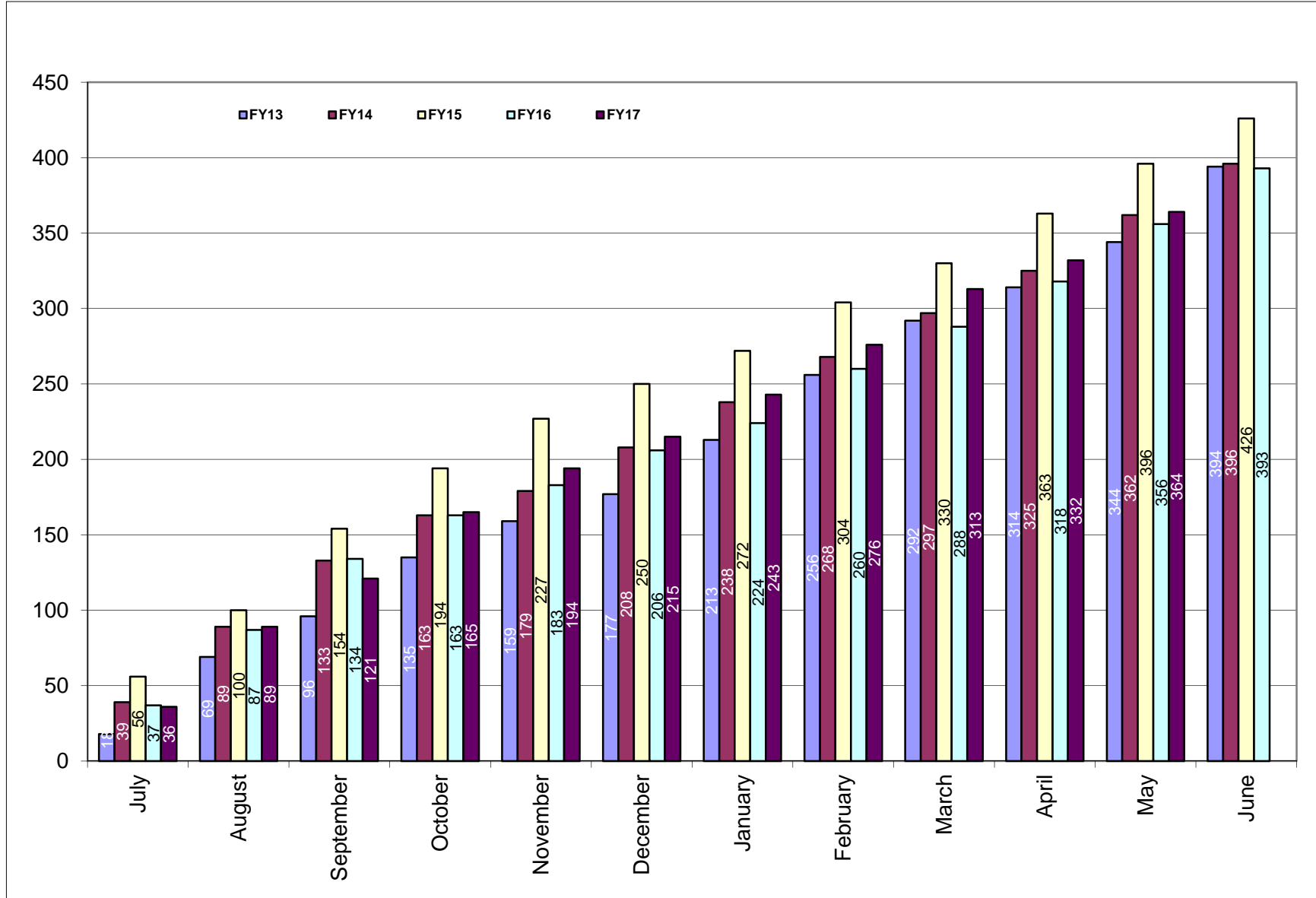
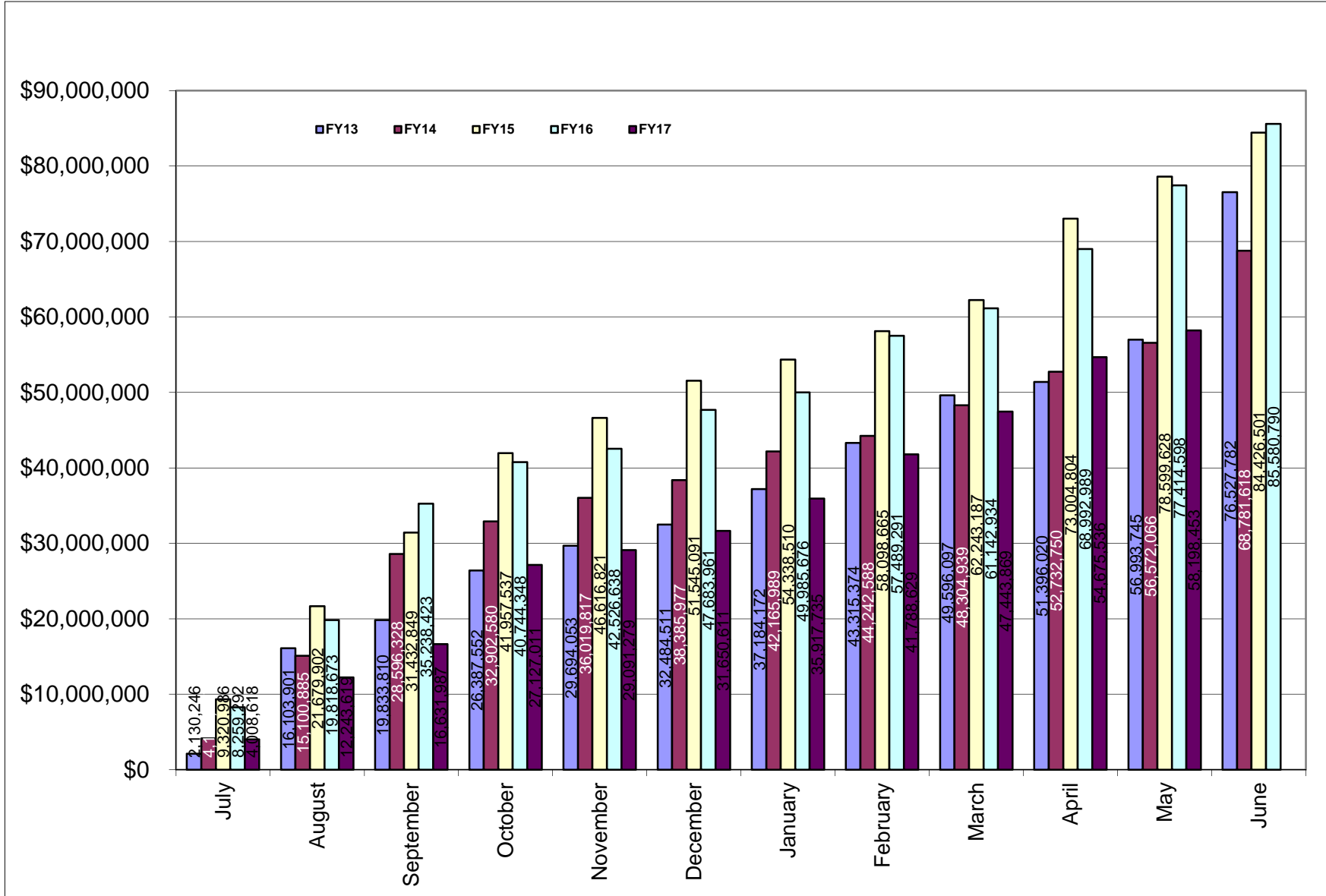


Fig 1b. Cumulative totals of awards received through the Division of Research & Economic Development including awards through URIRF as of May FY17



**Table 2. Summary of awards received by administrative and academic units FY13 through May FY17 YTD**

<b>Administrative</b>	<b><u>FY13</u></b>	<b><u>FY14</u></b>	<b><u>FY15</u></b>	<b><u>FY16</u></b>	<b><u>FY17</u></b>	<b><u>Totals</u></b>
PRESIDENT'S OFFICE	\$0.00	\$0.00	\$0.00	\$0.00	\$0.00	\$0.00
PROVOST	\$11,025.46	\$66,522.90	\$333,665.52	\$347,327.90	\$0.00	\$758,541.78
VP, ADMINISTRATION	\$486,099.64	\$934,258.37	\$12,176.00	\$0.00	\$24,923.00	\$1,457,457.01
VP, RESEARCH & ECON DEV	\$6,000,000.00	\$4,177,835.54	\$5,781,973.31	\$5,019,163.69	\$3,918,871.00	\$24,897,843.54
VP, STUDENT AFFAIRS	\$0.00	\$261,091.70	\$267,287.19	\$124,215.60	\$0.00	\$652,594.49
<b>Academic</b>						
ARTS & SCIENCES	\$6,936,683.83	\$4,245,460.88	\$6,966,881.21	\$5,807,093.79	\$4,706,076.54	\$28,662,196.25
BUSINESS ADMINISTRATION	\$30,264.83	\$72,332.00	\$255,549.40	\$367,079.80	\$0.00	\$725,226.03
COLLEGE OF EDU & PROF STUDIES	\$535,658.00	\$2,077,426.92	\$1,832,419.00	\$2,191,844.01	\$415,936.50	
CONTINUING EDUCATION	\$0.00	\$199,568.70	\$148,136.04	\$118,215.60	NA	\$465,920.34
ENGINEERING	\$5,160,510.74	\$3,487,206.08	\$6,367,872.33	\$8,940,566.89	\$4,266,108.34	\$28,222,264.38
ENVIRONMENT & LIFE SCIENCES	\$17,499,653.71	\$16,144,544.99	\$19,928,754.89	\$16,957,974.00	\$9,633,103.06	\$80,164,030.65
GRADUATE SCHOOL	\$922.00	\$0.00	\$0.00	\$0.00	\$0.00	\$922.00
HUMAN SCIENCE & SERVICES	\$232,908.00	\$899,862.05	\$858,426.62	\$1,147,091.45	NA	\$3,138,288.12
HEALTH SCIENCES	\$4,404,921.65	\$4,771,423.00	\$4,989,606.93	\$4,915,700.32	\$3,569,035.64	\$22,650,687.54
ACADEMIC HEALTH COLLABORATIVE					\$1,408,568.66	\$1,408,568.66
NURSING	\$1,038,977.00	\$1,298,944.60	\$682,403.25	\$1,807,216.30	\$655,277.37	\$5,482,818.52
OCEANOGRAPHY	\$28,261,624.70	\$22,981,661.90	\$25,356,628.31	\$31,099,397.41	\$26,455,414.85	\$134,154,727.17
PHARMACY	\$5,928,531.97	\$6,963,909.80	\$10,644,721.20	\$6,549,687.65	\$2,071,220.35	\$32,158,070.97
UNIVERSITY COLLEGE	\$0.00	\$199,568.70	\$0.00	\$188,215.60	\$0.00	\$387,784.30
UNIVERSITY LIBRARY					\$1,073,917.68	
<b>Totals</b>	<b>\$76,527,781.53</b>	<b>\$68,781,618.13</b>	<b>\$84,426,501.20</b>	<b>\$85,580,790.01</b>	<b>\$58,198,452.99</b>	<b>\$365,387,941.75</b>

NA - NOT APPLICABLE (Unit does not exist)

CANCER PREV RESEARCH CTR - Prior to FY17 was reported in Arts and Sciences

CENTER FOR HUMAN SERVICES - Prior to FY17 was reported in Human Science and Services

EDUCATION - Prior to FY17 was reported in Human Science and Services

HUMAN DEV/COUNSEL/FAM STUDIES - Prior to FY17 was reported in Human Science and Services

NUTRITION AND FOOD SCIENCES - Prior to FY17 was reported in Environment and Life Sciences

PHYSICAL THERAPY - Prior to FY17 was reported in Human Science and Services

PSYCHOLOGY - Prior to FY17 was reported in Arts and Sciences

**Table 2a. Awards received by departments within colleges FY13 through May FY17 YTD**

<u>College</u>	<u>FY13</u>	<u>FY14</u>	<u>FY15</u>	<u>FY16</u>	<u>FY17 YTD</u>	<u>Totals</u>
<b>Arts and Sciences</b>	<b>\$6,936,683.83</b>	<b>\$4,245,460.88</b>	<b>\$6,966,881.21</b>	<b>\$5,807,093.79</b>	<b>\$4,706,076.54</b>	<b>\$28,662,196.25</b>
ARCHEOLOGY AND APPLIED HISTORY	\$34,869.00	\$0.00	\$4,898.00	\$0.00	\$0.00	\$39,767.00
ART	\$0.00	\$0.00	\$0.00	\$0.00	\$0.00	\$0.00
CHEMISTRY	\$3,734,821.70	\$1,860,329.55	\$4,959,626.45	\$3,407,452.84	\$2,279,873.50	\$16,242,104.04
COMMUNICATION STUDIES	\$0.00	\$0.00	\$0.00	\$0.00	\$69,146.00	\$69,146.00
COMPUTER SCIENCE/STATISTICS	\$1,219,627.26	\$159,245.55	\$50,250.00	\$826,544.98	\$491,657.00	\$2,747,324.79
DEAN'S OFFICE	\$0.00	\$22,302.98	\$23,478.36	\$24,924.04	\$0.00	\$70,705.38
ECONOMICS	\$0.00	\$0.00	\$6,250.00	\$0.00	\$0.00	\$6,250.00
ENGLISH			\$475,980.00	\$0.00	\$25,000.00	\$500,980.00
FEINSTEIN HUNGER CTR(DEAN'S OFFICE)	\$850,654.00	\$797,488.00	\$555,216.00	\$570,233.00	\$555,216.00	\$3,328,807.00
HISTORY	\$145,150.00	\$248,515.00	\$60,480.00	\$1,982.00	\$211,921.00	\$668,048.00
INTERNATIONAL ENGINEERING PROG	\$0.00	\$0.00	\$0.00	\$0.00	\$0.00	\$0.00
LANGUAGES	\$249,610.00	\$419,870.00	\$377,995.80	\$15,000.00	\$761,273.04	\$1,823,748.84
LIBRARY AND INFORMATION STUDIES	\$0.00	\$50,000.00	\$0.00	\$0.00	\$0.00	\$50,000.00
MATHEMATICS	\$245,849.87	\$108,832.55	\$0.00	\$0.00	\$0.00	\$354,682.42
PHILOSOPHY					\$2,000.00	\$2,000.00
PHYSICS	\$403,189.00	\$504,034.50	\$219,162.00	\$237,748.00	\$217,875.00	\$1,582,008.50
POLITICAL SCIENCE			\$162,083.60	\$517,787.30	\$31,502.00	\$711,372.90
SOCIOLOGY/ANTHROPOLOGY	\$8,491.00	\$30,118.75	\$0.00	\$110,426.00	\$50,613.00	\$199,648.75
THEATRE	\$0.00	\$0.00	\$0.00	\$0.00	\$0.00	\$0.00
GENDER AND WOMEN'S STUDIES	\$0.00	\$0.00	\$0.00	\$0.00	\$0.00	\$0.00
WRITING AND RHETORIC	\$44,422.00	\$44,724.00	\$71,461.00	\$94,995.63	\$10,000.00	\$265,602.63
<b>Business Administration</b>	<b>\$30,264.83</b>	<b>\$72,332.00</b>	<b>\$255,549.40</b>	<b>\$367,079.80</b>	<b>\$0.00</b>	<b>\$725,226.03</b>
ACCOUNTING	\$0.00	\$0.00	\$0.00	\$0.00	\$0.00	\$0.00
DEAN'S OFFICE	\$0.00	\$0.00	\$234,712.00	\$331,719.40	\$0.00	\$566,431.40
FACULTY - INSTRUCTION	\$30,264.83	\$72,332.00	\$20,837.40	\$35,360.40	\$0.00	\$158,794.63
MANAGEMENT	\$0.00	\$0.00	\$0.00	\$0.00	\$0.00	\$0.00

<u>College</u>	<u>FY13</u>	<u>FY14</u>	<u>FY15</u>	<u>FY16</u>	<u>FY17 YTD</u>	<u>Totals</u>
<b>College of Education &amp; Prof. Studies</b>	<b>\$535,658.00</b>	<b>\$2,077,426.92</b>	<b>\$1,832,419.00</b>	<b>\$2,191,844.01</b>	<b>\$415,936.50</b>	<b>\$7,053,284.43</b>
CENTER FOR HUMAN SERVICES	\$0.00	\$524,558.00	\$237,256.00	\$237,256.00	\$237,256.00	\$1,236,326.00
EDUCATION	\$535,658.00	\$1,552,868.92	\$1,595,163.00	\$1,954,588.01	\$178,680.50	\$5,816,958.43
<hr/>						
<b>Engineering</b>	<b>\$5,160,510.74</b>	<b>\$3,487,206.08</b>	<b>\$6,367,872.33</b>	<b>\$8,940,566.89</b>	<b>\$4,266,108.34</b>	<b>\$28,222,264.38</b>
CHEMICAL ENGINEERING	\$630,281.44	\$1,017,782.78	\$1,147,777.99	\$638,045.12	\$457,769.37	\$3,891,656.70
CIVIL/ENVIRONMENTAL ENGINEERING	\$710,021.53	\$679,694.60	\$358,795.80	\$626,548.76	\$475,926.05	\$2,850,986.74
DEAN'S OFFICE	\$0.00	\$107,273.00	\$65,999.00	\$319,912.80	\$64,876.00	\$558,060.80
ELECTRICAL ENGINEERING	\$1,751,239.87	\$221,001.00	\$2,903,823.72	\$3,390,875.31	\$684,403.59	\$8,951,343.49
ENGINEERING COMPUTER CTR		\$42,572.00	\$0.00	\$0.00	\$0.00	\$42,572.00
INTERNATIOANAL ENG PROGRAM			\$17,692.80	\$15,000.00	\$25,000.00	\$57,692.80
MECHANICAL & INDUSTRIAL SYS EGR	\$1,442,279.23	\$350,143.00	\$586,746.91	\$1,993,862.41	\$1,103,170.00	\$5,476,201.55
OCEAN ENGINEERING	\$626,688.67	\$1,068,739.70	\$1,287,036.11	\$1,956,322.49	\$1,454,963.33	\$6,393,750.30
<hr/>						
<b>Environment and Life Sciences</b>	<b>\$17,499,653.71</b>	<b>\$16,144,544.99</b>	<b>\$19,928,754.89</b>	<b>\$16,957,974.00</b>	<b>\$9,633,103.06</b>	<b>\$80,164,030.65</b>
BIOLOGICAL SCIENCES	\$1,999,526.20	\$1,205,548.39	\$409,221.00	\$253,638.00	\$0.00	\$3,867,933.59
CELL AND MOLECULAR BIOLOGY	\$5,851,712.00	\$7,148,772.86	\$430,581.00	\$0.00	\$60,697.00	\$13,491,762.86
CELLS ACADEMIC UNIT 1			\$2,817,060.20	\$4,150,538.11	\$2,464,866.61	\$9,432,464.92
CELLS ACADEMIC UNIT 2			\$3,661,919.60	\$4,189,228.41	\$2,787,667.29	\$10,638,815.30
CELLS ACADEMIC UNIT 3		\$8,000.00	\$5,610,346.18	\$5,712,508.68	\$2,473,149.24	\$13,804,004.10
COMMUNITY PLANNING/AREA DEVEL	\$78,020.84	\$0.00	\$0.00	\$0.00	\$0.00	\$78,020.84
COOPERATIVE EXTENSION	\$1,007,000.18	\$303,615.00	\$117,786.70	\$8,250.00	\$0.00	\$1,436,651.88
DEAN'S OFFICE	\$3,088,215.00	\$1,671,668.43	\$802,988.20	\$1,639,130.50	\$1,671,936.00	\$8,873,938.13
ENV & NAT RESOURCE ECONOMICS	\$127,166.00	\$780,131.00	\$570,754.00	\$335,567.20	\$0.00	\$1,813,618.20
FISHERIES, ANIMAL & VET SCIENCE	\$1,450,456.60	\$958,878.97	\$569,213.69	\$176,211.10	\$83,288.92	\$3,238,049.28
GEOSCIENCES	\$1,314,837.49	\$566,452.87	\$1,116,544.24	\$113,544.00	\$88,898.00	\$3,200,276.60
MARINE AFFAIRS	\$123,508.00	\$3,837.00	\$0.00	\$0.00	\$0.00	\$127,345.00
NATURAL RESOURCES SCIENCE	\$1,459,896.00	\$3,014,274.22	\$3,753,730.08	\$354,263.00	\$2,600.00	\$8,584,763.30
PLANT SCIENCE	\$999,315.40	\$483,366.25	\$68,610.00	\$25,095.00	\$0.00	\$1,576,386.65



<u>College</u>	<u>FY13</u>	<u>FY14</u>	<u>FY15</u>	<u>FY16</u>	<u>FY17 YTD</u>	<u>Totals</u>
<b>Graduate School</b>	<b>\$922.00</b>	<b>\$0.00</b>	<b>\$0.00</b>	<b>\$0.00</b>	<b>\$0.00</b>	<b>\$922.00</b>
<b>Human Science and Services</b>	<b>\$232,908.00</b>	<b>\$899,862.05</b>	<b>\$858,426.62</b>	<b>\$1,142,091.45</b>	<b>NA*</b>	<b>\$3,133,288.12</b>
COMMUNICATIVE DISORDERS	\$0.00	\$0.00	\$0.00	\$24,250.00		\$24,250.00
DEAN'S OFFICE	\$232,908.00	\$588,623.00	\$319,709.00	\$0.00		\$1,141,240.00
GERONTOLOGY	\$0.00	\$267,077.10	\$537,787.40	\$1,100,341.45		\$1,905,205.95
KINGSTON CHILD DEVELOPMENT CTR		\$7,162.95	\$930.22	\$0.00		\$8,093.17
TEXTILES/FASHION MERCHAND/DESIGN	\$0.00	\$36,999.00	\$0.00	\$17,500.00		\$54,499.00
<b>College of Health Sciences</b>	<b>\$4,404,921.65</b>	<b>\$4,771,423.00</b>	<b>\$4,989,606.93</b>	<b>\$4,920,700.32</b>	<b>\$3,569,035.64</b>	<b>\$22,655,687.54</b>
CANCER PREV RESEARCH CTR	\$3,209,160.65	\$1,236,062.50	\$2,284,271.90	\$3,030,564.52	\$1,316,425.64	\$11,076,485.21
HUMAN DEV/COUNSEL/FAM STUDIES	\$92,068.00	\$116,886.00	\$109,355.00	\$226,093.95	\$74,950.00	\$619,352.95
KINESIOLOGY	\$0.00	\$0.00	\$0.00	\$5,000.00	\$3,000.00	\$8,000.00
NUTRITION AND FOOD SCIENCES	\$1,031,710.00	\$2,847,405.50	\$2,132,969.00	\$334,417.00	\$1,424,611.00	\$7,771,112.50
PHYSICAL THERAPY	\$0.00	\$341,442.00	\$87,892.00	\$840,254.65	\$497,888.00	\$1,767,476.65
PSYCHOLOGY	\$71,983.00	\$229,627.00	\$375,119.03	\$484,370.20	\$252,161.00	\$1,413,260.23
<b>ACADEMIC HEALTH COLLABORATIVE</b>					<b>\$1,408,568.66</b>	<b>\$1,408,568.66</b>
IIHI ADMINISTRATION					\$1,408,568.66	\$1,408,568.66
<b>Nursing</b>	<b>\$1,038,977.00</b>	<b>\$1,298,944.60</b>	<b>\$682,403.25</b>	<b>\$1,807,216.30</b>	<b>\$655,277.37</b>	<b>\$5,482,818.52</b>
<b>Oceanography</b>	<b>\$28,261,624.70</b>	<b>\$22,981,661.90</b>	<b>\$25,356,628.31</b>	<b>\$31,099,397.41</b>	<b>\$26,455,414.85</b>	<b>\$134,154,727.17</b>

<b>Pharmacy</b>	<b>\$5,928,531.97</b>	<b>\$6,963,909.80</b>	<b>\$10,644,721.20</b>	<b>\$6,549,687.65</b>	<b>\$2,071,220.35</b>	<b>\$32,158,070.97</b>
BIOMEDICAL & PHARMACEUTICAL SCI	\$5,029,978.72	\$5,544,086.00	\$6,272,151.75	\$5,773,671.13	\$1,606,903.10	\$24,226,790.70
CRIME LAB	\$27,172.25	\$33,092.00	\$30,770.75	\$14,333.75	\$31,094.25	\$136,463.00
DEAN'S OFFICE	\$0.00	\$0.00	\$0.00	\$0.00	\$0.00	\$0.00
ELDERLY MEDICATION	\$0.00	\$0.00	\$0.00	\$0.00	\$0.00	\$0.00
LIVING RITE/HEALTH POLICY	\$0.00	\$811,359.00	\$2,988,425.40	\$0.00	\$0.00	\$3,799,784.40
PHARMACY PRACTICE	\$871,381.00	\$575,372.80	\$1,353,373.30	\$761,682.77	\$433,223.00	\$3,995,032.87

<u>College</u>	<u>FY13</u>	<u>FY14</u>	<u>FY15</u>	<u>FY16</u>	<u>FY17 YTD</u>	<u>Totals</u>
<b>University College</b>	<b>\$0.00</b>	<b>\$199,568.70</b>	<b>\$0.00</b>	<b>\$188,215.60</b>	<b>\$0.00</b>	<b>\$387,784.30</b>

<u>College</u>	<u>FY13</u>	<u>FY14</u>	<u>FY15</u>	<u>FY16</u>	<u>FY17 YTD</u>	<u>Totals</u>
<b>University Library</b>	<b>\$0.00</b>	<b>\$0.00</b>	<b>\$0.00</b>	<b>\$0.00</b>	<b>\$1,073,917.68</b>	<b>\$1,073,917.68</b>
DATASPARK					\$1,073,917.68	\$1,073,917.68

NA - NOT APPLICABLE (Unit does not exist)

CANCER PREV RESEARCH CTR - Prior to FY17 was reported in Arts and Sciences

CENTER FOR HUMAN SERVICES - Prior to FY17 was reported in Human Science and Services

EDUCATION - Prior to FY17 was reported in Human Science and Services

HUMAN DEV/COUNSEL/FAM STUDIES - Prior to FY17 was reported in Human Science and Services

NUTRITION AND FOOD SCIENCES - Prior to FY17 was reported in Environment and Life Sciences

PHYSICAL THERAPY - Prior to FY17 was reported in Human Science and Services

PSYCHOLOGY - Prior to FY17 was reported in Arts and Sciences

**Table 2b. Awards received by units within administrative divisions FY13 through May FY17 YTD**

<u>Administrative Unit</u>	<u>FY13</u>	<u>FY14</u>	<u>FY15</u>	<u>FY16 YTD</u>	<u>FY17 YTD</u>	<u>Totals</u>
<b>President's Office</b>	<b>\$0.00</b>	<b>\$0.00</b>	<b>\$0.00</b>	<b>\$0.00</b>	<b>\$0.00</b>	<b>\$0.00</b>
<b>Provost</b>	<b>\$11,025.46</b>	<b>\$66,522.90</b>	<b>\$333,665.52</b>	<b>\$347,327.90</b>	<b>\$0.00</b>	<b>\$758,541.78</b>
ADVANCE OFFICE	\$0.00	\$0.00	\$0.00	\$0.00	\$0.00	\$0.00
LABOR RESEARCH CENTER	\$11,025.46	\$0.00	\$143,874.60	\$243,922.70	\$0.00	\$398,822.76
NETWORK AND TELECOM SERVICES	\$0.00	\$0.00	\$0.00	\$0.00	\$0.00	\$0.00
PROVOST	\$0.00	\$66,522.90	\$189,790.92	\$103,405.20	\$0.00	\$359,719.02
<b>VP, Administration</b>	<b>\$486,099.64</b>	<b>\$934,258.37</b>	<b>\$12,176.00</b>	<b>\$0.00</b>	<b>\$24,923.00</b>	<b>\$24,124.00</b>
POLICE					\$24,923.00	\$24,923.00
TRANSPORTATION CENTER	\$474,151.64	\$934,258.37	NA	NA	NA	\$1,408,410.01
VICE PRESIDENT FOR ADMINISTRATION	\$11,948.00	\$0.00	\$12,176.00	\$0.00	\$0.00	\$24,124.00
<b>VP, Research &amp; Economic Development</b>	<b>\$6,000,000.00</b>	<b>\$4,177,835.54</b>	<b>\$5,781,973.31</b>	<b>\$5,019,163.69</b>	<b>\$3,918,871.00</b>	<b>\$13,496,681.54</b>
SMALL BUSINESS DEVELOPMENT CTR		\$172,400.00	\$1,090,101.00	\$650,000.00	\$0.00	\$1,912,501.00
VICE PRESIDENT FOR RESEARCH		\$4,005,435.54	\$4,011,596.00	\$0.00	\$1,650,626.00	\$9,667,657.54
TRANSPORTATION CENTER			\$680,276.31	\$1,044,239.69	\$192,007.00	\$1,916,523.00
URI RESEARCH FOUNDATION				\$3,324,924.00	\$2,076,238.00	\$5,401,162.00
<b>VP, Student Affairs</b>	<b>\$0.00</b>	<b>\$261,091.70</b>	<b>\$267,287.19</b>	<b>\$124,215.60</b>	<b>\$0.00</b>	<b>\$652,594.49</b>
STUDENT LIFE	\$0.00	\$61,523.00	\$0.00	\$0.00	\$0.00	\$61,523.00
TALENT DEVELOPMENT	\$0.00	\$199,568.70	\$142,343.19	\$118,215.60	\$0.00	\$460,127.49
VICE PRESIDENT STUDENT AFFAIRS			\$124,944.00	\$0.00	\$0.00	\$124,944.00
WOMENS CENTER				\$6,000.00	\$0.00	\$6,000.00

NA - Not Applicable (unit did not exist or was in another division)

# DIVISION OF RESEARCH AND ECONOMIC DEVELOPMENT

## Awards for College of Arts & Sciences

From: 7/1/2016 To: 5/31/2017

Investigator Award Total: \$4,706,076.54

### Chemistry

**Total: \$2,279,873.50**

AWARD DATE	AWARD ID	SPONSOR	INVESTIGATOR	ROLE	AWARD AMT	CREDIT	PORTION AMT	TITLE	BEGIN DATE	END DATE
8/30/2016	AWD05040	National Science Foundation	Deboef,Brenton	AWPI	150000	100	\$150,000.00	New Oxidative C-H Functionalization Reactions	9/1/2016	8/31/2019
9/5/2016	AWD05040	National Science Foundation	Deboef,Brenton	AWPI	210000	100	\$210,000.00	New Oxidative C-H Functionalization Reactions	9/1/2016	8/31/2019
12/22/2016	AWD03286	Brown University	Euler,William B	WCPI	686398	25	\$171,599.50	Fundamental Investigations of Damage Mechanisms	9/15/2011	9/14/2017
3/16/2017	AWD04938	National Science Foundation	Kiesewetter,Matthew	AWPI	413243	100	\$413,243.00	CAREER: Stereoselective and Rate-Enhanced H Bonding Catalysts in Ring-Opening Polymerization	3/15/2016	2/28/2021
8/4/2016	AWD05329	ADOX Technologies - Intl. Dioxide, Inc	Levine,Mindy	WCPI	7018	50	\$3,509.00	NMR Study of ClO <sub>2</sub> / Alpha-Cyclodextrin Complexation	5/31/2016	6/30/2016
3/1/2017	AWD05741	International Dioxide, Inc.	Levine,Mindy	AWPI	80000	50	\$40,000.00	Cyclodextrin-Based Complexation of Small Molecules for Improved Toxicant Degradation and Water Purification Efforts	2/1/2017	12/31/2017
12/22/2016	AWD03286	Brown University	Lucht,Brett L	AWPI	686398	50	\$343,199.00	Fundamental Investigations of Damage Mechanisms	9/15/2011	9/14/2017
10/21/2016	AWD04479	National Science Foundation	Oxley,Jimmie	WCPI	4950	40	\$1,980.00	A Low-Cost Velocimetry for Ultra-Fast Shock Wave Measurement	6/1/2015	5/31/2018
1/30/2017	AWD05238	Government of Israel - Ministry of Defen	Oxley,Jimmie	AWPI	200000	50	\$100,000.00	Structural Studies by XRD of Energetic Material Using Synchrotron Radiation	11/1/2016	9/1/2017
8/4/2016	AWD03809	Northeastern University	Oxley,Jimmie C	AWPI	470000	100	\$470,000.00	AWARENESS AND LOCALIZATION OF EXPLOSIVES-RELATED THREATS (ALERT)	8/25/2013	6/30/2017
8/25/2016	AWD03809	Northeastern University	Oxley,Jimmie C	AWPI	75000	100	\$75,000.00	AWARENESS AND LOCALIZATION OF EXPLOSIVES-RELATED THREATS (ALERT)	8/25/2013	6/30/2017

## DIVISION OF RESEARCH AND ECONOMIC DEVELOPMENT

AWARD DATE	AWARD ID	SPONSOR	INVESTIGATOR	ROLE	AWARD AMT	CREDIT	PORTION AMT	TITLE	BEGIN DATE	END DATE
11/7/2016	AWD03809	Northeastern University	Oxley, Jimmie C	AWPI	7847	100	\$7,847.00	AWARENESS AND LOCALIZATION OF EXPLOSIVES-RELATED THREATS (ALERT)	8/25/2013	6/30/2017
11/25/2016	AWD04284	DEFENSE THREAT REDUCTION AGENCY	Oxley, Jimmie C	AWPI	174496	50	\$87,248.00	Unique Polymer Packaging and Delivery of ADW	5/19/2014	5/18/2017
4/11/2017	AWD03809	Northeastern University	Oxley, Jimmie C	AWPI	19000	100	\$19,000.00	AWARENESS AND LOCALIZATION OF EXPLOSIVES-RELATED THREATS (ALERT)	8/25/2013	6/30/2017
1/30/2017	AWD05238	Government of Israel - Ministry of Defen	Smith, James	WCPI	200000	50	\$100,000.00	Structural Studies by XRD of Energetic Material Using Synchrotron Radiation	11/1/2016	9/1/2017
11/25/2016	AWD04284	DEFENSE THREAT REDUCTION AGENCY	Smith, James L	WCPI	174496	50	\$87,248.00	Unique Polymer Packaging and Delivery of ADW	5/19/2014	5/18/2017

### Communication Studies

**Total: \$69,146.00**

AWARD DATE	AWARD ID	SPONSOR	INVESTIGATOR	ROLE	AWARD AMT	CREDIT	PORTION AMT	TITLE	BEGIN DATE	END DATE
10/21/2016	AWD05464	US Dept of Interior	Smith, Hollie M	WCPI	314300	22	\$69,146.00	CI - Identifying Indicators of Offshore Wind Benefits: An Analysis of the Effects of the Block Island Wind Farm on Rhode Island Recreation and Tourism Activities	9/21/2016	12/31/2018

### Computer Science

**Total: \$491,657.00**

AWARD DATE	AWARD ID	SPONSOR	INVESTIGATOR	ROLE	AWARD AMT	CREDIT	PORTION AMT	TITLE	BEGIN DATE	END DATE
10/12/2016	AWD05316	U. S. DEPARTMENT OF JUSTICE	Alvarez Vega, Marco A	AWPI	396686	100	\$396,686.00	Deep Patrol: Finding Illicit Videos for Law Enforcement	1/1/2017	12/31/2018
5/2/2017	AWD05609	University of Vermont	Brown, David A	WCPI	14925	10	\$1,492.50	Testing Laser Scarecrows for Neighbor-Friendly Bird Damage Reduction in Sweet Corn on Peri-Urban Farms	2/20/2017	4/15/2018

## DIVISION OF RESEARCH AND ECONOMIC DEVELOPMENT

AWARD DATE	AWARD ID	SPONSOR	INVESTIGATOR	ROLE	AWARD AMT	CREDIT	PORTION AMT	TITLE	BEGIN DATE	END DATE
8/29/2016	AWD03752	National Science Foundation	Fay-Wolfe, Victor	WCPI	186957	50	\$93,478.50	URI Robert Noyce teacher scholarship program	10/1/2013	3/31/2019

### English

**Total: \$25,000.00**

AWARD DATE	AWARD ID	SPONSOR	INVESTIGATOR	ROLE	AWARD AMT	CREDIT	PORTION AMT	TITLE	BEGIN DATE	END DATE
8/19/2016	AWD05247	NATIONAL ENDOWMENT FOR THE HUMANITIES	Davis, Kathleen	AWPI	25000	100	\$25,000.00	Humanities at Large	9/1/2016	8/31/2017

### Feinstein Hunger Center

**Total: \$555,216.00**

AWARD DATE	AWARD ID	SPONSOR	INVESTIGATOR	ROLE	AWARD AMT	CREDIT	PORTION AMT	TITLE	BEGIN DATE	END DATE
1/10/2017	AWD05494	RI Dept of Human Services	Gorman, Kathleen	AWPI	555216	100	\$555,216.00	SNAP Outreach Project 2017	10/1/2016	9/30/2017

### History

**Total: \$211,921.00**

AWARD DATE	AWARD ID	SPONSOR	INVESTIGATOR	ROLE	AWARD AMT	CREDIT	PORTION AMT	TITLE	BEGIN DATE	END DATE
11/29/2016	AWD05703	RI Historical Preservation & Heritage Co	Mather, Ian	AWPI	211921	100	\$211,921.00	CI - The Rhode Island Historical and Archaeological Geographic Information System	9/30/2016	3/31/2018

## DIVISION OF RESEARCH AND ECONOMIC DEVELOPMENT

### Languages

**Total: \$761,273.04**

AWARD DATE	AWARD ID	SPONSOR	INVESTIGATOR	ROLE	AWARD AMT	CREDIT	PORTION AMT	TITLE	BEGIN DATE	END DATE
8/1/2016	AWD05766	Institute for International Education	He,Wayne Wenchao	AWPI	196024	100	\$196,024.00	Supplement to Chinese Undergraduate Flagship Program	4/1/2016	5/31/2017
8/24/2016	AWD05196	Institute for International Education	He,Wayne Wenchao	AWPI	329575.04	100	\$329,575.04	Chinese Flagship 2016-2020	4/1/2016	5/31/2018
5/3/2017	AWD05961	Institute for International Education	He,Wayne Wenchao	AWPI	192500	100	\$192,500.00	Chinese Flagship Student Support Program 2017-2018	4/1/2017	5/31/2018
10/7/2016	AWD05461	US Department of Education	Magidow,Alexander	AWPI	43174	100	\$43,174.00	Building Towards an International Business Program in Arabic at URI	10/1/2016	9/30/2017

### Philosophy

**Total: \$2,000.00**

AWARD DATE	AWARD ID	SPONSOR	INVESTIGATOR	ROLE	AWARD AMT	CREDIT	PORTION AMT	TITLE	BEGIN DATE	END DATE
4/3/2017	AWD05800	Rhode Island Council for the Humanities	Johnson,Galen	AWPI	2000	100	\$2,000.00	Phenomenology and the Arts Today	3/17/2017	4/28/2017

### Physics

**Total: \$217,875.00**

AWARD DATE	AWARD ID	SPONSOR	INVESTIGATOR	ROLE	AWARD AMT	CREDIT	PORTION AMT	TITLE	BEGIN DATE	END DATE
2/22/2017	AWD04732	Yale University	Andreev,Oleg	AWPI	217875	50	\$108,937.50	Mechanism and Uses of Transmembrane Helix Insertion by Soluble Peptides	1/1/2017	12/31/2017
2/22/2017	AWD04732	Yale University	Reshetnyak,Yana	WCPI	217875	50	\$108,937.50	Mechanism and Uses of Transmembrane Helix Insertion by Soluble Peptides	1/1/2017	12/31/2017

## DIVISION OF RESEARCH AND ECONOMIC DEVELOPMENT

### Political Science

**Total: \$31,502.00**

AWARD DATE	AWARD ID	SPONSOR	INVESTIGATOR	ROLE	AWARD AMT	CREDIT	PORTION AMT	TITLE	BEGIN DATE	END DATE
10/12/2016	AWD04617	University of Illinois	Pearson-Merkowitz,Shanna	AWPI	31502	100	\$31,502.00	State Level Immigration Policy, 1990-2016	7/1/2016	6/30/2017

### Sociology & Anthropology

**Total: \$50,613.00**

AWARD DATE	AWARD ID	SPONSOR	INVESTIGATOR	ROLE	AWARD AMT	CREDIT	PORTION AMT	TITLE	BEGIN DATE	END DATE
1/30/2017	AWD03465	National Science Foundation	Bovy,Kristine M	AWPI	12434	100	\$12,434.00	CI-Collaborative Research:Impacts of abrupt environmental change on North Pacific Human Ecosystem Dynamics using high resolution zooarchaeological records from coastal Washington	8/15/2012	1/31/2018
10/20/2016	AWD05377	University of Puerto Rico	Garcia-Quijano,Carlos	AWPI	38179	70	\$26,725.30	CI - Coastal Forest Fisheries: A Study of Estuarine Forest Resource Dependency in the Southern Coast of Puerto Rico	2/1/2016	1/31/2018
10/20/2016	AWD05377	University of Puerto Rico	Poggie,Jonathan	WCPI	38179	30	\$11,453.70	CI - Coastal Forest Fisheries: A Study of Estuarine Forest Resource Dependency in the Southern Coast of Puerto Rico	2/1/2016	1/31/2018

### Writing & Rhetoric

**Total: \$10,000.00**

AWARD DATE	AWARD ID	SPONSOR	INVESTIGATOR	ROLE	AWARD AMT	CREDIT	PORTION AMT	TITLE	BEGIN DATE	END DATE
1/31/2017	AWD05543	National Council of Teachers of English	Madden,Shannon	AWPI	10000	100	\$10,000.00	Toward Data-Driven Support for Graduate and Faculty Writers: Two Inter-Informative Studies	2/1/2017	1/31/2019



## DIVISION OF RESEARCH AND ECONOMIC DEVELOPMENT

### Awards for College of Education and Professional Studies

From 7/1/2016 To: 5/31/2017

Investigator Award Total: \$415,936.50

#### Center for Human Services

**Total: \$237,256.00**

AWARD DATE	AWARD ID	SPONSOR	INVESTIGATOR	ROLE	AWARD AMT	CREDIT	PORTION AMT	TITLE	BEGIN DATE	END DATE
8/26/2016	AWD05344	RI Dept of Human Services	Mathews,Deborah	AWPI	131369	100	\$131,369.00	RI DHS Training and Consultation	7/1/2016	6/30/2017
8/26/2016	AWD05974	RI Dept of Human Services	Mathews,Deborah	AWPI	16632	100	\$16,632.00	RIDHS Training Medicaid Portion	7/1/2016	6/30/2017
8/26/2016	AWD05973	RI Dept of Human Services	Mathews,Deborah	AWPI	40143	100	\$40,143.00	RI DHS Training TANF Portion	7/1/2016	6/30/2017
8/26/2016	AWD05972	RI Dept of Human Services	Mathews,Deborah	AWPI	49112	100	\$49,112.00	SNAP Portion	7/1/2016	6/30/2017

#### School of Education

**Total: \$178,680.50**

AWARD DATE	AWARD ID	SPONSOR	INVESTIGATOR	ROLE	AWARD AMT	CREDIT	PORTION AMT	TITLE	BEGIN DATE	END DATE
9/6/2016	AWD05536	Jumpstart for Young Children, Inc.	Brand,Susan	OTH	85202	50	\$42,601.00	Jumpstart 17	9/1/2016	8/31/2017
9/6/2016	AWD05536	Jumpstart for Young Children, Inc.	Byrd,David M	AWPI	85202	50	\$42,601.00	Jumpstart 17	9/1/2016	8/31/2017
8/29/2016	AWD03752	National Science Foundation	Seitsinger,Anne	AWPI	186957	50	\$93,478.50	URI Robert Noyce teacher scholarship program	10/1/2013	3/31/2019

## DIVISION OF RESEARCH AND ECONOMIC DEVELOPMENT

### Awards for College of Engineering

From: 7/1/2016 To: 5/31/2017

Investigator Award Total: \$4,266,108.34

#### Chemical Engineering

**Total: \$457,769.37**

AWARD DATE	AWARD ID	SPONSOR	INVESTIGATOR	ROLE	AWARD AMT	CREDIT	PORTION AMT	TITLE	BEGIN DATE	END DATE
12/22/2016	AWD03286	Brown University	Bose,Arijit	WCPI	686398	25	\$171,599.50	Fundamental Investigations of Damage Mechanisms	9/15/2011	9/14/2017
8/9/2016	AWD05073	National Science Foundation	Bothun,Geoffrey	WCPI	324765	25	\$81,191.25	Remotely Activated Biomaterial Scaffolds for Flexibly Directig the Recruitment and Differentiation of Bone Progenitor Cells	8/1/2016	7/31/2019
8/25/2016	AWD04741	University of Maryland	Bothun,Geoffrey	AWPI	16285	100	\$16,285.00	Molecular Engineering of Food-Grade Dispersants as Highly Efficient and Safe Products for the Treatment of Oil Spills	1/1/2016	12/31/2016
12/5/2016	AWD04741	University of Maryland	Bothun,Geoffrey	AWPI	16285	100	\$16,285.00	Molecular Engineering of Food-Grade Dispersants as Highly Efficient and Safe Products for the Treatment of Oil Spills	1/1/2016	12/31/2016
1/31/2017	AWD04741	University of Maryland	Bothun,Geoffrey	AWPI	28178	100	\$28,178.00	Molecular Engineering of Food-Grade Dispersants as Highly Efficient and Safe Products for the Treatment of Oil Spills	1/1/2016	12/31/2017
8/5/2016	AWD05178	RI Commerce Corporation	Gregory,Otto	WCPI	49921.25	50	\$24,960.62	RFID Tags for Traceability, Counterfeiting and Inventory Control	8/9/2016	6/1/2017
10/1/2016	AWD05582	URI Research Foundation	Gregory,Otto	AWPI	29289	100	\$29,289.00	High Resolution, Thin Film Thermocouples Utilizing CMC as a Thermocouple Leg	8/25/2016	8/25/2017
11/23/2016	AWD05477	National Science Foundation	Lucia,Angelo	AWPI	50000	100	\$50,000.00	I-CORPS: Energy Efficient Process Design Alternatives	12/1/2016	5/31/2017
8/30/2016	AWD05356	Alternatives Research & Development Fou	Meenach,Samantha	AWPI	39981	100	\$39,981.00	Development of a Comprehensive in Vitro Air-Grown Lung Cancer Pre-Clinical Assay Platform	8/1/2016	7/31/2017

#### Civil and Environmental Engine

**Total: \$475,926.05**

## DIVISION OF RESEARCH AND ECONOMIC DEVELOPMENT

AWARD DATE	AWARD ID	SPONSOR	INVESTIGATOR	ROLE	AWARD AMT	CREDIT	PORTION AMT	TITLE	BEGIN DATE	END DATE
9/22/2016	AWD05504	International Centre for Diarrhoeal Dise	Akanda,Ali	AWPI	79910	100	\$79,910.00	Control of Endemic Cholera in Bangladesh	9/21/2016	8/31/2019
3/1/2017	AWD05825	The Woodard & Curran Foundation	Akanda,Ali	WCPI	33333	50	\$16,666.50	Designing Sustainable Water Systems for Climate Change: A Case Study in Rural Dominican Republic	11/1/2016	10/30/2019
5/25/2017	AWD04254	West Virginia University	Akanda,Ali	AWPI	16814	100	\$16,814.00	A Multi-Sensor Remote Sensing Approach to Predict Cholera	3/1/2015	2/28/2018
8/16/2016	AWD04946	RI Dept. of Transportation	Baxter,Christopher	WCPI	6640	33	\$2,191.20	Study of Scour at Rhode Island Bridges	1/1/2016	12/31/2017
8/16/2016	AWD04946	RI Dept. of Transportation	Bradshaw,Aaron	AWPI	6640	34	\$2,257.60	Study of Scour at Rhode Island Bridges	1/1/2016	12/31/2017
1/12/2017	AWD05712	National Science Foundation	Bradshaw,Aaron	WCPI	62009	25	\$15,502.25	RAPID: Lidar and Sonar Surveys of a Dune Reinforced with Geosynthetic Sand Containers Impacted by Tropical Storm Hermine	1/15/2017	12/31/2017
7/15/2016	AWD03983	RI Dept. of Transportation	Bradshaw,Aaron S.	AWPI	11723	100	\$11,723.00	Performance of micropiles in Rhode Island soils	9/30/2015	9/30/2016
9/27/2016	AWD05451	RI Dept. of Transportation	Craver,Vinka	AWPI	140185	100	\$140,185.00	Implementation of RIDOT Environmental Compliance Assistance Program (RHODECAP) to New Construction Projects	1/1/2017	7/31/2019
2/7/2017	AWD05653	RI Commerce Corporation	Craver,Vinka	OTH	50000	50	\$25,000.00	Harnessing the Power of Light to Clean Water	11/30/2016	11/29/2017
3/1/2017	AWD05825	The Woodard & Curran Foundation	Craver,Vinka	AWPI	33333	50	\$16,666.50	Designing Sustainable Water Systems for Climate Change: A Case Study in Rural Dominican Republic	11/1/2016	10/30/2019
4/4/2017	AWD05160	US Environ Protection Agcy	Craver,Vinka	AWPI	14890	100	\$14,890.00	Nanocellulose Extraction for the Manufacturing of Water Filters from Invasive Plant Material	9/1/2016	8/31/2017
5/2/2017	AWD05932	US Environ Protection Agcy	Craver,Vinka	AWPI	1535	100	\$1,535.00	Graphene Analysis Using FE-SEM	4/27/2017	4/26/2018
9/13/2016	AWD05456	RI Dept. of Transportation	Gindy,Mayrai	AWPI	70425	100	\$70,425.00	Automatic Interpretation of GPR Images Using Artificial Neural Networks	9/1/2016	12/31/2017
8/4/2016	AWD05513	Korea Institute for Civil Engineering &	Lee,Kang-Won	AWPI	62160	100	\$62,160.00	Classification of Cold Recycled Pavement Materials Contained Portland Cement (Phase II)	5/21/2016	4/20/2017

## DIVISION OF RESEARCH AND ECONOMIC DEVELOPMENT

### Dean Engineering

Total: \$64,876.00

AWARD DATE	AWARD ID	SPONSOR	INVESTIGATOR	ROLE	AWARD AMT	CREDIT	PORTION AMT	TITLE	BEGIN DATE	END DATE
11/29/2016	AWD05137	University of Connecticut STORRS	Wright,Raymond	AWPI	64876	100	\$64,876.00	Northeast LSAMP Senior Alliance: 2016-2021	9/1/2016	8/31/2021

### Elec, Computer & Bio Engr

Total: \$684,403.59

AWARD DATE	AWARD ID	SPONSOR	INVESTIGATOR	ROLE	AWARD AMT	CREDIT	PORTION AMT	TITLE	BEGIN DATE	END DATE
3/22/2017	AWD04310	US Dept of Interior	He,Haibo	WCPI	153042.04	16	\$24,486.72	CI - Electromagnetic Field Impacts on Elasmobranch (sharks, rays, and skates) and American Lobster Movement and Migration from Direct Current Cables	9/24/2014	1/31/2018
11/22/2016	AWD05159	Defense Engineering Corporation	Kay,Steven	AWPI	108500	100	\$108,500.00	Information-Theoretic Approaches to Radar Waveform Design	1/1/2016	12/31/2016
8/9/2016	AWD05073	National Science Foundation	Kennedy,Stephen	AWPI	324765	75	\$243,573.75	Remotely Activated Biomaterial Scaffolds for Flexibly Directig the Recruitment and Differentiation of Bone Progenitor Cells	8/1/2016	7/31/2019
9/15/2016	AWD05100	Rhode Island Hospital	Mankodiya,Kunal	AWPI	77950	100	\$77,950.00	Understanding the Interplay of Social Context and Physiology on Psychological Outcomes in Trauma-Exposed Adolescents	7/1/2016	3/31/2017
3/20/2017	AWD05478	National Science Foundation	Mankodiya,Kunal	AWPI	96468	100	\$96,468.00	Wearable IoT Hubs for In-Home Medical Interventions of Deep Brain Stimulationn	6/1/2017	5/31/2022
5/2/2017	AWD05609	University of Vermont	Mankodiya,Kunal	WCPI	14925	10	\$1,492.50	Testing Laser Scarecrows for Neighbor-Friendly Bird Damage Reduction in Sweet Corn on Peri-Urban Farms	2/20/2017	4/15/2018
5/4/2017	AWD05542	Lifespan Learning Institute	Mankodiya,Kunal	AWPI	24413	100	\$24,413.00	Understanding the Interplay of Social Context and Physiology on Psychological Outcomes in Trauma-Exposed Adolescents	3/9/2017	4/30/2017
8/5/2016	AWD05178	RI Commerce Corporation	Wei,Tao	AWPI	49921.25	50	\$24,960.62	RFID Tags for Traceability, Counterfeiting and Inventory Control	8/9/2016	6/1/2017
10/21/2016	AWD04479	National Science Foundation	Wei,Tao	AWPI	4950	60	\$2,970.00	A Low-Cost Velocimetry for Ultra-Fast Shock Wave Measurement	6/1/2015	5/31/2018
11/23/2016	AWD05693	URI Research Foundation	Wei,Tao	AWPI	79589	100	\$79,589.00	Joint Research Project Between Dapu Tech and URI	8/25/2016	8/15/2017

## DIVISION OF RESEARCH AND ECONOMIC DEVELOPMENT

### International Engineering Prog

**Total: \$25,000.00**

AWARD DATE	AWARD ID	SPONSOR	INVESTIGATOR	ROLE	AWARD AMT	CREDIT	PORTION AMT	TITLE	BEGIN DATE	END DATE
3/15/2017	AWD05725	The Partners of Americas Foundation	Berka,Sigrid	WCPI	25000	10	\$2,500.00	Sustainable Prostheses - An All Inclusive Approach to Designing in the Americas	1/1/2017	12/31/2017
3/15/2017	AWD05725	The Partners of Americas Foundation	Mankodiya,Kunal	WCPI	25000	50	\$12,500.00	Sustainable Prostheses - An All Inclusive Approach to Designing in the Americas	1/1/2017	12/31/2017
3/15/2017	AWD05725	The Partners of Americas Foundation	Scholz,Silke	AWPI	25000	40	\$10,000.00	Sustainable Prostheses - An All Inclusive Approach to Designing in the Americas	1/1/2017	12/31/2017

### Mech., Ind., Sys. Engineering

**Total: \$1,103,170.00**

AWARD DATE	AWARD ID	SPONSOR	INVESTIGATOR	ROLE	AWARD AMT	CREDIT	PORTION AMT	TITLE	BEGIN DATE	END DATE
7/8/2016	AWD04925	NERACOOS	Hashemi,S. M. Reza	AWPI	62307	100	\$62,307.00	Integrated Watershed and River Modeling Study of the Pawtuxet River, RI	5/1/2016	11/30/2017
7/15/2016	AWD05168	RI Commerce Corporation	Jouaneh,Musa	AWPI	45549	100	\$45,549.00	Design of a Novel Robotic Gripper	7/12/2016	7/12/2017
3/3/2017	AWD05661	RI Commerce Corporation	Jouaneh,Musa	AWPI	49814	100	\$49,814.00	Platform Development for Improved Control in Imaging of Nanomaterials	4/1/2017	12/31/2017
7/18/2016	AWD05185	RI_Commerce_Corporation	Rousseau,Carl-Ernst	WCPI	50000	50	\$25,000.00	HIPS Wind Energy Performance Study	5/1/2016	4/30/2017
12/26/2016	AWD05621	US of Office of Naval Research	Shukla,Arun	AWPI	30000	100	\$30,000.00	Implosion of Advanced Composite Structures Within Complex Underwater Environments	1/1/2017	12/31/2019
2/10/2017	AWD05621	US of Office of Naval Research	Shukla,Arun	AWPI	90000	100	\$90,000.00	Implosion of Advanced Composite Structures Within Complex Underwater Environments	1/1/2017	12/31/2019
2/13/2017	AWD04897	Naval Undersea Warfare Center	Shukla,Arun	AWPI	105000	100	\$105,000.00	Shock Response of Composite Materials Subjected to Aggressive Marine Environments: An Experimental and Computational Investigation	2/10/2017	2/9/2018
7/18/2016	AWD05185	RI_Commerce_Corporation	Taggart,David	AWPI	50000	50	\$25,000.00	HIPS Wind Energy Performance Study	5/1/2016	4/30/2017

## DIVISION OF RESEARCH AND ECONOMIC DEVELOPMENT

AWARD DATE	AWARD ID	SPONSOR	INVESTIGATOR	ROLE	AWARD AMT	CREDIT	PORTION AMT	TITLE	BEGIN DATE	END DATE
2/23/2017	AWD05025	GENERAL DYNAMICS ELECTRIC BOAT	Taggart,David	AWPI	650000	100	\$650,000.00	Engineering Internship Program	9/30/2016	12/31/2017
5/19/2017	AWD04307	RI Dept. of Transportation	Wang,Jyh-Hone	AWPI	20500	100	\$20,500.00	Automated Sidewalk Quality and ADA Compliance Assessment in Rhode Island	1/1/2016	2/28/2018

### Ocean Engineering

Total: \$1,454,963.33

AWARD DATE	AWARD ID	SPONSOR	INVESTIGATOR	ROLE	AWARD AMT	CREDIT	PORTION AMT	TITLE	BEGIN DATE	END DATE
1/12/2017	AWD05712	National Science Foundation	Baxter,Christopher	AWPI	62009	25	\$15,502.25	RAPID: Lidar and Sonar Surveys of a Dune Reinforced with Geosynthetic Sand Containers Impacted by Tropical Storm Hermine	1/15/2017	12/31/2017
8/4/2016	AWD05503	US of Office of Naval Research	Dahl,Jason	WCPI	60000	50	\$30,000.00	Further Development and Validation of an Efficient Hybrid-BEM-LBM Model for Fluid-Structure Interaction Problems	9/1/2016	8/31/2021
8/4/2016	AWD05370	US of Office of Naval Research	Dahl,Jason	AWPI	65000	100	\$65,000.00	Integrated Experiments and Simulation for Hydrodynamic Control and Detection	9/1/2016	8/31/2020
12/12/2016	AWD05370	US of Office of Naval Research	Dahl,Jason	AWPI	100000	100	\$100,000.00	Integrated Experiments and Simulation for Hydrodynamic Control and Detection	9/1/2016	8/31/2020
12/12/2016	AWD05503	US of Office of Naval Research	Dahl,Jason	WCPI	120000	50	\$60,000.00	Further Development and Validation of an Efficient Hybrid-BEM-LBM Model for Fluid-Structure Interaction Problems	9/1/2016	8/31/2021
12/2/2016	AWD05413	University of Delaware	Grilli,Annette	WCPI	107657	50	\$53,828.50	Modeling Tsunami Inundation and Hazard for the US East Coast (Phase 4)	9/1/2016	1/15/2017
2/7/2017	AWD05514	University of Victoria	Grilli,Annette	WCPI	98499	70	\$68,949.30	Development of Tsunami Detection Algorithms by HF Radar Applicable to the Area off of Vancouver Island BC	9/1/2016	1/10/2017
8/4/2016	AWD05503	US of Office of Naval Research	Grilli,Stephan	AWPI	60000	50	\$30,000.00	Further Development and Validation of an Efficient Hybrid-BEM-LBM Model for Fluid-Structure Interaction Problems	9/1/2016	8/31/2021
12/2/2016	AWD05413	University of Delaware	Grilli,Stephan	AWPI	107657	50	\$53,828.50	Modeling Tsunami Inundation and Hazard for the US East Coast (Phase 4)	9/1/2016	1/15/2017
12/12/2016	AWD05503	US of Office of Naval Research	Grilli,Stephan	AWPI	120000	50	\$60,000.00	Further Development and Validation of an Efficient Hybrid-BEM-LBM Model for Fluid-Structure Interaction Problems	9/1/2016	8/31/2021

## DIVISION OF RESEARCH AND ECONOMIC DEVELOPMENT

AWARD DATE	AWARD ID	SPONSOR	INVESTIGATOR	ROLE	AWARD AMT	CREDIT	PORTION AMT	TITLE	BEGIN DATE	END DATE
2/7/2017	AWD05514	University of Victoria	Grilli,Stephan	AWPI	98499	30	\$29,549.70	Development of Tsunami Detection Algorithms by HF Radar Applicable to the Area off of Vancouver Island BC	9/1/2016	1/10/2017
10/3/2016	AWD04881	Naval Undersea Warfare Center	Licht,Stephen	AWPI	104516.99	100	\$104,516.99	NEEC: Modeling and Control of Agile Biologically Inspired Unmanned Underwater Vehicles	9/30/2016	9/29/2017
1/12/2017	AWD05712	National Science Foundation	Licht,Steven M	WCPI	62009	25	\$15,502.25	RAPID: Lidar and Sonar Surveys of a Dune Reinforced with Geosynthetic Sand Containers Impacted by Tropical Storm Hermine	1/15/2017	12/31/2017
8/26/2016	AWD04935	HDR / e2M	Miller,James	AWPI	8666.22	50	\$4,333.11	Noise Measurements During Block Island Wind Farm Construction	9/30/2015	12/31/2016
9/6/2016	AWD04743	Brown University	Miller,James	AWPI	58649	50	\$29,324.50	Remote Sensing of Sub-Surface Structure of Exterrestrial Bodies Using Laser Doppler Velocimetry Measurements of Rayleigh Waves	5/6/2015	5/5/2017
10/24/2016	AWD05466	HDR / e2M	Miller,James	AWPI	272048.59	50	\$136,024.29	Underwater Acoustic Data Analysis and Measurements for the Block Island Wind Farm Construction and Operation	8/23/2016	12/31/2017
10/28/2016	AWD05336	US of Office of Naval Research	Miller,James	AWPI	110000	50	\$55,000.00	Low Frequency Acoustic Propagation: The Effects of Sediment Properties	4/1/2016	9/30/2019
2/14/2017	AWD05336	US of Office of Naval Research	Miller,James	AWPI	110000	50	\$55,000.00	Low Frequency Acoustic Propagation: The Effects of Sediment Properties	4/1/2016	9/30/2019
3/7/2017	AWD05466	HDR / e2M	Miller,James	AWPI	86383.04	50	\$43,191.52	Underwater Acoustic Data Analysis and Measurements for the Block Island Wind Farm Construction and Operation	8/23/2016	12/31/2017
5/5/2017	AWD05493	HDR / e2M	Miller,James	AWPI	9337	34	\$3,174.58	Passive Acoustic Monitoring in the Gulf of Mexico	4/17/2017	12/31/2017
8/26/2016	AWD04935	HDR / e2M	Potty,Gopu	WCPI	8666.22	50	\$4,333.11	Noise Measurements During Block Island Wind Farm Construction	9/30/2015	12/31/2016
9/6/2016	AWD04743	Brown University	Potty,Gopu	WCPI	58649	50	\$29,324.50	Remote Sensing of Sub-Surface Structure of Exterrestrial Bodies Using Laser Doppler Velocimetry Measurements of Rayleigh Waves	5/6/2015	5/5/2017
10/24/2016	AWD05466	HDR / e2M	Potty,Gopu	WCPI	272048.59	50	\$136,024.29	Underwater Acoustic Data Analysis and Measurements for the Block Island Wind Farm Construction and Operation	8/23/2016	12/31/2017
10/28/2016	AWD05336	US of Office of Naval Research	Potty,Gopu	WCPI	110000	50	\$55,000.00	Low Frequency Acoustic Propagation: The Effects of Sediment Properties	4/1/2016	9/30/2019
2/14/2017	AWD05336	US of Office of Naval Research	Potty,Gopu	WCPI	110000	50	\$55,000.00	Low Frequency Acoustic Propagation: The Effects of Sediment Properties	4/1/2016	9/30/2019

## DIVISION OF RESEARCH AND ECONOMIC DEVELOPMENT

AWARD DATE	AWARD ID	SPONSOR	INVESTIGATOR	ROLE	AWARD AMT	CREDIT	PORTION AMT	TITLE	BEGIN DATE	END DATE
3/7/2017	AWD05466	HDR / e2M	Potty,Gopu	WCPI	86383.04	50	\$43,191.52	Underwater Acoustic Data Analysis and Measurements for the Block Island Wind Farm Construction and Operation	8/23/2016	12/31/2017
5/5/2017	AWD05493	HDR / e2M	Potty,Gopu	WCPI	9337	33	\$3,081.21	Passive Acoustic Monitoring in the Gulf of Mexico	4/17/2017	12/31/2017
4/26/2017	AWD05506	US of Office of Naval Research	Van Uffelen,Lora J	AWPI	100000	100	\$100,000.00	Glider-Based Measurements of Acoustic Tomography Signals:Modeling and Experiment in the Canada Basin and Philippine Sea	3/15/2017	12/31/2019
5/5/2017	AWD05493	HDR / e2M	Van Uffelen,Lora J	WCPI	9337	33	\$3,081.21	Passive Acoustic Monitoring in the Gulf of Mexico	4/17/2017	12/31/2017
9/16/2016	AWD05277	MITRE Corporation	Vincent,Harold	AWPI	13202	100	\$13,202.00	COEUT: Multi-Static Sensor Array Testbed	4/1/2016	9/30/2016



## DIVISION OF RESEARCH AND ECONOMIC DEVELOPMENT

### Awards for College of the Environment and Life Sciences

From: 7/1/2016 To: 5/31/2017

Investigator Award Total: \$9,633,103.06

#### Biochem-Microb-Molecular Gen.

**Total: \$60,697.00**

AWARD DATE	AWARD ID	SPONSOR	INVESTIGATOR	ROLE	AWARD AMT	CREDIT	PORTION AMT	TITLE	BEGIN DATE	END DATE
7/21/2016	AWD04282	University of California at Davis	Rothman,Alan	AWPI	60697	100	\$60,697.00	Quantifying Heterogeneities in Dengue Virus Transmission Dynamics	5/1/2016	4/30/2017

#### CELS Academic Unit 1

**Total: \$2,464,866.61**

AWARD DATE	AWARD ID	SPONSOR	INVESTIGATOR	ROLE	AWARD AMT	CREDIT	PORTION AMT	TITLE	BEGIN DATE	END DATE
7/18/2016	AWD04638	Tri-State Turf Research Foundation	Alm,Steven	AWPI	11236	100	\$11,236.00	Surfactants and Synergists for Control of Annual Bluegrass Weevils on Golf Course Turf	1/20/2015	12/31/2017
10/11/2016	AWD05426	US Department of Agriculture	Alm,Steven	AWPI	202000	100	\$202,000.00	Risk Management and Crop Insurance Education for Rhode Island Growers 2016-17	9/30/2016	9/29/2017
8/5/2016	AWD05190	RI Commerce_Corporation	Bradley,Terence	AWPI	50000	100	\$50,000.00	Investigation of Spirulina Blue-Green Algae for Aquaculture Fish Feeds	6/15/2016	6/15/2017
8/19/2016	AWD05148	RI Dept. of Transportation	Brown,Rebecca	WCPI	223093	25	\$55,773.25	Evaluating the Effectiveness of Improved Roadside Best Management Practices in Maintaining Storm Water	9/1/2016	8/31/2019
10/6/2016	AWD05388	University of Vermont	Brown,Rebecca	AWPI	14638	100	\$14,638.00	Developing Production Protocol and Connecting Producers to Consumers of Vegetable Amaranth	7/29/2016	12/31/2017
3/31/2017	AWD05387	Eastern CT Conservation District	Brown,Rebecca	AWPI	4320.42	100	\$4,320.42	Cover Crops Initiative	8/1/2016	3/31/2018
5/2/2017	AWD05609	University of Vermont	Brown,Rebecca	AWPI	14925	80	\$11,940.00	Testing Laser Scarecrows for Neighbor-Friendly Bird Damage Reduction in Sweet Corn on Peri-Urban Farms	2/20/2017	4/15/2018

## DIVISION OF RESEARCH AND ECONOMIC DEVELOPMENT

AWARD DATE	AWARD ID	SPONSOR	INVESTIGATOR	ROLE	AWARD AMT	CREDIT	PORTION AMT	TITLE	BEGIN DATE	END DATE
8/16/2016	AWD05126	Cornell University	Casagrande,Richard	AWPI	109949	50	\$54,974.50	Developing Biocontrol for Invasive Phragmites Australis	6/1/2016	1/31/2021
5/16/2017	AWD05380	Bureau of Forestry Central Office Direct	Casagrande,Richard	WCPI	99000	30	\$29,700.00	Understanding and Exploiting Host Plant Resistance as a Tool for Eastern Hemlock Restoration in PA Forests	5/29/2016	11/29/2016
9/13/2016	AWD04437	US Department of Agriculture	Casagrande,Richard A	AWPI	161000	100	\$161,000.00	Extension Implementation Program for Rhode Island: Continuing a Tradition of Success	9/1/2014	8/31/2017
11/7/2016	AWD05660	University of Vermont	Faubert,Heather	AWPI	20500	100	\$20,500.00	Northeast Plant Diagnostic Network FY 2016	10/1/2016	10/31/2017
12/21/2016	AWD05412	Cornell University	Faubert,Heather	AWPI	20060	100	\$20,060.00	Northeast Plant Diagnostic Network FY 2016/2018	9/1/2016	8/31/2018
8/29/2016	AWD04659	University of Maryland	Gomez-Chiarri,Marta	WCPI	84215	33	\$27,790.95	Safe Feedstocks for Bivalve Aquaculture	9/1/2015	8/31/2017
9/27/2016	AWD05028	US Department of Agriculture	Gomez-Chiarri,Marta	AWPI	57750	100	\$57,750.00	Defining Disease Resistant and Tolerant Phenotypes Among Selectively Bred Oyster Families	9/1/2015	8/30/2019
2/15/2017	AWD05266	US Department of Agriculture	Gomez-Chiarri,Marta	AWPI	152000	100	\$152,000.00	Disease Resistance Tradeoffs and the Performance of Selectively-Bred Oysters Facing Endemic Disease	2/15/2017	2/14/2019
4/27/2017	AWD05811	Auburn University	Gomez-Chiarri,Marta	AWPI	10000	100	\$10,000.00	CELS: NRSP-8: Workshop in Comparative Genomics in Bivalves, Knoxville, TN, March 2017	3/31/2017	8/31/2017
5/9/2017	AWD05981	The Nature Conservancy	Gomez-Chiarri,Marta	AWPI	12000	50	\$6,000.00	Effects of Estuarine Acidification on Adult Eastern Oyster Microbiomes and Health in Narragansett Bay	3/1/2017	12/31/2017
11/17/2016	AWD05335	US Dept of Commerce NOAA	Hatzipetro,Mitchell	WCPI	185255	37.5	\$69,470.62	The Flatfish Deflector Bar: Excluding Flatfish from Scallop Dredges in the Northeast	8/1/2016	7/31/2017
1/31/2017	AWD05651	Kansas State University	Horan,Kristina	WCPI	20000	5	\$1,000.00	RI 2017 4-H Military Partnership Grant	10/1/2016	1/31/2017
5/18/2017	AWD05986	The Nature Conservancy	Humphries,Austin	AWPI	12000	100	\$12,000.00	The Ecological Potential for Gear-Based Solutions in Coral Reef Fisheries Conservation and Management	3/1/2017	12/31/2017
5/25/2017	AWD05779	University of Maine	Lee,Chong	AWPI	5000	100	\$5,000.00	A Novel Approach To Prevent Super Chill In Atlantic Salmon	10/1/2016	9/30/2018
12/21/2016	AWD05227	Western Connecticut State University	Mather,Thomas	AWPI	157676	100	\$157,676.00	Spatially Scalable Integrated Tick Vector/Rodent Reservoir Management to Reduce Human Risk of Exposure of Ixodes Scapularis Ticks Infected with Lyme Disease Spirochetes	9/1/2016	8/31/2017

## DIVISION OF RESEARCH AND ECONOMIC DEVELOPMENT

AWARD DATE	AWARD ID	SPONSOR	INVESTIGATOR	ROLE	AWARD AMT	CREDIT	PORTION AMT	TITLE	BEGIN DATE	END DATE
3/21/2017	AWD05270	Merck & Co.,Inc.	Mather,Thomas	AWPI	139560	100	\$139,560.00	Merck: Human Anti-Tick Immunity Study	1/1/2017	12/31/2017
5/3/2017	AWD05995	National Institute of Health	Mather,Thomas	AWPI	509609	100	\$509,609.00	Preventing Lyme Disease Exposure Among Outdoor Workers	9/1/2017	8/31/2018
1/31/2017	AWD05651	Kansas State University	Morreira,Marcia	WCPI	20000	5	\$1,000.00	RI 2017 4-H Military Partnership Grant	10/1/2016	1/31/2017
3/7/2017	AWD05374	RI Department of Health	Pivarnik,Lori	AWPI	146723	100	\$146,723.00	RI Plan to Enhance produce Safety by Implementing the DFA FSMA produce Safety Rule	2/13/2017	6/30/2021
2/24/2017	AWD05327	RI Dept of Environ Magt	Radin,Andrew M	AWPI	21851	100	\$21,851.00	Intensive Production Practices and Season Extension for African Vegetables on Rhode Island Urban Farms	4/1/2017	3/31/2019
5/2/2017	AWD05650	University of Vermont	Radin,Andrew M	AWPI	14963	100	\$14,963.00	Efficacy and Cost Effectiveness of Foliar Nutrient Applications to Vegetable Crops on a Large Rhode Island Farm	2/20/2017	4/15/2018
8/19/2016	AWD03778	US Department of Agriculture	Sebelia,Linda	AWPI	135000	100	\$135,000.00	CELS: INTEGRATING NUTRITION EDUCATION INTO PROVIDENCE FULL SERVICE SCHOOLS IN PROVIDENCE RI	9/1/2013	8/31/2017
11/17/2016	AWD05335	US Dept of Commerce NOAA	Skrobe,Laura	AWPI	185255	37.5	\$69,470.62	The Flatfish Deflector Bar: Excluding Flatfish from Scallop Dredges in the Northeast	8/1/2016	7/31/2017
11/17/2016	AWD05335	US Dept of Commerce NOAA	Somers,Barbara	WCPI	185255	25	\$46,313.75	The Flatfish Deflector Bar: Excluding Flatfish from Scallop Dredges in the Northeast	8/1/2016	7/31/2017
7/21/2016	AWD05345	University of Connecticut STORRS	Tewksbury,Elizabeth	AWPI	4000	100	\$4,000.00	Biological Control of Lily Leaf Beetle	4/1/2016	12/31/2016
8/16/2016	AWD05126	Cornell University	Tewksbury,Elizabeth	WCPI	109949	50	\$54,974.50	Developing Biocontrol for Invasive Phragmites Australis	6/1/2016	1/31/2021
5/5/2017	AWD05788	US Department of Agriculture	Tewksbury,Elizabeth	AWPI	11290	100	\$11,290.00	2017 Farm Bill Grape Commodity Survey	4/1/2017	3/31/2018
10/11/2016	AWD04265	Tufts University	Tovar,Alison	AWPI	17000	100	\$17,000.00	System Science to Guide Whole-of-Community Childhood Obesity Interventions	5/1/2015	4/30/2017
1/19/2017	AWD03966	Brown University	Tovar,Alison	AWPI	70282	100	\$70,282.00	Improving nutrition and physical activity environments in home-based child care	8/1/2014	5/31/2017
7/20/2016	AWD05044	RI Office of Energy Resources	Trandafir,Simona	AWPI	70000	100	\$70,000.00	Technical and Strategic Support for the Efficient Buildings Fund	7/1/2016	12/31/2017
1/31/2017	AWD05651	Kansas State University	Wright,Heidi	AWPI	20000	90	\$18,000.00	RI 2017 4-H Military Partnership Grant	10/1/2016	1/31/2017

## DIVISION OF RESEARCH AND ECONOMIC DEVELOPMENT

### CELS Academic Unit 2

Total: \$2,787,667.29

AWARD DATE	AWARD ID	SPONSOR	INVESTIGATOR	ROLE	AWARD AMT	CREDIT	PORTION AMT	TITLE	BEGIN DATE	END DATE
12/30/2016	AWD05317	Barnstable County	Amador,Jose	AWPI	181717	50	\$90,858.50	Full-Scale Assessment of Non-proprietary Passive Nitrogen Removing Septic Systems	9/1/2016	8/31/2020
2/8/2017	AWD05312	Town of Charlestown	Amador,Jose	AWPI	302923	50	\$151,461.50	Charlestown Coastal Watershed Protection and Restoration Program	8/1/2016	7/31/2020
7/7/2016	AWD05440	Rhode Island Statewide Planning	August,Peter	AWPI	56000	100	\$56,000.00	CI - FY2017 Sustaining and Enhancing Access to the Rhode Island Geographic Information System (RIGIS) Geospatial Database	7/1/2016	6/30/2017
8/23/2016	AWD04871	US Dept of Interior	August,Peter	AWPI	117370	25	\$29,342.50	CI - Resource Based Geospatial and Enterprise GIS Supplort to the NER of the NPS FY15	8/22/2016	12/31/2017
11/4/2016	AWD05656	McLaughlin Research Corporation	August,Peter	AWPI	35276	100	\$35,276.00	CI - GIS Support Services for the Naval Undersea Warfare (NUWC DIVNPT) Center's Marine Environmental Planning Laboratory (MEP)	9/22/2016	9/21/2017
3/28/2017	AWD05696	RI Coastal Res Mgt.Council	August,Peter	AWPI	17982	100	\$17,982.00	CI - Eelgrass (Zostera marina L) Tier 1 Accuracy Assessment and Monitoring	3/20/2017	3/20/2019
7/14/2016	AWD04428	AmericaView	August,Peter V	WCPI	23500	25	\$5,875.00	CI - AmericaView Affiliate Development Grant Opportunity	7/1/2016	6/30/2017
8/29/2016	AWD04872	US Army Corps of Engineers	Becker,Austin H	AWPI	67384	100	\$67,384.00	CI - Measuring Risk to Inform Resilience: Pilot Study for North Atlantic Medium and High Use Maritime Freight Nodes	6/20/2016	12/31/2016
10/21/2016	AWD05464	US Dept of Interior	Bidwell,David	WCPI	314300	16	\$50,288.00	CI - Identifying Indicators of Offshore Wind Benefits: An Analysis of the Effects of the Block Island Wind Farm on Rhode Island Recreation and Tourism Activities	9/21/2016	12/31/2018
10/18/2016	AWD05452	RI Coastal Res Mgt.Council	Bonynge,Gregory	WCPI	219890	45	\$98,950.50	CI - HUD III-Shoreline Change Special Area Management Plan (Beach SAMP): Coastal Parcel Data Set and Shoreline Change Mapping for CERl	10/1/2016	9/30/2017
7/14/2016	AWD04428	AmericaView	Bonynge,Gregory H	WCPI	23500	25	\$5,875.00	CI - AmericaView Affiliate Development Grant Opportunity	7/1/2016	6/30/2017
4/19/2017	AWD05485	Craig H. Neilsen Foundation	Bourbonniere,Annette M	WCPI	98975	30	\$29,692.50	Using Stated Preferences to Examine Disincentives to Employment for Persons with Spinal Cord Injuries	4/30/2017	4/29/2018
8/1/2016	AWD04755	The Energy and Resource Institute	Boving,Thomas	AWPI	5661	100	\$5,661.00	From Polluted Rivers to Clean Irrigation Water	5/7/2016	5/5/2017

## DIVISION OF RESEARCH AND ECONOMIC DEVELOPMENT

AWARD DATE	AWARD ID	SPONSOR	INVESTIGATOR	ROLE	AWARD AMT	CREDIT	PORTION AMT	TITLE	BEGIN DATE	END DATE
8/4/2016	AWD05329	ADOX Technologies - Intl. Dioxide, Inc	Boving,Thomas	AWPI	7018	50	\$3,509.00	NMR Study of ClO <sub>2</sub> / Alpha-Cyclodextrin Complexation	5/31/2016	6/30/2016
8/19/2016	AWD05148	RI Dept. of Transportation	Boving,Thomas	WCPI	223093	25	\$55,773.25	Evaluating the Effectiveness of Improved Roadside Best Management Practices in Maintaining Storm Water	9/1/2016	8/31/2019
8/31/2016	AWD05538	RI Water Resources Board	Boving,Thomas	AWPI	6517	50	\$3,258.50	RIWRB Proposal Development Project	7/1/2016	10/31/2016
9/6/2016	AWD05373	RI Department of Administration	Boving,Thomas	WCPI	275000	50	\$137,500.00	Scituate Reservoir Mitigation Model: Feasibility of a Retrofit and Concurrent Safe Yield Analysis	9/1/2016	9/30/2018
2/7/2017	AWD05653	RI Commerce Corporation	Boving,Thomas	AWPI	50000	50	\$25,000.00	Harnessing the Power of Light to Clean Water	11/30/2016	11/29/2017
3/1/2017	AWD05741	International Dioxide, Inc.	Boving,Thomas	WCPI	80000	50	\$40,000.00	Cyclodextrin-Based Complexation of Small Molecules for Improved Toxicant Degradation and Water Purification Efforts	2/1/2017	12/31/2017
7/19/2016	AWD04994	Brown University	Cardace,Dawn	AWPI	8500	100	\$8,500.00	Tackling the Astrobiological Potential of Hydrothermal Processes: Comparing Distributions of Minerals and Organics in Earth's Seabed Hydrothermal Deposits and Serpentinites Using Micro-FIR	6/1/2016	8/31/2016
10/6/2016	AWD05400	Brown University	Cardace,Dawn	AWPI	42887	100	\$42,887.00	Connecting Serpentinite Whole Rock Geochemistry to Astrobiology	8/15/2016	8/31/2017
11/22/2016	AWD05445	University of California, Los Angeles	Cardace,Dawn	AWPI	8959	100	\$8,959.00	Flux and Fate of Reduced Carbon in a Carbonate-Capped, Serpentinizing System: Palawan, Philippines	10/1/2016	3/15/2017
8/23/2016	AWD04871	US Dept of Interior	Cressman,Jessica A.	WCPI	117370	25	\$29,342.50	CI - Resource Based Geospatial and Enterprise GIS Support to the NER of the NPS FY15	8/22/2016	12/31/2017
8/15/2016	AWD05405	US Dept of Interior	Druschke,Caroline	AWPI	40493	100	\$40,493.00	CI - Science Communication Outreach for the Northeast Coastal and Barrier Network	6/15/2016	10/31/2017
8/23/2016	AWD04871	US Dept of Interior	Duhaime,Roland	WCPI	117370	25	\$29,342.50	CI - Resource Based Geospatial and Enterprise GIS Support to the NER of the NPS FY15	8/22/2016	12/31/2017
10/12/2016	AWD05600	UNESCO	Engelhart,Simon	AWPI	8000	100	\$8,000.00	Sea-Level Changes from Minutes to Millennia	3/8/2016	12/31/2016
12/21/2016	AWD05407	US Geological Survey	Engelhart,Simon	AWPI	18050	100	\$18,050.00	A Comparative Analysis of Onshore-Offshore Paleoseismic Archives: Collab. Research with Oregon State University and URI	1/1/2017	12/31/2017

## DIVISION OF RESEARCH AND ECONOMIC DEVELOPMENT

AWARD DATE	AWARD ID	SPONSOR	INVESTIGATOR	ROLE	AWARD AMT	CREDIT	PORTION AMT	TITLE	BEGIN DATE	END DATE
3/4/2017	AWD05814	Earthwatch Institute, Inc.	Engelhart,Simon	AWPI	14540	100	\$14,540.00	Reconstructing Sea-Level Rise in New England Salt Marshes	2/13/2017	2/12/2018
9/6/2016	AWD05116	Research Foundation of CUNY/ CUNYASRC	Gold,Arthur	AWPI	37019	100	\$37,019.00	CI - CNH-L: Multi-Scale Coupled Natural Human System Dynamics of Nitrogen in Residential Landscapes	7/1/2016	6/30/2019
10/4/2016	AWD04418	RI Department of Health	Gold,Arthur J	WCPI	200000	30	\$60,000.00	CI - Municipal Capacity Training and Public Outreach Source Water Protection Project	7/1/2014	6/30/2017
4/27/2017	AWD04418	RI Department of Health	Gold,Arthur J	WCPI	56520	30	\$16,956.00	CI - Municipal Capacity Training and Public Outreach Source Water Protection Project	7/1/2014	6/30/2017
10/20/2016	AWD04766	Wildlife Management Institute	Husband,Thomas	AWPI	210910	100	\$210,910.00	WMI Service Contract to Support Wildlife Management of New England Cottontail (Sylvilagus Transitionalis)	3/20/2015	3/19/2019
10/4/2016	AWD04418	RI Department of Health	Joubert,Lorraine B	AWPI	200000	35	\$70,000.00	CI - Municipal Capacity Training and Public Outreach Source Water Protection Project	7/1/2014	6/30/2017
4/27/2017	AWD04418	RI Department of Health	Joubert,Lorraine B	AWPI	56520	35	\$19,782.00	CI - Municipal Capacity Training and Public Outreach Source Water Protection Project	7/1/2014	6/30/2017
1/19/2017	AWD04985	US Dept of Interior	Karraker,Nancy	AWPI	69627	100	\$69,627.00	CI - Inventory of Amphibians and Reptiles at Colonial National Historical Park	8/14/2015	8/1/2018
1/9/2017	AWD05753	US Department of Agriculture	Kirby,John	AWPI	46448	100	\$46,448.00	Renewable Resources 2017	10/1/2016	9/30/2018
7/14/2016	AWD04428	AmericaView	Labash,Charles	WCPI	23500	25	\$5,875.00	CI - AmericaView Affiliate Development Grant Opportunity	7/1/2016	6/30/2017
8/23/2016	AWD04871	US Dept of Interior	Labash,Charles	WCPI	117370	25	\$29,342.50	CI - Resource Based Geospatial and Enterprise GIS Support to the NER of the NPS FY15	8/22/2016	12/31/2017
12/30/2016	AWD05317	Barnstable County	Loomis,George	WCPI	181717	50	\$90,858.50	Full-Scale Assessment of Non-proprietary Passive Nitrogen Removing Septic Systems	9/1/2016	8/31/2020
2/8/2017	AWD05312	Town of Charlestown	Loomis,George	WCPI	302923	50	\$151,461.50	Charlestown Coastal Watershed Protection and Restoration Program	8/1/2016	7/31/2020
10/4/2016	AWD04418	RI Department of Health	Mccann,Alyson	WCPI	200000	35	\$70,000.00	CI - Municipal Capacity Training and Public Outreach Source Water Protection Project	7/1/2014	6/30/2017
4/27/2017	AWD04418	RI Department of Health	Mccann,Alyson	WCPI	56520	35	\$19,782.00	CI - Municipal Capacity Training and Public Outreach Source Water Protection Project	7/1/2014	6/30/2017

## DIVISION OF RESEARCH AND ECONOMIC DEVELOPMENT

AWARD DATE	AWARD ID	SPONSOR	INVESTIGATOR	ROLE	AWARD AMT	CREDIT	PORTION AMT	TITLE	BEGIN DATE	END DATE
5/25/2017	AWD05140	RI Coastal Res Mgt.Council	Meyerson,Laura A	AWPI	15000	100	\$15,000.00	Restoration of Diamondback Terrapin Nesting Habitat on the Potowomut River	4/1/2017	3/31/2018
10/21/2016	AWD05464	US Dept of Interior	Moore,Amelia	WCPI	314300	16	\$50,288.00	CI - Identifying Indicators of Offshore Wind Benefits: An Analysis of the Effects of the Block Island Wind Farm on Rhode Island Recreation and Tourism Activities	9/21/2016	12/31/2018
2/16/2017	AWD05791	Mars Symbioscience	Moore,Amelia	AWPI	30240	100	\$30,240.00	MSS Coral Restoration Baseline Study	7/1/2016	3/30/2017
10/13/2016	AWD04989	University of North Carolina - CH	Opaluch,James	WCPI	436036	24	\$104,648.64	CI - Dept. of Homeland Security Coastal Resilience Center of Excellence Projects	1/1/2016	6/30/2017
4/19/2017	AWD05485	Craig H. Neilsen Foundation	Opaluch,James	AWPI	98975	40	\$39,590.00	Using Stated Preferences to Examine Disincentives to Employment for Persons with Spinal Cord Injuries	4/30/2017	4/29/2018
7/28/2016	AWD05323	US Fish and Wildlife Service	Paton,Peter	AWPI	21115	100	\$21,115.00	CI - Tern and Plover Nanotag Study - Southern New England and New York	7/18/2016	5/31/2017
12/22/2016	AWD05734	US Fish and Wildlife Service	Paton,Peter	AWPI	109920	100	\$109,920.00	CI - Tracking Movements of Endangered Roseate Terns and Threatened Piping Plovers During Breeding, Post-Breeding and Fall Migration Periods	1/15/2017	12/31/2018
8/19/2016	AWD05148	RI Dept. of Transportation	Pradhanang,Soni	AWPI	223093	50	\$111,546.50	Evaluating the Effectiveness of Improved Roadside Best Management Practices in Maintaining Storm Water	9/1/2016	8/31/2019
8/31/2016	AWD05538	RI Water Resources Board	Pradhanang,Soni	WCPI	6517	50	\$3,258.50	RWRB Proposal Development Project	7/1/2016	10/31/2016
9/6/2016	AWD05373	RI Department of Administration	Pradhanang,Soni	AWPI	275000	50	\$137,500.00	Scituate Reservoir Mitigation Model: Feasibility of a Retrofit and Concurrent Safe Yield Analysis	9/1/2016	9/30/2018
4/19/2017	AWD05485	Craig H. Neilsen Foundation	Roush,Susan	WCPI	98975	30	\$29,692.50	Using Stated Preferences to Examine Disincentives to Employment for Persons with Spinal Cord Injuries	4/30/2017	4/29/2018
5/16/2017	AWD05380	Bureau of Forestry Central Office Direct	Thornber,Carol	WCPI	99000	10	\$9,900.00	Understanding and Exploiting Host Plant Resistance as a Tool for Eastern Hemlock Restoration in PA Forests	5/29/2016	11/29/2016
12/21/2016	AWD05346	Mass Audubon	Uchida,Emi	WCPI	278076	40	\$111,230.40	CI - US EPA Region 1 Southeast New England Program for Coastal Watershed	10/1/2016	9/30/2019
7/14/2016	AWD04428	AmericaView	Wang,Yeqiao	AWPI	23500	25	\$5,875.00	CI - AmericaView Affiliate Development Grant Opportunity	7/1/2016	6/30/2017

## DIVISION OF RESEARCH AND ECONOMIC DEVELOPMENT

### CELS Academic Unit 3

Total: \$2,473,149.24

AWARD DATE	AWARD ID	SPONSOR	INVESTIGATOR	ROLE	AWARD AMT	CREDIT	PORTION AMT	TITLE	BEGIN DATE	END DATE
3/28/2017	AWD05264	National Institute of Health	Camberg,Jodi	AWPI	286265	100	\$286,265.00	Mechanism of Cell Division in Prokaryotes	4/1/2017	2/28/2018
5/16/2017	AWD05881	RI Dept of Environ Magt	Couret,Jannelle	AWPI	19558	100	\$19,558.00	Invasion of a Zika Vector: Environmental and Ecological Forces Underlying the Spread of Aedes Albopictus	5/22/2017	10/30/2017
10/26/2016	AWD05623	Zoetis	De Groot,Anne	AWPI	19955	100	\$19,955.00	Analysis of PRRSV Peptides	10/20/2016	10/19/2017
1/10/2017	AWD05623	Zoetis	De Groot,Anne	AWPI	15350	100	\$15,350.00	Analysis of PRRSV Peptides	10/20/2016	10/19/2017
8/18/2016	AWD05404	Pearson Education	Dewsbury,Bryan M	AWPI	5000	100	\$5,000.00	Reflection Assignments and the Academic Performance of Underrepresented Minorities	6/1/2016	5/31/2017
8/26/2016	AWD05172	RI Board of Gov for High Ed	Dewsbury,Bryan M	AWPI	10100	100	\$10,100.00	The Effects of Social Emtional Learning on Academic Performance and Behavior	3/1/2016	6/30/2016
3/3/2017	AWD05748	Brown University	Gregory,Steven	AWPI	42000	100	\$42,000.00	Structural Robustness of Ribosome Functional Centers	1/1/2017	4/30/2017
5/17/2017	AWD05748	Brown University	Gregory,Steven	AWPI	149663	100	\$149,663.00	Structural Robustness of Ribosome Functional Centers	1/1/2017	4/30/2018
3/20/2017	AWD04879	National Institute of Health	Lane,Christopher	AWPI	72557	100	\$72,557.00	Comparative Genomics of a Unique Mutualistic Apicomplexan	4/1/2017	3/31/2018
9/29/2016	AWD05479	CHEROKEE NATION TECHNOLOGY SOLUTIONS	Mathew,Anuja	AWPI	11656.16	100	\$11,656.16	Generation of Fluorescently Labeled Dengue Viruses	9/19/2016	10/19/2016
11/22/2016	AWD05479	CHEROKEE NATION TECHNOLOGY SOLUTIONS	Mathew,Anuja	AWPI	38343.84	100	\$38,343.84	Generation of Fluorescently Labeled Dengue Viruses	9/19/2016	9/18/2017
7/21/2016	AWD04885	Restore America's Estuaries	Moseman-Valtierra,Serena	AWPI	22078	100	\$22,078.00	Expanding Blue Carbon Implementation: Increasing GHG Model Application in Tidally Restricted and Restored New England Salt Marshes	1/1/2016	8/31/2017
8/29/2016	AWD04659	University of Maryland	Nelson,David	WCPI	84215	33	\$27,790.95	Safe Feedstocks for Bivalve Aquaculture	9/1/2015	8/31/2017



## DIVISION OF RESEARCH AND ECONOMIC DEVELOPMENT

AWARD DATE	AWARD ID	SPONSOR	INVESTIGATOR	ROLE	AWARD AMT	CREDIT	PORTION AMT	TITLE	BEGIN DATE	END DATE
5/16/2017	AWD05380	Bureau of Forestry Central Office Direct	Preisser,Evan	AWPI	99000	60	\$59,400.00	Understanding and Exploiting Host Plant Resistance as a Tool for Eastern Hemlock Restoration in PA Forests	5/29/2016	11/29/2016
8/11/2016	AWD03994	Pennsylvania State University	Roberts,Alison	AWPI	101005	100	\$101,005.00	CENTER FOR LIGNOCELLULOSE STRUCTURE AND FORMATION (CLSF)	8/1/2014	7/31/2017
8/18/2016	AWD05072	United States Army	Rothman,Alan	AWPI	1427065	100	\$1,427,065.00	Systems Biology of the Immune Response to Live and Inactivated Dengue Virus Vaccines	9/1/2016	8/31/2018
8/29/2016	AWD04971	CHEROKEE NATION TECHNOLOGY SOLUTIONS	Rothman,Alan	AWPI	44184.29	100	\$44,184.29	Development of Immunology Research Agenda To Support the WRAIR...	8/1/2015	7/31/2017
4/6/2017	AWD04929	National Science Foundation	Zhang,Ying	AWPI	121178	100	\$121,178.00	CAREER: Integrated Annotation and Comparative Analysis of Metabolic Models	4/1/2016	3/31/2021

### Dean Environment Life Science

**Total: \$1,671,936.00**

AWARD DATE	AWARD ID	SPONSOR	INVESTIGATOR	ROLE	AWARD AMT	CREDIT	PORTION AMT	TITLE	BEGIN DATE	END DATE
8/31/2016	AWD04161	US Dept of Interior	Boothroyd,Jon C	WCPI	200000	33	\$66,000.00	CI IDENTIFICATION OF SAND/GRAVEL RESOURCES IN RHODE ISLAND WATERS	7/29/2014	7/31/2018
9/22/2016	AWD05576	US Department of Agriculture	Kirby,John	AWPI	147513	100	\$147,513.00	FY 17 McIntire Stennis Land Grant	10/1/2016	9/30/2018
10/1/2016	AWD05583	US Department of Agriculture	Kirby,John	AWPI	150122	100	\$150,122.00	Hatch Regional FY 17	10/1/2016	9/30/2018
10/10/2016	AWD05654	US Department of Agriculture	Kirby,John	AWPI	148902	100	\$148,902.00	FY 17 Hatch Formula	10/1/2016	9/30/2018
10/24/2016	AWD05614	US Department of Agriculture	Kirby,John	AWPI	1133542	100	\$1,133,542.00	FY 17 Coop Extension 3(b)3(c)	10/1/2016	9/30/2021
11/25/2016	AWD05709	US Department of Agriculture	Kirby,John	AWPI	6803	100	\$6,803.00	CSRS Federal Retirement FY 13	10/1/2012	6/30/2017
12/1/2016	AWD05715	US Department of Agriculture	Kirby,John	AWPI	5387	100	\$5,387.00	CSRS Federal Retirement FY 14	10/1/2016	6/30/2018

## DIVISION OF RESEARCH AND ECONOMIC DEVELOPMENT

AWARD DATE	AWARD ID	SPONSOR	INVESTIGATOR	ROLE	AWARD AMT	CREDIT	PORTION AMT	TITLE	BEGIN DATE	END DATE
12/1/2016	AWD05719	US Department of Agriculture	Kirby,John	AWPI	3267	100	\$3,267.00	CSRS Federal Retirement FY 15	10/1/2014	6/30/2019
7/12/2016	AWD04280	USDA Forest Service	Sheely,Deborah L	AWPI	13000	80	\$10,400.00	Northeast Climate Hub	7/1/2014	6/30/2019

### Fish-Animal-Vet-Science

**Total: \$83,288.92**

AWARD DATE	AWARD ID	SPONSOR	INVESTIGATOR	ROLE	AWARD AMT	CREDIT	PORTION AMT	TITLE	BEGIN DATE	END DATE
9/30/2016	AWD03911	University of Connecticut Avery Point	Bengtson,David A	AWPI	6300	100	\$6,300.00	ALTERNATIVE FEEDS AND PROCESSING FOR FRESHWATER FISH	10/1/2014	12/31/2017
7/12/2016	AWD04129	US Department of Agriculture	Rhodes III,Richard C	WCPI	222689.27	10	\$22,268.92	CI- WEST AFRICA ANALYTICAL SUPPORT SERVICES AND EVALUATIONS FOR	3/1/2014	3/19/2019
2/16/2017	AWD04129	US Department of Agriculture	Rhodes III,Richard C	WCPI	250000	10	\$25,000.00	CI- WEST AFRICA ANALYTICAL SUPPORT SERVICES AND EVALUATIONS FOR	3/1/2014	3/19/2019
10/25/2016	AWD03801	Fisheries Specialists	Skrobe,Laura G	AWPI	29720	100	\$29,720.00	Industry based survey on black sea bass utilizing ventless traps	11/3/2013	12/31/2017

### Geosciences

**Total: \$88,898.00**

AWARD DATE	AWARD ID	SPONSOR	INVESTIGATOR	ROLE	AWARD AMT	CREDIT	PORTION AMT	TITLE	BEGIN DATE	END DATE
3/7/2017	AWD03725	Regents of New Mexico State University	Boving,Thomas B	PI	88898	100	\$88,898.00	ADVANCED OXIDATION OF 1, 4-DIOXANE	9/17/2013	9/16/2017

### Natural Res. Science

**Total: \$2,600.00**

## DIVISION OF RESEARCH AND ECONOMIC DEVELOPMENT

AWARD DATE	AWARD ID	SPONSOR	INVESTIGATOR	ROLE	AWARD AMT	CREDIT	PORTION AMT	TITLE	BEGIN DATE	END DATE
7/12/2016	AWD04280	USDA Forest Service	Gold, Arthur J	WCPI	13000	20	\$2,600.00	Northeast Climate Hub	7/1/2014	6/30/2019

## DIVISION OF RESEARCH AND ECONOMIC DEVELOPMENT

### Awards for College of Health Sciences

From: 7/1/2016 To: 5/31/2017

Investigator Award Total: \$3,569,035.64

#### Cancer Prevention Res. Ctr

**Total: \$1,316,425.64**

AWARD DATE	AWARD ID	SPONSOR	INVESTIGATOR	ROLE	AWARD AMT	CREDIT	PORTION AMT	TITLE	BEGIN DATE	END DATE
2/2/2017	AWD04804	RI Dept of Behavioral Healthcare, Development	Paiva,Andrea	AWPI	34209	100	\$34,209.00	BHDDH School Survey	7/1/2016	7/1/2017
10/13/2016	AWD04989	University of North Carolina - CH	Prochaska,James O	WCPI	436036	24	\$104,648.64	CI - Dept. of Homeland Security Coastal Resilience Center of Excellence Projects	1/1/2016	6/30/2017
1/10/2017	AWD05091	Yale University	Redding,Colleen	AWPI	213758	100	\$213,758.00	Enhancing Engagement in Advance Care Planning	9/27/2016	12/31/2016
3/8/2017	AWD05088	Brown University	Spillane,Nichea	AWPI	13190	100	\$13,190.00	Positive Psychotherapy for Smoking Cessation Enhanced with Text Messaging: A Randomized Controlled Trial	7/4/2016	6/30/2017
7/8/2016	AWD04811	Kent Center	Stein,Lynda	AWPI	12500	100	\$12,500.00	Healthy Transitions - The Kent Center	10/1/2015	9/30/2016
8/31/2016	AWD04809	RI Dept of Behavioral Healthcare, Development	Stein,Lynda	AWPI	124060	100	\$124,060.00	Healthy Transitions - BHDDH	1/1/2015	12/31/2019
10/12/2016	AWD05087	RI Dept of Behavioral Healthcare, Development	Stein,Lynda	AWPI	50000	100	\$50,000.00	BHDDH - Youth Treatment Planning Project	2/1/2016	9/29/2017
10/13/2016	AWD04809	RI Dept of Behavioral Healthcare, Development	Stein,Lynda	AWPI	124060	100	\$124,060.00	Healthy Transitions - BHDDH	1/1/2015	9/29/2017
11/1/2016	AWD04811	Kent Center	Stein,Lynda	AWPI	12500	100	\$12,500.00	Healthy Transitions - The Kent Center	10/1/2015	9/30/2017
1/24/2017	AWD05736	RI Dept of Behavioral Healthcare, Development	Stein,Lynda	AWPI	123000	100	\$123,000.00	RI SBIRT	9/30/2016	9/28/2017
2/13/2017	AWD05736	RI Dept of Behavioral Healthcare, Development	Stein,Lynda	AWPI	492000	100	\$492,000.00	RI SBIRT	1/30/2017	12/28/2021

## DIVISION OF RESEARCH AND ECONOMIC DEVELOPMENT

AWARD DATE	AWARD ID	SPONSOR	INVESTIGATOR	ROLE	AWARD AMT	CREDIT	PORTION AMT	TITLE	BEGIN DATE	END DATE
3/7/2017	AWD04810	Community Care Alliance	Stein, Lynda	AWPI	12500	100	\$12,500.00	Healthy Transitions - Community Care Alliance	10/1/2015	9/30/2017

### Human Development & Family Stu

**Total: \$74,950.00**

AWARD DATE	AWARD ID	SPONSOR	INVESTIGATOR	ROLE	AWARD AMT	CREDIT	PORTION AMT	TITLE	BEGIN DATE	END DATE
12/30/2016	AWD05483	Rhode Island College	Mccurdy, Karen	AWPI	74950	100	\$74,950.00	Recruitment and Retention of Early Childhood Professionals in Early Intervention Programs	7/1/2016	5/30/2017

### Kinesiology

**Total: \$3,000.00**

AWARD DATE	AWARD ID	SPONSOR	INVESTIGATOR	ROLE	AWARD AMT	CREDIT	PORTION AMT	TITLE	BEGIN DATE	END DATE
2/7/2017	AWD05507	United Citrus Corporation	Earp, Jacob M	AWPI	3000	60	\$1,800.00	Fuelocity Plus Muscle Cramping Study	9/10/2016	5/31/2017
2/7/2017	AWD05507	United Citrus Corporation	Ward, Cristine A	WCPI	3000	40	\$1,200.00	Fuelocity Plus Muscle Cramping Study	9/10/2016	5/31/2017

### Nutrition & Food Sciences

**Total: \$1,424,611.00**

AWARD DATE	AWARD ID	SPONSOR	INVESTIGATOR	ROLE	AWARD AMT	CREDIT	PORTION AMT	TITLE	BEGIN DATE	END DATE
9/30/2016	AWD05578	US Department of Agriculture	Kirby, John	AWPI	146724	100	\$146,724.00	EFNEP FY 2017	10/1/2016	9/30/2020
1/1/2017	AWD05509	RI Dept of Human Services	Sebelia, Linda	AWPI	1237081	100	\$1,237,081.00	RI SNAP-Ed 2017	10/1/2014	9/30/2017

## DIVISION OF RESEARCH AND ECONOMIC DEVELOPMENT

AWARD DATE	AWARD ID	SPONSOR	INVESTIGATOR	ROLE	AWARD AMT	CREDIT	PORTION AMT	TITLE	BEGIN DATE	END DATE
1/19/2017	AWD05787	Brown University	Tovar,Alison	AWPI	40806	100	\$40,806.00	Improving Nutrition and Physical Activity Environments In Home -Based Child Care	8/1/2014	5/31/2017

### Physical Therapy

**Total: \$497,888.00**

AWARD DATE	AWARD ID	SPONSOR	INVESTIGATOR	ROLE	AWARD AMT	CREDIT	PORTION AMT	TITLE	BEGIN DATE	END DATE
7/11/2016	AWD05441	National Institute of Health	Roush,Susan	AWPI	487511	100	\$487,511.00	RIDDC FY 2016	10/1/2015	9/30/2017
8/18/2016	AWD05441	National Institute of Health	Roush,Susan	AWPI	10377	100	\$10,377.00	RIDDC FY 2016	10/1/2015	9/30/2017

### Psychology

**Total: \$252,161.00**

AWARD DATE	AWARD ID	SPONSOR	INVESTIGATOR	ROLE	AWARD AMT	CREDIT	PORTION AMT	TITLE	BEGIN DATE	END DATE
3/3/2017	AWD03834	RI Dept of Behavioral Healthcare,Development	Florin,Paul R	AWPI	78985	100	\$78,985.00	STATE LEVEL EVALUATION BUDGET FOR RI PARTNERSHIP FOR SUCCESS	9/30/2015	9/30/2017
3/7/2017	AWD03835	RI Dept of Behavioral Healthcare,Development	Florin,Paul R	AWPI	173176	100	\$173,176.00	LOCAL LEVEL EVALUATION OF PARTNERSHIPS FOR SUCCESS	9/30/2015	9/30/2017

# DIVISION OF RESEARCH AND ECONOMIC DEVELOPMENT

## Awards for Graduate School of Oceanography

From: 7/1/2016 To: 5/31/2017

Investigator Award Total: \$26,455,414.85

### GSO Coastal Resources Center

**Total: \$9,574,545.51**

AWARD DATE	AWARD ID	SPONSOR	INVESTIGATOR	ROLE	AWARD AMT	CREDIT	PORTION AMT	TITLE	BEGIN DATE	END DATE
10/4/2016	AWD04536	US Agcy for International Dev.	Crawford,Brian	AWPI	2200000	50	\$1,100,000.00	CI - Ghana Sustainable Fisheries Management Project	1/1/2014	10/31/2019
4/6/2017	AWD04536	US Agcy for International Dev.	Crawford,Brian	AWPI	3000000	50	\$1,500,000.00	CI - Ghana Sustainable Fisheries Management Project	1/1/2014	10/31/2019
10/18/2016	AWD05452	RI Coastal Res Mgt.Council	Crean,Teresa	AWPI	219890	18	\$39,580.20	CI - HUD III-Shoreline Change Special Area Management Plan (Beach SAMP): Coastal Parcel Data Set and Shoreline Change Mapping for CERl	10/1/2016	9/30/2017
9/23/2016	AWD05394	US Department of Agriculture	Cygler,Azure	WCPI	74946	33	\$24,732.18	CI - Exploring Northeastern Market Opportunities for Farmed Kelp (sea vegetables)	9/30/2016	9/29/2018
10/3/2016	AWD05531	US Agcy for International Dev.	Kent,Karen	WCPI	1375000	50	\$687,500.00	CI - GSO/CI Comfish Plus Project	10/1/2016	9/30/2018
3/31/2017	AWD05531	US Agcy for International Dev.	Kent,Karen	WCPI	1322744.84	50	\$661,372.42	CI - GSO/CI Comfish Plus Project	10/1/2016	9/30/2018
5/2/2017	AWD05931	The Cadmus Group, Inc.	Kent,Karen	AWPI	60234	50	\$30,117.00	CI - Environment Sector Review	4/18/2017	12/31/2017
7/12/2016	AWD04129	US Department of Agriculture	Kent,Karen L	AWPI	222689.27	90	\$200,420.34	CI- WEST AFRICA ANALYTICAL SUPPORT SERVICES AND EVALUATIONS FOR	3/1/2014	3/19/2019
2/16/2017	AWD04129	US Department of Agriculture	Kent,Karen L	AWPI	250000	90	\$225,000.00	CI- WEST AFRICA ANALYTICAL SUPPORT SERVICES AND EVALUATIONS FOR	3/1/2014	3/19/2019
10/18/2016	AWD05481	RI Coastal Res Mgt.Council	Mccann,Jennifer	AWPI	20000	100	\$20,000.00	CI - Update and Revision of the Metro Bay SAMP Documents and 1978 Energy Amendments	7/1/2016	7/30/2017
10/21/2016	AWD05464	US Dept of Interior	Mccann,Jennifer	AWPI	314300	23	\$72,289.00	CI - Identifying Indicators of Offshore Wind Benefits: An Analysis of the Effects of the Block Island Wind Farm on Rhode Island Recreation and Tourism Activities	9/21/2016	12/31/2018

## DIVISION OF RESEARCH AND ECONOMIC DEVELOPMENT

AWARD DATE	AWARD ID	SPONSOR	INVESTIGATOR	ROLE	AWARD AMT	CREDIT	PORTION AMT	TITLE	BEGIN DATE	END DATE
2/1/2017	AWD05763	Wildlife Fund Canada	Mccann,Jennifer	AWPI	14367	100	\$14,367.00	CI - Technical Support to the Bay of Fundy (BoF)	1/1/2017	2/10/2017
2/23/2017	AWD05481	RI Coastal Res Mgt.Council	Mccann,Jennifer	AWPI	2813	100	\$2,813.00	CI - Update and Revision of the Metro Bay SAMP Documents and 1978 Energy Amendments	7/1/2016	7/30/2017
11/2/2016	AWD05550	Western Indian Ocean Marine Science Asso	Ricci,Glenn	AWPI	161368.56	50	\$80,684.28	CI - Strengthening East Africa Marine Protected Areas--WIO State	10/1/2016	9/30/2018
10/4/2016	AWD04536	US Agcy for International Dev.	Robadue Jr,Donald	WCPI	2200000	50	\$1,100,000.00	CI - Ghana Sustainable Fisheries Management Project	1/1/2014	10/31/2019
4/6/2017	AWD04536	US Agcy for International Dev.	Robadue Jr,Donald	WCPI	3000000	50	\$1,500,000.00	CI - Ghana Sustainable Fisheries Management Project	1/1/2014	10/31/2019
8/15/2016	AWD04325	US Dept of Interior	Robadue Jr,Donald D	AWPI	49999.78	100	\$49,999.78	ci - Guidance for the National Park Service in Conducting Vulnerability assessments in the Northeast Region	7/30/2014	12/31/2018
11/7/2016	AWD05213	University of Connecticut STORRS	Rubinoff,Pamela	AWPI	16862	100	\$16,862.00	Island Storm and Sea Level Rise Preparedness	9/1/2015	8/31/2017
9/23/2016	AWD05394	US Department of Agriculture	Smythe,Tiffany	WCPI	74946	33	\$24,732.18	CI - Exploring Northeastern Market Opportunities for Farnamed Kelp (sea vegetables)	9/30/2016	9/29/2018
10/21/2016	AWD05464	US Dept of Interior	Smythe,Tiffany	WCPI	314300	23	\$72,289.00	CI - Identifying Indicators of Offshore Wind Benefits: An Analysis of the Effects of the Block Island Wind Farm on Rhode Island Recreation and Tourism Activities	9/21/2016	12/31/2018
10/3/2016	AWD05531	US Agcy for International Dev.	Tobey,James	AWPI	1375000	50	\$687,500.00	CI - GSO/CI Comfish Plus Project	10/1/2016	9/30/2018
12/21/2016	AWD05346	Mass Audubon	Tobey,James	AWPI	278076	60	\$166,845.60	CI - US EPA Region 1 Southeast New England Program for Coastal Watershed	10/1/2016	9/30/2019
3/31/2017	AWD05531	US Agcy for International Dev.	Tobey,James	AWPI	1322744.84	50	\$661,372.42	CI - GSO/CI Comfish Plus Project	10/1/2016	9/30/2018
11/2/2016	AWD05550	Western Indian Ocean Marine Science Asso	Torell,Elin	WCPI	161368.56	50	\$80,684.28	CI - Strengthening East Africa Marine Protected Areas--WIO State	10/1/2016	9/30/2018
3/23/2017	AWD05868	Seafood Industry Research Fund	Torell,Elin	AWPI	8359	100	\$8,359.00	Evaluating Strategies Used to Combat Child Labor and Trafficking in the Fisheries Sector in Ghana	1/1/2017	12/31/2017
5/2/2017	AWD05931	The Cadmus Group, Inc.	Torell,Elin	WCPI	60234	50	\$30,117.00	CI - Environment Sector Review	4/18/2017	12/31/2017



## DIVISION OF RESEARCH AND ECONOMIC DEVELOPMENT

AWARD DATE	AWARD ID	SPONSOR	INVESTIGATOR	ROLE	AWARD AMT	CREDIT	PORTION AMT	TITLE	BEGIN DATE	END DATE
1/18/2017	AWD04495	PACT	Torell,Elin C	AWPI	516908.83	100	\$516,908.83	CI- FISHERIES INTEGRATION OF SOCIETY AND HABITS FISH	9/10/2014	8/9/2019

### GSO Dean

**Total: \$6,000.00**

AWARD DATE	AWARD ID	SPONSOR	INVESTIGATOR	ROLE	AWARD AMT	CREDIT	PORTION AMT	TITLE	BEGIN DATE	END DATE
5/9/2017	AWD05981	The Nature Conservancy	Stevick,Rebecca	WCPI	12000	50	\$6,000.00	Effects of Estuarine Acidification on Adult Eastern Oyster Microbiomes and Health in Narragansett Bay	3/1/2017	12/31/2017

### GSO Facilities

**Total: \$2,200.00**

AWARD DATE	AWARD ID	SPONSOR	INVESTIGATOR	ROLE	AWARD AMT	CREDIT	PORTION AMT	TITLE	BEGIN DATE	END DATE
7/27/2016	AWD04094	US Dept of Commerce NOAA	Murray,Cynthia J	AWPI	2200	100	\$2,200.00	A Proposal for the Support of Continuing and New Activities of the National Sea Grant Library	3/1/2014	2/28/2018

### GSO Faculty

**Total: \$12,747,951.70**

AWARD DATE	AWARD ID	SPONSOR	INVESTIGATOR	ROLE	AWARD AMT	CREDIT	PORTION AMT	TITLE	BEGIN DATE	END DATE
9/12/2016	AWD04236	National Science Foundation	Alberts,Jonathan	AWPI	144970	50	\$72,485.00	UNIVERSIEY-NATIONAL OCEANOGRAPHIC LABORATORY SYSTEM	5/1/2014	4/30/2019
10/31/2016	AWD04236	National Science Foundation	Alberts,Jonathan	AWPI	978690	50	\$489,345.00	UNIVERSIEY-NATIONAL OCEANOGRAPHIC LABORATORY SYSTEM	5/1/2014	4/30/2019
4/26/2017	AWD04236	National Science Foundation	Alberts,Jonathan	AWPI	836568	50	\$418,284.00	UNIVERSIEY-NATIONAL OCEANOGRAPHIC LABORATORY SYSTEM	5/1/2014	4/30/2019

## DIVISION OF RESEARCH AND ECONOMIC DEVELOPMENT

AWARD DATE	AWARD ID	SPONSOR	INVESTIGATOR	ROLE	AWARD AMT	CREDIT	PORTION AMT	TITLE	BEGIN DATE	END DATE
2/15/2017	AWD04306	US of Office of Naval Research	Alberts,Jonathan C	AWPI	295756	50	\$147,878.00	University-National Oceanographic Laboratory System Reached \$ amt on N00014-14-1-0678 E.C. 9-7-16	5/15/2014	6/30/2019
2/22/2017	AWD04395	US Geological Survey	Alberts,Jonathan C	AWPI	32170	50	\$16,085.00	USGS Participation in UNOLS	8/15/2014	4/30/2018
7/19/2016	AWD05057	National Science Foundation	Campbell,Robert	AWPI	84712	100	\$84,712.00	CI - Collab. Research: Mechanisms Supporting Persistence of Benthic Biological Hotspots in the Pacific Arctic Region	8/1/2016	7/31/2019
10/20/2016	AWD04986	Woods Hole Group, Inc.	Campbell,Robert	AWPI	4000	100	\$4,000.00	CI - Formation, Extent and Fate of Phytoplankton Blooms in Changing Arctic Seasonal and Perennial Ice Coverage - A Study Combining Modeling, Field and Satellite Observations	3/11/2015	3/10/2017
10/27/2016	AWD05398	National Science Foundation	Campbell,Robert	AWPI	565065	100	\$565,065.00	CI - Collab. Research: The Importance of Shelf Break Upwelling to Upper Trophic Level Ecology in the Western Beaufort Sea	10/1/2016	9/30/2019
3/31/2017	AWD05365	National Science Foundation	Carey,Steven	AWPI	79532	100	\$79,532.00	Marine Geological-Samples Laboratory: Graduate School of Oceanography, University of Rhode Island (support of marine sample curation)	6/15/2016	5/31/2021
7/15/2016	AWD05285	DUKE UNIVERSITY	Coleman,Dwight	AWPI	35960	100	\$35,960.00	EAGER: Developing At-Sea & Telepresence-Led Deep-Submergence Science Leadership	6/15/2016	5/31/2017
7/21/2016	AWD05443	OCEAN EXPLORATION TRUST	Coleman,Dwight	AWPI	85000	100	\$85,000.00	OET Partnership with the URI Inner Space Center to Support Systematic Ocean Exploration - 2016-2017 Season	7/1/2016	6/30/2017
7/25/2016	AWD05401	Naval Undersea Warfare Center	Coleman,Dwight	AWPI	20000	100	\$20,000.00	NUWC Collaboration with the URI Inner Space Center for Educational Outreach	7/22/2016	7/21/2017
8/30/2016	AWD05119	National Science Foundation	Coleman,Dwight	WCPI	1702772	15	\$255,415.80	CI - Northwest Passage Project	7/1/2016	8/31/2019
11/4/2016	AWD05658	University of California, San Diego	Coleman,Dwight	AWPI	31771.84	100	\$31,771.84	Sally Ride Telepresence Support	11/14/2016	4/30/2017
2/23/2017	AWD04869	OCEAN EXPLORATION TRUST	Coleman,Dwight	AWPI	65500	100	\$65,500.00	OET Partnership with the URI Inner Space Center to Support Systematic Ocean Exploration 2015-2016 Season	7/1/2015	6/30/2017
3/2/2017	AWD05830	OCEAN EXPLORATION TRUST	Coleman,Dwight	AWPI	65500	100	\$65,500.00	OET Partnership with the URI Inner Space Center to Support Systematic Ocean Exploration - 2016-2017 Season	1/1/2017	6/30/2017
3/9/2017	AWD05838	US Dept of Commerce NOAA	Coleman,Dwight	AWPI	75000	100	\$75,000.00	NOAA-OER Partnership with the URI Inner Space Center to Support Ocean Exploration 2015-2016 Season - Quotation	2/10/2017	6/30/2017
4/27/2017	AWD05969	OCEAN EXPLORATION TRUST	Coleman,Dwight	AWPI	29731	100	\$29,731.00	Production Engineering Support for Nautilus Live - the 2017 Season	4/30/2017	11/25/2017

## DIVISION OF RESEARCH AND ECONOMIC DEVELOPMENT

AWARD DATE	AWARD ID	SPONSOR	INVESTIGATOR	ROLE	AWARD AMT	CREDIT	PORTION AMT	TITLE	BEGIN DATE	END DATE
7/12/2016	AWD05127	US Dept of Commerce NOAA	Collie,Jeremy	AWPI	155026	100	\$155,026.00	The Other (EBFM: " Designing Ecosystem-Based Marketing Strategies to Complement Ecosystem-Based Fisheries Management	9/1/2016	8/31/2018
11/18/2016	AWD05692	RI Dept of Environ Magt	Collie,Jeremy	AWPI	78639	100	\$78,639.00	PILOT STUDY: BIOLOGICAL AND FISHERY CHARACTERISTICS OF THE JONAH CRAB	3/1/2016	8/31/2018
8/2/2016	AWD05195	National Science Foundation	Cormier,Marie H	AWPI	390820	65	\$254,033.00	Collab. Research: Interactions between Transpressional Structures at the N. American-Caribbean Plate Boundary: Geophysical Imaging Beneath Lake Azuei, Haiti	11/1/2016	10/31/2019
7/22/2016	AWD05220	University of Southern California	D'Hondt,Steven	AWPI	110865	100	\$110,865.00	C-DEBI Postdoctoral Fellow: Discrimination of Detrital Genes from Marine Sediments	1/1/2017	12/31/2017
9/19/2016	AWD05287	National Science Foundation	D'Hondt,Steven	AWPI	738837	45	\$332,476.65	An Autonomous Ocean Profiling and Water Sampling System for 0 to 11 km of Water Depth	7/1/2016	8/31/2018
9/12/2016	AWD04236	National Science Foundation	Desilva,Annette	WCPI	144970	50	\$72,485.00	UNIVERSIEY-NATIONAL OCEANOGRAPHIC LABORATORY SYSTEM	5/1/2014	4/30/2019
10/31/2016	AWD04236	National Science Foundation	Desilva,Annette	WCPI	978690	50	\$489,345.00	UNIVERSIEY-NATIONAL OCEANOGRAPHIC LABORATORY SYSTEM	5/1/2014	4/30/2019
4/26/2017	AWD04236	National Science Foundation	Desilva,Annette	WCPI	836568	50	\$418,284.00	UNIVERSIEY-NATIONAL OCEANOGRAPHIC LABORATORY SYSTEM	5/1/2014	4/30/2019
2/15/2017	AWD04306	US of Office of Naval Research	Desilva,Annette M	WCPI	295756	50	\$147,878.00	University-National Oceanographic Laboratory System Reached \$ amt on N00014-14-1-0678 E.C. 9-7-16	5/15/2014	6/30/2019
2/22/2017	AWD04395	US Geological Survey	Desilva,Annette M	WCPI	32170	50	\$16,085.00	USGS Participation in UNOLS	8/15/2014	4/30/2018
8/2/2016	AWD04733	National Science Foundation	Donohue,Kathleen	WCPI	68886	50	\$34,443.00	Collab. Research: The Oleander Project High Resolution Observations of the Dynamic Ocean Between New Jersey and Bermuda	9/15/2015	8/31/2020
9/6/2016	AWD04718	National Science Foundation	Donohue,Kathleen	WCPI	137727	40	\$55,090.80	REU Site: SURFO-Summer Undergraduate Research Fellowships in Oceanography	3/15/2015	2/28/2018
2/27/2017	AWD04955	Florida State University Research Founda	Donohue,Kathleen	AWPI	66480	100	\$66,480.00	Synthesis of Historical Observations using Novel Model Approaches to Improve Understanding and Predictability of Deep Gulf of Mexico Circulation	12/4/2015	12/3/2017
3/16/2017	AWD05867	National Science Foundation	Donohue,Kathleen	WCPI	99989	33	\$32,996.37	Quantification of Ocean Water Column Contributions to Bottom Pressure Offshore Cascadia Using CPIES	3/1/2017	2/28/2019
9/22/2016	AWD04497	US of Office of Naval Research	Ginis,Isaac	AWPI	46333.08	100	\$46,333.08	GFDN (Navy) Maintenance and Support: 3 year 2014-2017	9/1/2014	9/22/2017

## DIVISION OF RESEARCH AND ECONOMIC DEVELOPMENT

AWARD DATE	AWARD ID	SPONSOR	INVESTIGATOR	ROLE	AWARD AMT	CREDIT	PORTION AMT	TITLE	BEGIN DATE	END DATE
10/13/2016	AWD04989	University of North Carolina - CH	Ginis,Isaac	WCPI	436036	52	\$226,738.72	CI - Dept. of Homeland Security Coastal Resilience Center of Excellence Projects	1/1/2016	6/30/2017
3/3/2017	AWD04615	US of Office of Naval Research	Ginis,Isaac	AWPI	104058	100	\$104,058.00	Advancing Tropical Cyclone Models through Explicit Representation of Boundary Layer Roll Vortices	12/1/2015	12/31/2017
3/3/2017	AWD04615	US of Office of Naval Research	Ginis,Isaac	AWPI	29291	100	\$29,291.00	Advancing Tropical Cyclone Models through Explicit Representation of Boundary Layer Roll Vortices	12/1/2015	12/31/2017
10/18/2016	AWD05152	Lamont-Doherty Earth Observatory	Graham,Rebecca	AWPI	71637	100	\$71,637.00	Participation in IODP Expedition #361 - Southern African Climates	2/1/2016	2/28/2018
11/15/2016	AWD05152	Lamont-Doherty Earth Observatory	Graham,Rebecca	AWPI	18717	100	\$18,717.00	Participation in IODP Expedition #361 - Southern African Climates	2/1/2016	2/28/2018
5/15/2017	AWD05152	Lamont-Doherty Earth Observatory	Graham,Rebecca	AWPI	27900	100	\$27,900.00	Participation in IODP Expedition #361 - Southern African Climates	2/1/2016	2/28/2018
1/19/2017	AWD05555	Brown University	Heil Jr,Clifford	AWPI	167633	90	\$150,869.70	Testing New Methods to Assess the Environmental and Flora/Faunal Responses	9/1/2016	8/31/2017
7/21/2016	AWD04940	US Dept of Commerce NOAA	Kenney,Robert D	AWPI	99999	100	\$99,999.00	Maintain and Curate the North Atlantic Right Whale Sightings Database.	9/1/2015	8/31/2017
9/16/2016	AWD05292	National Science Foundation	Kincaid,Christopher	AWPI	357747	50	\$178,873.50	4D Physical Models of Migrating and Mid-Ocean Ridges: Implications for Shallow Mantle Flow, Melt Distribution and Seafloor topography	8/1/2016	8/31/2019
2/22/2017	AWD05324	US of Office of Naval Research	Kincaid,Christopher	WCPI	229562	10	\$22,956.20	Authentic Data and Visualization Experiences and Necessary Training (ADVENT): An Undergraduate Model for Recruiting Students to STEM Careers in the U.S. Navy	7/1/2016	6/30/2019
8/2/2016	AWD05195	National Science Foundation	King,John	WCPI	390820	35	\$136,787.00	Collab. Research: Interactions between Transpressional Structures at the N. American-Caribbean Plate Boundary: Geophysical Imaging Beneath Lake Azuei, Haiti	11/1/2016	10/31/2019
8/16/2016	AWD04946	RI Dept. of Transportation	King,John	WCPI	6640	33	\$2,191.20	Study of Scour at Rhode Island Bridges	1/1/2016	12/31/2017
8/31/2016	AWD04161	US Dept of Interior	King,John	AWPI	200000	67	\$134,000.00	CI IDENTIFICATION OF SAND/GRAVEL RESOURCES IN RHODE ISLAND WATERS	7/29/2014	7/31/2018
10/18/2016	AWD05452	RI Coastal Res Mgt.Council	King,John	WCPI	219890	37	\$81,359.30	CI - HUD III-Shoreline Change Special Area Management Plan (Beach SAMP): Coastal Parcel Data Set and Shoreline Change Mapping for CERL	10/1/2016	9/30/2017

## DIVISION OF RESEARCH AND ECONOMIC DEVELOPMENT

AWARD DATE	AWARD ID	SPONSOR	INVESTIGATOR	ROLE	AWARD AMT	CREDIT	PORTION AMT	TITLE	BEGIN DATE	END DATE
1/12/2017	AWD05712	National Science Foundation	King,John	WCPI	62009	25	\$15,502.25	RAPID: Lidar and Sonar Surveys of a Dune Reinforced with Geosynthetic Sand Containers Impacted by Tropical Storm Hermine	1/15/2017	12/31/2017
1/19/2017	AWD05555	Brown University	King,John	WCPI	167633	10	\$16,763.30	Testing New Methods to Assess the Environmental and Flora/Faunal Responses	9/1/2016	8/31/2017
3/22/2017	AWD04310	US Dept of Interior	King,John W	AWPI	153042.04	84	\$128,555.31	CI - Electromagnetic Field Impacts on Elasmobranch (sharks, rays, and skates) and American Lobster Movement and Migration from Direct Current Cables	9/24/2014	1/31/2018
4/28/2017	AWD04420	US Dept of Interior	King,John W	AWPI	24600	20	\$4,920.00	CI - Submerged Habitat Mapping at Northeast Region Coastal Parks: Coordination and Synthesis	8/4/2014	1/1/2018
4/28/2017	AWD04420	US Dept of Interior	LaFrance,Monique	WCPI	24600	80	\$19,680.00	CI - Submerged Habitat Mapping at Northeast Region Coastal Parks: Coordination and Synthesis	8/4/2014	1/1/2018
10/6/2016	AWD05580	Environment & Climate Change Canada	Lohmann,Rainer	AWPI	6453	100	\$6,453.00	Preparation and Analysis of Passive Samplers for Organic Contaminants in Lakes and Seawater	9/14/2016	1/15/2017
4/28/2017	AWD05549	Hudson River Foundation	Lohmann,Rainer	AWPI	16000	100	\$16,000.00	Currently and Recently-Used Persistent Bioaccumulative Toxic Contaminants in Sediment, Water and Biota from the Passaic River	9/1/2016	5/1/2017
8/30/2016	AWD05119	National Science Foundation	Loose,Brice	WCPI	1702772	15	\$255,415.80	CI - Northwest Passage Project	7/1/2016	8/31/2019
5/23/2017	AWD03767	National Science Foundation	Loose,Brice	AWPI	64026	100	\$64,026.00	NOBLE GASES AND HELIUM ISOTOPES DURING OCEAN2ICE: PROCESSES AND VARIABILITY OF OCEAN HEAT TRANSPORT TOWARD ICE SHELVES IN THE AMUNDSEN SEA	9/15/2013	8/31/2018
9/6/2016	AWD04718	National Science Foundation	Maranda,Lucie	AWPI	137727	40	\$55,090.80	REU Site: SURFO-Summer Undergraduate Research Fellowships in Oceanography	3/15/2015	2/28/2018
2/22/2017	AWD05324	US of Office of Naval Research	Maranda,Lucie	WCPI	229562	40	\$91,824.80	Authentic Data and Visualization Experiences and Necessary Training (ADVENT): An Undergraduate Model for Recruiting Students to STEM Careers in the U.S. Navy	7/1/2016	6/30/2019
7/21/2016	AWD04719	NatAeronautics & Space Admin	Menden-Deuer,Susanne	AWPI	252523	100	\$252,523.00	CI - North Atlantic Plankton Population Dynamics: Quantifying the Predictive Values of Temperature, Light and Hyperspectral Ocean Color Data	7/1/2015	6/30/2017
10/20/2016	AWD05590	Massachusetts Institute of Technology	Mouw,Colleen B	AWPI	57846	100	\$57,846.00	Assessing Ecosystem Vulnerability to Climate Change through Optics, Imagery and Models	8/25/2016	8/24/2017
12/16/2016	AWD05677	National Science Foundation	Mouw,Colleen B	AWPI	29511	100	\$29,511.00	Collab. Research: Continuation and Enhancement of MPOWIR	12/15/2016	3/31/2018

## DIVISION OF RESEARCH AND ECONOMIC DEVELOPMENT

AWARD DATE	AWARD ID	SPONSOR	INVESTIGATOR	ROLE	AWARD AMT	CREDIT	PORTION AMT	TITLE	BEGIN DATE	END DATE
2/7/2017	AWD05686	NatAeronautics & Space Admin	Mouw, Colleen B	AWPI	123945	100	\$123,945.00	CI - Parameterizing Spectral Characteristics of Optically Active Constituents in Inland Water for Improved Satellite Retrievals	1/12/2017	1/11/2018
3/30/2017	AWD05862	Massachusetts Institute of Technology	Mouw, Colleen B	AWPI	20950	100	\$20,950.00	Interpreting Geological Variability Using Remotely Observed Optical Properties and Ocean Models	10/22/2016	11/14/2017
5/18/2017	AWD05686	NatAeronautics & Space Admin	Mouw, Colleen B	AWPI	86835	100	\$86,835.00	CI - Parameterizing Spectral Characteristics of Optically Active Constituents in Inland Water for Improved Satellite Retrievals	1/12/2017	12/31/2018
12/12/2016	AWD05643	National Science Foundation	Omand, Melissa	AWPI	59710	100	\$59,710.00	Collab. Research: Particle-Specific DNA Sequencing to Directly Observe Ecological Mechanisms of the Biological Pump	11/1/2016	11/30/2018
1/26/2017	AWD05524	National Science Foundation	Omand, Melissa	WCPI	318001	50	\$159,000.50	Collab. Research: Orientation of Elongate Diatoms as a Strategy for Light Harvesting	4/1/2017	3/31/2020
3/27/2017	AWD05322	Woods Hole Ocean Institution	Omand, Melissa	AWPI	20118	100	\$20,118.00	Modeling Studies for EXPORTS in a Dynamic Ocean Environment	8/25/2016	8/24/2017
8/5/2016	AWD05354	NERACOOS	Oviatt, Candace	WCPI	59730	50	\$29,865.00	CI - Data Transfer to NERACOOS from NBFSMN Stations Operated by URI/GSO	6/1/2016	5/31/2017
9/1/2016	AWD05496	Commonwealth of Massachusetts	Oviatt, Candace	WCPI	61331	50	\$30,665.50	CI - Expansion of the Narragansett Bay Fixed Site Monitoring Network in Mt. Hope Bay	8/25/2016	6/30/2017
1/17/2017	AWD03084	RI Dept of Environ Magt	Oviatt, Candace A	AWPI	280620	100	\$280,620.00	Technical Support of the Fixed-Site Monitoring Network in Narragansett	11/1/2010	12/31/2017
9/2/2016	AWD05326	National Science Foundation	Pockalny, Robert	AWPI	19709	100	\$19,709.00	Collab. Research: A Marine Geology and Geophysics Training Cruise Onboard the R/V Sikuliaq for Potential Chief Scientists	9/1/2016	8/31/2017
9/16/2016	AWD05292	National Science Foundation	Pockalny, Robert	WCPI	357747	50	\$178,873.50	4D Physical Models of Migrating and Mid-Ocean Ridges: Implications for Shallow Mantle Flow, Melt Distribution and Seafloor topography	8/1/2016	8/31/2019
9/19/2016	AWD05287	National Science Foundation	Pockalny, Robert	WCPI	738837	10	\$73,883.70	An Autonomous Ocean Profiling and Water Sampling System for 0 to 11 km of Water Depth	7/1/2016	8/31/2018
2/22/2017	AWD05324	US of Office of Naval Research	Pockalny, Robert	AWPI	229562	50	\$114,781.00	Authentic Data and Visualization Experiences and Necessary Training (ADVENT): An Undergraduate Model for Recruiting Students to STEM Careers in the U.S. Navy	7/1/2016	6/30/2019
1/26/2017	AWD05524	National Science Foundation	Rines, Jan E	AWPI	318001	50	\$159,000.50	Collab. Research: Orientation of Elongate Diatoms as a Strategy for Light Harvesting	4/1/2017	3/31/2020
8/19/2016	AWD05328	National Science Foundation	Roman, Christopher	AWPI	213493	100	\$213,493.00	Collab. Research: Quantifying the Biological, Chemical, and Physical Linkages Between Chemosynthetic Communities and the Surrounding Deep Sea	10/1/2016	9/30/2019

## DIVISION OF RESEARCH AND ECONOMIC DEVELOPMENT

AWARD DATE	AWARD ID	SPONSOR	INVESTIGATOR	ROLE	AWARD AMT	CREDIT	PORTION AMT	TITLE	BEGIN DATE	END DATE
9/19/2016	AWD05287	National Science Foundation	Roman,Christopher	WCPI	738837	45	\$332,476.65	An Autonomous Ocean Profiling and Water Sampling System for 0 to 11 km of Water Depth	7/1/2016	8/31/2018
11/16/2016	AWD05597	OCEAN EXPLORATION TRUST	Roman,Christopher	AWPI	34537	100	\$34,537.00	High Resolution Imaging System Development and Data processing for the E/V Nautilus	10/1/2016	12/31/2016
1/31/2017	AWD05758	OCEAN EXPLORATION TRUST	Roman,Christopher	AWPI	23267	100	\$23,267.00	Development of the Bathymetric and Visual Data Processing pipeline for the Hercules ROV	1/1/2017	5/31/2017
4/28/2017	AWD05898	US of Office of Naval Research	Roman,Christopher	AWPI	282089	100	\$282,089.00	High Resolution Optical Imaging System Development and Testing of Shallow Water Lagrangian Floats in a Riverine Salt Wedge	5/1/2017	4/30/2021
5/23/2017	AWD05953	National Academy of Sciences	Roman,Christopher	WCPI	50000	50	\$25,000.00	CI - Sonifications of Oxygen and Temperature Data in the Ocean: Creating a "Data Stethoscope" to Detect the Ocean's Vital Signs	5/15/2017	7/31/2018
8/2/2016	AWD04733	National Science Foundation	Rossby,Hans T	AWPI	68886	50	\$34,443.00	Collab. Research: The Oleander Project High Resolution Observations of the Dynamic Ocean Between New Jersey and Bermuda	9/15/2015	8/31/2020
5/14/2017	AWD05526	National Science Foundation	Rossby,Hans T	AWPI	138322	100	\$138,322.00	Collab. Research: The Norrona Project: An International Collaboration for Sustained Studies of the Meridional Overturning Circulation between Denmark, the Faroes and Iceland	5/15/2017	4/30/2019
9/1/2016	AWD05333	National Science Foundation	Rynearson,Tatiana	AWPI	642473	100	\$642,473.00	CI - Dimensions: Collab. Research: Genetic, Functional and Phylogenetic Diversity Determines Marine Phytoplankton Community Responses to Changing Temperature and Nutrients	10/1/2016	9/30/2020
8/30/2016	AWD05119	National Science Foundation	Scowcroft,Gail	AWPI	1702772	70	\$1,191,940.40	CI - Northwest Passage Project	7/1/2016	8/31/2019
12/12/2016	AWD05136	US of Office of Naval Research	Scowcroft,Gail	AWPI	100000	100	\$100,000.00	Discovery of Sound in the Sea	1/1/2016	12/31/2017
2/20/2017	AWD05136	US of Office of Naval Research	Scowcroft,Gail	AWPI	100000	100	\$100,000.00	Discovery of Sound in the Sea	1/1/2016	12/31/2017
9/6/2016	AWD04718	National Science Foundation	Smith,David	WCPI	137727	20	\$27,545.40	REU Site: SURFO-Summer Undergraduate Research Fellowships in Oceanography	3/15/2015	2/28/2018
8/5/2016	AWD05354	NERACOOS	Stoffel,Heather	AWPI	59730	50	\$29,865.00	CI - Data Transfer to NERACOOS from NBFSMN Stations Operated by URI/GSO	6/1/2016	5/31/2017
9/1/2016	AWD05496	Commonwealth of Massachusetts	Stoffel,Heather	AWPI	61331	50	\$30,665.50	CI - Expansion of the Narragansett Bay Fixed Site Monitoring Network in Mt. Hope Bay	8/25/2016	6/30/2017

## DIVISION OF RESEARCH AND ECONOMIC DEVELOPMENT

AWARD DATE	AWARD ID	SPONSOR	INVESTIGATOR	ROLE	AWARD AMT	CREDIT	PORTION AMT	TITLE	BEGIN DATE	END DATE
8/5/2016	AWD05001	Rutgers University	Ullman,David	AWPI	15000	100	\$15,000.00	MARACOOS: Preparing for a Changing Mid-Atlantic	6/1/2016	5/31/2017
7/5/2016	AWD05438	KOREA INSTITUTE OF OCEAN SCIENCE & TECHN	Watts,D Randolph	AWPI	23264	100	\$23,264.00	Kuroshio Studies at the Korean Institute of Ocean Science and Technology (KIOST): Current Meter and Accessories	6/20/2016	5/20/2018
7/5/2016	AWD05439	KOREA INSTITUTE OF OCEAN SCIENCE & TECHN	Watts,D Randolph	AWPI	42457	100	\$42,457.00	Kuroshio Studies at the Korean Institute of Ocean Science and Technology (KIOST) Pressure-Recording Inverted Echo Sounder (C-PIES-Ready)	6/20/2016	5/20/2018
7/15/2016	AWD05442	University of Miami	Watts,D Randolph	AWPI	970	100	\$970.00	PIES Board SN222 Repair for University of Miami	5/30/2016	10/31/2016
8/16/2016	AWD05512	Second Institute of Oceanography, State	Watts,D Randolph	AWPI	11765	100	\$11,765.00	PIES Accessories for R.X. Zhao, SIO.L- Hangzhou	8/1/2016	7/31/2017
10/4/2016	AWD05579	University of Miami	Watts,D Randolph	AWPI	3478	100	\$3,478.00	AWD 05666 (0006101) has replaced this award... created under NOAA rather than Univ of Miami 11-2016	9/30/2016	3/31/2018
10/4/2016	AWD05666	US Dept of Commerce NOAA	Watts,D Randolph	AWPI	3478	100	\$3,478.00	PIES: RELEASE ACCESSORIES FOR CIMAS- UNIV OF MIAMI	9/30/2016	3/31/2018
10/31/2016	AWD05627	Massachusetts Institute of Technology	Watts,D Randolph	AWPI	476783	100	\$476,783.00	Equipment for Arctic Circulation Studies (SODA Project) - CPIES	10/1/2016	9/30/2019
11/14/2016	AWD05671	University of Gothenberg	Watts,D Randolph	AWPI	16800	100	\$16,800.00	Glacier-Melt Studies Using Four TPOPs	11/1/2016	10/31/2019
11/14/2016	AWD05670	University of Miami	Watts,D Randolph	AWPI	61140	100	\$61,140.00	Equipment for Agulhas Transport Study - 1 CPIES	11/1/2016	10/31/2019
12/5/2016	AWD05019	Massachusetts Institute of Technology	Watts,D Randolph	AWPI	47049	100	\$47,049.00	Investigating flow features near abrupt topography in the Mariana Basin: PIES for the FLEAT Program	10/1/2015	9/30/2017
1/3/2017	AWD05745	SEISMIC MARINE TECHNOLOGY LIMITED	Watts,D Randolph	AWPI	8000	100	\$8,000.00	Orientation and Guidance on C_PIES	10/1/2016	9/30/2019
1/3/2017	AWD05746	SEISMIC MARINE TECHNOLOGY LIMITED	Watts,D Randolph	AWPI	82970	100	\$82,970.00	Observing the North Equatorial Current Using 2 PIES	12/20/2016	9/19/2019
1/3/2017	AWD05031	SEISMIC MARINE TECHNOLOGY LIMITED	Watts,D Randolph	AWPI	1590	100	\$1,590.00	Kuroshio Offshore Studies Using 20 CPIES for Second Institute of Oceanography, Hangzhou	10/1/2015	9/30/2020



## DIVISION OF RESEARCH AND ECONOMIC DEVELOPMENT

AWARD DATE	AWARD ID	SPONSOR	INVESTIGATOR	ROLE	AWARD AMT	CREDIT	PORTION AMT	TITLE	BEGIN DATE	END DATE
1/18/2017	AWD05759	SEISMIC MARINE TECHNOLOGY LIMITED	Watts,D Randolph	AWPI	1856	100	\$1,856.00	PIES Parts for Dr. Yuan (IOCAS)	1/1/2017	12/31/2019
1/23/2017	AWD05627	Massachusetts Institute of Technology	Watts,D Randolph	AWPI	8967	100	\$8,967.00	Equipment for Arctic Circulation Studies (SODA Project) - CPIES	10/1/2016	9/30/2019
2/23/2017	AWD05819	University of Miami	Watts,D Randolph	AWPI	129105	100	\$129,105.00	Atlantic Meridional Overturning Studies - 3 Microcat-Ready PIES	2/15/2017	2/14/2020
3/16/2017	AWD05867	National Science Foundation	Watts,D Randolph	WCPI	99989	34	\$33,996.26	Quantification of Ocean Water Column Contributions to Bottom Pressure Offshore Cascadia Using CPIES	3/1/2017	2/28/2019
3/30/2017	AWD05900	Woods Hole Oce Institution	Watts,D Randolph	AWPI	6000	100	\$6,000.00	URI-Cruise Participation for Cape Hatteras Deployment	4/1/2017	12/31/2019
3/16/2017	AWD05867	National Science Foundation	Wei,Meng	AWPI	99989	33	\$32,996.37	Quantification of Ocean Water Column Contributions to Bottom Pressure Offshore Cascadia Using CPIES	3/1/2017	2/28/2019
5/23/2017	AWD05953	National Academy of Sciences	Wishner,Karen	AWPI	50000	50	\$25,000.00	CI - Sonifications of Oxygen and Temperature Data in the Ocean: Creating a "Data Stethoscope" to Detect the Ocean's Vital Signs	5/15/2017	7/31/2018

### GSO Marine Office

**Total: \$2,455,063.50**

AWARD DATE	AWARD ID	SPONSOR	INVESTIGATOR	ROLE	AWARD AMT	CREDIT	PORTION AMT	TITLE	BEGIN DATE	END DATE
7/5/2016	AWD05290	US of Office of Naval Research	Glennon,Thomas	AWPI	4775	50	\$2,387.50	Shiptime and Marine Technician Support for the RV Endeavor	6/1/2016	5/31/2017
7/29/2016	AWD05498	University of Florida	Glennon,Thomas	AWPI	100000	100	\$100,000.00	RV Endeavor Charter with the Florida Institute of Oceanography - cy 2017	1/1/2017	12/31/2017
4/12/2017	AWD05813	Woods Hole Oce Institution	Glennon,Thomas	AWPI	592940	50	\$296,470.00	Ship and Marine Technician Support for RV Endeavor - WHOI EN 590	1/21/2017	5/30/2017
5/17/2017	AWD05984	US of Office of Naval Research	Glennon,Thomas	AWPI	785305	100	\$785,305.00	ONR Ship Time and Marine Technician Support for the RV Endeavor - CY 2017	5/1/2017	4/30/2018
9/6/2016	AWD03430	National Science Foundation	Glennon,Thomas J	WCPI	72376	50	\$36,188.00	OCEANOGRAPHIC TECHNICAL SERVICES FOR R/V ENDEAVOR 2012	6/1/2012	5/31/2018

## DIVISION OF RESEARCH AND ECONOMIC DEVELOPMENT

AWARD DATE	AWARD ID	SPONSOR	INVESTIGATOR	ROLE	AWARD AMT	CREDIT	PORTION AMT	TITLE	BEGIN DATE	END DATE
3/15/2017	AWD03402	National Science Foundation	Glennon,Thomas J	AWPI	1234713	100	\$1,234,713.00	Endeavor Ship Operations 2012 - 2017	4/1/2012	3/31/2018

### GSO Marine Technicians

**Total: \$335,045.50**

AWARD DATE	AWARD ID	SPONSOR	INVESTIGATOR	ROLE	AWARD AMT	CREDIT	PORTION AMT	TITLE	BEGIN DATE	END DATE
7/5/2016	AWD05290	US of Office of Naval Research	Fanning III,William	WCPI	4775	50	\$2,387.50	Shiptime and Marine Technician Support for the RV Endeavor	6/1/2016	5/31/2017
4/12/2017	AWD05813	Woods Hole Oce Institution	Fanning III,William	OTH	592940	50	\$296,470.00	Ship and Marine Technician Support for RV Endeavor - WHOI EN 590	1/21/2017	5/30/2017
9/6/2016	AWD03430	National Science Foundation	Fanning III,William L	AWPI	72376	50	\$36,188.00	OCEANOGRAPHIC TECHNICAL SERVICES FOR R/V ENDEAVOR 2012	6/1/2012	5/31/2018

### GSO Office of Marine Programs

**Total: \$49,940.00**

AWARD DATE	AWARD ID	SPONSOR	INVESTIGATOR	ROLE	AWARD AMT	CREDIT	PORTION AMT	TITLE	BEGIN DATE	END DATE
9/6/2016	AWD03680	National Science Foundation	Scowcroft,Gail A	AWPI	49940	100	\$49,940.00	CLIMATE CHANGE EDUCATION PARTNERSHIP ALLIANCE: NATIONAL OFFICE	6/15/2013	5/31/2018

### GSO Research

**Total: \$25,481.64**

AWARD DATE	AWARD ID	SPONSOR	INVESTIGATOR	ROLE	AWARD AMT	CREDIT	PORTION AMT	TITLE	BEGIN DATE	END DATE
9/23/2016	AWD05394	US Department of Agriculture	Mccann,Jennifer	AWPI	74946	34	\$25,481.64	CI - Exploring Northeastern Market Opportunities for Farmed Kelp (sea vegetables)	9/30/2016	9/29/2018

## DIVISION OF RESEARCH AND ECONOMIC DEVELOPMENT

### GSO Rhode Island Sea Grant

**Total: \$1,259,187.00**

AWARD DATE	AWARD ID	SPONSOR	INVESTIGATOR	ROLE	AWARD AMT	CREDIT	PORTION AMT	TITLE	BEGIN DATE	END DATE
1/11/2017	AWD05305	US Dept of Commerce NOAA	Nixon,Dennis	AWPI	56500	100	\$56,500.00	2017 Knauss Marine Policy Fellow Emily Patrolia	11/30/2016	1/31/2018
4/7/2017	AWD05304	US Dept of Commerce NOAA	Nixon,Dennis	AWPI	56500	100	\$56,500.00	2017 Knauss Marine Policy Fellow John Ryan-Henry	11/3/2016	1/31/2018
5/31/2017	AWD05302	US Dept of Commerce NOAA	Nixon,Dennis	AWPI	56500	100	\$56,500.00	2017 Knauss Marine Policy Fellow Ali Mitchell	11/3/2016	1/31/2018
8/3/2016	AWD03971	US Dept of Commerce NOAA	Nixon,Dennis W	AWPI	50183	100	\$50,183.00	RHODE ISLAND SEA GRANT 2014-2018 OMNIBUS	9/1/2014	1/31/2018
2/16/2017	AWD03971	US Dept of Commerce NOAA	Nixon,Dennis W	AWPI	1039504	100	\$1,039,504.00	RHODE ISLAND SEA GRANT 2014-2018 OMNIBUS	9/1/2014	1/31/2018

# DIVISION OF RESEARCH AND ECONOMIC DEVELOPMENT

## Awards for College of Nursing

From: 7/1/2016 To: 5/31/2017

Investigator Award Total: \$655,277.37

### Dean Nursing

**Total: \$18,000.00**

AWARD DATE	AWARD ID	SPONSOR	INVESTIGATOR	ROLE	AWARD AMT	CREDIT	PORTION AMT	TITLE	BEGIN DATE	END DATE
1/6/2017	AWD05244	R.I. Department of Elderly Affairs	Burbank,Patricia	AWPI	18000	100	\$18,000.00	Building Long Term Sustainability in State Lifespan	9/1/2016	8/31/2017

### Nursing Instruction

**Total: \$637,277.37**

AWARD DATE	AWARD ID	SPONSOR	INVESTIGATOR	ROLE	AWARD AMT	CREDIT	PORTION AMT	TITLE	BEGIN DATE	END DATE
10/14/2016	AWD04052	RI Foundation	Dunphy,Lynne M	AWPI	50000	100	\$50,000.00	Developing RI Ph.D. Nurse Leaders to Transform Health Care	8/31/2014	8/31/2017
8/31/2016	AWD03563	US Dep of Health & Human Svcs	Erickson-Owens,Debra Ann	WCPI	39589	50	\$19,794.50	Effects of placental transfusion on early brain development	1/1/2016	12/31/2016
12/22/2016	AWD03563	US Dep of Health & Human Svcs	Erickson-Owens,Debra Ann	WCPI	386584	50	\$193,292.00	Effects of placental transfusion on early brain development	1/1/2017	12/31/2017
8/31/2016	AWD03563	US Dep of Health & Human Svcs	Mercer,Judith S	AWPI	39589	50	\$19,794.50	Effects of placental transfusion on early brain development	1/1/2016	12/31/2016
12/22/2016	AWD03563	US Dep of Health & Human Svcs	Mercer,Judith S	AWPI	386584	50	\$193,292.00	Effects of placental transfusion on early brain development	1/1/2017	12/31/2017
3/7/2017	AWD03609	Brown University	Sullivan,Mary C	AWPI	56616	20	\$11,323.20	Southern Rhode Island area health education center	9/1/2016	8/31/2017
10/5/2016	AWD04901	Brown University	Thompson,Marcella	AWPI	27910.37	100	\$27,910.37	Re-Use in Rhode Island: A State-Based Approach to Complex Exposures	4/1/2016	3/31/2017

## DIVISION OF RESEARCH AND ECONOMIC DEVELOPMENT

AWARD DATE	AWARD ID	SPONSOR	INVESTIGATOR	ROLE	AWARD AMT	CREDIT	PORTION AMT	TITLE	BEGIN DATE	END DATE
5/4/2017	AWD05539	Brown University	Thompson, Marcella	AWPI	76578	100	\$76,578.00	Community-Engaged Tribal Research to Assess Dietary Exposures to Mercury and PCBs	3/1/2017	4/30/2017
3/7/2017	AWD03609	Brown University	Walters, Delores M	WCPI	56616	80	\$45,292.80	Southern Rhode Island area health education center	9/1/2016	8/31/2017

# DIVISION OF RESEARCH AND ECONOMIC DEVELOPMENT

## Awards for College of Pharmacy

From: 7/1/2016 To: 5/31/2017

Investigator Award Total: \$2,071,220.35

### Biomedical & Pharm. Sciences

**Total: \$1,606,903.10**

AWARD DATE	AWARD ID	SPONSOR	INVESTIGATOR	ROLE	AWARD AMT	CREDIT	PORTION AMT	TITLE	BEGIN DATE	END DATE
10/17/2016	AWD05602	Bay State Medical Center	Akhlaghi,Fatemeh	AWPI	58130	100	\$58,130.00	Implementation to Motivate Physician Response to Opioid Dependence in HIV Settings	10/1/2015	3/31/2017
9/27/2016	AWD05577	University of Connecticut Avery Point	Chen,Xinyuan	AWPI	53284	100	\$53,284.00	A Peptide Nanoparticle Nicotine Vaccine	9/1/2016	8/31/2016
11/16/2016	AWD05668	Pfizer Inc	Deng,Ruitang	AWPI	78334	100	\$78,334.00	Interplay of Bile Acid and Estrogen Signaling in Liver Disorders	11/9/2016	11/30/2017
11/22/2016	AWD05682	Amag Pharmaceuticals	Deng,Ruitang	AWPI	75000	100	\$75,000.00	Interplay of Bile Acid and Estrogen Signaling in Liver Disorders	11/18/2016	11/17/2018
5/26/2017	AWD05774	Society of Toxicology	King,Roberta	AWPI	7606	100	\$7,606.00	2017 SOT Matching Funds for Summer Undergraduate Research in Toxicology	5/1/2017	8/31/2017
8/29/2016	AWD04659	University of Maryland	Rowley,David	AWPI	84215	34	\$28,633.10	Safe Feedstocks for Bivalve Aquaculture	9/1/2015	8/31/2017
3/23/2017	AWD05528	National Science Foundation	Rowley,David	AWPI	253318	100	\$253,318.00	Collab. Research: Building a Framework for the Role of Bacterial-Derived Chemical Signals in Mediating Phytoplankton Population Dynamics	4/1/2017	3/31/2020
2/17/2017	AWD02922	Federation of Quebec Maple Syrup Produce	Seeram,Navindra P	AWPI	300000	100	\$300,000.00	Routine analyses of samples to identify factors which contribute to variability of maple syrup (URI coded project E)	7/15/2013	12/31/2020
8/10/2016	AWD05490	National Institute of Health	Yan,Bingfang	AWPI	276300	100	\$276,300.00	Signaling of the Pregnane X Receptor	9/1/2016	8/31/2017
8/29/2016	AWD05575	National Institute of Health	Yan,Bingfang	AWPI	99999	100	\$99,999.00	Signaling of the Pregnane X Receptor Supplement	9/1/2016	8/31/2017
9/28/2016	AWD04314	National Institute of Health	Yan,Bingfang	AWPI	276300	100	\$276,300.00	Signaling of the Pregnane X Receptor During Endoplasmic Reticulum Stress	9/1/2014	8/31/2016

## DIVISION OF RESEARCH AND ECONOMIC DEVELOPMENT

AWARD DATE	AWARD ID	SPONSOR	INVESTIGATOR	ROLE	AWARD AMT	CREDIT	PORTION AMT	TITLE	BEGIN DATE	END DATE
9/28/2016	AWD04314	National Institute of Health	Yan,Bingfang	AWPI	99999	100	\$99,999.00	Signaling of the Pregnane X Receptor During Endoplasmic Reticulum Stress	9/1/2014	8/31/2016

### Crime Lab

**Total: \$31,094.25**

AWARD DATE	AWARD ID	SPONSOR	INVESTIGATOR	ROLE	AWARD AMT	CREDIT	PORTION AMT	TITLE	BEGIN DATE	END DATE
2/8/2017	AWD05738	RI Department of Public Safety	Hilliard,Dennis	AWPI	15000	100	\$15,000.00	Bryne/JAG Sub-Grant Laboratory Improvement FY2016	1/1/2017	12/31/2017
2/24/2017	AWD05772	RI Department of Public Safety	Hilliard,Dennis	AWPI	16094.25	100	\$16,094.25	Coverdell Crime Laboratory Improvement Grant FY16	1/1/2017	12/31/2017

### Pharmacy Practice

**Total: \$433,223.00**

AWARD DATE	AWARD ID	SPONSOR	INVESTIGATOR	ROLE	AWARD AMT	CREDIT	PORTION AMT	TITLE	BEGIN DATE	END DATE
8/15/2016	AWD04875	Boston University Medical Center	Bratberg,Jeffrey	AWPI	12106	100	\$12,106.00	Advancing Patient Safety Implementation through Pharmacy - Based Opioid Medication Use Reseach	8/1/2016	7/31/2017
11/28/2016	AWD05551	Harvard University	Buchanan,Ashley	AWPI	3838	100	\$3,838.00	A Comprehensive Translational Science Analytics Toolkit for the Global Health Agenda Today	9/1/2016	7/31/2017
11/29/2016	AWD05563	Harvard University	Buchanan,Ashley	AWPI	25298	100	\$25,298.00	New Methods for the Design and Evaluation of Large HIV Prevention Interventions	9/1/2016	5/31/2017
12/8/2016	AWD05551	Harvard University	Buchanan,Ashley	AWPI	27035	100	\$27,035.00	A Comprehensive Translational Science Analytics Toolkit for the Global Health Agenda Today	9/1/2016	8/31/2017
11/2/2016	AWD05561	RI Department of Corrections	Marcoux,Rita	AWPI	157444	50	\$78,722.00	Pharmacy Program Oversight/Utilization Review	1/1/2017	12/31/2017
11/2/2016	AWD05561	RI Department of	Szumita,Lisa B	WCPI	157444	50	\$78,722.00	Pharmacy Program Oversight/Utilization Review	1/1/2017	12/31/2017

## DIVISION OF RESEARCH AND ECONOMIC DEVELOPMENT

AWARD DATE	AWARD ID	SPONSOR	INVESTIGATOR	ROLE	AWARD AMT	CREDIT	PORTION AMT	TITLE	BEGIN DATE	END DATE
		Corrections								
11/4/2016	AWD04515	Brown University	Temkin,Cynthia	AWPI	197502	100	\$197,502.00	The Rhode Island Center for Clinical and Transitional Science	7/1/2016	4/30/2017
2/14/2017	AWD05534	American Assoc. of College of Pharmacy	Vyas,Ami	AWPI	10000	100	\$10,000.00	Trajectories of Psychotropic Polypharmacy Among Cancer Patients	1/1/2017	12/31/2017



# DIVISION OF RESEARCH AND ECONOMIC DEVELOPMENT

## Awards for Academic Health Collaborative

From: 7/1/2016 To: 5/31/2017

Investigator Award Total: \$1,408,568.66

### IIHI Administration

**Total: \$1,408,568.66**

AWARD DATE	AWARD ID	SPONSOR	INVESTIGATOR	ROLE	AWARD AMT	CREDIT	PORTION AMT	TITLE	BEGIN DATE	END DATE
10/13/2016	AWD05601	The Collaborative	Blissmer,Bryan	AWPI	5000	100	\$5,000.00	Potential Benefits and Structure of a State University Medicaid Partnership	10/1/2016	12/31/2016
10/25/2016	AWD05570	State of Rhode Island	Blissmer,Bryan	AWPI	233333.33	100	\$233,333.33	State Innovation Model (SIM) Test Grant Evaluation	10/15/2016	6/30/2017
4/27/2017	AWD05876	Exec.Office of Health and Human Services	Blissmer,Bryan	AWPI	936902	100	\$936,902.00	IIHI: Ryan White Fund: HIV Excellence in Analytics Team (HEAT)	3/23/2017	12/31/2018
5/17/2017	AWD05570	State of Rhode Island	Blissmer,Bryan	AWPI	233333.33	100	\$233,333.33	State Innovation Model (SIM) Test Grant Evaluation	10/15/2016	6/30/2018

# DIVISION OF RESEARCH AND ECONOMIC DEVELOPMENT

## Awards for University Library

From: 7/1/2016 To: 5/31/2017

Investigator Award Total: \$1,073,917.68

### DataSpark

**Total: \$1,073,917.68**

AWARD DATE	AWARD ID	SPONSOR	INVESTIGATOR	ROLE	AWARD AMT	CREDIT	PORTION AMT	TITLE	BEGIN DATE	END DATE
4/21/2017	AWD05962	Central Falls School Department	Pierson, Kimberly	AWPI	265747	100	\$265,747.00	Library DataSpark NIJ Central Falls 2017	7/1/2015	12/31/2017
5/12/2017	AWD05982	RI Dept of Labor & Training	Pierson, Kimberly	AWPI	541919	100	\$541,919.00	Library DataSpark, DLI WDQI, 2017	3/17/2016	6/30/2018
5/24/2017	AWD05989	RI Department of Education	Pierson, Kimberly	AWPI	3000.28	100	\$3,000.28	Library, DataSpark, RIDE LDS2, 2017	2/6/2017	6/30/2018
5/25/2017	AWD05990	RI Department of Education	Pierson, Kimberly	AWPI	144405	100	\$144,405.00	Library, DataSpark, RIDE InfoWorks, 2017	2/6/2017	6/30/2017
5/26/2017	AWD05959	University of Massachusetts Medical School	Pierson, Kimberly	AWPI	118846.4	100	\$118,846.40	Library, DataSpark, SIM, 2017	2/8/2017	6/30/2017

# DIVISION OF RESEARCH AND ECONOMIC DEVELOPMENT

## Awards for Research & Economic Development

From: 7/1/2016 To: 5/31/2017

Investigator Award Total: \$1,842,633.00

### Research

**Total: \$1,650,626.00**

AWARD DATE	AWARD ID	SPONSOR	INVESTIGATOR	ROLE	AWARD AMT	CREDIT	PORTION AMT	TITLE	BEGIN DATE	END DATE
7/21/2016	AWD03058	National Science Foundation	Bothun,Geoffrey	AWPI	1440481	100	\$1,440,481.00	Infrastructure to advance life sciences in the ocean state	9/1/2012	7/31/2017
3/1/2017	AWD05557	US Small Business Admin	Huttenhower,Edward	AWPI	210145	100	\$210,145.00	Rhode Island Small Business Development Center - 2017	1/1/2017	12/31/2017

### Transportation Center

**Total: \$192,007.00**

AWARD DATE	AWARD ID	SPONSOR	INVESTIGATOR	ROLE	AWARD AMT	CREDIT	PORTION AMT	TITLE	BEGIN DATE	END DATE
7/21/2016	AWD05444	Calstart	Lucht,Wendy	AWPI	10000	100	\$10,000.00	Multi-State ZEV Procurement Process	3/15/2016	3/14/2018
2/7/2017	AWD05720	Plug In America	Lucht,Wendy	AWPI	28000	100	\$28,000.00	URITC: Plug in America Showcase Events	10/1/2016	9/30/2018
2/15/2017	AWD05174	United States Dep. of Energy	Lucht,Wendy	AWPI	45000	100	\$45,000.00	Clean Cities Outreach Education and Performance	2/1/2016	1/31/2018
8/25/2016	AWD05532	RI Dept. of Transportation	Rosen,Deborah	AWPI	30384	100	\$30,384.00	The Summer Transportation Institute 2016	7/1/2016	8/31/2016
1/20/2017	AWD05760	RI Dept. of Transportation	Rosen,Deborah	AWPI	78623	100	\$78,623.00	URITC/RIDOT Joint Research 2017	1/1/2017	12/31/2017

# DIVISION OF RESEARCH AND ECONOMIC DEVELOPMENT

## Awards for Vice President Administration

From: 7/1/2016 To: 5/31/2017

Investigator Award Total: \$24,923.00

### Police

**Total: \$24,923.00**

AWARD DATE	AWARD ID	SPONSOR	INVESTIGATOR	ROLE	AWARD AMT	CREDIT	PORTION AMT	TITLE	BEGIN DATE	END DATE
9/16/2016	AWD05572	RI Dept. of Transportation	Ricci, Paul N	AWPI	24923	100	\$24,923.00	E-Citation and Race Data Collection	10/1/2015	9/30/2016