

2016

# Division of Research and Economic Development Monthly Report for December 2016

URI Division of Research and Economic Development

Follow this and additional works at: [http://digitalcommons.uri.edu/researchecondev\\_reports](http://digitalcommons.uri.edu/researchecondev_reports)

---

## Recommended Citation

URI Division of Research and Economic Development, "Division of Research and Economic Development Monthly Report for December 2016" (2016). *Reports (Research and Economic Development)*. Paper 99.  
[http://digitalcommons.uri.edu/researchecondev\\_reports/99](http://digitalcommons.uri.edu/researchecondev_reports/99)[http://digitalcommons.uri.edu/researchecondev\\_reports/99](http://digitalcommons.uri.edu/researchecondev_reports/99)

This Periodical is brought to you for free and open access by the Division of Research and Economic Development at DigitalCommons@URI. It has been accepted for inclusion in Reports (Research and Economic Development) by an authorized administrator of DigitalCommons@URI. For more information, please contact [digitalcommons@etal.uri.edu](mailto:digitalcommons@etal.uri.edu).

Table 1. FY17 Awards through the Division of Research and Economic Development including awards through URIRF as of December FY17

Month	FY13				FY14			
	Number		Amount Awarded		Number		Amount Awarded	
	Count	Cum. Ct.	Amount	Cum. Amt.	Count	Cum. Ct.	Amount	Cum. Amt.
July	18	18	\$2,130,245.92	\$2,130,245.92	39	39	\$4,139,716.95	\$4,139,716.95
August	51	69	\$13,973,655.37	\$16,103,901.29	50	89	\$10,961,168.50	\$15,100,885.45
September	27	96	\$3,729,908.56	\$19,833,809.85	44	133	\$13,495,443.00	\$28,596,328.45
October	39	135	\$6,553,741.92	\$26,387,551.77	30	163	\$4,306,251.98	\$32,902,580.43
November	24	159	\$3,306,500.92	\$29,694,052.69	16	179	\$3,117,236.86	\$36,019,817.29
December	18	177	\$2,790,458.11	\$32,484,510.80	29	208	\$2,366,159.91	\$38,385,977.20
January	36	213	\$4,699,661.52	\$37,184,172.32	30	238	\$3,780,011.56	\$42,165,988.76
February	43	256	\$6,131,201.28	\$43,315,373.60	30	268	\$2,076,599.68	\$44,242,588.44
March	36	292	\$6,280,723.57	\$49,596,097.17	29	297	\$4,062,350.95	\$48,304,939.39
April	22	314	\$1,799,922.54	\$51,396,019.71	28	325	\$4,427,811.05	\$52,732,750.44
May	30	344	\$5,597,725.78	\$56,993,745.49	37	362	\$3,839,315.32	\$56,572,065.76
June	50	394	\$19,534,036.04	\$76,527,781.53	34	396	\$12,209,552.37	\$68,781,618.13
<b>Total</b>	<b>394</b>	<b>394</b>	<b>\$76,527,781.53</b>	<b>\$76,527,781.53</b>	<b>396</b>	<b>396</b>	<b>\$68,781,618.13</b>	<b>\$68,781,618.13</b>

Month	FY15				FY16				FY17			
	Number		Amount Awarded		Number		Amount Awarded		Number		Amount Awarded	
	Count	Cum. Ct.	Amount	Cum. Amt.	Count	Cum. Ct.	Amount	Cum. Amt.	Count	Cum. Ct.	Amount	Cum. Amt.
July	56	56	\$9,320,986.14	\$9,320,986.14	37	37	\$8,259,292.12	\$8,259,292.12	36	36	\$4,008,618.27	\$4,008,618.27
August	44	100	\$12,358,916.05	\$21,679,902.19	50	87	\$11,559,380.86	\$19,818,672.98	53	89	\$8,235,001.58	\$12,243,619.85
September	54	154	\$9,752,946.59	\$31,432,848.78	47	134	\$15,419,750.42	\$35,238,423.40	32	121	\$4,388,368.24	\$16,631,988.09
October	40	194	\$10,524,688.48	\$41,957,537.26	29	163	\$5,505,924.11	\$40,744,347.51	45	166	\$10,495,024.28	\$27,127,012.37
November	33	227	\$4,659,283.60	\$46,616,820.86	20	183	\$1,782,290.00	\$42,526,637.51	29	195	\$1,964,267.24	\$29,091,279.61
December	23	250	\$4,928,269.75	\$51,545,090.61	23	206	\$5,157,323.68	\$47,683,961.19	20	215	\$2,401,656.00	\$31,492,935.61
January	22	272	\$2,793,419.35	\$54,338,509.96	18	224	\$2,301,715.00	\$49,985,676.19				
February	32	304	\$3,760,154.75	\$58,098,664.71	36	260	\$7,503,614.82	\$57,489,291.01				
March	26	330	\$4,144,522.17	\$62,243,186.88	28	288	\$3,653,643.41	\$61,142,934.42				
April	33	363	\$10,761,617.18	\$73,004,804.06	30	318	\$7,850,054.40	\$68,992,988.82				
May	33	396	\$5,594,823.50	\$78,599,627.56	38	356	\$8,421,608.95	\$77,414,597.77				
June	30	426	\$5,826,873.64	\$84,426,501.20	37	393	\$8,166,192.24	\$85,580,790.01				
<b>Total</b>	<b>426</b>	<b>426</b>	<b>\$84,426,501.20</b>	<b>\$84,426,501.20</b>	<b>393</b>	<b>393</b>	<b>\$85,580,790.01</b>	<b>\$85,580,790.01</b>	<b>215</b>	<b>215</b>	<b>\$31,492,935.61</b>	<b>\$31,492,935.61</b>

Fig 1a. FY17 Cumulative totals of numbers of awards through the Division of Research & Economic Development including awards through URIRF as of December FY17

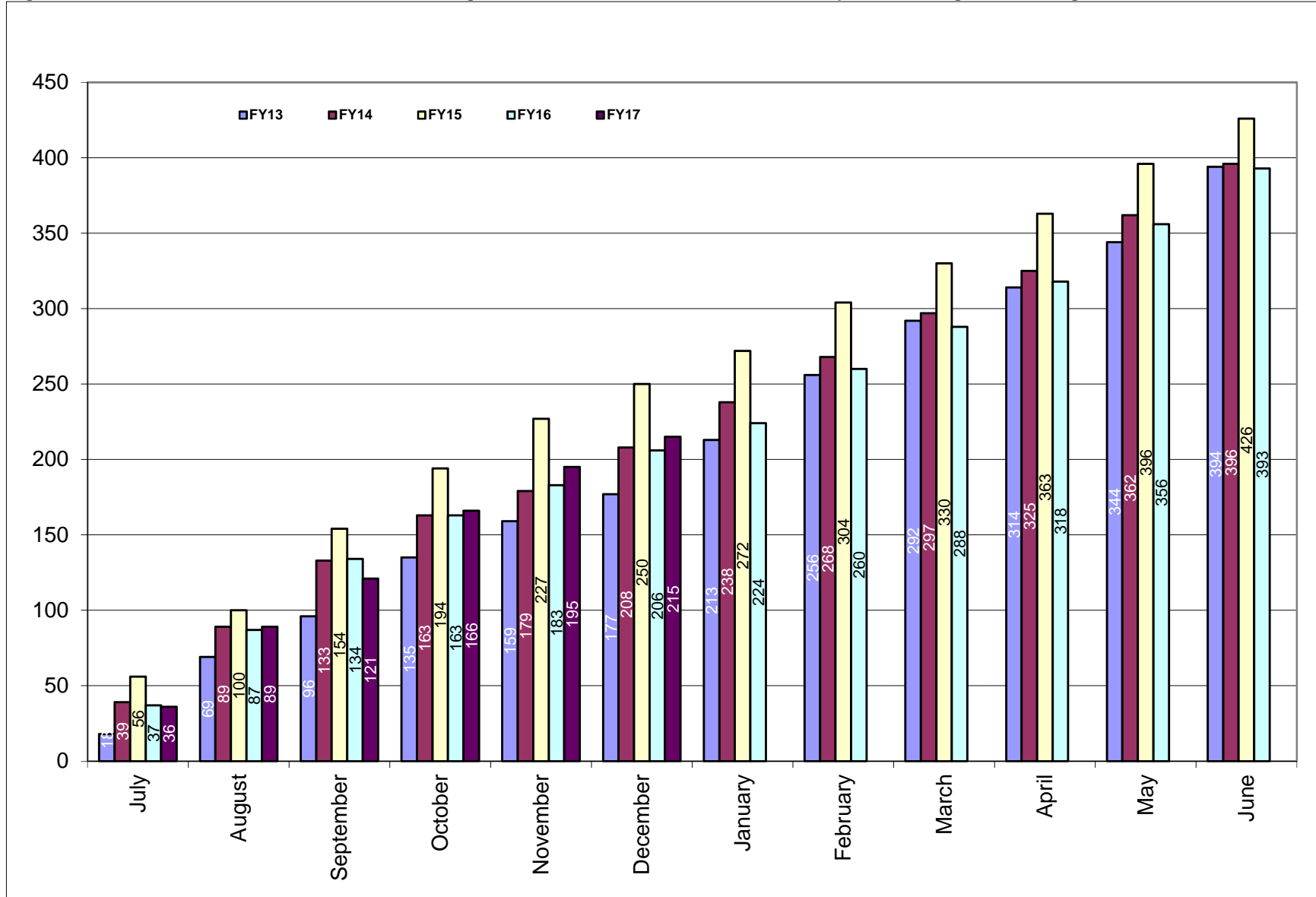
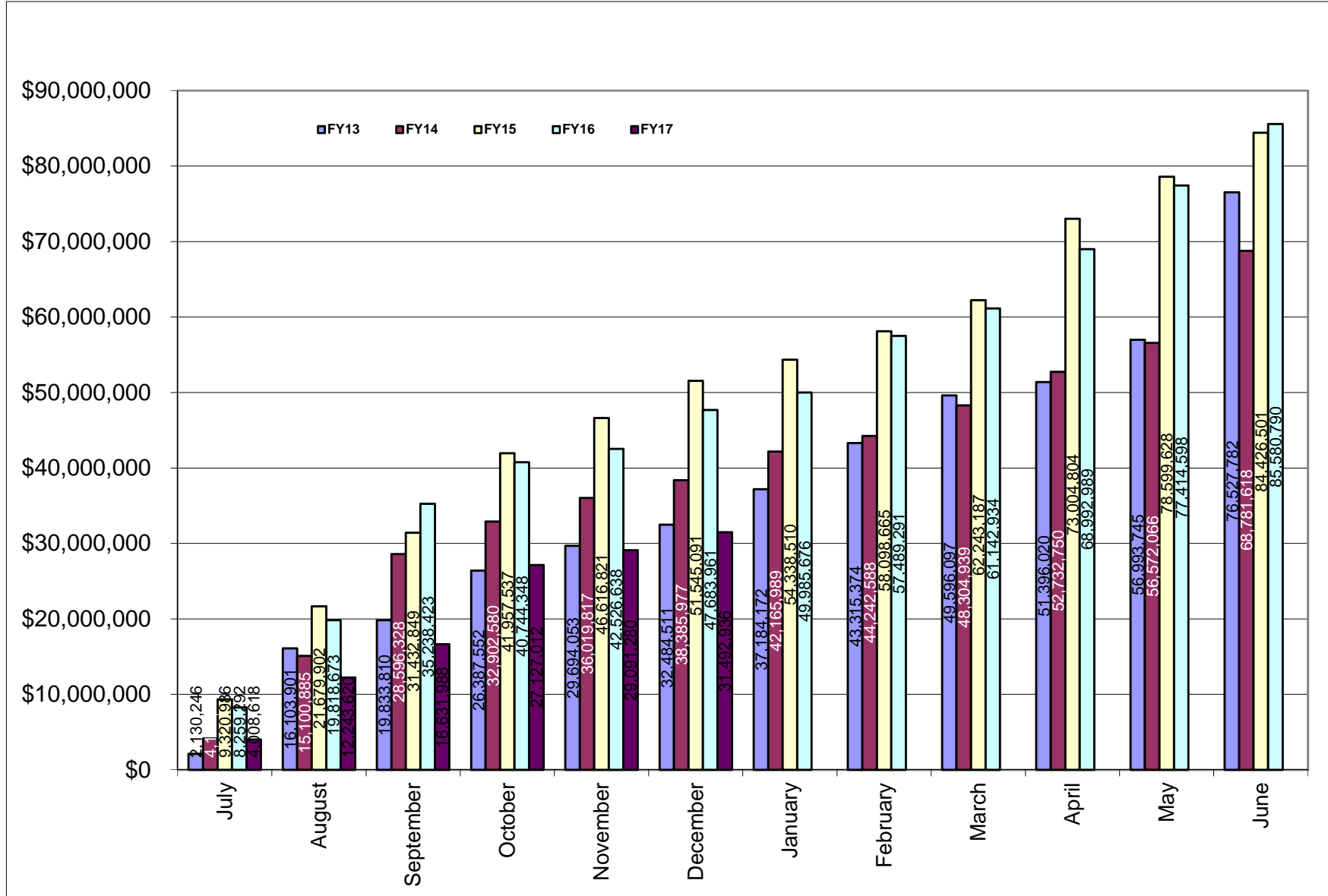


Fig 1b. Cumulative totals of awards received through the Division of Research & Economic Development including awards through URIRF as of December FY17



**Table 2. Summary of awards received by administrative and academic units FY13 through December FY17 YTD**

<b>Administrative</b>	<b><u>FY13</u></b>	<b><u>FY14</u></b>	<b><u>FY15</u></b>	<b><u>FY16</u></b>	<b><u>FY17</u></b>	<b><u>Totals</u></b>
PRESIDENT'S OFFICE	\$0.00	\$0.00	\$0.00	\$0.00	\$0.00	\$0.00
PROVOST	\$11,025.46	\$66,522.90	\$333,665.52	\$347,327.90	\$0.00	\$758,541.78
VP, ADMINISTRATION	\$486,099.64	\$934,258.37	\$12,176.00	\$0.00	\$24,923.00	\$1,457,457.01
VP, RESEARCH & ECON DEV	\$6,000,000.00	\$4,177,835.54	\$5,781,973.31	\$5,019,163.69	\$1,998,149.00	\$22,977,121.54
VP, STUDENT AFFAIRS	\$0.00	\$261,091.70	\$267,287.19	\$124,215.60	\$0.00	\$652,594.49
<b>Academic</b>						
ARTS & SCIENCES	\$6,936,683.83	\$4,245,460.88	\$6,966,881.21	\$5,807,093.79	\$2,967,533.24	\$26,923,652.95
BUSINESS ADMINISTRATION	\$30,264.83	\$72,332.00	\$255,549.40	\$367,079.80	\$0.00	\$725,226.03
COLLEGE OF EDU & PROF STUDIES	\$535,658.00	\$2,077,426.92	\$1,832,419.00	\$2,191,844.01	\$490,719.30	
CONTINUING EDUCATION	\$0.00	\$199,568.70	\$148,136.04	\$118,215.60	NA	\$465,920.34
ENGINEERING	\$5,160,510.74	\$3,487,206.08	\$6,367,872.33	\$8,940,566.89	\$2,608,458.33	\$26,564,614.37
ENVIRONMENT & LIFE SCIENCES	\$17,499,653.71	\$16,144,544.99	\$19,928,754.89	\$16,957,974.00	\$6,551,164.64	\$77,082,092.23
GRADUATE SCHOOL	\$922.00	\$0.00	\$0.00	\$0.00	\$0.00	\$922.00
HUMAN SCIENCE & SERVICES	\$232,908.00	\$899,862.05	\$858,426.62	\$1,147,091.45	NA	\$3,138,288.12
HEALTH SCIENCES	\$4,404,921.65	\$4,771,423.00	\$4,989,606.93	\$4,915,700.32	\$1,299,330.64	\$20,380,982.54
ACADEMIC HEALTH COLLABORATIVE					\$238,333.33	\$238,333.33
NURSING	\$1,038,977.00	\$1,298,944.60	\$682,403.25	\$1,807,216.30	\$504,083.37	\$5,331,624.52
OCEANOGRAPHY	\$28,261,624.70	\$22,981,661.90	\$25,356,628.31	\$31,099,397.41	\$13,341,037.62	\$121,040,349.94
PHARMACY	\$5,928,531.97	\$6,963,909.80	\$10,644,721.20	\$6,549,687.65	\$1,469,202.10	\$31,556,052.72
UNIVERSITY COLLEGE	\$0.00	\$199,568.70	\$0.00	\$188,215.60	\$0.00	\$387,784.30
<b>Totals</b>	<b>\$76,527,781.53</b>	<b>\$68,781,618.13</b>	<b>\$84,426,501.20</b>	<b>\$85,580,790.01</b>	<b>\$31,492,934.57</b>	<b>\$339,681,558.21</b>

NA - NOT APPLICABLE (Unit does not exist)

CANCER PREV RESEARCH CTR - Prior to FY17 was reported in Arts and Sciences

CENTER FOR HUMAN SERVICES - Prior to FY17 was reported in Human Science and Services

EDUCATION - Prior to FY17 was reported in Human Science and Services

HUMAN DEV/COUNSEL/FAM STUDIES - Prior to FY17 was reported in Human Science and Services

NUTRITION AND FOOD SCIENCES - Prior to FY17 was reported in Environment and Life Sciences

PHYSICAL THERAPY - Prior to FY17 was reported in Human Science and Services

PSYCHOLOGY - Prior to FY17 was reported in Arts and Sciences

**Table 2a. Awards received by departments within colleges FY13 through December FY17 YTD**

<u>College</u>	<u>FY13</u>	<u>FY14</u>	<u>FY15</u>	<u>FY16</u>	<u>FY17 YTD</u>	<u>Totals</u>
<b>Arts and Sciences</b>	<b>\$6,936,683.83</b>	<b>\$4,245,460.88</b>	<b>\$6,966,881.21</b>	<b>\$5,807,093.79</b>	<b>\$2,967,533.24</b>	<b>\$26,923,652.95</b>
ARCHEOLOGY AND APPLIED HISTORY	\$34,869.00	\$0.00	\$4,898.00	\$0.00	\$0.00	\$39,767.00
ART	\$0.00	\$0.00	\$0.00	\$0.00	\$0.00	\$0.00
CHEMISTRY	\$3,734,821.70	\$1,860,329.55	\$4,959,626.45	\$3,407,452.84	\$1,607,630.50	\$15,569,861.04
COMMUNICATION STUDIES	\$0.00	\$0.00	\$0.00	\$0.00	\$69,146.00	\$69,146.00
COMPUTER SCIENCE/STATISTICS	\$1,219,627.26	\$159,245.55	\$50,250.00	\$826,544.98	\$406,033.85	\$2,661,701.64
DEAN'S OFFICE	\$0.00	\$22,302.98	\$23,478.36	\$24,924.04	\$0.00	\$70,705.38
ECONOMICS	\$0.00	\$0.00	\$6,250.00	\$0.00	\$0.00	\$6,250.00
ENGLISH			\$475,980.00	\$0.00	\$25,000.00	\$500,980.00
FEINSTEIN HUNGER CTR(DEAN'S OFFICE)	\$850,654.00	\$797,488.00	\$555,216.00	\$570,233.00	\$0.00	\$2,773,591.00
HISTORY	\$145,150.00	\$248,515.00	\$60,480.00	\$1,982.00	\$211,921.00	\$668,048.00
INTERNATIONAL ENGINEERING PROG	\$0.00	\$0.00	\$0.00	\$0.00	\$0.00	\$0.00
LANGUAGES	\$249,610.00	\$419,870.00	\$377,995.80	\$15,000.00	\$568,773.04	\$1,631,248.84
LIBRARY AND INFORMATION STUDIES	\$0.00	\$50,000.00	\$0.00	\$0.00	\$0.00	\$50,000.00
MATHEMATICS	\$245,849.87	\$108,832.55	\$0.00	\$0.00	\$9,347.85	\$364,030.27
PHYSICS	\$403,189.00	\$504,034.50	\$219,162.00	\$237,748.00	\$0.00	\$1,364,133.50
POLITICAL SCIENCE			\$162,083.60	\$517,787.30	\$31,502.00	\$711,372.90
SOCIOLOGY/ANTHROPOLOGY	\$8,491.00	\$30,118.75	\$0.00	\$110,426.00	\$38,179.00	\$187,214.75
THEATRE	\$0.00	\$0.00	\$0.00	\$0.00	\$0.00	\$0.00
GENDER AND WOMEN'S STUDIES	\$0.00	\$0.00	\$0.00	\$0.00	\$0.00	\$0.00
WRITING AND RHETORIC	\$44,422.00	\$44,724.00	\$71,461.00	\$94,995.63	\$0.00	\$255,602.63
<b>Business Administration</b>	<b>\$30,264.83</b>	<b>\$72,332.00</b>	<b>\$255,549.40</b>	<b>\$367,079.80</b>	<b>\$0.00</b>	<b>\$725,226.03</b>
ACCOUNTING	\$0.00	\$0.00	\$0.00	\$0.00	\$0.00	\$0.00
DEAN'S OFFICE	\$0.00	\$0.00	\$234,712.00	\$331,719.40	\$0.00	\$566,431.40
FACULTY - INSTRUCTION	\$30,264.83	\$72,332.00	\$20,837.40	\$35,360.40	\$0.00	\$158,794.63
MANAGEMENT	\$0.00	\$0.00	\$0.00	\$0.00	\$0.00	\$0.00

<u>College</u>	<u>FY13</u>	<u>FY14</u>	<u>FY15</u>	<u>FY16</u>	<u>FY17 YTD</u>	<u>Totals</u>
<b>College of Education &amp; Prof. Studies</b>	<b>\$535,658.00</b>	<b>\$2,077,426.92</b>	<b>\$1,832,419.00</b>	<b>\$2,191,844.01</b>	<b>\$490,719.30</b>	<b>\$7,128,067.23</b>
CENTER FOR HUMAN SERVICES	\$0.00	\$524,558.00	\$237,256.00	\$237,256.00	\$237,256.00	\$1,236,326.00
EDUCATION	\$535,658.00	\$1,552,868.92	\$1,595,163.00	\$1,954,588.01	\$253,463.30	\$5,891,741.23
<hr/>						
<b>Engineering</b>	<b>\$5,160,510.74</b>	<b>\$3,487,206.08</b>	<b>\$6,367,872.33</b>	<b>\$8,940,566.89</b>	<b>\$2,608,458.33</b>	<b>\$26,564,614.37</b>
CHEMICAL ENGINEERING	\$630,281.44	\$1,017,782.78	\$1,147,777.99	\$638,045.12	\$429,591.37	\$3,863,478.70
CIVIL/ENVIRONMENTAL ENGINEERING	\$710,021.53	\$679,694.60	\$358,795.80	\$626,548.76	\$368,851.80	\$2,743,912.49
DEAN'S OFFICE	\$0.00	\$107,273.00	\$65,999.00	\$319,912.80	\$64,876.00	\$558,060.80
ELECTRICAL ENGINEERING	\$1,751,239.87	\$221,001.00	\$2,903,823.72	\$3,390,875.31	\$537,543.37	\$8,804,483.27
ENGINEERING COMPUTER CTR		\$42,572.00	\$0.00	\$0.00	\$0.00	\$42,572.00
INTERNATIOANAL ENG PROGRAM			\$17,692.80	\$15,000.00	\$0.00	\$32,692.80
MECHANICAL & INDUSTRIAL SYS EGR	\$1,442,279.23	\$350,143.00	\$586,746.91	\$1,993,862.41	\$187,856.00	\$4,560,887.55
OCEAN ENGINEERING	\$626,688.67	\$1,068,739.70	\$1,287,036.11	\$1,956,322.49	\$1,019,739.79	\$5,958,526.76
<hr/>						
<b>Environment and Life Sciences</b>	<b>\$17,499,653.71</b>	<b>\$16,144,544.99</b>	<b>\$19,928,754.89</b>	<b>\$16,957,974.00</b>	<b>\$6,551,164.64</b>	<b>\$77,082,092.23</b>
BIOLOGICAL SCIENCES	\$1,999,526.20	\$1,205,548.39	\$409,221.00	\$253,638.00	\$0.00	\$3,867,933.59
CELL AND MOLECULAR BIOLOGY	\$5,851,712.00	\$7,148,772.86	\$430,581.00	\$0.00	\$60,697.00	\$13,491,762.86
CELLS ACADEMIC UNIT 1			\$2,817,060.20	\$4,150,538.11	\$989,952.19	\$7,957,550.50
CELLS ACADEMIC UNIT 2			\$3,661,919.60	\$4,189,228.41	\$2,060,512.29	\$9,911,660.30
CELLS ACADEMIC UNIT 3		\$8,000.00	\$5,610,346.18	\$5,712,508.68	\$1,707,178.24	\$13,038,033.10
COMMUNITY PLANNING/AREA DEVEL	\$78,020.84	\$0.00	\$0.00	\$0.00	\$0.00	\$78,020.84
COOPERATIVE EXTENSION	\$1,007,000.18	\$303,615.00	\$117,786.70	\$8,250.00	\$0.00	\$1,436,651.88
DEAN'S OFFICE	\$3,088,215.00	\$1,671,668.43	\$802,988.20	\$1,639,130.50	\$1,671,936.00	\$8,873,938.13
ENV & NAT RESOURCE ECONOMICS	\$127,166.00	\$780,131.00	\$570,754.00	\$335,567.20	\$0.00	\$1,813,618.20
FISHERIES, ANIMAL & VET SCIENCE	\$1,450,456.60	\$958,878.97	\$569,213.69	\$176,211.10	\$58,288.92	\$3,213,049.28
GEOSCIENCES	\$1,314,837.49	\$566,452.87	\$1,116,544.24	\$113,544.00	\$0.00	\$3,111,378.60
MARINE AFFAIRS	\$123,508.00	\$3,837.00	\$0.00	\$0.00	\$0.00	\$127,345.00
NATURAL RESOURCES SCIENCE	\$1,459,896.00	\$3,014,274.22	\$3,753,730.08	\$354,263.00	\$2,600.00	\$8,584,763.30
PLANT SCIENCE	\$999,315.40	\$483,366.25	\$68,610.00	\$25,095.00	\$0.00	\$1,576,386.65

<u>College</u>	<u>FY13</u>	<u>FY14</u>	<u>FY15</u>	<u>FY16</u>	<u>FY17 YTD</u>	<u>Totals</u>
<b>Graduate School</b>	<b>\$922.00</b>	<b>\$0.00</b>	<b>\$0.00</b>	<b>\$0.00</b>	<b>\$0.00</b>	<b>\$922.00</b>
<b>Human Science and Services</b>	<b>\$232,908.00</b>	<b>\$899,862.05</b>	<b>\$858,426.62</b>	<b>\$1,147,091.45</b>	<b>NA*</b>	<b>\$3,138,288.12</b>
COMMUNICATIVE DISORDERS	\$0.00	\$0.00	\$0.00	\$24,250.00		\$24,250.00
DEAN'S OFFICE	\$232,908.00	\$588,623.00	\$319,709.00	\$0.00		\$1,141,240.00
GERONTOLOGY	\$0.00	\$267,077.10	\$537,787.40	\$1,100,341.45		\$1,905,205.95
KINGSTON CHILD DEVELOPMENT CTR		\$7,162.95	\$930.22	\$0.00		\$8,093.17
KINESIOLOGY	\$0.00	\$0.00	\$0.00	\$5,000.00		\$5,000.00
TEXTILES/FASHION MERCHAND/DESIGN	\$0.00	\$36,999.00	\$0.00	\$17,500.00		\$54,499.00
<b>College of Health Sciences</b>	<b>\$4,404,921.65</b>	<b>\$4,771,423.00</b>	<b>\$4,989,606.93</b>	<b>\$4,915,700.32</b>	<b>\$1,299,330.64</b>	<b>\$20,380,982.54</b>
CANCER PREV RESEARCH CTR	\$3,209,160.65	\$1,236,062.50	\$2,284,271.90	\$3,030,564.52	\$427,768.64	\$10,187,828.21
HUMAN DEV/COUNSEL/FAM STUDIES	\$92,068.00	\$116,886.00	\$109,355.00	\$226,093.95	\$74,950.00	\$619,352.95
NUTRITION AND FOOD SCIENCES	\$1,031,710.00	\$2,847,405.50	\$2,132,969.00	\$334,417.00	\$298,724.00	\$6,645,225.50
PHYSICAL THERAPY	\$0.00	\$341,442.00	\$87,892.00	\$840,254.65	\$497,888.00	\$1,767,476.65
PSYCHOLOGY	\$71,983.00	\$229,627.00	\$375,119.03	\$484,370.20	\$0.00	\$1,161,099.23
<b>ACADEMIC HEALTH COLLABORATIVE</b>					<b>\$238,333.33</b>	<b>\$238,333.33</b>
IIHI ADMINISTRATION					\$238,333.33	\$238,333.33
<b>Nursing</b>	<b>\$1,038,977.00</b>	<b>\$1,298,944.60</b>	<b>\$682,403.25</b>	<b>\$1,807,216.30</b>	<b>\$504,083.37</b>	<b>\$5,331,624.52</b>
<b>Oceanography</b>	<b>\$28,261,624.70</b>	<b>\$22,981,661.90</b>	<b>\$25,356,628.31</b>	<b>\$31,099,397.41</b>	<b>\$13,341,037.62</b>	<b>\$121,040,349.94</b>



<b>Pharmacy</b>	<b>\$5,928,531.97</b>	<b>\$6,963,909.80</b>	<b>\$10,644,721.20</b>	<b>\$6,549,687.65</b>	<b>\$1,469,202.10</b>	<b>\$31,556,052.72</b>
BIOMEDICAL & PHARMACEUTICAL SCI	\$5,029,978.72	\$5,544,086.00	\$6,272,151.75	\$5,773,671.13	\$1,045,979.10	\$23,665,866.70
CRIME LAB	\$27,172.25	\$33,092.00	\$30,770.75	\$14,333.75	\$0.00	\$105,368.75
DEAN'S OFFICE	\$0.00	\$0.00	\$0.00	\$0.00	\$0.00	\$0.00
ELDERLY MEDICATION	\$0.00	\$0.00	\$0.00	\$0.00	\$0.00	\$0.00
LIVING RITE/HEALTH POLICY	\$0.00	\$811,359.00	\$2,988,425.40	\$0.00	\$0.00	\$3,799,784.40
PHARMACY PRACTICE	\$871,381.00	\$575,372.80	\$1,353,373.30	\$761,682.77	\$423,223.00	\$3,985,032.87

<u>College</u>	<u>FY13</u>	<u>FY14</u>	<u>FY15</u>	<u>FY16</u>	<u>FY17 YTD</u>	<u>Totals</u>
<b>University College</b>	<b>\$0.00</b>	<b>\$199,568.70</b>	<b>\$0.00</b>	<b>\$188,215.60</b>	<b>\$0.00</b>	<b>\$387,784.30</b>

NA - NOT APPLICABLE (Unit does not exist)

CANCER PREV RESEARCH CTR - Prior to FY17 was reported in Arts and Sciences

CENTER FOR HUMAN SERVICES - Prior to FY17 was reported in Human Science and Services

EDUCATION - Prior to FY17 was reported in Human Science and Services

HUMAN DEV/COUNSEL/FAM STUDIES - Prior to FY17 was reported in Human Science and Services

NUTRITION AND FOOD SCIENCES - Prior to FY17 was reported in Environment and Life Sciences

PHYSICAL THERAPY - Prior to FY17 was reported in Human Science and Services

PSYCHOLOGY - Prior to FY17 was reported in Arts and Sciences

**Table 2b. Awards received by units within administrative divisions FY13 through December FY17 YTD**

<u>Administrative Unit</u>	<u>FY13</u>	<u>FY14</u>	<u>FY15</u>	<u>FY16 YTD</u>	<u>FY17 YTD</u>	<u>Totals</u>
<b>President's Office</b>	<b>\$0.00</b>	<b>\$0.00</b>	<b>\$0.00</b>	<b>\$0.00</b>	<b>\$0.00</b>	<b>\$0.00</b>
<b>Provost</b>	<b>\$11,025.46</b>	<b>\$66,522.90</b>	<b>\$333,665.52</b>	<b>\$347,327.90</b>	<b>\$0.00</b>	<b>\$758,541.78</b>
ADVANCE OFFICE	\$0.00	\$0.00	\$0.00	\$0.00	\$0.00	\$0.00
LABOR RESEARCH CENTER	\$11,025.46	\$0.00	\$143,874.60	\$243,922.70	\$0.00	\$398,822.76
NETWORK AND TELECOM SERVICES	\$0.00	\$0.00	\$0.00	\$0.00	\$0.00	\$0.00
PROVOST	\$0.00	\$66,522.90	\$189,790.92	\$103,405.20	\$0.00	\$359,719.02
<b>VP, Administration</b>	<b>\$486,099.64</b>	<b>\$934,258.37</b>	<b>\$12,176.00</b>	<b>\$0.00</b>	<b>\$24,923.00</b>	<b>\$24,124.00</b>
POLICE					\$24,923.00	\$24,923.00
TRANSPORTATION CENTER	\$474,151.64	\$934,258.37	NA	NA	NA	\$1,408,410.01
VICE PRESIDENT FOR ADMINISTRATION	\$11,948.00	\$0.00	\$12,176.00	\$0.00	\$0.00	\$24,124.00
<b>VP, Research &amp; Economic Development</b>	<b>\$6,000,000.00</b>	<b>\$4,177,835.54</b>	<b>\$5,781,973.31</b>	<b>\$5,019,163.69</b>	<b>\$1,998,149.00</b>	<b>\$13,134,913.54</b>
SMALL BUSINESS DEVELOPMENT CTR		\$172,400.00	\$1,090,101.00	\$650,000.00	\$0.00	\$1,912,501.00
VICE PRESIDENT FOR RESEARCH		\$4,005,435.54	\$4,011,596.00	\$0.00	\$1,440,481.00	\$9,457,512.54
TRANSPORTATION CENTER			\$680,276.31	\$1,044,239.69	\$40,384.00	\$1,764,900.00
URI RESEARCH FOUNDATION				\$3,324,924.00	\$517,284.00	\$3,842,208.00
<b>VP, Student Affairs</b>	<b>\$0.00</b>	<b>\$261,091.70</b>	<b>\$267,287.19</b>	<b>\$124,215.60</b>	<b>\$0.00</b>	<b>\$652,594.49</b>
STUDENT LIFE	\$0.00	\$61,523.00	\$0.00	\$0.00	\$0.00	\$61,523.00
TALENT DEVELOPMENT	\$0.00	\$199,568.70	\$142,343.19	\$118,215.60	\$0.00	\$460,127.49
VICE PRESIDENT STUDENT AFFAIRS			\$124,944.00	\$0.00	\$0.00	\$124,944.00
WOMENS CENTER				\$6,000.00	\$0.00	\$6,000.00

NA - Not Applicable (unit did not exist or was in another division)

## DIVISION OF RESEARCH AND ECONOMIC DEVELOPMENT

### Awards for College of Arts & Sciences

From: 7/1/2016 To: 12/31/2016

Investigator Award Total: \$2,967,533.24

#### Chemistry

AWARD DATE	AWARD ID	SPONSOR	INVESTIGATOR	ROLE	AWARD AMT	CREDIT	PORTION AMT	TITLE	BEGIN DATE	END DATE
8/30/2016	AWD05040	National Science Foundation	Deboef,Brenton	AWPI	150000	100	\$150,000.00	New Oxidative C-H Functionalization Reactions	9/1/2016	8/31/2019
9/5/2016	AWD05040	National Science Foundation	Deboef,Brenton	AWPI	210000	100	\$210,000.00	New Oxidative C-H Functionalization Reactions	9/1/2016	8/31/2019
12/22/2016	AWD03286	Brown University	Euler,William B	WCPI	686398	25	\$171,599.50	Fundamental Investigations of Damage Mechanisms	9/15/2011	9/14/2017
8/4/2016	AWD05329	ADOX Technologies - Intl. Dioxide, Inc	Levine,Mindy	WCPI	7018	50	\$3,509.00	NMR Study of ClO2 / Alpha-Cyclodextrin Complexation	5/31/2016	6/30/2016
12/22/2016	AWD03286	Brown University	Lucht,Brett L	AWPI	686398	50	\$343,199.00	Fundamental Investigations of Damage Mechanisms	9/15/2011	9/14/2017
10/21/2016	AWD04479	National Science Foundation	Oxley,Jimmie	WCPI	4950	40	\$1,980.00	A Low-Cost Velocimetry for Ultra-Fast Shock Wave Measurement	6/1/2015	5/31/2018
8/4/2016	AWD03809	Northeastern University	Oxley,Jimmie C	AWPI	470000	100	\$470,000.00	AWARENESS AND LOCALIZATION OF EXPLOSIVES-RELATED THREATS (ALERT)	8/25/2013	6/30/2017
8/25/2016	AWD03809	Northeastern University	Oxley,Jimmie C	AWPI	75000	100	\$75,000.00	AWARENESS AND LOCALIZATION OF EXPLOSIVES-RELATED THREATS (ALERT)	8/25/2013	6/30/2017
11/7/2016	AWD03809	Northeastern University	Oxley,Jimmie C	AWPI	7847	100	\$7,847.00	AWARENESS AND LOCALIZATION OF EXPLOSIVES-RELATED THREATS (ALERT)	8/25/2013	6/30/2017
11/25/2016	AWD04284	DEFENSE THREAT REDUCTION AGENCY	Oxley,Jimmie C	AWPI	174496	50	\$87,248.00	Unique Polymer Packaging and Delivery of ADW	5/19/2014	5/18/2017
11/25/2016	AWD04284	DEFENSE THREAT REDUCTION AGENCY	Smith,James L	WCPI	174496	50	\$87,248.00	Unique Polymer Packaging and Delivery of ADW	5/19/2014	5/18/2017

Communication Studies

AWARD DATE	AWARD ID	SPONSOR	INVESTIGATOR	ROLE	AWARD AMT	CREDIT	PORTION AMT	TITLE	BEGIN DATE	END DATE
10/21/2016	AWD05464	US Dept of Interior	Smith,Hollie M	WCPI	314300	22	\$69,146.00	CI - Identifying Indicators of Offshore Wind Benefits: An Analysis of the Effects of the Block Island Wind Farm on Rhode Island Recreation and Tourism	9/21/2016	12/31/2018

Computer Science

AWARD DATE	AWARD ID	SPONSOR	INVESTIGATOR	ROLE	AWARD AMT	CREDIT	PORTION AMT	TITLE	BEGIN DATE	END DATE
10/12/2016	AWD05316	U. S. DEPARTMENT OF JUSTICE	Alvarez Vega,Marco A	AWPI	396686	100	\$396,686.00	Deep Patrol: Finding Illicit Videos for Law Enforcement	1/1/2017	12/31/2018
8/29/2016	AWD03752	National Science Foundation	Peckham,Joan M	WCPI	186957	5	\$9,347.85	URI Robert Noyce teacher scholarship program	10/1/2013	3/31/2019

English

AWARD DATE	AWARD ID	SPONSOR	INVESTIGATOR	ROLE	AWARD AMT	CREDIT	PORTION AMT	TITLE	BEGIN DATE	END DATE
8/19/2016	AWD05247	NATIONAL ENDOWMENT FOR THE	Davis,Kathleen	AWPI	25000	100	\$25,000.00	Humanities at Large	9/1/2016	8/31/2017

History

AWARD DATE	AWARD ID	SPONSOR	INVESTIGATOR	ROLE	AWARD AMT	CREDIT	PORTION AMT	TITLE	BEGIN DATE	END DATE
11/29/2016	AWD05703	RI Historical Preservation & Heritage Co	Mather,Ian	AWPI	211921	100	\$211,921.00	CI - The Rhode Island Historical and Archaeological Geographic Information System	9/30/2016	3/31/2018

Languages

AWARD DATE	AWARD ID	SPONSOR	INVESTIGATOR	ROLE	AWARD AMT	CREDIT	PORTION AMT	TITLE	BEGIN DATE	END DATE
8/1/2016	AWD05196	Institute for International Education	He,Wayne Wenchao	AWPI	196024	100	\$196,024.00	Chinese Flagship 2016-2020	4/1/2016	5/31/2017
8/24/2016	AWD05196	Institute for International Education	He,Wayne Wenchao	AWPI	329575.04	100	\$329,575.04	Chinese Flagship 2016-2020	4/1/2016	5/31/2018

10/7/2016	AWD05461	US Department of Education	Magidow,Alexander	AWPI	43174	100	\$43,174.00	Building Towards an International Business Program in Arabic at URI	10/1/2016	9/30/2017
-----------	----------	----------------------------	-------------------	------	-------	-----	-------------	---	-----------	-----------

### Mathematics

AWARD DATE	AWARD ID	SPONSOR	INVESTIGATOR	ROLE	AWARD AMT	CREDIT	PORTION AMT	TITLE	BEGIN DATE	END DATE
8/29/2016	AWD03752	National Science Foundation	Libertini,Jessica M	WCPI	186957	5	\$9,347.85	URI Robert Noyce teacher scholarship program	10/1/2013	3/31/2019

### Political Science

AWARD DATE	AWARD ID	SPONSOR	INVESTIGATOR	ROLE	AWARD AMT	CREDIT	PORTION AMT	TITLE	BEGIN DATE	END DATE
10/12/2016	AWD04617	University of Illinois	Pearson-Merkowitz,Shanna	AWPI	31502	100	\$31,502.00	State Level Immigration Policy, 1990-2016	7/1/2016	6/30/2017

### Sociology & Anthropology

AWARD DATE	AWARD ID	SPONSOR	INVESTIGATOR	ROLE	AWARD AMT	CREDIT	PORTION AMT	TITLE	BEGIN DATE	END DATE
10/20/2016	AWD05377	University of Puerto Rico	Garcia-Quijano,Carlos	AWPI	38179	70	\$26,725.30	CI - Coastal Forest Fisheries: A Study of Estuarine Forest Resource Dependency in the Southern Coast of Puerto Rico	2/1/2016	1/31/2018
10/20/2016	AWD05377	University of Puerto Rico	Poggie,Jonathan	WCPI	38179	30	\$11,453.70	CI - Coastal Forest Fisheries: A Study of Estuarine Forest Resource Dependency in the Southern Coast of Puerto Rico	2/1/2016	1/31/2018

## Awards for College of Continuing Education

From 7/1/2016 To: 12/31/2016

Investigator Award Total: \$490,719.30

### Center for Human Services

AWARD DATE	AWARD ID	SPONSOR	INVESTIGATOR	ROLE	AWARD AMT	CREDIT	PORTION AMT	TITLE	BEGIN DATE	END DATE
8/26/2016	AWD05344	RI Dept of Human Services	Mathews,Deborah	AWPI	237256	100	\$237,256.00	RI DHS Training and Consultation	7/1/2016	6/30/2017

## School of Education

AWARD DATE	AWARD ID	SPONSOR	INVESTIGATOR	ROLE	AWARD AMT	CREDIT	PORTION AMT	TITLE	BEGIN DATE	END DATE
9/6/2016	AWD05536	Jumpstart for Young Children, Inc.	Brand,Susan	OTH	85202	50	\$42,601.00	Jumpstarat 17	9/1/2016	8/31/2017
8/29/2016	AWD03752	National Science Foundation	Byrd,David M	WCPI	186957	10	\$18,695.70	URI Robert Noyce teacher scholarship program	10/1/2013	3/31/2019
9/6/2016	AWD05536	Jumpstart for Young Children, Inc.	Byrd,David M	AWPI	85202	50	\$42,601.00	Jumpstarat 17	9/1/2016	8/31/2017
8/29/2016	AWD03752	National Science Foundation	De Groot,Cornelis	WCPI	186957	10	\$18,695.70	URI Robert Noyce teacher scholarship program	10/1/2013	3/31/2019
8/29/2016	AWD03752	National Science Foundation	Fogleman Jr,Jay A	WCPI	186957	10	\$18,695.70	URI Robert Noyce teacher scholarship program	10/1/2013	3/31/2019
8/29/2016	AWD03752	National Science Foundation	Peno,Kathleen A	WCPI	186957	10	\$18,695.70	URI Robert Noyce teacher scholarship program	10/1/2013	3/31/2019
8/29/2016	AWD03752	National Science Foundation	Seitsinger,Anne	AWPI	186957	50	\$93,478.50	URI Robert Noyce teacher scholarship program	10/1/2013	3/31/2019

## Awards for College of Engineering

From: 7/1/2016 To: 12/31/2016

Investigator Award Total: \$2,608,458.33

## Chemical Engineering

AWARD DATE	AWARD ID	SPONSOR	INVESTIGATOR	ROLE	AWARD AMT	CREDIT	PORTION AMT	TITLE	BEGIN DATE	END DATE
12/22/2016	AWD03286	Brown University	Bose,Arijit	WCPI	686398	25	\$171,599.50	Fundamental Investigations of Damage Mechanisms	9/15/2011	9/14/2017
8/9/2016	AWD05073	National Science Foundation	Bothun,Geoffrey	WCPI	324765	25	\$81,191.25	Remotely Activated Biomaterial Scaffolds for Flexibly Directig the Recruitment and Differentiation of Bone Progenitor Cells	8/1/2016	7/31/2019
8/25/2016	AWD04741	University of Maryland	Bothun,Geoffrey	AWPI	16285	100	\$16,285.00	Molecular Engineering of Food-Grade Dispersants as Highly Efficient and Safe Products for the Treatment of Oil Spills	1/1/2016	12/31/2016
12/5/2016	AWD04741	University of Maryland	Bothun,Geoffrey	AWPI	16285	100	\$16,285.00	Molecular Engineering of Food-Grade Dispersants as Highly Efficient and Safe Products for the Treatment of Oil Spills	1/1/2016	12/31/2016
8/5/2016	AWD05178	RI Commerce Corporation	Gregory,Otto	WCPI	49921.25	50	\$24,960.62	RFID Tags for Traceability, Counterfeiting and Inventory Control	8/9/2016	6/1/2017

10/1/2016	AWD05582	URI Research Foundation	Gregory,Otto	AWPI	29289	100	\$29,289.00	High Resolution, Thin Film Thermocouples Utilizing CMC as a Thermocouple Leg	8/25/2016	8/25/2017
11/23/2016	AWD05477	National Science Foundation	Lucia,Angelo	AWPI	50000	100	\$50,000.00	I-CORPS: Energy Efficient Process Design Alternatives	12/1/2016	5/31/2017
8/30/2016	AWD05356	Alternatives Research & Development Fou	Meenach,Samantha	AWPI	39981	100	\$39,981.00	Development of a Comprehensive in Vitro Air-Grown Lung Cancer Pre-Clinical Assay Platform	8/1/2016	7/31/2017

### Civil and Environmental Engine

AWARD DATE	AWARD ID	SPONSOR	INVESTIGATOR	ROLE	AWARD AMT	CREDIT	PORTION AMT	TITLE	BEGIN DATE	END DATE
9/22/2016	AWD05504	International Centre for Diarrhoeal Dise	Akanda,Ali	AWPI	79910	100	\$79,910.00	Control of Endemic Cholera in Bangladesh	9/21/2016	8/31/2019
8/16/2016	AWD04946	RI Dept. of Transportation	Baxter,Christopher	WCPI	6640	33	\$2,191.20	Study of Scour at Rhode Island Bridges	1/1/2016	12/31/2017
8/16/2016	AWD04946	RI Dept. of Transportation	Bradshaw,Aaron	AWPI	6640	34	\$2,257.60	Study of Scour at Rhode Island Bridges	1/1/2016	12/31/2017
7/15/2016	AWD03983	RI Dept. of Transportation	Bradshaw,Aaron S.	AWPI	11723	100	\$11,723.00	Performance of micropiles in Rhode Island soils	9/30/2015	9/30/2016
9/27/2016	AWD05451	RI Dept. of Transportation	Craver,Vinka	AWPI	140185	100	\$140,185.00	Implementation of RIDOT Environmental Compliance Assistance Program (RHODECAP) to New Construction Projects	1/1/2017	7/31/2019
9/13/2016	AWD05456	RI Dept. of Transportation	Gindy,Mayrai	AWPI	70425	100	\$70,425.00	Automatic Interpretation of GPR Images Using Artificial Neural Networks	9/1/2016	12/31/2017
8/4/2016	AWD05513	Korea Institute for Civil Engineering &	Lee,Kang-Won	AWPI	62160	100	\$62,160.00	Classification of Cold Recycled Pavement Materials Contained Portland Cement (Phase II)	5/21/2016	4/20/2017

### Dean Engineering

AWARD DATE	AWARD ID	SPONSOR	INVESTIGATOR	ROLE	AWARD AMT	CREDIT	PORTION AMT	TITLE	BEGIN DATE	END DATE
11/29/2016	AWD05137	University of Connecticut STORRS	Wright,Raymond	AWPI	64876	100	\$64,876.00	Northeast LSAMP Senior Alliance: 2016-2021	9/1/2016	8/31/2021

**Elec, Computer & Bio Engr**

AWARD DATE	AWARD ID	SPONSOR	INVESTIGATOR	ROLE	AWARD AMT	CREDIT	PORTION AMT	TITLE	BEGIN DATE	END DATE
11/22/2016	AWD05159	Defense Engineering Corporation	Kay,Steven	AWPI	108500	100	\$108,500.00	Information-Theoretic Approaches to Radar Waveform Design	1/1/2016	12/31/2016
8/9/2016	AWD05073	National Science Foundation	Kennedy,Stephen	AWPI	324765	75	\$243,573.75	Remotely Activated Biomaterial Scaffolds for Flexibly Directig the Recruitment and Differentiation of Bone Progenitor Cells	8/1/2016	7/31/2019
9/15/2016	AWD05100	Rhode Island Hospital	Mankodiya,Kunal	AWPI	77950	100	\$77,950.00	Understanding the Interplay of Social Context and Physiology on Psychological Outcomes in Trauma-Exposed Adolescents	7/1/2016	3/31/2017
8/5/2016	AWD05178	RI Commerce Corporation	Wei,Tao	AWPI	49921.25	50	\$24,960.62	RFID Tags for Traceability, Counterfeiting and Inventory Control	8/9/2016	6/1/2017
10/21/2016	AWD04479	National Science Foundation	Wei,Tao	AWPI	4950	60	\$2,970.00	A Low-Cost Velocimetry for Ultra-Fast Shock Wave Measurement	6/1/2015	5/31/2018
11/23/2016	AWD05693	URI Research Foundation	Wei,Tao	AWPI	79589	100	\$79,589.00	Joint Research Project Between Dapu Tech and URI	8/25/2016	8/15/2017

**Mech., Ind., Sys. Engineering**

AWARD DATE	AWARD ID	SPONSOR	INVESTIGATOR	ROLE	AWARD AMT	CREDIT	PORTION AMT	TITLE	BEGIN DATE	END DATE
7/8/2016	AWD04925	NERACOOS	Hashemi,S. M. Reza	AWPI	62307	100	\$62,307.00	Integrated Watershed and River Modeling Study of the Pawtuxet River, RI	5/1/2016	11/30/2017
7/15/2016	AWD05168	RI Commerce Corporation	Jouaneh,Musa	AWPI	45549	100	\$45,549.00	Design of a Novel Robotic Gripper	7/12/2016	7/12/2017
7/18/2016	AWD05185	RI_Commerce_Corporation	Rousseau,Carl-Ernst	WCPI	50000	50	\$25,000.00	HIPS Wind Energy Performance Study	5/1/2016	4/30/2017
12/26/2016	AWD05621	US of Office of Naval Research	Shukla,Arun	AWPI	30000	100	\$30,000.00	Implosion of Advanced Composite Structures Within Complex Underwater Environments	1/1/2017	12/31/2019
7/18/2016	AWD05185	RI_Commerce_Corporation	Taggart,David	AWPI	50000	50	\$25,000.00	HIPS Wind Energy Performance Study	5/1/2016	4/30/2017

**Ocean Engineering**

AWARD DATE	AWARD ID	SPONSOR	INVESTIGATOR	ROLE	AWARD AMT	CREDIT	PORTION AMT	TITLE	BEGIN DATE	END DATE
8/4/2016	AWD05503	US of Office of Naval Research	Dahl,Jason	WCPI	60000	50	\$30,000.00	Further Development and Validation of an Efficient Hybrid-BEM-LBM Model for Fluid-Structure Interaction Problems	9/1/2016	8/31/2021



8/4/2016	AWD05370	US of Office of Naval Research	Dahl,Jason	AWPI	65000	100	\$65,000.00	Integrated Experiments and Simulation for Hydrodynamic Control and Detection	9/1/2016	8/31/2020
12/12/2016	AWD05503	US of Office of Naval Research	Dahl,Jason	WCPI	120000	50	\$60,000.00	Further Development and Validation of an Efficient Hybrid-BEM-LBM Model for Fluid-Structure Interaction Problems	9/1/2016	8/31/2021
12/12/2016	AWD05370	US of Office of Naval Research	Dahl,Jason	AWPI	100000	100	\$100,000.00	Integrated Experiments and Simulation for Hydrodynamic Control and Detection	9/1/2016	8/31/2020
12/2/2016	AWD05413	University of Delaware	Grilli,Annette	WCPI	107657	50	\$53,828.50	Modeling Tsunami Inundation and Hazard for the US East Coast (Phase 4)	9/1/2016	1/15/2017
8/4/2016	AWD05503	US of Office of Naval Research	Grilli,Stephan	AWPI	60000	50	\$30,000.00	Further Development and Validation of an Efficient Hybrid-BEM-LBM Model for Fluid-Structure Interaction Problems	9/1/2016	8/31/2021
12/2/2016	AWD05413	University of Delaware	Grilli,Stephan	AWPI	107657	50	\$53,828.50	Modeling Tsunami Inundation and Hazard for the US East Coast (Phase 4)	9/1/2016	1/15/2017
12/12/2016	AWD05503	US of Office of Naval Research	Grilli,Stephan	AWPI	120000	50	\$60,000.00	Further Development and Validation of an Efficient Hybrid-BEM-LBM Model for Fluid-Structure Interaction Problems	9/1/2016	8/31/2021
10/3/2016	AWD04881	Naval Undersea Warfare Center	Licht,Stephen	AWPI	104516.99	100	\$104,516.99	NEEC: Modeling and Control of Agile Biologically Inspired Unmanned Underwater Vehicles	9/30/2016	9/29/2017
8/26/2016	AWD04935	HDR / e2M	Miller,James	AWPI	8666.22	50	\$4,333.11	Noise Measurements During Block Island Wind Farm Construction	9/30/2015	12/31/2016
9/6/2016	AWD04743	Brown University	Miller,James	AWPI	58649	50	\$29,324.50	Remote Sensing of Sub-Surface Structure of Extraterrestrial Bodies Using Laser Doppler Velocimetry Measurements of Rayleigh Waves	5/6/2015	5/5/2017
10/24/2016	AWD05466	HDR / e2M	Miller,James	AWPI	272048.59	50	\$136,024.29	Underwater Acoustic Data Analysis and Measurements for the Block Island Wind Farm Construction and Operation	8/23/2016	12/31/2017
10/28/2016	AWD05336	US of Office of Naval Research	Miller,James	AWPI	110000	50	\$55,000.00	Low Frequency Acoustic Propagation: The Effects of Sediment Properties	4/1/2016	9/30/2019
8/26/2016	AWD04935	HDR / e2M	Potty,Gopu	WCPI	8666.22	50	\$4,333.11	Noise Measurements During Block Island Wind Farm Construction	9/30/2015	12/31/2016
9/6/2016	AWD04743	Brown University	Potty,Gopu	WCPI	58649	50	\$29,324.50	Remote Sensing of Sub-Surface Structure of Extraterrestrial Bodies Using Laser Doppler Velocimetry Measurements of Rayleigh Waves	5/6/2015	5/5/2017
10/24/2016	AWD05466	HDR / e2M	Potty,Gopu	WCPI	272048.59	50	\$136,024.29	Underwater Acoustic Data Analysis and Measurements for the Block Island Wind Farm Construction and Operation	8/23/2016	12/31/2017
10/28/2016	AWD05336	US of Office of Naval Research	Potty,Gopu	WCPI	110000	50	\$55,000.00	Low Frequency Acoustic Propagation: The Effects of Sediment Properties	4/1/2016	9/30/2019
9/16/2016	AWD05277	MITRE Corporation	Vincent,Harold	AWPI	13202	100	\$13,202.00	COEUT: Multi-Static Sensor Array Testbed	4/1/2016	9/30/2016

## Awards for College of Environmental Life Sciences

From: 7/1/2016 To: 12/31/2016

Investigator Award Total: \$6,551,164.64

### Biochem-Microb-Molecular Gen.

AWARD DATE	AWARD ID	SPONSOR	INVESTIGATOR	ROLE	AWARD AMT	CREDIT	PORTION AMT	TITLE	BEGIN DATE	END DATE
7/21/2016	AWD04282	University of California at Davis	Rothman,Alan	AWPI	60697	100	\$60,697.00	Quantifying Heterogeneities in Dengue Virus Transmission Dynamics	5/1/2016	4/30/2017

### CELS Academic Unit 1

AWARD DATE	AWARD ID	SPONSOR	INVESTIGATOR	ROLE	AWARD AMT	CREDIT	PORTION AMT	TITLE	BEGIN DATE	END DATE
7/18/2016	AWD04638	Tri-State Turf Research Foundation	Alm,Steven	AWPI	11236	100	\$11,236.00	Surfactants and Synergists for Control of Annual Bluegrass Weevils on Golf Course Turf	1/20/2015	12/31/2017
10/11/2016	AWD05426	US Department of Agriculture	Alm,Steven	AWPI	202000	100	\$202,000.00	Risk Management and Crop Insurance Education for Rhode Island Growers 2016-17	9/30/2016	9/29/2017
8/5/2016	AWD05190	RI Commerce_Corporation	Bradley,Terence	AWPI	50000	100	\$50,000.00	Investigation of Spirulina Blue-Green Algae for Aquaculture Fish Feeds	6/15/2016	6/15/2017
8/19/2016	AWD05148	RI Dept. of Transportation	Brown,Rebecca	WCPI	223093	25	\$55,773.25	Evaluating the Effectiveness of Improved Roadside Best Management Practices in Maintaining Storm Water	9/1/2016	8/31/2019
10/6/2016	AWD05388	University of Vermont	Brown,Rebecca	AWPI	14638	100	\$14,638.00	Developing Production Protocol and Connecting Producers to Consumers of Vegetable Amaranth	7/29/2016	12/31/2017
8/16/2016	AWD05126	Cornell University	Casagrande,Richard	AWPI	109949	50	\$54,974.50	Developing Biocontrol for Invasive Phragmites Australis	6/1/2016	1/31/2021
9/13/2016	AWD04437	US Department of Agriculture	Casagrande,Richard A	AWPI	161000	100	\$161,000.00	Extension Implementation Program for Rhode Island: Continuing a Tradition of Success	9/1/2014	8/31/2017
11/7/2016	AWD05660	University of Vermont	Faubert,Heather	AWPI	20500	100	\$20,500.00	Northeast Plant Diagnostic Network FY 2016	10/1/2016	10/31/2017
12/21/2016	AWD05412	Cornell University	Faubert,Heather	AWPI	20060	100	\$20,060.00	Northeast Plant Diagnostic Network FY 2016/2018	9/1/2016	8/31/2018
8/29/2016	AWD04659	University of Maryland	Gomez-Chiarri,Marta	WCPI	84215	33	\$27,790.95	Safe Feedstocks for Bivalve Aquaculture	9/1/2015	8/31/2017
9/27/2016	AWD05028	US Department of Agriculture	Gomez-Chiarri,Marta	AWPI	57750	100	\$57,750.00	Defining Disease Resistant and Tolerant Phenotypes Among Selectively Bred Oyster Families	9/1/2015	8/30/2019
11/17/2016	AWD05335	US Dept of Commerce NOAA	Hatzipetro,Mitchell	WCPI	185255	37.5	\$69,470.62	The Flatfish Deflector Bar: Excluding Flatfish from Scallop Dredges in the Northeast	8/1/2016	7/31/2017

11/17/2016	AWD05335	US Dept of Commerce NOAA	Skrobe,Laura	AWPI	185255	37.5	\$69,470.62	The Flatfish Deflector Bar: Excluding Flatfish from Scallop Dredges in the Northeast	8/1/2016	7/31/2017
11/17/2016	AWD05335	US Dept of Commerce NOAA	Somers,Barbara	WCPI	185255	25	\$46,313.75	The Flatfish Deflector Bar: Excluding Flatfish from Scallop Dredges in the Northeast	8/1/2016	7/31/2017
7/21/2016	AWD05345	University of Connecticut STORRS	Tewksbury,Elizabeth	AWPI	4000	100	\$4,000.00	Biological Control of Lily Leaf Beetle	4/1/2016	12/31/2016
8/16/2016	AWD05126	Cornell University	Tewksbury,Elizabeth	WCPI	109949	50	\$54,974.50	Developing Biocontrol for Invasive Phragmites Australis	6/1/2016	1/31/2021
7/20/2016	AWD05044	RI Office of Energy Resources	Trandafir,Simona	AWPI	70000	100	\$70,000.00	Technical and Strategic Support for the Efficient Buildings Fund	7/1/2016	12/31/2017

## CELS Academic Unit 2

AWARD DATE	AWARD ID	SPONSOR	INVESTIGATOR	ROLE	AWARD AMT	CREDIT	PORTION AMT	TITLE	BEGIN DATE	END DATE
12/30/2016	AWD05317	Barnstable County	Amador,Jose	AWPI	181717	50	\$90,858.50	Full-Scale Assessment of Non-proprietary Passive Nitrogen Removing Septic Systems	9/1/2016	8/31/2020
7/7/2016	AWD05440	Rhode Island Statewide Planning	August,Peter	AWPI	56000	100	\$56,000.00	CI - FY2017 Sustaining and Enhancing Access to the Rhode Island Geographic Information System (RIGIS) Geospatial Database	7/1/2016	6/30/2017
8/23/2016	AWD04871	US Dept of Interior	August,Peter	AWPI	117370	25	\$29,342.50	CI - Resource Based Geospatial and Enterprise GIS Support to the NER of the NPS FY15	8/22/2016	12/31/2017
11/4/2016	AWD05656	McLaughlin Research Corporation	August,Peter	AWPI	35276	100	\$35,276.00	CI - GIS Support Services for the Naval Undersea Warfare (NUWC/DIVNPT) Center's Marine Environmental Planning Laboratory (MEP)	9/22/2016	9/21/2017
7/14/2016	AWD04428	AmericaView	August,Peter V	WCPI	23500	25	\$5,875.00	CI - AmericaView Affiliate Development Grant Opportunity	7/1/2016	6/30/2017
8/29/2016	AWD04872	US Army Corps of Engineers	Becker,Austin H	AWPI	67384	100	\$67,384.00	CI - Measuring Risk to Inform Resilience: Pilot Study for North Atlantic Medium and High Use Maritime Freight Nodes	6/20/2016	12/31/2016
10/21/2016	AWD05464	US Dept of Interior	Bidwell,David	WCPI	314300	16	\$50,288.00	CI - Identifying Indicators of Offshore Wind Benefits: An Analysis of the Effects of the Block Island Wind Farm on Rhode Island Recreation and Tourism	9/21/2016	12/31/2018
10/18/2016	AWD05452	RI Coastal Res Mgt.Council	Bonynge,Gregory	WCPI	219890	45	\$98,950.50	CI - HUD III-Shoreline Change Special Area Management Plan (Beach SAMP): Coastal Parcel Data Set and Shoreline Change Mapping for CERL	10/1/2016	9/30/2017
7/14/2016	AWD04428	AmericaView	Bonynge,Gregory H	WCPI	23500	25	\$5,875.00	CI - AmericaView Affiliate Development Grant Opportunity	7/1/2016	6/30/2017
8/1/2016	AWD04755	The Energy and Resource Institute	Boving,Thomas	AWPI	5661	100	\$5,661.00	From Polluted Rivers to Clean Irrigation Water	5/7/2016	5/5/2017
8/4/2016	AWD05329	ADOX Technologies - Intl. Dioxide, Inc	Boving,Thomas	AWPI	7018	50	\$3,509.00	NMR Study of ClO2 / Alpha-Cyclodextrin Complexation	5/31/2016	6/30/2016

8/19/2016	AWD05148	RI Dept. of Transportation	Boving,Thomas	WCPI	223093	25	\$55,773.25	Evaluating the Effectiveness of Improved Roadside Best Management Practices in Maintaining Storm Water	9/1/2016	8/31/2019
8/31/2016	AWD05538	RI Water Resources Board	Boving,Thomas	AWPI	6517	50	\$3,258.50	RIWRB Proposal Development Project	7/1/2016	10/31/2016
9/6/2016	AWD05373	RI Department of Administration	Boving,Thomas	WCPI	275000	50	\$137,500.00	Scituate Reservoir Mitigation Model: Feasibility of a Retrofit and Concurrent Safe Yield Analysis	9/1/2016	9/30/2018
7/19/2016	AWD04994	Brown University	Cardace,Dawn	AWPI	8500	100	\$8,500.00	Tackling the Astrobiological Potential of Hydrothermal Processes: Comparing Distributions of Minerals and Organics in Earth's Seabed	6/1/2016	8/31/2016
10/6/2016	AWD05400	Brown University	Cardace,Dawn	AWPI	42887	100	\$42,887.00	Connecting Serpentinite Whole Rock Geochemistry to Astrobiology	8/15/2016	8/31/2017
11/22/2016	AWD05445	University of California, Los Angeles	Cardace,Dawn	AWPI	8959	100	\$8,959.00	Flux and Fate of Reduced Carbon in a Carbonate-Capped, Serpentinizing System: Palawan, Philippines	10/1/2016	3/15/2017
8/23/2016	AWD04871	US Dept of Interior	Cressman,Jessica A.	WCPI	117370	25	\$29,342.50	CI - Resource Based Geospatial and Enterprise GIS Support to the NER of the NPS FY15	8/22/2016	12/31/2017
8/15/2016	AWD05405	US Dept of Interior	Druschke,Caroline	AWPI	40493	100	\$40,493.00	CI - Science Communication Outreach for the Northeast Coastal and Barrier Network	6/15/2016	10/31/2017
8/23/2016	AWD04871	US Dept of Interior	Duhaime,Roland	WCPI	117370	25	\$29,342.50	CI - Resource Based Geospatial and Enterprise GIS Support to the NER of the NPS FY15	8/22/2016	12/31/2017
10/12/2016	AWD05600	UNESCO	Engelhart,Simon	AWPI	8000	100	\$8,000.00	Sea-Level Changes from Minutes to Millennia	3/8/2016	12/31/2016
12/21/2016	AWD05407	US Geological Survey	Engelhart,Simon	AWPI	18050	100	\$18,050.00	A Comparative Analysis of Onshore-Offshore Paleoseismic Archives: Collab. Research with Oregon State University and URI	1/1/2017	12/31/2017
9/6/2016	AWD05116	The City University of New York	Gold,Arthur	AWPI	37019	100	\$37,019.00	CI - CNH-L: Multi-Scale Coupled Natural Human System Dynamics of Nitrogen in Residential Landscapes	7/1/2016	6/30/2019
10/4/2016	AWD04418	RI Department of Health	Gold,Arthur J	WCPI	200000	30	\$60,000.00	CI - Municipal Capacity Training and Public Outreach Source Water Protection Project	7/1/2014	6/30/2017
10/20/2016	AWD04766	Wildlife Management Institute	Husband,Thomas	AWPI	210910	100	\$210,910.00	WMI Service Contract to Support Wildlife Management of New England Cottontail (Sylvilagus transitionalis)	3/20/2015	3/19/2019
10/4/2016	AWD04418	RI Department of Health	Joubert,Lorraine B	AWPI	200000	35	\$70,000.00	CI - Municipal Capacity Training and Public Outreach Source Water Protection Project	7/1/2014	6/30/2017
7/14/2016	AWD04428	AmericaView	Labash,Charles	WCPI	23500	25	\$5,875.00	CI - AmericaView Affiliate Development Grant Opportunity	7/1/2016	6/30/2017
8/23/2016	AWD04871	US Dept of Interior	Labash,Charles	WCPI	117370	25	\$29,342.50	CI - Resource Based Geospatial and Enterprise GIS Support to the NER of the NPS FY15	8/22/2016	12/31/2017
12/30/2016	AWD05317	Barnstable County	Loomis,George	WCPI	181717	50	\$90,858.50	Full-Scale Assessment of Non-proprietary Passive Nitrogen Removing Septic Systems	9/1/2016	8/31/2020
10/4/2016	AWD04418	RI Department of Health	Mccann,Alyson	WCPI	200000	35	\$70,000.00	CI - Municipal Capacity Training and Public Outreach Source Water Protection Project	7/1/2014	6/30/2017

10/21/2016	AWD05464	US Dept of Interior	Moore,Amelia	WCPI	314300	16	\$50,288.00	CI - Identifying Indicators of Offshore Wind Benefits: An Analysis of the Effects of the Block Island Wind Farm on Rhode Island Recreation and Tourism	9/21/2016	12/31/2018
10/13/2016	AWD04989	University of North Carolina - CH	Opaluch,James	WCPI	436036	24	\$104,648.64	CI - Dept. of Homeland Security Coastal Resilience Center of Excellence Projects	1/1/2016	6/30/2017
7/28/2016	AWD05323	US Fish and Wildlife Service	Paton,Peter	AWPI	21115	100	\$21,115.00	CI - Tern and Plover Nanotag Study - Southern New England and New York	7/18/2016	5/31/2017
12/22/2016	AWD05734	US Fish and Wildlife Service	Paton,Peter	AWPI	109920	100	\$109,920.00	CI - Tracking Movements of Endangered Roseate Terns and Threatened Piping Plovers During Breeding, Post-Breeding and Fall Migration Periods	1/15/2017	12/31/2018
8/19/2016	AWD05148	RI Dept. of Transportation	Pradhanang,Soni	AWPI	223093	50	\$111,546.50	Evaluating the Effectiveness of Improved Roadside Best Management Practices in Maintaining Storm Water	9/1/2016	8/31/2019
8/31/2016	AWD05538	RI Water Resouces Board	Pradhanang,Soni	WCPI	6517	50	\$3,258.50	RIWRB Proposal Development Project	7/1/2016	10/31/2016
9/6/2016	AWD05373	RI Department of Administration	Pradhanang,Soni	AWPI	275000	50	\$137,500.00	Scituate Reservoir Mitigation Model: Feasibility of a Retrofit and Concurrent Safe Yield Analysis	9/1/2016	9/30/2018
12/21/2016	AWD05346	Mass Audubon	Uchida,Emi	WCPI	278076	40	\$111,230.40	CI - US EPA Region 1 Southeast New England Program for Coastal Watershed	10/1/2016	9/30/2019
7/14/2016	AWD04428	AmericaView	Wang,Yeqiao	AWPI	23500	25	\$5,875.00	CI - AmericaView Affiliate Development Grant Opportunity	7/1/2016	6/30/2017

### CELS Academic Unit 3

AWARD DATE	AWARD ID	SPONSOR	INVESTIGATOR	ROLE	AWARD AMT	CREDIT	PORTION AMT	TITLE	BEGIN DATE	END DATE
10/26/2016	AWD05623	Zoetis	De Groot,Anne	AWPI	19955	100	\$19,955.00	Analysis of PRRSV Peptides	10/20/2016	10/19/2017
8/18/2016	AWD05404	Pearson Education	Dewsbury,Bryan M	AWPI	5000	100	\$5,000.00	Reflection Assignments and the Academic Performance of Underrepresented Minorities	6/1/2016	5/31/2017
8/26/2016	AWD05172	RI Board of Gov for High Ed	Dewsbury,Bryan M	AWPI	10100	100	\$10,100.00	The Effects of Social Emntional Learning on Academic Performance and Behavior	3/1/2016	6/30/2016
9/29/2016	AWD05479	CHEROKEE NATION TECHNOLOGY	Mathew,Anuja	AWPI	11656.16	100	\$11,656.16	Generation of Fluorescently Labeled Dengue Viruses	9/19/2016	10/19/2016
11/22/2016	AWD05479	CHEROKEE NATION TECHNOLOGY	Mathew,Anuja	AWPI	38343.84	100	\$38,343.84	Generation of Fluorescently Labeled Dengue Viruses	9/19/2016	9/18/2017
7/21/2016	AWD04885	Restore America's Estuaries	Moseman-Valtierra,Serena	AWPI	22078	100	\$22,078.00	Expanding Blue Carbon Implementation: Increasing GHG Model Application in Tidally Restricted and Restored New England Salt Marshes	1/1/2016	8/31/2017
8/29/2016	AWD04659	University of Maryland	Nelson,David	WCPI	84215	33	\$27,790.95	Safe Feedstocks for Bivalve Aquaculture	9/1/2015	8/31/2017

8/11/2016	AWD03994	Pennsylvania State University	Roberts,Alison	AWPI	101005	100	\$101,005.00	CENTER FOR LIGNOCELLULOSE STRUCTURE AND FORMATION (CLSF)	8/1/2014	7/31/2017
8/18/2016	AWD05072	United States Army	Rothman,Alan	AWPI	1427065	100	\$1,427,065.00	Systems Biology of the Immune Response to Live and Inactivated Dengue Virus Vaccines	9/1/2016	8/31/2018
8/29/2016	AWD04971	CHEROKEE NATION TECHNOLOGY	Rothman,Alan	AWPI	44184.29	100	\$44,184.29	Development of Immunology Research Agenda To Support the WRAIR...	8/1/2015	7/31/2017

### Dean Environment Life Science

AWARD DATE	AWARD ID	SPONSOR	INVESTIGATOR	ROLE	AWARD AMT	CREDIT	PORTION AMT	TITLE	BEGIN DATE	END DATE
8/31/2016	AWD04161	US Dept of Interior	Boothroyd,Jon C	WCPI	200000	33	\$66,000.00	CI IDENTIFICATION OF SAND/GRAVEL RESOURCES IN RHODE ISLAND WATERS	7/29/2014	7/31/2018
9/22/2016	AWD05576	US Department of Agriculture	Kirby,John	AWPI	147513	100	\$147,513.00	FY17 McIntire Stennis Land Grant	10/1/2016	9/30/2018
10/1/2016	AWD05583	US Department of Agriculture	Kirby,John	AWPI	150122	100	\$150,122.00	Hatch Regional FY17	10/1/2016	9/30/2018
10/10/2016	AWD05654	US Department of Agriculture	Kirby,John	AWPI	148902	100	\$148,902.00	FY17 Hatch Formula	10/1/2016	9/30/2018
10/24/2016	AWD05614	US Department of Agriculture	Kirby,John	AWPI	1133542	100	\$1,133,542.00	FY17 Co-op Extension 3b 3c	10/1/2016	9/30/2021
11/25/2016	AWD05709	US Department of Agriculture	Kirby,John	AWPI	6803	100	\$6,803.00	CSRS Federal Retirement FY13	10/1/2012	6/30/2017
12/1/2016	AWD05719	US Department of Agriculture	Kirby,John	AWPI	3267	100	\$3,267.00	CSRS Federal Retirement FY15	10/1/2014	6/30/2019
12/1/2016	AWD05715	US Department of Agriculture	Kirby,John	AWPI	5387	100	\$5,387.00	CSRS Federal Retirement FY14	10/1/2016	6/30/2018
7/12/2016	AWD04280	USDA Forest Service	Sheely,Deborah L	AWPI	13000	80	\$10,400.00	Northeast Climate Hub	7/1/2014	6/30/2019

### Fish-Animal-Vet-Science

AWARD DATE	AWARD ID	SPONSOR	INVESTIGATOR	ROLE	AWARD AMT	CREDIT	PORTION AMT	TITLE	BEGIN DATE	END DATE
9/30/2016	AWD03911	University of Connecticut Avery Point	Bengtson,David A	AWPI	6300	100	\$6,300.00	ALTERNATIVE FEEDS AND PROCESSING FOR FRESHWATER FISH	10/1/2014	12/31/2017
7/12/2016	AWD04129	US Department of Agriculture	Rhodes III,Richard C	WCPI	222689.27	10	\$22,268.92	CI- WEST AFRICA ANALYTICAL SUPPORT SERVICES AND EVALUATIONS FOR	3/1/2014	3/19/2019

10/25/2016	AWD03801	Fisheries Specialists	Skrobe,Laura G	AWPI	29720	100	\$29,720.00	Industry based survey on black sea bass utilizing ventless traps	11/3/2013	12/31/2017
------------	----------	-----------------------	----------------	------	-------	-----	-------------	--	-----------	------------

**Natural Res. Science**

AWARD DATE	AWARD ID	SPONSOR	INVESTIGATOR	ROLE	AWARD AMT	CREDIT	PORTION AMT	TITLE	BEGIN DATE	END DATE
7/12/2016	AWD04280	USDA Forest Service	Gold,Arthur J	WCPI	13000	20	\$2,600.00	Northeast Climate Hub	7/1/2014	6/30/2019

**Awards for College of Health Sciences**

**From: 7/1/2016 To: 12/31/2016**

**Investigator Award Total: \$1,299,330.64**

**Cancer Prevention Res. Ctr**

AWARD DATE	AWARD ID	SPONSOR	INVESTIGATOR	ROLE	AWARD AMT	CREDIT	PORTION AMT	TITLE	BEGIN DATE	END DATE
10/13/2016	AWD04989	University of North Carolina - CH	Prochaska,James O	WCPI	436036	24	\$104,648.64	CI - Dept. of Homeland Security Coastal Resilience Center of Excellence Projects	1/1/2016	6/30/2017
7/8/2016	AWD04811	Kent Center	Stein,Lynda	AWPI	12500	100	\$12,500.00	Healthy Transitions - The Kent Center	10/1/2015	9/30/2016
8/31/2016	AWD04809	RI Dept of Behavioral Healthcare,Devel	Stein,Lynda	AWPI	124060	100	\$124,060.00	Healthy Transitions - BHDDH	1/1/2015	12/31/2019
10/12/2016	AWD05087	RI Dept of Behavioral Healthcare,Devel	Stein,Lynda	AWPI	50000	100	\$50,000.00	BHDDH - Youth Treatment Planning Project	2/1/2016	9/29/2017
10/13/2016	AWD04809	RI Dept of Behavioral Healthcare,Devel	Stein,Lynda	AWPI	124060	100	\$124,060.00	Healthy Transitions - BHDDH	1/1/2015	9/29/2017
11/1/2016	AWD04811	Kent Center	Stein,Lynda	AWPI	12500	100	\$12,500.00	Healthy Transitions - The Kent Center	10/1/2015	9/30/2017

**Food Science And Nutrition**

AWARD DATE	AWARD ID	SPONSOR	INVESTIGATOR	ROLE	AWARD AMT	CREDIT	PORTION AMT	TITLE	BEGIN DATE	END DATE
8/19/2016	AWD03778	US Department of Agriculture	Sebelia,Linda M	AWPI	135000	100	\$135,000.00	CELS: INTEGRATING NUTRITION EDUCATION INTO PROVIDENCE FULL SERVICE SCHOOLS IN PROVIDENCE RI	9/1/2013	8/31/2017

10/11/2016	AWD04265	Tufts University	Tovar,Alison	AWPI	17000	100	\$17,000.00	System Science to Guide Whole-of-Community Childhood Obesity Interventions	5/1/2015	4/30/2017
9/30/2016	AWD05578	US Department of Agriculture	Kirby,John	AWPI	146724	100	\$146,724.00	EFNEP FY2017	10/1/2016	9/30/2020

### Human Development & Family Stu

AWARD DATE	AWARD ID	SPONSOR	INVESTIGATOR	ROLE	AWARD AMT	CREDIT	PORTION AMT	TITLE	BEGIN DATE	END DATE
12/30/2016	AWD05483	Rhode Island College	Mccurdy,Karen	AWPI	74950	100	\$74,950.00	Recruitment and Retention of Early Childhood Professionals in Early Intervention Programs	7/1/2016	5/30/2017

### Physical Therapy

AWARD DATE	AWARD ID	SPONSOR	INVESTIGATOR	ROLE	AWARD AMT	CREDIT	PORTION AMT	TITLE	BEGIN DATE	END DATE
7/11/2016	AWD05441	National Institute of Health	Roush,Susan	AWPI	487511	100	\$487,511.00	RIDDC FY 2016	10/1/2015	9/30/2017
8/18/2016	AWD05441	National Institute of Health	Roush,Susan	AWPI	10377	100	\$10,377.00	RIDDC FY 2016	10/1/2015	9/30/2017

## Awards for Academic Health Collaborative

From: 7/1/2016 To: 12/31/2016

Investigator Award Total: \$238,333.33

### IIHI Administration

AWARD DATE	AWARD ID	SPONSOR	INVESTIGATOR	ROLE	AWARD AMT	CREDIT	PORTION AMT	TITLE	BEGIN DATE	END DATE
10/13/2016	AWD05601	The Collaborative	Blissmer,Bryan	AWPI	5000	100	\$5,000.00	Potential Benefits and Structure of a State University Medicaid Partnership	10/1/2016	12/31/2016
10/25/2016	AWD05570	State of Rhode Island	Blissmer,Bryan	AWPI	233333.33	100	\$233,333.33	State Innovation Model (SIM) Test Grant Evaluation	10/15/2016	6/30/2017



**Awards for College of Nursing**

**From: 7/1/2016 To: 12/31/2016**

**Investigator Award Total: \$504,083.37**

**Nursing Instruction**

AWARD DATE	AWARD ID	SPONSOR	INVESTIGATOR	ROLE	AWARD AMT	CREDIT	PORTION AMT	TITLE	BEGIN DATE	END DATE
10/14/2016	AWD04052	RI Foundation	Dunphy,Lynne M	AWPI	50000	100	\$50,000.00	Developing RI Ph.D. Nurse Leaders to Transform Health Care	8/31/2014	8/31/2017
8/31/2016	AWD03563	US Dep of Health & Human Svcs	Erickson-Owens,Debra Ann	WCPI	39589	50	\$19,794.50	Effects of placental transfusion on early brain development	1/1/2016	12/31/2016
12/22/2016	AWD03563	US Dep of Health & Human Svcs	Erickson-Owens,Debra Ann	WCPI	386584	50	\$193,292.00	Effects of placental transfusion on early brain development	1/1/2017	12/31/2017
8/31/2016	AWD03563	US Dep of Health & Human Svcs	Mercer,Judith S	AWPI	39589	50	\$19,794.50	Effects of placental transfusion on early brain development	1/1/2016	12/31/2016
12/22/2016	AWD03563	US Dep of Health & Human Svcs	Mercer,Judith S	AWPI	386584	50	\$193,292.00	Effects of placental transfusion on early brain development	1/1/2017	12/31/2017
10/5/2016	AWD04901	Brown University	Thompson,Marcella	AWPI	27910.37	100	\$27,910.37	Re-Use in Rhode Island: A State-Based Approach to Complex Exposures	4/1/2016	3/31/2017

**Awards for Graduate School of Oceanography**

**From: 7/1/2016 To: 12/31/2016**

**Investigator Award Total: \$13,341,037.62**

**GSO Coastal Resources Center**

AWARD DATE	AWARD ID	SPONSOR	INVESTIGATOR	ROLE	AWARD AMT	CREDIT	PORTION AMT	TITLE	BEGIN DATE	END DATE
10/4/2016	AWD04536	US Agcy for International Dev.	Crawford,Brian	AWPI	2200000	50	\$1,100,000.00	CI - Ghana Sustainable Fisheries Management Project	1/1/2014	10/31/2019
10/18/2016	AWD05452	RI Coastal Res Mgt.Council	Crean,Teresa	AWPI	219890	18	\$39,580.20	CI - HUD III-Shoreline Change Special Area Management Plan (Beach SAMP): Coastal Parcel Data Set and Shoreline Change Mapping for CERL	10/1/2016	9/30/2017
9/23/2016	AWD05394	US Department of Agriculture	Cygler,Azure	WCPI	74946	33	\$24,732.18	CI - Exploring Northeastern Market Opportunities for Farmed Kelp (sea vegetables)	9/30/2016	9/29/2018
10/3/2016	AWD05531	US Agcy for International Dev.	Kent,Karen	WCPI	1375000	50	\$687,500.00	CI - GSO/CI Comfish Plus Project	10/1/2016	9/30/2018

7/12/2016	AWD04129	US Department of Agriculture	Kent,Karen L	AWPI	222689.27	90	\$200,420.34	CI- WEST AFRICA ANALYTICAL SUPPORT SERVICES AND EVALUATIONS FOR	3/1/2014	3/19/2019
10/18/2016	AWD05481	RI Coastal Res Mgt. Council	Mccann,Jennifer	AWPI	20000	100	\$20,000.00	CI - Update and Revision of the Metro Bay SAMP Documents and 1978 Energy Amendments	7/1/2016	7/30/2017
10/21/2016	AWD05464	US Dept of Interior	Mccann,Jennifer	AWPI	314300	23	\$72,289.00	CI - Identifying Indicators of Offshore Wind Benefits: An Analysis of the Effects of the Block Island Wind Farm on Rhode Island Recreation and Tourism	9/21/2016	12/31/2018
11/2/2016	AWD05550	Western Indian Ocean Marine Science Asso	Ricci,Glenn	AWPI	161368.56	50	\$80,684.28	CI - Strengthening East Africa Marine Protected Areas-WIO State	10/1/2016	9/30/2018
10/4/2016	AWD04536	US Agcy for International Dev.	Robadue Jr,Donald	WCPI	2200000	50	\$1,100,000.00	CI - Ghana Sustainable Fisheries Management Project	1/1/2014	10/31/2019
8/15/2016	AWD04325	US Dept of Interior	Robadue Jr,Donald D	AWPI	49999.78	100	\$49,999.78	ci - Guidance for the National Park Service in Conducting Vulnerability assessments in the Northeast Region	7/30/2014	12/31/2018
11/7/2016	AWD05213	University of Connecticut STORRS	Rubinoff,Pamela	AWPI	16862	100	\$16,862.00	Island Storm and Sea Level Rise Preparedness	9/1/2015	8/31/2017
9/23/2016	AWD05394	US Department of Agriculture	Smythe,Tiffany	WCPI	74946	33	\$24,732.18	CI - Exploring Northeastern Market Opportunities for Farmed Kelp (sea vegetables)	9/30/2016	9/29/2018
10/21/2016	AWD05464	US Dept of Interior	Smythe,Tiffany	WCPI	314300	23	\$72,289.00	CI - Identifying Indicators of Offshore Wind Benefits: An Analysis of the Effects of the Block Island Wind Farm on Rhode Island Recreation and Tourism	9/21/2016	12/31/2018
10/3/2016	AWD05531	US Agcy for International Dev.	Tobey,James	AWPI	1375000	50	\$687,500.00	CI - GSO/CI Comfish Plus Project	10/1/2016	9/30/2018
12/21/2016	AWD05346	Mass Audubon	Tobey,James	AWPI	278076	60	\$166,845.60	CI - US EPA Region 1 Southeast New England Program for Coastal Watershed	10/1/2016	9/30/2019
11/2/2016	AWD05550	Western Indian Ocean Marine Science Asso	Torell,Elin	WCPI	161368.56	50	\$80,684.28	CI - Strengthening East Africa Marine Protected Areas-WIO State	10/1/2016	9/30/2018

### GSO Facilities

AWARD DATE	AWARD ID	SPONSOR	INVESTIGATOR	ROLE	AWARD AMT	CREDIT	PORTION AMT	TITLE	BEGIN DATE	END DATE
7/27/2016	AWD04094	US Dept of Commerce NOAA	Murray,Cynthia J	AWPI	2200	100	\$2,200.00	A Proposal for the Support of Continuing and New Activities of the National Sea Grant Library	3/1/2014	2/28/2018

### GSO Faculty

AWARD DATE	AWARD ID	SPONSOR	INVESTIGATOR	ROLE	AWARD AMT	CREDIT	PORTION AMT	TITLE	BEGIN DATE	END DATE
9/12/2016	AWD04236	National Science Foundation	Alberts,Jonathan	AWPI	144970	50	\$72,485.00	UNIVERSIEY-NATIONAL OCEANOGRAPHIC LABORATORY SYSTEM	5/1/2014	4/30/2019

10/31/2016	AWD04236	National Science Foundation	Alberts,Jonathan	AWPI	978690	50	\$489,345.00	UNIVERSIEY-NATIONAL OCEANOGRAPHIC LABORATORY SYSTEM	5/1/2014	4/30/2019
7/19/2016	AWD05057	National Science Foundation	Campbell,Robert	AWPI	84712	100	\$84,712.00	CI - Collab. Research: Mechanisms Supporting Persistence of Benthic Biological Hotspots in the Pacific Arctic Region	8/1/2016	7/31/2019
10/20/2016	AWD04986	Woods Hole Group, Inc.	Campbell,Robert	AWPI	4000	100	\$4,000.00	CI - Formation, Extent and Fate of Phytoplankton Blooms in Changing Arctic Seasonal and Perennial Ice Coverage - A Study Combining Modeling, Field and	3/11/2015	3/10/2017
10/27/2016	AWD05398	National Science Foundation	Campbell,Robert	AWPI	565065	100	\$565,065.00	CI - Collab. Research: The Importance of Shelf Break Upwelling to Upper Trophic Level Ecology in the Western Beaufort Sea	10/1/2016	9/30/2019
7/15/2016	AWD05285	DUKE UNIVERSITY	Coleman,Dwight	AWPI	35960	100	\$35,960.00	EAGER: Developing At-Sea & Telepresence-Led Deep-Submergence Science Leadership	6/15/2016	5/31/2017
7/21/2016	AWD05443	OCEAN EXPLORATION TRUST	Coleman,Dwight	AWPI	85000	100	\$85,000.00	OET Partnership with the URI Inner Space Center to Support Systematic Ocean Exploration - 2016-2017 Season	7/1/2016	6/30/2017
7/25/2016	AWD05401	Naval Undersea Warfare Center	Coleman,Dwight	AWPI	20000	100	\$20,000.00	NUWC Collaboration with the URI Inner Space Center for Educational Outreach	7/22/2016	7/21/2017
8/30/2016	AWD05119	National Science Foundation	Coleman,Dwight	WCPI	1702772	15	\$255,415.80	CI - Northwest Passage Project	7/1/2016	8/31/2019
11/4/2016	AWD05658	University of California, San Diego	Coleman,Dwight	AWPI	31771.84	100	\$31,771.84	Sally Ride Telepresence Support	11/14/2016	4/30/2017
7/12/2016	AWD05127	US Dept of Commerce NOAA	Collie,Jeremy	AWPI	155026	100	\$155,026.00	The Other (EBFM): Designing Ecosystem-Based Marketing Strategies to Complement Ecosystem-Based Fisheries Management	9/1/2016	8/31/2018
11/18/2016	AWD05692	RI Dept of Environ Magt	Collie,Jeremy	AWPI	78639	100	\$78,639.00	PILOT STUDY: BIOLOGICAL AND FISHERY CHARACTERISTICS OF THE JONAH CRAB	3/1/2016	8/31/2018
8/2/2016	AWD05195	National Science Foundation	Cormier,Marie H	AWPI	390820	65	\$254,033.00	Collab. Research: Interactions between Transpressional Structures at the N. American-Caribbean Plate Boundary: Geophysical Imaging	11/1/2016	10/31/2019
7/22/2016	AWD05220	University of Southern California	D'Hondt,Steven	AWPI	110865	100	\$110,865.00	C-DEBI Postdoctoral Fellow: Discrimination of Detrital Genes from Marine Sediments	1/1/2017	12/31/2017
9/19/2016	AWD05287	National Science Foundation	D'Hondt,Steven	AWPI	738837	45	\$332,476.65	An Autonomous Ocean Profiling and Water Sampling System for 0 to 11 km of Water Depth	7/1/2016	8/31/2018
9/12/2016	AWD04236	National Science Foundation	Desilva,Annette	WCPI	144970	50	\$72,485.00	UNIVERSIEY-NATIONAL OCEANOGRAPHIC LABORATORY SYSTEM	5/1/2014	4/30/2019
10/31/2016	AWD04236	National Science Foundation	Desilva,Annette	WCPI	978690	50	\$489,345.00	UNIVERSIEY-NATIONAL OCEANOGRAPHIC LABORATORY SYSTEM	5/1/2014	4/30/2019
8/2/2016	AWD04733	National Science Foundation	Donohue,Kathleen	WCPI	68886	50	\$34,443.00	Collab. Research: The Oleander Project High Resolution Observations of the Dynamic Ocean Between New Jersey and Bermuda	9/15/2015	8/31/2020
9/6/2016	AWD04718	National Science Foundation	Donohue,Kathleen	WCPI	137727	40	\$55,090.80	REU Site: SURFO-Summer Undergraduate Research Fellowships in Oceanography	3/15/2015	2/28/2018
9/22/2016	AWD04497	US of Office of Naval Research	Ginis,Isaac	AWPI	46333.08	100	\$46,333.08	GFDN (Navy) Maintenance and Support: 3 year 2014-2017	9/1/2014	9/22/2017

10/13/2016	AWD04989	University of North Carolina - CH	Ginis,Isaac	WCPI	436036	52	\$226,738.72	CI - Dept. of Homeland Security Coastal Resilience Center of Excellence Projects	1/1/2016	6/30/2017
10/18/2016	AWD05152	Lamont-Doherty Earth Observatory	Graham,Rebecca	AWPI	71637	100	\$71,637.00	Participation in IODP Expedition #361 - Southern African Climates	2/1/2016	2/28/2018
11/15/2016	AWD05152	Lamont-Doherty Earth Observatory	Graham,Rebecca	AWPI	18717	100	\$18,717.00	Participation in IODP Expedition #361 - Southern African Climates	2/1/2016	2/28/2018
7/21/2016	AWD04940	US Dept of Commerce NOAA	Kenney,Robert D	AWPI	99999	100	\$99,999.00	Maintain and Curate the North Atlantic Right Whale Sightings Database.	9/1/2015	8/31/2017
9/16/2016	AWD05292	National Science Foundation	Kincaid,Christopher	AWPI	357747	50	\$178,873.50	4D Physical Models of Migrating and Mid-Ocean Ridges: Implications for Shallow Mantle Flow, Melt Distribution and Seafloor topography	8/1/2016	8/31/2019
8/2/2016	AWD05195	National Science Foundation	King,John	WCPI	390820	35	\$136,787.00	Collab. Research: Interactions between Transpressional Structures at the N. American-Caribbean Plate Boundary: Geophysical Imaging	11/1/2016	10/31/2019
8/16/2016	AWD04946	RI Dept. of Transportation	King,John	WCPI	6640	33	\$2,191.20	Study of Scour at Rhode Island Bridges	1/1/2016	12/31/2017
8/31/2016	AWD04161	US Dept of Interior	King,John	AWPI	200000	67	\$134,000.00	CI IDENTIFICATION OF SAND/GRAVEL RESOURCES IN RHODE ISLAND WATERS	7/29/2014	7/31/2018
10/18/2016	AWD05452	RI Coastal Res Mgt.Council	King,John	WCPI	219890	37	\$81,359.30	CI - HUD III-Shoreline Change Special Area Management Plan (Beach SAMP): Coastal Parcel Data Set and Shoreline Change Mapping for CERL	10/1/2016	9/30/2017
10/6/2016	AWD05580	Environment & Climate Change Canada	Lohmann,Rainer	AWPI	6453	100	\$6,453.00	Preparation and Analysis of Passive Samplers for Organic Contaminants in Lakes and Seawater	9/14/2016	1/15/2017
8/30/2016	AWD05119	National Science Foundation	Loose,Brice	WCPI	1702772	15	\$255,415.80	CI - Northwest Passage Project	7/1/2016	8/31/2019
9/6/2016	AWD04718	National Science Foundation	Maranda,Lucie	AWPI	137727	40	\$55,090.80	REU Site: SURFO-Summer Undergraduate Research Fellowships in Oceanography	3/15/2015	2/28/2018
7/21/2016	AWD04719	NatAeronautics & Space Admin	Menden-Deuer,Susanne	AWPI	252523	100	\$252,523.00	CI - North Atlantic Plankton Population Dynamics: Quantifying the Predictive Values of Temperature, Light and Hyperspectral Ocean Color Data	7/1/2015	6/30/2017
10/20/2016	AWD05590	Massachusetts Institute of Technology	Mouw,Colleen B	AWPI	57846	100	\$57,846.00	Assessing Ecosystem Vulnerability to Climate Change through Optics, Imagery and Models	8/25/2016	8/24/2017
12/16/2016	AWD05677	National Science Foundation	Mouw,Colleen B	AWPI	29511	100	\$29,511.00	Collab. Research: Continuation and Enhancement of MPOWIR	12/15/2016	3/31/2018
12/12/2016	AWD05643	National Science Foundation	Omand,Melissa	AWPI	59710	100	\$59,710.00	Collab. Research: Particle-Specific DNA Sequencing to Directly Observe Ecological Mechanisms of the Biological Pump	11/1/2016	11/30/2018
8/5/2016	AWD05354	NERACOOS	Oviatt,Candace	WCPI	59730	50	\$29,865.00	CI - Data Transfer to NERACOOS from NBFSSMN Stations Operated by URI/GSO	6/1/2016	5/31/2017
9/1/2016	AWD05496	Commonwealth of Massachusetts	Oviatt,Candace	WCPI	61331	50	\$30,665.50	CI - Expansion of the Narragansett Bay Fixed Site Monitoring Network in Mt. Hope Bay	8/25/2016	6/30/2017
9/2/2016	AWD05326	National Science Foundation	Pockalny,Robert	AWPI	19709	100	\$19,709.00	Collab. Research: A Marine Geology and Geophysics Training Cruise Onboard the R/V Sikuliaq for Potential Chief Scientists	9/1/2016	8/31/2017

9/16/2016	AWD05292	National Science Foundation	Pockalny,Robert	WCPI	357747	50	\$178,873.50	4D Physical Models of Migrating and Mid-Ocean Ridges: Implications for Shallow Mantle Flow, Melt Distribution and Seafloor topography	8/1/2016	8/31/2019
9/19/2016	AWD05287	National Science Foundation	Pockalny,Robert	WCPI	738837	10	\$73,883.70	An Autonomous Ocean Profiling and Water Sampling System for 0 to 11 km of Water Depth	7/1/2016	8/31/2018
8/19/2016	AWD05328	National Science Foundation	Roman,Christopher	AWPI	213493	100	\$213,493.00	Collab. Research: Quantifying the Biological, Chemical, and Physical Linkages Between Chemosynthetic Communities and the Surrounding	10/1/2016	9/30/2019
9/19/2016	AWD05287	National Science Foundation	Roman,Christopher	WCPI	738837	45	\$332,476.65	An Autonomous Ocean Profiling and Water Sampling System for 0 to 11 km of Water Depth	7/1/2016	8/31/2018
11/16/2016	AWD05597	OCEAN EXPLORATION TRUST	Roman,Christopher	AWPI	34537	100	\$34,537.00	High Resolution Imaging System Development and Data processing for the E/V Nautilus	10/1/2016	12/31/2016
8/2/2016	AWD04733	National Science Foundation	Rosby,Hans T	AWPI	68886	50	\$34,443.00	Collab. Research: The Oleander Project High Resolution Observations of the Dynamic Ocean Between New Jersey and Bermuda	9/15/2015	8/31/2020
9/1/2016	AWD05333	National Science Foundation	Rynearson,Tatiana	AWPI	642473	100	\$642,473.00	CI - Dimensions: Collab. Research: Genetic, Functional and Phylogenetic Diversity Determines Marine Phytoplankton Community Responses to Changing	10/1/2016	9/30/2020
8/30/2016	AWD05119	National Science Foundation	Scowcroft,Gail	AWPI	1702772	70	\$1,191,940.40	CI - Northwest Passage Project	7/1/2016	8/31/2019
12/12/2016	AWD05136	US of Office of Naval Research	Scowcroft,Gail	AWPI	100000	100	\$100,000.00	Discovery of Sound in the Sea	1/1/2016	12/31/2017
9/6/2016	AWD04718	National Science Foundation	Smith,David	WCPI	137727	20	\$27,545.40	REU Site: SURFO-Summer Undergraduate Research Fellowships in Oceanography	3/15/2015	2/28/2018
8/5/2016	AWD05354	NERACOOS	Stoffel,Heather	AWPI	59730	50	\$29,865.00	CI - Data Transfer to NERACOOS from NBFSMN Stations Operated by URI/GSO	6/1/2016	5/31/2017
9/1/2016	AWD05496	Commonwealth of Massachusetts	Stoffel,Heather	AWPI	61331	50	\$30,665.50	CI - Expansion of the Narragansett Bay Fixed Site Monitoring Network in Mt. Hope Bay	8/25/2016	6/30/2017
8/5/2016	AWD05001	Rutgers University	Ullman,David	AWPI	15000	100	\$15,000.00	MARACOOS: Preparing for a Changing Mid-Atlantic	6/1/2016	5/31/2017
7/5/2016	AWD05438	KOREA INSTITUTE OF OCEAN SCIENCE & TECHN	Watts,D Randolph	AWPI	23264	100	\$23,264.00	Kuroshio Studies at the Korean Institute of Ocean Science and Technology (KIOST): Current Meter and Accessories	6/20/2016	5/20/2018
7/5/2016	AWD05439	KOREA INSTITUTE OF OCEAN SCIENCE & TECHN	Watts,D Randolph	AWPI	42457	100	\$42,457.00	Kuroshio Studies at the Korean Institute of Ocean Science and Technology (KIOST) Pressure-Recording Inverted Echo Sounder (C-PIES-Ready)	6/20/2016	5/20/2018
7/15/2016	AWD05442	University of Miami	Watts,D Randolph	AWPI	970	100	\$970.00	PIES Board SN222 Repair for University of Miami	5/30/2016	10/31/2016
8/16/2016	AWD05512	Second Institute of Oceanography, State	Watts,D Randolph	AWPI	11765	100	\$11,765.00	PIES Accessories for R.X. Zhao, SIO.L-Hangzhou	8/1/2016	7/31/2017
10/4/2016	AWD05579	University of Miami	Watts,D Randolph	AWPI	3478	100	\$3,478.00	AWD 05666 (0006101) has replaced this award... created under NOAA rather than Univ of Miami 11-2016	9/30/2016	3/31/2018
10/4/2016	AWD05666	US Dept of Commerce NOAA	Watts,D Randolph	AWPI	3478	100	\$3,478.00	PIES: RELEASE ACCESSORIES FOR CIMAS- UNIV OF MIAMI	9/30/2016	3/31/2018

10/31/2016	AWD05627	Massachusetts Institute of Technology	Watts,D Randolph	AWPI	476783	100	\$476,783.00	Equipment for Arctic Circulation Studies (SODA Project) - CPIES	10/1/2016	9/30/2019
11/14/2016	AWD05671	University of Gothenberg	Watts,D Randolph	AWPI	16800	100	\$16,800.00	Glacier-Melt Studies Using Four TPOPs	11/1/2016	10/31/2019
11/14/2016	AWD05670	University of Miami	Watts,D Randolph	AWPI	61140	100	\$61,140.00	Equipment for Agulhas Transport Study - 1 CPIES	11/1/2016	10/31/2019
12/5/2016	AWD05019	Massachusetts Institute of Technology	Watts,D Randolph	AWPI	47049	100	\$47,049.00	Investigating flow features near abrupt topography in the Mariana Basin: PIES for the FLEAT Program	10/1/2015	9/30/2017

### GSO Marine Office

AWARD DATE	AWARD ID	SPONSOR	INVESTIGATOR	ROLE	AWARD AMT	CREDIT	PORTION AMT	TITLE	BEGIN DATE	END DATE
7/5/2016	AWD05290	US of Office of Naval Research	Glennon,Thomas	AWPI	4775	50	\$2,387.50	Shiptime and Marine Technician Support for the RV Endeavor	6/1/2016	5/31/2017
7/29/2016	AWD05498	University of Florida	Glennon,Thomas	AWPI	100000	100	\$100,000.00	RV Endeavor Charter with the Florida Institute of Oceanography - cy 2017	1/1/2017	12/31/2017
9/6/2016	AWD03430	National Science Foundation	Glennon,Thomas J	WCPI	72376	50	\$36,188.00	OCEANOGRAPHIC TECHNICAL SERVICES FOR R/V ENDEAVOR 2012	6/1/2012	5/31/2018

### GSO Marine Technicians

AWARD DATE	AWARD ID	SPONSOR	INVESTIGATOR	ROLE	AWARD AMT	CREDIT	PORTION AMT	TITLE	BEGIN DATE	END DATE
7/5/2016	AWD05290	US of Office of Naval Research	Fanning III,William	WCPI	4775	50	\$2,387.50	Shiptime and Marine Technician Support for the RV Endeavor	6/1/2016	5/31/2017
9/6/2016	AWD03430	National Science Foundation	Fanning III,William L	AWPI	72376	50	\$36,188.00	OCEANOGRAPHIC TECHNICAL SERVICES FOR R/V ENDEAVOR 2012	6/1/2012	5/31/2018

### GSO Office of Marine Programs

AWARD DATE	AWARD ID	SPONSOR	INVESTIGATOR	ROLE	AWARD AMT	CREDIT	PORTION AMT	TITLE	BEGIN DATE	END DATE
9/6/2016	AWD03680	National Science Foundation	Scowcroft,Gail A	AWPI	49940	100	\$49,940.00	CLIMATE CHANGE EDUCATION PARTNERSHIP ALLIANCE: NATIONAL OFFICE	6/15/2013	5/31/2018

GSO Research

AWARD DATE	AWARD ID	SPONSOR	INVESTIGATOR	ROLE	AWARD AMT	CREDIT	PORTION AMT	TITLE	BEGIN DATE	END DATE
9/23/2016	AWD05394	US Department of Agriculture	Mccann,Jennifer	AWPI	74946	34	\$25,481.64	CI - Exploring Northeastern Market Opportunities for Farmed Kelp (sea vegetables)	9/30/2016	9/29/2018

GSO Rhode Island Sea Grant

AWARD DATE	AWARD ID	SPONSOR	INVESTIGATOR	ROLE	AWARD AMT	CREDIT	PORTION AMT	TITLE	BEGIN DATE	END DATE
8/3/2016	AWD03971	US Dept of Commerce NOAA	Nixon,Dennis W	AWPI	50183	100	\$50,183.00	RHODE ISLAND SEA GRANT 2014-2018 OMNIBUS	9/1/2014	1/31/2018

Awards for College of Pharmacy

From: 7/1/2016 To: 12/31/2016

Investigator Award Total: \$1,469,202.10

Biomedical & Pharm. Sciences

AWARD DATE	AWARD ID	SPONSOR	INVESTIGATOR	ROLE	AWARD AMT	CREDIT	PORTION AMT	TITLE	BEGIN DATE	END DATE
10/17/2016	AWD05602	Bay State Medical Center	Akhlaghi,Fatemeh	AWPI	58130	100	\$58,130.00	Implementation to Motivate Physician Response to Opioid Dependence in HIV Settings	10/1/2015	3/31/2017
9/27/2016	AWD05577	University of Connecticut Avery Point	Chen,Xinyuan	AWPI	53284	100	\$53,284.00	A Peptide Nanoparticle Nicotine Vaccine	9/1/2016	8/31/2016
11/16/2016	AWD05668	Pfizer Inc	Deng,Ruitang	AWPI	78334	100	\$78,334.00	Interplay of Bile Acid and Estrogen Signaling in Liver Disorders	11/9/2016	11/30/2017
11/22/2016	AWD05682	Amag Pharmaceuticals	Deng,Ruitang	AWPI	75000	100	\$75,000.00	Interplay of Bile Acid and Estrogen Signaling in Liver Disorders	11/18/2016	11/17/2018
8/29/2016	AWD04659	University of Maryland	Rowley,David	AWPI	84215	34	\$28,633.10	Safe Feedstocks for Bivalve Aquaculture	9/1/2015	8/31/2017
8/10/2016	AWD05490	National Institute of Health	Yan,Bingfang	AWPI	276300	100	\$276,300.00	Signaling of the Pregnane X Receptor	9/1/2016	8/31/2017
8/29/2016	AWD05575	National Institute of Health	Yan,Bingfang	AWPI	99999	100	\$99,999.00	Signaling of the Pregnane X Receptor Supplement	9/1/2016	8/31/2017
9/28/2016	AWD04314	National Institute of Health	Yan,Bingfang	AWPI	99999	100	\$99,999.00	Signaling of the Pregnane X Receptor During Endoplasmic Reticulum Stress	9/1/2014	8/31/2016

9/28/2016	AWD04314	National Institute of Health	Yan,Bingfang	AWPI	276300	100	\$276,300.00	Signaling of the Pregnane X Receptor During Endoplasmic Reticulum Stress	9/1/2014	8/31/2016
-----------	----------	------------------------------	--------------	------	--------	-----	--------------	--	----------	-----------

### Pharmacy Practice

AWARD DATE	AWARD ID	SPONSOR	INVESTIGATOR	ROLE	AWARD AMT	CREDIT	PORTION AMT	TITLE	BEGIN DATE	END DATE
8/15/2016	AWD04875	Boston University Medical Center	Bratberg,Jeffrey	AWPI	12106	100	\$12,106.00	Advancing Patient Safety Implementation through Pharmacy - Based Opioid Medication Use Research	8/1/2016	7/31/2017
11/28/2016	AWD05551	Harvard University	Buchanan,Ashley	AWPI	3838	100	\$3,838.00	A Comprehensive Translational Science Analytics Toolkit for the Global Health Agenda Today	9/1/2016	7/31/2017
11/29/2016	AWD05563	Harvard University	Buchanan,Ashley	AWPI	25298	100	\$25,298.00	New Methods for the Design and Evaluation of Large HIV Prevention Interventions	9/1/2016	5/31/2017
12/8/2016	AWD05551	Harvard University	Buchanan,Ashley	AWPI	27035	100	\$27,035.00	A Comprehensive Translational Science Analytics Toolkit for the Global Health Agenda Today	9/1/2016	8/31/2017
11/2/2016	AWD05561	RI Department of Corrections	Marcoux,Rita	AWPI	157444	50	\$78,722.00	Pharmacy Program Oversight/Utilization Review	1/1/2017	12/31/2017
11/2/2016	AWD05561	RI Department of Corrections	Szumita,Lisa B	WCPI	157444	50	\$78,722.00	Pharmacy Program Oversight/Utilization Review	1/1/2017	12/31/2017
11/4/2016	AWD04515	Brown University	Temkin,Cynthia	AWPI	197502	100	\$197,502.00	The Rhode Island Center for Clinical and Transitional Science	7/1/2016	4/30/2017

## Awards for Research & Economic Development

From: 7/1/2016 To: 12/31/2016

Investigator Award Total: \$1,480,865.00

### Research

AWARD DATE	AWARD ID	SPONSOR	INVESTIGATOR	ROLE	AWARD AMT	CREDIT	PORTION AMT	TITLE	BEGIN DATE	END DATE
7/21/2016	AWD03058	National Science Foundation	Bothun,Geoffrey	AWPI	1440481	100	\$1,440,481.00	Infrastructure to advance life sciences in the ocean state	9/1/2012	7/31/2017



Transportation Center

AWARD DATE	AWARD ID	SPONSOR	INVESTIGATOR	ROLE	AWARD AMT	CREDIT	PORTION AMT	TITLE	BEGIN DATE	END DATE
7/21/2016	AWD05444	Calstart	Lucht,Wendy	AWPI	10000	100	\$10,000.00	Multi-State ZEV Procurement Process	3/15/2016	3/14/2018
8/25/2016	AWD05532	RI Dept. of Transportation	Rosen,Deborah	AWPI	30384	100	\$30,384.00	The Summer Transportation Institute 2016	7/1/2016	8/31/2016

Awards for Vice President Administration

From: 7/1/2016 To: 12/31/2016

Investigator Award Total: \$24,923.00

Police

AWARD DATE	AWARD ID	SPONSOR	INVESTIGATOR	ROLE	AWARD AMT	CREDIT	PORTION AMT	TITLE	BEGIN DATE	END DATE
9/16/2016	AWD05572	RI Dept. of Transportation	Ricci,Paul N	AWPI	24923	100	\$24,923.00	E-Citation and Race Data Collection	10/1/2015	9/30/2016