

2014

# Division of Research and Economic Development Monthly Report for September 2014

URI Division of Research and Economic Development

Follow this and additional works at: [http://digitalcommons.uri.edu/researchecondev\\_reports](http://digitalcommons.uri.edu/researchecondev_reports)

---

## Recommended Citation

URI Division of Research and Economic Development, "Division of Research and Economic Development Monthly Report for September 2014" (2014). *Reports (Research and Economic Development)*. Paper 60.  
[http://digitalcommons.uri.edu/researchecondev\\_reports/60](http://digitalcommons.uri.edu/researchecondev_reports/60)

This Periodical is brought to you for free and open access by the Division of Research and Economic Development at DigitalCommons@URI. It has been accepted for inclusion in Reports (Research and Economic Development) by an authorized administrator of DigitalCommons@URI. For more information, please contact [digitalcommons@etal.uri.edu](mailto:digitalcommons@etal.uri.edu).

**Table 1. Awards processed by the Office of Sponsored Projects Review FY11 through September FY15 YTD**

	FY11				FY12			
	Number		Amount Awarded		Number		Amount Awarded	
Month	Count	Cum. Ct.	Amount	Cum. Amt.	Count	Cum. Ct.	Amount	Cum. Amt.
July	39	39	\$10,965,465.50	\$10,965,465.50	35	35	\$3,995,132.47	\$3,995,132.47
August	33	72	\$15,250,958.36	\$26,216,423.86	53	88	\$16,018,070.93	\$20,013,203.40
September	60	132	\$5,472,552.34	\$31,688,976.20	51	139	\$7,524,251.09	\$27,537,454.49
October	49	181	\$5,666,653.80	\$37,355,630.00	27	166	\$2,640,230.72	\$30,177,685.21
November	18	199	\$3,988,117.24	\$41,343,747.24	18	184	\$2,118,331.08	\$32,296,016.29
December	25	224	\$5,631,904.26	\$46,975,651.50	26	210	\$7,124,885.17	\$39,420,901.46
January	33	257	\$4,417,243.69	\$51,392,895.19	30	240	\$5,494,105.33	\$44,915,006.79
February	34	291	\$6,955,551.25	\$58,348,446.44	39	279	\$4,939,567.93	\$49,854,574.72
March	28	319	\$4,405,035.94	\$62,753,482.38	44	323	\$9,496,521.94	\$59,351,096.66
April	45	364	\$7,439,520.72	\$70,193,003.10	44	367	\$5,791,581.04	\$65,142,677.70
May	44	408	\$10,694,786.50	\$80,887,789.60	36	403	\$8,649,283.33	\$73,791,961.03
June	44	452	\$11,767,652.47	\$92,655,442.07	71	474	\$21,212,788.30	\$95,004,749.33
<b>Total</b>	<b>452</b>	<b>452</b>	<b>\$92,655,442.07</b>	<b>\$92,655,442.07</b>	<b>474</b>	<b>474</b>	<b>\$95,004,749.33</b>	<b>\$95,004,749.33</b>

	FY13				FY14				FY15			
	Number		Amount Awarded		Number		Amount Awarded		Number		Amount Awarded	
Month	Count	Cum. Ct.	Amount	Cum. Amt.	Count	Cum. Ct.	Amount	Cum. Amt.	Count	Cum. Ct.	Amount	Cum. Amt.
July	18	18	\$2,130,245.92	\$2,130,245.92	39	39	\$4,139,716.95	\$4,139,716.95	55	55	\$9,315,387.14	\$9,315,387.14
August	51	69	\$13,973,655.37	\$16,103,901.29	50	89	\$10,961,168.50	\$15,100,885.45	43	98	\$11,819,564.05	\$21,134,951.19
September	27	96	\$3,729,908.56	\$19,833,809.85	44	133	\$13,495,443.00	\$28,596,328.45	59	157	\$11,798,949.59	\$32,933,900.78
October	39	135	\$6,553,741.92	\$26,387,551.77	30	163	\$4,306,251.98	\$32,902,580.43				
November	24	159	\$3,306,500.92	\$29,694,052.69	16	179	\$3,117,236.86	\$36,019,817.29				
December	18	177	\$2,790,458.11	\$32,484,510.80	29	208	\$2,366,159.91	\$38,385,977.20				
January	36	213	\$4,699,661.52	\$37,184,172.32	30	238	\$3,780,011.56	\$42,165,988.76				
February	43	256	\$6,131,201.28	\$43,315,373.60	30	268	\$2,076,599.68	\$44,242,588.44				
March	36	292	\$6,280,723.57	\$49,596,097.17	29	297	\$4,062,350.95	\$48,304,939.39				
April	22	314	\$1,799,922.54	\$51,396,019.71	28	325	\$4,427,811.05	\$52,732,750.44				
May	30	344	\$5,597,725.78	\$56,993,745.49	37	362	\$3,839,315.32	\$56,572,065.76				
June	50	394	\$19,534,036.04	\$76,527,781.53	34	396	\$12,209,552.37	\$68,781,618.13				
<b>Total</b>	<b>394</b>	<b>394</b>	<b>\$76,527,781.53</b>	<b>\$76,527,781.53</b>	<b>396</b>	<b>396</b>	<b>\$68,781,618.13</b>	<b>\$68,781,618.13</b>	<b>157</b>	<b>157</b>	<b>\$32,933,900.78</b>	<b>\$32,933,900.78</b>

Figure 1a. Cumulative totals of numbers of awards received FY11 through September FY15 YTD

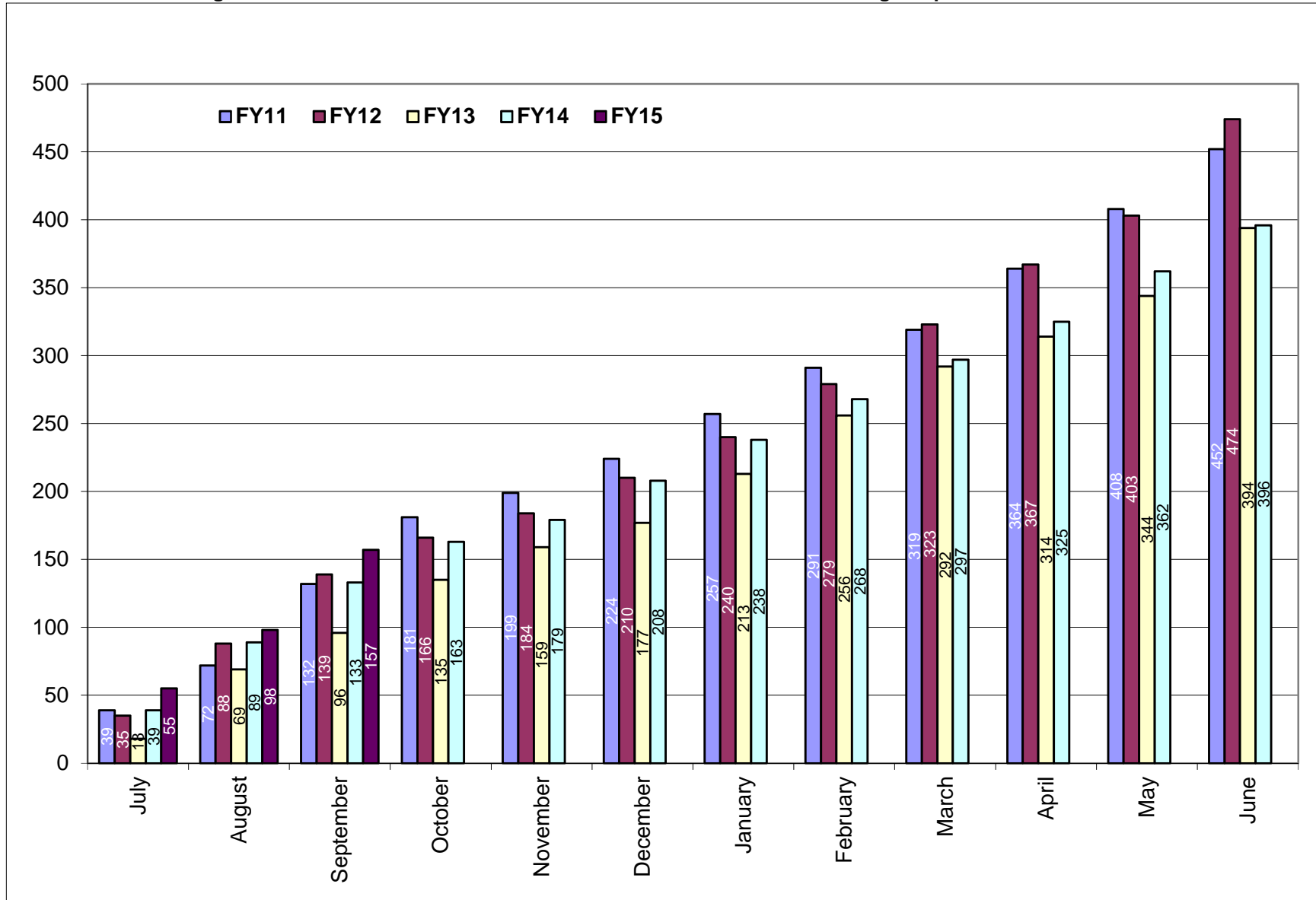
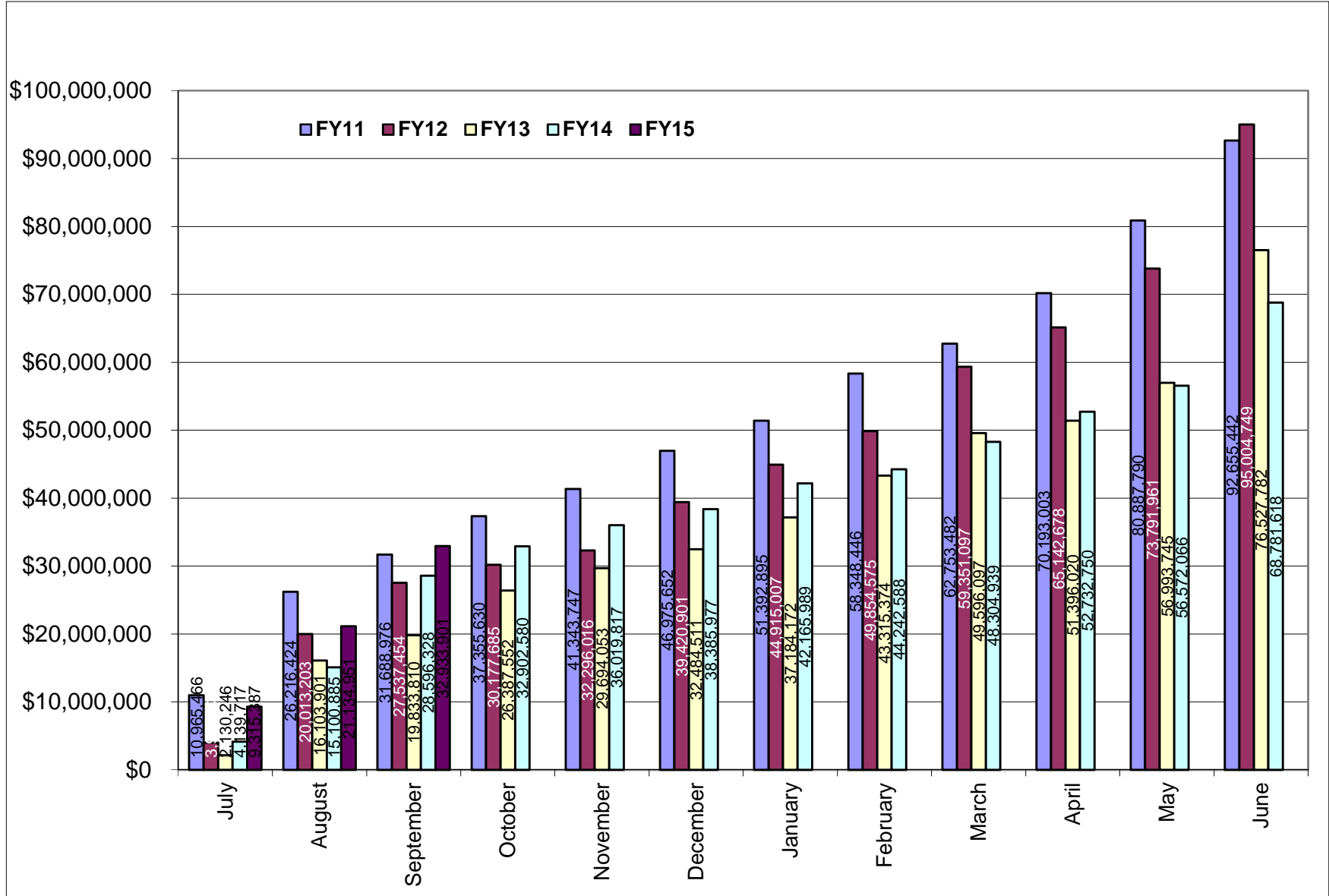


Figure 1b. Cumulative totals of award amounts received FY11 through September FY15 YTD



**Table 2. Summary of awards received by administrative and academic units FY11 through September FY15 YTD**

<b>Administrative</b>	<b><u>FY11</u></b>	<b><u>FY12</u></b>	<b><u>FY13</u></b>	<b><u>FY14</u></b>	<b><u>FY15 YTD</u></b>	<b><u>Totals</u></b>
PRESIDENT'S OFFICE	\$2,900.00	\$0.00	\$0.00	\$0.00	\$0.00	\$2,900.00
PROVOST	\$84,642.45	\$458,078.10	\$11,025.46	\$66,522.90	\$0.00	\$620,268.91
VP, ADMINISTRATION	\$2,093,977.64	\$1,847,788.00	\$486,099.64	\$934,258.37	\$120,000.00	\$5,482,123.65
VP, RESEARCH & ECON DEV	\$8,072,900.00	\$0.00	\$6,000,000.00	\$4,177,835.54	\$4,458,850.00	\$22,709,585.54
VP, STUDENT AFFAIRS	\$26,994.82	\$239,999.40	\$0.00	\$261,091.70	\$83,665.00	\$611,750.92
<b>Academic</b>						
ARTS & SCIENCES	\$14,719,616.34	\$13,506,337.60	\$10,217,827.48	\$5,711,150.38	\$5,459,325.18	\$49,614,256.98
BUSINESS ADMINISTRATION	\$108,472.45	\$26,200.00	\$30,264.83	\$72,332.00	\$222,212.00	\$459,481.28
CONTINUING EDUCATION	\$0.00	\$239,999.40	\$0.00	\$199,568.70	\$0.00	\$439,568.10
ENGINEERING	\$7,308,043.58	\$6,004,532.53	\$5,160,510.74	\$3,487,206.08	\$3,211,783.67	\$25,172,076.60
ENVIRONMENT & LIFE SCIENCES	\$21,932,032.49	\$26,590,123.59	\$18,531,363.71	\$18,991,950.49	\$8,832,305.13	\$94,877,775.41
GRADUATE SCHOOL	\$133,960.00	\$0.00	\$922.00	\$0.00	\$0.00	\$134,882.00
HUMAN SCIENCE & SERVICES	\$2,754,906.50	\$3,316,524.30	\$860,634.00	\$3,435,616.97	\$1,144,189.32	\$11,511,871.09
NURSING	\$682,049.15	\$1,996,376.45	\$1,038,977.00	\$1,298,944.60	\$73,829.90	\$5,090,177.10
OCEANOGRAPHY	\$25,768,864.02	\$29,987,097.20	\$28,261,624.70	\$22,981,661.90	\$6,654,146.78	\$113,653,394.60
PHARMACY	\$8,875,242.63	\$10,456,774.36	\$5,928,531.97	\$6,963,909.80	\$2,673,593.80	\$34,898,052.56
UNIVERSITY COLLEGE	\$90,840.00	\$334,918.40	\$0.00	\$199,568.70	\$0.00	\$625,327.10
UNIVERSITY LIBRARY	NA	NA	NA	N/A	N/A	\$0.00
<b>Totals</b>	<b>\$92,655,442.07</b>	<b>\$95,004,749.33</b>	<b>\$76,527,781.53</b>	<b>\$68,781,618.13</b>	<b>\$32,933,900.78</b>	<b>\$365,903,491.84</b>

NA - Not Applicable (unit did not exist or was in another division)

**Table 2a. Awards received by departments within colleges FY11 through September FY15 YTD**

<u>College</u>	<u>FY11</u>	<u>FY12</u>	<u>FY13</u>	<u>FY14</u>	<u>FY15 YTD</u>	<u>Totals</u>
<b>Arts and Sciences</b>	<b>\$14,719,616.34</b>	<b>\$13,506,337.60</b>	<b>\$10,217,827.48</b>	<b>\$5,711,150.38</b>	<b>\$5,459,325.18</b>	<b>\$49,614,256.98</b>
ARCHEOLOGY AND APPLIED HISTORY	NA	NA	\$34,869.00	\$0.00	\$0.00	\$34,869.00
ART	\$0.00	\$0.00	\$0.00	\$0.00	\$0.00	\$0.00
CANCER PREV RESEARCH CTR (PSY)	\$3,136,818.20	\$4,716,924.55	\$3,209,160.65	\$1,236,062.50	\$998,908.20	\$13,297,874.10
CHEMISTRY	\$7,856,684.49	\$2,496,787.75	\$3,734,821.70	\$1,860,329.55	\$3,736,372.00	\$19,684,995.49
COMMUNICATION STUDIES	\$29,918.00	\$0.00	\$0.00	\$0.00	\$0.00	\$29,918.00
COMPUTER SCIENCE/STATISTICS	\$778,198.00	\$451,367.00	\$1,219,627.26	\$159,245.55	\$50,250.00	\$2,658,687.81
DEAN'S OFFICE	\$48,742.65	\$400,721.25	\$0.00	\$22,302.98	\$11,739.18	\$483,506.06
ECONOMICS	\$0.00	\$0.00	\$0.00	\$0.00	\$0.00	\$0.00
FEINSTEIN HUNGER CTR(DEAN'S OFFICE)	\$820,549.00	\$874,383.00	\$850,654.00	\$797,488.00	\$0.00	\$3,343,074.00
HISTORY	\$45,983.00	\$127,850.00	\$145,150.00	\$248,515.00	\$60,000.00	\$627,498.00
INTERNATIONAL ENGINEERING PROG	\$0.00	\$22,642.95	\$0.00	\$0.00	\$0.00	\$22,642.95
LANGUAGES	\$440,592.00	\$1,690,588.10	\$249,610.00	\$419,870.00	\$377,995.80	\$3,178,655.90
LIBRARY AND INFORMATION STUDIES	\$0.00	\$0.00	\$0.00	\$50,000.00	\$0.00	\$50,000.00
MATHEMATICS	\$0.00	\$52,945.00	\$245,849.87	\$108,832.55	\$0.00	\$407,627.42
PHYSICS	\$778,004.00	\$1,294,192.00	\$403,189.00	\$504,034.50	\$219,162.00	\$3,198,581.50
PSYCHOLOGY (EXCLUDES CPRC)	\$695,741.50	\$1,332,244.00	\$71,983.00	\$229,627.00	\$0.00	\$2,329,595.50
SOCIOLOGY/ANTHROPOLOGY	\$86,385.50	\$45,692.00	\$8,491.00	\$30,118.75	\$4,898.00	\$175,585.25
THEATRE	\$0.00	\$0.00	\$0.00	\$0.00	\$0.00	\$0.00
WOMEN'S STUDIES	\$2,000.00	\$0.00	\$0.00	\$0.00	\$0.00	\$2,000.00
WRITING AND RHETORIC	NA	NA	\$44,422.00	\$44,724.00	\$0.00	\$89,146.00
<b>Business Administration</b>	<b>\$108,472.45</b>	<b>\$26,200.00</b>	<b>\$30,264.83</b>	<b>\$72,332.00</b>	<b>\$222,212.00</b>	<b>\$459,481.28</b>
ACCOUNTING	\$0.00	\$0.00	\$0.00	\$0.00	\$0.00	\$0.00
DEAN'S OFFICE	\$0.00	\$0.00	\$0.00	\$0.00	\$222,212.00	\$222,212.00
FACULTY - INSTRUCTION	\$98,260.85	\$26,200.00	\$30,264.83	\$72,332.00	\$0.00	\$227,057.68
MANAGEMENT	\$10,211.60	\$0.00	\$0.00	\$0.00	\$0.00	\$10,211.60

NA - Not Applicable (department did not exist or was in another college)

<u>College</u>	<u>FY11</u>	<u>FY12</u>	<u>FY13</u>	<u>FY14</u>	<u>FY15 YTD</u>	<u>Totals</u>
<b>Continuing Education</b>	<b>\$0.00</b>	<b>\$239,999.40</b>	<b>\$0.00</b>	<b>\$199,568.70</b>	<b>\$0.00</b>	<b>\$439,568.10</b>
<b>Engineering</b>	<b>\$7,308,043.58</b>	<b>\$6,004,532.53</b>	<b>\$5,160,510.74</b>	<b>\$3,487,206.08</b>	<b>\$3,211,783.67</b>	<b>\$25,172,076.60</b>
CHEMICAL ENGINEERING	\$2,551,670.47	\$1,361,773.51	\$630,281.44	\$1,017,782.78	\$250,433.35	\$5,811,941.55
CIVIL/ENVIRONMENTAL ENGINEERING	\$141,223.20	\$300,522.00	\$710,021.53	\$679,694.60	\$93,860.40	\$1,925,321.73
DEAN'S OFFICE	\$0.00	\$65,999.00	\$0.00	\$107,273.00	\$0.00	\$173,272.00
ELECTRICAL ENGINEERING	\$1,968,203.00	\$1,721,659.56	\$1,751,239.87	\$221,001.00	\$2,184,837.12	\$7,846,940.55
ENGINEERING COMPUTER CTR				\$42,572.00	\$0.00	\$42,572.00
INTERNATIOANAL ENG PROGRAM					\$17,692.80	\$17,692.80
MECHANICAL & INDUSTRIAL SYS EGR	\$2,007,596.89	\$1,678,626.21	\$1,442,279.23	\$350,143.00	\$211,707.00	\$5,690,352.33
OCEAN ENGINEERING	\$639,350.02	\$875,952.25	\$626,688.67	\$1,068,739.70	\$453,253.00	\$3,663,983.64
<b>Environment and Life Sciences</b>	<b>\$21,932,032.49</b>	<b>\$26,590,123.59</b>	<b>\$18,531,363.71</b>	<b>\$18,991,950.49</b>	<b>\$8,832,305.13</b>	<b>\$94,877,775.41</b>
BIOLOGICAL SCIENCES	\$649,397.10	\$820,875.90	\$1,999,526.20	\$1,205,548.39	\$29,750.00	\$4,705,097.59
CELL AND MOLECULAR BIOLOGY	\$6,611,786.35	\$9,061,495.57	\$5,851,712.00	\$7,148,772.86	\$54,523.00	\$28,728,289.78
CELLS ACADEMIC UNIT 1					\$402,478.00	\$402,478.00
CELLS ACADEMIC UNIT 2					\$2,103,736.20	\$2,103,736.20
CELLS ACADEMIC UNIT 3				\$8,000.00	\$89,482.00	\$97,482.00
COMMUNITY PLANNING/AREA DEVEL	\$92,480.80	\$0.00	\$78,020.84	\$0.00	\$0.00	\$170,501.64
COOPERATIVE EXTENSION	\$569,047.10	\$840,103.00	\$1,007,000.18	\$303,615.00	\$38,775.00	\$2,758,540.28
DEAN'S OFFICE	\$3,904,844.00	\$3,412,524.00	\$3,088,215.00	\$1,671,668.43	\$820,098.15	\$12,897,349.58
ENV & NAT RESOURCE ECONOMICS	\$208,164.00	\$133,915.79	\$127,166.00	\$780,131.00	\$0.00	\$1,249,376.79
FISHERIES, ANIMAL & VET SCIENCE	\$1,686,520.87	\$1,054,268.52	\$1,450,456.60	\$958,878.97	\$237,834.78	\$5,387,959.74
GEOSCIENCES	\$281,612.50	\$6,072,649.00	\$1,314,837.49	\$566,452.87	\$569,250.00	\$8,804,801.86
MARINE AFFAIRS	\$186,751.47	\$92,447.00	\$123,508.00	\$3,837.00	\$0.00	\$406,543.47
NATURAL RESOURCES SCIENCE	\$4,475,448.00	\$2,510,809.59	\$1,459,896.00	\$3,014,274.22	\$3,536,174.00	\$14,996,601.81
NUTRITION AND FOOD SCIENCES	\$1,040,538.50	\$1,009,287.81	\$1,031,710.00	\$2,847,405.50	\$885,644.00	\$6,814,585.81
PLANT SCIENCE	\$2,225,441.80	\$1,581,747.41	\$999,315.40	\$483,366.25	\$64,560.00	\$5,354,430.86

<u>College</u>	<u>FY11</u>	<u>FY12</u>	<u>FY13</u>	<u>FY14</u>	<u>FY15 YTD</u>	<u>Totals</u>
<b>Graduate School</b>	<b>\$133,960.00</b>	<b>\$0.00</b>	<b>\$922.00</b>	<b>\$0.00</b>	<b>\$0.00</b>	<b>\$134,882.00</b>
<b>Human Science and Services</b>	<b>\$2,754,906.50</b>	<b>\$3,316,524.30</b>	<b>\$860,634.00</b>	<b>\$3,435,616.97</b>	<b>\$1,144,189.32</b>	<b>\$11,511,871.09</b>
CENTER FOR HUMAN SERVICES	\$0.00	\$0.00	\$0.00	\$524,558.00	\$0.00	\$524,558.00
COMMUNICATIVE DISORDERS	\$50,000.00	\$0.00	\$0.00	\$0.00	\$0.00	\$50,000.00
DEAN'S OFFICE	\$682,121.00	\$955,527.00	\$232,908.00	\$588,623.00	\$319,709.00	\$2,778,888.00
EDUCATION	\$1,487,628.00	\$939,834.00	\$535,658.00	\$1,552,868.92	\$560,201.00	\$5,076,189.92
GERONTOLOGY	\$207,449.50	\$864,295.30	\$0.00	\$267,077.10	\$263,349.10	\$1,602,171.00
HUMAN DEV/COUNSEL/FAM STUDIES	\$301,708.00	\$216,144.00	\$92,068.00	\$116,886.00	\$0.00	\$726,806.00
KINGSTON CHILD DEVELOPMENT CTR				\$7,162.95	\$930.22	\$8,093.17
KINESIOLOGY	\$0.00	\$0.00	\$0.00	\$0.00	\$0.00	\$0.00
PHYSICAL THERAPY	\$0.00	\$340,724.00	\$0.00	\$341,442.00	\$0.00	\$682,166.00
TEXTILES/FASHION MERCHAND/DESIGN	\$26,000.00	\$0.00	\$0.00	\$36,999.00	\$0.00	\$62,999.00
<b>Nursing</b>	<b>\$682,049.15</b>	<b>\$1,996,376.45</b>	<b>\$1,038,977.00</b>	<b>\$1,298,944.60</b>	<b>\$73,829.90</b>	<b>\$5,090,177.10</b>
<b>Oceanography</b>	<b>\$25,768,864.02</b>	<b>\$29,987,097.20</b>	<b>\$28,261,624.70</b>	<b>\$22,981,661.90</b>	<b>\$6,654,146.78</b>	<b>\$113,653,394.60</b>
<b>Pharmacy</b>	<b>\$8,875,242.63</b>	<b>\$10,456,774.36</b>	<b>\$5,928,531.97</b>	<b>\$6,963,909.80</b>	<b>\$2,673,593.80</b>	<b>\$34,898,052.56</b>
BIOMEDICAL & PHARMACEUTICAL SCI	\$6,958,789.13	\$5,743,988.01	\$5,029,978.72	\$5,544,086.00	\$725,667.00	\$24,002,508.86
CRIME LAB	\$843,740.00	\$77,228.21	\$27,172.25	\$33,092.00	\$0.00	\$981,232.46
DEAN'S OFFICE	\$0.00	\$0.00	\$0.00	\$0.00	\$0.00	\$0.00
ELDERLY MEDICATION	\$20,000.00	\$0.00	\$0.00	\$0.00	\$0.00	\$20,000.00
LIVING RITE/HEALTH POLICY	NA	\$3,161,892.60	\$0.00	\$811,359.00	\$1,437,115.20	\$5,410,366.80
PHARMACY PRACTICE	\$1,052,713.50	\$1,473,665.54	\$871,381.00	\$575,372.80	\$510,811.60	\$4,483,944.44



<u>College</u>	<u>FY11</u>	<u>FY12</u>	<u>FY13</u>	<u>FY14</u>	<u>FY15 YTD</u>	<u>Totals</u>
University College	\$90,840.00	\$334,918.40	\$0.00	\$199,568.70	\$0.00	\$625,327.10
University Library	NA	NA	NA	NA	NA	\$0.00

NA - Not Applicable (unit did not exist or was in another division)

**Table 2b. Awards received by units within administrative divisions FY11 through September FY15 YTD**

<u>Administrative Unit</u>	<u>FY11</u>	<u>FY12</u>	<u>FY13</u>	<u>FY14</u>	<u>FY15 YTD</u>	<u>Totals</u>
<b>President's Office</b>	<b>\$2,900.00</b>	<b>\$0.00</b>	<b>\$0.00</b>	<b>\$0.00</b>	<b>\$0.00</b>	<b>\$2,900.00</b>
<b>Provost</b>	<b>\$84,642.45</b>	<b>\$458,078.10</b>	<b>\$11,025.46</b>	<b>\$66,522.90</b>	<b>\$0.00</b>	<b>\$620,268.91</b>
ADVANCE OFFICE	\$0.00	\$0.00	\$0.00	\$0.00	\$0.00	\$0.00
LABOR RESEARCH CENTER	\$35,899.80	\$0.00	\$11,025.46	\$0.00	\$0.00	\$46,925.26
NETWORK AND TELECOM SERVICES	\$0.00	\$0.00	\$0.00	\$0.00	\$0.00	\$0.00
PROVOST	\$48,742.65	\$458,078.10	\$0.00	\$66,522.90	\$0.00	\$573,343.65
UNIVERSITY LIBRARY	\$0.00	\$0.00	\$0.00	\$0.00	\$0.00	\$0.00
<b>VP, Administration</b>	<b>\$2,093,977.64</b>	<b>\$1,847,788.00</b>	<b>\$486,099.64</b>	<b>\$934,258.37</b>	<b>\$120,000.00</b>	<b>\$5,482,123.65</b>
TRANSPORTATION CENTER	\$1,744,823.54	\$1,522,497.00	\$474,151.64	\$934,258.37	\$120,000.00	\$4,795,730.55
VICE PRESIDENT FOR ADMINISTRATION	\$349,154.10	\$325,291.00	\$11,948.00	\$0.00	\$0.00	\$686,393.10
<b>VP, Research &amp; Economic Development</b>	<b>\$8,072,900.00</b>	<b>\$0.00</b>	<b>\$6,000,000.00</b>	<b>\$4,177,835.54</b>	<b>\$4,458,850.00</b>	<b>\$8,636,685.54</b>
SMALL BUSINESS DEVELOPMENT CTR				\$172,400.00	\$458,850.00	\$631,250.00
VICE PRESIDENT FOR RESEARCH				\$4,005,435.54	\$4,000,000.00	\$8,005,435.54
<b>VP, Student Affairs</b>	<b>\$26,994.82</b>	<b>\$239,999.40</b>	<b>\$0.00</b>	<b>\$261,091.70</b>	<b>\$83,665.00</b>	<b>\$611,750.92</b>
CAMPUS LIFE	\$0.00	\$0.00	\$0.00	\$0.00	\$0.00	\$0.00
HEALTH SERVICES	\$0.00	\$0.00	\$0.00	\$0.00	\$0.00	\$0.00
STUDENT LIFE	\$0.00	\$0.00	\$0.00	\$61,523.00	\$0.00	\$61,523.00
TALENT DEVELOPMENT	\$26,994.82	\$239,999.40	\$0.00	\$199,568.70	\$0.00	\$466,562.92
VICE PRESIDENT STUDENT AFFAIRS					\$83,665.00	\$83,665.00

NA - Not Applicable (unit did not exist or was in another division)

**Report 1**

**Awards By Investigator & By Department & By College  
For Period July 01, 2014 thru September 30, 2014**

PRINCIPAL INVESTIGATOR	ROLE	DEPARTMENT	COLLEGE	TITLE SHORT	AWARD AMT	CREDIT %	PORTION AMT
<b>COLLEGE OF ARTS AND SCIENCES</b>							
Lebeau,Rebecca M	AWPI	Cancer Prevention Res. Ctr	A&S	CONTRACEPTIVE AWARENESS AND REPRODUCTIVE EDUCATION	\$648,016.00	100.00	\$648,016.00
Lipschitz,Jessica Morrow	AWPI	Cancer Prevention Res. Ctr	A&S	Expanding the foundation for population-based anxiety ma	\$17,735.00	100.00	\$17,735.00
Prochaska,James O	WCPI	Cancer Prevention Res. Ctr	A&S	Health Care innovation challenge	\$2,395,192.00	10.00	\$239,519.20
Robbins,Mark L	AWPI	Cancer Prevention Res. Ctr	A&S	TAILORED COMPUTER EDUCATION TO INCREASE LIVING...	\$93,638.00	100.00	\$93,638.00
Deboef,Brenton L	AWPI	Chemistry	A&S	Development of a New Molecular Imaging Platform:	\$75,000.00	100.00	\$75,000.00
Euler,William B	AWPI	Chemistry	A&S	Safe, Large-Format Lithium-Ion (Li-ion) Batteries for	\$15,000.00	100.00	\$15,000.00
Lucht,Brett L	AWPI	Chemistry	A&S	Development of Electrolytes for Lithium Ion Batteries	\$539,889.00	100.00	\$539,889.00
Lucht,Brett L	AWPI	Chemistry	A&S	Development of Electrolytes for Lithium Ion Batteries	\$568,698.00	100.00	\$568,698.00
Lucht,Brett L	AWPI	Chemistry	A&S	Development of Electrolytes for Lithium Ion Batteries	\$514,781.00	100.00	\$514,781.00
Lucht,Brett L	AWPI	Chemistry	A&S	Development of Electrolytes for Lithium Ion Batteries	\$496,543.00	100.00	\$496,543.00
Lucht,Brett L	AWPI	Chemistry	A&S	Development of Electrolytes for Lithium Ion Batteries	\$476,461.00	100.00	\$476,461.00
Oxley,Jimmie C	AWPI	Chemistry	A&S	SENSORS FOR TERRORISTS IED NETWORK DEFEAT	\$500,000.00	50.00	\$250,000.00
Oxley,Jimmie C	AWPI	Chemistry	A&S	AWARENESS AND LOCALIZATION OF EXPLOSIVES-RELATED THREATS	\$550,000.00	100.00	\$550,000.00
Smith,James L	WCPI	Chemistry	A&S	SENSORS FOR TERRORISTS IED NETWORK DEFEAT	\$500,000.00	50.00	\$250,000.00
Dipippo,Lisa	AWPI	Computer Science	A&S	Cyber Security Situational Awareness with Social-Aware	\$75,000.00	34.00	\$25,500.00
Katenka,Natallia	WCPI	Computer Science	A&S	Cyber Security Situational Awareness with Social-Aware	\$75,000.00	33.00	\$24,750.00
Puggioni,Gavino	OTH	Dean Arts & Sciences	A&S	TEMPORAL TRENDS IN OCEAN SURFACE	\$34,527.00	34.00	\$11,739.18
Jensen,John O.	AWPI	History	A&S	Develop a Historic Commercial Landscape Inventory...	\$60,000.00	100.00	\$60,000.00
Echevarria,Megan M	AWPI	Languages	A&S	Launching The International Engineering Program In Chile	\$53,856.00	80.00	\$43,084.80
He,Wayne Wenchao	AWPI	Languages	A&S	Chinese Language Prof. Pathways Program	\$319,911.00	100.00	\$319,911.00
Hedderich,Norbert	WCPI	Languages	A&S	Japan Foundation Salary Assistance Program for Full-Time	\$30,000.00	50.00	\$15,000.00
Andreev,Oleg A	WCPI	Physics	A&S	Mechanism and Uses of Transmembrane Helix Insertion	\$219,162.00	50.00	\$109,581.00
Reshetnyak,Yana O	AWPI	Physics	A&S	Mechanism and Uses of Transmembrane Helix Insertion	\$219,162.00	50.00	\$109,581.00
Bovy,Kristine M	AWPI	Sociology & Anthropology	A&S	CI-Collaborative Research:Impacts of abrupt environmenta	\$4,898.00	100.00	\$4,898.00
<b>COLLEGE TOTAL</b>							<b>\$5,459,325.18</b>
<b>COLLEGE OF BUSINESS ADMINISTRATION</b>							
Beckman,Judy K	AWPI	Dean-Coll-Bus-Adm	BUS	Academic Fellow, SEC Office of the Chief Accountant	\$222,212.00	\$100.00	\$222,212.00
<b>COLLEGE TOTAL</b>							<b>\$222,212.00</b>
<b>COLLEGE OF CONTINUING EDUCATION</b>							
<b>COLLEGE TOTAL</b>							<b>\$0.00</b>
<b>COLLEGE OF ENGINEERING</b>							
Bose,Arijit	WCPI	Chemical Engineering	EGR	Multifunctional stimuli-responsive core-shell nanopartic	\$5,927.00	50.00	\$2,963.50
Bothun,Geoffrey D	AWPI	Chemical Engineering	EGR	Multifunctional stimuli-responsive core-shell nanopartic	\$5,927.00	50.00	\$2,963.50
Bothun,Geoffrey D	AWPI	Chemical Engineering	EGR	Nanoparticle-bacterial membrane interactions and their	\$70,211.00	100.00	\$70,211.00
Greenfield,Michael L	AWPI	Chemical Engineering	EGR	Use of Recycled Engine Oil Bottoms in Asphalt	\$35,000.00	100.00	\$35,000.00
Lucia,Angelo	AWPI	Chemical Engineering	EGR	Modeling the phase behavior of CO2 sequestration	\$12,000.00	100.00	\$12,000.00
Lucia,Angelo	AWPI	Chemical Engineering	EGR	Modeling the phase behavior of CO2 sequestration	\$55,000.00	100.00	\$55,000.00

Park,Eugene	WCPI	Chemical Engineering	EGR	RI PEP-Rhode Island public energy partnership	\$34,247.00	5.00	\$1,712.35
Rivero-Hudec,Mercedes A	WCPI	Chemical Engineering	EGR	Building Bridges - Engineering Interactions for High...	\$141,166.00	50.00	\$70,583.00
Craver,Vinka A	WCPI	Civil and Environmental Engine	EGR	Launching The International Engineering Program In Chile	\$53,856.00	15.00	\$8,078.40
Craver,Vinka A	AWPI	Civil and Environmental Engine	EGR	The Use of Green Nanoparticles as a Biofouling - ...	\$22,882.00	100.00	\$22,882.00
Craver,Vinka A	AWPI	Civil and Environmental Engine	EGR	Water Quality Monitoring Facility and Program in San...	\$62,900.00	100.00	\$62,900.00
Fischer,Godi	WCPI	Elec, Computer & Bio Engr	EGR	Next Generation Data Storage Systems for Big Data...	\$37,500.00	50.00	\$18,750.00
He,Haibo	WCPI	Elec, Computer & Bio Engr	EGR	Reflex Tree - A New Computer and Communication...	\$850,000.00	40.00	\$340,000.00
He,Haibo	WCPI	Elec, Computer & Bio Engr	EGR	CI - Electromagnetic Field Impacts on Elasmobranch...	\$695,288.00	16.00	\$111,246.08
He,Haibo	WCPI	Elec, Computer & Bio Engr	EGR	CI - Electromagnetic Field Impacts on Elasmobranch...	\$103,369.00	16.00	\$16,539.04
Kay,Steven M	AWPI	Elec, Computer & Bio Engr	EGR	Optimal Radar Detection/Estimation inHomogeneous...	\$151,000.00	100.00	\$151,000.00
Sendag,Resit	AWPI	Elec, Computer & Bio Engr	EGR	SHF: Small: Pattern-Aware Design	\$450,000.00	100.00	\$450,000.00
Sendag,Resit	AWPI	Elec, Computer & Bio Engr	EGR	Infraastructure for Computer Architecture Research	\$63,804.00	100.00	\$63,804.00
Sun,Yan	WCPI	Elec, Computer & Bio Engr	EGR	Cyber Security Situational Awareness with Social-Aware	\$75,000.00	33.00	\$24,750.00
Wei,Tao	AWPI	Elec, Computer & Bio Engr	EGR	Reflex Tree - A New Computer and Communication...	\$850,000.00	40.00	\$340,000.00
Yang,Ken Q	AWPI	Elec, Computer & Bio Engr	EGR	INTRODUCING NEXT GENERATION I/O ACCELERATOR	\$479,998.00	100.00	\$479,998.00
Yang,Ken Q	WCPI	Elec, Computer & Bio Engr	EGR	Reflex Tree - A New Computer and Communication...	\$850,000.00	20.00	\$170,000.00
Yang,Ken Q	AWPI	Elec, Computer & Bio Engr	EGR	Next Generation Data Storage Systems for Big Data...	\$37,500.00	50.00	\$18,750.00
Berka,Sigrid	AWPI	International Engineering Prog	EGR	Japan Foundation Salary Assistance Program for Full-Time	\$30,000.00	50.00	\$15,000.00
Berka,Sigrid	WCPI	International Engineering Prog	EGR	Launching The International Engineering Program In Chile	\$53,856.00	5.00	\$2,692.80
Shukla,Arun	AWPI	Mech., Ind., Sys. Engineering	EGR	RESPONSE OF AIR FORCE MATERIALS TO EXTREME RESEARCH	\$112,160.00	100.00	\$112,160.00
Shukla,Arun	AWPI	Mech., Ind., Sys. Engineering	EGR	Experimental and numerical investigation on fundamental	\$3,964.00	100.00	\$3,964.00
Shukla,Arun	AWPI	Mech., Ind., Sys. Engineering	EGR	STAC: Development of an Ultra-High Speed Infrared...	\$25,000.00	100.00	\$25,000.00
Sodhi,Manbir Singh	AWPI	Mech., Ind., Sys. Engineering	EGR	Building Bridges - Engineering Interactions for High...	\$141,166.00	50.00	\$70,583.00
Baxter,Christopher	WCPI	Ocean Engineering	EGR	CI - Rhode Island Shoreline Area Management Plan...	\$100,000.00	33.00	\$33,000.00
Baxter,Christopher	WCPI	Ocean Engineering	EGR	CI - Rhode Island Shoreline Area Management Plan...	\$200,000.00	33.00	\$66,000.00
Grilli,Annette R	AWPI	Ocean Engineering	EGR	Storm Flood Inundation Mapping for the RI, including ...	\$298,945.00	100.00	\$298,945.00
Licht,Stephen C	AWPI	Ocean Engineering	EGR	MRI: Development of a Remote Operated Vehicle for...	\$5,065.00	100.00	\$5,065.00
Miller,James H	AWPI	Ocean Engineering	EGR	Sediment Characterization for Acoustic Modeling	\$12,900.00	50.00	\$6,450.00
Miller,James H	AWPI	Ocean Engineering	EGR	The effects of sediment properties on low frequency acou	\$37,343.00	50.00	\$18,671.50
Potty,Gopu R	WCPI	Ocean Engineering	EGR	Sediment Characterization for Acoustic Modeling	\$12,900.00	50.00	\$6,450.00
Potty,Gopu R	WCPI	Ocean Engineering	EGR	The effects of sediment properties on low frequency acou	\$37,343.00	50.00	\$18,671.50

**COLLEGE TOTAL**

**\$3,211,783.67**

**COLLEGE OF THE ENVIRONMENT AND LIFE SCIENCES**

Rothman,Alan	AWPI	Biochem-Microb-Molecular Ge	ELS	Quantifying Heterogeneities in Dengue Virus ...	\$54,523.00	100.00	\$54,523.00
Seibel,Brad A	WCPI	Biological Sciences	ELS	BIOLOGICAL RESPONSE TO THE DYNAMIC SPECTRAL	\$85,000.00	35.00	\$29,750.00
Alm,Steven	AWPI	CELS Academic Unit 1	ELS	Risk Management and Crop Insurance Education...	\$206,000.00	100.00	\$206,000.00
Pivarnik,Lori F	AWPI	CELS Academic Unit 1	ELS	Addressing Production, Liability and Food Safety Risks...	\$15,296.00	100.00	\$15,296.00
Sebelia,Linda M	AWPI	CELS Academic Unit 1	ELS	EFNEP FY 15	\$181,182.00	100.00	\$181,182.00
August,Peter V	AWPI	CELS Academic Unit 2	ELS	CI - Sustaining and Enhancing Access to the ...	\$50,000.00	34.00	\$17,000.00
August,Peter V	WCPI	CELS Academic Unit 2	ELS	North Atlantic Right Whale Sightings Database (NARSWD)..	\$99,998.00	20.00	\$19,999.60
Bonynge,Gregory H	WCPI	CELS Academic Unit 2	ELS	CI - Sustaining and Enhancing Access to the ...	\$50,000.00	33.00	\$16,500.00
Engelhart,Simon E	AWPI	CELS Academic Unit 2	ELS	Heterogeneous Rupture of Great Cascadia	\$122,836.00	100.00	\$122,836.00
Engelhart,Simon E	AWPI	CELS Academic Unit 2	ELS	Refined Estimates of Coseismic Subsidence Along the...	\$26,211.00	100.00	\$26,211.00
Gold,Arthur J	AWPI	CELS Academic Unit 2	ELS	CI - INTERNATIONAL WORKSHOP ON URBANIZATION IN...	\$59,846.00	100.00	\$59,846.00
Labash,Charles	WCPI	CELS Academic Unit 2	ELS	CI - Sustaining and Enhancing Access to the ...	\$50,000.00	33.00	\$16,500.00
Labash,Charles	WCPI	CELS Academic Unit 2	ELS	North Atlantic Right Whale Sightings Database (NARSWD)..	\$99,998.00	20.00	\$19,999.60
Mcwilliams,Scott R	AWPI	CELS Academic Unit 2	ELS	CI -COLLAB RES: FAT METABOLISM AND OXIDATIVE STRESS...	\$163,183.00	100.00	\$163,183.00
Mcwilliams,Scott R	AWPI	CELS Academic Unit 2	ELS	CI -COLLAB RES: FAT METABOLISM AND OXIDATIVE STRESS...	\$146,936.00	100.00	\$146,936.00
Mcwilliams,Scott R	AWPI	CELS Academic Unit 2	ELS	CI -COLLAB RES: FAT METABOLISM AND OXIDATIVE STRESS...	\$156,624.00	100.00	\$156,624.00
Mcwilliams,Scott R	AWPI	CELS Academic Unit 2	ELS	Effects of Habitat Restoration on American Woodcock...	\$538,760.00	100.00	\$538,760.00
Paton,Peter	AWPI	CELS Academic Unit 2	ELS	CI - Rhode Island Breeding Bird Atlas	\$799,341.00	100.00	\$799,341.00
Medin,Carey L	AWPI	CELS Academic Unit 3	ELS	Antiviral and Immunomodulatory Effects of Inter-Alpha...	\$70,092.00	100.00	\$70,092.00

Moseman-Valtierra,Serena	AWPI	CELS Academic Unit 3	ELS	Quantifying Annual GHG Emissions from the Field's Point.	\$9,391.00	100.00	\$9,391.00
Rothman,Alan	AWPI	CELS Academic Unit 3	ELS	Development of an Immunology Research Agenda to...	\$9,999.00	100.00	\$9,999.00
Martin,Pamela P	AWPI	Cooperative Extension	ELS	RI 2014 OPERATION: MILITARY KIDS GRANT	\$38,775.00	100.00	\$38,775.00
Boothroyd,Jon C	WCPI	Dean Environment Life Scienc	ELS	Identification of Sand / Gravel Resources in RI Waters	\$200,000.00	33.00	\$66,000.00
Kirby,John D	AWPI	Dean Environment Life Scienc	ELS	McIntire Stennis FY 15 Land Grant Award	\$147,949.00	100.00	\$147,949.00
Kirby,John D	AWPI	Dean Environment Life Scienc	ELS	FY 14 Hatch Formula	\$1,030,791.00	50.00	\$515,395.50
Rhodes III,Richard C	AWPI	Dean Environment Life Scienc	ELS	2014-15 USDA Research Support Agreement	\$1,045.00	100.00	\$1,045.00
Rhodes III,Richard C	AWPI	Dean Environment Life Scienc	ELS	RI PEP-Rhode Island public energy partnership	\$34,247.00	10.00	\$3,424.70
Rhodes III,Richard C	AWPI	Dean Environment Life Scienc	ELS	2014-15 USDA Research Support Agreement	\$5,500.00	100.00	\$5,500.00
Rhodes III,Richard C	AWPI	Dean Environment Life Scienc	ELS	Animal Health FY 15	\$41,274.00	100.00	\$41,274.00
Sheely,Deborah L	AWPI	Dean Environment Life Scienc	ELS	Northeast Climate Hub	\$13,000.00	80.00	\$10,400.00
Sholly,Rachel E	WCPI	Dean Environment Life Scienc	ELS	RI PEP-Rhode Island public energy partnership	\$34,247.00	85.00	\$29,109.95
Bengtson,David A	WCPI	Fish-Animal-Vet-Science	ELS	Bioconversion of squid and scallop processing byproducts	\$279,554.00	25.00	\$69,888.50
Gomez-Chiarri,Marta	AWPI	Fish-Animal-Vet-Science	ELS	FY 14 Animal Health	\$5,000.00	100.00	\$5,000.00
Gomez-Chiarri,Marta	AWPI	Fish-Animal-Vet-Science	ELS	improving shellfish survival through genetic improv	\$81,792.00	100.00	\$81,792.00
Rhodes III,Richard C	WCPI	Fish-Animal-Vet-Science	ELS	W. Africa Analytical Support Services& Evaluations	\$371,542.89	10.00	\$37,154.28
Zawia,Nasser H	AWPI	Fish-Animal-Vet-Science	ELS	GRAD RESEARCH FELLOWSHIP PROGRAM- JUSTIN RICHARD	\$44,000.00	100.00	\$44,000.00
Lee,Chong	AWPI	Food Science And Nutrition	ELS	Bioconversion of squid and scallop processing byproducts	\$279,554.00	75.00	\$209,665.50
Rhodes III,Richard C	WCPI	Food Science And Nutrition	ELS	FY 14 Hatch Formula	\$1,030,791.00	50.00	\$515,395.50
Sebelia,Linda M	AWPI	Food Science And Nutrition	ELS	CELS: INTEGRATING NUTRITION EDUCATION INTO PROVIDENCE...	\$145,000.00	100.00	\$145,000.00
Tovar,Alison	AWPI	Food Science And Nutrition	ELS	System Science to Guide Whole-of-Community...	\$15,583.00	100.00	\$15,583.00
Boothroyd,Jon C	WCPI	Geosciences	ELS	CI - Rhode Island Shoreline Area Management Plan...	\$100,000.00	33.00	\$33,000.00
Boothroyd,Jon C	WCPI	Geosciences	ELS	CI - Rhode Island Shoreline Area Management Plan...	\$200,000.00	33.00	\$66,000.00
Murray, David	AWPI	Geosciences	ELS	UTES: RI Technology Enhanced Science Program	\$470,250.00	100.00	\$470,250.00
August,Peter V	AWPI	Natural Res. Science	ELS	CI - ELEVATION MAPPING OF CRITICAL PARK AREAS FOR...	\$768,864.00	100.00	\$768,864.00
August,Peter V	AWPI	Natural Res. Science	ELS	CI - ACQUISITION COORDINATION, COMPILATION, DATE MGMT.	\$565,722.00	100.00	\$565,722.00
August,Peter V	AWPI	Natural Res. Science	ELS	CI - FY2014 GIS Support to NUWC - 3rd Task Order	\$25,000.00	34.00	\$8,500.00
August,Peter V	AWPI	Natural Res. Science	ELS	RES BASED GEOSPTEL DTA COLL ANYL AND DEL IN SUPP OF ENTRP	\$95,170.00	100.00	\$95,170.00
Damon,Christopher P	WCPI	Natural Res. Science	ELS	CI - FY2014 GIS Support to NUWC - 3rd Task Order	\$25,000.00	33.00	\$8,250.00
Gold,Arthur J	WCPI	Natural Res. Science	ELS	Northeast Climate Hub	\$13,000.00	20.00	\$2,600.00
Husband,Thomas P	AWPI	Natural Res. Science	ELS	Conservation Genetics and Genomics to Inform Adaptive...	\$57,098.00	100.00	\$57,098.00
Husband,Thomas P	AWPI	Natural Res. Science	ELS	Applied Ecology and Conservation Genetics in Support of	\$500,555.00	100.00	\$500,555.00
Husband,Thomas P	AWPI	Natural Res. Science	ELS	Conservation Genetics and Applied Ecology to Support Wil	\$1,241,269.00	100.00	\$1,241,269.00
Karraker,Nancy	PI	Natural Res. Science	ELS	INVENTORY AND MONITORING OF AMPHIBIANS AND REPTILES AT..	\$255,577.00	100.00	\$255,577.00
Labash,Charles	WCPI	Natural Res. Science	ELS	CI - FY2014 GIS Support to NUWC - 3rd Task Order	\$25,000.00	33.00	\$8,250.00
McGreevy Jr,Thomas J	WCPI	Natural Res. Science	ELS	Conservation Genetics and Genomics to Inform Adaptive...	\$57,098.00	0.00	\$0.00
McGreevy Jr,Thomas J	WCPI	Natural Res. Science	ELS	Applied Ecology and Conservation Genetics in Support of	\$500,555.00	0.00	\$0.00
McGreevy Jr,Thomas J	WCPI	Natural Res. Science	ELS	Conservation Genetics and Applied Ecology to Support Wil	\$1,241,269.00	0.00	\$0.00
Meyerson,Laura A	AWPI	Natural Res. Science	ELS	US Denmark Czech Republic China Planning	\$9,319.00	100.00	\$9,319.00
Paton,Peter	AWPI	Natural Res. Science	ELS	CI - COASTAL BIRD MANAGEMENT PROTOCOLS	\$15,000.00	100.00	\$15,000.00
Faubert,Heather H	AWPI	Plant Science	ELS	Northeast plant diagnostic network	\$19,560.00	100.00	\$19,560.00
Sullivan,W Michael	AWPI	Plant Science	ELS	Soil Loss and Farm Preservation Policies in RI	\$45,000.00	100.00	\$45,000.00

**COLLEGE TOTAL**

**\$8,832,305.13**

**GRADUATE SCHOOL OF OCEANOGRAPHY**

Maranda,Lucie	AWPI	GSO Academic Affairs	GSO	Support Services for Sampling Biofouling on Iodine...	\$1,566.00	100.00	\$1,566.00
Swift,Judith M	AWPI	GSO Coastal Institute	GSO	CI - The History of Shellfish in Rhode Island	\$2,000.00	100.00	\$2,000.00
Carnevale,Michelle	AWPI	GSO Coastal Resources Cent	GSO	CI - Rhode Island Shoreline Area Management Plan...	\$100,000.00	34.00	\$34,000.00
Carnevale,Michelle	AWPI	GSO Coastal Resources Cent	GSO	CI - Rhode Island Shoreline Area Management Plan...	\$200,000.00	34.00	\$68,000.00
Kent,Karen L	AWPI	GSO Coastal Resources Cent	GSO	W. Africa Analytical Support Services& Evaluations	\$371,542.89	90.00	\$334,388.60
Ricci,Glenn M	AWPI	GSO Coastal Resources Cent	GSO	CI - Study Tour on Innovative Adapt. Strategies for ...	\$209,564.00	100.00	\$209,564.00
Robadue Jr,Donald D	AWPI	GSO Coastal Resources Cent	GSO	CI - Guidance for the National Park Service in...	\$30,495.00	100.00	\$30,495.00

Torell,Elin C	AWPI	GSO Coastal Resources Centr	GSO	CI - Fisheries Integration of Society and Habitats...	\$49,999.00	100.00	\$49,999.00
Torell,Elin C	AWPI	GSO Coastal Resources Centr	GSO	CI Fisheries Integration of Society and Habitats	\$49,999.00	100.00	\$49,999.00
Lohmann,Rainer	AWPI	GSO Facilities	GSO	Development of a Passive Multisampling Method...	\$150,000.00	100.00	\$150,000.00
Alberts,Jonathan C	AWPI	GSO Faculty	GSO	University-National Oceanographic Laboratory System	\$718,631.00	50.00	\$359,315.50
Alberts,Jonathan C	AWPI	GSO Faculty	GSO	USGS Participation in UNOLS	\$26,524.00	50.00	\$13,262.00
Alberts,Jonathan C	AWPI	GSO Faculty	GSO	University-National Oceanographic Laboratory System	\$132,612.00	50.00	\$66,306.00
Alberts,Jonathan C	AWPI	GSO Faculty	GSO	University-National Oceanographic Laboratory	\$241,220.00	50.00	\$120,610.00
Campbell,Robert G	AWPI	GSO Faculty	GSO	CI-CHUKCHI SEA	\$19,555.00	100.00	\$19,555.00
Campbell,Robert G	PI	GSO Faculty	GSO	COPEPOD LIFE HISTORY	\$25,997.00	100.00	\$25,997.00
Coleman,Dwight F	AWPI	GSO Faculty	GSO	CI - NUWC Collaboration with the URI Inner Space Center.	\$20,000.00	100.00	\$20,000.00
Collie,Jeremy S	AWPI	GSO Faculty	GSO	University of Rhode Island Weekly Fish Trawl	\$234,000.00	100.00	\$234,000.00
Corliss,Bruce H	AWPI	GSO Faculty	GSO	Calibration of new approach to reconstruct ancient botto	\$30,404.00	100.00	\$30,404.00
Cornillon,Peter C	PI	GSO Faculty	GSO	TEMPORAL TRENDS IN OCEAN SURFACE	\$34,527.00	66.00	\$22,787.82
Desilva,Annette M	WCPI	GSO Faculty	GSO	University-National Oceanographic Laboratory System	\$718,631.00	50.00	\$359,315.50
Desilva,Annette M	WCPI	GSO Faculty	GSO	USGS Participation in UNOLS	\$26,524.00	50.00	\$13,262.00
Desilva,Annette M	WCPI	GSO Faculty	GSO	University-National Oceanographic Laboratory System	\$132,612.00	50.00	\$66,306.00
Desilva,Annette M	WCPI	GSO Faculty	GSO	University-National Oceanographic Laboratory	\$241,220.00	50.00	\$120,610.00
D'Hondt,Steven L	AWPI	GSO Faculty	GSO	Global Estimate of Radiolytic Hydrogen Production in	\$30,000.00	100.00	\$30,000.00
D'Hondt,Steven L	AWPI	GSO Faculty	GSO	The Microbial Biogeography of the Sulfate-Methane...	\$19,805.00	100.00	\$19,805.00
Ginis,Isaac	AWPI	GSO Faculty	GSO	Geophysical Fluid Dynamics Lab (GFDL) Navy...	\$70,001.00	100.00	\$70,001.00
Ginis,Isaac	AWPI	GSO Faculty	GSO	GFDN (Navy) Maintenance and Support: 3 year...	\$43,138.45	100.00	\$43,138.45
Kelley,Katherine A	AWPI	GSO Faculty	GSO	Upper mantle Oxygen Fugacity	\$55,453.00	100.00	\$55,453.00
Kenney,Robert D	AWPI	GSO Faculty	GSO	North Atlantic Right Whale Sightings Database (NARSWD)..	\$99,998.00	60.00	\$59,998.80
King,John W	AWPI	GSO Faculty	GSO	Collab. Research: Sediment Pathways, sedimentation...	\$80,994.00	100.00	\$80,994.00
King,John W	AWPI	GSO Faculty	GSO	Identification of Sand / Gravel Resources in RI Waters	\$200,000.00	67.00	\$134,000.00
King,John W	AWPI	GSO Faculty	GSO	CI - Submerged Habitat Mapping at Northeast Region...	\$220,000.00	20.00	\$44,000.00
King,John W	AWPI	GSO Faculty	GSO	CI - Electromagnetic Field Impacts on Elasmobranch...	\$695,288.00	84.00	\$584,041.92
King,John W	AWPI	GSO Faculty	GSO	CI - Electromagnetic Field Impacts on Elasmobranch...	\$103,369.00	84.00	\$86,829.96
King,John W	AWPI	GSO Faculty	GSO	CI - Submerged Habitat Mapping at Northeast Region...	\$220,000.00	80.00	\$176,000.00
LaFrance,Monique	WCPI	GSO Faculty	GSO	Community Based Seawater Monitoring for Organic...	\$11,500.00	100.00	\$11,500.00
Lohmann,Rainer	AWPI	GSO Faculty	GSO	RATES AND CONTROLS ON METHANE OXIDATION	\$110,000.00	100.00	\$110,000.00
Loose,Brice	PI	GSO Faculty	GSO	Z Inventories of Primary Productivity (ZIPP)	\$256,756.00	100.00	\$256,756.00
Loose,Brice	AWPI	GSO Faculty	GSO	SUPPORT SERVICES FOR SAMPLING	\$2,144.00	100.00	\$2,144.00
Maranda,Lucie	AWPI	GSO Faculty	GSO	IPA POSITION AT NSF CHEMICAL OCEANOGRAPHY	\$66,424.00	100.00	\$66,424.00
Moran,S Bradley	AWPI	GSO Faculty	GSO	"C-DEBI Data Management Portal" (Year 2-Pockalny)	\$121,459.00	100.00	\$121,459.00
Pockalny,Robert A	AWPI	GSO Faculty	GSO	SYNTHESIS OF LINE ISLANDS GEOLOGIC	\$17,500.00	100.00	\$17,500.00
Pockalny,Robert A	AWPI	GSO Faculty	GSO	Evaluation of a Dual Actuator Bottom Following...	\$80,480.00	100.00	\$80,480.00
Roman,Christopher N	AWPI	GSO Faculty	GSO	URI Component: Web-Scale Assisted Robot	\$60,633.00	100.00	\$60,633.00
Roman,Christopher N	AWPI	GSO Faculty	GSO	URI Component: Web-Scale Assisted Robot	\$61,763.00	100.00	\$61,763.00
Rossby,Hans T	AWPI	GSO Faculty	GSO	THE NORRONA PROJECT	\$116,724.00	100.00	\$116,724.00
Rynearson,Tatiana A	AWPI	GSO Faculty	GSO	CI- ECOLOGY AT THE MICROBIAL	\$155,687.00	100.00	\$155,687.00
Shen,Yang	WCPI	GSO Faculty	GSO	EARTHQUAKE TRIGGERING AND SYNC	\$167,926.00	5.00	\$8,396.30
Spivack,Arthur J	AWPI	GSO Faculty	GSO	International Drilling to Recover Aquifer Sands (IDRAS)	\$63,132.00	100.00	\$63,132.00
Sullivan,James M	AWPI	GSO Faculty	GSO	BIOLOGICAL RESPONSE TO THE DYNAMIC SPECTRAL	\$85,000.00	65.00	\$55,250.00
Ullman,David S	AWPI	GSO Faculty	GSO	MARACOOS: Mid Atlantic Regional Assoc Coastal Ocean	\$30,000.00	100.00	\$30,000.00
Watts,D Randolph	AWPI	GSO Faculty	GSO	3 PIES with Microcat-Ready Option for the University...	\$111,801.00	100.00	\$111,801.00
Watts,D Randolph	AWPI	GSO Faculty	GSO	3 PIES with Microcat-ready Option for NOAA/AOML, Miami	\$111,801.00	100.00	\$111,801.00
Wei,Meng	AWPI	GSO Faculty	GSO	EARTHQUAKE TRIGGERING AND SYNC	\$167,926.00	95.00	\$159,529.70
Hanson Jr,Alfred K	PI	GSO Maintenance	GSO	HARDENING THE URI TO NERACOOS OBSERVATION DATASTREAM	\$12,300.00	100.00	\$12,300.00
Glennon,Thomas J	WCPI	GSO Marine Office	GSO	SHIPTIME & MARINE 2012	\$263,499.00	50.00	\$131,749.50
Glennon,Thomas J	AWPI	GSO Marine Office	GSO	MOSA for OCE 1217446 2012-2017	\$11,845.14	100.00	\$11,845.15
Glennon,Thomas J	AWPI	GSO Marine Office	GSO	MOSA for OCE 1217446 2012-2017	\$39,483.80	100.00	\$39,483.80
Glennon,Thomas J	AWPI	GSO Marine Office	GSO	MOSA for OCE 1217446 2012-2017	\$11,845.14	100.00	\$11,845.14
Glennon,Thomas J	AWPI	GSO Marine Office	GSO	MOSA for OCE 1217446 2012-2017	\$1,845.14	100.00	\$1,845.14
Fanning III,William L	AWPI	GSO Marine Technicians	GSO	SHIPTIME & MARINE 2012	\$263,499.00	50.00	\$131,749.50

Hickox,Sara C	AWPI	GSO Office of Marine Program	GSO	DEEP CARBON OBSERVATORY	\$749,969.00	100.00	\$749,969.00
Nixon,Dennis W	AWPI	GSO Rhode Island Sea Grant	GSO	RHODE ISLAND SEA GRANT 2014-2018	\$176,375.00	100.00	\$176,375.00

**COLLEGE TOTAL**

**\$6,654,146.78**

**COLLEGE OF HUMAN SCIENCE AND SERVICES**

Cicomascolo,Lori E	AWPI	Dean Human Science And Ser	HSS	Rhode Island Developmental Disabilities Council 2014	\$319,709.00	100.00	\$319,709.00
Clark,Phillip G	AWPI	Gerontology	HSS	GERTRC EDUC CNTRS	\$79,433.00	30.00	\$23,829.90
Clark,Phillip G	WCPI	Gerontology	HSS	Health Care innovation challenge	\$2,395,192.00	10.00	\$239,519.20
Warford,Susan	AWPI	Kingston Child Development C	HSS	RHODE ISLAND RACE TO THE TOP EARLY LEARNING...	\$930.22	100.00	\$930.22
Brand,Susan T	WCPI	School of Education	HSS	Jumpstart 2015	\$182,906.00	50.00	\$91,453.00
Byrd,David M	AWPI	School of Education	HSS	Jumpstart 2015	\$182,906.00	50.00	\$91,453.00
Young,Betty	AWPI	School of Education	HSS	GEMS NET Professional Development Project	\$377,295.00	100.00	\$377,295.00

**COLLEGE TOTAL**

**\$1,144,189.32**

**COLLEGE OF NURSING**

Burbank,Patricia M	WCPI	Nursing Instruction	NUR	GERTRC EDUC CNTRS	\$79,433.00	10.00	\$7,943.30
Curtin,Alicia J	WCPI	Nursing Instruction	NUR	GERTRC EDUC CNTRS	\$79,433.00	10.00	\$7,943.30
Dunphy,Lynne M	AWPI	Nursing Instruction	NUR	Developing RI Ph.D. Nurse Leaders to Transform Health...	\$50,000.00	100.00	\$50,000.00
Martin,Diane C	WCPI	Nursing Instruction	NUR	GERTRC EDUC CNTRS	\$79,433.00	10.00	\$7,943.30

**COLLEGE TOTAL**

**\$73,829.90**

**COLLEGE OF PHARMACY**

Laplante,Kerry L	WCPI	Biomedical & Pharm. Sciences	PHA	Investigation of Cranberry Constituents as Antiinfective	\$90,189.00	25.00	\$22,547.25
Lu,Wei	AWPI	Biomedical & Pharm. Sciences	PHA	Biodegradable hollow CUS nanoparticles for photothermal	\$329,178.00	100.00	\$329,178.00
Lu,Wei	AWPI	Biomedical & Pharm. Sciences	PHA	Novel siRNA Delivery Technology via Biomimetic Nanomater	\$30,000.00	100.00	\$30,000.00
Rowley,David C	AWPI	Biomedical & Pharm. Sciences	PHA	Investigation of Cranberry Constituents as Antiinfective	\$90,189.00	50.00	\$45,094.50
Seeram,Navindra P	WCPI	Biomedical & Pharm. Sciences	PHA	Investigation of Cranberry Constituents as Antiinfective	\$90,189.00	25.00	\$22,547.25
Yan,Bingfang	AWPI	Biomedical & Pharm. Sciences	PHA	Signaling of the Pregnane X Receptor During...	\$276,300.00	100.00	\$276,300.00
Goldstein,Elaina K	AWPI	Living Rite/Health Policy	PHA	Health Care innovation challenge	\$2,395,192.00	60.00	\$1,437,115.20
Estus,Erica L	WCPI	Pharmacy Practice	PHA	GERTRC EDUC CNTRS	\$79,433.00	10.00	\$7,943.30
Hume,Anne L	WCPI	Pharmacy Practice	PHA	GERTRC EDUC CNTRS	\$79,433.00	10.00	\$7,943.30
Kogut,Stephen J	WCPI	Pharmacy Practice	PHA	Health Care innovation challenge	\$2,395,192.00	10.00	\$239,519.20
Larrat,E Paul	WCPI	Pharmacy Practice	PHA	Health Care innovation challenge	\$2,395,192.00	10.00	\$239,519.20
Owens,Norma J	WCPI	Pharmacy Practice	PHA	GERTRC EDUC CNTRS	\$79,433.00	10.00	\$7,943.30
Temkin,Cynthia W	WCPI	Pharmacy Practice	PHA	GERTRC EDUC CNTRS	\$79,433.00	10.00	\$7,943.30

**COLLEGE TOTAL**

**\$2,673,593.80**

**PROVOST**

**COLLEGE TOTAL**

**\$0.00**

**UNIVERSITY COLLEGE**

**COLLEGE TOTAL**

**\$0.00**

**VICE PRESIDENT FOR ADMINISTRATION**

Rosen, Deborah E	AWPI	Transportation Center	VPB	Creating Transportation Career Pathway	\$120,000.00	100.00	\$120,000.00
------------------	------	-----------------------	-----	--	--------------	--------	--------------

**COLLEGE TOTAL** **\$120,000.00**

**VICE PRESIDENT FOR RESEARCH & ECONOMIC DEVELOPMENT**

Alfonso, Peter	AWPI	Research	VPR	Infrastructure to advance life sciences in the ocean sta	\$4,000,000.00	100.00	\$4,000,000.00
Petell, James K	AWPI	Small Business Development	VPR	RI Small Business Develop Centers	\$458,850.00	100.00	\$458,850.00

**COLLEGE TOTAL** **\$4,458,850.00**

**VICE PRESIDENT, STUDENT AFFAIRS**

Feeley, Lacey M	AWPI	Vice President Student Affairs	VPS	The SMILE program watershed monitoring and stewardship project	\$21,506.00	100.00	\$21,506.00
Feeley, Lacey M	PI	Vice President-Student Affairs	VPS	The SMILE program watershed monitoring and stewardship p	\$62,159.00	100.00	\$62,159.00

**COLLEGE TOTAL** **\$83,665.00**

**TOTAL OVERALL AWARDS** **\$32,933,900.78**