

University of Rhode Island

DigitalCommons@URI

---

Reports (Research and Economic Development)

Division of Research and Economic  
Development

---

2014

## Division of Research and Economic Development Monthly Report for May 2014

URI Division of Research and Economic Development

Follow this and additional works at: [https://digitalcommons.uri.edu/researchecondev\\_reports](https://digitalcommons.uri.edu/researchecondev_reports)

---

### Recommended Citation

URI Division of Research and Economic Development, "Division of Research and Economic Development Monthly Report for May 2014" (2014). *Reports (Research and Economic Development)*. Paper 64. [https://digitalcommons.uri.edu/researchecondev\\_reports/64](https://digitalcommons.uri.edu/researchecondev_reports/64)

This Periodical is brought to you by the University of Rhode Island. It has been accepted for inclusion in Reports (Research and Economic Development) by an authorized administrator of DigitalCommons@URI. For more information, please contact [digitalcommons-group@uri.edu](mailto:digitalcommons-group@uri.edu). For permission to reuse copyrighted content, contact the author directly.

**Table 1. Awards processed by the Office of Sponsored Projects Review FY10 through May FY14 YTD**

Month	FY10				FY11			
	Number		Amount Awarded		Number		Amount Awarded	
	Count	Cum. Ct.	Amount	Cum. Amt.	Count	Cum. Ct.	Amount	Cum. Amt.
July	28	28	\$8,427,538.60	\$8,427,538.60	39	39	\$10,965,465.50	\$10,965,465.50
August	43	71	\$14,167,899.21	\$22,595,437.81	33	72	\$15,250,958.36	\$26,216,423.86
September	70	141	\$12,469,481.84	\$35,064,919.65	60	132	\$5,472,552.34	\$31,688,976.20
October	46	187	\$7,664,128.20	\$42,729,047.85	49	181	\$5,666,653.80	\$37,355,630.00
November	26	213	\$2,647,733.00	\$45,376,780.85	18	199	\$3,988,117.24	\$41,343,747.24
December	30	243	\$4,769,306.73	\$50,146,087.58	25	224	\$5,631,904.26	\$46,975,651.50
January	29	272	\$4,596,231.77	\$54,742,319.35	33	257	\$4,417,243.69	\$51,392,895.19
February	36	308	\$8,022,999.41	\$62,765,318.76	34	291	\$6,955,551.25	\$58,348,446.44
March	27	335	\$3,315,500.05	\$66,080,818.81	28	319	\$4,405,035.94	\$62,753,482.38
April	47	382	\$16,843,832.59	\$82,924,651.40	45	364	\$7,439,520.72	\$70,193,003.10
May	30	412	\$10,443,425.00	\$93,368,076.40	44	408	\$10,694,786.50	\$80,887,789.60
June	48	460	\$8,138,037.00	\$101,506,113.40	44	452	\$11,767,652.47	\$92,655,442.07
<b>Total</b>	<b>460</b>	<b>460</b>	<b>\$101,506,113.40</b>	<b>\$101,506,113.40</b>	<b>452</b>	<b>452</b>	<b>\$92,655,442.07</b>	<b>\$92,655,442.07</b>

Month	FY12				FY13				FY14			
	Number		Amount Awarded		Number		Amount Awarded		Number		Amount Awarded	
	Count	Cum. Ct.	Amount	Cum. Amt.	Count	Cum. Ct.	Amount	Cum. Amt.	Count	Cum. Ct.	Amount	Cum. Amt.
July	35	35	\$3,995,132.47	\$3,995,132.47	18	18	\$2,130,245.92	\$2,130,245.92	39	39	\$4,139,716.95	\$4,139,716.95
August	53	88	\$16,018,070.93	\$20,013,203.40	51	69	\$13,973,655.37	\$16,103,901.29	50	89	\$10,961,168.50	\$15,100,885.45
September	51	139	\$7,524,251.09	\$27,537,454.49	27	96	\$3,729,908.56	\$19,833,809.85	44	133	\$13,495,443.00	\$28,596,328.45
October	27	166	\$2,640,230.72	\$30,177,685.21	39	135	\$6,553,741.92	\$26,387,551.77	30	163	\$4,306,251.98	\$32,902,580.43
November	18	184	\$2,118,331.08	\$32,296,016.29	24	159	\$3,306,500.92	\$29,694,052.69	16	179	\$3,117,236.86	\$36,019,817.29
December	26	210	\$7,124,885.17	\$39,420,901.46	18	177	\$2,790,458.11	\$32,484,510.80	29	208	\$2,366,159.91	\$38,385,977.20
January	30	240	\$5,494,105.33	\$44,915,006.79	36	213	\$4,699,661.52	\$37,184,172.32	30	238	\$3,780,011.56	\$42,165,988.76
February	39	279	\$4,939,567.93	\$49,854,574.72	43	256	\$6,131,201.28	\$43,315,373.60	31	269	\$2,108,497.68	\$44,274,486.44
March	44	323	\$9,496,521.94	\$59,351,096.66	36	292	\$6,280,723.57	\$49,596,097.17	29	298	\$4,062,350.95	\$48,336,837.39
April	44	367	\$5,791,581.04	\$65,142,677.70	22	314	\$1,799,922.54	\$51,396,019.71	27	325	\$2,285,089.05	\$50,621,926.44
May	36	403	\$8,649,283.33	\$73,791,961.03	30	344	\$5,597,725.78	\$56,993,745.49	36	361	\$3,791,300.32	\$54,413,226.76
June	71	474	\$21,212,788.30	\$95,004,749.33	50	394	\$19,534,036.04	\$76,527,781.53				
<b>Total</b>	<b>474</b>	<b>474</b>	<b>\$95,004,749.33</b>	<b>\$95,004,749.33</b>	<b>394</b>	<b>394</b>	<b>\$76,527,781.53</b>	<b>\$76,527,781.53</b>	<b>361</b>	<b>361</b>	<b>\$54,413,226.76</b>	<b>\$54,413,226.76</b>

Figure 1a. Cumulative totals of numbers of awards received FY10 through May FY14 YTD

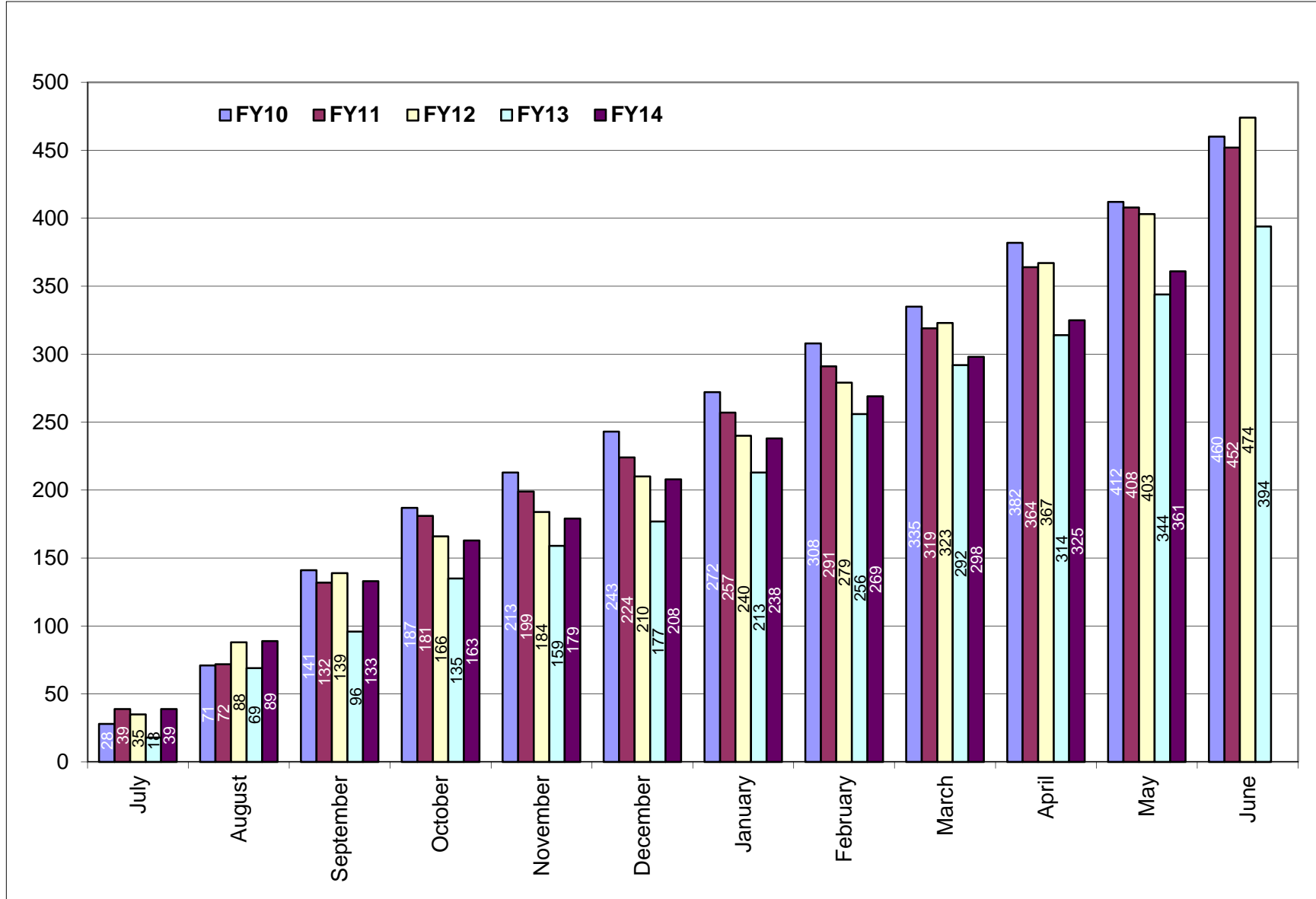
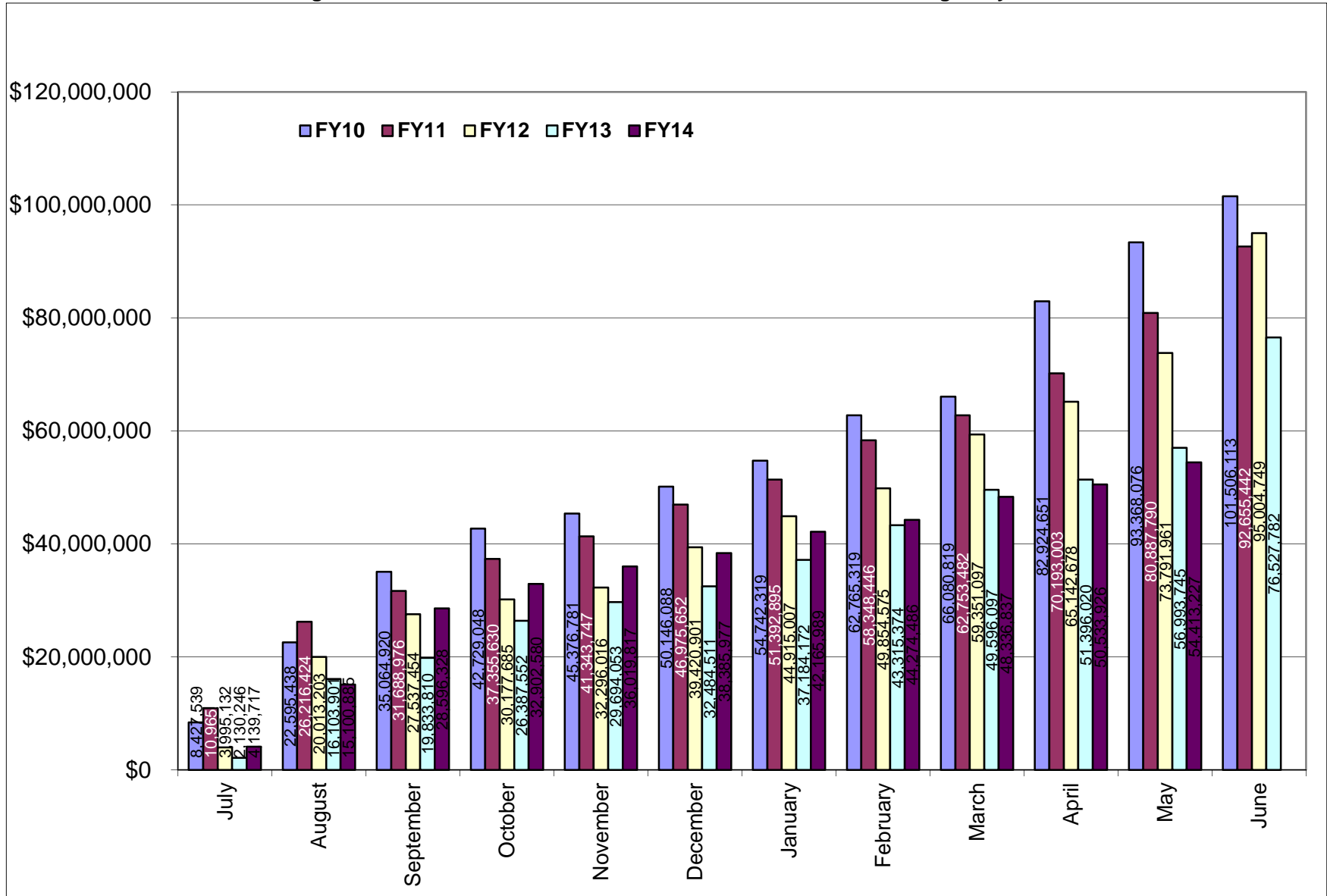


Figure 1b. Cumulative totals of award amounts received FY10 through May FY14 YTD



**Table 2. Summary of awards received by administrative and academic units FY10 through May FY14 YTD**

<b>Administrative</b>	<b><u>FY10</u></b>	<b><u>FY11</u></b>	<b><u>FY12</u></b>	<b><u>FY13</u></b>	<b><u>FY14 YTD</u></b>	<b><u>Totals</u></b>
PRESIDENT'S OFFICE	\$0.00	\$2,900.00	\$0.00	\$0.00	\$0.00	\$2,900.00
PROVOST	\$1,306,675.00	\$84,642.45	\$458,078.10	\$11,025.46	\$66,522.90	\$1,926,943.91
VP, ADMINISTRATION	\$13,879,383.50	\$2,093,977.64	\$1,847,788.00	\$486,099.64	\$934,258.37	\$19,241,507.15
VP, RESEARCH & ECON DEV	\$2,512,500.00	\$8,072,900.00	\$0.00	\$6,000,000.00	\$4,177,835.54	\$20,763,235.54
VP, STUDENT AFFAIRS	\$151,422.90	\$26,994.82	\$239,999.40	\$0.00	\$261,091.70	\$679,508.82
<b>Academic</b>						
ARTS & SCIENCES	\$9,737,385.85	\$14,719,616.34	\$13,506,337.60	\$10,217,827.48	\$4,435,930.38	\$52,617,097.65
BUSINESS ADMINISTRATION	\$43,901.60	\$108,472.45	\$26,200.00	\$30,264.83	\$72,332.00	\$281,170.88
CONTINUING EDUCATION	\$0.00	\$0.00	\$239,999.40	\$0.00	\$199,568.70	\$439,568.10
ENGINEERING	\$8,643,672.05	\$7,308,043.58	\$6,004,532.53	\$5,160,510.74	\$3,264,355.08	\$30,381,113.98
ENVIRONMENT & LIFE SCIENCES	\$16,232,137.30	\$21,932,032.49	\$26,590,123.59	\$18,531,363.71	\$14,106,526.50	\$97,392,183.59
GRADUATE SCHOOL	\$51,366.00	\$133,960.00	\$0.00	\$922.00	\$0.00	\$186,248.00
HUMAN SCIENCE & SERVICES	\$2,970,596.81	\$2,754,906.50	\$3,316,524.30	\$860,634.00	\$3,207,930.37	\$13,110,591.98
NURSING	\$2,206,995.80	\$682,049.15	\$1,996,376.45	\$1,038,977.00	\$1,308,514.00	\$7,232,912.40
OCEANOGRAPHY	\$32,473,931.12	\$25,768,864.02	\$29,987,097.20	\$28,261,624.70	\$19,258,375.52	\$135,749,892.56
PHARMACY	\$11,195,695.47	\$8,875,242.63	\$10,456,774.36	\$5,928,531.97	\$2,920,417.00	\$39,376,661.43
UNIVERSITY COLLEGE	\$96,550.00	\$90,840.00	\$334,918.40	\$0.00	\$199,568.70	\$721,877.10
UNIVERSITY LIBRARY	\$3,900.00	NA	NA	NA	N/A	\$3,900.00
<b>Totals</b>	<b>\$101,506,113.40</b>	<b>\$92,655,442.07</b>	<b>\$95,004,749.33</b>	<b>\$76,527,781.53</b>	<b>\$54,413,226.76</b>	<b>\$420,107,313.09</b>

NA - Not Applicable (unit did not exist or was in another division)

**Table 2a. Awards received by departments within colleges FY10 through May FY14 YTD**

<u>College</u>	<u>FY10</u>	<u>FY11</u>	<u>FY12</u>	<u>FY13</u>	<u>FY14 YTD</u>	<u>Totals</u>
<b>Arts and Sciences</b>	<b>\$9,737,385.85</b>	<b>\$14,719,616.34</b>	<b>\$13,506,337.60</b>	<b>\$10,217,827.48</b>	<b>\$4,435,930.38</b>	<b>\$52,617,097.65</b>
ARCHEOLOGY AND APPLIED HISTORY	NA	NA	NA	\$34,869.00	\$0.00	\$34,869.00
ART	\$0.00	\$0.00	\$0.00	\$0.00	\$0.00	\$0.00
CANCER PREV RESEARCH CTR (PSY)	\$4,471,253.89	\$3,136,818.20	\$4,716,924.55	\$3,209,160.65	\$429,990.50	\$15,964,147.79
CHEMISTRY	\$1,430,340.26	\$7,856,684.49	\$2,496,787.75	\$3,734,821.70	\$1,511,179.55	\$17,029,813.75
COMMUNICATION STUDIES	\$0.00	\$29,918.00	\$0.00	\$0.00	\$0.00	\$29,918.00
COMPUTER SCIENCE/STATISTICS	\$977,411.00	\$778,198.00	\$451,367.00	\$1,219,627.26	\$159,245.55	\$3,585,848.81
DEAN'S OFFICE	\$0.00	\$48,742.65	\$400,721.25	\$0.00	\$22,302.98	\$471,766.88
ECONOMICS	\$0.00	\$0.00	\$0.00	\$0.00	\$0.00	\$0.00
FEINSTEIN HUNGER CTR(DEAN'S OFFICE)	\$758,760.00	\$820,549.00	\$874,383.00	\$850,654.00	\$797,488.00	\$4,101,834.00
HISTORY	\$39,999.00	\$45,983.00	\$127,850.00	\$145,150.00	\$200,500.00	\$559,482.00
INTERNATIONAL ENGINEERING PROG	\$31,031.25	\$0.00	\$22,642.95	\$0.00	\$0.00	\$53,674.20
LANGUAGES	\$360,220.25	\$440,592.00	\$1,690,588.10	\$249,610.00	\$419,870.00	\$3,160,880.35
LIBRARY AND INFORMATION STUDIES	\$22,064.40	\$0.00	\$0.00	\$0.00	\$50,000.00	\$72,064.40
MATHEMATICS	\$0.00	\$0.00	\$52,945.00	\$245,849.87	\$108,832.55	\$407,627.42
PHYSICS	\$1,331,280.00	\$778,004.00	\$1,294,192.00	\$403,189.00	\$504,034.50	\$4,310,699.50
PSYCHOLOGY (EXCLUDES CPRC)	\$266,331.20	\$695,741.50	\$1,332,244.00	\$71,983.00	\$157,644.00	\$2,523,943.70
SOCIOLOGY/ANTHROPOLOGY	\$48,694.60	\$86,385.50	\$45,692.00	\$8,491.00	\$30,118.75	\$219,381.85
THEATRE	\$0.00	\$0.00	\$0.00	\$0.00	\$0.00	\$0.00
WOMEN'S STUDIES	\$0.00	\$2,000.00	\$0.00	\$0.00	\$0.00	\$2,000.00
WRITING AND RHETORIC	NA	NA	NA	\$44,422.00	\$44,724.00	\$89,146.00
<b>Business Administration</b>	<b>\$43,901.60</b>	<b>\$108,472.45</b>	<b>\$26,200.00</b>	<b>\$30,264.83</b>	<b>\$72,332.00</b>	<b>\$281,170.88</b>
ACCOUNTING	\$0.00	\$0.00	\$0.00	\$0.00	\$0.00	\$0.00
DEAN'S OFFICE	\$0.00	\$0.00	\$0.00	\$0.00	\$0.00	\$0.00
FACULTY - INSTRUCTION	\$33,690.00	\$98,260.85	\$26,200.00	\$30,264.83	\$72,332.00	\$260,747.68
MANAGEMENT	\$10,211.60	\$10,211.60	\$0.00	\$0.00	\$0.00	\$20,423.20

NA - Not Applicable (department did not exist or was in another college)

<u>College</u>	<u>FY10</u>	<u>FY11</u>	<u>FY12</u>	<u>FY13</u>	<u>FY14 YTD</u>	<u>Totals</u>
<b>Contiuing Education</b>	<b>\$0.00</b>	<b>\$0.00</b>	<b>\$239,999.40</b>	<b>\$0.00</b>	<b>\$199,568.70</b>	<b>\$439,568.10</b>
<b>Engineering</b>	<b>\$8,643,672.05</b>	<b>\$7,308,043.58</b>	<b>\$6,004,532.53</b>	<b>\$5,160,510.74</b>	<b>\$3,264,355.08</b>	<b>\$30,381,113.98</b>
CHEMICAL ENGINEERING	\$1,326,159.02	\$2,551,670.47	\$1,361,773.51	\$630,281.44	\$1,007,782.78	\$6,877,667.22
CIVIL/ENVIRONMENTAL ENGINEERING	\$375,636.00	\$141,223.20	\$300,522.00	\$710,021.53	\$664,709.60	\$2,192,112.33
DEAN'S OFFICE	\$0.00	\$0.00	\$65,999.00	\$0.00	\$94,193.00	\$160,192.00
ELECTRICAL ENGINEERING	\$2,891,127.00	\$1,968,203.00	\$1,721,659.56	\$1,751,239.87	\$221,001.00	\$8,553,230.43
ENGINEERING COMPUTER CTR					\$42,572.00	\$42,572.00
MECHANICAL & INDUSTRIAL SYS EGR	\$1,471,881.75	\$2,007,596.89	\$1,678,626.21	\$1,442,279.23	\$350,143.00	\$6,950,527.08
OCEAN ENGINEERING	\$2,578,868.28	\$639,350.02	\$875,952.25	\$626,688.67	\$883,953.70	\$5,604,812.92
<b>Environment and Life Sciences</b>	<b>\$16,232,137.30</b>	<b>\$21,932,032.49</b>	<b>\$26,590,123.59</b>	<b>\$18,531,363.71</b>	<b>\$14,106,526.49</b>	<b>\$97,392,183.58</b>
BIOLOGICAL SCIENCES	\$864,651.05	\$649,397.10	\$820,875.90	\$1,999,526.20	\$703,446.39	\$5,037,896.64
CELL AND MOLECULAR BIOLOGY	\$3,797,940.90	\$6,611,786.35	\$9,061,495.57	\$5,851,712.00	\$3,035,512.86	\$28,358,447.68
COMMUNITY PLANNING/AREA DEVEL	\$0.00	\$92,480.80	\$0.00	\$78,020.84	\$0.00	\$170,501.64
COOPERATIVE EXTENSION	\$518,818.00	\$569,047.10	\$840,103.00	\$1,007,000.18	\$303,615.00	\$3,238,583.28
DEAN'S OFFICE	\$760,250.60	\$3,904,844.00	\$3,412,524.00	\$3,088,215.00	\$1,671,668.43	\$12,837,502.03
ENV & NAT RESOURCE ECONOMICS	\$1,042,235.60	\$208,164.00	\$133,915.79	\$127,166.00	\$780,131.00	\$2,291,612.39
FISHERIES, ANIMAL & VET SCIENCE	\$490,715.20	\$1,686,520.87	\$1,054,268.52	\$1,450,456.60	\$958,878.97	\$5,640,840.16
GEOSCIENCES	\$153,164.30	\$281,612.50	\$6,072,649.00	\$1,314,837.49	\$520,857.87	\$8,343,121.16
MARINE AFFAIRS	\$107,965.75	\$186,751.47	\$92,447.00	\$123,508.00	\$3,837.00	\$514,509.22
NATURAL RESOURCES SCIENCE	\$4,559,105.25	\$4,475,448.00	\$2,510,809.59	\$1,459,896.00	\$2,797,807.22	\$15,803,066.06
NUTRITION AND FOOD SCIENCES	\$2,012,483.00	\$1,040,538.50	\$1,009,287.81	\$1,031,710.00	\$2,847,405.50	\$7,941,424.81
PLANT SCIENCE	\$1,924,807.65	\$2,225,441.80	\$1,581,747.41	\$999,315.40	\$483,366.25	\$7,214,678.51

<u>College</u>	<u>FY10</u>	<u>FY11</u>	<u>FY12</u>	<u>FY13</u>	<u>FY14 YTD</u>	<u>Totals</u>
<b>Graduate School</b>	<b>\$51,366.00</b>	<b>\$133,960.00</b>	<b>\$0.00</b>	<b>\$922.00</b>	<b>\$0.00</b>	<b>\$186,248.00</b>
<b>Human Science and Services</b>	<b>\$2,970,596.81</b>	<b>\$2,754,906.50</b>	<b>\$3,316,524.30</b>	<b>\$860,634.00</b>	<b>\$3,207,930.37</b>	<b>\$13,110,591.98</b>
CENTER FOR HUMAN SERVICES	\$0.00	\$0.00	\$0.00	\$0.00	\$287,302.00	\$287,302.00
COMMUNICATIVE DISORDERS	\$26,800.00	\$50,000.00	\$0.00	\$0.00	\$0.00	\$76,800.00
DEAN'S OFFICE	\$231,454.81	\$682,121.00	\$955,527.00	\$232,908.00	\$588,623.00	\$2,690,633.81
EDUCATION	\$1,072,212.00	\$1,487,628.00	\$939,834.00	\$535,658.00	\$1,552,868.92	\$5,588,200.92
GERONTOLOGY	\$757,040.40	\$207,449.50	\$864,295.30	\$0.00	\$276,646.50	\$2,105,431.70
HUMAN DEV/COUNSEL/FAM STUDIES	\$90,059.00	\$301,708.00	\$216,144.00	\$92,068.00	\$116,886.00	\$816,865.00
KINGSTON CHILD DEVELOPMENT CTR					\$7,162.95	\$7,162.95
KINESIOLOGY	\$267,673.20	\$0.00	\$0.00	\$0.00	\$0.00	\$267,673.20
PHYSICAL THERAPY	\$521,058.00	\$0.00	\$340,724.00	\$0.00	\$341,442.00	\$1,203,224.00
TEXTILES/FASHION MERCHAND/DESIGN	\$4,299.40	\$26,000.00	\$0.00	\$0.00	\$36,999.00	\$67,298.40
<b>Nursing</b>	<b>\$2,206,995.80</b>	<b>\$682,049.15</b>	<b>\$1,996,376.45</b>	<b>\$1,038,977.00</b>	<b>\$1,308,514.00</b>	<b>\$7,232,912.40</b>
<b>Oceanography</b>	<b>\$32,473,931.12</b>	<b>\$25,768,864.02</b>	<b>\$29,987,097.20</b>	<b>\$28,261,624.70</b>	<b>\$19,258,375.51</b>	<b>\$135,749,892.55</b>
<b>Pharmacy</b>	<b>\$11,195,695.47</b>	<b>\$8,875,242.63</b>	<b>\$10,456,774.36</b>	<b>\$5,928,531.97</b>	<b>\$2,920,417.00</b>	<b>\$39,376,661.43</b>
BIOMEDICAL & PHARMACEUTICAL SCI	\$8,595,883.92	\$6,958,789.13	\$5,743,988.01	\$5,029,978.72	\$1,487,834.00	\$27,816,473.78
CRIME LAB	\$812,676.00	\$843,740.00	\$77,228.21	\$27,172.25	\$33,092.00	\$1,793,908.46
DEAN'S OFFICE	\$0.00	\$0.00	\$0.00	\$0.00	\$0.00	\$0.00
ELDERLY MEDICATION	NA	\$20,000.00	\$0.00	\$0.00	\$0.00	\$20,000.00
LIVING RITE/HEALTH POLICY	NA	NA	\$3,161,892.60	\$0.00	\$811,359.00	\$3,973,251.60
PHARMACY PRACTICE	\$1,787,135.55	\$1,052,713.50	\$1,473,665.54	\$871,381.00	\$588,132.00	\$5,773,027.59
<b>University College</b>	<b>\$96,550.00</b>	<b>\$90,840.00</b>	<b>\$334,918.40</b>	<b>\$0.00</b>	<b>\$199,568.70</b>	<b>\$721,877.10</b>



<u>College</u>	<u>FY10</u>	<u>FY11</u>	<u>FY12</u>	<u>FY13</u>	<u>FY14 YTD</u>	<u>Totals</u>
University Library	\$3,900.00	NA	NA	NA	NA	\$3,900.00

---

NA - Not Applicable (unit did not exist or was in another division)

**Table 2b. Awards received by units within administrative divisions FY10 through May FY14 YTD**

<u>Administrative Unit</u>	<u>FY10</u>	<u>FY11</u>	<u>FY12</u>	<u>FY13</u>	<u>FY14 YTD</u>	<u>Totals</u>
<b>President's Office</b>	<b>\$0.00</b>	<b>\$2,900.00</b>	<b>\$0.00</b>	<b>\$0.00</b>	<b>\$0.00</b>	<b>\$2,900.00</b>
<b>Provost</b>	<b>\$1,306,675.00</b>	<b>\$84,642.45</b>	<b>\$458,078.10</b>	<b>\$11,025.46</b>	<b>\$66,522.90</b>	<b>\$1,926,943.91</b>
ADVANCE OFFICE	\$10,000.00	\$0.00	\$0.00	\$0.00	\$0.00	\$10,000.00
LABOR RESEARCH CENTER	\$19,600.00	\$35,899.80	\$0.00	\$11,025.46	\$0.00	\$66,525.26
NETWORK AND TELECOM SERVICES	\$924,858.00	\$0.00	\$0.00	\$0.00	\$0.00	\$924,858.00
PROVOST	\$352,217.00	\$48,742.65	\$458,078.10	\$0.00	\$66,522.90	\$925,560.65
UNIVERSITY LIBRARY	NA	\$0.00	\$0.00	\$0.00	\$0.00	\$0.00
<b>VP, Administration</b>	<b>\$13,879,383.50</b>	<b>\$2,093,977.64</b>	<b>\$1,847,788.00</b>	<b>\$486,099.64</b>	<b>\$934,258.37</b>	<b>\$19,241,507.15</b>
TRANSPORTATION CENTER	\$1,354,101.50	\$1,744,823.54	\$1,522,497.00	\$474,151.64	\$934,258.37	\$6,029,832.05
VICE PRESIDENT FOR ADMINISTRATION	\$12,525,282.00	\$349,154.10	\$325,291.00	\$11,948.00	\$0.00	\$13,211,675.10
<b>VP, Research &amp; Economic Development</b>	<b>\$2,512,500.00</b>	<b>\$8,072,900.00</b>	<b>\$0.00</b>	<b>\$6,000,000.00</b>	<b>\$4,177,835.54</b>	<b>\$4,177,835.54</b>
SMALL BUSINESS DEVELOPMENT CTR					\$172,400.00	\$172,400.00
VICE PRESIDENT FOR RESEARCH					\$4,005,435.54	\$4,005,435.54
<b>VP, Student Affairs</b>	<b>\$151,422.90</b>	<b>\$26,994.82</b>	<b>\$239,999.40</b>	<b>\$0.00</b>	<b>\$261,091.70</b>	<b>\$679,508.82</b>
CAMPUS LIFE	\$0.00	\$0.00	\$0.00	\$0.00	\$0.00	\$0.00
HEALTH SERVICES	\$0.00	\$0.00	\$0.00	\$0.00	\$0.00	\$0.00
STUDENT LIFE	\$151,422.90	\$0.00	\$0.00	\$0.00	\$61,523.00	\$212,945.90
TALENT DEVELOPMENT	\$0.00	\$26,994.82	\$239,999.40	\$0.00	\$199,568.70	\$466,562.92

NA - Not Applicable (unit did not exist or was in another division)

**Report 1**

**Awards By Investigator & By Department & By College  
For Period July 01, 2013 thru May 31st, 2014**

PRINCIPAL INVESTIGATOR	ROLE	DEPARTMENT	COLLEGE	TITLE SHORT	AWARD AMOUNT	CREDIT %	PORTION AMOUNT
<b>COLLEGE OF ARTS AND SCIENCES</b>							
Lebeau,Rebecca M	AWPI	Cancer Prevention Res. Ctr	A&S	CONTRACEPTIVE AWARENESS AND REPRODUCTIVE EDUCATION	\$30,037.00	100.00	\$30,037.00
Lipschitz,Jessica Morrow	AWPI	Cancer Prevention Res. Ctr	A&S	Expanding the foundation for population-based anxiety ma	\$33,984.00	100.00	\$33,984.00
Prochaska,James O	WCPI	Cancer Prevention Res. Ctr	A&S	Health Care innovation challenge	\$1,352,265.00	10.00	\$135,226.50
Rattan,Susan M	AWPI	Cancer Prevention Res. Ctr	A&S	Project Early Vocabulary Intervention	\$124,680.00	100.00	\$124,680.00
Rossi,Joseph S	AWPI	Cancer Prevention Res. Ctr	A&S	Analyzing Mechanisms of Cancer Risk Behavior Changes	\$76,750.00	100.00	\$76,750.00
Wood,Mark	AWPI	Cancer Prevention Res. Ctr	A&S	Integrated alcohol and sexual assault intervention for c	\$29,313.00	100.00	\$29,313.00
Dwyer,Jason R	AWPI	Chemistry	A&S	Enhancing molecular recognition biosensing with nanopore	\$7,977.00	100.00	\$7,977.00
Euler,William B	WCPI	Chemistry	A&S	Fundamental Investigations of Damage Mechanisms	\$693,841.00	25.00	\$173,460.25
Kiesewetter,Matthew K	AWPI	Chemistry	A&S	ELECTROSTATICALLY TETHERED CATALYSTS FOR THE RATE ACCELE	\$100,000.00	100.00	\$100,000.00
Levine,Mindy	WCPI	Chemistry	A&S	Multifunctional colloidal particles as dispersants for m	\$315,042.00	40.00	\$126,016.80
Levine,Mindy	WCPI	Chemistry	A&S	Multifunctional colloidal particles as dispersants for m	\$91,575.00	40.00	\$36,630.00
Levine,Mindy	AWPI	Chemistry	A&S	Tuning Fluorescence Energy Transfer for Carcinogen	\$15,000.00	100.00	\$15,000.00
Levine,Mindy	PI	Chemistry	A&S	Detecting carcinogens in complex environments via energy	\$187,970.00	100.00	\$187,970.00
Lucht,Brett L	AWPI	Chemistry	A&S	Fundamental Investigations of Damage Mechanisms	\$693,841.00	50.00	\$346,920.50
Lucht,Brett L	AWPI	Chemistry	A&S	Innovative manufacturing and Materials for Low Cost Lith	\$95,363.00	100.00	\$95,363.00
Lucht,Brett L	AWPI	Chemistry	A&S	Development of Novel Electrolyte Additives	\$50,000.00	100.00	\$50,000.00
Oxley,Jimmie C	AWPI	Chemistry	A&S	center of excellence for explosives	\$46,842.00	50.00	\$23,421.00
Oxley,Jimmie C	AWPI	Chemistry	A&S	AWARENESS AND LOCALIZATION OF EXPLOSIVES-RELATED THREATS	\$325,000.00	100.00	\$325,000.00
Smith,James L	WCPI	Chemistry	A&S	center of excellence for explosives	\$46,842.00	50.00	\$23,421.00
Dipippo,Lisa	WCPI	Computer Science	A&S	Open cyber challenge platform for information assurance,	\$99,543.00	50.00	\$49,771.50
Fay-Wolfe,Victor	AWPI	Computer Science	A&S	Open cyber challenge platform for information assurance,	\$99,543.00	50.00	\$49,771.50
Peckham,Joan M	WCPI	Computer Science	A&S	URI Robert Noyce teacher scholarship program	\$1,194,051.00	5.00	\$59,702.55
Puggioni,Gavino	OTH	Dean Arts & Sciences	A&S	TEMPORAL TRENDS IN OCEAN SURFACE	\$32,798.00	34.00	\$11,151.32
Puggioni,Gavino	OTH	Dean Arts & Sciences	A&S	TEMPORAL TRENDS IN OCEAN SURFACE	\$32,799.00	34.00	\$11,151.66
Gorman,Kathleen S	PI	Feinstein Hunger Center	A&S	SNAP OUTREACH PROJECT 2014	\$797,488.00	100.00	\$797,488.00
Hobbs,Renee	AWPI	Grad-Library & Info Studies	A&S	MEDIA SMART PARTNERSHIPS: BUILDING PARTNERSHIPS TO SUPPO	\$50,000.00	100.00	\$50,000.00
Mather,Jan R	AWPI	History	A&S	CI - ARHEOLOGICAL OVERVIEW AND ASSESSMENT OF CI - ARHEOL	\$110,000.00	100.00	\$110,000.00
Mather,Jan R	AWPI	History	A&S	CI - Atlantic Deepwater Canyons	\$90,500.00	100.00	\$90,500.00
He,Wayne Wenchao	AWPI	Languages	A&S	Chinese Language Prof. Pathways Program	\$419,870.00	100.00	\$419,870.00
Libertini,Jessica M	WCPI	Mathematics	A&S	URI Robert Noyce teacher scholarship program	\$1,194,051.00	5.00	\$59,702.55
Medina-Bonifant,Araceli	AWPI	Mathematics	A&S	CONFERENCE IN HOLOMORPHIC DYNAMICS IN ONE AND SEVERAL...	\$49,130.00	100.00	\$49,130.00
Baxter,Christopher	WCPI	Ocean Engineering	A&S	CI-Phase 5:Fine grid coastal modeling of relevant tsunam	\$75,214.00	20.00	\$15,042.80
Andreev,Oleg A	WCPI	Physics	A&S	Mapping PH at the surface of individual cells	\$223,343.50	50.00	\$111,671.75
Ganikhanov,Feruz	PI	Physics	A&S	CAREER: A NOVEL NONLINEAR MOCROSCOPY SYSTEM	\$184,961.00	100.00	\$184,961.00
Ganikhanov,Feruz	PI	Physics	A&S	CAREER: A NOVEL NONLINEAR MOCROSCOPY SYSTEM	\$95,730.00	100.00	\$95,730.00
Reshetnyak,Yana O	AWPI	Physics	A&S	Mapping PH at the surface of individual cells	\$223,343.50	50.00	\$111,671.75
Harlow,Lisa L	AWPI	Psychology	A&S	Editorial Expenses Supplement	\$23,379.00	100.00	\$23,379.00
Weyandt,Lisa L	AWPI	Psychology	A&S	Longitudinal outcome of college students with ADHD	\$134,265.00	100.00	\$134,265.00
Bovy,Kristine M	AWPI	Sociology & Anthropology	A&S	CI-Collaborative Research:Impacts of abrupt environmenta	\$22,477.00	100.00	\$22,477.00
Garcia-Quijano,Carlos G.	WCPI	Sociology & Anthropology	A&S	An integrated assessment of an important but understudie	\$30,567.00	25.00	\$7,641.75
Reynolds,Nedra	AWPI	Writing & Rhetoric	A&S	JACOB K JAVITS FELLOWS	\$44,724.00	100.00	\$44,724.00
<b>COLLEGE TOTAL</b>							<b>\$4,450,973.18</b>

**COLLEGE OF BUSINESS ADMINISTRATION**

Rosen,Deborah E	AWPI	Faculty-Instruction	BUS	RIDOT PORTION OF JOINT RIDOT/URITC RESEARCH PROJECT	\$18,605.00	100.00	\$18,605.00
Rosen,Deborah E	AWPI	Faculty-Instruction	BUS	RIDOT PORTION OF JOINT RIDOT/URITC RESEARCH PROJECT	\$44,278.00	100.00	\$44,278.00
Rosen,Deborah E	AWPI	Faculty-Instruction	BUS	RIDOT PORTION OF JOINT RIDOT/URITC RESEARCH PROJECT	\$9,449.00	100.00	\$9,449.00

**COLLEGE TOTAL**
**\$72,332.00**
**COLLEGE OF CONTINUING EDUCATION**

Quina,Kathryn K	WCPI	Dean CCE	CCE	Recruit and educate local at-risk adults and youth (RELA	\$665,229.00	30.00	\$199,568.70
-----------------	------	----------	-----	--	--------------	-------	--------------

**COLLEGE TOTAL**
**\$199,568.70**
**COLLEGE OF ENGINEERING**

Bose,Arijit	AWPI	Chemical Engineering	EGR	The Science & Technology of Dispersants as Relevant to	\$60,656.00	44.00	\$26,688.64
Bose,Arijit	WCPI	Chemical Engineering	EGR	Multifunctional stimuli-responsive core-shell nanopartic	\$329,904.00	50.00	\$164,952.00
Bose,Arijit	WCPI	Chemical Engineering	EGR	Fundamental Investigations of Damage Mechanisms	\$693,841.00	25.00	\$173,460.25
Bose,Arijit	AWPI	Chemical Engineering	EGR	Direct Imaging of Transient Nanostructures	\$9,772.00	100.00	\$9,772.00
Bose,Arijit	AWPI	Chemical Engineering	EGR	Multifunctional colloidal particles as dispersants for m	\$315,042.00	60.00	\$189,025.20
Bose,Arijit	AWPI	Chemical Engineering	EGR	Multifunctional colloidal particles as dispersants for m	\$91,575.00	60.00	\$54,945.00
Bothun,Geoffrey D	WCPI	Chemical Engineering	EGR	The Science & Technology of Dispersants as Relevant to	\$60,656.00	44.00	\$26,688.64
Bothun,Geoffrey D	AWPI	Chemical Engineering	EGR	Multifunctional stimuli-responsive core-shell nanopartic	\$329,904.00	50.00	\$164,952.00
Bothun,Geoffrey D	AWPI	Chemical Engineering	EGR	Nanoparticle-bacterial membrane interactions and their	\$88,844.00	100.00	\$88,844.00
Brown,Richard	AWPI	Chemical Engineering	EGR	Advanced Manufacturing	\$3,333.00	100.00	\$3,333.00
Brown,Richard	AWPI	Chemical Engineering	EGR	Advanced Manufacturing	\$2,500.00	100.00	\$2,500.00
Greenfield,Michael L	AWPI	Chemical Engineering	EGR	Rheology of Rhode Island asphalts:modeling and interpret	\$10,014.00	100.00	\$10,014.00
Gregory,Otto J	AWPI	Chemical Engineering	EGR	AgSnO Powder Development	\$24,000.00	100.00	\$24,000.00
Lucia,Angelo	AWPI	Chemical Engineering	EGR	Modeling the phase behavior of CO2 sequestration	\$55,000.00	100.00	\$55,000.00
Meenach,Samantha A	AWPI	Chemical Engineering	EGR	In-vitro analysis of dry powder aerosol particles for pu	\$10,000.00	100.00	\$10,000.00
Park,Eugene	WCPI	Chemical Engineering	EGR	RI PEP-Rhode Island public energy partnership	\$17,283.00	5.00	\$864.15
Park,Eugene	WCPI	Chemical Engineering	EGR	RI PEP-Rhode Island public energy partnership	\$54,878.00	5.00	\$2,743.90
Bradshaw,Aaron S.	WCPI	Civil and Environmental Engint	EGR	Starfish versatile automated shallow-water anchor	\$28,508.00	20.00	\$5,701.60
Bradshaw,Aaron S.	AWPI	Civil and Environmental Engint	EGR	Performance of micropiles in Rhode Island soils	\$61,943.00	100.00	\$61,943.00
Craver,Vinka A	PI	Civil and Environmental Engint	EGR	RISG: Farrah Solomon fellowship	\$22,500.00	100.00	\$22,500.00
Craver,Vinka A	AWPI	Civil and Environmental Engint	EGR	Collaborative Research:The Antimicrobial Properties of	\$27,734.00	50.00	\$13,867.00
Craver,Vinka A	AWPI	Civil and Environmental Engint	EGR	Sustainable sanitation strategies for peri-urban and rur	\$14,805.00	100.00	\$14,805.00
Craver,Vinka A	PI	Civil and Environmental Engint	EGR	MS4 construction site runoff control environment results	\$5,000.00	100.00	\$5,000.00
Craver,Vinka A	AWPI	Civil and Environmental Engint	EGR	MS4 construction site runoff control environmental resul	\$151,417.00	100.00	\$151,417.00
Craver,Vinka A	AWPI	Civil and Environmental Engint	EGR	Collaborative Research:The Antimicrobial Properties of	\$9,974.00	50.00	\$4,987.00
Craver,Vinka A	PI	Civil and Environmental Engint	EGR	CAREER: BACTERIAL ADAPTATION MECHANISM	\$51,104.00	100.00	\$51,104.00
Craver,Vinka A	AWPI	Civil and Environmental Engint	EGR	Joint research project RIDOT/URITC:Contaminant accumulat	\$106,430.00	60.00	\$63,858.00
Gindy,Mayrai	AWPI	Civil and Environmental Engint	EGR	Analysis of Permit Vehicle Loads in Rhode Island	\$38,922.00	100.00	\$38,922.00
Gindy,Mayrai	AWPI	Civil and Environmental Engint	EGR	Analysis of bridge deck smoothness vs. in-place geometry	\$131,370.00	100.00	\$131,370.00
Gindy,Mayrai	AWPI	Civil and Environmental Engint	EGR	Analysis of bridge deck smoothness vs. in-place geometry	\$6,900.00	100.00	\$6,900.00
Thiem,Leon T	AWPI	Civil and Environmental Engint	EGR	SUPPORT FOR WATER RESOURCES CNTR	\$92,335.00	100.00	\$92,335.00
Gregory,Otto J	AWPI	Dean Engineering	EGR	Student Internship Fire and Large-Scale Explosion...	\$15,113.00	100.00	\$15,113.00
Gregory,Otto J	AWPI	Dean Engineering	EGR	Student Internship Business Analytics - Risk...	\$13,080.00	100.00	\$13,080.00
Wright,Raymond M	AWPI	Dean Engineering	EGR	Northeast alliance for LSAMP at URI	\$66,000.00	100.00	\$66,000.00
He,Haibo	AWPI	Elec, Computer & Bio Engr	EGR	Incremental learning and fusion on multi-modal sensor da	\$130,000.00	50.00	\$65,000.00
Huang,He	AWPI	Elec, Computer & Bio Engr	EGR	Building the foundation of clinical practice of EMG patt	\$1.00	100.00	\$1.00
Kay,Steven M	AWPI	Elec, Computer & Bio Engr	EGR	Multi-domain intelligence	\$40,000.00	100.00	\$40,000.00
Kay,Steven M	WCPI	Elec, Computer & Bio Engr	EGR	Incremental learning and fusion on multi-modal sensor da	\$130,000.00	50.00	\$65,000.00
Yang,Ken Q	AWPI	Elec, Computer & Bio Engr	EGR	Joint Research Between URI and HGST of WD	\$51,000.00	100.00	\$51,000.00

Boving,Thomas B	WCPI	Engineering Computer Center	EGR	Joint research project RIDOT/URITC:Contaminant accumul	\$106,430.00	40.00	\$42,572.00
Swift,Judith M	AWPI	GSO Coastal Institute	EGR	CI- DOD MEMBERSIP IN NAC/CESU	\$10,000.00	100.00	\$10,000.00
Nassersharif,Bahram	PI	Mech., Ind., Sys. Engineering	EGR	NEEPRI-NRC scholarships	\$128,497.00	100.00	\$128,497.00
Shukla,Arun	AWPI	Mech., Ind., Sys. Engineering	EGR	DEFORMATION AND DAMAGE MECHANISMS	\$10,000.00	100.00	\$10,000.00
Shukla,Arun	AWPI	Mech., Ind., Sys. Engineering	EGR	Experimental and numerical investigation on fundamental	\$50,000.00	100.00	\$50,000.00
Shukla,Arun	AWPI	Mech., Ind., Sys. Engineering	EGR	THE BLAST PERFORM OF MARINE COMPST AND SANDWCH STRCTRS U	\$30,000.00	100.00	\$30,000.00
Shukla,Arun	AWPI	Mech., Ind., Sys. Engineering	EGR	THE BLAST PERFORM OF MARINE COMPST AND SANDWCH STRCTRS U	\$61,646.00	100.00	\$61,646.00
Shukla,Arun	AWPI	Mech., Ind., Sys. Engineering	EGR	Experimental and numerical investigation on fundamental	\$50,000.00	100.00	\$50,000.00
Shukla,Arun	AWPI	Mech., Ind., Sys. Engineering	EGR	Near Field Shock Response of Composite Panels	\$20,000.00	100.00	\$20,000.00
Grilli,Annette R	WCPI	Ocean Engineering	EGR	PHASE 4 BASE WORK: FINE GRID COASTAL	\$15,158.00	80.00	\$12,126.40
Grilli,Annette R	WCPI	Ocean Engineering	EGR	Detailed site-specific tsunami hazard assessments for oy	\$32,546.00	50.00	\$16,273.00
Grilli,Annette R	WCPI	Ocean Engineering	EGR	CI-Phase 5:Fine grid coastal modeling of relevant tsunam	\$75,214.00	20.00	\$15,042.80
Grilli,Stephan T	AWPI	Ocean Engineering	EGR	MozambiqueGas Development:Tsunami run-up Study	\$11,999.00	100.00	\$11,999.00
Grilli,Stephan T	AWPI	Ocean Engineering	EGR	PHASE 4 BASE WORK: FINE GRID COASTAL	\$15,158.00	20.00	\$3,031.60
Grilli,Stephan T	AWPI	Ocean Engineering	EGR	Development and validation of an efficient hybrid-CFD me	\$150,000.00	100.00	\$150,000.00
Grilli,Stephan T	AWPI	Ocean Engineering	EGR	Detailed site-specific tsunami hazard assessments	\$32,546.00	100.00	\$32,546.00
Grilli,Stephan T	AWPI	Ocean Engineering	EGR	Detailed site-specific tsunami hazard assessments for oy	\$32,546.00	50.00	\$16,273.00
Grilli,Stephan T	AWPI	Ocean Engineering	EGR	Modeling Tsunami inundation and hazard for the US east c	\$34,251.00	100.00	\$34,251.00
Grilli,Stephan T	AWPI	Ocean Engineering	EGR	CI-Phase 5:Fine grid coastal modeling of relevant tsunam	\$75,214.00	30.00	\$22,564.20
Grilli,Stephan T	AWPI	Ocean Engineering	EGR	Development and validation of an efficient hybrid-CFD me	\$150,000.00	100.00	\$150,000.00
Hu,Sau-Lon	WCPI	Ocean Engineering	EGR	LOW COST ACOUSTIC TRANSMITTER	\$40,000.00	50.00	\$20,000.00
Hu,Sau-Lon	WCPI	Ocean Engineering	EGR	LOW COST ACOUSTIC TRANSMITTER	\$51,100.00	50.00	\$25,550.00
Licht,Stephen C	AWPI	Ocean Engineering	EGR	Dev an aerial imaging system using a robotic helicopter	\$133,057.00	73.00	\$97,131.61
Miller,James H	AWPI	Ocean Engineering	EGR	The effects of sediment properties on low frequency acou	\$130,000.00	50.00	\$65,000.00
Miller,James H	AWPI	Ocean Engineering	EGR	The effects of sediment properties on low frequency acou	\$50,000.00	50.00	\$25,000.00
Potty,Gopu R	WCPI	Ocean Engineering	EGR	The effects of sediment properties on low frequency acou	\$50,000.00	50.00	\$25,000.00
Potty,Gopu R	WCPI	Ocean Engineering	EGR	The effects of sediment properties on low frequency acou	\$130,000.00	50.00	\$65,000.00
Vincent,Harold T.	AWPI	Ocean Engineering	EGR	Starfish versatile automated shallow-water anchor	\$28,508.00	80.00	\$22,806.40
Vincent,Harold T.	AWPI	Ocean Engineering	EGR	LOW COST ACOUSTIC TRANSMITTER	\$40,000.00	50.00	\$20,000.00
Vincent,Harold T.	AWPI	Ocean Engineering	EGR	LOW COST ACOUSTIC TRANSMITTER	\$51,100.00	50.00	\$25,550.00
Vincent,Harold T.	AWPI	Ocean Engineering	EGR	COEUT: PARS BUOY	\$19,665.56	70.00	\$13,765.89

**COLLEGE TOTAL**

**\$3,259,312.28**

**COLLEGE OF THE ENVIRONMENT AND LIFE SCIENCES**

Cohen,Paul S	AWPI	Biochem-Microb-Molecular Gei	ELS	Symbiosisof E.Coli and the Intestinal Microbiota in a Mo	\$12,106.00	100.00	\$12,106.00
Cohen,Paul S	AWPI	Biochem-Microb-Molecular Gei	ELS	Symbiosisof E.Coli and the Intestinal Microbiota in a Mo	\$167,625.00	100.00	\$167,625.00
Cohen,Paul S	AWPI	Biochem-Microb-Molecular Gei	ELS	Symbiosisof E.Coli and the Intestinal Microbiota in a Mo	\$18,625.00	100.00	\$18,625.00
De Groot,Anne	AWPI	Biochem-Microb-Molecular Gei	ELS	Computationally optimized anti-staphylococcal biotherape	\$59,680.00	100.00	\$59,680.00
Howlett,Niall G	AWPI	Biochem-Microb-Molecular Gei	ELS	REGULATION OF THE MONO-UBIQUITINATION OF THE FANCONI ANE	\$3,128.00	100.00	\$3,128.00
Howlett,Niall G	AWPI	Biochem-Microb-Molecular Gei	ELS	REGULATION OF THE MONO-UBIQUITINATION OF THE FANCONI ANE	\$15,592.00	100.00	\$15,592.00
Howlett,Niall G	AWPI	Biochem-Microb-Molecular Gei	ELS	REGULATION OF THE MONO-UBIQUITINATION OF THE FANCONI ANE	\$28,806.00	100.00	\$28,806.00
Kausch,Albert P	AWPI	Biochem-Microb-Molecular Gei	ELS	Haverst plus transgenic products to increase carotenoid	\$59,582.00	100.00	\$59,582.00
Kausch,Albert P	AWPI	Biochem-Microb-Molecular Gei	ELS	GATES: HYBRID TECHNOLOGIES FOR CEREAL CROPS	\$214,447.00	50.00	\$107,223.50
Mottinger,John P	WCPI	Biochem-Microb-Molecular Gei	ELS	GATES: HYBRID TECHNOLOGIES FOR CEREAL CROPS	\$214,447.00	50.00	\$107,223.50
Nelson,David R	AWPI	Biochem-Microb-Molecular Gei	ELS	MOLECULAR BASIS FOR PATHOGENESIS	\$50,000.00	50.00	\$25,000.00
Rothman,Alan	PI	Biochem-Microb-Molecular Gei	ELS	IMMUNE-BASED INTERVENTIONS AGAINST INFECTIOUS DISEASES	\$2,390,922.00	100.00	\$2,390,922.00
Rothman,Alan	AWPI	Biochem-Microb-Molecular Gei	ELS	DEVELOPMENT OF NIMMUNOLOGY RESEARCH AGENDA TO SUPPORT...	\$39,999.86	100.00	\$39,999.86
Moseman-Valtierra,Serena	AWPI	Biological Sciences	ELS	QUANTIFYING AND MODELING GREENHOUSE GAS EMISSIONS FROM T	\$10,000.00	100.00	\$10,000.00
Moseman-Valtierra,Serena	AWPI	Biological Sciences	ELS	Impacts of Anthropogenic Nutrient Pollution on...	\$12,000.00	100.00	\$12,000.00
Preisser,Evan L	PI	Biological Sciences	ELS	CI-Herbivore interactions and plant responses:From folia	\$286,000.00	100.00	\$286,000.00
Roberts,Alison	AWPI	Biological Sciences	ELS	Functional analysis of CESA proteins in physcomitrella p	\$121,998.00	100.00	\$121,998.00
Roberts,Alison	AWPI	Biological Sciences	ELS	Diversification and functional specialization of cellul	\$199,419.00	100.00	\$199,419.00
Thornber,Carol S	AWPI	Biological Sciences	ELS	Mechanisms for success and potential impacts of an invas	\$13,104.00	100.00	\$13,104.00

Thorner,Carol S	WCPI	Biological Sciences	ELS	Dev an aerial imaging system using a robotic helicopter	\$133,057.00	27.00	\$35,925.39
Wilga,Cheryl A	AWPI	Biological Sciences	ELS	CONFERENCE: BROADENING PARTICIPATION IN THE SOCIETY...	\$25,000.00	100.00	\$25,000.00
Faubert,Heather H	AWPI	Cooperative Extension	ELS	Pollinator Conservation & Pasture Weed Management FY2014	\$18,000.00	100.00	\$18,000.00
Gold,Marion S	AWPI	Cooperative Extension	ELS	Management of ocean stateclean cities FY12	\$15,000.00	10.00	\$1,500.00
Gold,Marion S	AWPI	Cooperative Extension	ELS	Management of ocean stateclean cities FY12	\$1,250.00	10.00	\$125.00
Gold,Marion S	AWPI	Cooperative Extension	ELS	Management of ocean stateclean cities FY12	\$19,000.00	10.00	\$1,900.00
Gold,Marion S	AWPI	Cooperative Extension	ELS	Management of ocean stateclean cities FY12	\$15,000.00	10.00	\$1,500.00
Horan,Kristina L	AWPI	Cooperative Extension	ELS	2014 RI 4-H MENTORING GRANT	\$41,000.00	100.00	\$41,000.00
Horan,Kristina L	AWPI	Cooperative Extension	ELS	RI 2014 4-H MILITARY PARTNERSHIP GRANT (SUPPLEMENT)	\$9,420.00	100.00	\$9,420.00
Lucht,Wendy A	WCPI	Cooperative Extension	ELS	Management of ocean stateclean cities FY12	\$15,000.00	90.00	\$13,500.00
Lucht,Wendy A	WCPI	Cooperative Extension	ELS	Management of ocean stateclean cities FY12	\$1,250.00	90.00	\$1,125.00
Lucht,Wendy A	WCPI	Cooperative Extension	ELS	Management of ocean stateclean cities FY12	\$19,000.00	90.00	\$17,100.00
Lucht,Wendy A	WCPI	Cooperative Extension	ELS	Management of ocean stateclean cities FY12	\$15,000.00	90.00	\$13,500.00
Martin,Pamela P	AWPI	Cooperative Extension	ELS	RI 2014 OPERATION: MILITARY KIDS GRANT	\$77,550.00	100.00	\$77,550.00
Martin,Pamela P	AWPI	Cooperative Extension	ELS	RI 2014 MILITARY KIDS CAMP GRANT	\$39,960.00	100.00	\$39,960.00
Venturini,Kate E	WCPI	Cooperative Extension	ELS	Outreach at the Roger Williams Park Botanical Center	\$52,000.00	100.00	\$52,000.00
Wright,Heidi A	AWPI	Cooperative Extension	ELS	RI 2014 4-H Military Partnership Grant	\$15,435.00	100.00	\$15,435.00
Kirby,John D	AWPI	Dean Environment Life Scienc	ELS	FY2012 Smith-Lelver 3 (B) and 3 (C) Formula	\$1,004,245.00	100.00	\$1,004,245.00
Kirby,John D	AWPI	Dean Environment Life Scienc	ELS	SHIFTS IN GREENHOUSE GAS EMISSIONS AND PRODUCTIVITY...	\$9,983.00	100.00	\$9,983.00
Kirby,John D	AWPI	Dean Environment Life Scienc	ELS	FY 14 Hatch Formula	\$898,973.00	50.00	\$449,486.50
Rhodes III,Richard C	AWPI	Dean Environment Life Scienc	ELS	Mcintire Stennis FY 14	\$132,988.00	100.00	\$132,988.00
Rhodes III,Richard C	AWPI	Dean Environment Life Scienc	ELS	RI PEP-Rhode Island public energy partnership	\$17,283.00	10.00	\$1,728.30
Rhodes III,Richard C	AWPI	Dean Environment Life Scienc	ELS	USDA RESEARCH UPPORT AGREEMENT	\$6,412.98	100.00	\$6,412.98
Rhodes III,Richard C	AWPI	Dean Environment Life Scienc	ELS	RI PEP-Rhode Island public energy partnership	\$54,878.00	10.00	\$5,487.80
Sholly,Rachel E	WCPI	Dean Environment Life Scienc	ELS	RI PEP-Rhode Island public energy partnership	\$17,283.00	85.00	\$14,690.55
Sholly,Rachel E	WCPI	Dean Environment Life Scienc	ELS	RI PEP-Rhode Island public energy partnership	\$54,878.00	85.00	\$46,646.30
Kirby,John D	AWPI	Env. and Nat. Res. Economics	ELS	The Hatch Actof 1887 (Multistate Fund Research) FY 12	\$760,349.00	100.00	\$760,349.00
Tegawa,Mihoko	WCPI	Env. and Nat. Res. Economics	ELS	DOCTORAL DISSERTATION RESEARCH IN DRMS: A STUDY ON THE..	\$19,782.00	90.00	\$17,803.80
Uchida,Hirotsugu	AWPI	Env. and Nat. Res. Economics	ELS	DOCTORAL DISSERTATION RESEARCH IN DRMS: A STUDY ON THE..	\$19,782.00	10.00	\$1,978.20
Bengtson,David A	AWPI	Fish-Animal-Vet-Science	ELS	ALTERNATIVE FEEDS AND PROCESSING FOR FRESHWATER FISH	\$10,001.00	100.00	\$10,001.00
Bengtson,David A	AWPI	Fish-Animal-Vet-Science	ELS	ALTERNATIVE FEEDS AND PROCESSING FOR FRESHWATER FISH	\$10,001.00	100.00	\$10,001.00
Bengtson,David A	AWPI	Fish-Animal-Vet-Science	ELS	Modeling of common water bodies - phase 2	\$28,000.00	100.00	\$28,000.00
Bengtson,David A	AWPI	Fish-Animal-Vet-Science	ELS	Aquaculture Carrying Capacity and Water Quality Manageme	\$233,027.00	51.00	\$118,183.77
Castro,Kathleen	WCPI	Fish-Animal-Vet-Science	ELS	Coll Mgmt For Sustainable Fisheries Future	\$326,000.00	10.00	\$32,600.00
Castro,Kathleen	WCPI	Fish-Animal-Vet-Science	ELS	Coll Mgmt For Sustainable Fisheries Future	\$2,000,000.00	10.00	\$200,000.00
Gomez-Chiarri,Marta	AWPI	Fish-Animal-Vet-Science	ELS	FY 13 Animal Health CF	\$4,835.00	100.00	\$4,835.00
Husband,Thomas P	WCPI	Fish-Animal-Vet-Science	ELS	Creating Habitat for New England Cottontail in R.I.	\$44,991.00	100.00	\$44,991.00
Lazar,Najih	AWPI	Fish-Animal-Vet-Science	ELS	Pilot Study:Abundance and distribution of blue crab (cal	\$70,935.00	100.00	\$70,935.00
Rhodes III,Richard C	WCPI	Fish-Animal-Vet-Science	ELS	W. Africa Analytical Support Services& Evaluations	\$173,537.00	10.00	\$17,353.70
Rhodes III,Richard C	WCPI	Fish-Animal-Vet-Science	ELS	W. Africa Analytical Support Services& Evaluations	\$65,962.70	10.00	\$6,596.27
Rice,Michael A	WCPI	Fish-Animal-Vet-Science	ELS	Aquaculture Carrying Capacity and Water Quality Manageme	\$233,027.00	49.00	\$114,183.23
Sartini,Becky L	PI	Fish-Animal-Vet-Science	ELS	GLOBAL DYNAMICS OF SPERM TRANSCRIPT PROFILES DURING CAPA	\$149,797.00	100.00	\$149,797.00
Skrobe,Laura G	AWPI	Fish-Animal-Vet-Science	ELS	Industry based survey on black sea bass utilizing ventle	\$21,846.00	100.00	\$21,846.00
Zawia,Nasser H	AWPI	Fish-Animal-Vet-Science	ELS	GRAD RESEARCH FELLOWSHIP PROGRAM- JUSTIN RICHARD	\$88,000.00	100.00	\$88,000.00
Kirby,John D	AWPI	Food Science And Nutrition	ELS	FY2014 Smith-Lelver 3 (B) and 3 (C) Formula	\$1,059,762.00	100.00	\$1,059,762.00
Kirby,John D	AWPI	Food Science And Nutrition	ELS	FY 14 RI Expanded Food & Nutrition Education Program	\$373,750.00	50.00	\$186,875.00
Pivarnik,Lori F	AWPI	Food Science And Nutrition	ELS	The Rhode Island Farm to School Project	\$14,629.00	100.00	\$14,629.00
Pivarnik,Lori F	AWPI	Food Science And Nutrition	ELS	The Rhode Island Farm to School Project	\$113.00	100.00	\$113.00
Pivarnik,Lori F	AWPI	Food Science And Nutrition	ELS	Inactivation of Enteric Foodborne Viruses in High Risk	\$41,146.00	100.00	\$41,146.00
Rhodes III,Richard C	WCPI	Food Science And Nutrition	ELS	FY 14 Hatch Formula	\$898,973.00	50.00	\$449,486.50
Sebelia,Linda M	AWPI	Food Science And Nutrition	ELS	CELS: INTEGRATING NUTRITION EDUCATION INTO PROVIDENCE...	\$80,000.00	100.00	\$80,000.00
Sebelia,Linda M	WCPI	Food Science And Nutrition	ELS	FY 14 RI Expanded Food & Nutrition Education Program	\$373,750.00	50.00	\$186,875.00
Sebelia,Linda M	AWPI	Food Science And Nutrition	ELS	URI SNAP- ED 2014	\$828,519.00	100.00	\$828,519.00
Boothroyd,Jon C	PI	Geosciences	ELS	Determining Tidal Datums Relative to NAVD88	\$3,890.00	100.00	\$3,890.00
Boothroyd,Jon C	AWPI	Geosciences	ELS	SIDE-SCAN SONAR MAPPING OF SELECTED COASTAL LAGOONS...	\$4,997.00	100.00	\$4,997.00

Boothroyd,Jon C	WCPI	Geosciences	ELS	SAMP	\$100,000.00	40.00	\$40,000.00
Boving,Thomas B	PI	Geosciences	ELS	ADVANCED OXIDATION OF 1, 4-DIOXANE	\$20,204.25	100.00	\$20,204.25
Boving,Thomas B	WCPI	Geosciences	ELS	Collaborative Research:The Antimicrobial Properties of	\$27,734.00	50.00	\$13,867.00
Boving,Thomas B	PI	Geosciences	ELS	ADVANCED OXIDATION OF 1, 4-DIOXANE	\$68,694.00	100.00	\$68,694.00
Boving,Thomas B	WCPI	Geosciences	ELS	Collaborative Research:The Antimicrobial Properties of	\$9,974.00	50.00	\$4,987.00
Engelhart,Simon E	AWPI	Geosciences	ELS	Is Sea Level Rising?	\$14,900.00	100.00	\$14,900.00
Engelhart,Simon E	PI	Geosciences	ELS	RESPONSE TO ECOSYSTEM FUNCTION IN MANGROVE FORESTS TO SE	\$13,318.62	100.00	\$13,318.62
Savage,Brian K	AWPI	Geosciences	ELS	Short period, anelastic and anisotropic, waveform-based	\$126,000.00	100.00	\$126,000.00
Savage,Brian K	AWPI	Geosciences	ELS	Short period, anelastic and anisotropic, waveform-based	\$210,000.00	100.00	\$210,000.00
Dalton,Tracey J	AWPI	Marine Affairs	ELS	Decision-support for the economic analysis of trade-offs	\$3,837.00	100.00	\$3,837.00
August,Peter V	AWPI	Natural Res. Science	ELS	FY 13 Renewable Resources RREA	\$45,887.00	100.00	\$45,887.00
August,Peter V	AWPI	Natural Res. Science	ELS	CESU: Local Resolution National Hydrography	\$25,000.00	50.00	\$12,500.00
August,Peter V	AWPI	Natural Res. Science	ELS	RES BASED GEOSPTEL DTA COLL ANYL AND DEL IN SUPP OF ENTRP	\$112,070.00	100.00	\$112,070.00
August,Peter V	AWPI	Natural Res. Science	ELS	CI - ELEVATION MAPPING OF CRITICAL PARK AREAS FOR...	\$820,000.00	100.00	\$820,000.00
August,Peter V	AWPI	Natural Res. Science	ELS	CI - ACQUISITION COORDINATION, COMPILATION, DATE MGMT.	\$775,500.00	100.00	\$775,500.00
August,Peter V	AWPI	Natural Res. Science	ELS	CI-FY14 TO FY18 CONTINUING ENTERPRISE GIS DATABASE DEV.	\$158,930.00	100.00	\$158,930.00
August,Peter V	AWPI	Natural Res. Science	ELS	CI-FY2013 GIS support to NUWC	\$24,039.00	100.00	\$24,039.00
August,Peter V	AWPI	Natural Res. Science	ELS	CI - FY2014 GIS Support to NUWC (FY 14 1ST TASK ORDER)	\$25,000.00	100.00	\$25,000.00
August,Peter V	AWPI	Natural Res. Science	ELS	CI-SUSTAINING AND ENHANCING ACCESS TO THE RHODE ISLAND	\$21,180.00	34.00	\$7,201.20
August,Peter V	AWPI	Natural Res. Science	ELS	GIS Support to NUWC	\$11,999.00	34.00	\$4,079.66
August,Peter V	AWPI	Natural Res. Science	ELS	CI - FY2014 GIS Support to NUWC - 3rd Task Order	\$40,098.24	34.00	\$13,633.40
Bonyng, Gregory H	WCPI	Natural Res. Science	ELS	CI-SUSTAINING AND ENHANCING ACCESS TO THE RHODE ISLAND	\$21,180.00	33.00	\$6,989.40
Damon,Christopher P	WCPI	Natural Res. Science	ELS	GIS Support to NUWC	\$11,999.00	33.00	\$3,959.67
Damon,Christopher P	WCPI	Natural Res. Science	ELS	CI - FY2014 GIS Support to NUWC - 3rd Task Order	\$40,098.24	33.00	\$13,232.41
Forrester,Graham E	AWPI	Natural Res. Science	ELS	An integrated assessment of an important but understudie	\$30,567.00	75.00	\$22,925.25
Forrester,Graham E	AWPI	Natural Res. Science	ELS	Anchor Damage to Coral Reefs and Mooring Buoys as...	\$12,000.00	100.00	\$12,000.00
Gold,Arthur J	WCPI	Natural Res. Science	ELS	CI-RHODE ISLAND LAKE AND RIVER VOLUNTEER-BASED MONITORIN	\$57,500.00	10.00	\$5,750.00
Gold,Arthur J	WCPI	Natural Res. Science	ELS	CI-RHODE ISLAND LAKE AND RIVER VOLUNTEER-BASED MONITORIN	\$50,000.00	10.00	\$5,000.00
Gold,Arthur J	WCPI	Natural Res. Science	ELS	CI-RHODE ISLAND LAKE AND RIVER VOLUNTEER-BASED MONITORIN	\$50,000.00	10.00	\$5,000.00
Gold,Arthur J	OTH	Natural Res. Science	ELS	URITC:The effects of reduced mowing in meadows on storm	\$133,997.00	5.00	\$6,699.85
Green,Linda T	AWPI	Natural Res. Science	ELS	CI-RHODE ISLAND LAKE AND RIVER VOLUNTEER-BASED MONITORIN	\$57,500.00	45.00	\$25,875.00
Green,Linda T	AWPI	Natural Res. Science	ELS	CI-RHODE ISLAND LAKE AND RIVER VOLUNTEER-BASED MONITORIN	\$50,000.00	45.00	\$22,500.00
Green,Linda T	AWPI	Natural Res. Science	ELS	CI-RHODE ISLAND LAKE AND RIVER VOLUNTEER-BASED MONITORIN	\$50,000.00	45.00	\$22,500.00
Herron,Elizabeth M	WCPI	Natural Res. Science	ELS	CI-RHODE ISLAND LAKE AND RIVER VOLUNTEER-BASED MONITORIN	\$57,500.00	45.00	\$25,875.00
Herron,Elizabeth M	WCPI	Natural Res. Science	ELS	CI-RHODE ISLAND LAKE AND RIVER VOLUNTEER-BASED MONITORIN	\$50,000.00	45.00	\$22,500.00
Herron,Elizabeth M	WCPI	Natural Res. Science	ELS	CI-RHODE ISLAND LAKE AND RIVER VOLUNTEER-BASED MONITORIN	\$50,000.00	45.00	\$22,500.00
Husband,Thomas P	AWPI	Natural Res. Science	ELS	MAMMALIAN DIVERSITY IN A COFFEE AGROECOSYSTEM IN THE...	\$1,500.00	100.00	\$1,500.00
Karraker,Nancy	PI	Natural Res. Science	ELS	INVENTORY AND MONITORING OF AMPHIBIANS AND REPTILES AT..	\$130,760.00	100.00	\$130,760.00
Labash,Charles	WCPI	Natural Res. Science	ELS	CI-SUSTAINING AND ENHANCING ACCESS TO THE RHODE ISLAND	\$21,180.00	33.00	\$6,989.40
Labash,Charles	WCPI	Natural Res. Science	ELS	GIS Support to NUWC	\$11,999.00	33.00	\$3,959.67
Labash,Charles	WCPI	Natural Res. Science	ELS	CI - FY2014 GIS Support to NUWC - 3rd Task Order	\$40,098.24	33.00	\$13,232.41
Mccann,Alyson	AWPI	Natural Res. Science	ELS	INCORPORATING THE US EPA TOXIC...	\$14,166.00	100.00	\$14,166.00
Meyerson,Laura A	AWPI	Natural Res. Science	ELS	URITC:The effects of reduced mowing in meadows on storm	\$133,997.00	70.00	\$93,797.90
Meyerson,Laura A	AWPI	Natural Res. Science	ELS	Collab.Research:Latitudinal variation in invasive plant-	\$6,755.00	100.00	\$6,755.00
Meyerson,Laura A	AWPI	Natural Res. Science	ELS	Collab.Research:Latitudinal variation in invasive plant-	\$6,000.00	100.00	\$6,000.00
Morrison,Alisa A	WCPI	Natural Res. Science	ELS	CESU: Local Resolution National Hydrography	\$25,000.00	50.00	\$12,500.00
Paton,Peter	AWPI	Natural Res. Science	ELS	CI - COASTAL BIRD MANAGEMENT PROTOCOLS	\$32,345.00	100.00	\$32,345.00
Paton,Peter	AWPI	Natural Res. Science	ELS	CI - COASTAL BIRD MANAGEMENT PROTOCOLS	\$7,655.00	100.00	\$7,655.00
Stolt,Mark H	AWPI	Natural Res. Science	ELS	Assess dynamic soil properties	\$6,000.00	100.00	\$6,000.00
Stolt,Mark H	AWPI	Natural Res. Science	ELS	CI - A COASTAL SONE SOIL SURVEY IN CONNECTICUT	\$40,000.00	100.00	\$40,000.00
Wang,Yeqiao	AWPI	Natural Res. Science	ELS	Post Hurricane Sandy Salt Marsh Change	\$200,000.00	100.00	\$200,000.00
Alm,Steven	AWPI	Plant Science	ELS	RISK MANAGEMENT AND CROP INSURANCE EDUCATION FOR RI	\$206,000.00	100.00	\$206,000.00
Alm,Steven	AWPI	Plant Science	ELS	RISK MANAGEMENT AND CROP INSURANCE EDU. FOR RI	\$5,000.00	100.00	\$5,000.00
Alm,Steven	AWPI	Plant Science	ELS	Bluegrass Weevil	\$10,000.00	100.00	\$10,000.00
Brown,Rebecca N	OTH	Plant Science	ELS	URITC:The effects of reduced mowing in meadows on storm	\$133,997.00	25.00	\$33,499.25

Brown,Rebecca N	AWPI	Plant Science	ELS	Improving Yield and Quality of RI-Grown Melons through	\$31,865.00	100.00	\$31,865.00
Casagrande,Richard A	AWPI	Plant Science	ELS	REARING AND RELEASING SWALLOW-WORT BIOLOGICAL CONTROL AG	\$92,068.00	100.00	\$92,068.00
Casagrande,Richard A	AWPI	Plant Science	ELS	IPM COORDINATION IN RHODE ISLAND:BUILDING ON SUCCESS...	\$42,700.00	100.00	\$42,700.00
Faubert,Heather H	AWPI	Plant Science	ELS	Northeast plant diagnostic network	\$16,875.00	100.00	\$16,875.00
Radin,Andrew	AWPI	Plant Science	ELS	New England Fruit and Vegetable Scouting Network	\$3,037.00	100.00	\$3,037.00
Tewksbury,Elizabeth A	AWPI	Plant Science	ELS	BIOLOGICAL CONTROL OF MILE-A-MINUTE WEED	\$11,465.00	100.00	\$11,465.00
Tewksbury,Elizabeth A	AWPI	Plant Science	ELS	BIOLOGICAL CONTROL OF SWALLOW-WORTS, VINCETOXICUM INGRUM	\$10,000.00	100.00	\$10,000.00
Tewksbury,Elizabeth A	AWPI	Plant Science	ELS	Biological control of lily leaf beetle in Connecticut	\$3,000.00	100.00	\$3,000.00
Tewksbury,Elizabeth A	AWPI	Plant Science	ELS	Biological Control of Mile a Minute	\$17,857.00	100.00	\$17,857.00

**COLLEGE TOTAL**

**\$14,065,630.49**

**GRADUATE SCHOOL OF OCEANOGRAPHY**

Crawford,Brian	AWPI	GSO Coastal Resources Centr	GSO	Coll Mgmt For Sustainable Fisheries Future	\$326,000.00	45.00	\$146,700.00
Crawford,Brian	AWPI	GSO Coastal Resources Centr	GSO	Coll Mgmt For Sustainable Fisheries Future	\$2,000,000.00	45.00	\$900,000.00
Crawford,Brian	PI	GSO Coastal Resources Centr	GSO	OCEAN AND FISHERIES INITIATIVE	\$508,451.00	100.00	\$508,451.00
Crawford,Brian	AWPI	GSO Coastal Resources Centr	GSO	CONSERVATION OF COASTAL ECO-SYSTEMS IN TANZANIA	\$1,150,000.00	50.00	\$575,000.00
Crawford,Brian	AWPI	GSO Coastal Resources Centr	GSO	CI - Study of Illegal Fishing in the Territorial Waters.	\$26,394.00	100.00	\$26,394.00
Kent,Karen L	AWPI	GSO Coastal Resources Centr	GSO	W. Africa Analytical Support Services& Evaluations	\$173,537.00	90.00	\$156,183.30
Kent,Karen L	AWPI	GSO Coastal Resources Centr	GSO	W. Africa Analytical Support Services& Evaluations	\$65,962.70	90.00	\$59,366.43
Mccann,Jennifer	AWPI	GSO Coastal Resources Centr	GSO	SAMP	\$100,000.00	60.00	\$60,000.00
Robadue Jr,Donald D	PI	GSO Coastal Resources Centr	GSO	CI- RETROSPECTIVE GOVERNANCE	\$25,671.00	100.00	\$25,671.00
Tobey,James A	WCPI	GSO Coastal Resources Centr	GSO	Coll Mgmt For Sustainable Fisheries Future	\$326,000.00	45.00	\$146,700.00
Tobey,James A	WCPI	GSO Coastal Resources Centr	GSO	Coll Mgmt For Sustainable Fisheries Future	\$2,000,000.00	45.00	\$900,000.00
Torell,Elin C	WCPI	GSO Coastal Resources Centr	GSO	CONSERVATION OF COASTAL ECO-SYSTEMS IN TANZANIA	\$1,150,000.00	50.00	\$575,000.00
Murray,Cynthia J	AWPI	GSO Facilities	GSO	A Proposal for the Support of Continuing and New...	\$235,000.00	100.00	\$235,000.00
Alberts,Jonathan C	AWPI	GSO Faculty	GSO	UNOLS	\$662,133.00	50.00	\$331,066.50
Alberts,Jonathan C	WCPI	GSO Faculty	GSO	USGS PARTICIPATION IN UNOLS	\$24,139.00	50.00	\$12,069.50
Alberts,Jonathan C	AWPI	GSO Faculty	GSO	UNOLS	\$36,991.00	50.00	\$18,495.50
Alberts,Jonathan C	AWPI	GSO Faculty	GSO	UNOLS	\$91,846.00	100.00	\$91,846.00
Baxter,Christopher	AWPI	GSO Faculty	GSO	SUBMARINE LANDSLIDES OF THE US ATLANTIC CONTINENTAL	\$2,379.25	50.00	\$1,189.62
Belkin,Igor M	AWPI	GSO Faculty	GSO	SEA SURFACE	\$11,700.00	100.00	\$11,700.00
Belkin,Igor M	AWPI	GSO Faculty	GSO	SEA SURFACE	\$11,700.00	100.00	\$11,700.00
Campbell,Robert G	PI	GSO Faculty	GSO	COLL. RESEARCH: CHANGES IN ARCTIC SEA ICE	\$43,523.00	100.00	\$43,523.00
Campbell,Robert G	AWPI	GSO Faculty	GSO	PLANKTONIC ECOSYSTEM	\$11,532.00	100.00	\$11,532.00
Carey,Steven N	AWPI	GSO Faculty	GSO	INVESTIGATION SUBMARINE BASALTIC	\$25,595.00	100.00	\$25,595.00
Carey,Steven N	AWPI	GSO Faculty	GSO	MGSL	\$65,684.00	100.00	\$65,684.00
Codiga,Daniel L	AWPI	GSO Faculty	GSO	CI- CHRP: OBSERVATIONS AND MODELING OF NARRAGANSETT	\$172,503.00	34.00	\$58,651.02
Codiga,Daniel L	AWPI	GSO Faculty	GSO	SCOAP	\$39,884.00	100.00	\$39,884.00
Codiga,Daniel L	AWPI	GSO Faculty	GSO	CI- CHRP: OBSERVATIONS AND MODELING OF NARRAGANSETT	\$226,022.00	34.00	\$76,847.48
Coleman,Dwight F	AWPI	GSO Faculty	GSO	EXPLORATION/EDUCATIN USING E/V NAUTILUS	\$147,000.00	100.00	\$147,000.00
Coleman,Dwight F	WCPI	GSO Faculty	GSO	MARINE TECH FOR TEACHERS AND STUDENTS	\$791,574.00	20.00	\$158,314.80
Coleman,Dwight F	AWPI	GSO Faculty	GSO	SYSEMATIC OCEAN EXPLORATION	\$150,000.00	100.00	\$150,000.00
Collie,Jeremy S	AWPI	GSO Faculty	GSO	CI - Developig a Multispecies Statistical Catch at Age..	\$4,152.00	100.00	\$4,152.00
Collie,Jeremy S	AWPI	GSO Faculty	GSO	CI - Developig a Multispecies Statistical Catch at Age..	\$2,048.00	100.00	\$2,048.00
Cornillon,Peter C	AWPI	GSO Faculty	GSO	Multi Sensor Improved Sea - Surface Temperature (MISST)	\$48,675.00	100.00	\$48,675.00
Cornillon,Peter C	PI	GSO Faculty	GSO	TEMPORAL TRENDS IN OCEAN SURFACE	\$32,798.00	66.00	\$21,646.68
Cornillon,Peter C	PI	GSO Faculty	GSO	TEMPORAL TRENDS IN OCEAN SURFACE	\$32,799.00	66.00	\$21,647.34
Cornillon,Peter C	AWPI	GSO Faculty	GSO	Multi Sensor Improved Sea - Surface Temperature (MISST)	\$49,149.00	100.00	\$49,149.00
Desilva,Annette M	WCPI	GSO Faculty	GSO	UNOLS	\$662,133.00	50.00	\$331,066.50
Desilva,Annette M	AWPI	GSO Faculty	GSO	USGS PARTICIPATION IN UNOLS	\$24,139.00	50.00	\$12,069.50
Desilva,Annette M	WCPI	GSO Faculty	GSO	UNOLS	\$36,991.00	50.00	\$18,495.50
D'Hondt,Steven L	AWPI	GSO Faculty	GSO	JUSTINE SAUVAGE EXP 337	\$12,000.00	100.00	\$12,000.00
D'Hondt,Steven L	WCPI	GSO Faculty	GSO	EARTHCUBE RCN:	\$74,813.00	5.00	\$3,740.65



D'Hondt, Steven L	AWPI	GSO Faculty	GSO	MOCROBIAL TAXA IN SUBSEAFLOOR	\$110,000.00	100.00	\$110,000.00
D'Hondt, Steven L	WCPI	GSO Faculty	GSO	North Atlantic Meridional Circulation During the Last...	\$299,746.00	33.00	\$98,916.18
D'Hondt, Steven L	AWPI	GSO Faculty	GSO	CENTER FOR DARK ENERGY BIOSPHERE INVESTIGATIONS	\$299,752.00	100.00	\$299,752.00
Donohue, Kathleen A	AWPI	GSO Faculty	GSO	DYNAMICS OF THE LOOP	\$493,517.00	100.00	\$493,517.00
Donohue, Kathleen A	AWPI	GSO Faculty	GSO	DYNAMICS OF THE LOOP	\$102,183.00	100.00	\$102,183.00
Donohue, Kathleen A	WCPI	GSO Faculty	GSO	Cross-Frontal Fluxes in the Antarctic Circumpolar	\$895,357.00	33.00	\$295,467.81
Donohue, Kathleen A	AWPI	GSO Faculty	GSO	REU SITE SURFO	\$133,328.00	100.00	\$133,328.00
Gao, Haiying	OTH	GSO Faculty	GSO	CONSTRUCTION OF A NESTED, GLOBAL	\$25,000.00	10.00	\$2,500.00
Ginis, Isaac	PI	GSO Faculty	GSO	IMPROVING THE GFDL, GFDN	\$121,999.00	100.00	\$121,999.00
Ginis, Isaac	AWPI	GSO Faculty	GSO	CI- SUPER-PARAMETERIZATION	\$57,057.00	100.00	\$57,057.00
Ginis, Isaac	AWPI	GSO Faculty	GSO	CI- SUPER-PARAMETERIZATION	\$28,152.00	100.00	\$28,152.00
Ginis, Isaac	AWPI	GSO Faculty	GSO	CI- SUPER-PARAMETERIZATION	\$50,000.00	100.00	\$50,000.00
Hanson Jr, Alfred K	AWPI	GSO Faculty	GSO	URI Component of the Continued Development	\$60,000.00	100.00	\$60,000.00
Heikes, Brian G	AWPI	GSO Faculty	GSO	COLLAB RESEARCH AIRBORNE HYDROGEN	\$37,493.00	100.00	\$37,493.00
Heikes, Brian G	AWPI	GSO Faculty	GSO	PHOTOCHEMICAL OXIDANT RESERVIOR	\$21,420.00	100.00	\$21,420.00
Heikes, Brian G	AWPI	GSO Faculty	GSO	PHOTOCHEMICAL OXIDANT RESERVIOR	\$109,575.00	100.00	\$109,575.00
Heil Jr, Clifford W	AWPI	GSO Faculty	GSO	DEVELMNT OF A BIOGEOCHEMICAL PROXY	\$44,937.00	95.00	\$42,690.15
James-Pirri, Mary Jane	PI	GSO Faculty	GSO	CI- HOPEWELL FURNACE NATIONAL HISTORIC	\$86,954.00	100.00	\$86,954.00
James-Pirri, Mary Jane	AWPI	GSO Faculty	GSO	ASSESSMENT OF SPAWNING HORSESHOE CRABS	\$42,621.00	100.00	\$42,621.00
James-Pirri, Mary Jane	AWPI	GSO Faculty	GSO	ASSESSMENT OF SPAWNING HORSESHOE CRABS	\$34,132.00	100.00	\$34,132.00
Kelley, Katherine A	WCPI	GSO Faculty	GSO	3D DYNAMICS OF BUOYANT	\$145,000.00	10.00	\$14,500.00
Kelley, Katherine A	AWPI	GSO Faculty	GSO	THE ROLE OF OXYGEN FUGACITY	\$62,808.00	100.00	\$62,808.00
Kenney, Robert D	AWPI	GSO Faculty	GSO	QA/QC OVERSIGHT FOR MARINE	\$550.00	100.00	\$550.00
Kenney, Robert D	AWPI	GSO Faculty	GSO	FIELD STUDIES OF WHALES	\$32,078.00	100.00	\$32,078.00
Kincaid, Christopher R	AWPI	GSO Faculty	GSO	3D DYNAMICS OF BUOYANT	\$145,000.00	90.00	\$130,500.00
King, John W	WCPI	GSO Faculty	GSO	DEVELMNT OF A BIOGEOCHEMICAL PROXY	\$44,937.00	5.00	\$2,246.85
King, John W	WCPI	GSO Faculty	GSO	SUBMARINE LANDSLIDES OF THE US ATLANTIC CONTINENTAL	\$2,379.25	50.00	\$1,189.62
King, John W	AWPI	GSO Faculty	GSO	Post Hurricane Sandy Submerged Marine Habitat	\$385,000.00	100.00	\$385,000.00
King, John W	PI	GSO Faculty	GSO	A 650,000 YEAR RECORD	\$33,003.00	100.00	\$33,003.00
Lohmann, Rainer	PI	GSO Faculty	GSO	ANALYSIS OF FUR SEAL MILK	\$21,840.00	100.00	\$21,840.00
Lohmann, Rainer	AWPI	GSO Faculty	GSO	ENHANCING IADN WITH PASSIVE SAMPLING TO ASSESS THE	\$176,514.00	100.00	\$176,514.00
Loose, Brice	AWPI	GSO Faculty	GSO	NOBLE GASES AND HELIUM	\$385,279.00	100.00	\$385,279.00
Luo, Yiyong	AWPI	GSO Faculty	GSO	THE ROLES OF THE OCEAN DYNAMICAL	\$96,186.00	95.00	\$91,376.70
Maranda, Lucie	AWPI	GSO Faculty	GSO	SUPPORT SERVICES FOR SAMPLING	\$553.43	100.00	\$553.43
Menden-Deuer, Susanne	WCPI	GSO Faculty	GSO	THE IMPACTS OF CLIMATE CHANGE	\$160,402.00	50.00	\$80,201.00
Moran, S Bradley	AWPI	GSO Faculty	GSO	IPA POSITION AT NSF CHEMICAL OCEANOGRAPHY	\$103,178.00	100.00	\$103,178.00
Murray, Cynthia J	AWPI	GSO Faculty	GSO	A PROPOSAL FOR THE SUPPORT	\$117,498.00	100.00	\$117,498.00
Murray, Cynthia J	AWPI	GSO Faculty	GSO	A PROPOSAL FOR THE SUPPORT	\$25,555.00	100.00	\$25,555.00
Oviatt, Candace A	WCPI	GSO Faculty	GSO	CI- CHRP: OBSERVATIONS AND MODELING OF NARRAGANSETT	\$172,503.00	33.00	\$56,925.99
Oviatt, Candace A	AWPI	GSO Faculty	GSO	Technical Support of the Fixed-Site Monitoring Network	\$479,270.00	100.00	\$479,270.00
Oviatt, Candace A	WCPI	GSO Faculty	GSO	CI- CHRP: OBSERVATIONS AND MODELING OF NARRAGANSETT	\$226,022.00	33.00	\$74,587.26
Pockalny, Robert A	AWPI	GSO Faculty	GSO	EARTHCUBE RCN:	\$74,813.00	95.00	\$71,072.35
Pockalny, Robert A	AWPI	GSO Faculty	GSO	SYNTHESIS OF LINE ISLANDS GEOLOGIC	\$37,973.00	100.00	\$37,973.00
Pockalny, Robert A	WCPI	GSO Faculty	GSO	North Atlantic Meridional Circulation During the Last...	\$299,746.00	33.00	\$98,916.18
Pratt, Sheldon D	AWPI	GSO Faculty	GSO	CI- MACROBENTHIC FAUNAL	\$11,048.70	100.00	\$11,048.70
Roman, Christopher N	PI	GSO Faculty	GSO	CI- DEVELOPMENT OF A DUAL STAGE	\$14,999.00	100.00	\$14,999.00
Roman, Christopher N	WCPI	GSO Faculty	GSO	THE DEVELOPMENT OF ADVANCED	\$188,267.00	80.00	\$150,613.60
Rossby, Hans T	AWPI	GSO Faculty	GSO	THE NORRONA PROJECT	\$123,136.00	100.00	\$123,136.00
Rothstein, Lewis	WCPI	GSO Faculty	GSO	THE ROLES OF THE OCEAN DYNAMICAL	\$96,186.00	5.00	\$4,809.30
Rothstein, Lewis	AWPI	GSO Faculty	GSO	THE IMPACTS OF CLIMATE CHANGE	\$160,402.00	50.00	\$80,201.00
Rynearson, Tatiana A	AWPI	GSO Faculty	GSO	CI- ECOLOGY AT THE MICROBIAL	\$102,899.00	100.00	\$102,899.00
Scowcroft, Gail A	PI	GSO Faculty	GSO	DISCOVERY OF SOUND IN THE SEA	\$40,178.00	100.00	\$40,178.00
Scowcroft, Gail A	PI	GSO Faculty	GSO	DISCOVERY OF SOUND IN THE SEA	\$41,489.00	100.00	\$41,489.00
Scowcroft, Gail A	PI	GSO Faculty	GSO	DISCOVERY OF SOUND IN THE SEA	\$162,329.00	100.00	\$162,329.00
Shen, Yang	AWPI	GSO Faculty	GSO	UNIFIED 3D VELOCITY AND ATTENUATION	\$987,046.00	100.00	\$987,046.00

Shen,Yang	PI	GSO Faculty	GSO	CONSTRUCTION OF A NESTED, GLOBAL	\$25,000.00	90.00	\$22,500.00
Shen,Yang	WCPI	GSO Faculty	GSO	INVESTIGATION OF CAUSES AND EFFECTS	\$10,000.00	5.00	\$500.00
Shen,Yang	WCPI	GSO Faculty	GSO	STATIC AND DYNAMIC TRIGGERING OF	\$28,838.00	5.00	\$1,441.90
Shen,Yang	WCPI	GSO Faculty	GSO	INVESTIGATION OF CAUSES AND EFFECTS	\$10,000.00	5.00	\$500.00
Shen,Yang	WCPI	GSO Faculty	GSO	STATIC AND DYNAMIC TRIGGERING OF	\$28,838.00	5.00	\$1,441.90
Spivack,Arthur J	AWPI	GSO Faculty	GSO	North Atlantic Meridional Circulation During the Last...	\$299,746.00	34.00	\$101,913.64
Ullman,David S	AWPI	GSO Faculty	GSO	EVALUATION OF THE ADEQUACY	\$35,500.00	100.00	\$35,500.00
Ullman,David S	AWPI	GSO Faculty	GSO	MARACOOS: Mid Atlantic Regional Assoc Coastal Ocean	\$29,990.00	100.00	\$29,990.00
Ullman,David S	WCPI	GSO Faculty	GSO	CI- CHRP: OBSERVATIONS AND MODELING OF NARRAGANSETT	\$172,503.00	33.00	\$56,925.99
Ullman,David S	AWPI	GSO Faculty	GSO	REPAIR AND HARDENING OF MILD ATLANTIC	\$203,170.00	100.00	\$203,170.00
Ullman,David S	WCPI	GSO Faculty	GSO	CI- CHRP: OBSERVATIONS AND MODELING OF NARRAGANSETT	\$226,022.00	33.00	\$74,587.26
Watts,D Randolph	AWPI	GSO Faculty	GSO	NORTH EQUATORIAL 3 PIES	\$4,800.00	100.00	\$4,800.00
Watts,D Randolph	AWPI	GSO Faculty	GSO	COASTAL PRESSURE RECORDERS IN 2 MODEM PIES	\$84,117.00	100.00	\$84,117.00
Watts,D Randolph	AWPI	GSO Faculty	GSO	REPLACEMENT ELECTRONICS FOR PIES 6.2B	\$9,689.00	100.00	\$9,689.00
Watts,D Randolph	AWPI	GSO Faculty	GSO	PIES AND POPUPS FOR M ANDRES	\$50,417.00	100.00	\$50,417.00
Watts,D Randolph	AWPI	GSO Faculty	GSO	MEASURING THE VARIABILITY	\$45,455.00	100.00	\$45,455.00
Watts,D Randolph	AWPI	GSO Faculty	GSO	Cross-Frontal Fluxes in the Antarctic Circumpolar	\$895,357.00	67.00	\$599,889.19
Watts,D Randolph	AWPI	GSO Faculty	GSO	MEASURING THE VARIABILITY	\$1,597.81	100.00	\$1,597.81
Wei,Meng	AWPI	GSO Faculty	GSO	INVESTIGATION OF CAUSES AND EFFECTS	\$10,000.00	95.00	\$9,500.00
Wei,Meng	AWPI	GSO Faculty	GSO	STATIC AND DYNAMIC TRIGGERING OF	\$28,838.00	95.00	\$27,396.10
Wei,Meng	AWPI	GSO Faculty	GSO	INVESTIGATION OF CAUSES AND EFFECTS	\$10,000.00	95.00	\$9,500.00
Wei,Meng	AWPI	GSO Faculty	GSO	STATIC AND DYNAMIC TRIGGERING OF	\$28,838.00	95.00	\$27,396.10
Ballard,Robert D	AWPI	GSO Marine Archaeology	GSO	RESEARCH ABOARD E/V NAUTILUS	\$163,155.00	100.00	\$163,155.00
Ballard,Robert D	AWPI	GSO Marine Archaeology	GSO	THE DEVELOPMENT OF ADVANCED	\$188,267.00	20.00	\$37,653.40
Glennon,Thomas J	WCPI	GSO Marine Office	GSO	SHIPTIME & MARINE 2012	\$381,577.00	50.00	\$190,788.50
Glennon,Thomas J	WCPI	GSO Marine Office	GSO	TECH SERVICES R/V ENDEAVOR 2012	\$120,976.00	50.00	\$60,488.00
Glennon,Thomas J	AWPI	GSO Marine Office	GSO	MOSA for OCE 1217446 2012-2017	\$5,175.00	100.00	\$5,175.00
Glennon,Thomas J	AWPI	GSO Marine Office	GSO	MOSA for OCE 1217446 2012-2017	\$29,325.00	100.00	\$29,325.00
Glennon,Thomas J	AWPI	GSO Marine Office	GSO	MOSA for OCE 1217446 2012-2017	\$6,900.00	100.00	\$6,900.00
Glennon,Thomas J	AWPI	GSO Marine Office	GSO	MOSA for OCE 1217446 2012-2017	\$25,875.00	100.00	\$25,875.00
Glennon,Thomas J	AWPI	GSO Marine Office	GSO	MOSA for OCE 1217446 2012-2017	\$10,350.00	100.00	\$10,350.00
Glennon,Thomas J	AWPI	GSO Marine Office	GSO	Ship Operations 2012 - 2017	\$541,404.00	100.00	\$541,404.00
Glennon,Thomas J	AWPI	GSO Marine Office	GSO	CY 2014 NASA/ OSU RESEARCH CRUISE /ENDEAVOR	\$445,998.00	100.00	\$445,998.00
Glennon,Thomas J	AWPI	GSO Marine Office	GSO	MOSA for OCE 1217446 2012-2017	\$46,575.00	100.00	\$46,575.00
Glennon,Thomas J	AWPI	GSO Marine Office	GSO	MOSA for OCE 1217446 2012-2017	\$48,300.00	100.00	\$48,300.00
Glennon,Thomas J	AWPI	GSO Marine Office	GSO	MOSA for OCE 1217446 2012-2017	\$12,075.00	100.00	\$12,075.00
Glennon,Thomas J	AWPI	GSO Marine Office	GSO	MOSA for OCE 1217446 2012-2017	\$10,350.00	100.00	\$10,350.00
Glennon,Thomas J	WCPI	GSO Marine Office	GSO	SHIPTIME & MARINE 2012	\$99,655.00	50.00	\$49,827.50
Glennon,Thomas J	AWPI	GSO Marine Office	GSO	MOSA for OCE 1217446 2012-2017	\$8,625.00	100.00	\$8,625.00
Glennon,Thomas J	WCPI	GSO Marine Office	GSO	TECH SERVICES R/V ENDEAVOR 2012	\$325,870.00	50.00	\$162,935.00
Glennon,Thomas J	AWPI	GSO Marine Office	GSO	MOSA for OCE 1217446 2012-2017	\$28,815.00	100.00	\$28,815.00
Glennon,Thomas J	AWPI	GSO Marine Office	GSO	MOSA for OCE 1217446 2012-2017	\$49,355.00	100.00	\$49,355.00
Fanning III,William L	AWPI	GSO Marine Technicians	GSO	SHIPTIME & MARINE 2012	\$381,577.00	50.00	\$190,788.50
Fanning III,William L	AWPI	GSO Marine Technicians	GSO	TECH SERVICES R/V ENDEAVOR 2012	\$120,976.00	50.00	\$60,488.00
Fanning III,William L	AWPI	GSO Marine Technicians	GSO	SHIPTIME & MARINE 2012	\$99,655.00	50.00	\$49,827.50
Fanning III,William L	AWPI	GSO Marine Technicians	GSO	TECH SERVICES R/V ENDEAVOR 2012	\$325,870.00	50.00	\$162,935.00
Hickox,Sara C	AWPI	GSO Office of Marine Program	GSO	DEEP CARBON OBSERVATORY	\$650,082.00	100.00	\$650,082.00
Menezes,Sunshine	WCPI	GSO Office of Marine Program	GSO	The Science & Technology of Dispersants as Relevant to	\$60,656.00	12.00	\$7,278.72
Scowcroft,Gail A	AWPI	GSO Office of Marine Program	GSO	CCEPA	\$29,177.00	100.00	\$29,177.00
Scowcroft,Gail A	AWPI	GSO Office of Marine Program	GSO	MARINE TECH FOR TEACHERS AND STUDENTS	\$791,574.00	80.00	\$633,259.20
Scowcroft,Gail A	AWPI	GSO Office of Marine Program	GSO	DISCOVERY OF SOUND	\$25,000.00	100.00	\$25,000.00
Ullman,David S	WCPI	GSO Research	GSO	COEUT: PARS BUOY	\$19,665.56	30.00	\$5,899.66
Desbonnet,Alan	AWPI	GSO Rhode Island Sea Grant	GSO	KNAUSS FELLOW KERRY WHITTAKER	\$28,250.00	100.00	\$28,250.00
Desbonnet,Alan	AWPI	GSO Rhode Island Sea Grant	GSO	KNAUSS FELLOW LEIGH HABEGGER	\$28,250.00	100.00	\$28,250.00
Desbonnet,Alan	AWPI	GSO Rhode Island Sea Grant	GSO	2014 KNAUSS FELLOW BRANDON ELSNER	\$28,250.00	100.00	\$28,250.00

Desbonnet,Alan	AWPI	GSO Rhode Island Sea Grant	GSO	KNAUSS FELLOW LEIGH HABEGGER	\$28,250.00	100.00	\$28,250.00
Desbonnet,Alan	AWPI	GSO Rhode Island Sea Grant	GSO	KNAUSS FELLOW KERRY WHITTAKER	\$28,250.00	100.00	\$28,250.00
Desbonnet,Alan	AWPI	GSO Rhode Island Sea Grant	GSO	2014 KNAUSS FELLOW BRANDON ELSNER	\$28,250.00	100.00	\$28,250.00
Nixon,Dennis W	AWPI	GSO Rhode Island Sea Grant	GSO	RHODE ISLAND SEA GRANT 2014-2018	\$1,386,003.00	100.00	\$1,386,003.00

**COLLEGE TOTAL**

**\$19,225,811.31**

**COLLEGE OF HUMAN SCIENCE AND SERVICES**

Mathews,Deborah L	PI	Center for Human Services	HSS	RI DCYF training and consult initiative	\$237,500.00	100.00	\$237,500.00
Mathews,Deborah L	AWPI	Center for Human Services	HSS	IMS all access national leadership grant	\$49,802.00	100.00	\$49,802.00
Cicomascolo,Lori E	AWPI	Dean Human Science And Ser	HSS	RI Developmental Disabilities Council	\$60,917.00	100.00	\$60,917.00
Cicomascolo,Lori E	AWPI	Dean Human Science And Ser	HSS	Rhode Island Developmental Disabilities Council 2014	\$132,722.00	100.00	\$132,722.00
Cicomascolo,Lori E	AWPI	Dean Human Science And Ser	HSS	RI Developmental Disabilities Council	\$157,728.00	100.00	\$157,728.00
Mathews,Deborah L	AWPI	Dean Human Science And Ser	HSS	RI DHS Training & Consult Initiative	\$237,256.00	100.00	\$237,256.00
Gomez-Chiarri,Marta	AWPI	Fish-Animal-Vet-Science	HSS	improving shellfish survival through genetic improv	\$40,896.00	100.00	\$40,896.00
Clark,Phillip G	WCPI	Gerontology	HSS	Health Care innovation challenge	\$1,352,265.00	10.00	\$135,226.50
Clark,Phillip G	AWPI	Gerontology	HSS	GERTRC EDUC CNTRS	\$424,546.00	30.00	\$127,363.80
Clark,Phillip G	AWPI	Gerontology	HSS	GERTRC EDUC CNTRS	\$46,854.00	30.00	\$14,056.20
Dice,Jaime L	AWPI	Human Development & Family	HSS	RIDE Alignment	\$25,000.00	100.00	\$25,000.00
Mccurdy,Karen P	PI	Human Development & Family	HSS	Recruitment & Retention of Early Childhood Professionals	\$91,886.00	100.00	\$91,886.00
Warford,Susan	AWPI	Kingston Child Development C	HSS	RHODE ISLAND RACE TO THE TOP EARLY LEARNING...	\$7,162.95	100.00	\$7,162.95
Hulme,Janice B	AWPI	Physical Therapy	HSS	URI/Bodah coll agreement for RICLAS physical therapy ser	\$341,442.00	100.00	\$341,442.00
Byrd,David M	WCPI	School of Education	HSS	URI Robert Noyce teacher scholarship program	\$1,194,051.00	10.00	\$119,405.10
Byrd,David M	PI	School of Education	HSS	Jumpstart URI 13/14	\$99,731.00	100.00	\$99,731.00
Coiro,Julie L	AWPI	School of Education	HSS	Digital Scaffolds for Synthesizing Online Texts	\$8,000.00	100.00	\$8,000.00
De Groot,Cornelis	WCPI	School of Education	HSS	URI Robert Noyce teacher scholarship program	\$1,194,051.00	10.00	\$119,405.10
Fogleman Jr,Jay A	WCPI	School of Education	HSS	URI Robert Noyce teacher scholarship program	\$1,194,051.00	10.00	\$119,405.10
Peno,Kathleen A	WCPI	School of Education	HSS	URI Robert Noyce teacher scholarship program	\$1,194,051.00	10.00	\$119,405.10
Seitsinger,Anne	AWPI	School of Education	HSS	URI Robert Noyce teacher scholarship program	\$1,194,051.00	50.00	\$597,025.50
Young, Betty	AWPI	School of Education	HSS	Guiding Education in Math and Science Network- GEMS-NET	\$370,492.04	100.00	\$370,492.04
Lu,Sheng	AWPI	Textiles,Fashion Merchandisin	HSS	Promote US cotton in the 21st century global apparel val	\$36,999.00	100.00	\$36,999.00

**COLLEGE TOTAL**

**\$3,248,826.39**

**COLLEGE OF NURSING**

Burbank,Patricia M	AWPI	Nursing Instruction	NUR	ADVANCED NURSING EDUCATION GRANTS	\$249,868.00	100.00	\$249,868.00
Burbank,Patricia M	WCPI	Nursing Instruction	NUR	GERTRC EDUC CNTRS	\$424,546.00	10.00	\$42,454.60
Burbank,Patricia M	WCPI	Nursing Instruction	NUR	GERTRC EDUC CNTRS	\$46,854.00	10.00	\$4,685.40
Curtin,Alicia J	WCPI	Nursing Instruction	NUR	GERTRC EDUC CNTRS	\$424,546.00	10.00	\$42,454.60
Curtin,Alicia J	WCPI	Nursing Instruction	NUR	GERTRC EDUC CNTRS	\$46,854.00	10.00	\$4,685.40
Erickson-Owens,Debra Ann	WCPI	Nursing Instruction	NUR	Effects of placental transfusion on early brain develop	\$468,100.00	50.00	\$234,050.00
Erickson-Owens,Debra Ann	WCPI	Nursing Instruction	NUR	Effects of placental transfusion on early brain develop	\$37,447.00	50.00	\$18,723.50
Martin,Diane C	WCPI	Nursing Instruction	NUR	GERTRC EDUC CNTRS	\$424,546.00	10.00	\$42,454.60
Martin,Diane C	WCPI	Nursing Instruction	NUR	GERTRC EDUC CNTRS	\$46,854.00	10.00	\$4,685.40
Mercer,Judith S	AWPI	Nursing Instruction	NUR	Effects of placental transfusion on early brain develop	\$468,100.00	50.00	\$234,050.00
Mercer,Judith S	AWPI	Nursing Instruction	NUR	Effects of placental transfusion on early brain develop	\$37,447.00	50.00	\$18,723.50
Sullivan,Mary C	AWPI	Nursing Instruction	NUR	Advance education nursing traineeship at URI	\$343,109.00	100.00	\$343,109.00
Sullivan,Mary C	AWPI	Nursing Instruction	NUR	Southern Rhode Island area health education center	\$68,570.00	20.00	\$13,714.00
Walters,Delores M	WCPI	Nursing Instruction	NUR	Southern Rhode Island area health education center	\$68,570.00	80.00	\$54,856.00

**COLLEGE TOTAL**

**\$1,308,514.00**

**COLLEGE OF PHARMACY**

Deng,Ruitang	AWPI	Biomedical & Pharm. Sciences PHA		CRSSTLK BET ESTRGN AND BILE ACID SGNL PATHWY	\$275,476.00	100.00	\$275,476.00
Lu,Wei	AWPI	Biomedical & Pharm. Sciences PHA		Biodegradable hollow CUS nanoparticles for photothermal	\$315,284.00	100.00	\$315,284.00
Lu,Wei	AWPI	Biomedical & Pharm. Sciences PHA		A chemo_Chrysotherapy for Rheumatoid Arthritis	\$10,000.00	100.00	\$10,000.00
Rowley,David C	AWPI	Biomedical & Pharm. Sciences PHA		New tools to prevent bacterial diseases in shellfish hat	\$136,099.00	100.00	\$136,099.00
Rowley,David C	WCPI	Biomedical & Pharm. Sciences PHA		MOLECULAR BASIS FOR PATHOGENESIS	\$50,000.00	50.00	\$25,000.00
Seeram,Navindra P	AWPI	Biomedical & Pharm. Sciences PHA		Routine analyses of samples to identify factors which	\$80,730.00	100.00	\$80,730.00
Slitt,Angela L	AWPI	Biomedical & Pharm. Sciences PHA		Evaluation of Quinones and Rhein in Diet-Induced Obesity	\$18,308.00	100.00	\$18,308.00
Slitt,Angela L	AWPI	Biomedical & Pharm. Sciences PHA		Maintenance of Mouse Nr2 and Keap1 Breeding...	\$4,771.00	100.00	\$4,771.00
Yan,Bingfang	AWPI	Biomedical & Pharm. Sciences PHA		Interplay between metabolism and FXR activation in scopa	\$437,475.00	100.00	\$437,475.00
Zawia,Nasser H	AWPI	Biomedical & Pharm. Sciences PHA		A novel therapeutic approach to lowering Tau and its imp	\$184,691.00	100.00	\$184,691.00
Hilliard,Dennis C	AWPI	Crime Lab	PHA	2013 Byrne-JAG firearms/NIBIN/latent prints	\$20,000.00	100.00	\$20,000.00
Hilliard,Dennis C	AWPI	Crime Lab	PHA	Coverdell Laboratory improvement FY2013	\$13,092.00	100.00	\$13,092.00
King,John W	WCPI	GSO Faculty	PHA	CI-Phase 5:Fine grid coastal modeling of relevant tsunam	\$75,214.00	30.00	\$22,564.20
Goldstein,Elaina K	AWPI	Living Rite/Health Policy	PHA	Health Care innovation challenge	\$1,352,265.00	60.00	\$811,359.00
Estus,Erica L	WCPI	Pharmacy Practice	PHA	GERTRC EDUC CNTRS	\$424,546.00	10.00	\$42,454.60
Estus,Erica L	WCPI	Pharmacy Practice	PHA	GERTRC EDUC CNTRS	\$46,854.00	10.00	\$4,685.40
Hume,Anne L	WCPI	Pharmacy Practice	PHA	GERTRC EDUC CNTRS	\$424,546.00	10.00	\$42,454.60
Hume,Anne L	WCPI	Pharmacy Practice	PHA	GERTRC EDUC CNTRS	\$46,854.00	10.00	\$4,685.40
Kogut,Stephen J	WCPI	Pharmacy Practice	PHA	Health Care innovation challenge	\$1,352,265.00	10.00	\$135,226.50
Kogut,Stephen J	AWPI	Pharmacy Practice	PHA	RI Dept of Health Board of Pharmacy support	\$19,024.00	100.00	\$19,024.00
Larrat,E Paul	WCPI	Pharmacy Practice	PHA	Health Care innovation challenge	\$1,352,265.00	10.00	\$135,226.50
Larrat,E Paul	AWPI	Pharmacy Practice	PHA	RIDOC pharmacy program oversight 1/1/13-12/31/16	\$110,095.00	50.00	\$55,047.50
Marcoux,Rita M	WCPI	Pharmacy Practice	PHA	RIDOC pharmacy program oversight 1/1/13-12/31/16	\$110,095.00	50.00	\$55,047.50
Owens,Norma J	WCPI	Pharmacy Practice	PHA	GERTRC EDUC CNTRS	\$424,546.00	10.00	\$42,454.60
Owens,Norma J	WCPI	Pharmacy Practice	PHA	GERTRC EDUC CNTRS	\$46,854.00	10.00	\$4,685.40
Temkin,Cynthia W	WCPI	Pharmacy Practice	PHA	GERTRC EDUC CNTRS	\$424,546.00	10.00	\$42,454.60
Temkin,Cynthia W	WCPI	Pharmacy Practice	PHA	GERTRC EDUC CNTRS	\$46,854.00	10.00	\$4,685.40

**COLLEGE TOTAL**

**\$2,942,981.20**

**PROVOST**

Dehayes,Donald H	AWPI	Provost Academic Affairs	PRO	Recruit and educate local at-risk adults and youth (RELA	\$665,229.00	10.00	\$66,522.90
------------------	------	--------------------------	-----	--	--------------	-------	-------------

**COLLEGE TOTAL**

**\$66,522.90**

**UNIVERSITY COLLEGE**

Hayes,David B	WCPI	Learning Assistance Center	UCL	Recruit and educate local at-risk adults and youth (RELA	\$665,229.00	30.00	\$199,568.70
---------------	------	----------------------------	-----	--	--------------	-------	--------------

**COLLEGE TOTAL**

**\$199,568.70**

**VICE PRESIDENT FOR ADMINISTRATION**

Rosen,Deborah E	AWPI	Transportation Center	VPB	Round II RIDOT/URITC JOINT RESEARCH PROGRAM	\$22,070.00	100.00	\$22,070.00
Rosen,Deborah E	AWPI	Transportation Center	VPB	Transportation Center local technical assistance and out	\$12,196.37	100.00	\$12,196.37
Rosen,Deborah E	AWPI	Transportation Center	VPB	Transportation Center local technical assistance and out	\$218,785.00	100.00	\$218,785.00
Rosen,Deborah E	AWPI	Transportation Center	VPB	URITC Joint Research Round IV 2014	\$70,740.00	100.00	\$70,740.00
Rosen,Deborah E	AWPI	Transportation Center	VPB	URITC/LTAP 2014	\$610,467.00	100.00	\$610,467.00

**COLLEGE TOTAL**

**\$934,258.37**

**VICE PRESIDENT FOR RESEARCH & ECONOMIC DEVELOPMENT**

Alfonso, Peter	AWPI	Research	VPR	Infrastructure to advance life sciences in the ocean sta	\$4,000,000.00	100.00	\$4,000,000.00
Sonnenfeld, Gerald	AWPI	Research	VPR	Journal of Interferon and Cytokine research editorial ac	\$2,560.54	100.00	\$2,560.54
Sonnenfeld, Gerald	AWPI	Research	VPR	Influence active hexose correlated compound (AHCC) suppl	\$2,875.00	100.00	\$2,875.00
Petell, James K	AWPI	Small Business Development	VPR	RI Small Business Develop Centers	\$172,400.00	100.00	\$172,400.00

**COLLEGE TOTAL**

**\$4,177,835.54**

**VICE PRESIDENT, STUDENT AFFAIRS**

Williams, Gerald R	WCPI	Special Progr-Talent Dev.	VPS	Recruit and educate local at-risk adults and youth (RELA	\$665,229.00	30.00	\$199,568.70
Feeley, Lacey M	PI	Vice President-Student Affairs	VPS	The SMILE program watershed monitoring and stewardship p	\$61,523.00	100.00	\$61,523.00

**COLLEGE TOTAL**

**\$261,091.70**

**TOTAL OVERALL AWARDS**

**\$54,413,226.76**