

University of Rhode Island

DigitalCommons@URI

Reports (Research and Economic Development)

Division of Research and Economic
Development

2014

Division of Research and Economic Development Monthly Report for January 2014

URI Division of Research and Economic Development

Follow this and additional works at: https://digitalcommons.uri.edu/researchecondev_reports

Recommended Citation

URI Division of Research and Economic Development, "Division of Research and Economic Development Monthly Report for January 2014" (2014). *Reports (Research and Economic Development)*. Paper 67.
https://digitalcommons.uri.edu/researchecondev_reports/67

This Periodical is brought to you by the University of Rhode Island. It has been accepted for inclusion in Reports (Research and Economic Development) by an authorized administrator of DigitalCommons@URI. For more information, please contact digitalcommons-group@uri.edu. For permission to reuse copyrighted content, contact the author directly.

Table 1. Awards processed by the Office of Sponsored Projects Review FY10 through January FY14 YTD

	FY10				FY11			
	Number		Amount Awarded		Number		Amount Awarded	
Month	Count	Cum. Ct.	Amount	Cum. Amt.	Count	Cum. Ct.	Amount	Cum. Amt.
July	28	28	\$8,427,538.60	\$8,427,538.60	39	39	\$10,965,465.50	\$10,965,465.50
August	43	71	\$14,167,899.21	\$22,595,437.81	33	72	\$15,250,958.36	\$26,216,423.86
September	70	141	\$12,469,481.84	\$35,064,919.65	60	132	\$5,472,552.34	\$31,688,976.20
October	46	187	\$7,664,128.20	\$42,729,047.85	49	181	\$5,666,653.80	\$37,355,630.00
November	26	213	\$2,647,733.00	\$45,376,780.85	18	199	\$3,988,117.24	\$41,343,747.24
December	30	243	\$4,769,306.73	\$50,146,087.58	25	224	\$5,631,904.26	\$46,975,651.50
January	29	272	\$4,596,231.77	\$54,742,319.35	33	257	\$4,417,243.69	\$51,392,895.19
February	36	308	\$8,022,999.41	\$62,765,318.76	34	291	\$6,955,551.25	\$58,348,446.44
March	27	335	\$3,315,500.05	\$66,080,818.81	28	319	\$4,405,035.94	\$62,753,482.38
April	47	382	\$16,843,832.59	\$82,924,651.40	45	364	\$7,439,520.72	\$70,193,003.10
May	30	412	\$10,443,425.00	\$93,368,076.40	44	408	\$10,694,786.50	\$80,887,789.60
June	48	460	\$8,138,037.00	\$101,506,113.40	44	452	\$11,767,652.47	\$92,655,442.07
Total	460	460	\$101,506,113.40	\$101,506,113.40	452	452	\$92,655,442.07	\$92,655,442.07

	FY12				FY13				FY14			
	Number		Amount Awarded		Number		Amount Awarded		Number		Amount Awarded	
Month	Count	Cum. Ct.	Amount	Cum. Amt.	Count	Cum. Ct.	Amount	Cum. Amt.	Count	Cum. Ct.	Amount	Cum. Amt.
July	35	35	\$3,995,132.47	\$3,995,132.47	18	18	\$2,130,245.92	\$2,130,245.92	33	33	\$3,624,305.95	\$3,624,305.95
August	53	88	\$16,018,070.93	\$20,013,203.40	51	69	\$13,973,655.37	\$16,103,901.29	38	71	\$7,881,694.50	\$11,506,000.45
September	51	139	\$7,524,251.09	\$27,537,454.49	27	96	\$3,729,908.56	\$19,833,809.85	29	100	\$10,524,019.00	\$22,030,019.45
October	27	166	\$2,640,230.72	\$30,177,685.21	39	135	\$6,553,741.92	\$26,387,551.77	24	124	\$2,456,452.98	\$24,486,472.43
November	18	184	\$2,118,331.08	\$32,296,016.29	24	159	\$3,306,500.92	\$29,694,052.69	12	136	\$2,400,305.36	\$26,886,777.79
December	26	210	\$7,124,885.17	\$39,420,901.46	18	177	\$2,790,458.11	\$32,484,510.80	17	153	\$1,487,582.37	\$28,374,360.16
January	30	240	\$5,494,105.33	\$44,915,006.79	36	213	\$4,699,661.52	\$37,184,172.32	20	173	\$1,867,543.00	\$30,241,903.16
February	39	279	\$4,939,567.93	\$49,854,574.72	43	256	\$6,131,201.28	\$43,315,373.60				
March	44	323	\$9,496,521.94	\$59,351,096.66	36	292	\$6,280,723.57	\$49,596,097.17				
April	44	367	\$5,791,581.04	\$65,142,677.70	22	314	\$1,799,922.54	\$51,396,019.71				
May	36	403	\$8,649,283.33	\$73,791,961.03	30	344	\$5,597,725.78	\$56,993,745.49				
June	71	474	\$21,212,788.30	\$95,004,749.33	50	394	\$19,534,036.04	\$76,527,781.53				
Total	474	474	\$95,004,749.33	\$95,004,749.33	394	394	\$76,527,781.53	\$76,527,781.53	173	173	\$30,241,903.16	\$30,241,903.16

Figure 1a. Cumulative totals of numbers of awards received FY10 through January FY14 YTD

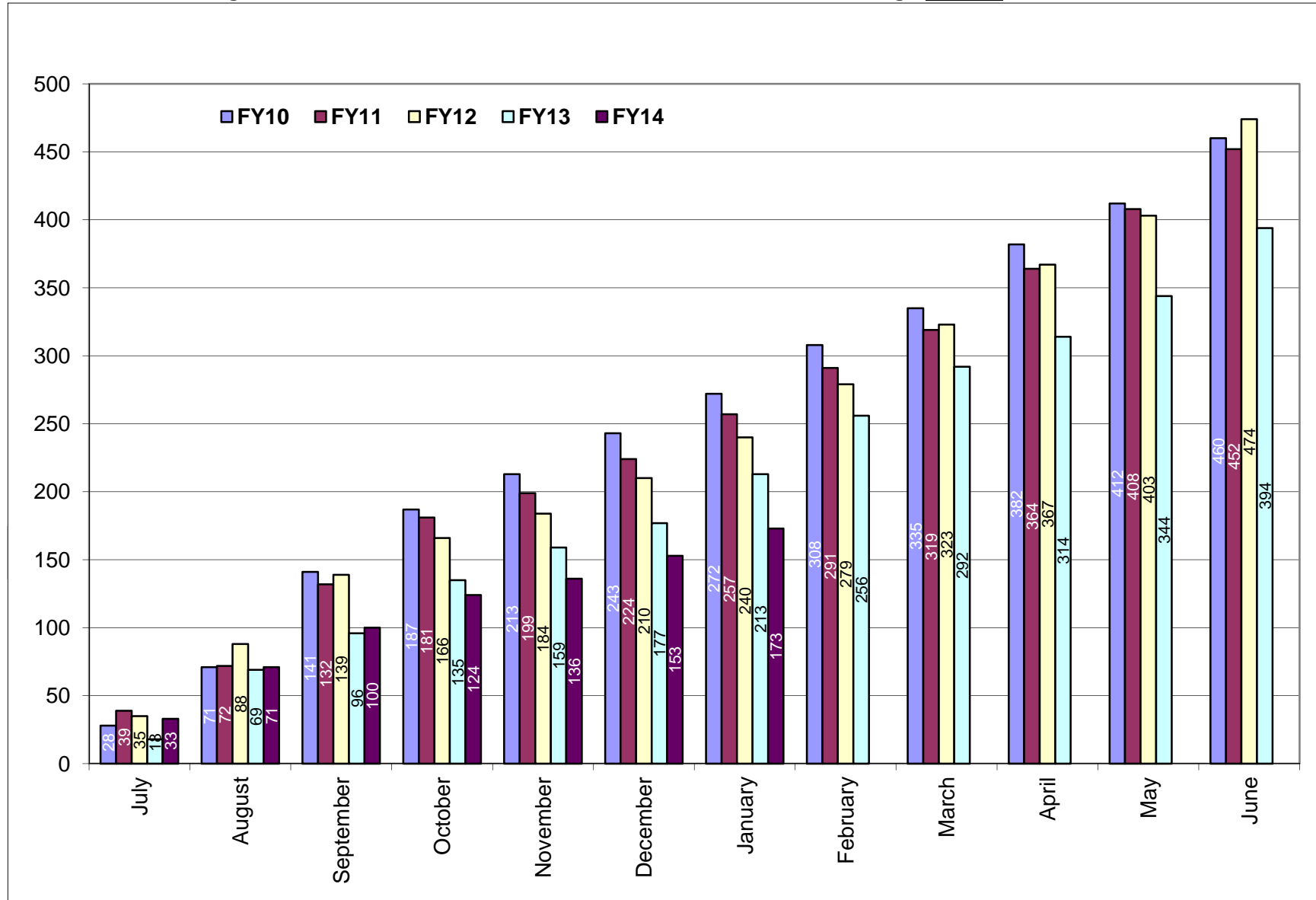


Figure 1b. Cumulative totals of award amounts received FY10 through January FY14 YTD

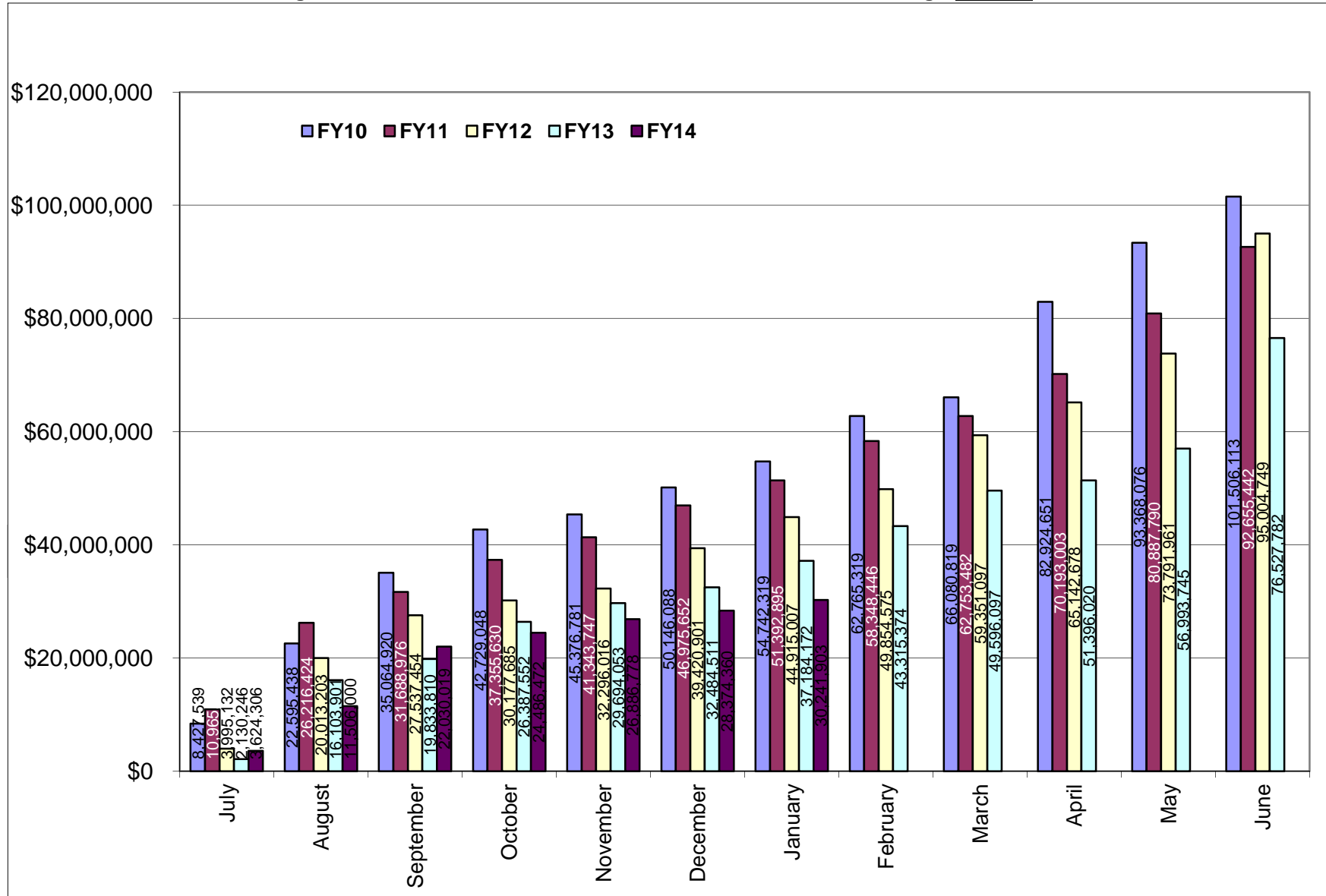


Table 2. Summary of awards received by administrative and academic units FY10 through January FY14 YTD

Administrative	<u>FY10</u>	<u>FY11</u>	<u>FY12</u>	<u>FY13</u>	<u>FY14 YTD</u>	<u>Totals</u>
PRESIDENT'S OFFICE	\$0.00	\$2,900.00	\$0.00	\$0.00	\$0.00	\$2,900.00
PROVOST	\$1,306,675.00	\$84,642.45	\$458,078.10	\$11,025.46	\$66,522.90	\$1,926,943.91
VP, ADMINISTRATION	\$13,879,383.50	\$2,093,977.64	\$1,847,788.00	\$486,099.64	\$77,665.57	\$18,384,914.35
VP, RESEARCH & ECON DEV	\$2,512,500.00	\$8,072,900.00	\$0.00	\$6,000,000.00	\$4,000,000.00	\$20,585,400.00
VP, STUDENT AFFAIRS	\$151,422.90	\$26,994.82	\$239,999.40	\$0.00	\$261,091.70	\$679,508.82
Academic						
ARTS & SCIENCES	\$9,737,385.85	\$14,719,616.34	\$13,506,337.60	\$10,217,827.48	\$3,392,008.89	\$51,573,176.16
BUSINESS ADMINISTRATION	\$43,901.60	\$108,472.45	\$26,200.00	\$30,264.83	\$12,296.44	\$221,135.32
CONTINUING EDUCATION	\$0.00	\$0.00	\$239,999.40	\$0.00	\$199,568.70	\$439,568.10
ENGINEERING	\$8,643,672.05	\$7,308,043.58	\$6,004,532.53	\$5,160,510.74	\$1,943,028.84	\$29,059,787.74
ENVIRONMENT & LIFE SCIENCES	\$16,232,137.30	\$21,932,032.49	\$26,590,123.59	\$18,531,363.71	\$8,723,523.91	\$92,009,181.00
GRADUATE SCHOOL	\$51,366.00	\$133,960.00	\$0.00	\$922.00	\$0.00	\$186,248.00
HUMAN SCIENCE & SERVICES	\$2,970,596.81	\$2,754,906.50	\$3,316,524.30	\$860,634.00	\$2,498,641.40	\$12,401,303.01
NURSING	\$2,206,995.80	\$682,049.15	\$1,996,376.45	\$1,038,977.00	\$879,779.00	\$6,804,177.40
OCEANOGRAPHY	\$32,473,931.12	\$25,768,864.02	\$29,987,097.20	\$28,261,624.70	\$5,861,151.71	\$122,352,668.75
PHARMACY	\$11,195,695.47	\$8,875,242.63	\$10,456,774.36	\$5,928,531.97	\$2,127,055.40	\$38,583,299.83
UNIVERSITY COLLEGE	\$96,550.00	\$90,840.00	\$334,918.40	\$0.00	\$199,568.70	\$721,877.10
UNIVERSITY LIBRARY	\$3,900.00	NA	NA	NA	NA	\$3,900.00
Totals	\$101,506,113.40	\$92,655,442.07	\$95,004,749.33	\$76,527,781.53	\$30,241,903.16	\$395,935,989.49

NA - Not Applicable (unit did not exist or was in another division)

Table 2a. Awards received by departments within colleges FY10 through January FY14 YTD

<u>College</u>	<u>FY10</u>	<u>FY11</u>	<u>FY12</u>	<u>FY13</u>	<u>FY14 YTD</u>	<u>Totals</u>
Arts and Sciences	\$9,737,385.85	\$14,719,616.34	\$13,506,337.60	\$10,217,827.48	\$3,392,008.89	\$51,573,176.16
ARCHEOLOGY AND APPLIED HISTORY	NA	NA	NA	\$34,869.00	\$22,477.00	\$57,346.00
ART	\$0.00	\$0.00	\$0.00	\$0.00	\$0.00	\$0.00
CANCER PREV RESEARCH CTR (PSY)	\$4,471,253.89	\$3,136,818.20	\$4,716,924.55	\$3,209,160.65	\$323,927.50	\$15,858,084.79
CHEMISTRY	\$1,430,340.26	\$7,856,684.49	\$2,496,787.75	\$3,734,821.70	\$837,846.55	\$16,356,480.75
COMMUNICATION STUDIES	\$0.00	\$29,918.00	\$0.00	\$0.00	\$0.00	\$29,918.00
COMPUTER SCIENCE/STATISTICS	\$977,411.00	\$778,198.00	\$451,367.00	\$1,219,627.26	\$159,245.55	\$3,585,848.81
DEAN'S OFFICE	\$0.00	\$48,742.65	\$400,721.25	\$0.00	\$11,151.49	\$460,615.39
ECONOMICS	\$0.00	\$0.00	\$0.00	\$0.00	\$0.00	\$0.00
FEINSTEIN HUNGER CTR(DEAN'S OFFICE)	\$758,760.00	\$820,549.00	\$874,383.00	\$850,654.00	\$797,488.00	\$4,101,834.00
HISTORY	\$39,999.00	\$45,983.00	\$127,850.00	\$145,150.00	\$200,500.00	\$559,482.00
INTERNATIONAL ENGINEERING PROG	\$31,031.25	\$0.00	\$22,642.95	\$0.00	\$0.00	\$53,674.20
LANGUAGES	\$360,220.25	\$440,592.00	\$1,690,588.10	\$249,610.00	\$419,870.00	\$3,160,880.35
LIBRARY AND INFORMATION STUDIES	\$22,064.40	\$0.00	\$0.00	\$0.00	\$50,000.00	\$72,064.40
MATHEMATICS	\$0.00	\$0.00	\$52,945.00	\$245,849.87	\$108,832.55	\$407,627.42
PHYSICS	\$1,331,280.00	\$778,004.00	\$1,294,192.00	\$403,189.00	\$408,304.50	\$4,214,969.50
PSYCHOLOGY (EXCLUDES CPRC)	\$266,331.20	\$695,741.50	\$1,332,244.00	\$71,983.00	\$0.00	\$2,366,299.70
SOCIOLOGY/ANTHROPOLOGY	\$48,694.60	\$86,385.50	\$45,692.00	\$8,491.00	\$7,641.75	\$196,904.85
THEATRE	\$0.00	\$0.00	\$0.00	\$0.00	\$0.00	\$0.00
WOMEN'S STUDIES	\$0.00	\$2,000.00	\$0.00	\$0.00	\$0.00	\$2,000.00
WRITING AND RHETORIC	NA	NA	NA	\$44,422.00	\$44,724.00	\$89,146.00
Business Administration	\$43,901.60	\$108,472.45	\$26,200.00	\$30,264.83	\$12,296.44	\$221,135.32
ACCOUNTING	\$0.00	\$0.00	\$0.00	\$0.00	\$0.00	\$0.00
DEAN'S OFFICE	\$0.00	\$0.00	\$0.00	\$0.00	\$0.00	\$0.00
FACULTY - INSTRUCTION	\$33,690.00	\$98,260.85	\$26,200.00	\$30,264.83	\$12,296.44	\$200,712.12
MANAGEMENT	\$10,211.60	\$10,211.60	\$0.00	\$0.00	\$0.00	\$20,423.20

NA - Not Applicable (department did not exist or was in another college)

<u>College</u>	<u>FY10</u>	<u>FY11</u>	<u>FY12</u>	<u>FY13</u>	<u>FY14 YTD</u>	<u>Totals</u>
Contiuing Education	\$0.00	\$0.00	\$239,999.40	\$0.00	\$199,568.70	\$439,568.10
Engineering	\$8,643,672.05	\$7,308,043.58	\$6,004,532.53	\$5,160,510.74	\$1,943,028.84	\$29,059,787.74
CHEMICAL ENGINEERING	\$1,326,159.02	\$2,551,670.47	\$1,361,773.51	\$630,281.44	\$796,507.28	\$6,666,391.72
CIVIL/ENVIRONMENTAL ENGINEERING	\$375,636.00	\$141,223.20	\$300,522.00	\$710,021.53	\$383,582.60	\$1,910,985.33
DEAN'S OFFICE	\$0.00	\$0.00	\$65,999.00	\$0.00	\$0.00	\$65,999.00
ELECTRICAL ENGINEERING	\$2,891,127.00	\$1,968,203.00	\$1,721,659.56	\$1,751,239.87	\$170,000.00	\$8,502,229.43
MECHANICAL & INDUSTRIAL SYS EGR	\$1,471,881.75	\$2,007,596.89	\$1,678,626.21	\$1,442,279.23	\$332,428.56	\$6,932,812.64
OCEAN ENGINEERING	\$2,578,868.28	\$639,350.02	\$875,952.25	\$626,688.67	\$260,510.40	\$4,981,369.62
Environment and Life Sciences	\$16,232,137.30	\$21,932,032.49	\$26,590,123.59	\$18,531,363.71	\$8,723,523.91	\$92,009,181.00
BIOLOGICAL SCIENCES	\$864,651.05	\$649,397.10	\$820,875.90	\$1,999,526.20	\$431,102.00	\$4,765,552.25
CELL AND MOLECULAR BIOLOGY	\$3,797,940.90	\$6,611,786.35	\$9,061,495.57	\$5,851,712.00	\$2,748,634.86	\$28,071,569.68
COMMUNITY PLANNING/AREA DEVEL	\$0.00	\$92,480.80	\$0.00	\$78,020.84	\$11,573.12	\$182,074.76
COOPERATIVE EXTENSION	\$518,818.00	\$569,047.10	\$840,103.00	\$1,007,000.18	\$160,925.55	\$3,095,893.83
DEAN'S OFFICE	\$760,250.60	\$3,904,844.00	\$3,412,524.00	\$3,088,215.00	\$1,058,273.28	\$12,224,106.88
ENV & NAT RESOURCE ECONOMICS	\$1,042,235.60	\$208,164.00	\$133,915.79	\$127,166.00	\$19,782.00	\$1,531,263.39
FISHERIES, ANIMAL & VET SCIENCE	\$490,715.20	\$1,686,520.87	\$1,054,268.52	\$1,450,456.60	\$483,519.60	\$5,165,480.79
GEOSCIENCES	\$153,164.30	\$281,612.50	\$6,072,649.00	\$1,314,837.49	\$237,652.25	\$8,059,915.54
MARINE AFFAIRS	\$107,965.75	\$186,751.47	\$92,447.00	\$123,508.00	\$3,837.00	\$514,509.22
NATURAL RESOURCES SCIENCE	\$4,559,105.25	\$4,475,448.00	\$2,510,809.59	\$1,459,896.00	\$2,249,098.00	\$15,254,356.84
NUTRITION AND FOOD SCIENCES	\$2,012,483.00	\$1,040,538.50	\$1,009,287.81	\$1,031,710.00	\$908,519.00	\$6,002,538.31
PLANT SCIENCE	\$1,924,807.65	\$2,225,441.80	\$1,581,747.41	\$999,315.40	\$410,607.25	\$7,141,919.51

<u>College</u>	<u>FY10</u>	<u>FY11</u>	<u>FY12</u>	<u>FY13</u>	<u>FY14 YTD</u>	<u>Totals</u>
Graduate School	\$51,366.00	\$133,960.00	\$0.00	\$922.00	\$0.00	\$186,248.00
Human Science and Services	\$2,970,596.81	\$2,754,906.50	\$3,316,524.30	\$860,634.00	\$2,498,641.40	\$12,401,303.01
CENTER FOR HUMAN SERVICES	\$0.00	\$0.00	\$0.00	\$0.00	\$49,802.00	\$49,802.00
COMMUNICATIVE DISORDERS	\$26,800.00	\$50,000.00	\$0.00	\$0.00	\$0.00	\$76,800.00
DEAN'S OFFICE	\$231,454.81	\$682,121.00	\$955,527.00	\$232,908.00	\$298,417.00	\$2,400,427.81
EDUCATION	\$1,072,212.00	\$1,487,628.00	\$939,834.00	\$535,658.00	\$1,544,868.90	\$5,580,200.90
GERONTOLOGY	\$757,040.40	\$207,449.50	\$864,295.30	\$0.00	\$135,226.50	\$1,964,011.70
HUMAN DEV/COUNSEL/FAM STUDIES	\$90,059.00	\$301,708.00	\$216,144.00	\$92,068.00	\$91,886.00	\$791,865.00
KINESIOLOGY	\$267,673.20	\$0.00	\$0.00	\$0.00	\$0.00	\$267,673.20
PHYSICAL THERAPY	\$521,058.00	\$0.00	\$340,724.00	\$0.00	\$341,442.00	\$1,203,224.00
TEXTILES/FASHION MERCHAND/DESIGN	\$4,299.40	\$26,000.00	\$0.00	\$0.00	\$36,999.00	\$67,298.40
Nursing	\$2,206,995.80	\$682,049.15	\$1,996,376.45	\$1,038,977.00	\$879,779.00	\$6,804,177.40
Oceanography	\$32,473,931.12	\$25,768,864.02	\$29,987,097.20	\$28,261,624.70	\$5,861,151.71	\$122,352,668.75
Pharmacy	\$11,195,695.47	\$8,875,242.63	\$10,456,774.36	\$5,928,531.97	\$2,127,055.40	\$38,583,299.83
BIOMEDICAL & PHARMACEUTICAL SCI	\$8,595,883.92	\$6,958,789.13	\$5,743,988.01	\$5,029,978.72	\$915,148.40	\$27,243,788.18
CRIME LAB	\$812,676.00	\$843,740.00	\$77,228.21	\$27,172.25	\$20,000.00	\$1,780,816.46
DEAN'S OFFICE	\$0.00	\$0.00	\$0.00	\$0.00	\$0.00	\$0.00
ELDERLY MEDICATION	NA	\$20,000.00	\$0.00	\$0.00	\$0.00	\$20,000.00
LIVING RITE/HEALTH POLICY	NA	NA	\$3,161,892.60	\$0.00	\$811,359.00	\$3,973,251.60
PHARMACY PRACTICE	\$1,787,135.55	\$1,052,713.50	\$1,473,665.54	\$871,381.00	\$380,548.00	\$5,565,443.59
University College	\$96,550.00	\$90,840.00	\$334,918.40	\$0.00	\$199,568.70	\$721,877.10

<u>College</u>	<u>FY10</u>	<u>FY11</u>	<u>FY12</u>	<u>FY13</u>	<u>FY14 YTD</u>	<u>Totals</u>
University Library	\$3,900.00	NA	NA	NA	NA	\$3,900.00

NA - Not Applicable (unit did not exist or was in another division)

Table 2b. Awards received by units within administrative divisions FY10 through January FY14 YTD

<u>Administrative Unit</u>	<u>FY10</u>	<u>FY11</u>	<u>FY12</u>	<u>FY13</u>	<u>FY14 YTD</u>	<u>Totals</u>
President's Office	\$0.00	\$2,900.00	\$0.00	\$0.00	\$0.00	\$2,900.00
Provost	\$1,306,675.00	\$84,642.45	\$458,078.10	\$11,025.46	\$66,522.90	\$1,926,943.91
ADVANCE OFFICE	\$10,000.00	\$0.00	\$0.00	\$0.00	\$0.00	\$10,000.00
LABOR RESEARCH CENTER	\$19,600.00	\$35,899.80	\$0.00	\$11,025.46	\$0.00	\$66,525.26
NETWORK AND TELECOM SERVICES	\$924,858.00	\$0.00	\$0.00	\$0.00	\$0.00	\$924,858.00
PROVOST	\$352,217.00	\$48,742.65	\$458,078.10	\$0.00	\$66,522.90	\$925,560.65
UNIVERSITY LIBRARY	NA	\$0.00	\$0.00	\$0.00	\$0.00	\$0.00
VP, Administration	\$13,879,383.50	\$2,093,977.64	\$1,847,788.00	\$486,099.64	\$77,665.57	\$18,384,914.35
TRANSPORTATION CENTER	\$1,354,101.50	\$1,744,823.54	\$1,522,497.00	\$474,151.64	\$77,665.57	\$5,173,239.25
VICE PRESIDENT FOR ADMINISTRATION	\$12,525,282.00	\$349,154.10	\$325,291.00	\$11,948.00	\$0.00	\$13,211,675.10
VP, Research & Economic Development	\$2,512,500.00	\$8,072,900.00	\$0.00	\$6,000,000.00	\$4,000,000.00	\$20,585,400.00
VP, Student Affairs	\$151,422.90	\$26,994.82	\$239,999.40	\$0.00	\$261,091.70	\$679,508.82
CAMPUS LIFE	\$0.00	\$0.00	\$0.00	\$0.00	\$0.00	\$0.00
HEALTH SERVICES	\$0.00	\$0.00	\$0.00	\$0.00	\$0.00	\$0.00
STUDENT LIFE	\$151,422.90	\$0.00	\$0.00	\$0.00	\$61,523.00	\$212,945.90
TALENT DEVELOPMENT	\$0.00	\$26,994.82	\$239,999.40	\$0.00	\$199,568.70	\$466,562.92

NA - Not Applicable (unit did not exist or was in another division)