

University of Rhode Island

DigitalCommons@URI

---

Conservation: Hearings, Reports,  
Correspondence (1971-1973)

Education: National Endowment for the Arts  
and Humanities, Subject Files I (1973-1996)

---

1-11-1971

## Conservation: Hearings, Reports, Correspondence (1971-1973): Correspondence 13

Follow this and additional works at: [https://digitalcommons.uri.edu/pell\\_neh\\_I\\_18](https://digitalcommons.uri.edu/pell_neh_I_18)

---

### Recommended Citation

"Conservation: Hearings, Reports, Correspondence (1971-1973): Correspondence 13" (1971).  
*Conservation: Hearings, Reports, Correspondence (1971-1973)*. Paper 22.  
[https://digitalcommons.uri.edu/pell\\_neh\\_I\\_18/22](https://digitalcommons.uri.edu/pell_neh_I_18/22)[https://digitalcommons.uri.edu/pell\\_neh\\_I\\_18/22](https://digitalcommons.uri.edu/pell_neh_I_18/22)

This Correspondence is brought to you for free and open access by the Education: National Endowment for the Arts and Humanities, Subject Files I (1973-1996) at DigitalCommons@URI. It has been accepted for inclusion in Conservation: Hearings, Reports, Correspondence (1971-1973) by an authorized administrator of DigitalCommons@URI. For more information, please contact [digitalcommons@etal.uri.edu](mailto:digitalcommons@etal.uri.edu).

HW

B

January 11, 1971

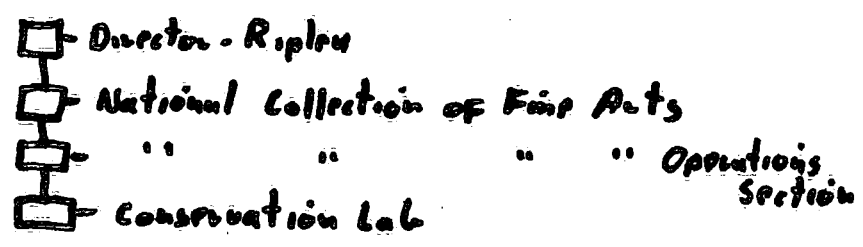
To: ~~Senator Pell~~

From: Stephen

Re: Conservation Laboratory

At a recent lunch with Charles Olin, we discussed the conservation laboratory. Charles has definitely moved away from the idea of a private foundation. He is most happy at the Smithsonian, being given a free hand to work, experiment, teach and lecture; however, he believes that there should be certain changes made within the Smithsonian to make conservation work more effective.

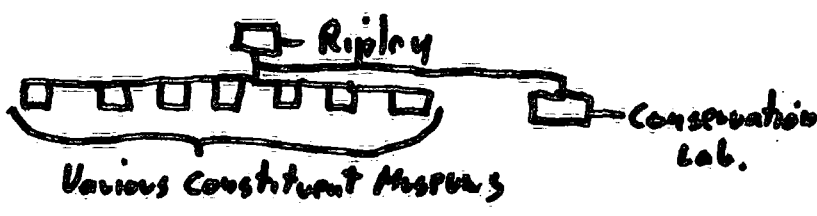
Basically, the problem is that Charles's conservation laboratory, the only laboratory within the Smithsonian, is under the direction of one of the constituent parts of the Smithsonian as follows:



Since Charles does work for all the other areas in the Smithsonian, perhaps the most logical thing to do would be to support reform of the internal structure of the Smithsonian and have the conservation laboratory as an adjunct of the Secretariat (Mr. Dillon) so that,

1. It would have greater visibility, and
2. could service all of the Smithsonian and perhaps even the National Gallery, which has no conservation laboratory of its own.

It would look like:



The question of how to do this, I don't know. Perhaps we could start by a letter from you to Mr. Ripley, expressing your concern about conservation of American art, asking what conservation programs are carried on by the Smithsonian. Consideration could also be given to a day of hearings about the Conservation of American Art. **This would serve as a base for conversations with Mr. Ripley.**