

2010

# Division of Research and Economic Development Monthly Report for February 2010

URI Division of Research and Economic Development

Follow this and additional works at: [http://digitalcommons.uri.edu/researchecondev\\_reports](http://digitalcommons.uri.edu/researchecondev_reports)

---

## Recommended Citation

URI Division of Research and Economic Development, "Division of Research and Economic Development Monthly Report for February 2010" (2010). *Reports (Research and Economic Development)*. Paper 21.  
[http://digitalcommons.uri.edu/researchecondev\\_reports/21](http://digitalcommons.uri.edu/researchecondev_reports/21)

This Periodical is brought to you for free and open access by the Division of Research and Economic Development at DigitalCommons@URI. It has been accepted for inclusion in Reports (Research and Economic Development) by an authorized administrator of DigitalCommons@URI. For more information, please contact [digitalcommons@etal.uri.edu](mailto:digitalcommons@etal.uri.edu).

**Table 1. Proposals processed by the Office of Sponsored Projects Review FY06 through February FY10**

| Month        | FY06       |            |                         |                         | FY07       |            |                         |                         |
|--------------|------------|------------|-------------------------|-------------------------|------------|------------|-------------------------|-------------------------|
|              | Number     |            | Amount Requested        |                         | Number     |            | Amount Requested        |                         |
|              | Count      | Cum. Ct.   | Amount                  | Cum. Amt.               | Count      | Cum. Ct.   | Amount                  | Cum. Amt.               |
| July         | 46         | 46         | \$7,514,515.80          | \$7,514,515.80          | 47         | 47         | \$20,603,130.99         | \$20,603,130.99         |
| August       | 67         | 113        | \$19,291,514.26         | \$26,806,030.06         | 47         | 94         | \$16,827,319.64         | \$37,430,450.63         |
| September    | 36         | 149        | \$17,398,035.21         | \$44,204,065.27         | 37         | 131        | \$13,452,282.90         | \$50,882,733.53         |
| October      | 70         | 219        | \$32,289,956.96         | \$76,494,022.23         | 78         | 209        | \$21,421,348.77         | \$72,304,082.30         |
| November     | 44         | 263        | \$12,379,412.94         | \$88,873,435.17         | 52         | 261        | \$12,236,742.00         | \$84,540,824.30         |
| December     | 37         | 300        | \$11,624,742.10         | \$100,498,177.27        | 39         | 300        | \$9,375,521.40          | \$93,916,345.70         |
| January      | 58         | 358        | \$26,391,464.30         | \$126,889,641.57        | 56         | 356        | \$15,832,150.81         | \$109,748,496.51        |
| February     | 60         | 418        | \$16,648,336.00         | \$143,537,977.57        | 68         | 424        | \$41,778,787.00         | \$151,527,283.51        |
| March        | 53         | 471        | \$14,082,010.15         | \$157,619,987.72        | 57         | 481        | \$24,295,050.10         | \$175,822,333.61        |
| April        | 43         | 514        | \$5,937,081.51          | \$163,557,069.23        | 36         | 517        | \$5,363,201.08          | \$181,185,534.69        |
| May          | 65         | 579        | \$23,262,190.18         | \$186,819,259.41        | 68         | 585        | \$25,343,205.37         | \$206,528,740.06        |
| June         | 55         | 634        | \$13,874,399.99         | \$200,693,659.40        | 75         | 660        | \$27,241,525.21         | \$233,770,265.27        |
| <b>Total</b> | <b>634</b> | <b>634</b> | <b>\$200,693,659.40</b> | <b>\$200,693,659.40</b> | <b>660</b> | <b>660</b> | <b>\$233,770,265.27</b> | <b>\$233,770,265.27</b> |

| Month        | FY08       |            |                         |                         | FY09       |            |                         |                         | FY10       |            |                         |                         |
|--------------|------------|------------|-------------------------|-------------------------|------------|------------|-------------------------|-------------------------|------------|------------|-------------------------|-------------------------|
|              | Number     |            | Amount Requested        |                         | Number     |            | Amount Requested        |                         | Number     |            | Amount Requested        |                         |
|              | Count      | Cum. Ct.   | Amount                  | Cum. Amt.               | Count      | Cum. Ct.   | Amount                  | Cum. Amt.               | Count      | Cum. Ct.   | Amount                  | Cum. Amt.               |
| July         | 54         | 54         | \$33,842,834.37         | \$33,842,834.37         | 58         | 58         | \$51,217,673.28         | \$51,217,673.28         | 66         | 66         | \$42,425,118.76         | \$42,425,118.76         |
| August       | 48         | 102        | \$18,649,661.71         | \$52,492,496.08         | 54         | 112        | \$33,046,189.43         | \$84,263,862.71         | 44         | 110        | \$21,899,935.75         | \$64,325,054.51         |
| September    | 39         | 141        | \$6,908,530.31          | \$59,401,026.39         | 45         | 157        | \$14,489,338.81         | \$98,753,201.52         | 65         | 175        | \$25,011,440.51         | \$89,336,495.02         |
| October      | 61         | 202        | \$19,838,573.08         | \$79,239,599.47         | 64         | 221        | \$14,304,818.80         | \$113,058,020.32        | 71         | 246        | \$26,234,467.51         | \$115,570,962.53        |
| November     | 46         | 248        | \$10,043,051.00         | \$89,282,650.47         | 55         | 276        | \$31,661,764.20         | \$144,719,784.52        | 61         | 307        | \$82,285,132.56         | \$197,856,095.09        |
| December     | 49         | 297        | \$19,600,544.28         | \$108,883,194.75        | 47         | 323        | \$10,999,368.29         | \$155,719,152.81        | 40         | 347        | \$14,354,220.63         | \$212,210,315.72        |
| January      | 53         | 350        | \$14,342,315.04         | \$123,225,509.79        | 43         | 366        | \$56,837,864.00         | \$212,557,016.81        | 32         | 379        | \$14,151,645.00         | \$226,361,960.72        |
| February     | 63         | 413        | \$25,700,702.83         | \$148,926,212.62        | 65         | 431        | \$24,785,454.88         | \$237,342,471.69        | 85         | 464        | \$41,067,411.00         | \$267,429,371.72        |
| March        | 35         | 448        | \$11,825,803.96         | \$160,752,016.58        | 52         | 483        | \$18,120,178.56         | \$255,462,650.25        |            |            |                         |                         |
| April        | 63         | 511        | \$29,523,641.59         | \$190,275,658.17        | 93         | 576        | \$34,510,660.56         | \$289,973,310.81        |            |            |                         |                         |
| May          | 63         | 574        | \$23,450,049.82         | \$213,725,707.99        | 86         | 662        | \$62,914,486.43         | \$352,887,797.24        |            |            |                         |                         |
| June         | 64         | 638        | \$25,890,560.06         | \$239,616,268.05        | 82         | 744        | \$60,860,874.79         | \$413,748,672.03        |            |            |                         |                         |
| <b>Total</b> | <b>638</b> | <b>638</b> | <b>\$239,616,268.05</b> | <b>\$239,616,268.05</b> | <b>744</b> | <b>744</b> | <b>\$413,748,672.03</b> | <b>\$413,748,672.03</b> | <b>464</b> | <b>464</b> | <b>\$267,429,371.72</b> | <b>\$267,429,371.72</b> |

Figure 1a. Cumulative totals of numbers of proposals submitted FY06 through February FY10

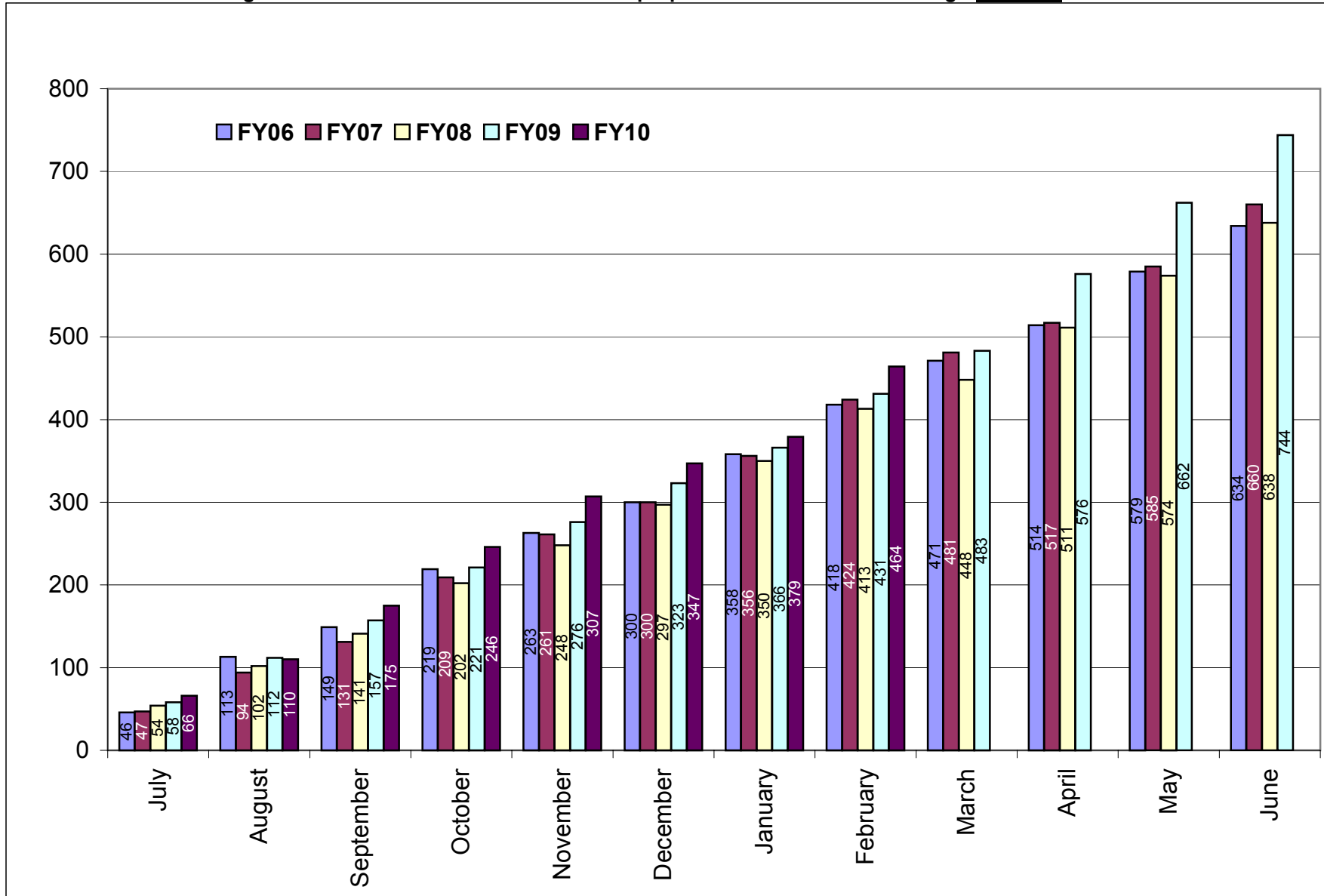
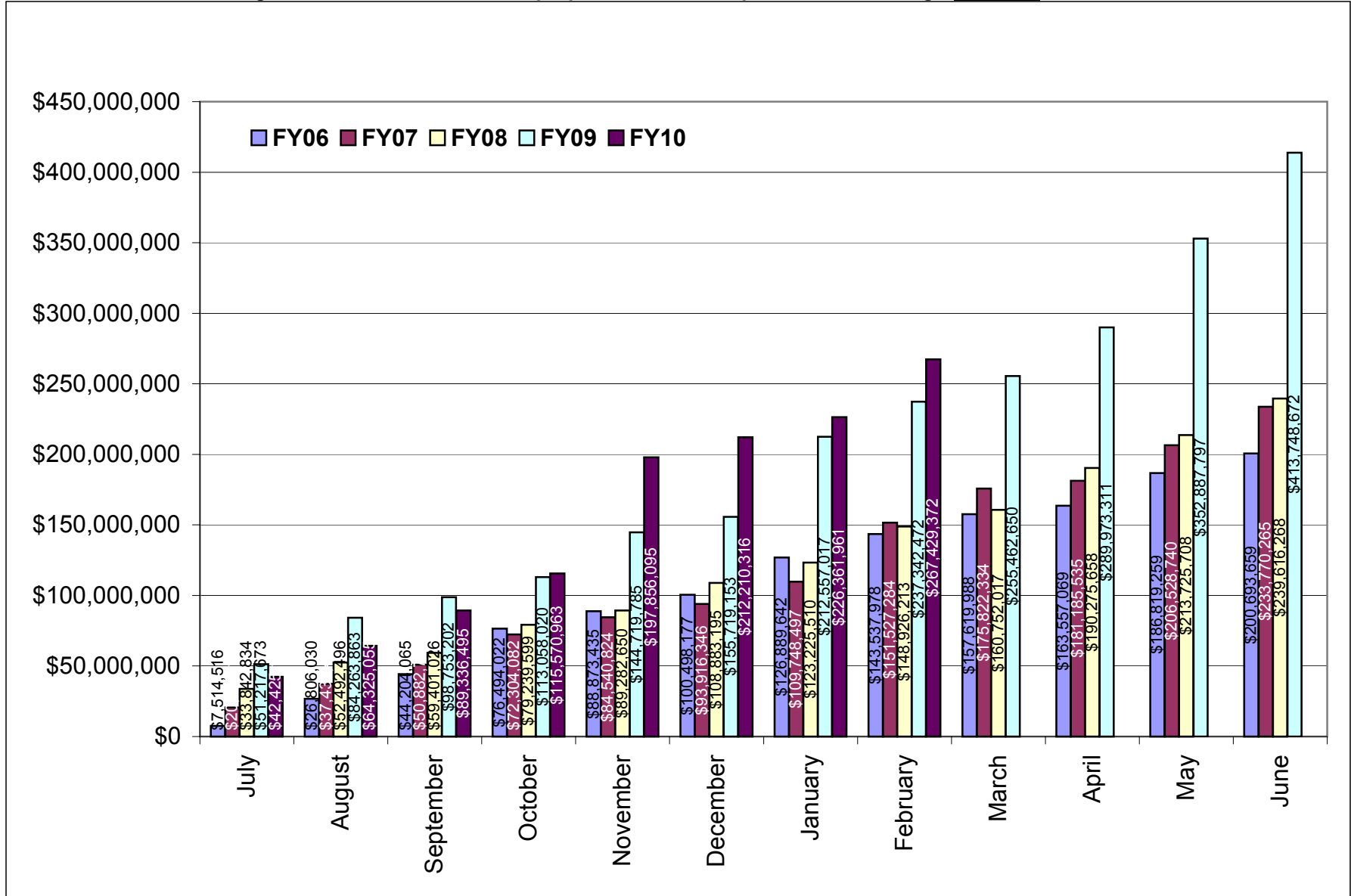


Figure 1b. Cumulative totals of proposal amounts requested FY06 through February FY10



**Table 2. Awards processed by the Office of Sponsored Projects Review FY06 through February FY10**

|              | FY06       |            |                        |                        | FY07       |            |                        |                        |
|--------------|------------|------------|------------------------|------------------------|------------|------------|------------------------|------------------------|
|              | Number     |            | Amount Awarded         |                        | Number     |            | Amount Awarded         |                        |
| Month        | Count      | Cum. Ct.   | Amount                 | Cum. Amt.              | Count      | Cum. Ct.   | Amount                 | Cum. Amt.              |
| July         | 36         | 36         | \$8,184,631.73         | \$8,184,631.73         | 44         | 44         | \$3,630,455.25         | \$3,630,455.25         |
| August       | 51         | 87         | \$8,884,672.35         | \$17,069,304.08        | 43         | 87         | \$4,738,246.38         | \$8,368,701.63         |
| September    | 46         | 133        | \$5,812,274.19         | \$22,881,578.27        | 31         | 118        | \$7,322,287.00         | \$15,690,988.63        |
| October      | 53         | 186        | \$11,310,965.90        | \$34,192,544.17        | 47         | 165        | \$7,808,245.88         | \$23,499,234.51        |
| November     | 37         | 223        | \$6,414,477.00         | \$40,607,021.17        | 35         | 200        | \$3,765,622.92         | \$27,264,857.43        |
| December     | 22         | 245        | \$3,041,531.55         | \$43,648,552.72        | 28         | 228        | \$5,077,394.86         | \$32,342,252.29        |
| January      | 35         | 280        | \$2,476,893.00         | \$46,125,445.72        | 27         | 255        | \$2,070,155.00         | \$34,412,407.29        |
| February     | 21         | 301        | \$3,290,780.00         | \$49,416,225.72        | 29         | 284        | \$3,346,724.45         | \$37,759,131.74        |
| March        | 34         | 335        | \$7,789,588.25         | \$57,205,813.97        | 39         | 323        | \$3,982,337.70         | \$41,741,469.44        |
| April        | 31         | 366        | \$3,782,080.00         | \$60,987,893.97        | 29         | 352        | \$4,053,313.60         | \$45,794,783.04        |
| May          | 36         | 402        | \$5,050,148.27         | \$66,038,042.24        | 31         | 383        | \$7,489,552.71         | \$53,284,335.75        |
| June         | 38         | 440        | \$7,410,074.73         | \$73,448,116.97        | 54         | 437        | \$8,974,656.16         | \$62,258,991.91        |
| <b>Total</b> | <b>440</b> | <b>440</b> | <b>\$73,448,116.97</b> | <b>\$73,448,116.97</b> | <b>437</b> | <b>437</b> | <b>\$62,258,991.91</b> | <b>\$62,258,991.91</b> |

|              | FY08       |            |                        |                        | FY09       |            |                        |                        | FY10       |            |                        |                        |
|--------------|------------|------------|------------------------|------------------------|------------|------------|------------------------|------------------------|------------|------------|------------------------|------------------------|
|              | Number     |            | Amount Awarded         |                        | Number     |            | Amount Awarded         |                        | Number     |            | Amount Awarded         |                        |
| Month        | Count      | Cum. Ct.   | Amount                 | Cum. Amt.              | Count      | Cum. Ct.   | Amount                 | Cum. Amt.              | Count      | Cum. Ct.   | Amount                 | Cum. Amt.              |
| July         | 20         | 20         | \$2,909,307.42         | \$2,909,307.42         | 24         | 24         | \$2,141,955.29         | \$2,141,955.29         | 28         | 28         | \$8,427,538.60         | \$8,427,538.60         |
| August       | 44         | 64         | \$7,784,335.67         | \$10,693,643.09        | 46         | 70         | \$8,247,877.00         | \$10,389,832.29        | 43         | 71         | \$14,167,899.21        | \$22,595,437.81        |
| September    | 51         | 115        | \$5,958,412.96         | \$16,652,056.05        | 52         | 122        | \$18,410,083.68        | \$28,799,915.97        | 70         | 141        | \$12,469,481.84        | \$35,064,919.65        |
| October      | 47         | 162        | \$6,965,281.97         | \$23,617,338.02        | 39         | 161        | \$3,249,691.41         | \$32,049,607.38        | 46         | 187        | \$7,664,128.20         | \$42,729,047.85        |
| November     | 25         | 187        | \$2,868,646.00         | \$26,485,984.02        | 27         | 188        | \$5,407,192.48         | \$37,456,799.86        | 26         | 213        | \$2,647,733.00         | \$45,376,780.85        |
| December     | 29         | 216        | \$2,706,955.70         | \$29,192,939.72        | 33         | 221        | \$2,800,282.84         | \$40,257,082.70        | 30         | 243        | \$4,769,306.73         | \$50,146,087.58        |
| January      | 29         | 245        | \$2,669,738.69         | \$31,862,678.41        | 22         | 243        | \$6,328,758.19         | \$46,585,840.89        | 29         | 272        | \$4,596,231.77         | \$54,742,319.35        |
| February     | 24         | 269        | \$2,253,601.01         | \$34,116,279.42        | 30         | 273        | \$4,286,284.20         | \$50,872,125.09        | 36         | 308        | \$8,022,999.41         | \$62,765,318.76        |
| March        | 27         | 296        | \$6,247,390.82         | \$40,363,670.24        | 31         | 304        | \$2,747,671.27         | \$53,619,796.36        |            |            |                        |                        |
| April        | 42         | 338        | \$5,655,452.97         | \$46,019,123.21        | 39         | 343        | \$5,819,654.03         | \$59,439,450.39        |            |            |                        |                        |
| May          | 39         | 377        | \$3,810,983.48         | \$49,830,106.69        | 36         | 379        | \$11,297,894.00        | \$70,737,344.39        |            |            |                        |                        |
| June         | 57         | 434        | \$13,904,362.84        | \$63,734,469.53        | 70         | 449        | \$11,864,403.60        | \$82,601,747.99        |            |            |                        |                        |
| <b>Total</b> | <b>434</b> | <b>434</b> | <b>\$63,734,469.53</b> | <b>\$63,734,469.53</b> | <b>449</b> | <b>449</b> | <b>\$82,601,747.99</b> | <b>\$82,601,747.99</b> | <b>308</b> | <b>308</b> | <b>\$62,765,318.76</b> | <b>\$62,765,318.76</b> |

Figure 2a. Cumulative totals of numbers of awards received FY06 through February FY10

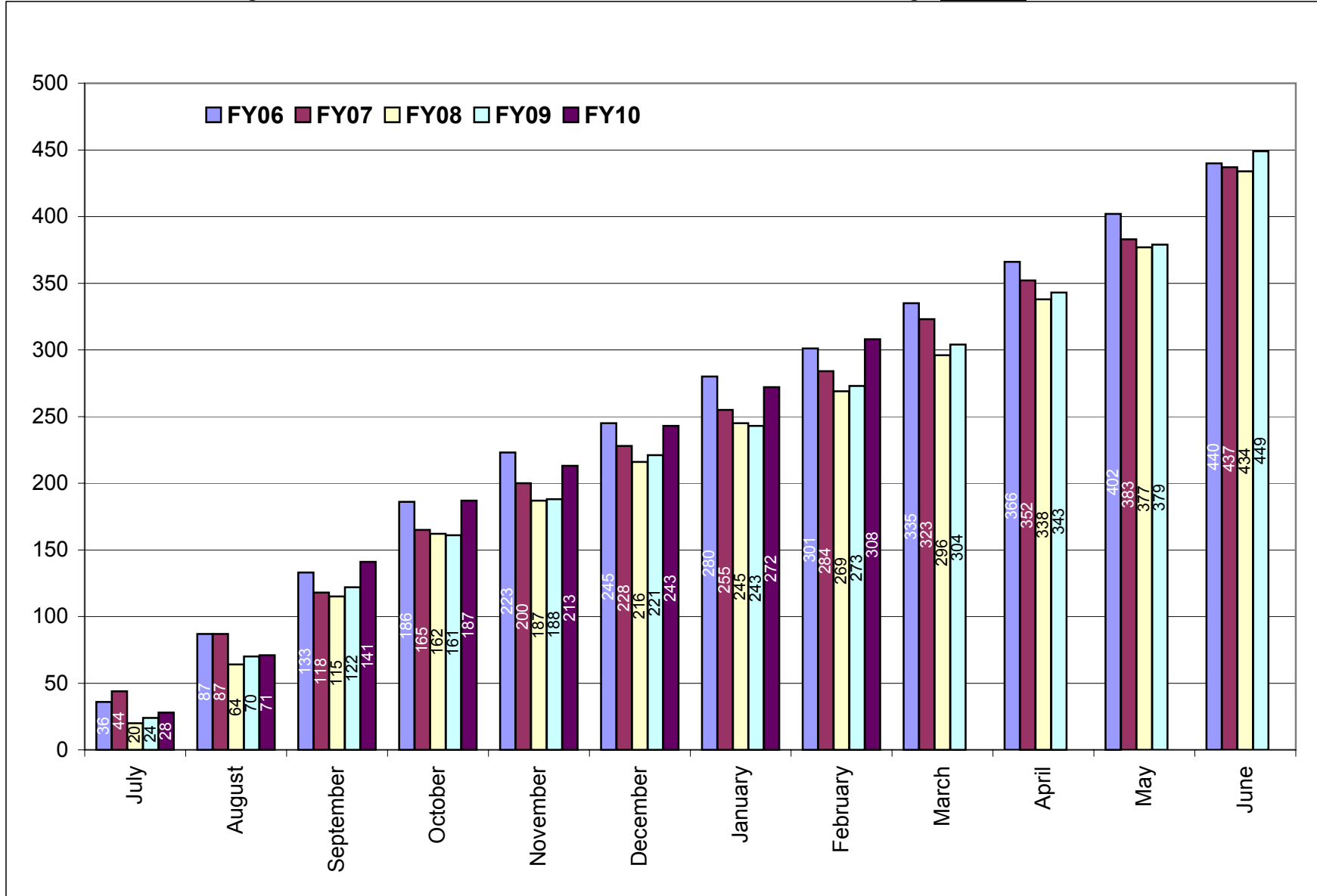
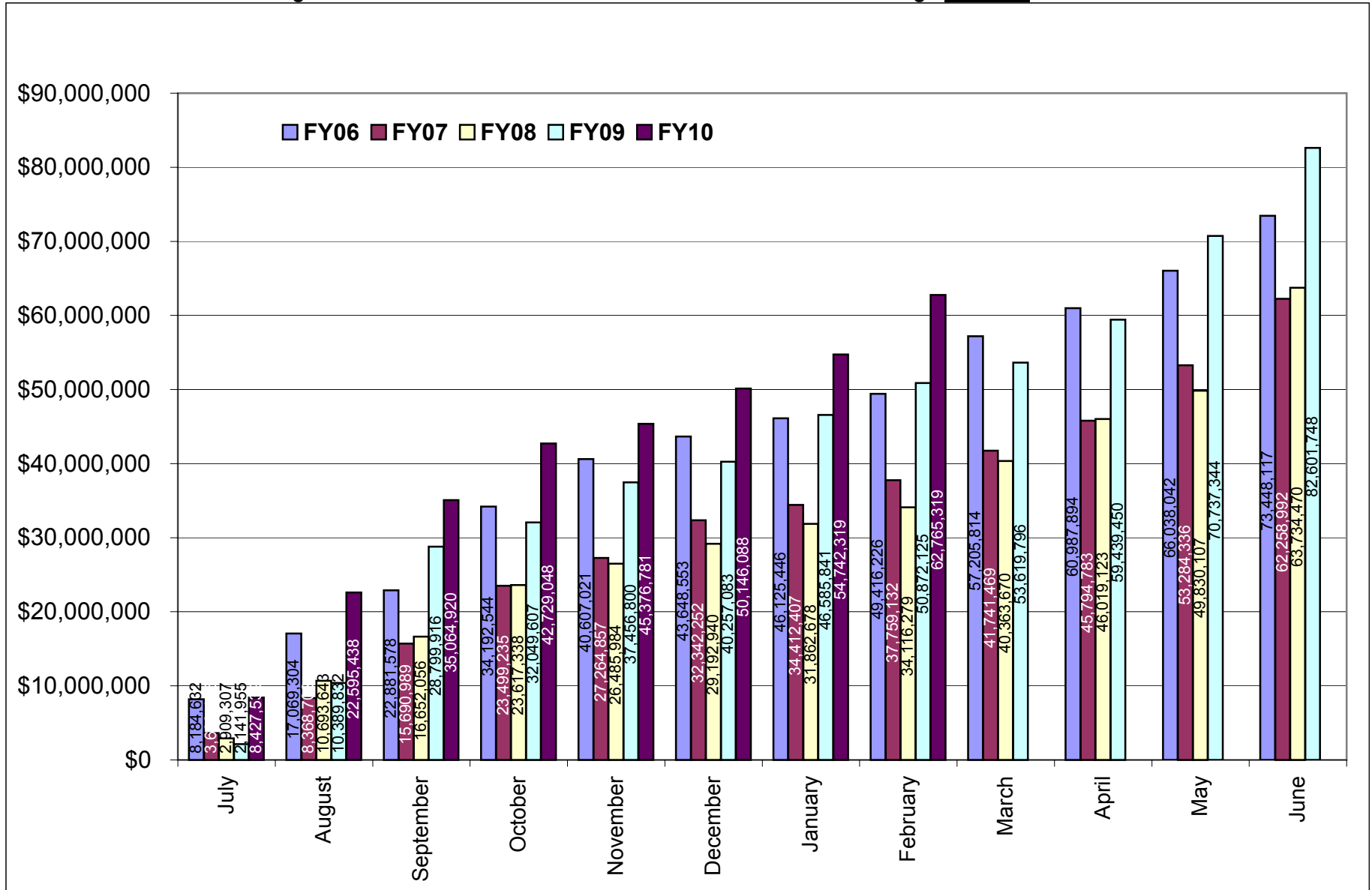


Figure 2b. Cumulative totals of award amounts received FY06 through February FY10



**Table 3. Summary of awards received by administrative and academic units FY06 through February FY10**

| <b>Administrative</b>       | <b>FY06</b>            | <b>FY07</b>            | <b>FY08</b>            | <b>FY09</b>            | <b>FY10 YTD</b>        | <b>Totals</b>           |
|-----------------------------|------------------------|------------------------|------------------------|------------------------|------------------------|-------------------------|
| PRESIDENT'S OFFICE          | \$1,883,412.00         | \$356,399.00           | \$1,328,095.20         | \$1,915,830.58         | \$1,218,685.00         | \$6,702,421.78          |
| PROVOST                     | \$0.00                 | \$3,011.60             | \$22,500.00            | \$22,594.29            | \$371,817.00           | \$419,922.89            |
| VP, ADMINISTRATION          | \$92,325.00            | \$0.00                 | \$0.00                 | \$1,931,783.00         | \$352,217.00           | \$2,376,325.00          |
| VP, RESEARCH & ECON DEV     | \$495,407.50           | \$131,299.00           | \$0.00                 | \$0.00                 | \$3,437,358.00         | \$4,064,064.50          |
| VP, STUDENT AFFAIRS         | \$601,203.29           | \$652,222.00           | \$287,357.80           | \$498,340.56           | \$54,567.40            | \$2,093,691.05          |
| <b>Academic</b>             |                        |                        |                        |                        |                        |                         |
| ARTS & SCIENCES             | \$7,944,157.04         | \$8,078,890.27         | \$12,885,156.25        | \$11,295,659.54        | \$6,370,055.60         | \$46,573,918.70         |
| BUSINESS ADMINISTRATION     | \$67,119.21            | \$0.00                 | \$0.00                 | \$10,211.60            | \$10,211.60            | \$87,542.41             |
| CONTINUING EDUCATION        | \$14,515.00            | \$0.00                 | \$0.00                 | \$0.00                 | \$0.00                 | \$14,515.00             |
| ENGINEERING                 | \$7,504,080.77         | \$4,744,073.66         | \$4,525,285.47         | \$5,310,483.76         | \$6,458,038.50         | \$28,541,962.16         |
| ENVIRONMENT & LIFE SCIENCES | \$13,830,497.57        | \$13,678,422.86        | \$9,507,339.56         | \$22,944,993.28        | \$12,805,956.14        | \$72,767,209.41         |
| GRADUATE SCHOOL             | \$0.00                 | \$0.00                 | \$0.00                 | \$125,718.00           | \$0.00                 | \$125,718.00            |
| HUMAN SCIENCE & SERVICES    | \$4,465,380.40         | \$6,394,476.43         | \$6,407,781.91         | \$2,751,536.90         | \$1,139,667.61         | \$21,158,843.25         |
| NURSING                     | \$919,777.55           | \$835,971.48           | \$927,796.54           | \$1,075,832.30         | \$1,565,302.80         | \$5,324,680.67          |
| OCEANOGRAPHY                | \$26,282,651.39        | \$20,520,548.16        | \$20,999,179.82        | \$27,506,417.65        | \$22,407,848.64        | \$117,716,645.66        |
| PHARMACY                    | \$9,283,525.25         | \$6,779,109.45         | \$6,744,604.98         | \$7,116,825.53         | \$6,477,043.47         | \$36,401,108.68         |
| UNIVERSITY COLLEGE          | \$56,440.00            | \$84,568.00            | \$85,160.00            | \$95,521.00            | \$96,550.00            | \$418,239.00            |
| UNIVERSITY LIBRARY          | \$7,625.00             | \$0.00                 | \$14,212.00            | \$0.00                 | \$0.00                 | \$21,837.00             |
| <b>Totals</b>               | <b>\$73,448,116.97</b> | <b>\$62,258,991.91</b> | <b>\$63,734,469.53</b> | <b>\$82,601,747.99</b> | <b>\$62,765,318.76</b> | <b>\$344,808,645.16</b> |



Table 3a. Awards received by departments within colleges FY06 through February FY10

| <u>College</u>                      | <u>FY06</u>           | <u>FY07</u>           | <u>FY08</u>            | <u>FY09</u>            | <u>FY10 YTD</u>       | <u>Totals</u>          |
|-------------------------------------|-----------------------|-----------------------|------------------------|------------------------|-----------------------|------------------------|
| <b>Arts and Sciences</b>            | <b>\$7,944,157.04</b> | <b>\$8,078,890.27</b> | <b>\$12,885,156.25</b> | <b>\$11,295,659.54</b> | <b>\$6,370,055.60</b> | <b>\$46,573,918.70</b> |
| ART                                 | \$2,470.00            | \$6,921.12            | \$384.66               | \$0.00                 | \$0.00                | \$9,775.78             |
| CANCER PREVENTION RESEARCH CTR      | \$3,153,686.51        | \$3,351,982.25        | \$5,075,381.00         | \$4,545,097.00         | \$2,965,152.89        | \$19,091,299.65        |
| CHEMISTRY                           | \$974,856.00          | \$896,017.74          | \$5,120,789.90         | \$3,128,244.50         | \$735,776.26          | \$10,855,684.40        |
| COMMUNICATION STUDIES               | \$119,951.40          | \$118,536.80          | \$119,566.00           | \$119,815.40           | \$0.00                | \$477,869.60           |
| COMPUTER SCIENCE/STATISTICS         | \$768,471.00          | \$1,079,665.06        | \$288,518.60           | \$1,043,436.00         | \$647,958.00          | \$3,828,048.66         |
| DEAN'S OFFICE                       | \$3,000.00            | \$0.00                | \$0.00                 | \$0.00                 | \$0.00                | \$3,000.00             |
| ECONOMICS                           | \$8,000.00            | \$0.00                | \$0.00                 | \$0.00                 | \$0.00                | \$8,000.00             |
| FEINSTEIN HUNGER CTR(DEAN'S OFFICE) | \$543,844.00          | \$686,724.00          | \$602,155.00           | \$670,619.00           | \$758,760.00          | \$3,262,102.00         |
| HISTORY                             | \$142,515.20          | \$56,000.00           | \$79,417.00            | \$39,978.00            | \$39,999.00           | \$357,909.20           |
| LANGUAGES                           | \$165,581.50          | \$227,331.25          | \$75,260.25            | \$664,203.34           | \$313,720.25          | \$1,446,096.59         |
| LIBRARY AND INFORMATION STUDIES     | \$0.00                | \$0.00                | \$20,496.40            | \$21,750.90            | \$22,064.40           | \$64,311.70            |
| MATHEMATICS                         | \$114,490.00          | \$0.00                | \$22,673.00            | \$0.00                 | \$0.00                | \$137,163.00           |
| PHYSICS                             | \$323,977.00          | \$431,913.00          | \$747,894.00           | \$800,864.00           | \$581,599.00          | \$2,886,247.00         |
| PSYCHOLOGY                          | \$1,429,030.43        | \$1,136,127.05        | \$373,320.44           | \$254,151.40           | \$266,331.20          | \$3,458,960.52         |
| SOCIOLOGY/ANTHROPOLOGY              | \$139,571.00          | \$75,922.00           | \$190,900.00           | \$7,500.00             | \$38,694.60           | \$452,587.60           |
| THEATRE                             | \$0.00                | \$11,750.00           | \$0.00                 | \$0.00                 | \$0.00                | \$11,750.00            |
| WOMEN'S STUDIES                     | \$54,713.00           | \$0.00                | \$168,400.00           | \$0.00                 | \$0.00                | \$223,113.00           |
| <b>Business Administration</b>      | <b>\$67,119.21</b>    | <b>\$0.00</b>         | <b>\$0.00</b>          | <b>\$10,211.60</b>     | <b>\$10,211.60</b>    | <b>\$87,542.41</b>     |
| ACCOUNTING                          | \$0.00                | \$0.00                | \$0.00                 | \$0.00                 | \$0.00                | \$0.00                 |
| DEAN'S OFFICE                       | \$3,368.21            | \$0.00                | \$0.00                 | \$0.00                 | \$0.00                | \$3,368.21             |
| MANAGEMENT                          | \$63,751.00           | \$0.00                | \$0.00                 | \$10,211.60            | \$10,211.60           | \$84,174.20            |

| <u>College</u>                       | <u>FY06</u>            | <u>FY07</u>            | <u>FY08</u>           | <u>FY09</u>            | <u>FY10 YTD</u>        | <u>Totals</u>          |
|--------------------------------------|------------------------|------------------------|-----------------------|------------------------|------------------------|------------------------|
| <b>Contiuing Education</b>           | <b>\$14,515.00</b>     | <b>\$0.00</b>          | <b>\$0.00</b>         | <b>\$0.00</b>          | <b>\$0.00</b>          | <b>\$14,515.00</b>     |
| LABOR RESEARCH CENTER                | \$14,515.00            | \$0.00                 | \$0.00                | NA                     | NA                     | \$14,515.00            |
| <b>Engineering</b>                   | <b>\$7,504,080.77</b>  | <b>\$4,744,073.66</b>  | <b>\$4,525,285.47</b> | <b>\$5,310,483.76</b>  | <b>\$6,458,038.50</b>  | <b>\$28,541,962.16</b> |
| CHEMICAL ENGINEERING                 | \$1,079,427.27         | \$1,370,759.22         | \$1,717,995.69        | \$1,243,131.06         | \$1,078,645.02         | \$6,489,958.26         |
| CIVIL/ENVIRONMENTAL ENGINEERING      | \$565,361.50           | \$352,797.00           | \$133,710.00          | \$801,188.00           | \$133,108.00           | \$1,986,164.50         |
| DEAN'S OFFICE                        | \$196,476.50           | \$91,969.00            | \$0.00                | \$0.00                 | \$0.00                 | \$288,445.50           |
| ELECTRICAL ENGINEERING               | \$780,106.10           | \$660,679.24           | \$577,515.00          | \$1,459,487.20         | \$2,186,464.00         | \$5,664,251.54         |
| INDUSTRIAL/MANUFACTURING EGR         | \$52,631.00            | \$256,086.00           | \$8,118.00            | \$20,019.00            | NA                     | \$336,854.00           |
| MECHANICAL & INDUSTRIAL SYS EGR      | NA                     | NA                     | NA                    | NA                     | \$840,438.00           | \$840,438.00           |
| MECHANICAL EGR/APPLIED MECHANICS     | \$3,915,998.50         | \$1,222,564.00         | \$1,466,078.75        | \$743,983.00           | NA                     | \$7,348,624.25         |
| OCEAN ENGINEERING                    | \$914,079.90           | \$789,219.20           | \$621,868.03          | \$1,042,675.50         | \$2,219,383.48         | \$5,587,226.11         |
| <b>Environment and Life Sciences</b> | <b>\$13,830,497.57</b> | <b>\$13,678,422.86</b> | <b>\$9,507,339.56</b> | <b>\$22,944,993.28</b> | <b>\$12,805,956.14</b> | <b>\$72,767,209.41</b> |
| BIOLOGICAL SCIENCES                  | \$765,814.00           | \$184,559.16           | \$805,390.40          | \$343,627.90           | \$754,535.70           | \$2,853,927.16         |
| CELL AND MOLECULAR BIOLOGY           | \$1,415,681.80         | \$683,903.41           | \$827,174.00          | \$1,478,458.55         | \$2,672,801.90         | \$7,078,019.66         |
| COMMUNITY PLANNING/AREA DEVEL        | \$1,512.00             | \$4,000.00             | \$5,000.00            | \$24,380.00            | \$0.00                 | \$34,892.00            |
| COOPERATIVE EXTENSION                | \$307,515.00           | \$163,088.00           | \$121,693.70          | \$355,807.50           | \$276,647.00           | \$1,224,751.20         |
| DEAN'S OFFICE                        | \$2,748,969.88         | \$2,430,677.48         | \$127,296.80          | \$6,420,744.40         | \$754,075.60           | \$12,481,764.16        |
| ENV & NAT RESOURCE ECONOMICS         | \$916,576.16           | \$690,729.76           | \$544,219.24          | \$892,138.90           | \$460,509.00           | \$3,504,173.06         |
| FISHERIES, ANIMAL & VET SCIENCE      | \$904,782.68           | \$3,628,840.72         | \$918,120.24          | \$587,588.40           | \$290,547.40           | \$6,329,879.44         |
| FOOD SCIENCE/NUTRITION               | \$1,293,698.00         | \$1,110,031.25         | \$1,992,011.59        | \$1,795,892.85         | \$1,852,715.20         | \$8,044,348.89         |
| GEOSCIENCE                           | \$371,017.57           | \$430,437.42           | \$557,322.73          | \$5,765,588.35         | \$92,556.90            | \$7,216,922.97         |
| MARINE AFFAIRS                       | \$672,805.64           | \$253,727.94           | \$262,509.28          | \$226,873.40           | \$51,226.00            | \$1,467,142.26         |
| NATURAL RESOURCES SCIENCE            | \$3,115,660.99         | \$2,387,194.25         | \$2,686,576.33        | \$4,115,165.88         | \$3,710,033.79         | \$16,014,631.24        |
| PLANT SCIENCE                        | \$1,316,463.85         | \$1,711,233.47         | \$660,025.25          | \$938,727.15           | \$1,890,307.65         | \$6,516,757.37         |

NA - Not Applicable (department did not exist or was in another college)

| <u>College</u>                    | <u>FY06</u>            | <u>FY07</u>            | <u>FY08</u>            | <u>FY09</u>            | <u>FY10 YTD</u>        | <u>Totals</u>           |
|-----------------------------------|------------------------|------------------------|------------------------|------------------------|------------------------|-------------------------|
| <b>Graduate School</b>            | <b>\$0.00</b>          | <b>\$0.00</b>          | <b>\$0.00</b>          | <b>\$125,718.00</b>    | <b>\$0.00</b>          | <b>\$125,718.00</b>     |
| <b>Human Science and Services</b> | <b>\$4,465,380.40</b>  | <b>\$6,394,476.43</b>  | <b>\$6,407,781.91</b>  | <b>\$2,751,536.90</b>  | <b>\$1,139,667.61</b>  | <b>\$21,158,843.25</b>  |
| COMMUNICATIVE DISORDERS           | \$308,815.00           | \$399,398.33           | \$312,469.66           | \$0.00                 | \$0.00                 | \$1,020,682.99          |
| DEAN'S OFFICE                     | \$568,430.00           | \$396,398.00           | \$588,558.00           | \$1,163,925.00         | \$231,454.81           | \$2,948,765.81          |
| EDUCATION                         | \$2,849,294.40         | \$4,513,903.60         | \$3,619,601.40         | \$1,029,867.80         | \$92,636.00            | \$12,105,303.20         |
| GERONTOLOGY                       | \$0.00                 | \$0.00                 | \$634,115.55           | \$142,102.00           | \$456,645.20           | \$1,232,862.75          |
| HUMAN DEV/COUNSEL/FAM STUDIES     | \$135,372.00           | \$337,842.00           | \$193,755.30           | \$273,540.10           | \$90,059.00            | \$1,030,568.40          |
| KINESIOLOGY                       | NA                     | NA                     | NA                     | NA                     | \$264,573.20           | \$264,573.20            |
| PHYS ED/HEALTH/RECREATION         | \$0.00                 | \$192,568.50           | \$0.00                 | \$142,102.00           | NA                     | \$334,670.50            |
| PHYSICAL THERAPY                  | \$497,240.00           | \$449,530.00           | \$1,059,282.00         | \$0.00                 | \$0.00                 | \$2,006,052.00          |
| TEXTILES/FASHION MERCHAND/DESIGN  | \$106,229.00           | \$104,836.00           | \$0.00                 | \$0.00                 | \$4,299.40             | \$215,364.40            |
| <b>Nursing</b>                    | <b>\$919,777.55</b>    | <b>\$835,971.48</b>    | <b>\$927,796.54</b>    | <b>\$1,075,832.30</b>  | <b>\$1,565,302.80</b>  | <b>\$5,324,680.67</b>   |
| <b>Oceanography</b>               | <b>\$26,282,651.39</b> | <b>\$20,520,548.16</b> | <b>\$20,999,179.82</b> | <b>\$27,506,417.65</b> | <b>\$22,407,848.64</b> | <b>\$117,716,645.66</b> |
| <b>Pharmacy</b>                   | <b>\$9,283,525.25</b>  | <b>\$6,779,109.45</b>  | <b>\$6,744,604.98</b>  | <b>\$7,116,825.53</b>  | <b>\$6,477,043.47</b>  | <b>\$36,401,108.68</b>  |
| BIOMEDICAL & PHARMACEUTICAL SCI   | \$7,749,483.25         | \$5,426,110.45         | \$5,672,398.18         | \$5,287,921.40         | \$4,069,104.00         | \$28,205,017.28         |
| CRIME LAB                         | \$609,100.00           | \$686,597.00           | \$701,464.00           | \$705,422.53           | \$812,676.00           | \$3,515,259.53          |
| DEAN'S OFFICE                     | \$450,000.00           | \$0.00                 | \$0.00                 | \$0.00                 | \$0.00                 | \$450,000.00            |
| PHARMACY PRACTICE                 | \$474,942.00           | \$666,402.00           | \$370,742.80           | \$1,123,481.60         | \$1,595,263.47         | \$4,230,831.87          |
| <b>University College</b>         | <b>\$56,440.00</b>     | <b>\$84,568.00</b>     | <b>\$85,160.00</b>     | <b>\$95,521.00</b>     | <b>\$96,550.00</b>     | <b>\$418,239.00</b>     |

NA - Not Applicable (department did not exist or was in another college)

| <u>College</u>     | <u>FY06</u> | <u>FY07</u> | <u>FY08</u> | <u>FY09</u> | <u>FY10 YTD</u> | <u>Totals</u> |
|--------------------|-------------|-------------|-------------|-------------|-----------------|---------------|
| University Library | \$7,625.00  | \$0.00      | \$14,212.00 | \$0.00      | \$0.00          | \$21,837.00   |

---

**Table 3b. Awards received by units within administrative divisions FY06 through February FY10**

| <u>Administrative Unit</u>                     | <u>FY06</u>           | <u>FY07</u>         | <u>FY08</u>           | <u>FY09</u>           | <u>FY10 YTD</u>       | <u>Totals</u>         |
|--|-----------------------|---------------------|-----------------------|-----------------------|-----------------------|-----------------------|
| <b>President's Office</b>                      | <b>\$1,883,412.00</b> | <b>\$356,399.00</b> | <b>\$1,328,095.20</b> | <b>\$1,915,830.58</b> | <b>\$1,218,685.00</b> | <b>\$6,702,421.78</b> |
| PRESIDENT'S OFFICE                             | \$0.00                | \$0.00              | \$4,320.00            | \$0.00                | \$0.00                | \$4,320.00            |
| TRANSPORTATION CENTER                          | \$1,883,412.00        | \$356,399.00        | \$1,323,775.20        | \$1,915,830.58        | \$1,218,685.00        | \$6,698,101.78        |
| <b>Provost</b>                                 | <b>\$0.00</b>         | <b>\$3,011.60</b>   | <b>\$22,500.00</b>    | <b>\$22,594.29</b>    | <b>\$371,817.00</b>   | <b>\$419,922.89</b>   |
| ADVANCE OFFICE                                 | \$0.00                | \$0.00              | \$22,500.00           | \$7,500.00            | \$0.00                | \$30,000.00           |
| LABOR RESEARCH CENTER                          | NA                    | NA                  | NA                    | \$15,094.29           | \$19,600.00           | \$34,694.29           |
| OFFICE OF INFORMATION SERVICES                 | \$0.00                | \$0.00              | \$0.00                | \$0.00                | \$0.00                | \$0.00                |
| PROVOST  | \$0.00                | \$3,011.60          | \$0.00                | \$0.00                | \$352,217.00          | \$355,228.60          |
| <b>VP, Administration</b>                      | <b>\$92,325.00</b>    | <b>\$0.00</b>       | <b>\$0.00</b>         | <b>\$1,931,783.00</b> | <b>\$352,217.00</b>   | <b>\$2,376,325.00</b> |
| POLICE   | \$92,325.00           | \$0.00              | \$0.00                | \$0.00                | \$0.00                | \$92,325.00           |
| VICE PRESIDENT FOR ADMINISTRATION              | \$0.00                | \$0.00              | \$0.00                | \$1,931,783.00        | \$352,217.00          | \$2,284,000.00        |
| <b>VP, Research &amp; Economic Development</b> | <b>\$495,407.50</b>   | <b>\$131,299.00</b> | <b>\$0.00</b>         | <b>\$0.00</b>         | <b>\$3,437,358.00</b> | <b>\$4,064,064.50</b> |
| NEAGEP   | \$131,958.00          | \$131,299.00        | \$0.00                | \$0.00                | \$0.00                | \$263,257.00          |
| VP, RES & ECONOMIC DEVELOPMENT                 | \$363,449.50          | \$0.00              | \$0.00                | \$0.00                | \$3,437,358.00        | \$3,800,807.50        |
| <b>VP, Student Affairs</b>                     | <b>\$601,203.29</b>   | <b>\$652,222.00</b> | <b>\$287,357.80</b>   | <b>\$498,340.56</b>   | <b>\$54,567.40</b>    | <b>\$2,093,691.05</b> |
| CAMPUS LIFE                                    | \$64,126.74           | \$47,106.00         | \$149,989.00          | \$0.00                | \$0.00                | \$261,221.74          |
| HEALTH SERVICES                                | \$0.00                | \$12,830.00         | \$0.00                | \$10,800.00           | \$0.00                | \$23,630.00           |
| STUDENT LIFE                                   | \$380,820.00          | \$592,286.00        | \$0.00                | \$179,630.19          | \$54,567.40           | \$1,207,303.59        |
| TALENT DEVELOPMENT                             | \$156,256.55          | \$0.00              | \$137,368.80          | \$307,910.37          | \$0.00                | \$601,535.72          |

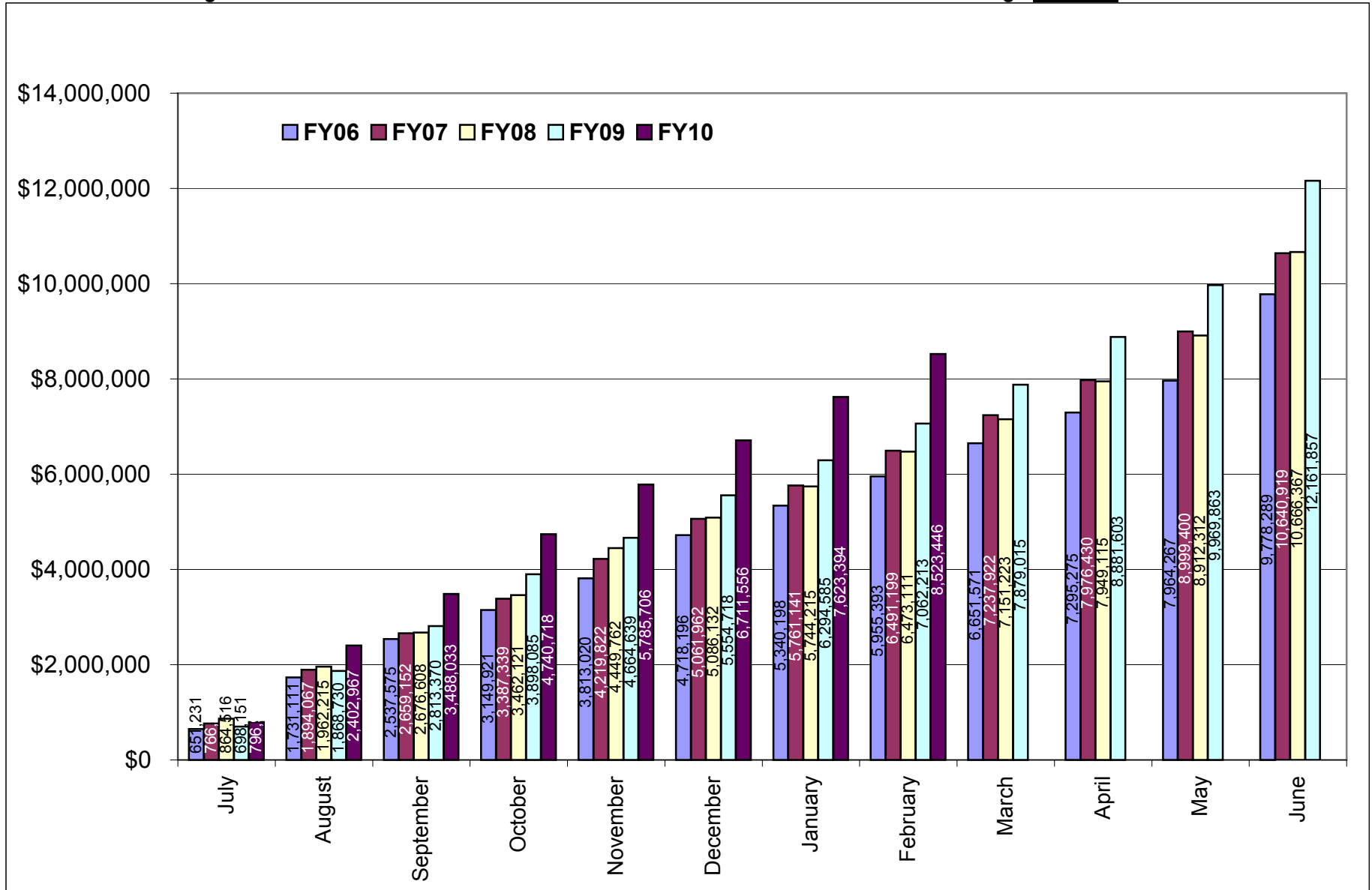
NA - Not Applicable (unit did not exist or was in another division)

**Table 4. Facilities and Administrative Funds received FY06 through February FY10**

| Month        | FY06                  |                       | FY07                   |                        |
|--------------|-----------------------|-----------------------|------------------------|------------------------|
|              | F&A Received          |                       | F&A Received           |                        |
|              | Amount                | Cum. Amt.             | Amount                 | Cum. Amt.              |
| July         | \$651,231.23          | \$651,231.23          | \$766,178.29           | \$766,178.29           |
| August       | \$1,079,879.61        | \$1,731,110.84        | \$1,127,889.08         | \$1,894,067.37         |
| September    | \$806,463.98          | \$2,537,574.82        | \$765,084.91           | \$2,659,152.28         |
| October      | \$612,346.12          | \$3,149,920.94        | \$728,186.96           | \$3,387,339.24         |
| November     | \$663,098.83          | \$3,813,019.77        | \$832,482.74           | \$4,219,821.98         |
| December     | \$905,176.47          | \$4,718,196.24        | \$842,140.46           | \$5,061,962.44         |
| January      | \$622,001.68          | \$5,340,197.92        | \$699,178.17           | \$5,761,140.61         |
| February     | \$615,194.64          | \$5,955,392.56        | \$730,058.81           | \$6,491,199.42         |
| March        | \$696,178.05          | \$6,651,570.61        | \$746,722.34           | \$7,237,921.76         |
| April        | \$643,704.37          | \$7,295,274.98        | \$738,507.99           | \$7,976,429.75         |
| May          | \$668,991.53          | \$7,964,266.51        | \$1,022,970.37         | \$8,999,400.12         |
| June         | \$1,814,022.15        | \$9,778,288.66        | \$1,641,518.88         | \$10,640,919.00        |
| <b>Total</b> | <b>\$9,778,288.66</b> | <b>\$9,778,288.66</b> | <b>\$10,640,919.00</b> | <b>\$10,640,919.00</b> |

| Month        | FY08                   |                        | FY09                   |                        | FY10                  |                       |
|--------------|------------------------|------------------------|------------------------|------------------------|-----------------------|-----------------------|
|              | F&A Received           |                        | F&A Received           |                        | F&A Received          |                       |
|              | Amount                 | Cum. Amt.              | Amount                 | Cum. Amt.              | Amount                | Cum. Amt.             |
| July         | \$864,515.94           | \$864,515.94           | \$698,151.33           | \$698,151.33           | \$796,999.29          | \$796,999.29          |
| August       | \$1,097,698.98         | \$1,962,214.92         | \$1,170,579.13         | \$1,868,730.46         | \$1,605,967.25        | \$2,402,966.54        |
| September    | \$714,393.48           | \$2,676,608.40         | \$944,639.40           | \$2,813,369.86         | \$1,085,066.61        | \$3,488,033.15        |
| October      | \$785,512.17           | \$3,462,120.57         | \$1,084,715.03         | \$3,898,084.89         | \$1,252,685.25        | \$4,740,718.40        |
| November     | \$987,641.06           | \$4,449,761.63         | \$766,554.38           | \$4,664,639.27         | \$1,044,988.01        | \$5,785,706.41        |
| December     | \$636,370.60           | \$5,086,132.23         | \$890,078.29           | \$5,554,717.56         | \$925,849.71          | \$6,711,556.12        |
| January      | \$658,082.99           | \$5,744,215.22         | \$739,866.95           | \$6,294,584.51         | \$911,837.51          | \$7,623,393.63        |
| February     | \$728,895.70           | \$6,473,110.92         | \$767,628.61           | \$7,062,213.12         | \$900,051.99          | \$8,523,445.62        |
| March        | \$678,111.96           | \$7,151,222.88         | \$816,801.58           | \$7,879,014.70         |                       |                       |
| April        | \$797,892.59           | \$7,949,115.47         | \$1,002,588.07         | \$8,881,602.77         |                       |                       |
| May          | \$963,196.95           | \$8,912,312.42         | \$1,088,259.87         | \$9,969,862.64         |                       |                       |
| June         | \$1,754,055.05         | \$10,666,367.47        | \$2,191,994.43         | \$12,161,857.07        |                       |                       |
| <b>Total</b> | <b>\$10,666,367.47</b> | <b>\$10,666,367.47</b> | <b>\$12,161,857.07</b> | <b>\$12,161,857.07</b> | <b>\$8,523,445.62</b> | <b>\$8,523,445.62</b> |

Figure 4. Cumulative totals of Facilities and Administrative Funds received FY06 through February FY10



**Table 5. Summary of Facilities and Administrative Funds received by administrative and academic units FY06 through February FY10**

| <b>Administrative</b>       | <b>FY06</b>           | <b>FY07</b>            | <b>FY08</b>            | <b>FY09</b>            | <b>FY10 YTD</b>       | <b>Totals</b>          |
|-----------------------------|-----------------------|------------------------|------------------------|------------------------|-----------------------|------------------------|
| PRESIDENT'S OFFICE          | \$240,419.92          | \$222,793.98           | \$195,586.48           | \$256,921.25           | \$144,495.88          | \$1,060,217.51         |
| PROVOST                     | (\$361.86)            | \$0.00                 | \$0.00                 | \$10,321.74            | \$885.48              | \$10,845.36            |
| VP, ADMINISTRATION          | \$0.00                | \$0.00                 | \$0.00                 | \$29,224.56            | \$34,377.03           | \$63,601.59            |
| VP, RESEARCH & ECONOMIC DEV | \$318,104.05          | \$230,359.60           | \$205,786.40           | \$57,603.29            | \$32,503.29           | \$844,356.63           |
| VP, STUDENT AFFAIRS         | \$151,603.14          | \$179,598.42           | \$97,513.85            | \$105,653.86           | \$60,762.17           | \$595,131.44           |
| <b>Academic</b>             |                       |                        |                        |                        |                       |                        |
| ARTS & SCIENCES             | \$1,258,906.19        | \$1,390,620.28         | \$1,606,108.04         | \$2,016,328.02         | \$1,457,574.83        | \$7,729,537.36         |
| BUSINESS ADMINISTRATION     | \$14,317.57           | \$92,017.59            | \$47,837.18            | \$80,815.65            | \$3,264.92            | \$238,252.91           |
| CONTINUING EDUCATION        | \$682.80              | \$117.83               | \$0.00                 | \$0.00                 | \$0.00                | \$800.63               |
| ENGINEERING                 | \$787,044.25          | \$1,019,260.75         | \$1,007,442.70         | \$1,256,356.71         | \$903,981.40          | \$4,974,085.81         |
| ENVIRONMENT & LIFE SCIENCES | \$1,539,601.57        | \$1,660,959.07         | \$1,812,703.38         | \$2,192,102.97         | \$1,578,283.61        | \$8,783,650.60         |
| GRADUATE SCHOOL             | \$0.00                | \$0.00                 | \$0.00                 | \$0.00                 | \$0.00                | \$0.00                 |
| HUMAN SCIENCE & SERVICES    | \$483,104.77          | \$638,694.52           | \$708,112.84           | \$556,655.93           | \$348,350.23          | \$2,734,918.29         |
| NURSING                     | \$68,818.51           | \$67,808.30            | \$61,174.29            | \$127,327.24           | \$10,324.24           | \$335,452.58           |
| OCEANOGRAPHY                | \$4,151,582.23        | \$4,257,758.61         | \$4,045,120.50         | \$4,192,315.78         | \$3,090,129.26        | \$19,736,906.38        |
| PHARMACY                    | \$761,461.31          | \$877,353.50           | \$874,875.66           | \$1,275,064.53         | \$852,102.16          | \$4,640,857.16         |
| UNIVERSITY COLLEGE          | \$3,004.21            | \$3,576.55             | \$4,106.15             | \$4,626.40             | \$2,914.05            | \$18,227.36            |
| UNIVERSITY LIBRARY          | \$0.00                | \$0.00                 | \$0.00                 | \$539.14               | \$3,497.07            | \$4,036.21             |
| <b>Totals</b>               | <b>\$9,778,288.66</b> | <b>\$10,640,919.00</b> | <b>\$10,666,367.47</b> | <b>\$12,161,857.07</b> | <b>\$8,523,445.62</b> | <b>\$51,770,877.82</b> |

Note: A negative amount reflects an adjustment to the previous fiscal year.



**Table 5a. Facilities and Administrative Funds received by departments within colleges FY06 through February FY10**

| <u>College</u>                          | <u>FY06</u>           | <u>FY07</u>           | <u>FY08</u>           | <u>FY09</u>           | <u>FY10 YTD</u>       | <u>Totals</u>         |
|---|-----------------------|-----------------------|-----------------------|-----------------------|-----------------------|-----------------------|
| <b>Arts and Sciences</b>                | <b>\$1,258,906.19</b> | <b>\$1,390,620.28</b> | <b>\$1,606,108.04</b> | <b>\$2,016,328.02</b> | <b>\$1,457,574.83</b> | <b>\$7,729,537.36</b> |
| ART                                     | \$60.00               | \$838.04              | \$808.60              | \$1,410.59            | \$54.58               | \$3,171.81            |
| CANCER PREVENTION RESEARCH CTR          | \$741,293.31          | \$769,490.00          | \$936,294.44          | \$1,191,620.62        | \$762,161.96          | \$4,400,860.33        |
| CHEMISTRY                               | \$105,692.17          | \$161,797.16          | \$224,026.38          | \$271,170.05          | \$305,994.97          | \$1,068,680.73        |
| COMMUNICATION STUDIES                   | \$4,714.76            | \$4,300.21            | \$1,915.43            | \$12,837.04           | \$5,981.56            | \$29,749.00           |
| COMPUTER SCIENCE/STATISTICS             | \$161,209.60          | \$136,886.07          | \$135,110.44          | \$142,988.54          | \$127,526.83          | \$703,721.48          |
| DEAN'S OFFICE                           | \$50,703.73           | \$93,809.29           | \$40,004.62           | \$0.00                | \$0.00                | \$184,517.64          |
| ECONOMICS                               | \$1,654.34            | \$2,253.51            | \$191.33              | \$0.00                | \$0.00                | \$4,099.18            |
| FEINSTEIN HUNGER CENTER (DEAN'S OFFICE) | \$0.00                | \$0.00                | \$64,704.49           | \$119,697.20          | \$68,475.23           | \$252,876.92          |
| HISTORY                                 | \$10,328.02           | \$24,808.97           | \$7,408.66            | \$14,811.26           | \$4,698.06            | \$62,054.97           |
| LANGUAGES                               | \$0.00                | \$2,598.55            | \$3,061.60            | \$67,887.69           | \$59,559.84           | \$133,107.68          |
| LIBRARY AND INFORMATION STUDIES         | \$2,941.42            | \$11,027.29           | \$10,085.71           | \$827.28              | \$0.00                | \$24,881.70           |
| MATHEMATICS                             | \$4,148.50            | \$13,685.84           | \$9,989.50            | \$0.00                | \$0.00                | \$27,823.84           |
| PHYSICS                                 | \$51,521.86           | \$52,607.96           | \$81,557.22           | \$138,494.67          | \$100,973.97          | \$425,155.68          |
| PSYCHOLOGY                              | \$101,213.20          | \$102,022.79          | \$80,776.04           | \$49,875.54           | \$20,714.08           | \$354,601.65          |
| SOCIOLOGY/ANTHROPOLOGY                  | \$7,099.83            | \$12,048.35           | \$9,920.76            | \$4,707.54            | \$1,433.75            | \$35,210.23           |
| WOMEN'S STUDIES                         | \$16,325.45           | \$2,446.25            | \$252.82              | \$0.00                | \$0.00                | \$19,024.52           |
| <b>Business Administration</b>          | <b>\$14,317.57</b>    | <b>\$92,017.59</b>    | <b>\$47,837.18</b>    | <b>\$80,815.65</b>    | <b>\$3,264.92</b>     | <b>\$238,252.91</b>   |
| DEAN'S OFFICE                           | \$0.00                | (\$0.05)              | \$0.00                | \$0.00                | \$0.00                | (\$0.05)              |
| FACULTY - INSTRUCTION                   | \$14,317.39           | \$92,017.64           | \$47,837.18           | \$80,815.65           | \$3,264.92            | \$238,252.78          |
| RESEARCH CTR FOR BUSINESS ECONOMICS     | \$0.18                | \$0.00                | \$0.00                | \$0.00                | \$0.00                | \$0.18                |

Note: A negative amount reflects an adjustment to the previous fiscal year.

| <u>College</u>                         | <u>FY06</u>           | <u>FY07</u>           | <u>FY08</u>           | <u>FY09</u>           | <u>FY10 YTD</u>       | <u>Totals</u>         |
|--|-----------------------|-----------------------|-----------------------|-----------------------|-----------------------|-----------------------|
| <b>Continuing Education</b>            | <b>\$682.80</b>       | <b>\$117.83</b>       | <b>\$0.00</b>         | <b>\$0.00</b>         | <b>\$0.00</b>         | <b>\$800.63</b>       |
| BIOTECH MANUFACTURING PROVIDENCE       | (\$1,643.40)          | \$0.00                | \$0.00                | \$0.00                | \$0.00                | (\$1,643.40)          |
| LABOR RESEARCH CENTER                  | \$2,326.20            | \$117.83              | \$0.00                | NA                    | NA                    | \$2,444.03            |
| <hr/>                                  |                       |                       |                       |                       |                       |                       |
| <b>Engineering</b>                     | <b>\$787,044.25</b>   | <b>\$1,019,260.75</b> | <b>\$1,007,442.70</b> | <b>\$1,256,356.71</b> | <b>\$903,981.40</b>   | <b>\$4,974,085.81</b> |
| CHEMICAL ENGINEERING                   | \$136,617.97          | \$203,950.58          | \$213,852.81          | \$287,771.39          | \$198,148.02          | \$1,040,340.77        |
| CIVIL/ENVIRONMENTAL ENGINEERING        | \$27,905.27           | \$38,581.43           | \$49,919.59           | \$52,401.77           | \$33,590.37           | \$202,398.43          |
| DEAN'S OFFICE                          | \$7,095.01            | \$1,037.02            | \$660.04              | \$0.00                | \$0.00                | \$8,792.07            |
| ELECTRICAL ENGINEERING                 | \$136,085.66          | \$169,750.81          | \$128,124.96          | \$146,950.95          | \$123,561.63          | \$704,474.01          |
| INDUSTRIAL/MANUFACTURING EGR           | \$63,026.29           | \$74,513.35           | \$67,699.10           | \$77,122.82           | NA                    | \$282,361.56          |
| MECHANICAL AND INDUSTRIAL SYSTEMS EGR  | NA                    | NA                    | NA                    | NA                    | \$423,688.55          | \$423,688.55          |
| MECHANICAL EGR/APPLIED MECHANICS       | \$253,944.40          | \$339,503.76          | \$377,660.34          | \$513,988.06          | NA                    | \$1,485,096.56        |
| OCEAN ENGINEERING                      | \$162,369.65          | \$191,923.80          | \$169,525.86          | \$178,121.72          | \$124,992.83          | \$826,933.86          |
| <hr/>                                  |                       |                       |                       |                       |                       |                       |
| <b>Environment &amp; Life Sciences</b> | <b>\$1,539,601.57</b> | <b>\$1,660,959.07</b> | <b>\$1,812,703.38</b> | <b>\$2,192,102.97</b> | <b>\$1,578,283.61</b> | <b>\$8,783,650.60</b> |
| BIOLOGICAL SCIENCES                    | \$77,336.25           | \$124,441.45          | \$133,502.71          | \$148,526.66          | \$86,973.72           | \$570,780.79          |
| CELL AND MOLECULAR BIOLOGY             | \$153,773.73          | \$199,669.09          | \$179,411.16          | \$269,949.88          | \$420,387.81          | \$1,223,191.67        |
| COMMUNITY PLANNING/AREA DEVEL          | \$5,214.95            | \$6,504.68            | \$14,574.67           | \$17,033.93           | \$5,202.40            | \$48,530.63           |
| COOPERATIVE EXTENSION                  | \$15,096.43           | \$16,479.70           | \$28,725.14           | \$24,629.56           | \$9,199.29            | \$94,130.12           |
| DEAN'S OFFICE                          | \$64,467.82           | \$76,131.76           | \$158,549.59          | \$240,746.08          | \$46,008.03           | \$585,903.28          |
| ENV & NAT RESOURCE ECONOMICS           | \$129,878.18          | \$132,986.53          | \$131,042.54          | \$105,626.63          | \$63,606.93           | \$563,140.81          |
| FISHERIES, ANIMAL & VET SCIENCE        | \$175,519.21          | \$159,958.57          | \$216,632.99          | \$209,572.99          | \$159,195.41          | \$920,879.17          |
| FOOD SCIENCE/NUTRITION                 | \$204,331.16          | \$196,090.36          | \$229,778.83          | \$239,792.86          | \$163,834.27          | \$1,033,827.48        |
| GEOSCIENCE                             | \$83,794.80           | \$59,995.68           | \$69,993.79           | \$204,787.30          | \$129,821.84          | \$548,393.41          |
| MARINE AFFAIRS                         | \$28,385.30           | \$46,240.28           | \$58,233.40           | \$42,732.60           | \$19,709.07           | \$195,300.65          |
| NATURAL RESOURCES SCIENCE              | \$423,269.57          | \$376,677.28          | \$390,050.86          | \$467,152.38          | \$391,425.77          | \$2,048,575.86        |
| PLANT SCIENCE                          | \$178,534.17          | \$265,783.69          | \$202,207.70          | \$221,552.10          | \$82,919.07           | \$950,996.73          |

NA - Not Applicable (department did not exist or was in another college)

Note: A negative amount reflects an adjustment to the previous fiscal year.

| <u>College</u>                         | <u>FY06</u>           | <u>FY07</u>           | <u>FY08</u>           | <u>FY09</u>           | <u>FY10 YTD</u>       | <u>Totals</u>          |
|--|-----------------------|-----------------------|-----------------------|-----------------------|-----------------------|------------------------|
| <b>Graduate School</b>                 | <b>\$0.00</b>         | <b>\$0.00</b>         | <b>\$0.00</b>         | <b>\$0.00</b>         | <b>\$0.00</b>         | <b>\$0.00</b>          |
| <b>Human Science &amp; Services</b>    | <b>\$483,104.77</b>   | <b>\$638,694.52</b>   | <b>\$708,112.84</b>   | <b>\$556,655.93</b>   | <b>\$348,350.23</b>   | <b>\$2,734,918.29</b>  |
| COMMUNICATIVE DISORDERS                | \$13,876.67           | \$81,483.63           | \$52,452.04           | \$9,254.68            | \$0.00                | \$157,067.02           |
| DEAN'S OFFICE                          | \$0.00                | \$0.00                | \$0.00                | \$0.00                | \$15,575.57           | \$15,575.57            |
| EDUCATION                              | \$277,429.80          | \$307,206.01          | \$317,565.45          | \$302,851.11          | \$177,539.93          | \$1,382,592.30         |
| EDUCATION & SOCIAL POLICY RESEARCH     | \$82,323.24           | \$82,676.54           | \$70,549.36           | \$31,916.31           | \$3,702.87            | \$271,168.32           |
| GERONTOLOGY                            | \$36,041.89           | \$69,483.11           | \$135,996.87          | \$130,657.12          | \$80,062.67           | \$452,241.66           |
| HUMAN DEV/COUNSEL/FAM STUDIES          | \$39,559.81           | \$17,628.46           | \$6,042.13            | \$12,273.25           | \$16,645.70           | \$92,149.35            |
| KINESIOLOGY                            | NA                    | NA                    | NA                    | NA                    | \$5,117.81            | \$5,117.81             |
| PHYS ED/HEALTH/RECREATION              | \$18,881.55           | \$13,758.82           | \$4,670.32            | \$6,850.47            | NA                    | \$44,161.16            |
| PHYSICAL THERAPY                       | (\$123.45)            | \$48,930.88           | \$108,764.97          | \$58,466.83           | \$37,040.12           | \$253,079.35           |
| TEACHER EDUCATION                      | \$128.93              | \$0.00                | \$0.00                | \$0.00                | \$0.00                | \$128.93               |
| TEXTILES/FASHION MERCHAND/DESIGN       | \$14,986.33           | \$17,527.07           | \$12,071.70           | \$4,386.16            | \$12,665.56           | \$61,636.82            |
| <b>Nursing</b>                         | <b>\$68,818.51</b>    | <b>\$67,808.30</b>    | <b>\$61,174.29</b>    | <b>\$127,327.24</b>   | <b>\$10,324.24</b>    | <b>\$335,452.58</b>    |
| <b>Oceanography</b>                    | <b>\$4,151,582.23</b> | <b>\$4,257,758.61</b> | <b>\$4,045,120.50</b> | <b>\$4,192,315.78</b> | <b>\$3,090,129.26</b> | <b>\$19,736,906.38</b> |
| <b>Pharmacy</b>                        | <b>\$761,461.31</b>   | <b>\$877,353.50</b>   | <b>\$874,875.66</b>   | <b>\$1,275,064.53</b> | <b>\$852,102.16</b>   | <b>\$4,640,857.16</b>  |
| APPLIED PHARMACEUTICAL SCIENCES        | \$242.44              | (\$242.44)            | NA                    | NA                    | NA                    | \$0.00                 |
| BIOMEDICAL AND PHARMACEUTICAL SCIENCES | \$701,738.36          | \$828,252.37          | \$816,361.91          | \$1,172,414.34        | \$755,881.43          | \$4,274,648.41         |
| BIOMEDICAL SCIENCES                    | \$74.10               | (\$74.10)             | NA                    | NA                    | NA                    | \$0.00                 |
| DEAN'S OFFICE                          | \$37,241.26           | \$35,276.89           | \$24,549.27           | \$19,332.93           | \$0.00                | \$116,400.35           |
| ELDERLY MEDICATION                     | (\$2.21)              | (\$72.32)             | NA                    | NA                    | NA                    | (\$74.53)              |
| PHARMACY PRACTICE                      | \$22,167.36           | \$14,213.10           | \$33,964.48           | \$83,317.26           | \$96,220.73           | \$249,882.93           |

NA - Not Applicable (department did not exist or was in another college)

Note: A negative amount reflects an adjustment to the previous fiscal year.

| <u>College</u>     | <u>FY06</u> | <u>FY07</u> | <u>FY08</u> | <u>FY09</u> | <u>FY10 YTD</u> | <u>Totals</u> |
|--------------------|-------------|-------------|-------------|-------------|-----------------|---------------|
| University College | \$3,004.21  | \$3,576.55  | \$4,106.15  | \$4,626.40  | \$2,914.05      | \$18,227.36   |
| University Library | \$0.00      | \$0.00      | \$0.00      | \$539.14    | \$3,497.07      | \$4,036.21    |

**Table 5b. Facilities and Administrative Funds received by units within administrative divisions FY06 through February FY10**

| <u>Administrative Unit</u>   | <u>FY06</u>         | <u>FY07</u>         | <u>FY08</u>         | <u>FY09</u>         | <u>FY10 YTD</u>     | <u>Totals</u>         |
|--|---------------------|---------------------|---------------------|---------------------|---------------------|-----------------------|
| <b>President's Office</b>  | <b>\$240,419.92</b> | <b>\$222,793.98</b> | <b>\$195,586.48</b> | <b>\$256,921.25</b> | <b>\$144,495.88</b> | <b>\$1,060,217.51</b> |
| PRESIDENT'S OFFICE   | \$0.00              | \$1.13              | \$0.00              | \$0.00              | \$0.00              | \$1.13                |
| TRANSPORTATION CENTER  | \$240,419.92        | \$222,792.85        | \$195,586.48        | \$256,921.25        | \$144,495.88        | \$1,060,216.38        |
| <b>Provost</b>   | <b>(\$361.86)</b>   | <b>\$0.00</b>       | <b>\$0.00</b>       | <b>\$10,321.74</b>  | <b>\$885.48</b>     | <b>\$10,845.36</b>    |
| ADVANCE OFFICE   | (\$361.86)          | \$0.00              | \$0.00              | \$8,685.44          | \$87.20             | \$8,410.78            |
| LABOR RESEARCH CENTER  | NA                  | NA                  | NA                  | \$1,636.30          | \$798.28            | \$2,434.58            |
| PROVOST  | \$0.00              | \$0.00              | \$0.00              | \$0.00              | \$0.00              | \$0.00                |
| <b>VP, Administration<br/>(includes Police)</b>                      | <b>\$0.00</b>       | <b>\$0.00</b>       | <b>\$0.00</b>       | <b>\$29,224.56</b>  | <b>\$34,377.03</b>  | <b>\$63,601.59</b>    |
| <b>VP, Research &amp; Economic Development<br/>(includes NEAGEP)</b> | <b>\$318,104.05</b> | <b>\$230,359.60</b> | <b>\$205,786.40</b> | <b>\$57,603.29</b>  | <b>\$32,503.29</b>  | <b>\$844,356.63</b>   |
| <b>VP, Student Affairs</b>   | <b>\$151,603.14</b> | <b>\$179,598.42</b> | <b>\$97,513.85</b>  | <b>\$105,653.86</b> | <b>\$60,762.17</b>  | <b>\$595,131.44</b>   |
| CAMPUS LIFE  | \$19,569.91         | \$12,408.49         | \$25,128.56         | \$22,585.53         | \$12,673.44         | \$92,365.93           |
| HEALTH SERVICES  | \$0.00              | \$0.00              | \$0.00              | \$0.00              | \$0.00              | \$0.00                |
| STUDENT LIFE   | \$131,987.98        | \$142,013.25        | \$39,429.93         | \$29,185.49         | \$20,969.29         | \$363,585.94          |
| TALENT DEVELOPMENT   | \$45.25             | \$25,176.68         | \$32,955.36         | \$53,882.84         | \$27,119.44         | \$139,179.57          |

NA - Not Applicable (unit did not exist or was in another division)

Note: A negative amount reflects an adjustment to the previous fiscal year.