

2009

# Division of Research and Economic Development Monthly Report for November 2009

URI Division of Research and Economic Development

Follow this and additional works at: [http://digitalcommons.uri.edu/researchecondev\\_reports](http://digitalcommons.uri.edu/researchecondev_reports)

---

## Recommended Citation

URI Division of Research and Economic Development, "Division of Research and Economic Development Monthly Report for November 2009" (2009). *Reports (Research and Economic Development)*. Paper 27.  
[http://digitalcommons.uri.edu/researchecondev\\_reports/27](http://digitalcommons.uri.edu/researchecondev_reports/27)

This Periodical is brought to you for free and open access by the Division of Research and Economic Development at DigitalCommons@URI. It has been accepted for inclusion in Reports (Research and Economic Development) by an authorized administrator of DigitalCommons@URI. For more information, please contact [digitalcommons@etal.uri.edu](mailto:digitalcommons@etal.uri.edu).

**Table 1. Proposals processed by the Office of Sponsored Projects Review FY06 through November FY10**

Month	FY06				FY07			
	Number		Amount Requested		Number		Amount Requested	
	Count	Cum. Ct.	Amount	Cum. Amt.	Count	Cum. Ct.	Amount	Cum. Amt.
July	46	46	\$7,514,515.80	\$7,514,515.80	47	47	\$20,603,130.99	\$20,603,130.99
August	67	113	\$19,291,514.26	\$26,806,030.06	47	94	\$16,827,319.64	\$37,430,450.63
September	36	149	\$17,398,035.21	\$44,204,065.27	37	131	\$13,452,282.90	\$50,882,733.53
October	70	219	\$32,289,956.96	\$76,494,022.23	78	209	\$21,421,348.77	\$72,304,082.30
November	44	263	\$12,379,412.94	\$88,873,435.17	52	261	\$12,236,742.00	\$84,540,824.30
December	37	300	\$11,624,742.10	\$100,498,177.27	39	300	\$9,375,521.40	\$93,916,345.70
January	58	358	\$26,391,464.30	\$126,889,641.57	56	356	\$15,832,150.81	\$109,748,496.51
February	60	418	\$16,648,336.00	\$143,537,977.57	68	424	\$41,778,787.00	\$151,527,283.51
March	53	471	\$14,082,010.15	\$157,619,987.72	57	481	\$24,295,050.10	\$175,822,333.61
April	43	514	\$5,937,081.51	\$163,557,069.23	36	517	\$5,363,201.08	\$181,185,534.69
May	65	579	\$23,262,190.18	\$186,819,259.41	68	585	\$25,343,205.37	\$206,528,740.06
June	55	634	\$13,874,399.99	\$200,693,659.40	75	660	\$27,241,525.21	\$233,770,265.27
<b>Total</b>	<b>634</b>	<b>634</b>	<b>\$200,693,659.40</b>	<b>\$200,693,659.40</b>	<b>660</b>	<b>660</b>	<b>\$233,770,265.27</b>	<b>\$233,770,265.27</b>

Month	FY08				FY09				FY10			
	Number		Amount Requested		Number		Amount Requested		Number		Amount Requested	
	Count	Cum. Ct.	Amount	Cum. Amt.	Count	Cum. Ct.	Amount	Cum. Amt.	Count	Cum. Ct.	Amount	Cum. Amt.
July	54	54	\$33,842,834.37	\$33,842,834.37	58	58	\$51,217,673.28	\$51,217,673.28	66	66	\$42,425,118.76	\$42,425,118.76
August	48	102	\$18,649,661.71	\$52,492,496.08	54	112	\$33,046,189.43	\$84,263,862.71	45	111	\$22,180,983.75	\$64,606,102.51
September	39	141	\$6,908,530.31	\$59,401,026.39	45	157	\$14,489,338.81	\$98,753,201.52	65	176	\$25,011,440.51	\$89,617,543.02
October	61	202	\$19,838,573.08	\$79,239,599.47	64	221	\$14,304,818.80	\$113,058,020.32	71	247	\$26,234,467.51	\$115,852,010.53
November	46	248	\$10,043,051.00	\$89,282,650.47	55	276	\$31,661,764.20	\$144,719,784.52	61	308	\$82,326,254.56	\$198,178,265.09
December	49	297	\$19,600,544.28	\$108,883,194.75	47	323	\$10,999,368.29	\$155,719,152.81				
January	53	350	\$14,342,315.04	\$123,225,509.79	43	366	\$56,837,864.00	\$212,557,016.81				
February	63	413	\$25,700,702.83	\$148,926,212.62	65	431	\$24,785,454.88	\$237,342,471.69				
March	35	448	\$11,825,803.96	\$160,752,016.58	52	483	\$18,120,178.56	\$255,462,650.25				
April	63	511	\$29,523,641.59	\$190,275,658.17	93	576	\$34,510,660.56	\$289,973,310.81				
May	63	574	\$23,450,049.82	\$213,725,707.99	86	662	\$62,914,486.43	\$352,887,797.24				
June	64	638	\$25,890,560.06	\$239,616,268.05	82	744	\$60,860,874.79	\$413,748,672.03				
<b>Total</b>	<b>638</b>	<b>638</b>	<b>\$239,616,268.05</b>	<b>\$239,616,268.05</b>	<b>744</b>	<b>744</b>	<b>\$413,748,672.03</b>	<b>\$413,748,672.03</b>	<b>308</b>	<b>308</b>	<b>\$198,178,265.09</b>	<b>\$198,178,265.09</b>

Figure 1a. Cumulative totals of numbers of proposals submitted FY06 through November FY10

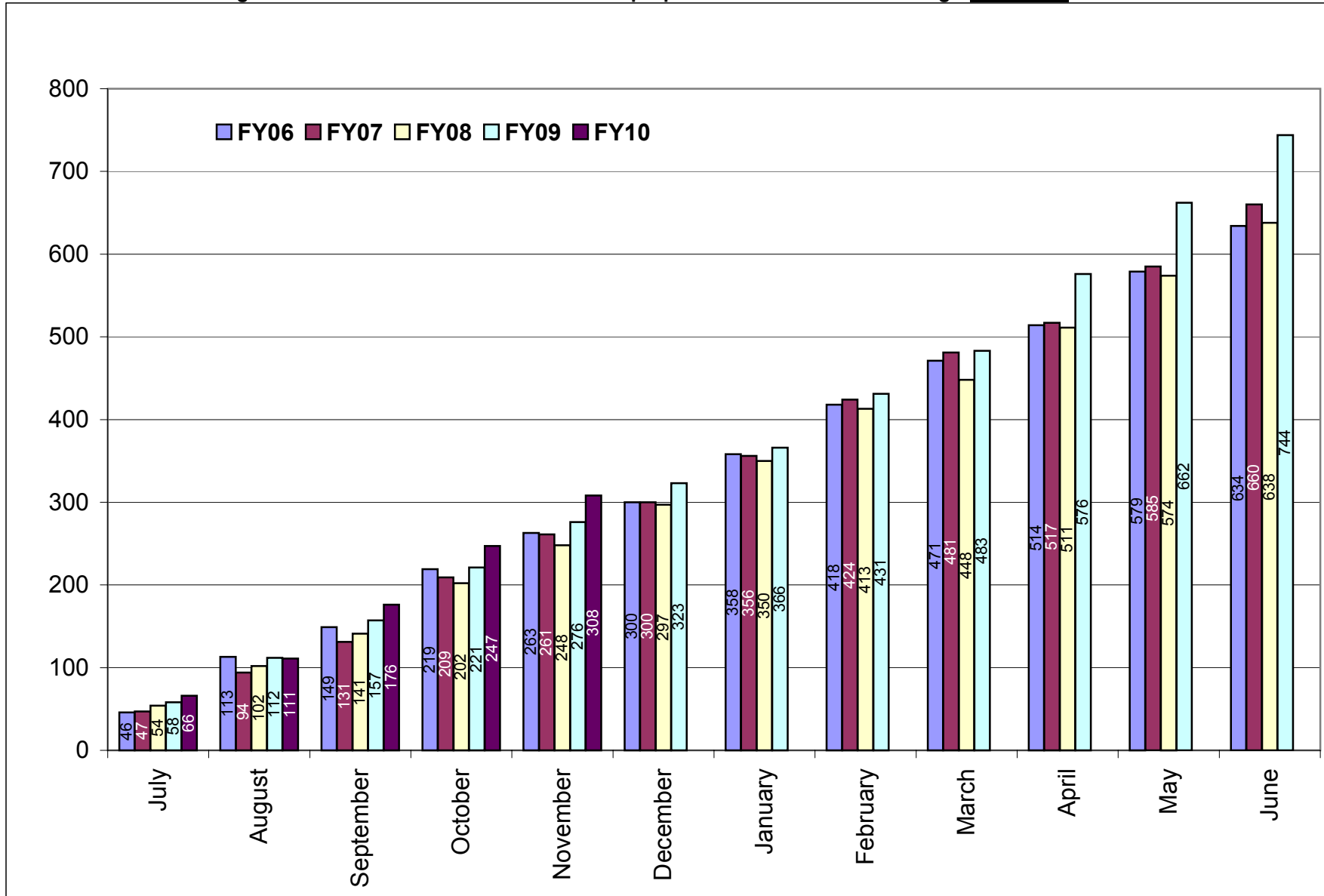
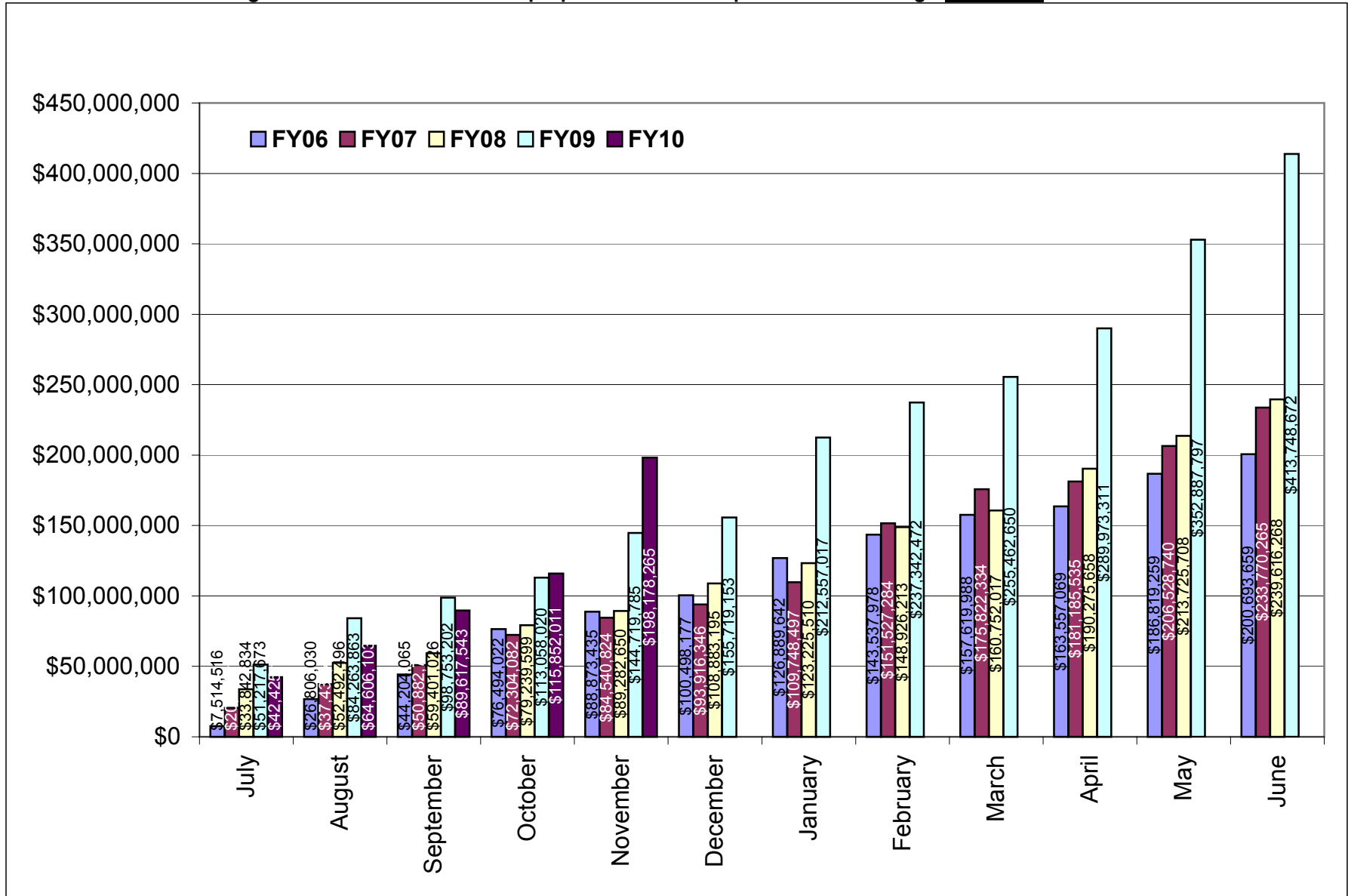


Figure 1b. Cumulative totals of proposal amounts requested FY06 through November FY10



**Table 2. Awards processed by the Office of Sponsored Projects Review FY06 through November FY10**

Month	FY06				FY07			
	Number		Amount Awarded		Number		Amount Awarded	
	Count	Cum. Ct.	Amount	Cum. Amt.	Count	Cum. Ct.	Amount	Cum. Amt.
July	36	36	\$8,184,631.73	\$8,184,631.73	44	44	\$3,630,455.25	\$3,630,455.25
August	51	87	\$8,884,672.35	\$17,069,304.08	43	87	\$4,738,246.38	\$8,368,701.63
September	46	133	\$5,812,274.19	\$22,881,578.27	31	118	\$7,322,287.00	\$15,690,988.63
October	53	186	\$11,310,965.90	\$34,192,544.17	47	165	\$7,808,245.88	\$23,499,234.51
November	37	223	\$6,414,477.00	\$40,607,021.17	35	200	\$3,765,622.92	\$27,264,857.43
December	22	245	\$3,041,531.55	\$43,648,552.72	28	228	\$5,077,394.86	\$32,342,252.29
January	35	280	\$2,476,893.00	\$46,125,445.72	27	255	\$2,070,155.00	\$34,412,407.29
February	21	301	\$3,290,780.00	\$49,416,225.72	29	284	\$3,346,724.45	\$37,759,131.74
March	34	335	\$7,789,588.25	\$57,205,813.97	39	323	\$3,982,337.70	\$41,741,469.44
April	31	366	\$3,782,080.00	\$60,987,893.97	29	352	\$4,053,313.60	\$45,794,783.04
May	36	402	\$5,050,148.27	\$66,038,042.24	31	383	\$7,489,552.71	\$53,284,335.75
June	38	440	\$7,410,074.73	\$73,448,116.97	54	437	\$8,974,656.16	\$62,258,991.91
<b>Total</b>	<b>440</b>	<b>440</b>	<b>\$73,448,116.97</b>	<b>\$73,448,116.97</b>	<b>437</b>	<b>437</b>	<b>\$62,258,991.91</b>	<b>\$62,258,991.91</b>

Month	FY08				FY09				FY10			
	Number		Amount Awarded		Number		Amount Awarded		Number		Amount Awarded	
	Count	Cum. Ct.	Amount	Cum. Amt.	Count	Cum. Ct.	Amount	Cum. Amt.	Count	Cum. Ct.	Amount	Cum. Amt.
July	20	20	\$2,909,307.42	\$2,909,307.42	24	24	\$2,141,955.29	\$2,141,955.29	28	28	\$8,427,538.60	\$8,427,538.60
August	44	64	\$7,784,335.67	\$10,693,643.09	46	70	\$8,247,877.00	\$10,389,832.29	44	72	\$14,362,225.21	\$22,789,763.81
September	51	115	\$5,958,412.96	\$16,652,056.05	52	122	\$18,410,083.68	\$28,799,915.97	70	142	\$12,469,481.84	\$35,259,245.65
October	47	162	\$6,965,281.97	\$23,617,338.02	39	161	\$3,249,691.41	\$32,049,607.38	46	188	\$7,674,128.20	\$42,933,373.85
November	25	187	\$2,868,646.00	\$26,485,984.02	27	188	\$5,407,192.48	\$37,456,799.86	27	215	\$2,676,714.00	\$45,610,087.85
December	29	216	\$2,706,955.70	\$29,192,939.72	33	221	\$2,800,282.84	\$40,257,082.70				
January	29	245	\$2,669,738.69	\$31,862,678.41	22	243	\$6,328,758.19	\$46,585,840.89				
February	24	269	\$2,253,601.01	\$34,116,279.42	30	273	\$4,286,284.20	\$50,872,125.09				
March	27	296	\$6,247,390.82	\$40,363,670.24	31	304	\$2,747,671.27	\$53,619,796.36				
April	42	338	\$5,655,452.97	\$46,019,123.21	39	343	\$5,819,654.03	\$59,439,450.39				
May	39	377	\$3,810,983.48	\$49,830,106.69	36	379	\$11,297,894.00	\$70,737,344.39				
June	57	434	\$13,904,362.84	\$63,734,469.53	70	449	\$11,864,403.60	\$82,601,747.99				
<b>Total</b>	<b>434</b>	<b>434</b>	<b>\$63,734,469.53</b>	<b>\$63,734,469.53</b>	<b>449</b>	<b>449</b>	<b>\$82,601,747.99</b>	<b>\$82,601,747.99</b>	<b>215</b>	<b>215</b>	<b>\$45,610,087.85</b>	<b>\$45,610,087.85</b>

Figure 2a. Cumulative totals of numbers of awards received FY06 through November FY10

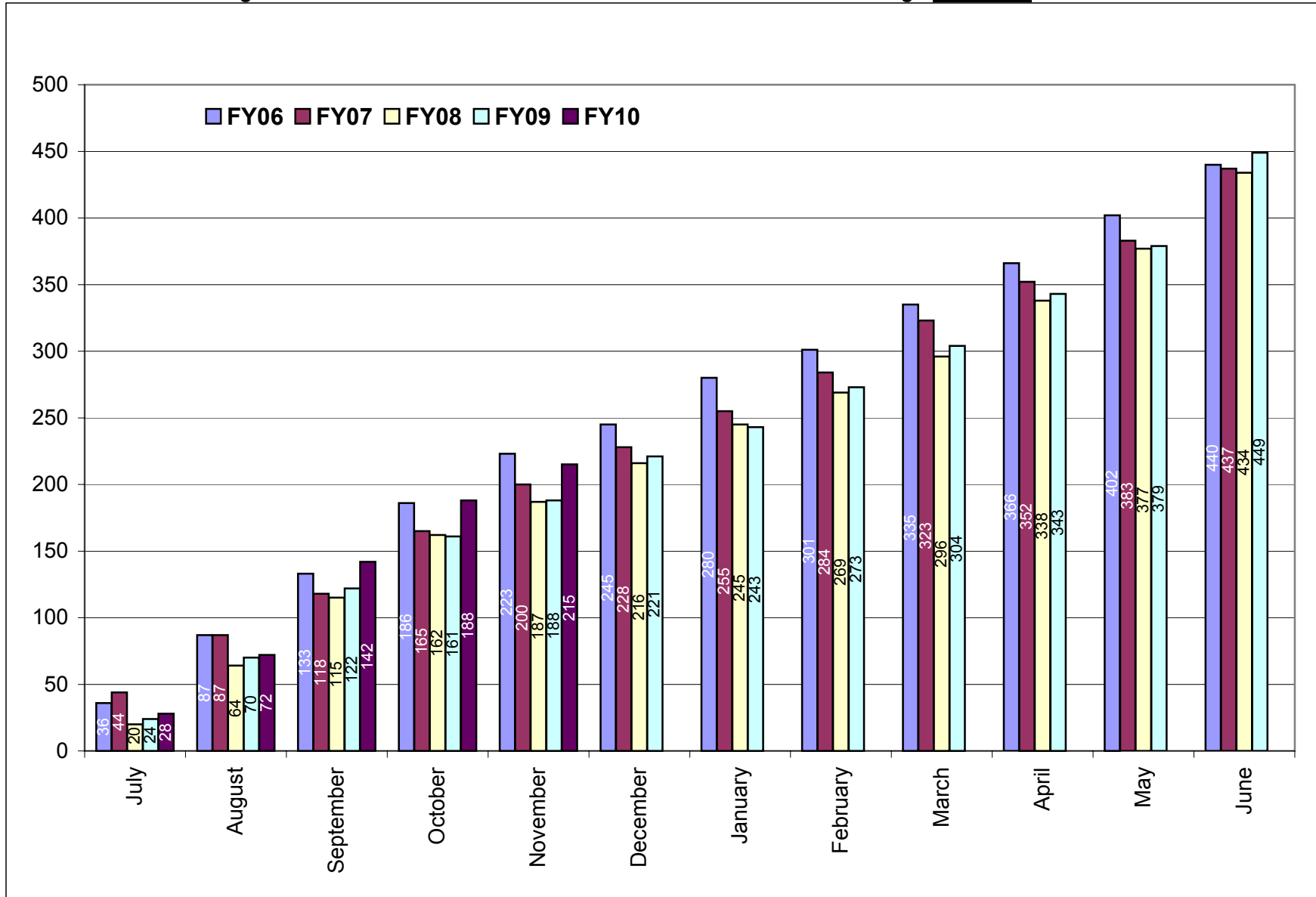
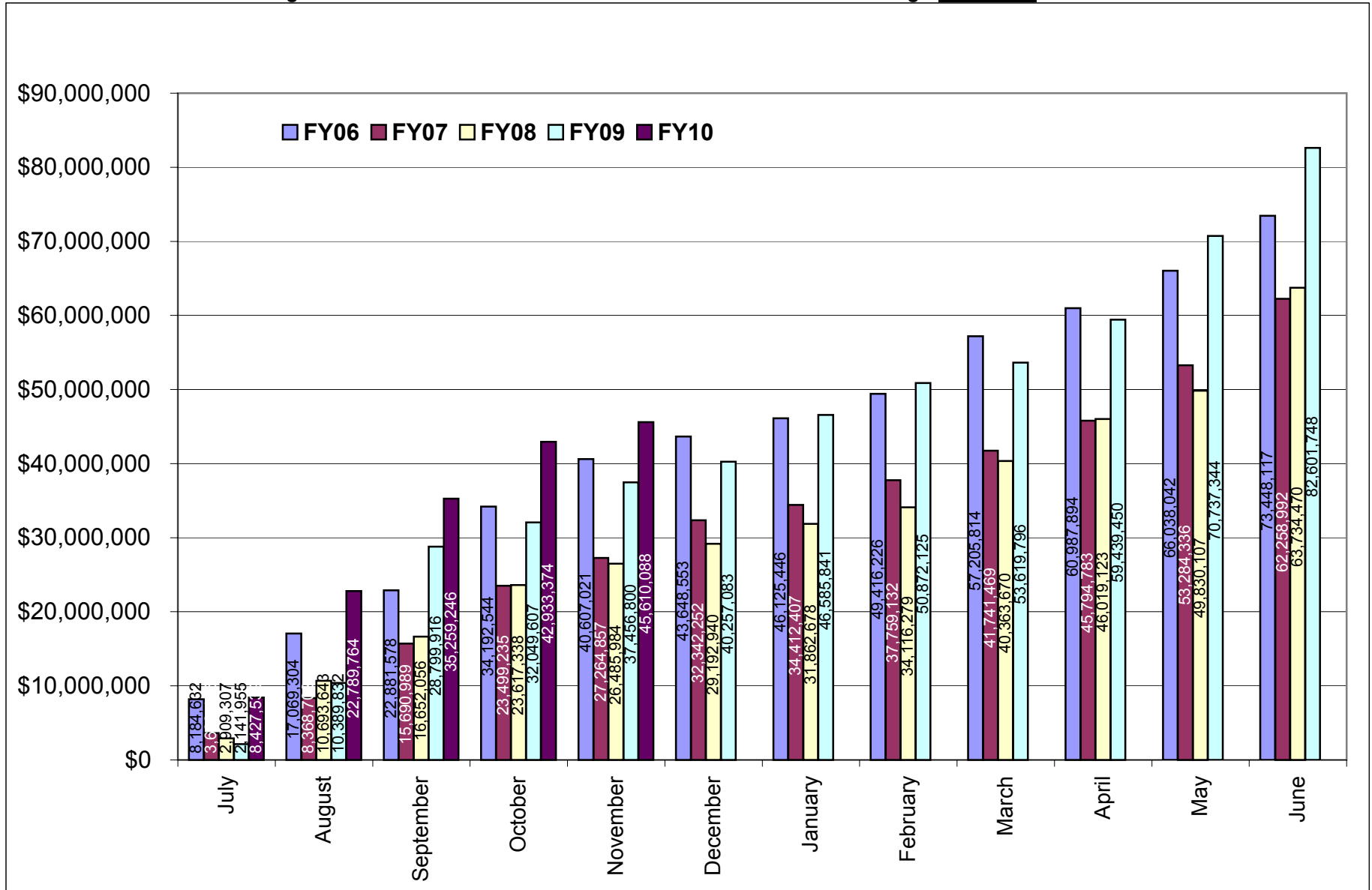


Figure 2b. Cumulative totals of award amounts received FY06 through November FY10



**Table 3. Summary of awards received by administrative and academic units FY06 through November FY10**

<b>Administrative</b>	<b>FY06</b>	<b>FY07</b>	<b>FY08</b>	<b>FY09</b>	<b>FY10 YTD</b>	<b>Totals</b>
PRESIDENT'S OFFICE	\$1,883,412.00	\$356,399.00	\$1,328,095.20	\$1,915,830.58	\$23,456.00	\$5,507,192.78
PROVOST	\$0.00	\$3,011.60	\$22,500.00	\$22,594.29	\$1,296,675.00	\$1,344,780.89
VP, ADMINISTRATION	\$92,325.00	\$0.00	\$0.00	\$1,931,783.00	\$352,217.00	\$2,376,325.00
VP, RESEARCH & ECON DEV	\$495,407.50	\$131,299.00	\$0.00	\$0.00	\$2,512,500.00	\$3,139,206.50
VP, STUDENT AFFAIRS	\$601,203.29	\$652,222.00	\$287,357.80	\$498,340.56	\$54,567.40	\$2,093,691.05
<b>Academic</b>						
ARTS & SCIENCES	\$7,944,157.04	\$8,078,890.27	\$12,885,156.25	\$11,295,659.54	\$3,644,716.14	\$43,848,579.24
BUSINESS ADMINISTRATION	\$67,119.21	\$0.00	\$0.00	\$10,211.60	\$10,211.60	\$87,542.41
CONTINUING EDUCATION	\$14,515.00	\$0.00	\$0.00	\$0.00	\$0.00	\$14,515.00
ENGINEERING	\$7,504,080.77	\$4,744,073.66	\$4,525,285.47	\$5,310,483.76	\$5,186,872.83	\$27,270,796.49
ENVIRONMENT & LIFE SCIENCES	\$13,830,497.57	\$13,678,422.86	\$9,507,339.56	\$22,944,993.28	\$10,055,694.14	\$70,016,947.41
GRADUATE SCHOOL	\$0.00	\$0.00	\$0.00	\$125,718.00	\$0.00	\$125,718.00
HUMAN SCIENCE & SERVICES	\$4,465,380.40	\$6,394,476.43	\$6,407,781.91	\$2,751,536.90	\$1,079,667.61	\$21,098,843.25
NURSING	\$919,777.55	\$835,971.48	\$927,796.54	\$1,075,832.30	\$1,161,618.80	\$4,920,996.67
OCEANOGRAPHY	\$26,282,651.39	\$20,520,548.16	\$20,999,179.82	\$27,506,417.65	\$15,844,141.49	\$111,152,938.51
PHARMACY	\$9,283,525.25	\$6,779,109.45	\$6,744,604.98	\$7,116,825.53	\$4,291,199.84	\$34,215,265.05
UNIVERSITY COLLEGE	\$56,440.00	\$84,568.00	\$85,160.00	\$95,521.00	\$96,550.00	\$418,239.00
UNIVERSITY LIBRARY	\$7,625.00	\$0.00	\$14,212.00	\$0.00	\$0.00	\$21,837.00
<b>Totals</b>	<b>\$73,448,116.97</b>	<b>\$62,258,991.91</b>	<b>\$63,734,469.53</b>	<b>\$82,601,747.99</b>	<b>\$45,610,087.85</b>	<b>\$327,653,414.25</b>



Table 3a. Awards received by departments within colleges FY06 through November FY10

<u>College</u>	<u>FY06</u>	<u>FY07</u>	<u>FY08</u>	<u>FY09</u>	<u>FY10 YTD</u>	<u>Totals</u>
<b>Arts and Sciences</b>	<b>\$7,944,157.04</b>	<b>\$8,078,890.27</b>	<b>\$12,885,156.25</b>	<b>\$11,295,659.54</b>	<b>\$3,644,716.14</b>	<b>\$43,848,579.24</b>
ART	\$2,470.00	\$6,921.12	\$384.66	\$0.00	\$0.00	\$9,775.78
CANCER PREVENTION RESEARCH CTR	\$3,153,686.51	\$3,351,982.25	\$5,075,381.00	\$4,545,097.00	\$1,555,908.89	\$17,682,055.65
CHEMISTRY	\$974,856.00	\$896,017.74	\$5,120,789.90	\$3,128,244.50	\$198,391.00	\$10,318,299.14
COMMUNICATION STUDIES	\$119,951.40	\$118,536.80	\$119,566.00	\$119,815.40	\$0.00	\$477,869.60
COMPUTER SCIENCE/STATISTICS	\$768,471.00	\$1,079,665.06	\$288,518.60	\$1,043,436.00	\$657,958.00	\$3,838,048.66
DEAN'S OFFICE	\$3,000.00	\$0.00	\$0.00	\$0.00	\$0.00	\$3,000.00
ECONOMICS	\$8,000.00	\$0.00	\$0.00	\$0.00	\$0.00	\$8,000.00
FEINSTEIN HUNGER CTR(DEAN'S OFFICE)	\$543,844.00	\$686,724.00	\$602,155.00	\$670,619.00	\$0.00	\$2,503,342.00
HISTORY	\$142,515.20	\$56,000.00	\$79,417.00	\$39,978.00	\$39,999.00	\$357,909.20
LANGUAGES	\$165,581.50	\$227,331.25	\$75,260.25	\$664,203.34	\$313,720.25	\$1,446,096.59
LIBRARY AND INFORMATION STUDIES	\$0.00	\$0.00	\$20,496.40	\$21,750.90	\$22,064.40	\$64,311.70
MATHEMATICS	\$114,490.00	\$0.00	\$22,673.00	\$0.00	\$0.00	\$137,163.00
PHYSICS	\$323,977.00	\$431,913.00	\$747,894.00	\$800,864.00	\$581,599.00	\$2,886,247.00
PSYCHOLOGY	\$1,429,030.43	\$1,136,127.05	\$373,320.44	\$254,151.40	\$236,381.00	\$3,429,010.32
SOCIOLOGY/ANTHROPOLOGY	\$139,571.00	\$75,922.00	\$190,900.00	\$7,500.00	\$38,694.60	\$452,587.60
THEATRE	\$0.00	\$11,750.00	\$0.00	\$0.00	\$0.00	\$11,750.00
WOMEN'S STUDIES	\$54,713.00	\$0.00	\$168,400.00	\$0.00	\$0.00	\$223,113.00
<b>Business Administration</b>	<b>\$67,119.21</b>	<b>\$0.00</b>	<b>\$0.00</b>	<b>\$10,211.60</b>	<b>\$10,211.60</b>	<b>\$87,542.41</b>
ACCOUNTING	\$0.00	\$0.00	\$0.00	\$0.00	\$0.00	\$0.00
DEAN'S OFFICE	\$3,368.21	\$0.00	\$0.00	\$0.00	\$0.00	\$3,368.21
MANAGEMENT	\$63,751.00	\$0.00	\$0.00	\$10,211.60	\$10,211.60	\$84,174.20

<u>College</u>	<u>FY06</u>	<u>FY07</u>	<u>FY08</u>	<u>FY09</u>	<u>FY10 YTD</u>	<u>Totals</u>
<b>Contiuing Education</b>	<b>\$14,515.00</b>	<b>\$0.00</b>	<b>\$0.00</b>	<b>\$0.00</b>	<b>\$0.00</b>	<b>\$14,515.00</b>
LABOR RESEARCH CENTER	\$14,515.00	\$0.00	\$0.00	NA	NA	\$14,515.00
<b>Engineering</b>	<b>\$7,504,080.77</b>	<b>\$4,744,073.66</b>	<b>\$4,525,285.47</b>	<b>\$5,310,483.76</b>	<b>\$5,186,872.83</b>	<b>\$27,270,796.49</b>
CHEMICAL ENGINEERING	\$1,079,427.27	\$1,370,759.22	\$1,717,995.69	\$1,243,131.06	\$809,244.25	\$6,220,557.49
CIVIL/ENVIRONMENTAL ENGINEERING	\$565,361.50	\$352,797.00	\$133,710.00	\$801,188.00	\$67,500.00	\$1,920,556.50
DEAN'S OFFICE	\$196,476.50	\$91,969.00	\$0.00	\$0.00	\$0.00	\$288,445.50
ELECTRICAL ENGINEERING	\$780,106.10	\$660,679.24	\$577,515.00	\$1,459,487.20	\$1,886,464.00	\$5,364,251.54
INDUSTRIAL/MANUFACTURING EGR	\$52,631.00	\$256,086.00	\$8,118.00	\$20,019.00	NA	\$336,854.00
MECHANICAL & INDUSTRIAL SYS EGR	NA	NA	NA	NA	\$560,630.10	\$560,630.10
MECHANICAL EGR/APPLIED MECHANICS	\$3,915,998.50	\$1,222,564.00	\$1,466,078.75	\$743,983.00	NA	\$7,348,624.25
OCEAN ENGINEERING	\$914,079.90	\$789,219.20	\$621,868.03	\$1,042,675.50	\$1,863,034.48	\$5,230,877.11
<b>Environment and Life Sciences</b>	<b>\$13,830,497.57</b>	<b>\$13,678,422.86</b>	<b>\$9,507,339.56</b>	<b>\$22,944,993.28</b>	<b>\$10,055,694.14</b>	<b>\$70,016,947.41</b>
BIOLOGICAL SCIENCES	\$765,814.00	\$184,559.16	\$805,390.40	\$343,627.90	\$654,003.70	\$2,753,395.16
CELL AND MOLECULAR BIOLOGY	\$1,415,681.80	\$683,903.41	\$827,174.00	\$1,478,458.55	\$2,672,801.90	\$7,078,019.66
COMMUNITY PLANNING/AREA DEVEL	\$1,512.00	\$4,000.00	\$5,000.00	\$24,380.00	\$0.00	\$34,892.00
COOPERATIVE EXTENSION	\$307,515.00	\$163,088.00	\$121,693.70	\$355,807.50	\$246,953.00	\$1,195,057.20
DEAN'S OFFICE	\$2,748,969.88	\$2,430,677.48	\$127,296.80	\$6,420,744.40	\$448,896.60	\$12,176,585.16
ENV & NAT RESOURCE ECONOMICS	\$916,576.16	\$690,729.76	\$544,219.24	\$892,138.90	\$100,248.00	\$3,143,912.06
FISHERIES, ANIMAL & VET SCIENCE	\$904,782.68	\$3,628,840.72	\$918,120.24	\$587,588.40	\$208,066.40	\$6,247,398.44
FOOD SCIENCE/NUTRITION	\$1,293,698.00	\$1,110,031.25	\$1,992,011.59	\$1,795,892.85	\$579,913.20	\$6,771,546.89
GEOSCIENCE	\$371,017.57	\$430,437.42	\$557,322.73	\$5,765,588.35	\$92,556.90	\$7,216,922.97
MARINE AFFAIRS	\$672,805.64	\$253,727.94	\$262,509.28	\$226,873.40	\$44,671.00	\$1,460,587.26
NATURAL RESOURCES SCIENCE	\$3,115,660.99	\$2,387,194.25	\$2,686,576.33	\$4,115,165.88	\$3,298,096.79	\$15,602,694.24
PLANT SCIENCE	\$1,316,463.85	\$1,711,233.47	\$660,025.25	\$938,727.15	\$1,709,486.65	\$6,335,936.37

NA - Not Applicable (department did not exist or was in another college)

<u>College</u>	<u>FY06</u>	<u>FY07</u>	<u>FY08</u>	<u>FY09</u>	<u>FY10 YTD</u>	<u>Totals</u>
<b>Graduate School</b>	<b>\$0.00</b>	<b>\$0.00</b>	<b>\$0.00</b>	<b>\$125,718.00</b>	<b>\$0.00</b>	<b>\$125,718.00</b>
<b>Human Science and Services</b>	<b>\$4,465,380.40</b>	<b>\$6,394,476.43</b>	<b>\$6,407,781.91</b>	<b>\$2,751,536.90</b>	<b>\$1,079,667.61</b>	<b>\$21,098,843.25</b>
COMMUNICATIVE DISORDERS	\$308,815.00	\$399,398.33	\$312,469.66	\$0.00	\$0.00	\$1,020,682.99
DEAN'S OFFICE	\$568,430.00	\$396,398.00	\$588,558.00	\$1,163,925.00	\$231,454.81	\$2,948,765.81
EDUCATION	\$2,849,294.40	\$4,513,903.60	\$3,619,601.40	\$1,029,867.80	\$32,636.00	\$12,045,303.20
GERONTOLOGY	\$0.00	\$0.00	\$634,115.55	\$142,102.00	\$456,645.20	\$1,232,862.75
HUMAN DEV/COUNSEL/FAM STUDIES	\$135,372.00	\$337,842.00	\$193,755.30	\$273,540.10	\$90,059.00	\$1,030,568.40
KINESIOLOGY	NA	NA	NA	NA	\$264,573.20	\$264,573.20
PHYS ED/HEALTH/RECREATION	\$0.00	\$192,568.50	\$0.00	\$142,102.00	NA	\$334,670.50
PHYSICAL THERAPY	\$497,240.00	\$449,530.00	\$1,059,282.00	\$0.00	\$0.00	\$2,006,052.00
TEXTILES/FASHION MERCHAND/DESIGN	\$106,229.00	\$104,836.00	\$0.00	\$0.00	\$4,299.40	\$215,364.40
<b>Nursing</b>	<b>\$919,777.55</b>	<b>\$835,971.48</b>	<b>\$927,796.54</b>	<b>\$1,075,832.30</b>	<b>\$1,161,618.80</b>	<b>\$4,920,996.67</b>
<b>Oceanography</b>	<b>\$26,282,651.39</b>	<b>\$20,520,548.16</b>	<b>\$20,999,179.82</b>	<b>\$27,506,417.65</b>	<b>\$15,844,141.49</b>	<b>\$111,152,938.51</b>
<b>Pharmacy</b>	<b>\$9,283,525.25</b>	<b>\$6,779,109.45</b>	<b>\$6,744,604.98</b>	<b>\$7,116,825.53</b>	<b>\$4,291,199.84</b>	<b>\$34,215,265.05</b>
BIOMEDICAL & PHARMACEUTICAL SCI	\$7,749,483.25	\$5,426,110.45	\$5,672,398.18	\$5,287,921.40	\$2,669,320.00	\$26,805,233.28
CRIME LAB	\$609,100.00	\$686,597.00	\$701,464.00	\$705,422.53	\$812,676.00	\$3,515,259.53
DEAN'S OFFICE	\$450,000.00	\$0.00	\$0.00	\$0.00	\$0.00	\$450,000.00
PHARMACY PRACTICE	\$474,942.00	\$666,402.00	\$370,742.80	\$1,123,481.60	\$809,203.84	\$3,444,772.24
<b>University College</b>	<b>\$56,440.00</b>	<b>\$84,568.00</b>	<b>\$85,160.00</b>	<b>\$95,521.00</b>	<b>\$96,550.00</b>	<b>\$418,239.00</b>

NA - Not Applicable (department did not exist or was in another college)

<u>College</u>	<u>FY06</u>	<u>FY07</u>	<u>FY08</u>	<u>FY09</u>	<u>FY10 YTD</u>	<u>Totals</u>
University Library	\$7,625.00	\$0.00	\$14,212.00	\$0.00	\$0.00	\$21,837.00

---

**Table 3b. Awards received by units within administrative divisions FY06 through November FY10**

<u>Administrative Unit</u>	<u>FY06</u>	<u>FY07</u>	<u>FY08</u>	<u>FY09</u>	<u>FY10 YTD</u>	<u>Totals</u>
<b>President's Office</b>	<b>\$1,883,412.00</b>	<b>\$356,399.00</b>	<b>\$1,328,095.20</b>	<b>\$1,915,830.58</b>	<b>\$23,456.00</b>	<b>\$5,507,192.78</b>
PRESIDENT'S OFFICE	\$0.00	\$0.00	\$4,320.00	\$0.00	\$0.00	\$4,320.00
TRANSPORTATION CENTER	\$1,883,412.00	\$356,399.00	\$1,323,775.20	\$1,915,830.58	\$23,456.00	\$5,502,872.78
<b>Provost</b>	<b>\$0.00</b>	<b>\$3,011.60</b>	<b>\$22,500.00</b>	<b>\$22,594.29</b>	<b>\$1,296,675.00</b>	<b>\$1,344,780.89</b>
ADVANCE OFFICE	\$0.00	\$0.00	\$22,500.00	\$7,500.00	\$0.00	\$30,000.00
LABOR RESEARCH CENTER	NA	NA	NA	\$15,094.29	\$19,600.00	\$34,694.29
OFFICE OF INFORMATION SERVICES	\$0.00	\$0.00	\$0.00	\$0.00	\$924,858.00	\$924,858.00
PROVOST	\$0.00	\$3,011.60	\$0.00	\$0.00	\$352,217.00	\$355,228.60
<b>VP, Administration</b>	<b>\$92,325.00</b>	<b>\$0.00</b>	<b>\$0.00</b>	<b>\$1,931,783.00</b>	<b>\$352,217.00</b>	<b>\$2,376,325.00</b>
POLICE	\$92,325.00	\$0.00	\$0.00	\$0.00	\$0.00	\$92,325.00
VICE PRESIDENT FOR ADMINISTRATION	\$0.00	\$0.00	\$0.00	\$1,931,783.00	\$352,217.00	\$2,284,000.00
<b>VP, Research &amp; Economic Development</b>	<b>\$495,407.50</b>	<b>\$131,299.00</b>	<b>\$0.00</b>	<b>\$0.00</b>	<b>\$2,512,500.00</b>	<b>\$3,139,206.50</b>
NEAGEP	\$131,958.00	\$131,299.00	\$0.00	\$0.00	\$0.00	\$263,257.00
VP, RES & ECONOMIC DEVELOPMENT	\$363,449.50	\$0.00	\$0.00	\$0.00	\$2,512,500.00	\$2,875,949.50
<b>VP, Student Affairs</b>	<b>\$601,203.29</b>	<b>\$652,222.00</b>	<b>\$287,357.80</b>	<b>\$498,340.56</b>	<b>\$54,567.40</b>	<b>\$2,093,691.05</b>
CAMPUS LIFE	\$64,126.74	\$47,106.00	\$149,989.00	\$0.00	\$0.00	\$261,221.74
HEALTH SERVICES	\$0.00	\$12,830.00	\$0.00	\$10,800.00	\$0.00	\$23,630.00
STUDENT LIFE	\$380,820.00	\$592,286.00	\$0.00	\$179,630.19	\$54,567.40	\$1,207,303.59
TALENT DEVELOPMENT	\$156,256.55	\$0.00	\$137,368.80	\$307,910.37	\$0.00	\$601,535.72

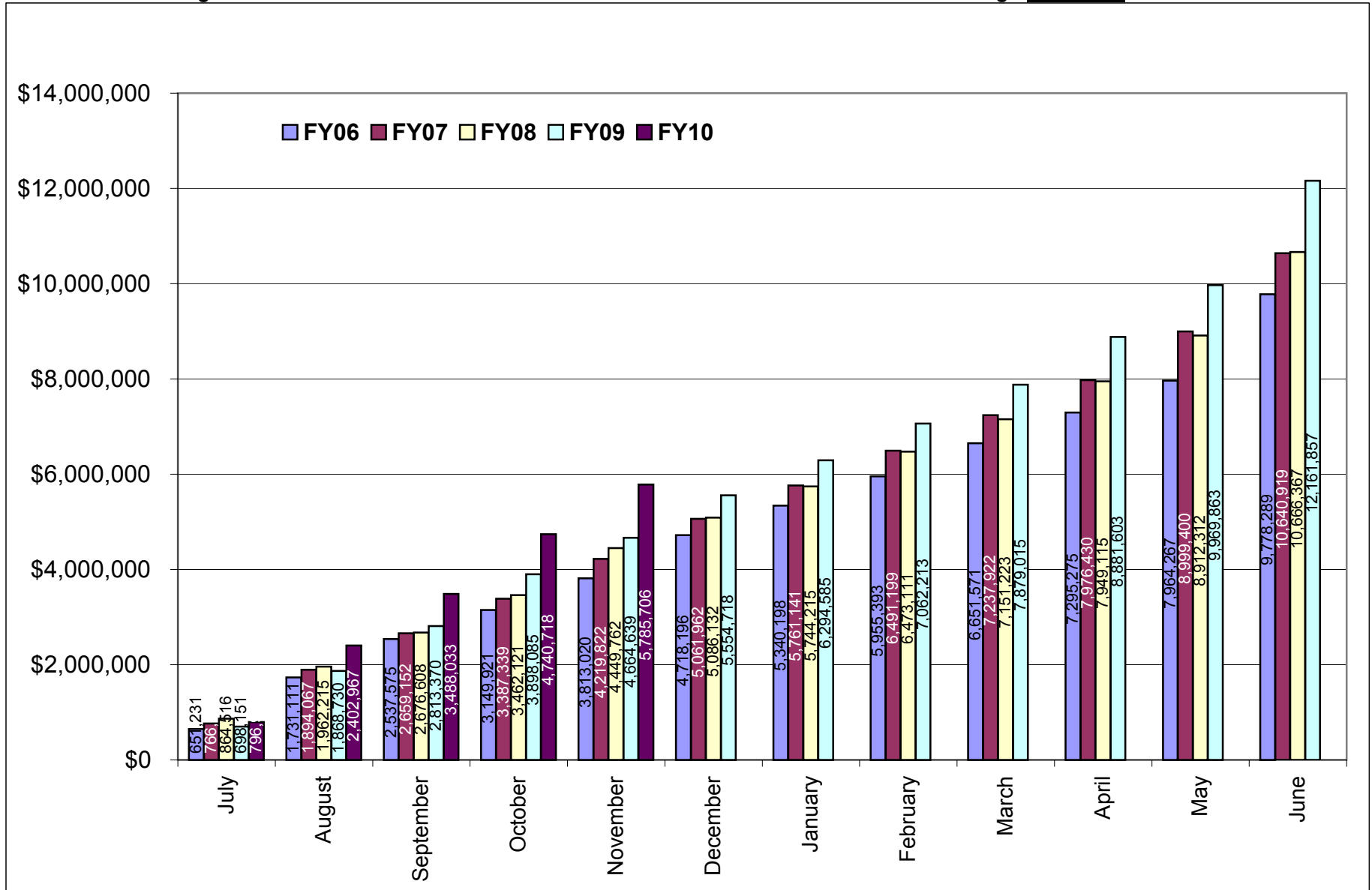
NA - Not Applicable (unit did not exist or was in another division)

**Table 4. Facilities and Administrative Funds received FY06 through November FY10**

Month	FY06		FY07	
	F&A Received		F&A Received	
	Amount	Cum. Amt.	Amount	Cum. Amt.
July	\$651,231.23	\$651,231.23	\$766,178.29	\$766,178.29
August	\$1,079,879.61	\$1,731,110.84	\$1,127,889.08	\$1,894,067.37
September	\$806,463.98	\$2,537,574.82	\$765,084.91	\$2,659,152.28
October	\$612,346.12	\$3,149,920.94	\$728,186.96	\$3,387,339.24
November	\$663,098.83	\$3,813,019.77	\$832,482.74	\$4,219,821.98
December	\$905,176.47	\$4,718,196.24	\$842,140.46	\$5,061,962.44
January	\$622,001.68	\$5,340,197.92	\$699,178.17	\$5,761,140.61
February	\$615,194.64	\$5,955,392.56	\$730,058.81	\$6,491,199.42
March	\$696,178.05	\$6,651,570.61	\$746,722.34	\$7,237,921.76
April	\$643,704.37	\$7,295,274.98	\$738,507.99	\$7,976,429.75
May	\$668,991.53	\$7,964,266.51	\$1,022,970.37	\$8,999,400.12
June	\$1,814,022.15	\$9,778,288.66	\$1,641,518.88	\$10,640,919.00
<b>Total</b>	<b>\$9,778,288.66</b>	<b>\$9,778,288.66</b>	<b>\$10,640,919.00</b>	<b>\$10,640,919.00</b>

Month	FY08		FY09		FY10	
	F&A Received		F&A Received		F&A Received	
	Amount	Cum. Amt.	Amount	Cum. Amt.	Amount	Cum. Amt.
July	\$864,515.94	\$864,515.94	\$698,151.33	\$698,151.33	\$796,999.29	\$796,999.29
August	\$1,097,698.98	\$1,962,214.92	\$1,170,579.13	\$1,868,730.46	\$1,605,967.25	\$2,402,966.54
September	\$714,393.48	\$2,676,608.40	\$944,639.40	\$2,813,369.86	\$1,085,066.61	\$3,488,033.15
October	\$785,512.17	\$3,462,120.57	\$1,084,715.03	\$3,898,084.89	\$1,252,685.25	\$4,740,718.40
November	\$987,641.06	\$4,449,761.63	\$766,554.38	\$4,664,639.27	\$1,044,988.01	\$5,785,706.41
December	\$636,370.60	\$5,086,132.23	\$890,078.29	\$5,554,717.56		
January	\$658,082.99	\$5,744,215.22	\$739,866.95	\$6,294,584.51		
February	\$728,895.70	\$6,473,110.92	\$767,628.61	\$7,062,213.12		
March	\$678,111.96	\$7,151,222.88	\$816,801.58	\$7,879,014.70		
April	\$797,892.59	\$7,949,115.47	\$1,002,588.07	\$8,881,602.77		
May	\$963,196.95	\$8,912,312.42	\$1,088,259.87	\$9,969,862.64		
June	\$1,754,055.05	\$10,666,367.47	\$2,191,994.43	\$12,161,857.07		
<b>Total</b>	<b>\$10,666,367.47</b>	<b>\$10,666,367.47</b>	<b>\$12,161,857.07</b>	<b>\$12,161,857.07</b>	<b>\$5,785,706.41</b>	<b>\$5,785,706.41</b>

Figure 4. Cumulative totals of Facilities and Administrative Funds received FY06 through November FY10



**Table 5. Summary of Facilities and Administrative Funds received by administrative and academic units FY06 through November FY10**

<b>Administrative</b>	<b>FY06</b>	<b>FY07</b>	<b>FY08</b>	<b>FY09</b>	<b>FY10 YTD</b>	<b>Totals</b>
PRESIDENT'S OFFICE	\$240,419.92	\$222,793.98	\$195,586.48	\$256,921.25	\$95,046.18	\$1,010,767.81
PROVOST	(\$361.86)	\$0.00	\$0.00	\$10,321.74	\$94.83	\$10,054.71
VP, ADMINISTRATION	\$0.00	\$0.00	\$0.00	\$29,224.56	\$21,076.87	\$50,301.43
VP, RESEARCH & ECONOMIC DEV	\$318,104.05	\$230,359.60	\$205,786.40	\$57,603.29	\$10,837.93	\$822,691.27
VP, STUDENT AFFAIRS	\$151,603.14	\$179,598.42	\$97,513.85	\$105,653.86	\$39,008.12	\$573,377.39
<b>Academic</b>						
ARTS & SCIENCES	\$1,258,906.19	\$1,390,620.28	\$1,606,108.04	\$2,016,328.02	\$1,029,724.88	\$7,301,687.41
BUSINESS ADMINISTRATION	\$14,317.57	\$92,017.59	\$47,837.18	\$80,815.65	\$2,095.49	\$237,083.48
CONTINUING EDUCATION	\$682.80	\$117.83	\$0.00	\$0.00	\$0.00	\$800.63
ENGINEERING	\$787,044.25	\$1,019,260.75	\$1,007,442.70	\$1,256,356.71	\$662,718.83	\$4,732,823.24
ENVIRONMENT & LIFE SCIENCES	\$1,539,601.57	\$1,660,959.07	\$1,812,703.38	\$2,192,102.97	\$1,011,519.99	\$8,216,886.98
GRADUATE SCHOOL	\$0.00	\$0.00	\$0.00	\$0.00	\$0.00	\$0.00
HUMAN SCIENCE & SERVICES	\$483,104.77	\$638,694.52	\$708,112.84	\$556,655.93	\$228,107.99	\$2,614,676.05
NURSING	\$68,818.51	\$67,808.30	\$61,174.29	\$127,327.24	(\$4,036.96)	\$321,091.38
OCEANOGRAPHY	\$4,151,582.23	\$4,257,758.61	\$4,045,120.50	\$4,192,315.78	\$2,117,502.53	\$18,764,279.65
PHARMACY	\$761,461.31	\$877,353.50	\$874,875.66	\$1,275,064.53	\$567,686.81	\$4,356,441.81
UNIVERSITY COLLEGE	\$3,004.21	\$3,576.55	\$4,106.15	\$4,626.40	\$1,722.65	\$17,035.96
UNIVERSITY LIBRARY	\$0.00	\$0.00	\$0.00	\$539.14	\$2,600.27	\$3,139.41
<b>Totals</b>	<b>\$9,778,288.66</b>	<b>\$10,640,919.00</b>	<b>\$10,666,367.47</b>	<b>\$12,161,857.07</b>	<b>\$5,785,706.41</b>	<b>\$49,033,138.61</b>

Note: A negative amount reflects an adjustment to the previous fiscal year.



**Table 5a. Facilities and Administrative Funds received by departments within colleges FY06 through November FY10**

<u>College</u>	<u>FY06</u>	<u>FY07</u>	<u>FY08</u>	<u>FY09</u>	<u>FY10 YTD</u>	<u>Totals</u>
<b>Arts and Sciences</b>	<b>\$1,258,906.19</b>	<b>\$1,390,620.28</b>	<b>\$1,606,108.04</b>	<b>\$2,016,328.02</b>	<b>\$1,029,724.88</b>	<b>\$7,301,687.41</b>
ART	\$60.00	\$838.04	\$808.60	\$1,410.59	\$0.00	\$3,117.23
CANCER PREVENTION RESEARCH CTR	\$741,293.31	\$769,490.00	\$936,294.44	\$1,191,620.62	\$513,244.19	\$4,151,942.56
CHEMISTRY	\$105,692.17	\$161,797.16	\$224,026.38	\$271,170.05	\$232,350.26	\$995,036.02
COMMUNICATION STUDIES	\$4,714.76	\$4,300.21	\$1,915.43	\$12,837.04	\$5,981.56	\$29,749.00
COMPUTER SCIENCE/STATISTICS	\$161,209.60	\$136,886.07	\$135,110.44	\$142,988.54	\$102,056.43	\$678,251.08
DEAN'S OFFICE	\$50,703.73	\$93,809.29	\$40,004.62	\$0.00	\$0.00	\$184,517.64
ECONOMICS	\$1,654.34	\$2,253.51	\$191.33	\$0.00	\$0.00	\$4,099.18
FEINSTEIN HUNGER CENTER (DEAN'S OFFICE)	\$0.00	\$0.00	\$64,704.49	\$119,697.20	\$48,096.83	\$232,498.52
HISTORY	\$10,328.02	\$24,808.97	\$7,408.66	\$14,811.26	\$4,698.06	\$62,054.97
LANGUAGES	\$0.00	\$2,598.55	\$3,061.60	\$67,887.69	\$35,155.10	\$108,702.94
LIBRARY AND INFORMATION STUDIES	\$2,941.42	\$11,027.29	\$10,085.71	\$827.28	\$0.00	\$24,881.70
MATHEMATICS	\$4,148.50	\$13,685.84	\$9,989.50	\$0.00	\$0.00	\$27,823.84
PHYSICS	\$51,521.86	\$52,607.96	\$81,557.22	\$138,494.67	\$72,514.77	\$396,696.48
PSYCHOLOGY	\$101,213.20	\$102,022.79	\$80,776.04	\$49,875.54	\$14,193.93	\$348,081.50
SOCIOLOGY/ANTHROPOLOGY	\$7,099.83	\$12,048.35	\$9,920.76	\$4,707.54	\$1,433.75	\$35,210.23
WOMEN'S STUDIES	\$16,325.45	\$2,446.25	\$252.82	\$0.00	\$0.00	\$19,024.52
<b>Business Administration</b>	<b>\$14,317.57</b>	<b>\$92,017.59</b>	<b>\$47,837.18</b>	<b>\$80,815.65</b>	<b>\$2,095.49</b>	<b>\$237,083.48</b>
DEAN'S OFFICE	\$0.00	(\$0.05)	\$0.00	\$0.00	\$0.00	(\$0.05)
FACULTY - INSTRUCTION	\$14,317.39	\$92,017.64	\$47,837.18	\$80,815.65	\$2,095.49	\$237,083.35
RESEARCH CTR FOR BUSINESS ECONOMICS	\$0.18	\$0.00	\$0.00	\$0.00	\$0.00	\$0.18

Note: A negative amount reflects an adjustment to the previous fiscal year.

<u>College</u>	<u>FY06</u>	<u>FY07</u>	<u>FY08</u>	<u>FY09</u>	<u>FY10 YTD</u>	<u>Totals</u>
<b>Continuing Education</b>	<b>\$682.80</b>	<b>\$117.83</b>	<b>\$0.00</b>	<b>\$0.00</b>	<b>\$0.00</b>	<b>\$800.63</b>
BIOTECH MANUFACTURING PROVIDENCE	(\$1,643.40)	\$0.00	\$0.00	\$0.00	\$0.00	(\$1,643.40)
LABOR RESEARCH CENTER	\$2,326.20	\$117.83	\$0.00	NA	NA	\$2,444.03
<hr/>						
<b>Engineering</b>	<b>\$787,044.25</b>	<b>\$1,019,260.75</b>	<b>\$1,007,442.70</b>	<b>\$1,256,356.71</b>	<b>\$662,718.83</b>	<b>\$4,732,823.24</b>
CHEMICAL ENGINEERING	\$136,617.97	\$203,950.58	\$213,852.81	\$287,771.39	\$138,910.62	\$981,103.37
CIVIL/ENVIRONMENTAL ENGINEERING	\$27,905.27	\$38,581.43	\$49,919.59	\$52,401.77	\$23,540.63	\$192,348.69
DEAN'S OFFICE	\$7,095.01	\$1,037.02	\$660.04	\$0.00	\$0.00	\$8,792.07
ELECTRICAL ENGINEERING	\$136,085.66	\$169,750.81	\$128,124.96	\$146,950.95	\$95,757.70	\$676,670.08
INDUSTRIAL/MANUFACTURING EGR	\$63,026.29	\$74,513.35	\$67,699.10	\$77,122.82	NA	\$282,361.56
MECHANICAL AND INDUSTRIAL SYSTEMS EGR	NA	NA	NA	NA	\$318,446.08	\$318,446.08
MECHANICAL EGR/APPLIED MECHANICS	\$253,944.40	\$339,503.76	\$377,660.34	\$513,988.06	NA	\$1,485,096.56
OCEAN ENGINEERING	\$162,369.65	\$191,923.80	\$169,525.86	\$178,121.72	\$86,063.80	\$788,004.83
<hr/>						
<b>Environment &amp; Life Sciences</b>	<b>\$1,539,601.57</b>	<b>\$1,660,959.07</b>	<b>\$1,812,703.38</b>	<b>\$2,192,102.97</b>	<b>\$1,011,519.99</b>	<b>\$8,216,886.98</b>
BIOLOGICAL SCIENCES	\$77,336.25	\$124,441.45	\$133,502.71	\$148,526.66	\$51,842.17	\$535,649.24
CELL AND MOLECULAR BIOLOGY	\$153,773.73	\$199,669.09	\$179,411.16	\$269,949.88	\$256,352.01	\$1,059,155.87
COMMUNITY PLANNING/AREA DEVEL	\$5,214.95	\$6,504.68	\$14,574.67	\$17,033.93	\$4,791.52	\$48,119.75
COOPERATIVE EXTENSION	\$15,096.43	\$16,479.70	\$28,725.14	\$24,629.56	\$6,525.14	\$91,455.97
DEAN'S OFFICE	\$64,467.82	\$76,131.76	\$158,549.59	\$240,746.08	\$27,450.56	\$567,345.81
ENV & NAT RESOURCE ECONOMICS	\$129,878.18	\$132,986.53	\$131,042.54	\$105,626.63	\$51,451.73	\$550,985.61
FISHERIES, ANIMAL & VET SCIENCE	\$175,519.21	\$159,958.57	\$216,632.99	\$209,572.99	\$108,619.40	\$870,303.16
FOOD SCIENCE/NUTRITION	\$204,331.16	\$196,090.36	\$229,778.83	\$239,792.86	\$107,848.14	\$977,841.35
GEOSCIENCE	\$83,794.80	\$59,995.68	\$69,993.79	\$204,787.30	\$98,433.15	\$517,004.72
MARINE AFFAIRS	\$28,385.30	\$46,240.28	\$58,233.40	\$42,732.60	\$15,043.24	\$190,634.82
NATURAL RESOURCES SCIENCE	\$423,269.57	\$376,677.28	\$390,050.86	\$467,152.38	\$235,543.48	\$1,892,693.57
PLANT SCIENCE	\$178,534.17	\$265,783.69	\$202,207.70	\$221,552.10	\$47,619.45	\$915,697.11

NA - Not Applicable (department did not exist or was in another college)

Note: A negative amount reflects an adjustment to the previous fiscal year.

<u>College</u>	<u>FY06</u>	<u>FY07</u>	<u>FY08</u>	<u>FY09</u>	<u>FY10 YTD</u>	<u>Totals</u>
<b>Graduate School</b>	<b>\$0.00</b>	<b>\$0.00</b>	<b>\$0.00</b>	<b>\$0.00</b>	<b>\$0.00</b>	<b>\$0.00</b>
<b>Human Science &amp; Services</b>	<b>\$483,104.77</b>	<b>\$638,694.52</b>	<b>\$708,112.84</b>	<b>\$556,655.93</b>	<b>\$228,107.99</b>	<b>\$2,614,676.05</b>
COMMUNICATIVE DISORDERS	\$13,876.67	\$81,483.63	\$52,452.04	\$9,254.68	\$0.00	\$157,067.02
DEAN'S OFFICE	\$0.00	\$0.00	\$0.00	\$0.00	\$6,233.27	\$6,233.27
EDUCATION	\$277,429.80	\$307,206.01	\$317,565.45	\$302,851.11	\$121,940.51	\$1,326,992.88
EDUCATION & SOCIAL POLICY RESEARCH	\$82,323.24	\$82,676.54	\$70,549.36	\$31,916.31	\$2,839.98	\$270,305.43
GERONTOLOGY	\$36,041.89	\$69,483.11	\$135,996.87	\$130,657.12	\$46,865.41	\$419,044.40
HUMAN DEV/COUNSEL/FAM STUDIES	\$39,559.81	\$17,628.46	\$6,042.13	\$12,273.25	\$10,775.84	\$86,279.49
KINESIOLOGY	NA	NA	NA	NA	\$1,163.68	\$1,163.68
PHYS ED/HEALTH/RECREATION	\$18,881.55	\$13,758.82	\$4,670.32	\$6,850.47	NA	\$44,161.16
PHYSICAL THERAPY	(\$123.45)	\$48,930.88	\$108,764.97	\$58,466.83	\$26,967.79	\$243,007.02
TEACHER EDUCATION	\$128.93	\$0.00	\$0.00	\$0.00	\$0.00	\$128.93
TEXTILES/FASHION MERCHAND/DESIGN	\$14,986.33	\$17,527.07	\$12,071.70	\$4,386.16	\$11,321.51	\$60,292.77
<b>Nursing</b>	<b>\$68,818.51</b>	<b>\$67,808.30</b>	<b>\$61,174.29</b>	<b>\$127,327.24</b>	<b>(\$4,036.96)</b>	<b>\$321,091.38</b>
<b>Oceanography</b>	<b>\$4,151,582.23</b>	<b>\$4,257,758.61</b>	<b>\$4,045,120.50</b>	<b>\$4,192,315.78</b>	<b>\$2,117,502.53</b>	<b>\$18,764,279.65</b>
<b>Pharmacy</b>	<b>\$761,461.31</b>	<b>\$877,353.50</b>	<b>\$874,875.66</b>	<b>\$1,275,064.53</b>	<b>\$567,686.81</b>	<b>\$4,356,441.81</b>
APPLIED PHARMACEUTICAL SCIENCES	\$242.44	(\$242.44)	NA	NA	NA	\$0.00
BIOMEDICAL AND PHARMACEUTICAL SCIENCES	\$701,738.36	\$828,252.37	\$816,361.91	\$1,172,414.34	\$503,489.39	\$4,022,256.37
BIOMEDICAL SCIENCES	\$74.10	(\$74.10)	NA	NA	NA	\$0.00
DEAN'S OFFICE	\$37,241.26	\$35,276.89	\$24,549.27	\$19,332.93	\$0.00	\$116,400.35
ELDERLY MEDICATION	(\$2.21)	(\$72.32)	NA	NA	NA	(\$74.53)
PHARMACY PRACTICE	\$22,167.36	\$14,213.10	\$33,964.48	\$83,317.26	\$64,197.42	\$217,859.62

NA - Not Applicable (department did not exist or was in another college)

Note: A negative amount reflects an adjustment to the previous fiscal year.

<u>College</u>	<u>FY06</u>	<u>FY07</u>	<u>FY08</u>	<u>FY09</u>	<u>FY10 YTD</u>	<u>Totals</u>
University College	\$3,004.21	\$3,576.55	\$4,106.15	\$4,626.40	\$1,722.65	\$17,035.96
University Library	\$0.00	\$0.00	\$0.00	\$539.14	\$2,600.27	\$3,139.41

**Table 5b. Facilities and Administrative Funds received by units within administrative divisions FY06 through November FY10**

<u>Administrative Unit</u>	<u>FY06</u>	<u>FY07</u>	<u>FY08</u>	<u>FY09</u>	<u>FY10 YTD</u>	<u>Totals</u>
<b>President's Office</b>	<b>\$240,419.92</b>	<b>\$222,793.98</b>	<b>\$195,586.48</b>	<b>\$256,921.25</b>	<b>\$95,046.18</b>	<b>\$1,010,767.81</b>
PRESIDENT'S OFFICE	\$0.00	\$1.13	\$0.00	\$0.00	\$0.00	\$1.13
TRANSPORTATION CENTER	\$240,419.92	\$222,792.85	\$195,586.48	\$256,921.25	\$95,046.18	\$1,010,766.68
<b>Provost</b>	<b>(\$361.86)</b>	<b>\$0.00</b>	<b>\$0.00</b>	<b>\$10,321.74</b>	<b>\$94.83</b>	<b>\$10,054.71</b>
ADVANCE OFFICE	(\$361.86)	\$0.00	\$0.00	\$8,685.44	\$87.20	\$8,410.78
LABOR RESEARCH CENTER	NA	NA	NA	\$1,636.30	\$7.63	\$1,643.93
PROVOST	\$0.00	\$0.00	\$0.00	\$0.00	\$0.00	\$0.00
<b>VP, Administration (includes Police)</b>	<b>\$0.00</b>	<b>\$0.00</b>	<b>\$0.00</b>	<b>\$29,224.56</b>	<b>\$21,076.87</b>	<b>\$50,301.43</b>
<b>VP, Research &amp; Economic Development (includes NEAGEP)</b>	<b>\$318,104.05</b>	<b>\$230,359.60</b>	<b>\$205,786.40</b>	<b>\$57,603.29</b>	<b>\$10,837.93</b>	<b>\$822,691.27</b>
<b>VP, Student Affairs</b>	<b>\$151,603.14</b>	<b>\$179,598.42</b>	<b>\$97,513.85</b>	<b>\$105,653.86</b>	<b>\$39,008.12</b>	<b>\$573,377.39</b>
CAMPUS LIFE	\$19,569.91	\$12,408.49	\$25,128.56	\$22,585.53	\$5,258.93	\$84,951.42
HEALTH SERVICES	\$0.00	\$0.00	\$0.00	\$0.00	\$0.00	\$0.00
STUDENT LIFE	\$131,987.98	\$142,013.25	\$39,429.93	\$29,185.49	\$12,266.47	\$354,883.12
TALENT DEVELOPMENT	\$45.25	\$25,176.68	\$32,955.36	\$53,882.84	\$21,482.72	\$133,542.85

NA - Not Applicable (unit did not exist or was in another division)

Note: A negative amount reflects an adjustment to the previous fiscal year.