

University of Rhode Island

DigitalCommons@URI

---

Gender and Sexuality Center History

Gender and Sexuality Center

---

2014

## LGBT Center Schematic

Follow this and additional works at: <https://digitalcommons.uri.edu/gender-sexuality-history>

---

### Recommended Citation

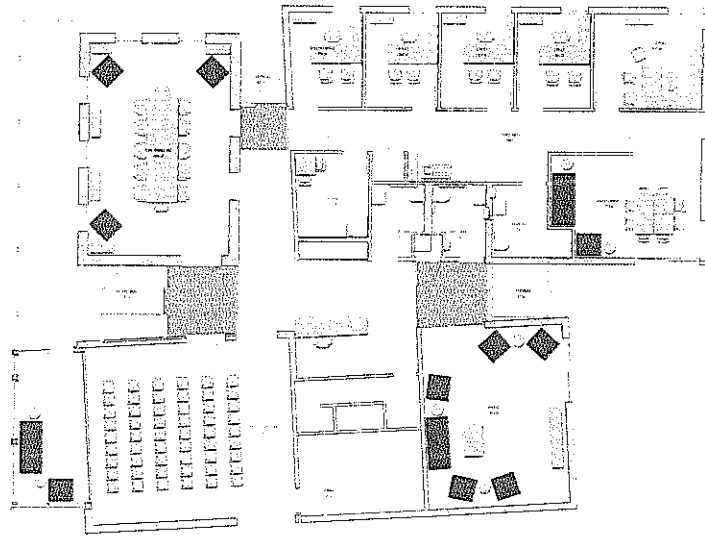
"LGBT Center Schematic" (2014). *Gender and Sexuality Center History*. Paper 9.

<https://digitalcommons.uri.edu/gender-sexuality-history/9><https://digitalcommons.uri.edu/gender-sexuality-history/9>

This Pamphlet is brought to you for free and open access by the Gender and Sexuality Center at DigitalCommons@URI. It has been accepted for inclusion in Gender and Sexuality Center History by an authorized administrator of DigitalCommons@URI. For more information, please contact [digitalcommons@etal.uri.edu](mailto:digitalcommons@etal.uri.edu).



**LESBIAN, GAY, BISEXUAL,  
TRANSGENDER, QUEER CENTER**

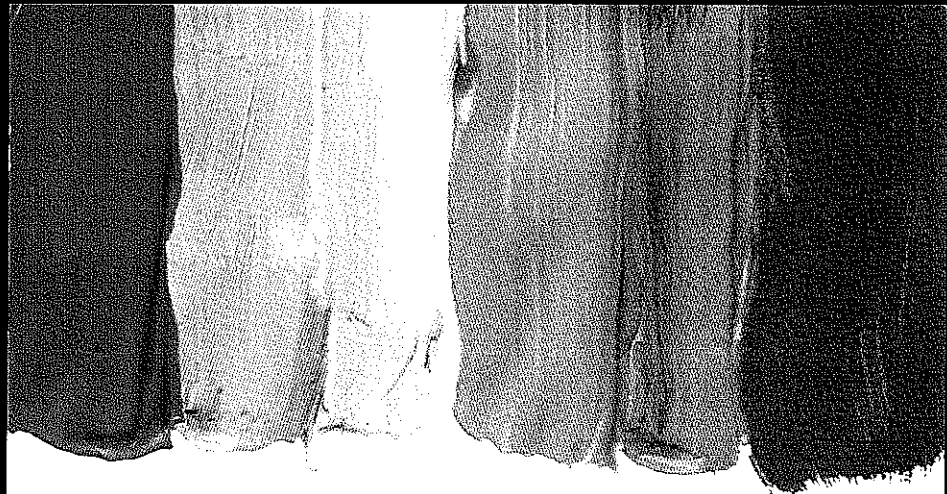


[uri.edu/glbq](http://uri.edu/glbq)



2010





THE  
UNIVERSITY  
OF RHODE ISLAND  
COMMUNITY, EQUITY  
AND DIVERSITY

*GROUNDBREAKING CEREMONY FOR THE*  
**LESBIAN, GAY, BISEXUAL,  
TRANSGENDER, QUEER CENTER**

**APRIL 16, 2014**

**WELCOME** E. I. Annie Russell, Director  
URI LGBTQ Center

**GREETINGS** David M. Dooley, President, URI

**REMARKS** The Honorable Lincoln D. Chafee  
Governor of Rhode Island

E. I. Annie Russell, Director  
URI LGBTQ Center

Naomi R. Thompson, Vice President for  
Community, Equity, and Diversity, URI

FloJo Badejo '18, LGBTQA  
Student Identity Specialist

**GROUNDBREAKING CEREMONY**

*Please join us for light refreshments immediately following the ceremony.*



THE  
UNIVERSITY  
OF RHODE ISLAND  
COMMUNITY EQUITY  
AND DIVERSITY

*GRAND OPENING PROGRAM*  
**Gender and Sexuality Center**  
**MAY 6, 2015**  
**11 A.M.**

**WELCOME** E. I. Annie Russell, Director  
URI Gender and Sexuality Center

**GREETINGS** David M. Dooley, President, URI

**REMARKS** Naomi R. Thompson, Associate Vice President  
URI Office of Community, Equity, and Diversity

Jessica Brand '14

Kit Yan, Slam Poet

E. I. Annie Russell, Director  
URI Gender and Sexuality Center

Mathew DeLaire '11

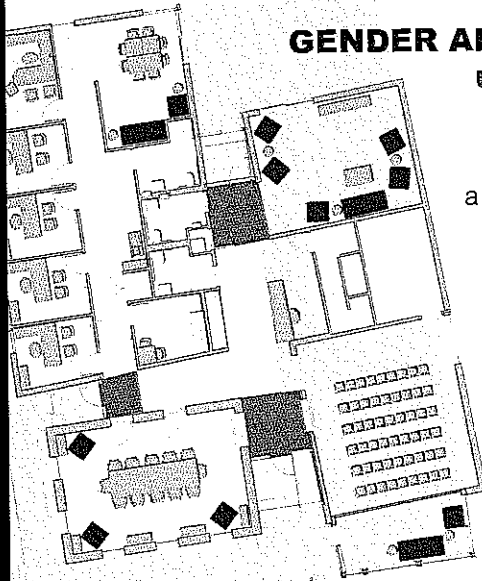
Elizabeth Koller '15

**RIBBON CUTTING CEREMONY**

*Please join us for a light lunch and tour of our new building  
immediately following the ceremony. Guided tours will continue  
throughout the day until 4 p.m.*



## **GENDER AND SEXUALITY CENTER** [uri.edu/gender-sexuality](http://uri.edu/gender-sexuality)



The 4,300-square-foot building includes a multipurpose room with a capacity of about 50, a conference room that seats 30, a group consultation room, and a lounge. There are offices for the director, three staff members, and student staff members.

Designed by LLB Architects  
of Pawtucket, R.I.

Constructed by Nadeau Corporation  
of South Attleboro, Mass.

THINK BIG  WE DO

