



## *Clubs*



# RHODE ISLAND STATE COLLEGE

## EAST HALL ASSOCIATION

*Founded at Rhode Island in 1930*

*Total Membership 271*



*Back Row:* Banfield, Doherty, Matley, Snider, Spooner, Hall, Osborne, Bond, Sanik, Parnigoni  
*Third Row:* Francis, Wallick, Mangan, Kudzma, Sadler, MacKinnon, Kulick, Withey, Baram, Walder, Potter, Follis, Caputi, Goldman  
*Second Row:* Laboissonniere, Ciccone, Gray, Garceau, Barber, Bloom, Erhardt, Mercure, Spencer, Wilson, Larson, Farnum, Iacofano, Rancourt, Tew, Cashman, Sadwin, Beaubian, Hathaway, Ostrach, Feeley  
*Front Row:* Perkins, Stringer, Weiss, Kaufman, Hunter, Thompson, Lewis, Smith, Palmer, Wilson, Crowther, Colliander, Chase, Andrews, Anderson

### OFFICERS

<i>President</i> . . . . .	WILLIAM C. SMITH
<i>Vice-President</i> . . . . .	LEONARD A. LEWIS
<i>Secretary</i> . . . . .	HUGH E. THOMPSON
<i>Treasurer</i> . . . . .	EARL J. PALMER, JR.



## EAST HALL ASSOCIATION

### FACULTY ADVISERS

DR. FRANCIS R. HUNTER

DR. LEE C. WILSON

### UNDERGRADUATE MEMBERS

#### CLASS OF 1940

CARL V. ANDERSON  
ALLEN W. ANDREWS  
BORDEN L. CHASE  
ALBERT P. CICCONE  
VIKING I. COLLEANDER

PHILIP V. CROWTHER  
ROBERT R. FRANCIS  
MARTIN J. KAUFMAN  
EDWIN H. PERKINS  
HERBERT D. RANDALL, JR.

WILLIAM C. SMITH  
LOUIS D. STRINGER  
HYMAN WALLICK  
HUNY D. WEISS

#### CLASS OF 1941

WILLIAM BANFIELD  
SAUL B. BARBER  
HOWARD R. BROWN

ANTHONY P. CAPUTI  
LOUIS A. DOHERTY  
EDWARD J. FEELY, JR.

LEONARD A. LEWIS  
EARL J. PALMER, JR.  
STANLEY H. SPOONER

#### CLASS OF 1942

MORRIS BARAM  
JOHN G. ERHARDT, JR.  
HENRY G. GARCEAU, JR.  
MORTON GOLDMAN  
HERBERT L. HALL  
DONALD B. HATHAWAY

EUGENE W. LABOISSONNIERE  
CARL A. LARSON, JR.  
NOEL S. MACKINNON  
VERNON E. MATLEY  
RICHARD PARNIGONI  
SHERWOOD H. SADWIN

JOHN SANIR, JR.  
LESTER N. SNIDER  
FREDERICK C. TEW  
HUGH E. THOMPSON  
WALTER W. WILSON  
WILLIAM H. WITHEY

#### CLASS OF 1943

WILLIAM A. BLOOM  
GEORGE H. BOND  
THOMAS J. CASHMAN, JR.  
HOLLIS B. FARNUM  
LAWRENCE E. FOLLS  
RICHARD O. FOURNIER  
WILFRED H. GLADUE

ASHER T. GRAY  
JOSEPH IACIOFANO  
WALTER KUDZMA  
MATTHEY J. KULICK  
PAUL C. MANGAN  
LOUIS W. MERCURE

ROBERT S. OSBORNE  
MORRIS L. OSTRACH  
JOHN PLATT  
DEXTER M. POTTER  
PHILIP T. RANCOURT, JR.  
HAROLD M. SABLER  
ALEX J. WALDER



# RHODE ISLAND STATE COLLEGE

## ELEANOR ROOSEVELT HALL ASSOCIATION

*Active Membership 50*

*Total Membership 90*

*Organized in 1937*

The Girls' Dorm, christened October 1, 1938, as Eleanor Roosevelt Hall by the wife of the President, is a completely modern dormitory for the women of the college.

More than one hundred residents, under the guidance of Miss Mary Evans Chase, make up the Association. Officers, rules and problems are handled by the group as a unit.



*First Row:* Clark, Lavalley, Davis, Leary, Sicilian, Gates, Chaharyn, Genua, Paldino, Kahn, Martin  
*Second Row:* Meyer, Easterbrooks, McCarron, Norton, Hobson, Perry, Davis, Sawyer, McCrudden, Ramos  
*Third Row:* Dunn, Winsberg, Crubak, Monti, Ball, Moriarty, Zelest, Brown, Hoenstein  
*Fourth Row:* Dickinson, Lalli, Blackler, Walsh, Ray, Brown, Campbell, Pierce, Morrone, Lazarek

### OFFICERS

<i>President</i>	. . . . .	MADELINE S. CONTI
<i>Vice-President</i>	. . . . .	THERESA M. FERRAZZOLI
<i>Secretary</i>	. . . . .	MABEL BARGAMIAN
<i>Treasurer</i>	. . . . .	MARY E. RAMOS



## ELEANOR ROOSEVELT HALL ASSOCIATION

### FACULTY ADVISERS

MISS MARY EVANS CHASE

MISS LYNETTE J. GOGGINS

### UNDERGRADUATE MEMBERS

#### CLASS OF 1940

RUTH COHEN

ELIZABETH GATES

RITA LEARY

MADÉLINE CONTI

VIRGINIA GENUA

THERESA SICILIAN

FRANCES DUFFY

#### CLASS OF 1941

HELEN ABRAMS

MIRIAM DAVIS

RUTH PALLEY

BEATRICE BELOFSKY

THERESA FERRAZZOLI

EVELYN RAMOS

ANN CHAHARYN

VIRGINIA GILMAN

DOROTHY RAY

EYHLE CHERNICK

CAROL HAWES

SHIRLEY STERN

MARCELLA CZURAK

RHODA HOBSON

SARAH WINSBERG

RUTH MACKAY

#### CLASS OF 1942

MYRTLE ABEDON

ROSALIE HILTON

VIRGINIA MONTI

MABEL BARGAMIAN

FLORENCE HORNSTEIN

ELLEN MURPHY

RUTH BLACKLER

RENEE KAHN

RUTH NORTON

RUTH BROWN

VICTORIA LAZAREK

ELLEN O'CONNOR

MARY D'AQUANNO

FERN MAGEE

OLGA PERRY

JEANNE MARIE DAVIS

AVIS MARBLE

EDITH ROBINSON

MARIBEL EASTERBROOKS

LOIS MARTIN

MIRIAM SHANLEY

SHIRLEY GENSER

ELIZABETH MCCRUDDEN

DOROTHY THAVENET

ELEANOR HEALEY

MARIE MEOLA

VIRGINIA WALSH

MYRTLE MEYER



# RHODE ISLAND STATE COLLEGE

## DAVIS HALL



*Front Row:* Ballerino, St. Germaine, McGinn, K. Bennett, Thompson, Maguire, Francis, Reed  
*Second Row:* McBride, Lamphere, Halipos, Watson, Mills, Hartigan, Calderone, Wurtz, Leech  
*Third Row:* Shippee, Noble, Palmer, Hyland, Goeckel, Watt, Griffin

### OFFICERS

*President* . . . . . VIRGINIA F. BENNETT  
*Vice-President* . . . . . KATHLEEN T. BENNETT  
*Secretary-Treasurer* . . . . . EUNICE E. THOMPSON



## PHAEACIANS

The Phaeacians, composed of feminine commuters, is fortunate in possessing its own well-furnished room in Quinn Hall. As a coherent unit, the girls participate in all campus activities. This year, they won the intramural basketball cup. The development of college spirit and loyalty is the aim of the Phaeacians.



*First Row:* Votta, Peters, Shippee, Crandall, Howland, Selby, Safstrom, McMahon, Cella  
*Second Row:* Suitor, M. Burt, Argentieri, R. Burt, Hannah, Thompson, Carney, Reilly, Rose

### OFFICERS

*President* . . . . . SYLVIA A. HOWLAND  
*Vice-President* . . . . . MARGUERITE A. CRANDALL  
*Secretary-Treasurer* . . . . . ELSIE M. SHIPPEE



# RHODE ISLAND STATE COLLEGE

## PHAEACIANS

### CLASS OF 1940

BETTY BRENNAN  
KAY CHRISTOWSKI

MARGUERITE CRANDALL  
MARGARET PETERS

MARJORIE SAFFORD  
GRACE SAFSTROM

### CLASS OF 1941

BARBARA CLARK  
SYLVIA HOWLAND

LEONA McELROY  
MILDRED POTTER  
MURIEL SELBY

PHYLLIS STAVELY  
ELINOR SUITER

### CLASS OF 1942

DORIS ARGENTIERI  
MAE BURT  
ROSALIE BURT  
DOROTHY CAMPBELL

MARIE CARNEY  
BEATRICE CELLA  
DELMA DeLaskey  
RUTH HANNAH

ELIZABETH HEALEY  
JOSEPHINE McMAHON  
DORIS RILEY  
CAROLINE ROSE

### CLASS OF 1943

NORMA GARDINER

GERTRUDE LOSERY  
MADELYN MAINLY

JANE VOTTA





THE MANSE



*Standing:* Colome, Wood, Monte, Smith, Wicks, Novack, Atlick, Morris, Gilman  
*Sitting:* Lebrun, Rev. MacCreedy, Joslin

OFFICERS

<i>President</i> . . . . .	EDMOND J. LEBRUN
<i>Chaplain</i> . . . . .	ALLEN W. JOSLIN



# RHODE ISLAND STATE COLLEGE

## TAVEN HALL ASSOCIATION



*First Row:* Prof. Almsfeldt, McGarry, Morrisette, Muldoon, Griffin

*Second Row:* Assis, Beauchamp, Tirocchi, Frazier, Barrowclough, Painchaud, Robinson, Martin, Feibleman

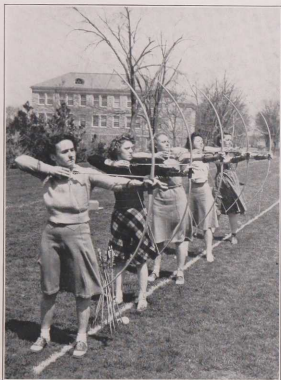
### OFFICERS

*President* . . . . . JOHN V. MORRISSETTE

*Vice-President* . . . . . BENJAMIN D. GRIFFIN

*Secretary* . . . . . JOSEPH A. MCGARRY

*Treasurer* . . . . . JAMES E. MULDOON, JR.



## *Activities*



# RHODE ISLAND STATE COLLEGE

## *Contents*

	PAGE
ADMINISTRATION . . . . .	249
PUBLICATION . . . . .	251
HONORARY . . . . .	253
DEBATING . . . . .	262
MUSICAL . . . . .	266
DISCUSSION . . . . .	271
SPECIALTY . . . . .	274
TECHNICAL . . . . .	279



## SACHEMS

The Sachems is an honorary organization made up of fifteen members of the Junior Class who remain on duty throughout their Senior year. The purpose of the society is to conduct elections, run the Mayoralty campaign, apply Freshmen rules, and supervise other activities not directly controlled by the faculty. The members, elected on the basis of a point system aggregated through scholarship and extra-curricular activities, serve to promote a friendly interchange of ideas between faculty and student body.



*First Row:* Livingston, Haufe, Dean, Schwartz, Hornby

*Second Row:* Belisle, Cuddy, Woodberry, Trescott, Faulk, Clarke, Waterman

*Moderator* . . . . . ARTHUR L. DEAN, JR.

*Secretary* . . . . . MARY K. SCHWARTZ

### MEMBERS

ROBERT J. BELISER  
THEODORE S. CLARKE  
GEORGE E. CUDDY  
ARTHUR L. DEAN, JR.  
DONALD P. FAULK

JOHN C. HAUFE  
VIRGINIA F. HORNBY  
ALFRED JAFFE  
ESTHER L. LIVINGSTONE  
GORDON W. MACINTOSH

RUTH L. NICHOLS  
MARY K. SCHWARTZ  
ROBERT W. TRESCOTT  
BARNEY WATERMAN  
HERBERT F. WOODBURY

### FACULTY ADVISERS

DR. VERNON I. CHEADLE

PROFESSOR DONALD E. STEARNS



# RHODE ISLAND STATE COLLEGE

## WOMEN'S STUDENT GOVERNMENT ASSOCIATION

Every woman student enrolled in the college automatically becomes a member of this organization. It is one of the most important and highly regarded honoraries on the campus, having as its purpose the enforcement and regulation of co-ed conduct rules. Student Council, composed of representatives from every class, dormitory, and sorority, maintains all executive authority and, also, tries and punishes all violations to the rules at regular bi-monthly meetings. W. S. G. A. awards three scholarships yearly to the highest girl students in the Freshman, Sophomore and Junior classes as an incentive to study and as an assistance to deserving students.



Front Row: Sumner, Thackeray, Schwartz, Richmond  
Second Row: Richard, Mann, Carpenter, Nichols, Thompson

### OFFICERS

President . . . . .	MARY K. SCHWARTZ
Vice-President . . . . .	MARGARET R. THACKERAY
Secretary-Treasurer . . . . .	BETTY N. RICHMOND
Faculty Adviser . . . . .	DEAN HELEN E. PECK



## THE BEACON

A résumé and forecast of campus events may be found in the student weekly newspaper, the BEACON. Free speech is the order of the day, and the BEACON plays its beam on all student problems, frequently crusading for better conditions. Ranking high as an inter-collegiate newspaper, the BEACON prides itself on its unselfish policy of advancing those causes which deserve campus support. This year has been an outstanding one, highlighted by vigorous editorial campaigns which reflected student interests.



*Left to Right: Kaufman, Woodbury, Hornby, Schwartz, Greene, Kirwin, Waterman, Fiske*

### 1939-40 BEACON STAFF

<i>Editor-in-Chief</i> . . . . .	EUGENE M. GREENE
<i>Managing Editor</i> . . . . .	VIRGINIA F. HORNBY
<i>News Editor</i> . . . . .	HERBERT F. WOODBURY
<i>Sports Editor</i> . . . . .	JOSEPH F. KIRWIN
<i>Feature Editor</i> . . . . .	MARY K. SCHWARTZ
<i>Business Manager</i> . . . . .	BARNEY WATERMAN
<i>Advertising Manager</i> . . . . .	MARTIN J. KAUFMAN
<i>Circulation Manager</i> . . . . .	EUGENE S. FISKE
<i>Faculty Adviser</i> . . . . .	PROF. HERBERT M. HOFFORD



# RHODE ISLAND STATE COLLEGE

## FRESHMAN BIBLE

The Freshman Bible is published each fall by members of the incoming Senior Class. It is distributed to the Freshmen during their first few days of college life in an effort to acquaint them with the various college rules, activities, and fraternities. Although this book does not compare with the Grist in size and amount of work necessary for publication, it does play an important part in the general orientation of the Freshmen.



Front Row: Livingstone, Woodbury  
Back Row: Cohen, Faulk, Kirwin, Waterman

### STAFF

<i>Editor-in-Chief</i>	HERBERT F. WOODBURY
<i>Managing Editor</i>	ARTHUR L. DEAN, JR.
<i>Women's Editor</i>	ESTHER L. LIVINGSTONE
<i>Sports Editor</i>	GORDON W. MACINTOSH
<i>Feature Editor</i>	DONALD P. FAULK
<i>Women's Sports Editor</i>	MARY K. SCHWARTZ
<i>Activities Editor</i>	RUTH H. COHEN
<i>Business Manager</i>	BARNEY WATERMAN
<i>Advertising Manager</i>	EUGENE S. FISKE
<i>Circulation Manager</i>	JOSEPH F. KIRWIN





## PHI KAPPA PHI

Election to Phi Kappa Phi is the highest scholastic honor granted to students of Rhode Island State College. The local chapter is part of a national Honorary Society organized in 1897 for the purpose of promoting scholarship among American college students. According to a national ruling, no more than ten per cent of the graduating class can be taken into membership. Honor students of high character only are considered. Two elections a year are held, one in the fall and one in the spring.

The Rhode Island chapter sponsors an Honors Day assembly program each October. It also gives a party to first semester freshman honor students. This year, Dr. Homer L. Shantz, national president, attended the fall initiation and delivered a public lecture.



*Left to Right: Hornby, Torchia, Howland, Blood, Whelan, Whitford*

*Elected October 19, 1939*

STANLEY E. BALLINGER  
CHESTER H. BLOOD  
VIRGINIA F. HORNBY

JOSEPH E. HOWLAND  
JORMA HYYPIA  
HUGH A. TORCIA

MARGARET N. WHELAN  
NATALIE B. WHITFORD

*Elected March 7, 1940*

JO ANDERSON  
J. PELEG BARLOW  
CHARLES A. BARNES  
JOSEPH BIANCHI

RICHARD H. BOHNING  
ALBERT P. CICCONE  
DONALD P. FAULK  
LYDIA C. HOWES

RUTH L. NICHOLS  
BENJAMIN R. ROBINSON, JR.  
ROBERT W. TRESCOTT

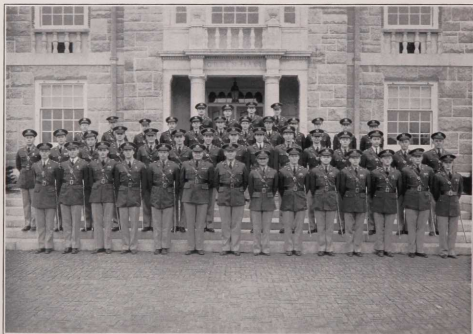


# RHODE ISLAND STATE COLLEGE

## SCABBARD AND BLADE

"H" Company, 6th Regiment of Scabbard and Blade, was established on the Rhode Island State College Campus in 1927. This company is unique in that all officers of the Junior class are made members. The pledges are first put through an informal initiation which includes Scabbard and Blade "Hell-Week," and, then, taken as members usually late in March.

Rodman Hall was transformed into a ballroom this year for the Military Ball. After the pledging ceremony, Miss Blanche Richard was named honorary Co-ed Colonel.



*First Row:* Johnson, Clark, White, Toechia, Smith, Major Beatty, Major Greer, Captain Leeper, Robinson, Woodbury, Eddy, Newall, Stone, Cook  
*Second Row:* Dean, Fogg, Irons, Rockwell, Scott, Lysak, Belisle, Repass, Quinlan, Hyland, Buonanno, Hook, Moore, Clark, Lovett  
*Third Row:* Gillespie, Shippee, Gelineau, Bailey, Peckham, Walcher, Tracy, Higginbottom, Palmer, Alick, Petersen, Mantenato  
*Fourth Row:* Christos, Billmyer, Moulthrop, Creech

<i>Captain</i> . . . . .	JAMES D. C. ROBINSON
<i>First Lieutenant</i> . . . . .	HARRISON M. GORTON, JR.
<i>Second Lieutenant</i> . . . . .	HERBERT F. WOODBURY
<i>Sergeant</i> . . . . .	HERBERT A. SMITH
<i>Faculty Members</i> . . . . .	MAJOR FRANK U. GREER
	MAJOR GEORGE B. BEATTY
	CAPTAIN CARROLL LEPPER



## PHI SIGMA SOCIETY

Phi Sigma Society is a national honorary biological society whose object is the promotion of interest in research in the biological sciences. The old Biological Society at Rhode Island was established as Alpha Xi Chapter in 1935. It is composed of outstanding Junior and Senior students in the Biology and Pre-Medical options and members of the faculty engaged in research in Bacteriology, Botany, or Zoology. Professor DeWolf and Dr. Hunter are faculty advisers of the society.

Meetings are held twice a month, sometimes with guest speakers and sometimes with reports on research conducted by student and faculty members. A biological paper, *The Cell*, is published yearly, while a permanent exhibit is maintained in Ranger Hall with a special one on Interscholastic Track Day. The local chapter maintains active relations with other chapters and similar biological societies in New England. By providing its members with a new outlook on biology and offering them an opportunity to pursue its study individually outside the limitations of the classroom, the Phi Sigma Society performs an important and valuable function for the student biologist.



First Row: Prof. DeWolf, Anderson, Stringer, Hornby, Weiss, Trescott, Dr. Hunter  
 Second Row: H. Edmonds, Smith, Howland, Caputi, Kaye  
 Third Row: Kelman, Bamfield, Scott, Pulser, S. Barber

President . . . . .	LOUIS D. STRINGER
Vice-President . . . . .	NATALIE B. WHITFORD
Secretary . . . . .	VIRGINIA F. HORNBY
Treasurer . . . . .	HENRY D. WEISS



# RHODE ISLAND STATE COLLEGE

## ALPHA ZETA

### FACULTY ADVISERS

DR. EVERETT P. CHRISTOPHER

DR. FRANK L. HOWARD

PROFESSOR THOMAS R. COX



### OFFICERS

<i>President</i> . . . . .	FRANK WILLIAMS
<i>Vice-President</i> . . . . .	RICHARD H. BOHNING
<i>Scribe</i> . . . . .	JOSEPH E. HOWLAND
<i>Treasurer</i> . . . . .	ARTHUR H. DEXTER
<i>Chronicler</i> . . . . .	JOHN B. ROWELL

Alpha Zeta fraternity represents a goal in the Aggie Curriculum, it is the inspiration for striving to "all tillers of the soil." The organization was founded at Ohio State University in 1897, from which time the total number of membership has risen to 48 chapters. Rhode Island State College, since its affiliation with the fraternity in 1936, has endeavored to promote scholarship and leadership among the Agricultural students of the school.



## THE SCROLL

The Scroll is the literary society of the campus, the purpose of which is to promote interest in all types of literature and to encourage original literary composition. Programs at weekly meetings include play-readings, speakers, criticisms of original manuscripts, and literary quizzes. During the past year, the organization sponsored the movement for the establishment of a college magazine which appeared for the first time this spring.



*Front Row:* Prof. Knickerbocker, Ferrazzoli, Bailey, Belofsky, Wisbey, Hornby, Abrams, Joyce, Miss Reilly  
*Second Row:* Sicilian, Stern, Palley, Crandall, Livingstone, Conrad, Whitford, Boyle  
*Back Row:* Colome, Arnold, Joslin, Briggs, Cheetham

*President* . . . . . VIRGINIA F. HORNBY  
*Vice-President* . . . . . HERBERT A. WISEBY, JR.  
*Secretary-Treasurer* . . . . . BEATRICE M. BELOFSKY  
*Faculty Adviser* . . . . . DR. KENNETH L. KNICKERBOCKER



# RHODE ISLAND STATE COLLEGE

## R. I. CLUB

The R. I. Club was founded on this campus to promote friendship among lettermen and to promote the interests of Rhode Island State College. Membership is open only to men who have received varsity letters.

Every year, the society holds a banquet and a semi-formal dance. These functions bring the year's activities to a close.



*First Row:* Robinson, Senecal, Godowski, Belisle, Duranleau, Prof. Irwin, T. Clarke, Cuddy, Petro, Pace  
*Second Row:* Waterman, Orlando, Pobblee, Crawford, Tereshkow, Lavalee, Black, Matthews, Kelman, Haufe  
*Third Row:* Maher, Nichols, McNally, Gosling, Duff, Hall, Dixon, Mantenuto  
*Fourth Row:* Gates, Conley, DeCesare, Torchia, W. Barlow, Ide, Hollis, Perkins, Zammarchi

*President* . . . . . THEODORE S. CLARKE  
*Vice-President* . . . . . EDWARD PETRO  
*Secretary* . . . . . EDMUND V. GODOWSKI  
*Treasurer* . . . . . ROBERT J. BELISLE



## LETTERMEN

### FOOTBALL

LOUIS ABRUZZI, '41	MAURICE FLYNN, '41	JOHN MOOSHIAN, '42
ALBERT CARPENTER, '42	LAWRENCE GATES, '41	NICHOLAS ORLANDO, '41
RAYMOND CRAWFORD, '40, Mgr.	WARNER KEANEY, '41	CLIFFORD PACE, '40
PHILLIP DAVIS, '40	ROBERT LARRABEE, '41	EDWARD PETRO, '40
ANACLETHE DeCESARE, '41	EDMUND MAHER, '42	DALLAS ROBINSON, '40
JAMES DUFF, '42	ANGELO MANTENUTO, '41	HERBERT SMITH, '40
RENE DURANLEAU, '40	THOMAS MATTHEW, '42	FRANK ZAMMARCI, '41
	WILLIAM McNALLY, '42	

### BASKETBALL

LOUIS ABRUZZI, '41	EUGENE GREENE, '40	CLIFFORD PACE, '40
FREDRICK CONLEY, '41	WARNER KEANEY, '41	EDWARD PETRO, '40
EDMUND GODOWSKI, '40	STANLEY MODZELEWSKI, '42	WILLIAM RUTLEDGE, '42

### TRACK

DANIEL ALDRICH, '39	WALTER GLADDING, '39	EDWIN PERKINS, '40
WILLIAM BARLOW, '40	ALFRED HALL, '40	KENNETH PERKINS, '40
GEORGE BAINTON, '40	ROBERT HALL, '41	ALDEN ROBBLET, '40
ROBERT BLACK, '41	GEORGE HAMMERLUND, '39	RAYMOND SENEAL, '40
THEODORE CLARKE, '40	JOHN HAUFF, '40	DAVID SMITH, '42
STUART COOPER, '39	MELVIN KELMAN, '40	HENRY TERESHKOW, '40
GEORGE CUDDY, '40	LAWRENCE LARKIN, '39	CHARLES TINGLEY, '42
JOHN CREECH, '41	FRANK LORD, '39	HUGH TORCHIA, '40
ROBERT DIXON, '41	WILLIAM McNALLY, '41	HORACE WHALEY, '40
GEORGE GAMACHE, '41	JOHN MORAN, '42	NORMAN WILCOX, '42
	LESTER NICHOLS, '42	

### BASEBALL

LOUIS ABRUZZI, '41	IRVING FAY, '39	JOHN LaCASTRO, '39
WILLIAM BUTLER, '39	WILLIAM FITCH, '39	BARNEY WATERMAN, '40, Mgr.
FREDRICK CONLEY, '41	DONALD GRAHAM, '49	TARAS ZACHADNYK, '39
RENE DURANLEAU, '40	CHESTER JAWORSKI, '39	FRANK ZAMMARCI, '41
	WARNER KEANEY, '41	

### TENNIS

BURROWS ALLEN, '39	LLOYD GARLAND, '39	DAVID PARTINGTON, '39
LEVON CAPRIELIAN, '39	SANFORD HOLLS, '40, Mgr.	DAVID REED, '39
JAMES COOK, '39	GUSTAVUS IDE, '40	LINWOOD WALES, '39



# RHODE ISLAND STATE COLLEGE

## WOMEN'S ATHLETIC ASSOCIATION

All women students are members of the Women's Athletic Association, but only those participating in sports may be eligible for a sweater. The executive power of this group is vested in a council which consists of the officer of the organization, the sweater-wearers, and two representatives from each of the two lower classes. This council formulates the rules governing the award of trophies and sweaters.

Requirements for a sweater are: two years on a varsity team, one year on a varsity team and two on a squad, or four years on a squad.



*First Row:* Thackeray, Schwartz

*Second Row:* Webster, Szymkowicz, Sanborn, H. Joyce, Nichols, Chase, Williams, Meskolyk

### OFFICERS

<i>President</i> . . . . .	MARY K. SCHWARTZ
<i>Vice-President</i> . . . . .	MARGARET R. THACKERAY
<i>Secretary-Treasurer</i> . . . . .	HAZEL C. JOYCE





## LETTERWOMEN

### HOCKEY

ELAINE BRESSLER '42	ALICE JEWELL '41	HELEN SZYMKOWICZ '40
MARGARET BROWN '42	HAZEL JOYCE '41	MARGARET THACKERAY '41
ANN CHAHARYN '41	ANNA MOSKALYK '41	BARBARA WEBSTER '41
JANET CHASE '40, Mgt.	JANE SANBORN '41	MAJORIE WHITAKER '42
MARY D'ARCY '42	MARY SCHWARTZ '40	VIRGINIA WILLIAMS '41
	MIRIAM SHANLEY '42	

### BASKETBALL

JANE BARLOW '42	HAZEL JOYCE '41	JANE SANBORN '41
ELIZABETH BENHEIMER '42	ANNA MOSKALYK '41	MURIEL SELBY '42
ANN CHAHARYN '41	RUTH NICHOLS '40, Mgt.	HELEN SZYMKOWICZ '40
MARY CLARKIN '42		VIRGINIA WILLIAMS '41

### TENNIS

ANNA EMMA '39	ALICE JEWELL '41	MARY SCHWARTZ '40
ANN DENICO '42	NORMA POIRIER '42	FLORENCE THAVENET '39
FRANCES DRUMMOND '42	ELIZABETH RICHMOND '42	VIRGINIA WILLIAMS '41
	JANE SANBORN '41	



# RHODE ISLAND STATE COLLEGE

## TAU KAPPA ALPHA

Tau Kappa Alpha, a national forensic society of which Lowell Thomas is the honorary president, founded the local chapter in 1919. Membership is limited to varsity debaters who have proven themselves outstanding. The Wranglers and the Portia Club contribute their leaders to this organization. The intramural debates are conducted by Tau Kappa Alpha. This year the George E. Brooks Intramural Debate Trophy was won by Delta Zeta Sorority. The original sponsor of the Model Congress was the Tau Kappa Alpha Society.



*First Row:* Livingstone  
*Second Row:* Boyle, Shippee, Trescott, Hornby, Billmyer

### OFFICERS

<i>President</i> . . . . .	ESTHER L. LIVINGSTONE
<i>Vice-President</i> . . . . .	CARROLL D. BILLMYER, JR.
<i>Secretary-Treasurer</i> . . . . .	NATHAN M. SHIPPEE
<i>Adviser</i> . . . . .	DR. EVERETT P. CHRISTOPHER



## WRANGLERS

The Wranglers, the men's debating society, is the proving ground for the varsity debating team. The purpose of the society is to train its members as worthy exponents of the art of public speaking. This society is open to all men students. Voting membership is conferred only on those men passing the pledgeship requirements. At the present time there are approximately twenty-five voting members and ten probationary members. During the past year nearly forty different universities and colleges were listed among opponents.



*First Row:* Cornell, Wisbey, Shippee, Prof. Brooks, Billmyer, Trescott, Bardsley  
*Second Row:* Langlois, Sunn, Searle, Vaughn, Kozak, Randall, Masterson, Curry  
*Third Row:* Barker, Sternback, Hazard, Ward, Ferris, Latt, Anderson

### OFFICERS

<i>President</i> . . . . .	CARROLL D. BILLMYER, JR.
<i>First Vice-President</i> . . . . .	JOHN P. BARLOW
<i>Second Vice-President</i> . . . . .	ROBERT W. TRESCOTT
<i>Secretary-Treasurer</i> . . . . .	NATHAN M. SHIPPEE
<i>Manager</i> . . . . .	HERBERT A. WISBEY
<i>Faculty Adviser</i> . . . . .	PROF. GEORGE E. BROOKS



# RHODE ISLAND STATE COLLEGE

## PORTIA CLUB

The Portia Club is the varsity debating organization for women with a yearly schedule which includes intercollegiate debates with colleges throughout the east. This year, a Senior team traveled to Virginia to exchange encounters.

Together with the Wranglers, the Club sponsors an annual Model Congress for colleges and another for high schools of Rhode Island.



*First Row:* Professor George E. Brooks, Henry, Belofsky, Hornby, Livingston, Palow, Stern  
*Second Row:* Ferrazzoli, Hoenstein, Kayes, Arnold, Joyce, Czubak, McCrudden

### OFFICERS

<i>President</i>	. . . . .	VIRGINIA F. HORNBY
<i>Vice-President</i>	. . . . .	ESTHER L. LIVINGSTONE
<i>Secretary-Treasurer</i>	. . . . .	BEATRICE M. BELOFSKY
<i>Manager</i>	. . . . .	MARGARET M. BOYLE
<i>Faculty Adviser</i>	. . . . .	PROFESSOR GEORGE E. BROOKS



## ENGINEERING COUNCIL



*Seated:* Dean Wales, Smith

*Standing:* Cabral, Meoz, Johnson, Blood, Clarke, Crowther

The Engineering Council was formed last year to encourage a closer relationship between the engineering societies, and to discuss problems which confronted the student branches of the technical societies. During the past year the Council has made it possible for these organizations to have lectures by various men prominent in certain fields of engineering.

Last year the Council sponsored the first "Slide Rule Strut." It was such a success that another was run this year. Judging from the enthusiasm shown by those attending the dance, it will be an annual event.

The Council sponsors a smoker and a banquet each year at which many prominent speakers are presented. This year the Council published a magazine of a purely technical nature. It contains articles of interest to all engineers, and the ultimate goal is an annual magazine for all engineers.

*President* . . . . . WILLIAM C. SMITH

*Secretary-Treasurer* . . . . . C. BERNARD CLARKE



# RHODE ISLAND STATE COLLEGE

## Rhode Island State College Concert Choir



- First Row:* Leary, H. Beaven, Sicilian, Webster, M. Brown, Darelus, Prof. McCauley, Nichols, Barker, Martin, Moretti, Briggs, Blackler, B. Edmonds, Richard
- Second Row:* Bressler, Odland, Gogel, Joyce, Bailey, Christie, Yare, H. Edmonds, Kingsley, M. Crandall, Hobson, Leon, Baines, S. Smith, Greer, D'Aquanno, Ray, Weeks, Lowry
- Third Row:* Moriarty, Johnstone, Conrad, D. Smith, Edwards, Stearn, Palley, Davis, Winsberg, Watt, Lech, Lavalley, C. Brown, Pyne, Thorpes, Anthony
- Fourth Row:* Cordin, Forstrom, Gagnon, Joslin, Hey, Scott, Repass, Johnson, D'Avanzo, Bell, Irons, R. Anderson, Sisson, Tobin
- Fifth Row:* Benson, Parnigoni, Colliander, A. Anderson, Griffith, Gudczauskas, MacFawn, Bills, Howes, Wright, Ecklund, Stene, Sterling, Johnstone, McGann
- Sixth Row:* Taylor, McGregor, Kerr, Clarke, Bond, Beaven, Waite, Dyer, Trovato, McCaskey, McKenna, Sunn, Paige, Lees



## A CAPELLA CHOIR

This organization is composed of the members of the Men's and Women's Glee Clubs, the two units functioning either separately or together. Under the direction of Professor Lee C. McCauley, this group, composed of 120 members, completed one of the most successful years of its history.

Numerous concerts were given this year in Kingston, and their extensive schedule carried them to several of the surrounding localities, including Providence, Newport, Westerly, and West Warwick. And in addition to the regular schedule, the group participated in an exchange of joint concerts with Colby College.

One of the most important events in the history of Rhode Island State College musical organizations was witnessed on May 17th, when the New England Federation of Music Clubs Convention was held in Kingston. Over 1,000 students and other persons active in the music field took part, and the affair, climaxed by the presentation of Sullivan's "Golden Legend" by the Concert Choir and the Symphonic Orchestra, was acclaimed a great success.



# RHODE ISLAND STATE COLLEGE

## PHI DELTA

Phi Delta, the first dramatic organization founded on the Rhode Island State College campus, has outlasted all others which came to life at one time or other. The society is self-supporting and all productions are under the direct supervision of the officers. It not only serves as a school for dramatic talent, but, also, as a workshop for those interested in production work, decorations, designing, and music.

Each year the Phi Delta presents three one-act plays known as the Freshmen Plays. This year Phi Delta presented a three-act play to take the place of the "Rhody Revue." The production was very successful and rose to the high standards of the former Phi Delta productions.



*First Row:* Wurtz, Reed, Moore, Woodbury, Newman, Wisbey, Johnstone, Hobson, Hartigan  
*Second Row:* Ballirano, Edmonds, Joyce, Thorpe, Conrad, Martin  
*Third Row:* MacFawn, Weeks, Gallogly, Hilton, Cranston, Blackler, Livingstone, Kenney, Pine  
*Fourth Row:* Bailey, Barker, Repass, Houghton, Hazard, Masterson, Duranleau

### OFFICERS

<i>President</i>	BERNARD B. NEWMAN
<i>Vice-President</i>	BLANCHE M. RICHARD
<i>Secretary</i>	DOROTHY E. DAVIS
<i>Treasurer</i>	HERBERT F. WOODBURY
<i>Business Manager</i>	HERBERT A. WISEBY, JR.
<i>Technical Director</i>	SAMUEL A. MOORE





## Rhode Island State College Little Symphony Orchestra

With a decided increase in student interest and an increase in its membership, the orchestra, under the direction of Professor Lee C. McCauley, again concluded another successful season. A concert given in Edwards Hall was well received, and the several assembly appearances of both the whole orchestra and the string quartet met with the approval of the student body. The organization climaxed its season by taking part in the "Golden Legend" production in May.



*First Row:* Peckham, Kenyon, Gornstein, Prof. McCauley, Robinson, Fiske, Frederickson, White  
*Second Row:* Carpenter, Silverman, Martin, Ashworth, Kreischer, Bargamian, White  
*Third Row:* Bardsley, Bessette, Benson, Boluch, Goldstein, Scott, Bell, Novack

### OFFICERS

<i>Manager</i> . . . . .	SYDNEY GORNSTEIN
<i>Business Manager</i> . . . . .	ALFORD S. PECKHAM
<i>Publicity Manager</i> . . . . .	WALTER C. KENYON
<i>Librarian</i> . . . . .	WALTER C. NOVACK



# RHODE ISLAND STATE COLLEGE

## RHODE ISLAND STATE COLLEGE BAND

Functioning as both the school marching band and as the Rhode Island State College Symphonic Band, this organization, under the excellent direction of Mr. Paul E. Wiggin, again completed another successful year. Besides representing the school at football and basketball games, it increased its popularity with several successful appearances at assembly periods, rendering both "swing" and symphonic programs. Concerts at Groton, Connecticut, completed the schedule of this popular group.



*First Row:* Dickens, Nemtzw, Gillespie, Ostrach, Laboissoniere, Burnham, Fiske, Thomas, Lupo  
*Second Row:* Major Greer, Monti, DiNunzio, D. Cohen, Gornstein, Peckham, Bornstein, L. Cohen, Ey, Kreischer, Bardsley, Director Wiggin  
*Third Row:* Archambault, Ashworth, Kenyon, Chase, Hampton, Goldstein, Houghton, Berardi  
*Fourth Row:* Levine, Walder, Lipson, Besette  
*Rear:* Carmiencke

### OFFICERS

*Manager* . . . . . ALFRED S. PECKHAM  
*Librarian* . . . . . RICHARD A. HOUGHTON, JR.



## NEWMAN CLUB

Primarily organized as the Catholic Forum in the fall of 1936, this group has now become a member of the New England Federation of Catholic Clubs as a chapter in the Newman Club. Its purposes are to promote the spiritual, intellectual, and social interests of the Catholic students of the college.

A week-end Lenten Retreat held on campus featured one of this year's successful enterprises. Other activities are an annual May Communion Breakfast, lecture and discussion bi-monthly meetings, charity work, and a varied program of social events. Reverend James E. Greenan is chaplain and adviser of the organization and through his influence has seen it grow in membership and activity.



*First Row:* Hartigan, Calderone, Reed, Mantenuto, Richards, Kirwin, Newman, V. Bennett, K. Bennett, Joyce  
*Second Row:* Peninne, Sullivan, Masterson, Magee, Griffith, Gallogly, Wilson, Zweir, Johnson  
*Third Row:* Callahan, McNiff, McCabe, McConnell, Belisle, Godowski, Gosling, Follis

### OFFICERS

<i>President</i> . . . . .	JOSEPH F. KIRWIN
<i>Corresponding Secretary</i> . . . . .	ROMA B. RICHARD
<i>Recording Secretary</i> . . . . .	ANGELO J. MANTENUTO
<i>Treasurer</i> . . . . .	BERNARD B. NEWMAN
<i>Adviser</i> . . . . .	REV. JAMES E. GREENAN



# RHODE ISLAND STATE COLLEGE

## STUDENT FELLOWSHIP

A friendly organization, open to students of every creed, the Student Fellowship has as its aim the stimulation of the mental, spiritual, and ethical life of its members. Outstanding speakers lead discussions concerning the social and moral questions of the day. The executive power is vested in a representative body called the Student Fellowship Cabinet. Regular Sunday evening meetings, plus hearth-fire suppers, parties, tournaments, and hikes, comprise the annual program.



*First Row:* Wisbey, Darcilus, D. Smith, Rev. McCready, A. Anderson, S. Peters, Livingstone, Nichols, Brown  
*Second Row:* Colome, Morres, Muce, Easterbrooks, R. Briggs, Brown, H. Joyce, Thorpe, Bailey, Lebrun, Gilman  
*Third Row:* Monte, Wood, Joslin, Fine, Lemont, Walder, Afflick  
*Fourth Row:* S. Smith, Bond, Wicks, Harvey, W. Scott

### OFFICERS

<i>President</i>	ARNOLD S. ANDERSON
<i>Vice-President</i>	DAVID M. SMITH
<i>Secretary</i>	SHIRLEY L. PETERS
<i>Treasurer</i>	ALFORD S. PECKHAM
<i>Adviser</i>	REV. HARRY S. MCCREADY



## SOCIOLOGY CLUB

The Sociology Club, organized in 1936, attempts to promote interest in sociological thoughts through papers and outside lectures. The members make several trips to various state institutions and thus become familiar with different angles of social work.



*First Row:* V. Bennett, Russell, Trafton, Prof. Gordon, Edwards, Barrett

*Second Row:* Froberg, K. Bennett, Fiske, ....., Bliss, Asadorian, DeMagistris, Shippee

### OFFICERS

<i>President</i> . . . . .	WILLIAM M. TRAFTON
<i>Vice-President</i> . . . . .	SYLVIA RUSSELL
<i>Secretary-Treasurer</i> . . . . .	VIRGINIA BARRETT
<i>Project Committee</i> . . . . .	PAUL F. BLISS



# RHODE ISLAND STATE COLLEGE

## RADIO CLUB

The Radio Club is without doubt the fastest growing technical organization on the Campus. The Club was instrumental in organizing the recently established Rhode Island State College Network. The Network is of local importance at the present, but in the future it will be of greater value since games and other intercollegiate functions will be broadcast to us from other colleges. The Club also achieved considerable importance during the hurricane when its transmitting station handled radio traffic for South County.



*First Row:* Perkins, Stasukevich, Simons

*Second Row:* Ey, Seigelman, Morrisette, Prof. Hall, Hook, Painchaud, Page, Carroll

### OFFICERS

<i>President</i> . . . . .	JOHN E. STASUKEVICH, JR.
<i>Vice-President</i> . . . . .	SYLVAN SIMONS
<i>Secretary-Treasurer</i> . . . . .	EDWIN H. PERKINS
<i>Faculty Adviser</i> . . . . .	PROFESSOR WESLEY B. HALL



## CAMERA CLUB

The Camera Club was formed last year as a workshop for students interested in photography both as a hobby and as a profession.

Illustrated lectures on photography and its use in crime detection, the sciences, and so forth are sponsored by the club and are open to all students. Several lectures each year are confined to the problems confronting the beginner and a dark room in Green Hall has been set up for experimentation by both beginners and experienced photographers.

Members of the club were enthusiastic and the membership increased at each meeting. It is the hope of the club that in the near future it will be recognized as one of the prominent societies on campus.



First Row: Kilbane, B. Hankins  
 Second Row: Votta, R. Hankins, Buivid, Humes, Stuart  
 Third Row: Stasukevich, Ey, Sherman, Morrisette, Fuyat, Martin, Arnold, Mason, Leon, Davis

### OFFICERS

<i>President</i>	GEORGE M. BUIVID
<i>Vice-President</i>	MAHLON G. WRIGHT
<i>Secretary</i>	RALPH L. HANKINS
<i>Treasurer</i>	GEORGE R. HUMES, JR.



# RHODE ISLAND STATE COLLEGE

## AERO CLUB

Through the initiative of Dr. Alexander and Prof. Sikorsky, the Aero Club was organized in 1935. This organization created such wide interest that students from all departments in the college joined. Frequent field trips and lectures by such outstanding men as Prof. Sikorsky have greatly aided the students in gaining knowledge of the past, present, and future of aeronautics. Numerous prizes have been won by the group at model airplane contests. At the present the Club is completing the construction of a large glider.



*First Row:* Lemont, Garceau, Francis, Holdsworth  
*Second Row:* Dr. Alexander, Ey, Smith, Colliander, Prof. Sikorsky  
*Third Row:* Keifer, Buivid, Johnson, Parker, Spooner, Tatso, Scherer, Sadler, Pierce, Moskovich

### OFFICERS

<i>President</i> . . . . .	WILLIAM C. SMITH
<i>Vice-President</i> . . . . .	CLIFFORD S. EY
<i>Secretary</i> . . . . .	HAROLD E. LEMONT, JR.
<i>Treasurer</i> . . . . .	VIKING I. COLLIANDER





## AGGIE CLUB

The Aggie Club is one of the oldest and best known organizations in the school. The members are found in all options of the School of Agriculture. The Aggie Club has the distinction of presenting the first major social function of the college year, known as the Aggie Ball. In addition, the society fosters the promotion of professional interest at school and is well known for its friendly spirit and co-operation.



*First Row:* Simpson, Hines, Logee, Dexter, Corr, Monte, La Pidus  
*Second Row:* Howland, Wood, Gillespie, Peckham, Salzer, Reardon, Lebrun, Pickett  
*Third Row:* Lucier, Thompson, Goldstein, Barlow, Harvey, Johnson, Peck

### OFFICERS

<i>President</i> . . . . .	ARTHUR H. DEXTER
<i>Vice-President</i> . . . . .	ARTHUR L. DEAN, JR.
<i>Secretary</i> . . . . .	MARY ELLEN LOGEE
<i>Treasurer</i> . . . . .	WILLIAM J. CORR



# RHODE ISLAND STATE COLLEGE

## HOME ECONOMICS CLUB

Each year, since its first meeting in 1921, the Home Economics Club has increased in size and in activities. Membership is open to all enrolled in the Home Economics curriculum. The aims of the club are to provide added information and experience in the domestic sciences and through a varied and entertaining social schedule. Highlights of the year are a Christmas Food Sale, a Spring Fashion Show, a number of talks by outstanding speakers, and such diversions as handicrafts, movies and travel talks to enliven the bi-monthly meetings. Direct affiliation with the National Home Economics Association greatly aids the members to further their particular interests in the numerous phases offered.



*First Row:* Sumner, Joslyn, Sullivan, Barrett, Livingstone, Chaharyn, Richmond, Genua, Miss Thames  
*Second Row:* B. St. Germain, Francis, Huling, D. Davis, Wurtz, V. Bennett, Leary, Hobson, J. Davis, McBride, C. Phillips, Reid  
*Third Row:* Slattery, Griffith, Calderone, Mills, Shippee, Lindsay, Lech, Curtin, K. Bennett  
*Fourth Row:* Damon, Thompson, Moore, Goekkel, Chase, Brown, Palmer, M. Crandall, Johnstone, Thorp

### OFFICERS

<i>President</i> . . . . .	ESTHER L. LIVINGSTONE
<i>Vice-President</i> . . . . .	ANNE CHAHARYN
<i>Secretary-Treasurer</i> . . . . .	BETTY N. RICHMOND
<i>Social Chairman</i> . . . . .	VIRGINIA BARRETT



## CHEMISTRY SOCIETY

Although the Student Chapter of the American Chemical Society is comparatively new on the campus, it has well served its purpose in organizing the undergraduate chemists and in creating for them a greater interest in their work. Lectures, demonstrations, and discussions have aided the students considerably in gaining a knowledge of what is going on at the present in industry and in research work. The Society also sponsors a large display on Interscholastic Day.



*First Row:* Hyypia, Phillips, Dr. Kraus, Prof. Nelson, Yare, Dr. Carleton, Patykewich, Dr. Parks, Prof. Ince, Gates, Lewis  
*Second Row:* Waterman, Eisgrou, Mercure, Bond, Hayes, Crawford, Iacofano, Teja, Morris, Langlois

### OFFICERS

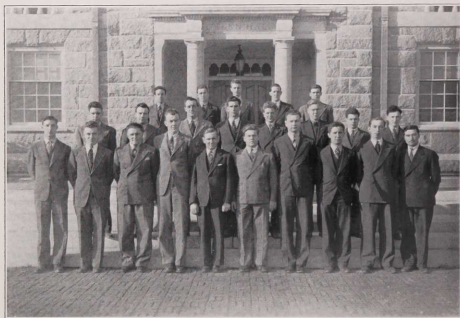
<i>President</i>	EDWARD P. PATYKEWICH
<i>Vice-President</i>	LEONARD A. LEWIS
<i>Secretary</i>	ROBERT S. YARE
<i>Treasurer</i>	JORMA HYYPIA



# RHODE ISLAND STATE COLLEGE

## Student Chapter of the American Institute of Chemical Engineers

The Student Chapter was organized by Dr. M. E. Molstead of Yale University on December 15, 1938. This is the fourth chapter to be organized in New England. The other chapters are at Yale, M. I. T., and Northeastern. The society contributed immensely to the success of the Engineers' Council, the Slide Rule Strut, and the Engineers' Smoker. The main purpose of the society is to conduct a survey of the chemical industries of the state.



*First Row:* Gouse, Southworth, Crowther, Blood, Dr. Crawford, Prof. Beatty, Doherty, Miga, Regan, Votta  
*Second Row:* J. Horowitz, Beauchamp, Mullaney, Malcolm, Frederickson, Nurmi, Hicks, Shusman  
*Third Row:* I. Horowitz, Sullivan, Carter, Ashton, Shortley

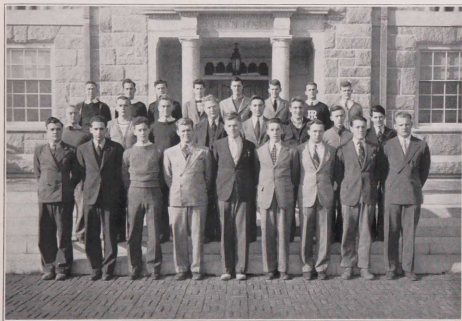
### OFFICERS

<i>President</i> . . . . .	CHESTER H. BLOOD
<i>Vice-President</i> . . . . .	LOUIS A. DOHERTY
<i>Secretary</i> . . . . .	PHILIP V. CROWTHER
<i>Treasurer</i> . . . . .	FRANK W. MIGA
<i>Faculty Adviser</i> . . . . .	DR. T. STEVENS CRAWFORD



## The American Society of Mechanical Engineers Student Branch at Rhode Island State College

The M. E.'s are one of the oldest and most firmly established organizations on the campus. It was organized in 1904 as The Mechanical Engineering Society in order to stimulate interest and further knowledge in this field. This society became affiliated a few years later with the A. S. M. E. From the latter, the local chapter has the opportunity of hearing and contacting professional engineers. The society's Employment Service and Engineering Council for Professional Betterment provide a great help to the members in future life as well as in the college.



*First Row:* Afflick, Rakatansky, Butler, Smith, Johnson, Pierce, Ey, Francis, Colliander  
*Second Row:* Secor, Stone, Kiefer, Prof. Carpenter, Walthor, Anderson, Burnham, Wilkie  
*Third Row:* Parker, Joss, Ide, Quinlan, Spooner, Holmes, Hammerlund, Bills

### OFFICERS

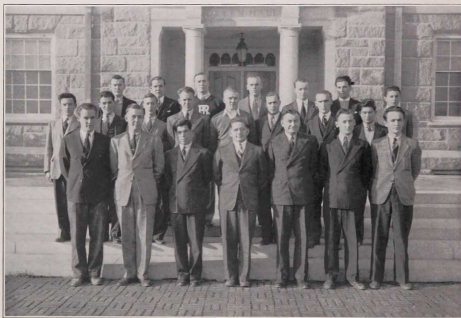
<i>President</i> . . . . .	EDWARD A. JOHNSON
<i>Vice-President</i> . . . . .	HOWARD W. BUTLER
<i>Secretary</i> . . . . .	WILLIAM C. SMITH
<i>Treasurer</i> . . . . .	RUSSELL J. PIERCE
<i>Faculty Adviser</i> . . . . .	PROFESSOR EDWARD L. CARPENTER



# RHODE ISLAND STATE COLLEGE

## Rhode Island State College Branch American Institute of Electrical Engineers

The Electrical Engineering Society was founded in 1898 and became affiliated with the national organization in 1923. The main function of this society is to stimulate interest in this type of work and to provide contacts for the members with prominent and experienced members of the national organization. The Society not only tends to promote friendship among the students, but also affords a medium through which knowledge of recent progress in electrical engineering is gained.



*First Row:* Perkins, Possner, Cabral, Warren, Prof. Hall, Mroz, Hall  
*Second Row:* Duffy, Simons, Schramm, Goff, Dienes, Hasso, Stasukevich, Jarcho  
*Third Row:* Stene, Hasney, Torchia, Gudaczskas, Buivid, Fratantuono, Gardono

### OFFICERS

*President* . . . . . FLETCHER H. WARREN, JR.  
*Vice-President* . . . . . CHARLES A. CABRAL  
*Secretary-Treasurer* . . . . . EDWIN A. MROZ



## Rhode Island State College Chapter of the American Society of Civil Engineers

The Student Chapter became affiliated with the A. S. C. E. in 1932. The growth and interest in this organization has been immense. By being in contact with professional men in this field, the members of this organization have been able to visualize their dreams of some day building large bridges and gigantic skyscrapers. Occasional conferences and field trips have aided the students to preview the practical side of their future profession.



*First Row:* Sweeney, Repass, Clarke, D. Coonan, Prof. Stubbs, J. Coonan, Sheridan, Romano  
*Second Row:* Webster, Cordin, Hammond, Moulthrop, Kozak, McGann, Daley, Corsi, Sweet  
*Third Row:* Dykstra, Rohland, Strong, Withey, Rockwell, MacKinnon, Cevoli, Sakakeeny

### OFFICERS

<i>President</i> . . . . .	DANIEL J. COONAN
<i>Secretary</i> . . . . .	CHARLES B. CLARKE
<i>Treasurer</i> . . . . .	JOHN J. COONAN
<i>Faculty Adviser</i> . . . . .	PROFESSOR FRANK W. STUBBS



# RHODE ISLAND STATE COLLEGE

## GRIST STAFF AT WORK



*Seated:* Greene, Haufe, Livingstone, Moretti, Kirwin  
*Standing:* Woodbury, Gorton, Pace

Each year towards the close of the school term, the GRIST Board, comprised of members of the Junior class, takes over its new duties. From that time in late spring until the following spring this Board gathers and assembles material that will go towards making up the yearbook. Within the pages of the yearbook are contained the activities during the past year, individual write-ups of the graduating class and faculty, and certain features that lend spice. As years roll by the many photographs in the GRIST are often used as album material, for they portray the typical life on the Kingston campus.

The editor is appointed by the junior class president who in turn selects the remainder of the staff. Suggestions for improving the book are welcomed and the staff members greatly enhance their value to the editor if they have new ideas. All GRIST work is in the hands of the students and the only faculty control comes from a financial adviser.