



Associations
and
Clubs



Battalions

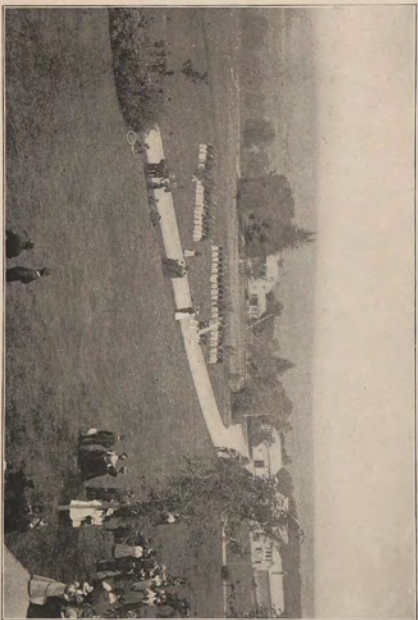
Military Organization, Rhode Island Cadets

Company A

B. E. KENVON,	Captain.
W. F. OWENS,	Second Lieutenant.
W. C. PHILLIPS,	1st Sergeant.
J. J. FRY,	2nd Sergeant.
A. E. MUNRO,	3d Sergeant.
M. R. CROSS,	4th Sergeant.
J. R. ELDRED,	5th Sergeant.
H. M. BRIGHTMAN,	1st Corporal.
H. D. SMITH,	2d Corporal.
A. L. KENVON,	3d Corporal.
A. A. SHERMAN,	4th Corporal.

Company B

M. A. LADD,	Captain.
A. W. BOSWORTH,	First Lieutenant.
H. KNOWLES,	1st Sergeant.
R. N. SOULE,	2d Sergeant.
C. KNOWLES,	3d Sergeant.
C. N. WHEELER,	4th Sergeant.
A. A. DENICO,	5th Sergeant.
C. S. BURGESS,	1st Corporal.
A. E. STEERE,	2d Corporal.
L. G. K. CLARNER,	3d Corporal.
L. E. WIGHTMAN,	4th Corporal.
2d LIEUT. W. F. OWENS,	Adjutant.
C. N. WHEELER,	Sergeant Major.
L. CLARK,	Bugler.



BATTALION DRILL.

Rhode Island College Glee and Banjo Club

Officers.

C. B. MORRISON, '99, PRESIDENT.

R. O. BROOKS, '99, BUSINESS MANAGER.

C. S. BURGESS, '01, TREASURER.

J. S. ALLEN, JR., DIRECTOR.

Glee Club:

First Tenors.

C. S. BURGESS, '01.
J. S. ALLEN, JR.,
R. N. MAXSON, '02.

Second Tenors.

R. O. BROOKS, '99.
C. B. MORRISON, '99

First Bass.

L. J. REUTER, 01.
J. A. CLARNER, '03.
W. M. HOXIE, 03.

Second Bass.

L. G. K. CLARNER, '01.
A. W. BOSWORTH, '99.

C. G. ANDREWS, '01.
J. E. DUFFY, '03.

Banjo Club:

Banjoarrivins.

A. C. SCOTT.

Banjos.

C. G. ANDREWS, '01.
J. A. CLARNER, '03.

Mandolin.

C. B. MORRISON, '99.

Violin.

L. G. K. CLARNER, '01.

Guitar.

J. S. ALLEN, JR.



GLEE AND BANJO CLUB.

The Library Club.

THIS club was organized at the beginning of the college year, to fill the place formerly occupied by the old Research Club. It enjoys a reputation for exclusiveness, since its membership is mainly recruited from the higher classes and the faculty. The method of work taken up by the members consists in a systematic review of the leading magazines and periodicals, together with a review of the most prominent books as they appear from the press. Different magazines are assigned to the several members who, at the semi-monthly meetings give a synopsis of their contents and a detailed review of the more salient articles. During the year the club has held meetings regularly, which have been conducted with much pleasure and profit to the members. Its career on the whole has been very successful and we join with the members in crying, "Long live the Library Club."

Y. M. C. A.

W. M. HOXIE,	PRESIDENT.
H. D. SMITH,	VICE-PRESIDENT
R. W. PITKIN,	{ COR. SECRETARY.
A. L. KENVON,	{ REC. SECRETARY.
	TREASURER.

Y. W. C. U.

M. W. HARVEY,	PRESIDENT.
B. E. BENTLEY,	VICE-PRESIDENT.
E. M. PARKHURST,	SECRETARY.
E. P. WELLS,	TREASURER.

Alumni Association

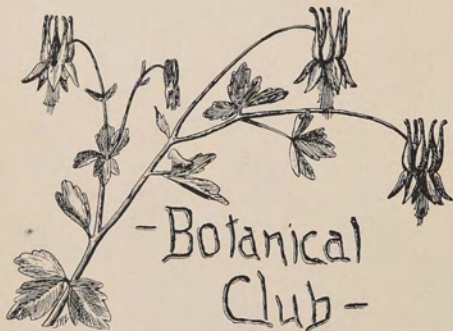
HOWLAND BURDICK, PRESIDENT.

GEORGE A. RODMAN, SECRETARY.

Woonsocket, R. I.

LOUIS H. MARSLAND, TREASURER,

Franklin, N. Y.



IN CHARGE OF THE PROFESSOR OF BOTANY.

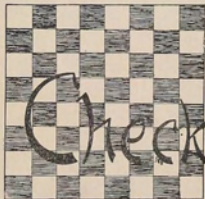
Those interested in botanical subjects meet occasionally to discuss the local flora and simple botanical literature.



The Zoölogical Club meets bi-weekly for the study of the local fauna, for the presentation of brief papers, and for the review of current journals. A special room is devoted to the collections and preparations made by the club. The daily observations by the members upon the occurrence, habitat, structure, life history and habits of the animals are on file for ready reference. Special excursions are made to favorable localities. Opportunities for field work in zoölogy are remarkably fine.

Officers

C. B. MORRISON,	President.
H. KNOWLES,	Secretary.
E. PAYNE,	Curator.



Checker Club.

Officers

L. E. WIGHTMAN, PRESIDENT.

J. J. FRY, VICE-PRESIDENT.

C. F. KENYON, SECRETARY AND TREASURER.

Winner of Tournament

C. F. KENYON.



January 20

Floor Committee,
1st. Sergeant H. Knowles
Corporal L. S. X. Clarner
Private L. J. Reuter
Private R. N. Maxson
Private R. W. Kent



Soocy Club

Officers

LYMAN CRANSTON,

Guard High Custodian of the Sacred Goo.

R. NELSON MAXSON,

Most Indefatigable Hitter of the Pipe.

ARTHUR L. REYNOLDS,

Assiduous Devotee of My Lady Nicotine.

R. N. SOULE,

Defender of the Royal Meerschaum.

HOWLAND BURDICK,

Humble Worshipper of the T. D.

Recollections of the Blizzard

THE heavy snow storm of Sunday and Monday, February twelve and thirteenth completely demoralized passenger traffic on the various railroads. Consequently a number of the students who went home on the Friday night before the storm found it impossible to return to the College before Wednesday morning. One young man we have in mind, on entering the reading room for the first time after his return, looked around him for a moment like some one just awaked from a long period of dormancy and asked in a stentorian voice: "Does any one know what day it is, or what time it is, or anything about the time whatever? I have lost track of everything relating to time during this storm."

Now every one knows that all conversation must cease upon entering the reading room, and a look of intense surprise immediately showed itself upon the faces of those who happened to be present at that time. The librarian looked at the offender with one inquiring glance, which gradually changed to a curious smile.

The young man did not ask any more questions regarding his locality or the time of day, so it was assumed by those present that he had found a suitable answer for one or both of his questions.

*List of Periodicals to be Found
in the Library*

- | | |
|--------------------------------|---|
| Harper's Monthly. | Power. |
| Atlantic. | Botanical Gazette. |
| Century. | Bulletin of the Torrey Bot. Club. |
| Scribner. | Journal of Society of Chemical
Industry. |
| Cosmopolitan. | Public Opinion. |
| N. E. Magazine. | Harper's Bazaar. |
| Popular Science Monthly. | Harper's Weekly. |
| Chautauquan Monthly. | London News Reprint. |
| American Naturalist. | Life. |
| Engineering Magazine. | Puck. |
| Manufacturer and Builder. | Judge. |
| North American Review. | American Machinist. |
| Forum. | Electric Age. |
| University Magazine. | Electrical World. |
| Quarterly Review. | Engineer. |
| Westminster Review. | Engineering. |
| Educational Review. | Scientific American and Supple-
ment. |
| School Review. | New York Critic. |
| Art Amateur. | Forest and Stream. |
| N. E. Journal of Education. | Breeder's Gazette. |
| Blacksmith and Wheelwright. | Quarterly Journal of Economics. |
| Carpentry and Building. | Political Science Quarterly. |
| Review of Reviews. | Journal of Chemical Society. |
| American Journal of Science. | University Extension. |
| Astromomy and Astrophysics. | |
| Journal of Franklin Institute. | |

National Geographic Magazine.	Boston Cooking School Magazine.
Popular Astronomy.	
American Mathematical Monthly.	Journal of the U. S. Artillery.
Science.	Journal of Military Service Institution.
MacMillan Magazine (Nature).	The Brochure Series
New York Daily Tribune.	Forest Leaves.
Boston Daily Herald.	Florist's Exchange.
Washington Daily Post.	American Gardening.
The American Kitchen Magazine.	National Nurseryman.
The Journal of School Geography.	Canadian Horticulturist.
	Gardening.

IN MEMORIAM

PETER BRADY

DIED AUGUST 6, 1898

IN MEMORIAM

ARNOLD THEODORE GRANT

CLASS OF 1900

DIED 1898

IN MEMORIAM

NELLIE HOLLIS PIERCE

CLASS OF 1899

DIED 1898

IN MEMORIAM

IN MEMORY OF
WILLIAM HENRY ALBRO

DIED MAY 6, 1899

WHEREAS, It has been the will of the Almighty in His infinite wisdom, to remove from our midst our beloved friend and classmate, William Henry Albro, and

WHEREAS, We recognize his scholarly attributes, his friendly, generous spirit, and his sterling character, therefore be it

Resolved. That we, the members of the Preparatory Class of the Rhode Island College of Agriculture and Mechanics Arts, keenly feeling the loss of so worthy a member, do extend our heartfelt sympathy to the bereaved family in their affliction, and be it further

Resolved: That a copy of these resolutions be sent to the family of our departed classmate, and that copies be placed on file in the Class Records and be published in the college and other publications.

E. M. CARGILL,
J. E. DUFFY,
E. J. CRANDALL,

For the Class.



DISTORTED FEATURES A SPECIALTY.

(Taken by Camera Club.)