

The Grist

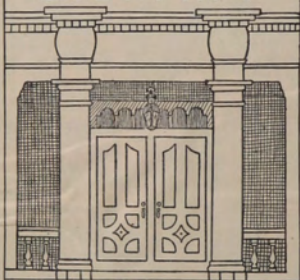


1916

R. I.
COLL

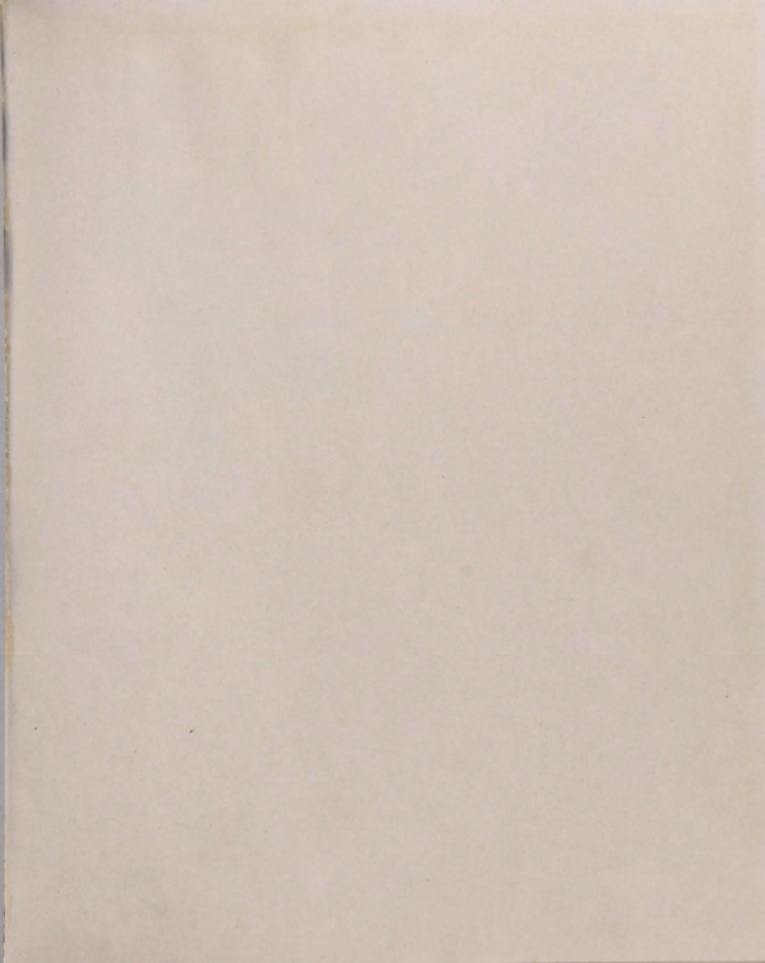
378.745
R342
1915

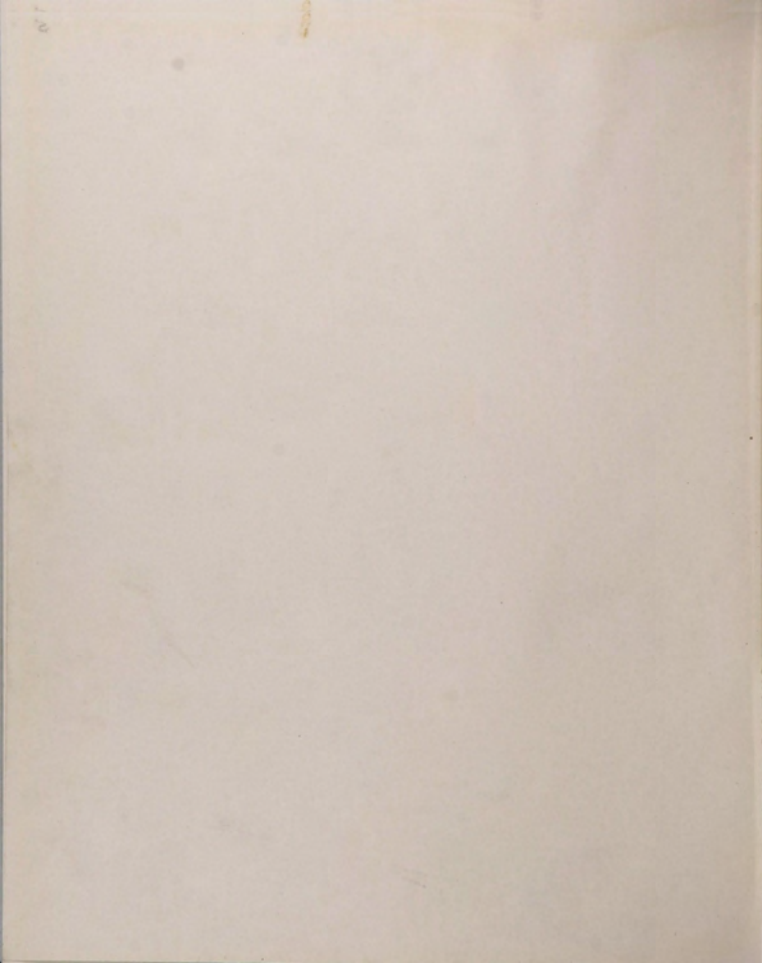
LIBRARY



RHODE ISLAND
STATE COLLEGE







378 745
R34 8
1915

R. I.
Coll.

THE GRIST

VOL. XIX



UNIVERSITY
OF RHODE ISLAND

Published by THE JUNIOR CLASS of
RHODE ISLAND STATE COLLEGE

KINGSTON, R. I.

MCMXV

To

Herman Churchill

In appreciation of his loyal and unselfish services to
us, and of his unfailing patience and good
nature, we dedicate this book



The 1916 Grist Board

Editor-in-Chief

RALPH EARL GLASHEEN

Associate Editors

GILBERT RALPH CORDIN

DEAN BLENUS FRASER

CHARLES EDWARD SEIFERT

CHARLES IRVING MILNES

BERTHA ADELAIDE RANDALL

Business Manager

ERNEST ELMER REDFERN

Advertising Manager

WESLEY CROWELL BRIGHAM

Assistant Managers

EARL WALMSLEY

JAMES MURRAY HENRY

Prologue

Following the custom of previous years, we, the Class of 1916, have undertaken the task of compiling a book, the chief purpose of which is to present, in an attractive form, a record of the college year. Perhaps none can realize better than those of us who have helped in this work, the numerous difficulties which must be overcome to at least maintain the standard established by preceding classes. If we have done only this, we shall feel that our time has been well spent. If the book does not meet with your approval we are sincerely sorry. In any case, we can truthfully state that no effort has been spared to make volume nineteen of the *Crist* one which shall do justice to the class and to Rhode Island State College.



Rhode Island State College

Corporation

Hon. Zenas W. Bliss	Providence County
Hon. Robert S. Burlingame	Newport County
Hon. Charles Estes	Bristol County
Hon. Thomas G. Mathewson	Kent County
Hon. B. Frank Robinson	Washington County
Hon. Walter E. Ranger	State Commissioner of Schools, ex-officio
Hon. Philip A. Money	Member of State Board of Agriculture

Officers of the Corporation

Hon. Walter E. Ranger, <i>President</i>	Providence
Hon. Zenas W. Bliss, <i>Vice-President</i>	Providence
Hon. Robert S. Burlingame, <i>Clerk and Treasurer</i>	Newport



FACULTY

- HOWARD EDWARDS, A. M., LL. D. *President*
Φ K Φ; Φ K Σ; A. M., Randolph-Macon College, 1876; Student, University of Leipzig, 1877-1878; Student in Paris, 1878; Teacher, Bethel Academy, Virginia, 1878-1880; Teacher, Bingham School, North Carolina, 1880-1882; Acting Principal of Bethel Academy, Virginia, 1882-1884; Principal, Tusculum Academy, Alabama, 1884-1885; Professor of English and Modern Languages, University of Arkansas, 1885-1890; Professor of English and Modern Languages, Michigan Agricultural College, 1890-1906; LL.D., University of Arkansas, 1891; Leave of absence in France and England, 1891-1892; Entered upon duties as President, July 1, 1906; LL. D., Brown University, 1914.
- BURT LAWS HARTWELL, Ph. D. *Professor of Agricultural Chemistry*
C S C; Σ Σ; Φ K Φ; B. S., Massachusetts Agricultural College and Boston University, 1889; M. S., Massachusetts Agricultural College, 1900; Ph. D., University of Pennsylvania, 1903; Appointed First Assistant Chemist, R. I. Experiment Station, 1891; Appointed Associate Chemist, 1903; Professor of Agricultural Chemistry, 1908; Appointed Director, December, 1912.
- HARRIET LATHROP MERROW, A. M. *Professor of Botany and Secretary of the Faculty*
B. S., Wellesley College, 1886; Teacher of Science, Plymouth High School, 1887-1888; Teacher of Science, Harcourt Place, Bambier, O., 1888-1891; Graduate Student, University of Michigan, 1891-1892; A. M., Wellesley College, 1893; Assistant, Botanical Laboratory, University of Michigan, 1893-1894; Appointed Professor of Botany, January, 1895.
- VIRGIL LOUIS LEIGHTON, Ph. D. *Professor of Chemistry*
Δ T Δ; Φ B K; Φ K Φ; A. B., Tufts College, 1894; A. M., Kansas State University, 1895; Ph. D., Tufts College, 1897; Instructor in Organic Chemistry, Tufts College, 1897-1901; Appointed Associate Professor of Chemistry, 1901; Professor, 1903.
- JOHN BARLOW, A. M. *Professor of Zoology*
Δ Y; Φ B K; Φ K Φ; B. S., Middlebury College, 1895; A. M., Brown University, 1896; Assistant Biologist, R. I. Experiment Station, 1898; Professor of Biology, Fairmount College, 1898-1901; Appointed Professor of Zoology, 1901.
- MARSHALL HENRY TYLER, B. S. *Professor of Mathematics*
Θ Δ X; B. S., Amherst College, 1897; Instructor at St. Mark's, 1897-1898; Appointed Master of the Preparatory School, 1898; Professor of Mathematics, 1906.
- GEORGE EDWARD ADAMS, B. S. *Professor of Agriculture*
B. S., R. I. College of Agriculture and Mechanic Arts, 1894; Student, Cornell University, 1897 and 1899-1901; Assistant in Horticulture, R. I. Experiment Station, 1895-1901; Assistant in Agriculture, 1901-1906; Associate in Agronomy, 1906; State Statistical Agent, U. S. Department of Agriculture, 1901; Appointed Professor of Agriculture, 1907.



- SAMUEL HARVEY WEBSTER, B. S. *Professor of Civil Engineering*
 Φ K Φ; Σ Ψ; A. B., Waynesburg College, Pa., 1893; Instructor, Jackson High School, Michigan, 1894-1896; Instructor, Washington State College, 1896-1903; Student, Leland Stanford University, 1903-1904; B. S., University of Illinois, 1906; Instructor of Civil Engineering, Oklahoma State College; Assistant Professor of Civil Engineering, Oklahoma State College, 1907; Appointed Professor of Civil Engineering, 1907.
- ROYAL LINFIELD WALES, B. S. *Professor of Mechanical Engineering*
 B. S., Massachusetts Institute of Technology, 1902; Instructor, Massachusetts Institute of Technology, 1902-1904; Instructor in Mechanical Engineering, State College of North Carolina, 1904-1905; Assistant Professor of Experimental Engineering, University of Tennessee, 1905-1908; Appointed Professor of Mechanical Engineering, 1908; Dean of Engineering Department, 1909.
- LEONARD PERLEY DICKINSON, B. S. *Professor of Physics and Electrical Engineering*
 A X P; B. S., Massachusetts Institute of Technology, 1896; With American Telephone and Telegraph Co., 1896; Instructor in Electrical Engineering, University of Maine, 1898; Instructor in Electrical Engineering, Massachusetts Institute of Technology, 1899; Assistant Professor of Electrical Engineering, Lafayette College, 1903; Appointed Professor of Physics and Electrical Engineering, 1909.
- LESTER WELLS BOARDMAN, A. M. *Professor of English Literature*
 Δ K E; A. B., Brown University, 1899; A. M., 1902; Graduate Student in English, University of Chicago, 1899-1900; Teacher of English, Cook Academy, Montour Falls, N. Y., 1900-1901; Teacher of English, The University School, Providence, R. I., 1901-1904; Graduate Student, Teacher's College, Columbia University, Summer Sessions of 1905-1906; Teacher of English, Baltimore City College, Baltimore, Md., 1904-1909; Head of Department of English, 1909-1912; Professor of Literature and Education and Head of the English Department at Rhode Island State College, 1912; Member of National Educational Association.
- HERMAN CHURCHILL, A. B., A. M. *Professor of Rhetoric and Composition*
 Β Θ Π; Φ Β Κ; Φ Κ Φ; A. B., Syracuse University, 1894; Summer Sessions, Chautauqua, N. Y.; Chicago University; A. M., University of Wisconsin, 1902; Instructor of English in Academic Schools, 1894-1903; English Department, Northwestern University, Evanston, Ill., 1903-1907; Head of English Department, Southwestern College, Winfield, Kan., 1907-1909; Head of English Department, Nebraska Wesleyan University, 1909-1912; Appointed Professor of Rhetoric and Composition, 1912.
- WILBUR EGBERT DOVE, U. S. A. *Professor of Military Science and Tactics*
 Captain, United States Army, Retired.
 Cadet at De Veaux College, Niagara Falls, N. Y., 1884-1888; Graduated with the rank of cadet captain; Enlisted in the United States Army, Jan. 28, 1889; Private, Corporal and Sergeant, Co. E. 12th Infantry, 1889-1892; Appointed Second Lieutenant, 1892; Promoted to First Lieutenant, 1898; Captain, 1901; Served with regiment, 12th Infantry, in the United States, Cuba and the Philippine Islands; Retired from active service, Dec. 17, 1901, as a result of "disability in line of duty due to a wound received in battle". On duty with the United States Infantry Association in Washington, D. C., 1904-1905; On recruiting duty at Albany, N. Y., 1905-1909; Professor of Military Science and Tactics at Fork Union Military Academy, Virginia, 1911-1912; Transferred to Rhode Island State College, Jan. 2, 1912.



- PHILIP BROWN HADLEY, Ph. B., Ph. D. *Professor of Bacteriology*
 Δ U; Σ Ψ; Φ K Φ; Ph. B., Brown University, 1903; Ph. D., Brown University, 1908;
 Biologist, Rhode Island State Fish Commission, 1904-1908; Assistant Bacteriologist,
 City of Providence, 1906-1908; Chief of Division of Biology, R. I. Experiment Sta-
 tion, 1908; Appointed Professor of Bacteriology, 1913.
- MABEL CAMPBELL, B. S., B. D. S. *Head of Home Economics Department*
 Σ K; B. S., Iowa State College, 1905; B. D. S., Iowa State College, 1908; Student
 at University of Minnesota, 1908; Instructor, Home Economics Department, Iowa
 State College, 1906-1910; Head of Home Economics Department, Illinois Wesleyan
 University, 1910-1913; Head of Home Economics Department, Rhode Island State
 College, 1913.
- ROY BRISTOL COOLEY, B. S. A. *Professor of Animal Husbandry*
 B. S. A., Ontario Agricultural College, Guelph, Canada, 1910; Assistant Agricultural
 Representative, Ontario Department of Agriculture, 1909; Registrar for Sheep and
 Swine, Dominion Livestock Records, Department of Agriculture, Ottawa, Canada,
 1910; Instructor of Animal Husbandry, McDonald Agricultural College, (McGill
 University) 1910-1912; Livestock Inspector, Canadian Pacific Railroad, 1912-1913;
 Professor of Animal Husbandry, Rhode Island State College, 1913.
- GEORGE ROBERT COBB, B. S. *Professor of Horticulture*
 C S C; B. S., Massachusetts Agricultural College and Boston University, 1908;
 At A. N. Pierson and Co.'s Greenhouses, Cromwell, Conn., 1908; Appointed In-
 structor of Horticulture, 1909; Assistant Professor of Horticulture, 1910; Professor
 of Horticulture, 1913.
- FRANCIS HERVEY SMITH, M. S. *Assistant Professor of Chemistry*
 X Φ; Ph. B., Brown University, 1905; M. S., Brown University, 1906; Assistant
 in Chemistry, Brown University, 1906; Instructor in Chemistry, Purdue University,
 1907-1908; Appointed Instructor in Chemistry, 1908.
- HOWLAND BURDICK, B. S. . . . *Assistant Professor of Dairying and Farm Machinery*
 B. S., Rhode Island College of Agriculture and Mechanic Arts, 1896; Appointed
 Assistant in Agriculture, and Farm Superintendent, 1896; Appointed Instructor in
 Agriculture, 1900; Appointed Instructor in Dairying, 1906.
- C. LESTER COGGINS, B. S. . . . *Assistant Professor of Physics and Electrical Engineering*
 B. S., Rhode Island State College, 1907; Graduate work, 1907-1909; Assistant in
 Physics, Ohio State University, 1909-1910; Assistant in Physics, Dartmouth College,
 1910-1912; Instructor in Physics, Stevens Institute of Technology, 1912-1914; Ap-
 pointed Assistant Professor of Physics and Electrical Engineering, 1914.
- ALTA MAY BAILEY, A. B. . . . *Dean of Women and Instructor of Physical Training*
 Φ B K; A. B., Boston University, 1903; Preceptress and Professor of English and
 Latin, Oak Grove Seminary, Vassalboro, Me., 1903-1905; Head of English Depart-
 ment, Laconia, N. H. High School, 1905-1908; Preceptress and Head of English De-
 partment, Kimball Union Academy, Meriden, N. H., 1908-1913; Dean of Women
 and Instructor of Physical Training, Rhode Island State College, 1913.
- THOMAS CARROLL RODMAN. *Instructor in Woodwork*
 Appointed, 1890.

- MABEL DEWITT ELDRED, B. S. *Instructor in Drawing*
 B. S., Rhode Island College of Agriculture and Mechanic Arts, 1895; Appointed
 Instructor in Drawing, 1897.
- DANIEL JOSEPH LAMBERT *Instructor in Poultry Keeping*
 Appointed, 1907.
- JOHN RALEIGH ELDRED, B. S. *Instructor in Mechanical Engineering*
 B. S., Rhode Island College of Agriculture and Mechanic Arts, 1900; Engaged in
 practical work, 1900-1905; Instructor in Mechanical Engineering, Cornell University,
 1905-1908; Appointed Instructor in Mechanical Engineering, 1908.
- FLORENCE H. MYRICK, B. S. *Instructor in Languages*
 B. S., Wellesley College, 1892; Appointed Instructor in Languages, 1909.
- FRANK HARTWELL BILLS, B. S. *Instructor in Mathematics*
 B. S., New Hampshire College, 1910; Appointed Instructor in Mathematics, 1910.
- FREDERICK JOSEPH GODIN, B. S. A. *Instructor in Horticulture*
 Θ X; B. S. A., Michigan Agricultural College, 1913; Appointed Instructor in Horti-
 culture, 1912.
- J. STANLEY BEAMENSDEFER, A. M., M. E. *Instructor in Mechanical Engineering*
 A X A; A. B., Franklin and Marshall College, Pa., 1907; M. E., Cornell University,
 1911; Instructor, Massachusetts Institute of Technology, 1911-1912; Theoretical
 and Applied Mechanics, Testing Materials Laboratory, Instructor, Rhode Island
 State College, 1912.
- CLYDE RAYMOND PERRY, B. S. *Instructor in Chemistry*
 B. S., Massachusetts Institute of Technology, 1911; Chemist, American Smelting and
 Refining Co., Monterey, Mexico, 1911-1914; Appointed Instructor in Chemistry,
 1914.
- WALTER SCOTT MERRILL, B. S. *Instructor in Civil Engineering*
 B. S., University of Maine, 1910; With Maine Central Railroad, 1910-1911; United
 States Reclamation Service, 1911-1913; With Valer-Montana Land and Water Co.,
 1913-1914; With Boston & Albany Railroad, 1914; Appointed Instructor in Civil
 Engineering, 1914.
- GEORGE EDWARD SPENCER, B. S. *Instructor in Botany*
 B. S., Syracuse University, 1914; Appointed Instructor in Botany, 1914.
- GLADYS ELSIE BURLINGAME, A. B. *Librarian*
 A. B., Smith College, 1911; Appointed Librarian, 1911.
- LUCY COMINS TUCKER *Secretary to the President*
- SARAH LOUISE NORTHRUP, B. S. *Bursar*
- JENNIE CRANDALL THOMPSON *Bookkeeper*
- GERTRUDE MABEL BURDICK *Bookkeeper*



Experiment Station Staff

HOWARD EDWARDS, A. M., LL. D.	{ President of the College Ex-officio Member
BURT L. HARTWELL, Ph.D., Director	Agronomy, Chemistry
PHILIP B. HADLEY, Ph. D.	Animal Breeding and Pathology
P. H. WESSELS, M. S.	Associate, Chemistry
F. R. PEMBER, M. S.	Assistant, Glasshouse Experiments
S. C. DAMON, B. S.	Assistant, Field Experiments
WALTER C. IRONS, B. S.	Assistant, Field Experiments
F. O. FITTS, B. S.	Assistant, Chemistry
G. E. MERKLE, B. S.	Assistant, Chemistry
L. S. CROSBY, A. B.	Assistant, Chemistry
L. P. HOWARD, B. S.	Assistant, Chemistry
DOROTHY W. CALDWELL, M. S.	Assistant, Animal Breeding and Pathology
MARGUERITE W. ELKINS, M. S.	Assistant, Animal Breeding and Pathology
NATHANIEL HELME	Meteorologist
E. ELIZABETH MEEARS	Stenographer and Librarian
M. ALICE KIMBALL	Stenographer and Accountant
H. ALIDA BIRCH	Stenographer



THE 1916 GRIST BOARD