

2015

## 17. Magnetic Induction

Gerhard Müller

University of Rhode Island, gmuller@uri.edu

Creative Commons License



This work is licensed under a [Creative Commons Attribution-Noncommercial-Share Alike 4.0 License](https://creativecommons.org/licenses/by-nc-sa/4.0/).

Follow this and additional works at: [http://digitalcommons.uri.edu/elementary\\_physics\\_2](http://digitalcommons.uri.edu/elementary_physics_2)

### Abstract

Part seventeen of course materials for Elementary Physics II (PHY 204), taught by Gerhard Müller at the University of Rhode Island. Documents will be updated periodically as more entries become presentable.

Some of the slides contain figures from the textbook, Paul A. Tipler and Gene Mosca. *Physics for Scientists and Engineers*, 5<sup>th</sup>/6<sup>th</sup> editions. The copyright to these figures is owned by W.H. Freeman. We acknowledge permission from W.H. Freeman to use them on this course web page. The textbook figures are not to be used or copied for any purpose outside this class without direct permission from W.H. Freeman.

---

### Recommended Citation

Müller, Gerhard, "17. Magnetic Induction" (2015). *PHY 204: Elementary Physics II*. Paper 14.  
[http://digitalcommons.uri.edu/elementary\\_physics\\_2/14](http://digitalcommons.uri.edu/elementary_physics_2/14)

This Course Material is brought to you for free and open access by the Physics Course Materials at DigitalCommons@URI. It has been accepted for inclusion in PHY 204: Elementary Physics II by an authorized administrator of DigitalCommons@URI. For more information, please contact [digitalcommons@etal.uri.edu](mailto:digitalcommons@etal.uri.edu).

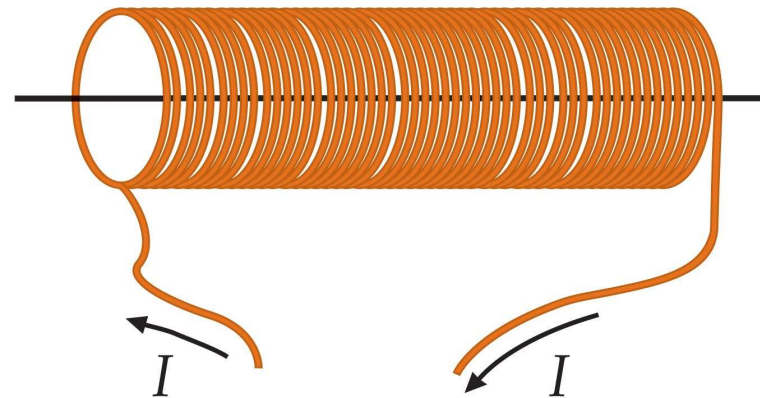


## Inductor (device):

- A wire that is wound into  $N$  turns of some shape and area.
- The current  $I$  flowing through the wire generates a magnetic field  $\vec{B}$  in its vicinity.
- The magnetic field  $\vec{B}$ , in turn, produces a magnetic flux  $\Phi_B$  through each turn.

## Inductance (device property):

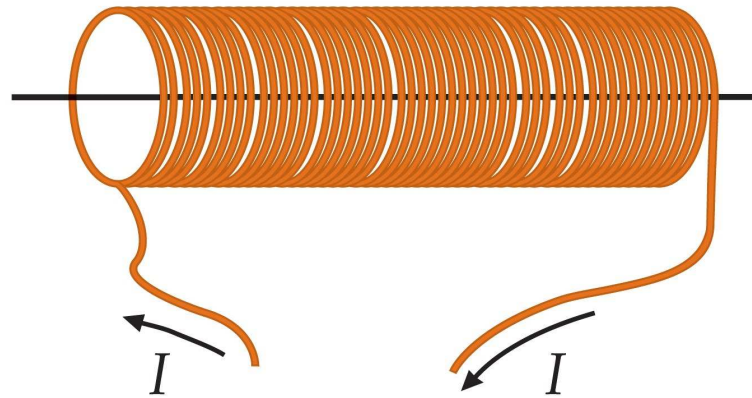
- Definition:  $L = \frac{N\Phi_B}{I}$
- SI unit:  $1\text{H} = 1\text{Wb/A}$  (one Henry)



# Inductance of a Solenoid



- $A$ : cross-sectional area
- $\ell$ : length
- $n$ : number of turns per unit length
- $N = n\ell$ : total number of turns
- $B = \mu_0 nI$ : magnetic field inside solenoid
- $\Phi_B = BA$ : magnetic flux through each turn
- $\Rightarrow$  Inductance of solenoid:  $L \equiv \frac{N\Phi_B}{I} = \mu_0 n^2 A\ell$



# Inductance of a Toroid



- Total number of turns:  $N$

- Magnetic field inside toroid:  $B = \frac{\mu_0 I}{2\pi r}$

- Magnetic flux through each turn (loop):

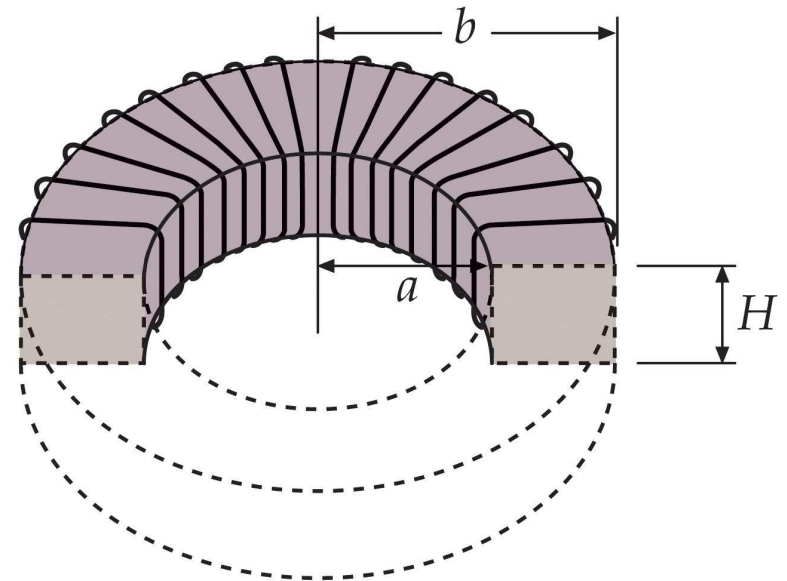
$$\Phi_B = \int_a^b BH dr = \frac{\mu_0 I N H}{2\pi} \int_a^b \frac{dr}{r} = \frac{\mu_0 I N H}{2\pi} \ln \frac{b}{a}$$

- Inductance:  $L \equiv \frac{N\Phi_B}{I} = \frac{\mu_0 N^2 H}{2\pi} \ln \frac{b}{a}$

- Narrow toroid:  $s \equiv b - a \ll a$

$$\ln \frac{b}{a} = \ln \left( 1 + \frac{s}{a} \right) \simeq \frac{s}{a}$$

- Inductance:  $L = \frac{\mu_0 N^2 (sH)}{2\pi a}$



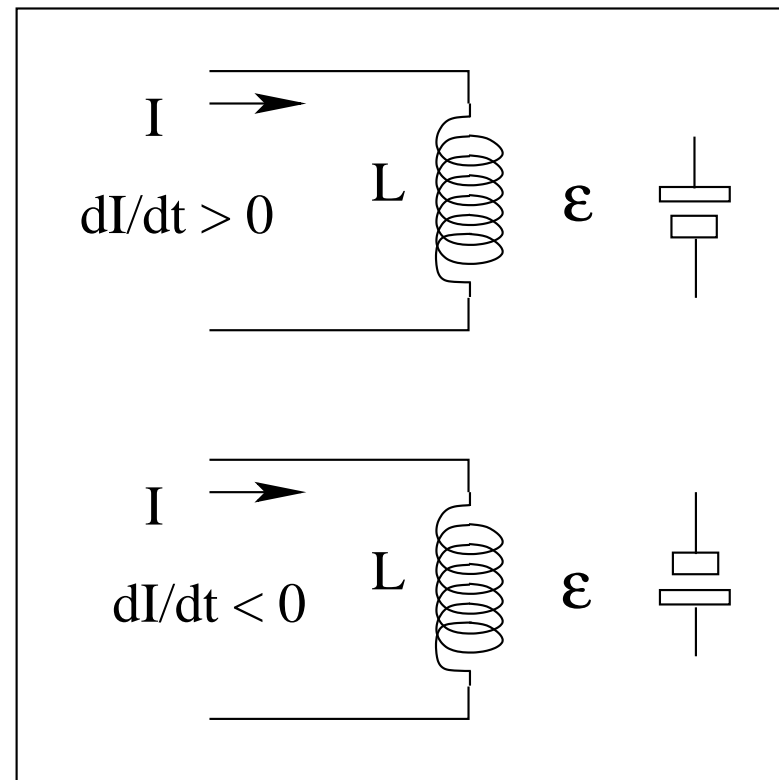
# Self-Induction



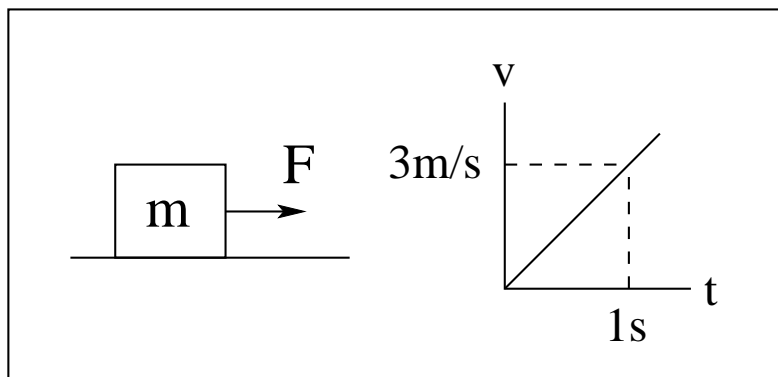
The induced electric EMF acts such as to oppose the change in the current that causes it (Lenz's law).

The presence of an inductance makes the electric current sluggish (resistant to change).

- Faraday's law:  $\mathcal{E} = -\frac{d}{dt}(N\Phi_B)$
- Inductance:  $L = \frac{N\Phi_B}{I}$
- Self-induced EMF:  $\mathcal{E} = -L\frac{dI}{dt}$



# Inertia: Mechanical vs Electrical

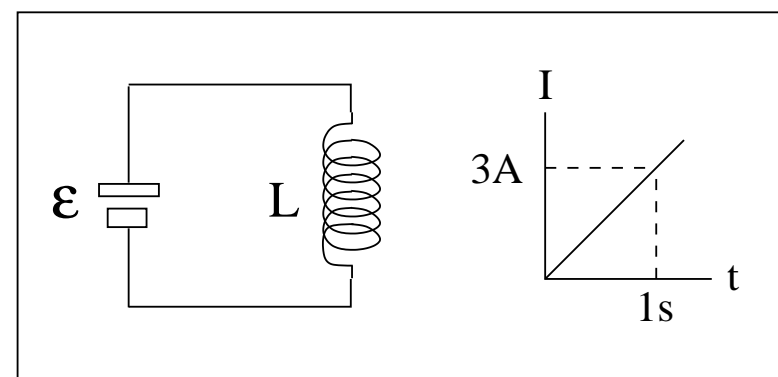


$$F = 6\text{N}, \quad m = 2\text{kg}$$

Newton's third law

$$F - m \frac{dv}{dt} = 0$$

$$\frac{dv}{dt} = \frac{F}{m} = 3\text{m/s}^2$$



$$\mathcal{E} = 6\text{V}, \quad L = 2\text{H}$$

Loop rule

$$\mathcal{E} - L \frac{dI}{dt} = 0$$

$$\frac{dI}{dt} = \frac{\mathcal{E}}{L} = 3\text{A/s}$$

# Mutual Induction



$\Phi_{12}$ : magnetic flux through each loop of coil 2 caused by current  $I_1$  through coil 1

$\Phi_{21}$ : magnetic flux through each loop of coil 1 caused by current  $I_2$  through coil 2

$$M_{12} = \frac{N_2 \Phi_{12}}{I_1} \quad (\text{mutual inductance})$$

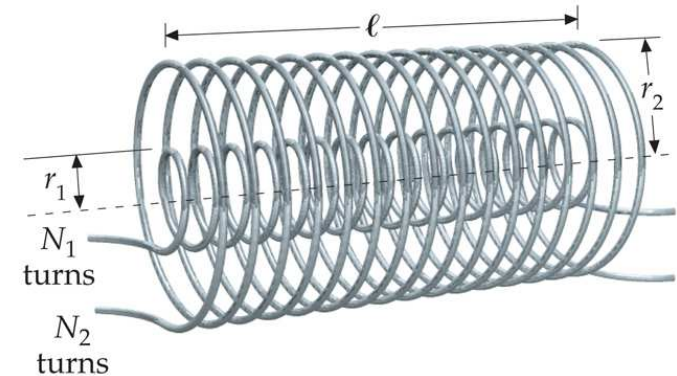
$$M_{21} = \frac{N_1 \Phi_{21}}{I_2} \quad (\text{mutual inductance})$$

$$\mathcal{E}_2 = -M_{12} \frac{dI_1}{dt} \quad (\text{emf induced in coil 2 due to current in coil 1})$$

$$\mathcal{E}_1 = -M_{21} \frac{dI_2}{dt} \quad (\text{emf induced in coil 1 due to current in coil 2})$$

$$M_{12} = M_{21} = M \quad (\text{symmetry property})$$

$$M = \mu_0 \frac{N_1}{\ell} \frac{N_2}{\ell} (\ell \pi r_1^2) \quad (\text{present configuration})$$



(a)

# Energy Stored in Inductor



Establishing a current in the inductor requires work.  
The work done is equal to the potential energy stored in the inductor.

- Current through inductor:  $I$  (increasing)
- Voltage induced across inductor:  $|\mathcal{E}| = L \frac{dI}{dt}$
- Power absorbed by inductor:  $P = |\mathcal{E}|I$
- Increment of potential energy:  $dU = Pdt = LI dI$
- Potential energy of inductor with current  $I$  established:

$$U = L \int_0^I I dI = \frac{1}{2} LI^2$$

Q: where is the potential energy stored?

A: in the magnetic field.

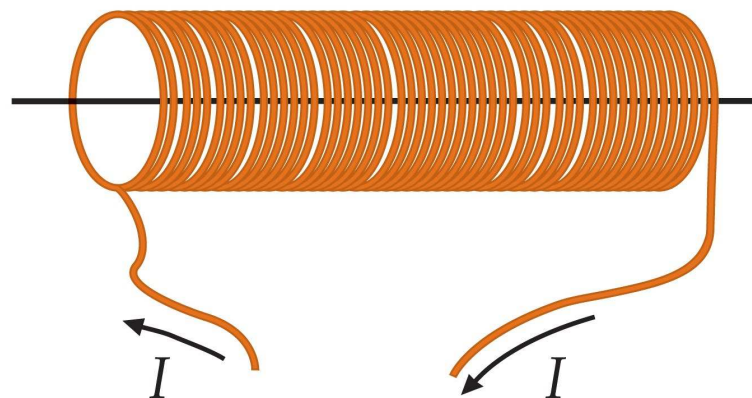


# Energy Density Within Solenoid



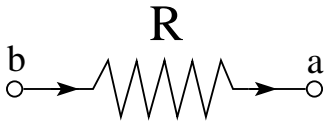
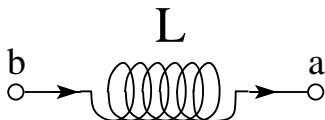

Energy is stored in the magnetic field inside the solenoid.

- Inductance:  $L = \mu_0 n^2 A \ell$
- Magnetic field:  $B = \mu_0 n I$
- Potential energy:  $U = \frac{1}{2} L I^2 = \frac{1}{2\mu_0} B^2 (A \ell)$
- Volume of solenoid interior:  $A \ell$
- Energy density of magnetic field:  $u_B = \frac{U}{A \ell} = \frac{1}{2\mu_0} B^2$



# Response of Device to Electric Current

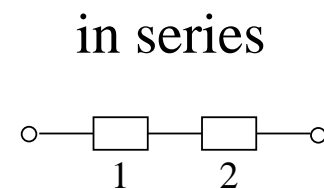
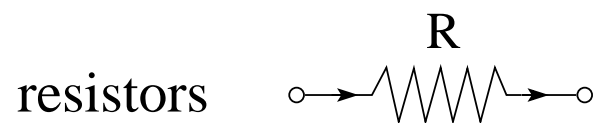


device	symbol	voltage
resistor		$V_{ab} = RI$
inductor		$V_{ab} = L \frac{dI}{dt}$
capacitor		$V_{ab} = \frac{1}{C} Q$ $\frac{dQ}{dt} = I$

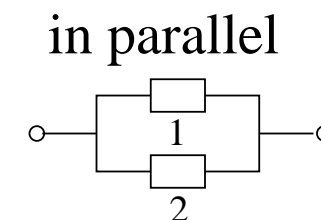
Note that the response of each device to a current  $I$  is a voltage  $V_{ab} \equiv V_b - V_a$ .

- resistor: response proportional to current itself
- inductor: response proportional to derivative of current
- capacitor: response proportional to integral of current

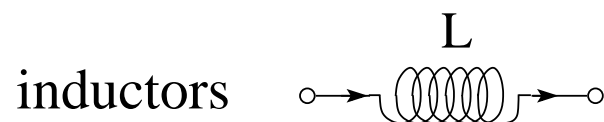
# Devices in Series or in Parallel



$$R_{eq} = R_1 + R_2$$

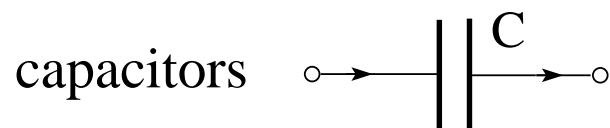


$$\frac{1}{R_{eq}} = \frac{1}{R_1} + \frac{1}{R_2}$$



$$L_{eq} = L_1 + L_2$$

$$\frac{1}{L_{eq}} = \frac{1}{L_1} + \frac{1}{L_2}$$



$$\frac{1}{C_{eq}} = \frac{1}{C_1} + \frac{1}{C_2}$$

$$C_{eq} = C_1 + C_2$$

## Magnetic Induction: Application (13)

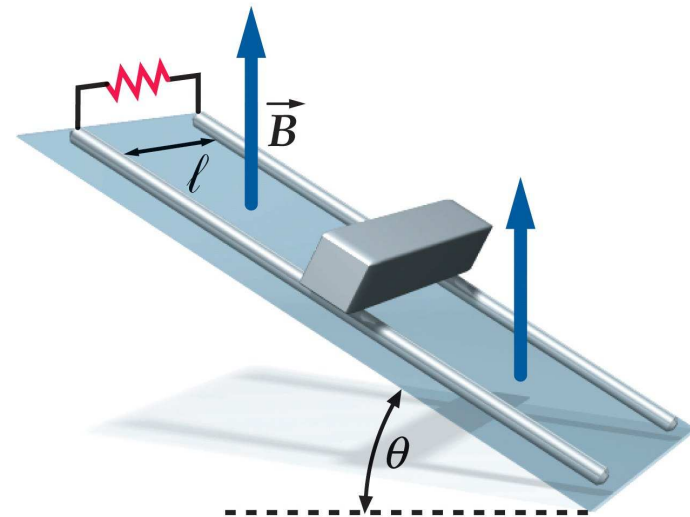


A rod of length  $\ell$ , mass  $m$ , and negligible resistance slides without friction down a pair of parallel conducting rails, which are connected at the top of the incline by a resistor with resistance  $R$ . A uniform vertical magnetic field  $\vec{B}$  exists throughout the region.

- (a) Identify the forces acting on the rod when it slides down with velocity  $v$ .
- (b) Determine the velocity for which all forces acting on the rod are in balance.

Determine the direction of the induced current from

- (c) the magnetic force acting on the charge carriers in the rod,
- (d) from the change in magnetic flux through the conducting loop,
- (e) from Lenz's law.

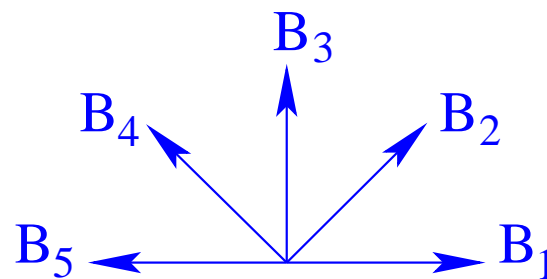
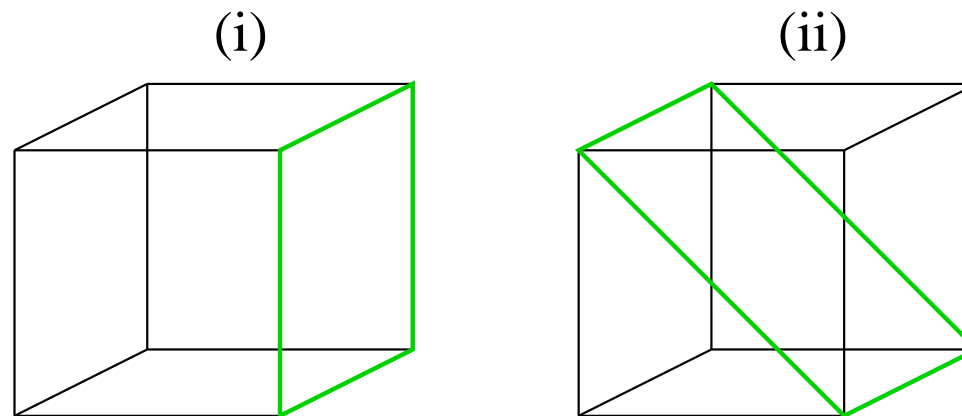


# Magnetic Induction: Application (12)



Consider two conducting loops (i) and (ii) (indicated by green lines in cubes of sides  $L = 2\text{m}$ ). Each loop is placed in a region of uniform magnetic field with linearly increasing magnitude,  $B(t) = bt, b = 2\text{T/s}$ , and one of the five directions indicated.

- (a) Find the magnetic flux through each loop as produced by each field.
- (b) Find the magnitude and direction of the emf induced by each field in each loop.



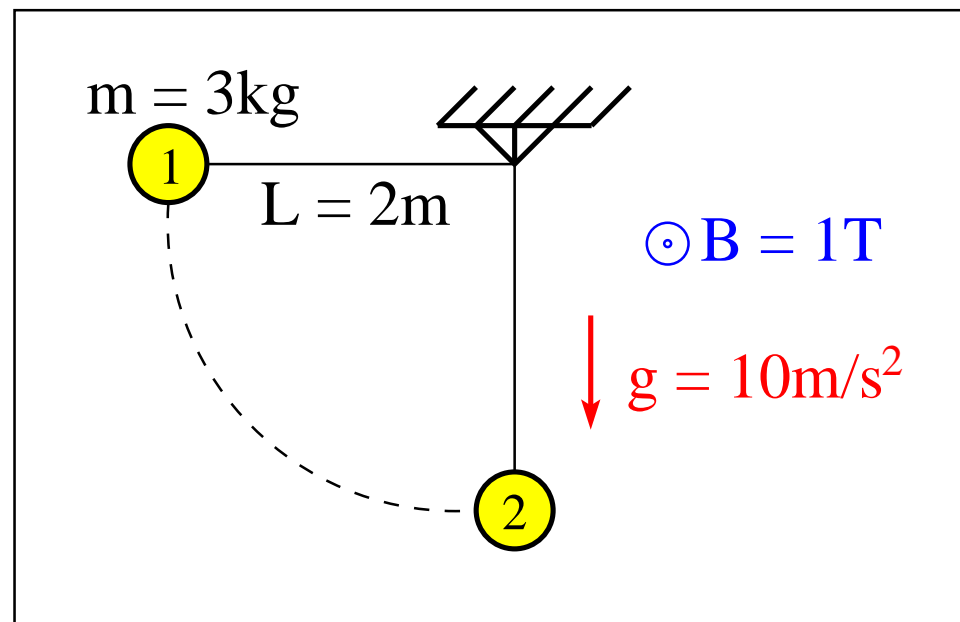
## Magnetic Induction: Application (2)



A conducting sphere attached to the pivot by a thin conducting wire is released from rest in position 1. There is a uniform magnetic field pointing out of the plane.

When the sphere has reached position 2...

- (a) which is at the higher gravitat. potential: pivot/sphere?
- (b) which is at the higher electrical potential: pivot/sphere?
- (c) what is the induced EMF between pivot and sphere?



# Magnetic Induction: Application (14)



Consider a conducting frame moving in the magnetic field of a straight current-carrying wire.

- magnetic field:  $B = \frac{\mu_0 I}{2\pi r}$
- magnetic flux:  $\Phi_B = \int \vec{B} \cdot \vec{A}, \quad dA = adr$

$$\Phi_B = \frac{\mu_0 I a}{2\pi} \int_x^{x+b} \frac{dr}{r} = \frac{\mu_0 I a}{2\pi} [\ln(x+b) - \ln x] = \frac{\mu_0 I a}{2\pi} \ln \frac{x+b}{x}$$

- induced EMF:  $\mathcal{E} = -\frac{d\Phi_B}{dt} = -\frac{d\Phi_B}{dx} \frac{dx}{dt} = -\frac{d\Phi_B}{dx} v$

$$\mathcal{E} = -\frac{\mu_0 I a v}{2\pi} \left[ \frac{1}{x+b} - \frac{1}{x} \right] = \frac{\mu_0 I a b v}{2\pi x(x+b)}$$

- induced current:  $I_{ind} = \frac{\mathcal{E}}{R}$  clockwise

